



**THE DATASHEET OF
THB001P**



Features/Benefits

- 2 axis, multi-direction operation
- 2,000,000 life cycle for toggle
- Center select momentary switch
- Small package size

Typical Applications

- Gaming peripherals
- Remote Control Vehicles
- Mini-joystick
- Thumb control
- Navigation control
- Industrial control
- Heavy equipment



Electrical

TOTAL RESISTANCE (POTENTIOMETERS): 10kΩ ± 20% initial
Within ± 20% of initial values for 10,000 cycles

RESISTANCE POTENTIOMETERS: Percentage of the voltage of terminal 1-2 to the voltage of terminal 1-3

RATED VOLTAGE: 50 VAC or 5 VDC

RATED POWER: 0.05 A @ 12 VDC

CONTACT NOISE: Noise < 10% of operating voltage

VOLTAGE DIVIDER: 39.6 ~ 60.4%

INSULATION RESISTANCE: > 100 MΩ

WITHSTANDING VOLTAGE: No arcing or breakdown

Environment

OPERATING TEMPERATURE: -10°C to +70°C

STORAGE TEMPERATURE: -30°C to +80°C

Mechanical

PATTERN OF ACTUATOR MOVEMENT: Toggle cross-wide and in a circle

FULL STROKE ACTUATION STOP STRENGTH: > 3.1 kgf
(3 seconds minimum)

PULL STRENGTH OF THE ACTUATOR: > 5.0 kgf
(3 seconds minimum)

ACTUATION FORCE: 120 +/-50 gf (12 +/- 5mN*M of Torque)

ACCURACY OF RETURN TO ACTUATOR RELEASE POSITION: ±3°

TOGGLE ANGLE OF OPERATION: 26° max. angle from vertical through full circular range of rotation

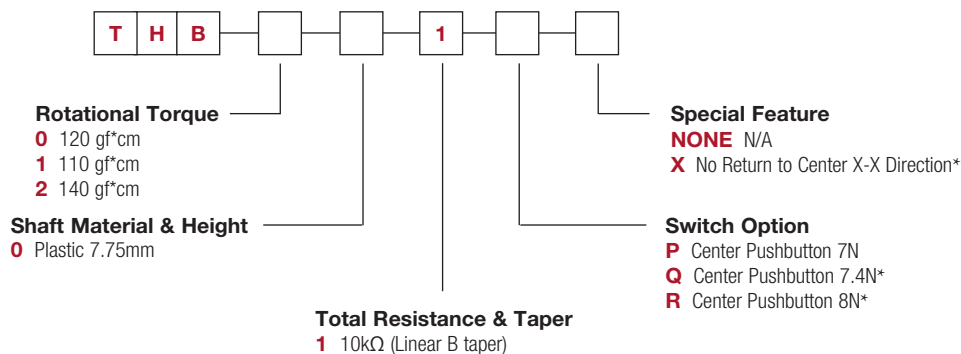
OPERATING LIFE: 1,000,000 cycles minimum (center switch)
2,000,000 cycles minimum (thumbstick toggle)

Packaging

Tray (60 units)

How To Order

Our easy build-a-switch concept allows you to mix and match options to create the switch you need. To order, select desired option from each category and place it in the appropriate box.



* Please note some option codes are mutually exclusive. Consult factory if you have any questions

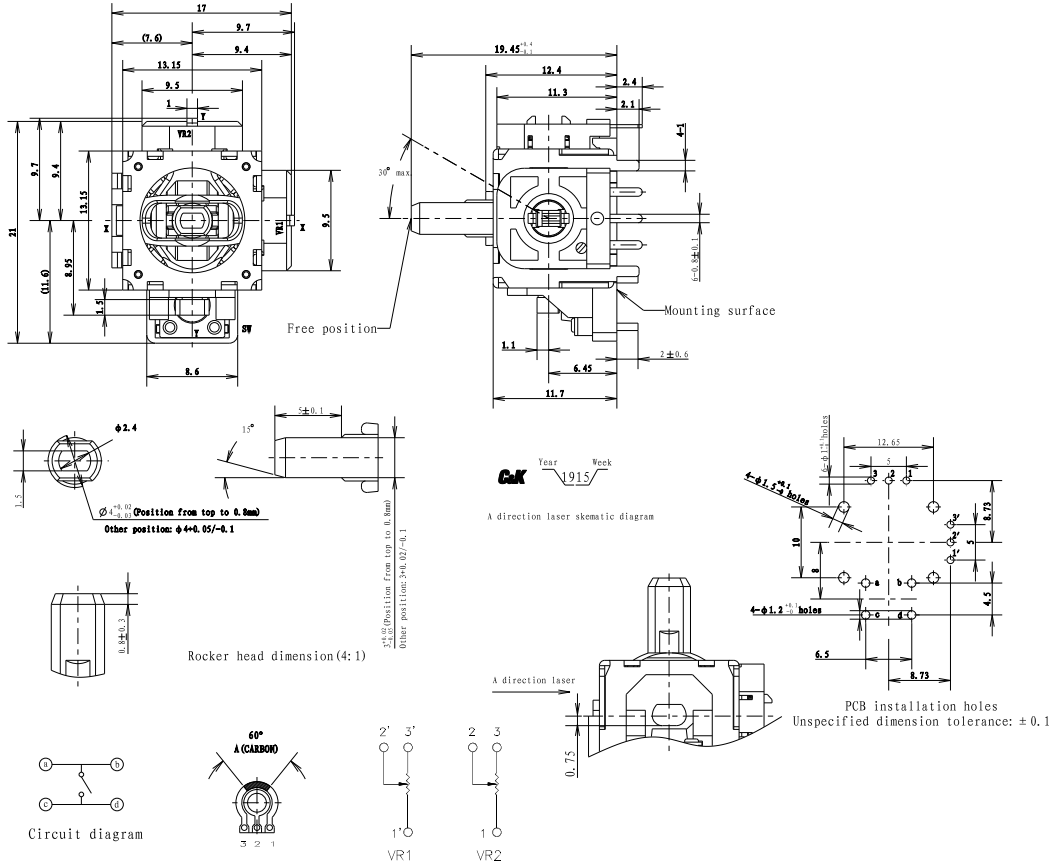


Dimensions are shown: mm

Specifications and dimensions subject to change

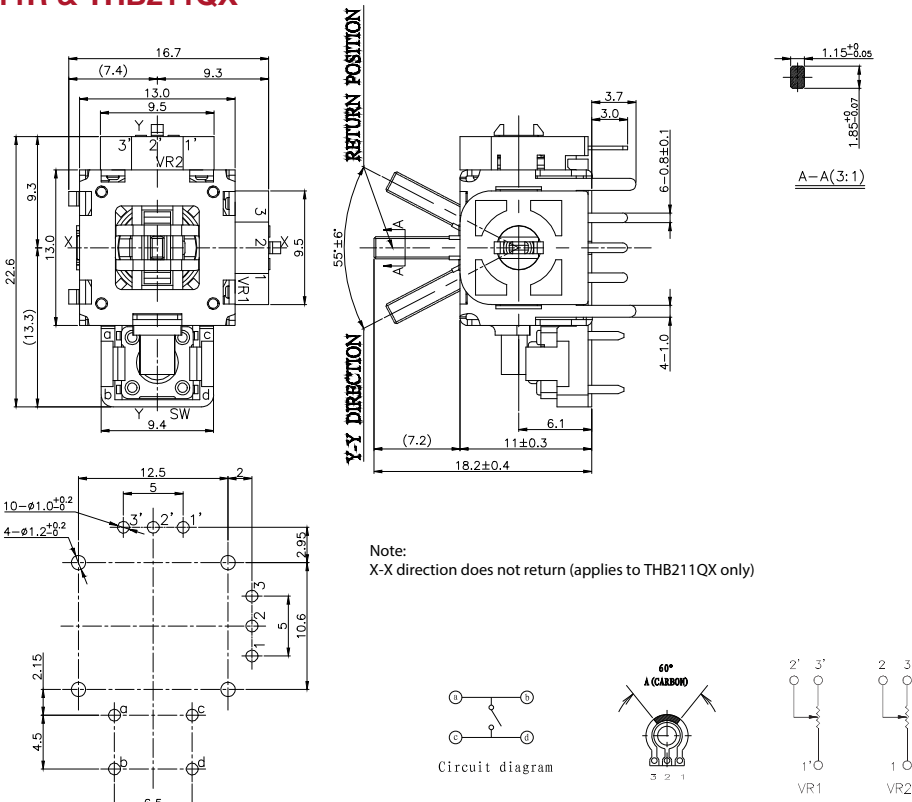
THB Series Miniature Thumbstick

THB001P



Navigation



THB111R & THB211QX



22 Feb 24

Looking for pricing, stock, or lifecycle information?

Click below to explore more details on WIN SOURCE:

-  [View THB001P](#) on WIN SOURCE
-  [C&K Components](#) Information

Optimize Your Supply Chain with WIN SOURCE Solutions

-  Global Sourcing Solution
-  Obsolete Management
-  Cost Control Management
-  Shortage Management
-  Alternative Solution
-  Excess Inventory Management