



# THE DATASHEET OF HFCG-1500+



# Ceramic High Pass Filter

## HFCG-1500+

50Ω      1600 to 6000 MHz

### The Big Deal

- Small size 2.0 mm x 1.25 mm
- Very good Power handling
- Ceramic construction



*Generic photo used for illustration purposes only*  
CASE STYLE: GE0805C-9

### Product Overview

HFCG-1500+ is a high pass filter with passband from 1600 MHz to 6000 MHz supporting a variety of applications. This model provides 2 dB typical insertion loss over a wide band due to strategically constructed layout. Housed in a tiny 0805 ceramic form factor with wraparound terminations, the filter is ideal for dense PCB layouts with minimal performance variation due to parasitics.

### Key Features

Feature	Advantages
Small size, 2.0 mm x 1.25 mm	Accommodates tight space requirements for dense PCB layouts.
Wrap around termination	Provides excellent solderability and easy visual inspection capability.
LTCC construction	Provides a rugged package that is well suited for tough environments including high humidity and high temperature extremes.
Wide pass band	This filter has a wide passband from 1.6 GHz to 6 GHz.

#### Notes

- A. Performance and quality attributes and conditions not expressly stated in this specification document are intended to be excluded and do not form a part of this specification document.  
B. Electrical specifications and performance data contained in this specification document are based on Mini-Circuit's applicable established test performance criteria and measurement instructions.  
C. The parts covered by this specification document are subject to Mini-Circuits standard limited warranty and terms and conditions (collectively, "Standard Terms"); Purchasers of this part are entitled to the rights and benefits contained therein. For a full statement of the Standard Terms and the exclusive rights and remedies thereunder, please visit Mini-Circuits' website at [www.minicircuits.com/MCLStore/terms.jsp](http://www.minicircuits.com/MCLStore/terms.jsp)



# Ceramic High Pass Filter

50Ω 1600 to 6000 MHz

## HFCG-1500+



Generic photo used for illustration purposes only  
CASE STYLE: GE0805C-9

**+RoHS Compliant**

The +Suffix identifies RoHS Compliance. See our web site for RoHS Compliance methodologies and qualifications

### Features

- Small size
- Temperature stable
- LTCC construction
- Very good power handling, 2.5W

### Applications

- Transmitters / Receivers
- Test and measurements
- Military applications
- Telecommunications and broadband wireless systems

### Electrical Specifications<sup>(1,2)</sup> at 25°C

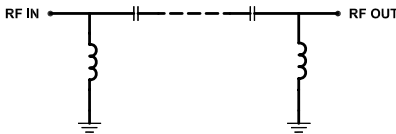
Parameter		F#	Frequency (MHz)	Min.	Typ.	Max.	Unit
Stop Band	Rejection Loss	DC-F1	DC - 800	30	40	-	dB
		F1-F2	800 - 1000	28	35	-	dB
	Freq. Cut-Off	F3 *	1400	-	3.0	-	dB
Pass Band	Insertion Loss	F4-F5	1600 - 1900	-	2.0	-	dB
		F5-F6	1900 - 5000	-	1.0	1.7	dB
	Return Loss	F6-F7	5000 - 6000	-	2.0	-	dB
		F4-F7	1600 - 6000	-	10	-	dB

1 This component is not intended to act as a DC block. Please consult with Mini-Circuits for further details

2 Measured on Mini-Circuits Characterization Test Board TB-1104+

\* Typically, a ±5% frequency deviation from the stated value may occur on a unit-to-unit basis.

### Functional Schematic



### Maximum Ratings

Operating Temperature	-55°C to 125°C
Storage Temperature	-55°C to 125°C
RF Power Input*	2.5W at 25°C

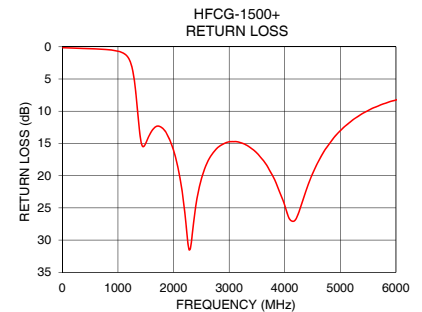
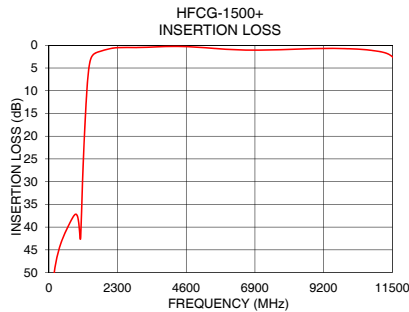
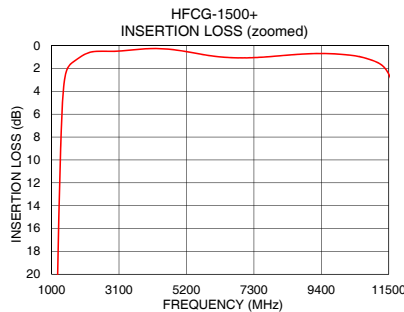
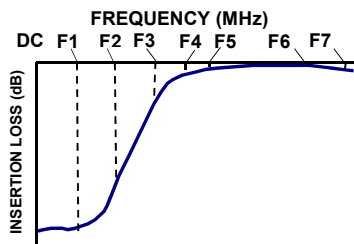
\*Passband rating, derate linearly to 0.5W at 125°C ambient

Permanent damage may occur if any of these limits are exceeded.

### Typical Performance Data at 25°C

Frequency (MHz)	Insertion Loss (dB)	Return Loss (dB)
10	71.90	0.15
100	54.69	0.17
800	37.88	0.43
1000	39.09	0.68
1120	31.27	1.11
1180	21.33	1.63
1200	18.52	1.91
1300	7.51	5.58
1400	3.05	13.94
1500	1.97	14.97
1600	1.59	13.17
1900	0.98	13.85
2000	0.81	16.07
2500	0.49	20.52
3000	0.49	14.74
4000	0.27	24.61
5000	0.43	13.02
5500	0.67	9.89
5700	0.78	9.12
6000	0.90	8.26

### Typical Frequency Response



#### Notes

- Performance and quality attributes and conditions not expressly stated in this specification document are intended to be excluded and do not form a part of this specification document.
- Electrical specifications and performance data contained in this specification document are based on Mini-Circuit's applicable established test performance criteria and measurement instructions.
- The parts covered by this specification document are subject to Mini-Circuits standard limited warranty and terms and conditions (collectively, "Standard Terms"); Purchasers of this part are entitled to the rights and benefits contained therein. For a full statement of the Standard Terms and the exclusive rights and remedies thereunder, please visit Mini-Circuits' website at [www.minicircuits.com/MCLStore/terms.jsp](http://www.minicircuits.com/MCLStore/terms.jsp)



[www.minicircuits.com](http://www.minicircuits.com) P.O. Box 350166, Brooklyn, NY 11235-0003 (718) 934-4500 sales@minicircuits.com

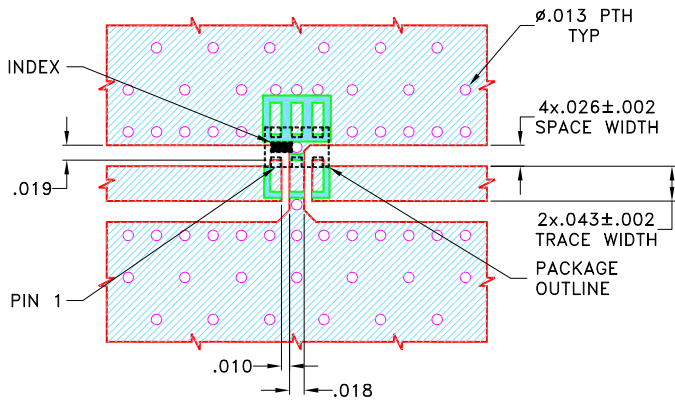
REV. B  
ECO-012606  
HFCG-1500+  
EDU3653  
URJ  
220331  
Page 2 of 3

## Pad Connections

INPUT	1
OUTPUT	3
GROUND	2, 4, 5, 6

Product Marking: LZ

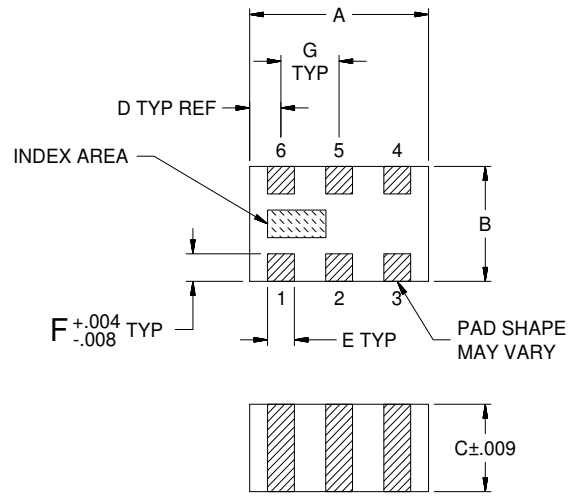
Demo Board MCL P/N: TB-1104+  
Suggested PCB Layout (PL-633)



### NOTES:

- COPLANAR WAVEGUIDE PARAMETERS ARE SHOWN FOR ROGERS (R04350B) WITH DIELECTRIC THICKNESS .020±.0015. COPPER: 1/2 Oz. EACH SIDE. FOR OTHER MATERIALS TRACE WIDTH AND GAP MAY NEED TO BE MODIFIED.
  - BOTTOM SIDE OF THE PCB IS CONTINUOUS GROUND PLANE.
- DENOTES PCB COPPER PATTERN WITH SMOBC (SOLDER MASK OVER BARE COPPER)  
 DENOTES PCB COPPER PATTERN FREE OF SOLDERMASK

## Outline Drawing



### Outline Dimensions (inch / mm)

A	B	C	D	E	F	G	Wt.
.079	.049	.037	.014	.012	.012	.026	grams
2.00	1.25	0.95	0.35	0.30	0.30	0.65	.008

Note: Please refer to case style drawing for details

### Notes

- A. Performance and quality attributes and conditions not expressly stated in this specification document are intended to be excluded and do not form a part of this specification document.  
 B. Electrical specifications and performance data contained in this specification document are based on Mini-Circuit's applicable established test performance criteria and measurement instructions.  
 C. The parts covered by this specification document are subject to Mini-Circuits standard limited warranty and terms and conditions (collectively, "Standard Terms"); Purchasers of this part are entitled to the rights and benefits contained therein. For a full statement of the Standard Terms and the exclusive rights and remedies thereunder, please visit Mini-Circuits' website at [www.minicircuits.com/MCLStore/terms.jsp](http://www.minicircuits.com/MCLStore/terms.jsp)

## Looking for pricing, stock, or lifecycle information?

Click below to explore more details on WIN SOURCE:

 [View HFCG-1500+](#) on WIN SOURCE

 [Mini-Circuits](#) Information

## Optimize Your Supply Chain with WIN SOURCE Solutions

-  Global Sourcing Solution
-  Obsolete Management
-  Cost Control Management
-  Shortage Management
-  Alternative Solution
-  Excess Inventory Management