



**THE DATASHEET OF**  
**SIT1602BI-72-33E-66.666660**



### Features

- 52 standard frequencies between 3.57 MHz and 77.76 MHz
- 100% pin-to-pin drop-in replacement to quartz-based XO
- Excellent total frequency stability as low as  $\pm 20$  ppm
- Operating temperature from  $-40^{\circ}\text{C}$  to  $85^{\circ}\text{C}$ . For  $125^{\circ}\text{C}$  and/or  $-55^{\circ}\text{C}$  options, refer to [SiT1618](#), [SiT8918](#), [SiT8920](#)
- Low power consumption of 3.5 mA typical at 1.8 V
- Qualify just one device with 1.62 V to 3.63 V continuous supply voltage
- Standby mode for longer battery life
- Fast startup time of 5 ms
- LVCMOS/HCMOS compatible output
- Industry-standard packages: 2.0 x 1.6, 2.5 x 2.0, 3.2 x 2.5, 5.0 x 3.2, 7.0 x 5.0 mm x mm
- Instant samples with [Time Machine II](#) and [Field Programmable Oscillators](#)
- RoHS and REACH compliant, Pb-free, Halogen-free and Antimony-free
- For AEC-Q100 oscillators, refer to [SiT8924](#) and [SiT8925](#)

### Applications

- Ideal for DSC, DVC, DVR, IP CAM, Tablets, e-Books, SSD, GPON, EPON, etc
- Ideal for high-speed serial protocols such as: USB, SATA, SAS, Firewire, 100M/1G/10G Ethernet, etc.

Related products for [automotive applications](#).

For aerospace and defense applications SiTime recommends using only [Endura™ SiT8944](#).



### Electrical Characteristics

All Min and Max limits are specified over temperature and rated operating voltage with 15 pF output load unless otherwise stated. Typical values are at  $25^{\circ}\text{C}$  and nominal supply voltage.

**Table 1. Electrical Characteristics**

Parameters	Symbol	Min.	Typ.	Max.	Unit	Condition
<b>Frequency Range</b>						
Output Frequency Range	f	52 standard frequencies between 3.57 MHz and 77.76 MHz			MHz	Refer to <a href="#">Table 13</a> for the exact list of supported frequencies
<b>Frequency Stability and Aging</b>						
Frequency Stability	F_stab	-20	-	+20	ppm	Inclusive of initial tolerance at $25^{\circ}\text{C}$ , 1st year aging at $25^{\circ}\text{C}$ , and variations over operating temperature, rated power supply voltage and load.
		-25	-	+25	ppm	
		-50	-	+50	ppm	
<b>Operating Temperature Range</b>						
Operating Temperature Range	T_use	-20	-	+70	$^{\circ}\text{C}$	Extended Commercial
		-40	-	+85	$^{\circ}\text{C}$	Industrial
<b>Supply Voltage and Current Consumption</b>						
Supply Voltage Options	Vdd_1.8	1.62	1.8	1.98	V	Contact SiTime for 1.5 V support
	Vdd_2.5	2.25	2.5	2.75	V	
	Vdd_2.8	2.52	2.8	3.08	V	
	Vdd_3.0	2.7	3.0	3.3	V	
	Vdd_3.3	2.97	3.3	3.63	V	
	Vdd_XX	2.25	-	3.63	V	
	Vdd_YY	1.62	-	3.63	V	
Current Consumption	Idd	-	3.8	4.5	mA	No load condition, f = 20 MHz, Vdd_2.8, Vdd_3.0, Vdd_3.3, Vdd_XX, Vdd_YY
		-	3.7	4.2	mA	No load condition, f = 20 MHz, Vdd_2.5
		-	3.5	4.1	mA	No load condition, f = 20 MHz, Vdd_1.8
OE Disable Current	I_OD	-	-	4.2	mA	Vdd_2.5, Vdd_2.8, Vdd_3.0, Vdd_3.3, Vdd_XX, Vdd_YY. OE = GND, Output in high-Z state
		-	-	4.0	mA	Vdd_1.8. OE = GND, Output in high-Z state
Standby Current	I_std	-	2.6	4.3	$\mu\text{A}$	ST = GND, Vdd_2.8, Vdd_3.0, Vdd_3.3, Vdd_XX, Vdd_YY. Output is weakly pulled down
		-	1.4	2.5	$\mu\text{A}$	ST = GND, Vdd_2.5, Output is weakly pulled down
		-	0.6	1.3	$\mu\text{A}$	ST = GND, Vdd_1.8, Output is weakly pulled down

Table 1. Electrical Characteristics (continued)

Parameters	Symbol	Min.	Typ.	Max.	Unit	Condition
<b>LVC MOS Output Characteristics</b>						
Duty Cycle	DC	45	–	55	%	All Vdds. See Duty Cycle definition in Figure 3 and Footnote 6
Rise/Fall Time	Tr, Tf	–	1	2	ns	20% - 80% Vdd_2.5, Vdd_2.8, Vdd_3.0, Vdd_3.3
		–	1.3	2.5	ns	20% - 80% Vdd_1.8
		–	–	2	ns	20% - 80% Vdd_XX
		–	–	2.7	ns	20% - 80% Vdd_YY
Output High Voltage	VOH	90%	–	–	Vdd	IOH = -4 mA (Vdd_3.0 and Vdd_3.3) IOH = -3 mA (Vdd_2.8 and Vdd_2.5) IOH = -2 mA (Vdd_1.8)
Output Low Voltage	VOL	–	–	10%	Vdd	IOH = -4 mA (Vdd_3.0 and Vdd_3.3) IOH = -3 mA (Vdd_2.8 and Vdd_2.5) IOH = -2 mA (Vdd_1.8)
<b>Input Characteristics</b>						
Input High Voltage	VIH	70%	–	–	Vdd	Pin 1, OE or ST
Input Low Voltage	VIL	–	–	30%	Vdd	Pin 1, OE or ST
Input Pull-up Impedance	Z_in	50	87	150	kΩ	Pin 1, OE logic high or logic low, or ST logic high
		2	–	–	MΩ	Pin 1, ST logic low
<b>Startup and Resume Timing</b>						
Startup Time	T_start	–	–	5	ms	Measured from the time Vdd reaches its rated minimum value
Enable/Disable Time	T_oe	–	–	138	ns	f = 77.76 MHz. For other frequencies, T_oe = 100 ns + 3*cycles
Resume Time	T_resume	–	–	5	ms	Measured from the time ST pin crosses 50% threshold
<b>Jitter</b>						
RMS Period Jitter	T_jitt	–	1.8	3	ps	f = 75 MHz, Vdd_1.8, Vdd_2.5, Vdd_2.8, Vdd_3.0, Vdd_3.3, Vdd_XX,
		–	–	3.3	ps	f = 75 MHz, Vdd_YY
Peak-to-peak Period Jitter	T_pk	–	12	25	ps	f = 75 MHz, Vdd_2.5, Vdd_2.8, Vdd_3.0, Vdd_3.3, Vdd_XX, Vdd_YY
		–	14	30	ps	f = 75 MHz, Vdd_1.8
RMS Phase Jitter (random)	T_phj	–	0.5	0.9	ps	f = 75 MHz, Integration bandwidth = 900 kHz to 7.5 MHz. Vdd_1.8, Vdd_2.5, Vdd_2.8, Vdd_3.0, Vdd_3.3, Vdd_XX
		–	1.3	2	ps	f = 75 MHz, Integration bandwidth = 12 kHz to 20 MHz. Vdd_1.8, Vdd_2.5, Vdd_2.8, Vdd_3.0, Vdd_3.3, Vdd_XX
		–	–	1.4	ps	f = 75 MHz, Integration bandwidth = 900 kHz to 7.5 MHz. Vdd_YY
		–	–	2.3	ps	f = 75 MHz, Integration bandwidth = 12 kHz to 20 MHz. Vdd_YY

Table 2. Pin Description

Pin	Symbol		Functionality
1	OE/ST, /NC	Output Enable	H <sup>[1]</sup> : specified frequency output L: output is high impedance. Only output driver is disabled.
		Standby	H <sup>[1]</sup> : specified frequency output L: output is low (weak pull down). Device goes to sleep mode. Supply current reduces to I_std.
		No Connect	Any voltage between 0 and Vdd or Open <sup>[1]</sup> : Specified frequency output. Pin 1 has no function.
2	GND	Power	Electrical ground
3	OUT	Output	Oscillator output
4	VDD	Power	Power supply voltage <sup>[2]</sup>

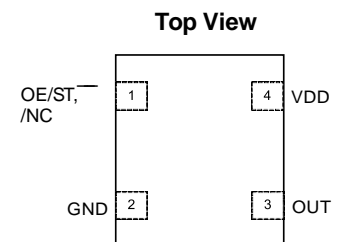


Figure 1. Pin Assignments

Notes:

- In OE or ST, mode, a pull-up resistor of 10 kΩ or less is recommended if pin 1 is not externally driven. If pin 1 needs to be left floating, use the NC option.
- A capacitor of value 0.1 μF or higher between Vdd and GND is required.

**Table 3. Absolute Maximum Limits**

Attempted operation outside the absolute maximum ratings may cause permanent damage to the part. Actual performance of the IC is only guaranteed within the operational specifications, not at absolute maximum ratings.

Parameter	Min.	Max.	Unit
Storage Temperature	-65	150	°C
Vdd	-0.5	4	V
Electrostatic Discharge	–	2000	V
Soldering Temperature (follow standard Pb free soldering guidelines)	–	260	°C
Junction Temperature <sup>[3]</sup>	–	150	°C

**Note:**

- 3. Exceeding this temperature for extended period of time may damage the device.

**Table 4. Thermal Consideration<sup>[4]</sup>**

Package	$\theta_{JA}$ , 4 Layer Board (°C/W)	$\theta_{JA}$ , 2 Layer Board (°C/W)	$\theta_{JC}$ , Bottom (°C/W)
7050	142	273	30
5032	97	199	24
3225	109	212	27
2520	117	222	26
2016	152	252	36

**Note:**

- 4. Refer to JESD51 for  $\theta_{JA}$  and  $\theta_{JC}$  definitions, and reference layout used to determine the  $\theta_{JA}$  and  $\theta_{JC}$  values in the above table.

**Table 5. Maximum Operating Junction Temperature<sup>[5]</sup>**

Max Operating Temperature (ambient)	Maximum Operating Junction Temperature
70°C	80°C
85°C	95°C

**Note:**

- 5. Datasheet specifications are not guaranteed if junction temperature exceeds the maximum operating junction temperature.

**Table 6. Environmental Compliance**

Parameter	Condition/Test Method
Mechanical Shock	MIL-STD-883F, Method 2002
Mechanical Vibration	MIL-STD-883F, Method 2007
Temperature Cycle	JESD22, Method A104
Solderability	MIL-STD-883F, Method 2003
Moisture Sensitivity Level	MSL1 @ 260°C

**Test Circuit and Waveform<sup>[6]</sup>**



**Figure 2. Test Circuit**

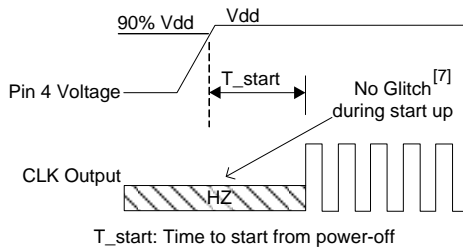


**Figure 3. Waveform**

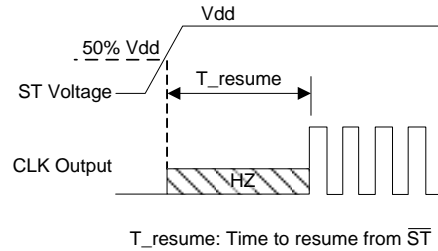
**Note:**

6. Duty Cycle is computed as  $Duty\ Cycle = TH/Period$ .

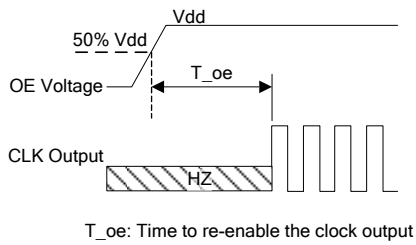
**Timing Diagrams**



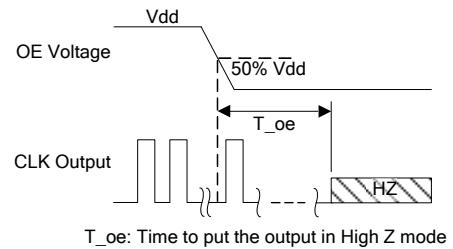
**Figure 4. Startup Timing (OE/ST,  $\overline{ST}$  Mode)**



**Figure 5. Standby Resume Timing (ST,  $\overline{ST}$  Mode Only)**



**Figure 6. OE Enable Timing (OE Mode Only)**



**Figure 7. OE Disable Timing (OE Mode Only)**

**Note:**

7. SiT1602 has “no runt” pulses and “no glitch” output during startup or resume.

Performance Plots<sup>[8]</sup>



Figure 8. Idd vs Frequency



Figure 9. Frequency vs Temperature



Figure 10. RMS Period Jitter vs Frequency



Figure 11. Duty Cycle vs Frequency

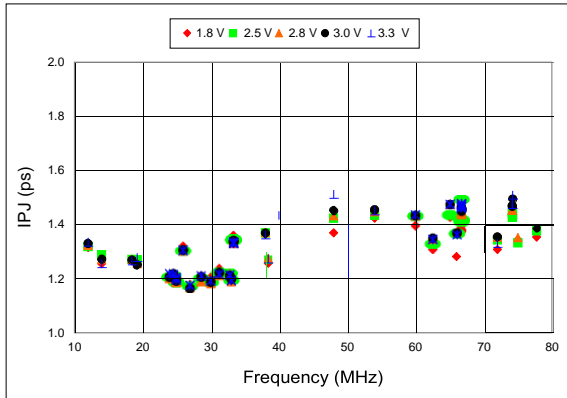


Figure 12. 20%-80% Rise Time vs Temperature

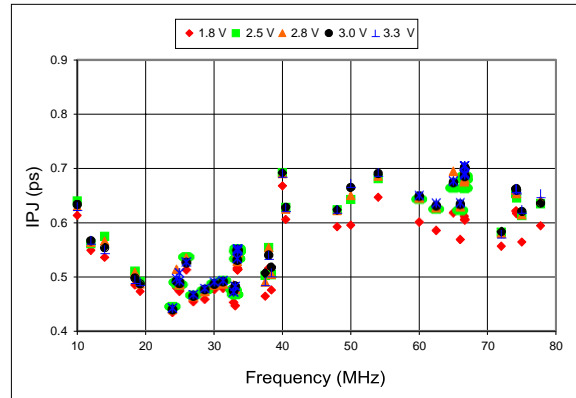


Figure 13. 20%-80% Fall Time vs Temperature

**Performance Plots<sup>[8]</sup> (continued)**



**Figure 14. RMS Integrated Phase Jitter Random (12 kHz to 20 MHz) vs Frequency<sup>[9]</sup>**



**Figure 15. RMS Integrated Phase Jitter Random (900 kHz to 20 MHz) vs Frequency<sup>[9]</sup>**

**Notes:**

- 8. All plots are measured with 15 pF load at room temperature, unless otherwise stated.
- 9. Phase noise plots are measured with Agilent E5052B signal source analyzer. Integration range is up to 5 MHz for carrier frequencies below 40 MHz.

## Programmable Drive Strength

The SiT1602 includes a programmable drive strength feature to provide a simple, flexible tool to optimize the clock rise/fall time for specific applications. Benefits from the programmable drive strength feature are:

- Improves system radiated electromagnetic interference (EMI) by slowing down the clock rise/fall time
- Improves the downstream clock receiver's (RX) jitter by decreasing (speeding up) the clock rise/fall time.
- Ability to drive large capacitive loads while maintaining full swing with sharp edge rates.

For more detailed information about rise/fall time control and drive strength selection, see the [SiTime Application Notes section](#).

## EMI Reduction by Slowing Rise/Fall Time

Figure 16 shows the harmonic power reduction as the rise/fall times are increased (slowed down). The rise/fall times are expressed as a ratio of the clock period. For the ratio of 0.05, the signal is very close to a square wave. For the ratio of 0.45, the rise/fall times are very close to near-triangular waveform. These results, for example, show that the 11<sup>th</sup> clock harmonic can be reduced by 35 dB if the rise/fall edge is increased from 5% of the period to 45% of the period.



Figure 16. Harmonic EMI reduction as a Function of Slower Rise/Fall Time

## Jitter Reduction with Faster Rise/Fall Time

Power supply noise can be a source of jitter for the downstream chipset. One way to reduce this jitter is to speed up the rise/fall time of the input clock. Some chipsets may also require faster rise/fall time in order to reduce their sensitivity to this type of jitter. Refer to the [Rise/Fall Time Tables \(Table 7 to Table 11\)](#) to determine the proper drive strength.

## High Output Load Capability

The rise/fall time of the input clock varies as a function of the actual capacitive load the clock drives. At any given drive strength, the rise/fall time becomes slower as the output load increases. As an example, for a 3.3 V SiT1602 device with default drive strength setting, the typical rise/fall time is 1 ns for 15 pF output load. The typical rise/fall time slows down to 2.6 ns when the output load increases to 45 pF. One can choose to speed up the rise/fall time to 1.83 ns by then increasing the drive strength setting on the SiT1602.

The SiT1602 can support up to 60 pF or higher in maximum capacitive loads with drive strength settings. Refer to the [Rise/Fall Time Tables \(Table 7 to 11\)](#) to determine the proper drive strength for the desired combination of output load vs. rise/fall time.

## SiT1602 Drive Strength Selection

Tables 7 through 11 define the rise/fall time for a given capacitive load and supply voltage.

- Select the table that matches the SiT1602 nominal supply voltage (1.8 V, 2.5 V, 2.8 V, 3.0 V, 3.3 V).
- Select the capacitive load column that matches the application requirement (5 pF to 60 pF)
- Under the capacitive load column, select the desired rise/fall times.
- The left-most column represents the part number code for the corresponding drive strength.
- Add the drive strength code to the part number for ordering purposes.

## Calculating Maximum Frequency

Any given rise/fall time in Table 7 through 11 dictates the maximum frequency under which the oscillator can operate with guaranteed full output swing over the entire operating temperature range. This max frequency can be calculated as the following:

$$\text{Max Frequency} = \frac{1}{5 \times \text{Trf}_{20/80}}$$

where  $\text{Trf}_{20/80}$  is the typical value for 20%-80% rise/fall time.

### Example 1

Calculate  $f_{\text{MAX}}$  for the following condition:

- Vdd = 1.8 V (Table 7)
- Capacitive Load: 30 pF
- Desired Tr/f time = 3 ns (rise/fall time part number code = E)
- $f_{\text{MAX}} = 66.666660$

Part number for the above example:

SiT1602BIE12-18E-66.666660



Drive strength code is inserted here. Default setting is “-”

**Rise/Fall Time (20% to 80%) vs C<sub>LOAD</sub> Tables**

**Table 7. V<sub>dd</sub> = 1.8 V (V<sub>dd\_1.8</sub>) Rise/Fall Times for Specific C<sub>LOAD</sub>**

Drive Strength \ C <sub>LOAD</sub>	Rise/Fall Time Typ (ns)				
	5 pF	15 pF	30 pF	45 pF	60 pF
L	6.16	11.61	22.00	31.27	39.91
A	3.19	6.35	11.00	16.01	21.52
R	2.11	4.31	7.65	10.77	14.47
B	1.65	3.23	5.79	8.18	11.08
T	0.93	1.91	3.32	4.66	6.48
E	0.78	1.66	2.94	4.09	5.74
U	0.70	1.48	2.64	3.68	5.09
F or "-": default	0.65	1.30	2.40	3.35	4.56

**Table 8. V<sub>dd</sub> = 2.5 V (V<sub>dd\_2.5</sub>) Rise/Fall Times for Specific C<sub>LOAD</sub>**

Drive Strength \ C <sub>LOAD</sub>	Rise/Fall Time Typ (ns)				
	5 pF	15 pF	30 pF	45 pF	60 pF
L	4.13	8.25	12.82	21.45	27.79
A	2.11	4.27	7.64	11.20	14.49
R	1.45	2.81	5.16	7.65	9.88
B	1.09	2.20	3.88	5.86	7.57
T	0.62	1.28	2.27	3.51	4.45
E or "-": default	0.54	1.00	2.01	3.10	4.01
U	0.43	0.96	1.81	2.79	3.65
F	0.34	0.88	1.64	2.54	3.32

**Table 9. V<sub>dd</sub> = 2.8 V (V<sub>dd\_2.8</sub>) Rise/Fall Times for Specific C<sub>LOAD</sub>**

Drive Strength \ C <sub>LOAD</sub>	Rise/Fall Time Typ (ns)				
	5 pF	15 pF	30 pF	45 pF	60 pF
L	3.77	7.54	12.28	19.57	25.27
A	1.94	3.90	7.03	10.24	13.34
R	1.29	2.57	4.72	7.01	9.06
B	0.97	2.00	3.54	5.43	6.93
T	0.55	1.12	2.08	3.22	4.08
E or "-": default	0.44	1.00	1.83	2.82	3.67
U	0.34	0.88	1.64	2.52	3.30
F	0.29	0.81	1.48	2.29	2.99

**Table 10. V<sub>dd</sub> = 3.0 V (V<sub>dd\_3.0</sub>) Rise/Fall Times for Specific C<sub>LOAD</sub>**

Drive Strength \ C <sub>LOAD</sub>	Rise/Fall Time Typ (ns)				
	5 pF	15 pF	30 pF	45 pF	60 pF
L	3.60	7.21	11.97	18.74	24.30
A	1.84	3.71	6.72	9.86	12.68
R	1.22	2.46	4.54	6.76	8.62
B	0.89	1.92	3.39	5.20	6.64
T or "-": default	0.51	1.00	1.97	3.07	3.90
E	0.38	0.92	1.72	2.71	3.51
U	0.30	0.83	1.55	2.40	3.13
F	0.27	0.76	1.39	2.16	2.85

**Table 11. V<sub>dd</sub> = 3.3 V (V<sub>dd\_3.3</sub>) Rise/Fall Times for Specific C<sub>LOAD</sub>**

Drive Strength \ C <sub>LOAD</sub>	Rise/Fall Time Typ (ns)				
	5 pF	15 pF	30 pF	45 pF	60 pF
L	3.39	6.88	11.63	17.56	23.59
A	1.74	3.50	6.38	8.98	12.19
R	1.16	2.33	4.29	6.04	8.34
B	0.81	1.82	3.22	4.52	6.33
T or "-": default	0.46	1.00	1.86	2.60	3.84
E	0.33	0.87	1.64	2.30	3.35
U	0.28	0.79	1.46	2.05	2.93
F	0.25	0.72	1.31	1.83	2.61

## Pin 1 Configuration Options (OE, ST, $\overline{\text{ST}}$ , or NC)

Pin 1 of the SiT1602 can be factory-programmed to support three modes: Output Enable (OE), standby (ST,  $\overline{\text{ST}}$ ) or No Connect (NC). These modes can also be programmed with the Time Machine using field programmable devices.

### Output Enable (OE) Mode

In the OE mode, applying logic Low to the OE pin only disables the output driver and puts it in Hi-Z mode. The core of the device continues to operate normally. Power consumption is reduced due to the inactivity of the output. When the OE pin is pulled High, the output is typically enabled in  $<1 \mu\text{s}$ .

### Standby (ST, $\overline{\text{ST}}$ ) Mode

In the ST,  $\overline{\text{ST}}$  mode, a device enters into the standby mode when Pin 1 pulled Low. All internal circuits of the device are turned off. The current is reduced to a standby current, typically in the range of a few  $\mu\text{A}$ . When ST,  $\overline{\text{ST}}$  is pulled High, the device goes through the “resume” process, which can take up to 5 ms.

### No Connect (NC) Mode

In the NC mode, the device always operates in its normal mode and outputs the specified frequency regardless of the logic level on pin 1.

Table 12 below summarizes the key relevant parameters in the operation of the device in OE, ST,  $\overline{\text{ST}}$ , or NC mode.

Table 12. OE vs. ST,  $\overline{\text{ST}}$  vs. NC

	OE	ST, $\overline{\text{ST}}$	NC
Active current 20 MHz (max, 1.8 V)	4.1 mA	4.1 mA	4.1 mA
OE disable current (max, 1.8 V)	4 mA	N/A	N/A
Standby current (typical 1.8 V)	N/A	0.6 $\mu\text{A}$	N/A
OE enable time at 77.76 MHz (max)	138 ns	N/A	N/A
Resume time from standby (max, all frequency)	N/A	5 ms	N/A
Output driver in OE disable/standby mode	High Z	weak pull-down	N/A

### Output on Startup and Resume

The SiT1602 comes with gated output. Its clock output is accurate to the rated frequency stability within the first pulse from initial device startup or resume from the standby mode.

In addition, the SiT1602 features “no runt” pulses and “no glitch” output during startup or resume as shown in the waveform captures in Figure 17 and Figure 18.



Figure 17. Startup Waveform vs. Vdd



Figure 18. Startup Waveform vs. Vdd (Zoomed-in View of Figure 17)

## Instant Samples with Time Machine and Field Programmable Oscillators

SiTime supports a field programmable version of the SiT1602 low power oscillator for fast prototyping and real time customization of features. The field programmable devices (FP devices) are available for all five standard SiT1602 package sizes and can be configured to one’s exact specification using the Time Machine II, an USB powered MEMS oscillator programmer.

### Customizable Features of the SiT1602 FP Devices Include

- 52 standard frequencies between 3.75 MHz and 77.76 MHz (Refer to the frequency list on page 12)
- Three frequency stability options,  $\pm 20$  ppm,  $\pm 25$  ppm,  $\pm 50$  ppm
- Two operating temperatures,  $-20$  to  $70^\circ\text{C}$  or  $-40$  to  $85^\circ\text{C}$
- Six supply voltage options, 1.8 V, 2.5 V, 2.8 V, 3.0 V, 3.3 V, 2.25 to 3.65 V, and 1.62 to 3.63 V continuous
- Output drive strength
- OE, ST or NC mode

For more information regarding SiTime’s field programmable solutions, see Time Machine II and Field Programmable Oscillators.

SiT1602 is typically factory-programmed per customer ordering codes for volume delivery.

Dimensions and Patterns

Package Size – Dimensions (Unit: mm) <sup>[10]</sup>	Recommended Land Pattern (Unit: mm) <sup>[11]</sup>																																																																			
<p><b>2.0 x 1.6 x 0.75 mm</b></p> <p>(TOP VIEW) (BOTTOM VIEW) (SIDE VIEW)</p> <table border="1" style="width:100%; border-collapse: collapse;"> <thead> <tr> <th></th> <th>SYMBOL</th> <th>MIN</th> <th>NOM</th> <th>MAX</th> </tr> </thead> <tbody> <tr> <td>PACKAGE THICKNESS</td> <td>A</td> <td>0.700</td> <td>0.750</td> <td>0.800</td> </tr> <tr> <td>STAND OFF</td> <td>A1</td> <td>0.000</td> <td>0.020</td> <td>0.050</td> </tr> <tr> <td rowspan="2">BODY SIZE</td> <td>X</td> <td colspan="3">D 1.600 BSC</td> </tr> <tr> <td>Y</td> <td colspan="3">E 2.000 BSC</td> </tr> <tr> <td rowspan="2">LEAD WIDTH</td> <td>b</td> <td>0.430</td> <td>0.480</td> <td>0.530</td> </tr> <tr> <td>b1</td> <td>0.230</td> <td>0.280</td> <td>0.330</td> </tr> <tr> <td rowspan="2">LEAD LENGTH</td> <td>L</td> <td>0.580</td> <td>0.680</td> <td>0.780</td> </tr> <tr> <td>L1</td> <td colspan="3">0.100 REF</td> </tr> <tr> <td>LEAD PITCH</td> <td>e</td> <td colspan="3">0.930 BSC</td> </tr> <tr> <td>RADIUS</td> <td>F</td> <td colspan="3">0.100 REF</td> </tr> <tr> <td>PACKAGE TOLERANCE</td> <td>aaa</td> <td colspan="3">0.050</td> </tr> <tr> <td>MOLD FLATNESS</td> <td>bbb</td> <td colspan="3">0.100</td> </tr> <tr> <td>COPLANARITY</td> <td>ccc</td> <td colspan="3">0.080</td> </tr> </tbody> </table> <p>NOTES                      1. Dimensioning and tolerance conform to ASME Y14.5-2009                      2. All dimensions are in millimeters.</p> <p style="text-align: right;"><b>SiTime</b>                      TITLE 4L PQFN DWG NO. POD-PQFN-004-X01620-026                      1.60x2.00x0.75 mm REV. SHEET                      DATE 01-APR-2019 A02 1 OF 2</p>		SYMBOL	MIN	NOM	MAX	PACKAGE THICKNESS	A	0.700	0.750	0.800	STAND OFF	A1	0.000	0.020	0.050	BODY SIZE	X	D 1.600 BSC			Y	E 2.000 BSC			LEAD WIDTH	b	0.430	0.480	0.530	b1	0.230	0.280	0.330	LEAD LENGTH	L	0.580	0.680	0.780	L1	0.100 REF			LEAD PITCH	e	0.930 BSC			RADIUS	F	0.100 REF			PACKAGE TOLERANCE	aaa	0.050			MOLD FLATNESS	bbb	0.100			COPLANARITY	ccc	0.080			
	SYMBOL	MIN	NOM	MAX																																																																
PACKAGE THICKNESS	A	0.700	0.750	0.800																																																																
STAND OFF	A1	0.000	0.020	0.050																																																																
BODY SIZE	X	D 1.600 BSC																																																																		
	Y	E 2.000 BSC																																																																		
LEAD WIDTH	b	0.430	0.480	0.530																																																																
	b1	0.230	0.280	0.330																																																																
LEAD LENGTH	L	0.580	0.680	0.780																																																																
	L1	0.100 REF																																																																		
LEAD PITCH	e	0.930 BSC																																																																		
RADIUS	F	0.100 REF																																																																		
PACKAGE TOLERANCE	aaa	0.050																																																																		
MOLD FLATNESS	bbb	0.100																																																																		
COPLANARITY	ccc	0.080																																																																		
<p><b>2.5 x 2.0 x 0.75 mm</b></p> <p>(TOP VIEW) (BOTTOM VIEW) (SIDE VIEW)</p> <table border="1" style="width:100%; border-collapse: collapse;"> <thead> <tr> <th></th> <th>SYMBOL</th> <th>MIN</th> <th>NOM</th> <th>MAX</th> </tr> </thead> <tbody> <tr> <td>PACKAGE THICKNESS</td> <td>A</td> <td>0.700</td> <td>0.750</td> <td>0.800</td> </tr> <tr> <td>THICKNESS</td> <td>A1</td> <td>0.000</td> <td>0.020</td> <td>0.050</td> </tr> <tr> <td rowspan="2">BODY SIZE</td> <td>X</td> <td colspan="3">D 2.000 BSC</td> </tr> <tr> <td>Y</td> <td colspan="3">E 2.500 BSC</td> </tr> <tr> <td rowspan="2">LEAD WIDTH</td> <td>b</td> <td>0.300</td> <td>0.350</td> <td>0.400</td> </tr> <tr> <td>b1</td> <td>0.650</td> <td>0.750</td> <td>0.850</td> </tr> <tr> <td>LEAD LENGTH</td> <td>L</td> <td colspan="3">0.650 BSC</td> </tr> <tr> <td>LEAD PITCH</td> <td>e</td> <td colspan="3">1.250 BSC</td> </tr> <tr> <td>PACKAGE TOLERANCE</td> <td>aaa</td> <td colspan="3">0.050</td> </tr> <tr> <td>MOLD FLATNESS</td> <td>bbb</td> <td colspan="3">0.100</td> </tr> <tr> <td>COPLANARITY</td> <td>ccc</td> <td colspan="3">0.080</td> </tr> </tbody> </table> <p>NOTES                      1. Dimensioning and tolerance conform to ASME Y14.5-2009                      2. All dimensions are in millimeters.</p> <p style="text-align: right;"><b>SiTime</b>                      TITLE 4L PQFN DWG NO. POD-PQFN-004-X02025-010                      2.00x2.50x0.75 mm REV. SHEET                      DATE 01-APR-2019 A02 1 OF 2</p>		SYMBOL	MIN	NOM	MAX	PACKAGE THICKNESS	A	0.700	0.750	0.800	THICKNESS	A1	0.000	0.020	0.050	BODY SIZE	X	D 2.000 BSC			Y	E 2.500 BSC			LEAD WIDTH	b	0.300	0.350	0.400	b1	0.650	0.750	0.850	LEAD LENGTH	L	0.650 BSC			LEAD PITCH	e	1.250 BSC			PACKAGE TOLERANCE	aaa	0.050			MOLD FLATNESS	bbb	0.100			COPLANARITY	ccc	0.080												
	SYMBOL	MIN	NOM	MAX																																																																
PACKAGE THICKNESS	A	0.700	0.750	0.800																																																																
THICKNESS	A1	0.000	0.020	0.050																																																																
BODY SIZE	X	D 2.000 BSC																																																																		
	Y	E 2.500 BSC																																																																		
LEAD WIDTH	b	0.300	0.350	0.400																																																																
	b1	0.650	0.750	0.850																																																																
LEAD LENGTH	L	0.650 BSC																																																																		
LEAD PITCH	e	1.250 BSC																																																																		
PACKAGE TOLERANCE	aaa	0.050																																																																		
MOLD FLATNESS	bbb	0.100																																																																		
COPLANARITY	ccc	0.080																																																																		

Dimensions and Patterns (continued)

Package Size – Dimensions (Unit: mm) <sup>[10]</sup>	Recommended Land Pattern (Unit: mm) <sup>[11]</sup>																																																																		
<p><b>3.2 x 2.5 x 0.75 mm</b></p> <p>(TOP VIEW) (BOTTOM VIEW) (SIDE VIEW)</p> <table border="1" style="width:100%; border-collapse: collapse;"> <thead> <tr> <th></th> <th>SYMBOL</th> <th>MIN</th> <th>NOM</th> <th>MAX</th> </tr> </thead> <tbody> <tr> <td>PACKAGE THICKNESS</td> <td>A</td> <td>0.700</td> <td>0.750</td> <td>0.800</td> </tr> <tr> <td>STAND OFF</td> <td>A1</td> <td>0.000</td> <td>0.020</td> <td>0.050</td> </tr> <tr> <td rowspan="2">BODY SIZE</td> <td>X</td> <td>D</td> <td>2.500</td> <td>BSC</td> </tr> <tr> <td>Y</td> <td>E</td> <td>3.200</td> <td>BSC</td> </tr> <tr> <td rowspan="2">LEAD WIDTH</td> <td>b</td> <td>0.800</td> <td>0.900</td> <td>1.000</td> </tr> <tr> <td>L</td> <td>0.700</td> <td>0.800</td> <td>0.900</td> </tr> <tr> <td rowspan="2">LEAD LENGTH</td> <td>L1</td> <td>0.100</td> <td>REF</td> <td></td> </tr> <tr> <td>e</td> <td>2.100</td> <td>BSC</td> <td></td> </tr> <tr> <td rowspan="2">LEAD PITCH</td> <td>F</td> <td>0.450</td> <td>REF</td> <td></td> </tr> <tr> <td>F1</td> <td>0.120</td> <td>REF</td> <td></td> </tr> <tr> <td>PACKAGE TOLERANCE</td> <td>aaa</td> <td>0.050</td> <td></td> <td></td> </tr> <tr> <td>MOLD FLATNESS</td> <td>bbb</td> <td>0.100</td> <td></td> <td></td> </tr> <tr> <td>COPLANARITY</td> <td>ccc</td> <td>0.080</td> <td></td> <td></td> </tr> </tbody> </table> <p>NOTES                      1. Dimensioning and tolerance conform to ASME Y14.5-2009                      2. All dimensions are in millimeters.</p> <p><b>SiTime</b>                      TITLE 4L PQFN DWG NO. POD-PQFN-004-X03225-002                      3.20x2.50x0.75 mm REV. SHEET                      DATE 01-APR-2019 A04 1 OF 2</p>		SYMBOL	MIN	NOM	MAX	PACKAGE THICKNESS	A	0.700	0.750	0.800	STAND OFF	A1	0.000	0.020	0.050	BODY SIZE	X	D	2.500	BSC	Y	E	3.200	BSC	LEAD WIDTH	b	0.800	0.900	1.000	L	0.700	0.800	0.900	LEAD LENGTH	L1	0.100	REF		e	2.100	BSC		LEAD PITCH	F	0.450	REF		F1	0.120	REF		PACKAGE TOLERANCE	aaa	0.050			MOLD FLATNESS	bbb	0.100			COPLANARITY	ccc	0.080			
	SYMBOL	MIN	NOM	MAX																																																															
PACKAGE THICKNESS	A	0.700	0.750	0.800																																																															
STAND OFF	A1	0.000	0.020	0.050																																																															
BODY SIZE	X	D	2.500	BSC																																																															
	Y	E	3.200	BSC																																																															
LEAD WIDTH	b	0.800	0.900	1.000																																																															
	L	0.700	0.800	0.900																																																															
LEAD LENGTH	L1	0.100	REF																																																																
	e	2.100	BSC																																																																
LEAD PITCH	F	0.450	REF																																																																
	F1	0.120	REF																																																																
PACKAGE TOLERANCE	aaa	0.050																																																																	
MOLD FLATNESS	bbb	0.100																																																																	
COPLANARITY	ccc	0.080																																																																	
<p><b>5.0 x 3.2 x 0.75 mm</b></p> <p>(TOP VIEW) (BOTTOM VIEW) (SIDE VIEW)</p> <table border="1" style="width:100%; border-collapse: collapse;"> <thead> <tr> <th></th> <th>SYMBOL</th> <th>MIN</th> <th>NOM</th> <th>MAX</th> </tr> </thead> <tbody> <tr> <td>PACKAGE THICKNESS</td> <td>A</td> <td>0.700</td> <td>0.750</td> <td>0.800</td> </tr> <tr> <td>STAND OFF</td> <td>A1</td> <td>0.000</td> <td>0.020</td> <td>0.050</td> </tr> <tr> <td rowspan="2">BODY SIZE</td> <td>X</td> <td>D</td> <td>3.200</td> <td>BSC</td> </tr> <tr> <td>Y</td> <td>E</td> <td>5.000</td> <td>BSC</td> </tr> <tr> <td rowspan="2">LEAD WIDTH</td> <td>b</td> <td>1.000</td> <td>1.100</td> <td>1.200</td> </tr> <tr> <td>L</td> <td>1.050</td> <td>1.100</td> <td>1.150</td> </tr> <tr> <td rowspan="2">LEAD LENGTH</td> <td>L1</td> <td>1.200</td> <td>REF</td> <td></td> </tr> <tr> <td>e</td> <td>2.390</td> <td>BSC</td> <td></td> </tr> <tr> <td rowspan="2">LEAD PITCH</td> <td>F</td> <td>0.575</td> <td></td> <td></td> </tr> <tr> <td>F1</td> <td>0.120</td> <td>REF</td> <td></td> </tr> <tr> <td>PACKAGE TOLERANCE</td> <td>aaa</td> <td>0.050</td> <td></td> <td></td> </tr> <tr> <td>MOLD FLATNESS</td> <td>bbb</td> <td>0.100</td> <td></td> <td></td> </tr> <tr> <td>COPLANARITY</td> <td>ccc</td> <td>0.080</td> <td></td> <td></td> </tr> </tbody> </table> <p>NOTES                      1. Dimensioning and tolerance conform to ASME Y14.5-2009                      2. All dimensions are in millimeters.</p> <p><b>SiTime</b>                      TITLE 4L PQFN DWG NO. POD-PQFN-004-X05032-003                      5.00x3.20x0.75 mm REV. SHEET                      DATE 01-APR-2019 A04 1 OF 2</p>		SYMBOL	MIN	NOM	MAX	PACKAGE THICKNESS	A	0.700	0.750	0.800	STAND OFF	A1	0.000	0.020	0.050	BODY SIZE	X	D	3.200	BSC	Y	E	5.000	BSC	LEAD WIDTH	b	1.000	1.100	1.200	L	1.050	1.100	1.150	LEAD LENGTH	L1	1.200	REF		e	2.390	BSC		LEAD PITCH	F	0.575			F1	0.120	REF		PACKAGE TOLERANCE	aaa	0.050			MOLD FLATNESS	bbb	0.100			COPLANARITY	ccc	0.080			
	SYMBOL	MIN	NOM	MAX																																																															
PACKAGE THICKNESS	A	0.700	0.750	0.800																																																															
STAND OFF	A1	0.000	0.020	0.050																																																															
BODY SIZE	X	D	3.200	BSC																																																															
	Y	E	5.000	BSC																																																															
LEAD WIDTH	b	1.000	1.100	1.200																																																															
	L	1.050	1.100	1.150																																																															
LEAD LENGTH	L1	1.200	REF																																																																
	e	2.390	BSC																																																																
LEAD PITCH	F	0.575																																																																	
	F1	0.120	REF																																																																
PACKAGE TOLERANCE	aaa	0.050																																																																	
MOLD FLATNESS	bbb	0.100																																																																	
COPLANARITY	ccc	0.080																																																																	

Dimensions and Patterns (continued)

Package Size – Dimensions (Unit: mm) <sup>[10]</sup>	Recommended Land Pattern (Unit: mm) <sup>[11]</sup>																																																																																								
<p><b>7.0 x 5.0 x 0.90 mm</b></p> <p>(TOP VIEW) (BOTTOM VIEW) (SIDE VIEW)</p>																																																																																									
<table border="1" style="width:100%; border-collapse: collapse;"> <thead> <tr> <th></th> <th>SYMBOL</th> <th>MIN</th> <th>NOM</th> <th>MAX</th> </tr> </thead> <tbody> <tr> <td>PACKAGE THICKNESS</td> <td>A</td> <td>0.800</td> <td>0.900</td> <td>1.000</td> </tr> <tr> <td>STAND OFF</td> <td>A1</td> <td>0.000</td> <td>0.020</td> <td>0.050</td> </tr> <tr> <td rowspan="2">BODY SIZE</td> <td>X</td> <td colspan="3">D 5.000 BSC</td> </tr> <tr> <td>Y</td> <td colspan="3">E 7.000 BSC</td> </tr> <tr> <td>LEAD WIDTH</td> <td>b</td> <td>1.350</td> <td>1.400</td> <td>1.450</td> </tr> <tr> <td rowspan="2">LEAD LENGTH</td> <td>L</td> <td>1.050</td> <td>1.100</td> <td>1.150</td> </tr> <tr> <td>L1</td> <td>1.200</td> <td colspan="2">REF</td> </tr> <tr> <td>LEAD PITCH</td> <td>e</td> <td colspan="3">5.080 BSC</td> </tr> <tr> <td>RADIUS</td> <td>F</td> <td colspan="3">0.080 REF</td> </tr> <tr> <td>PACKAGE TOLERANCE</td> <td>aaa</td> <td colspan="3">0.050</td> </tr> <tr> <td>MOLD FLATNESS</td> <td>bbb</td> <td colspan="3">0.100</td> </tr> <tr> <td>COPLANARITY</td> <td>ccc</td> <td colspan="3">0.080</td> </tr> <tr> <td colspan="5">NOTES</td> </tr> <tr> <td colspan="5">1. Dimensioning and tolerance conform to ASME Y14.5-2009</td> </tr> <tr> <td colspan="5">2. All dimensions are in millimeters.</td> </tr> </tbody> </table>		SYMBOL	MIN	NOM	MAX	PACKAGE THICKNESS	A	0.800	0.900	1.000	STAND OFF	A1	0.000	0.020	0.050	BODY SIZE	X	D 5.000 BSC			Y	E 7.000 BSC			LEAD WIDTH	b	1.350	1.400	1.450	LEAD LENGTH	L	1.050	1.100	1.150	L1	1.200	REF		LEAD PITCH	e	5.080 BSC			RADIUS	F	0.080 REF			PACKAGE TOLERANCE	aaa	0.050			MOLD FLATNESS	bbb	0.100			COPLANARITY	ccc	0.080			NOTES					1. Dimensioning and tolerance conform to ASME Y14.5-2009					2. All dimensions are in millimeters.					<table border="1" style="width:100%; border-collapse: collapse;"> <tr> <td colspan="2" style="text-align: center;"><b>SiTime</b></td> </tr> <tr> <td style="width: 50%;">TITLE</td> <td style="width: 50%;">DWG NO.</td> </tr> <tr> <td>4L PQFN</td> <td>POD-PQFN-004-X07050-011</td> </tr> <tr> <td>7.00x5.00x0.90 mm</td> <td>REV. SHEET</td> </tr> <tr> <td>DATE 01-APR-2019</td> <td>A02 1 OF 2</td> </tr> </table>	<b>SiTime</b>		TITLE	DWG NO.	4L PQFN	POD-PQFN-004-X07050-011	7.00x5.00x0.90 mm	REV. SHEET	DATE 01-APR-2019	A02 1 OF 2
	SYMBOL	MIN	NOM	MAX																																																																																					
PACKAGE THICKNESS	A	0.800	0.900	1.000																																																																																					
STAND OFF	A1	0.000	0.020	0.050																																																																																					
BODY SIZE	X	D 5.000 BSC																																																																																							
	Y	E 7.000 BSC																																																																																							
LEAD WIDTH	b	1.350	1.400	1.450																																																																																					
LEAD LENGTH	L	1.050	1.100	1.150																																																																																					
	L1	1.200	REF																																																																																						
LEAD PITCH	e	5.080 BSC																																																																																							
RADIUS	F	0.080 REF																																																																																							
PACKAGE TOLERANCE	aaa	0.050																																																																																							
MOLD FLATNESS	bbb	0.100																																																																																							
COPLANARITY	ccc	0.080																																																																																							
NOTES																																																																																									
1. Dimensioning and tolerance conform to ASME Y14.5-2009																																																																																									
2. All dimensions are in millimeters.																																																																																									
<b>SiTime</b>																																																																																									
TITLE	DWG NO.																																																																																								
4L PQFN	POD-PQFN-004-X07050-011																																																																																								
7.00x5.00x0.90 mm	REV. SHEET																																																																																								
DATE 01-APR-2019	A02 1 OF 2																																																																																								

Notes:

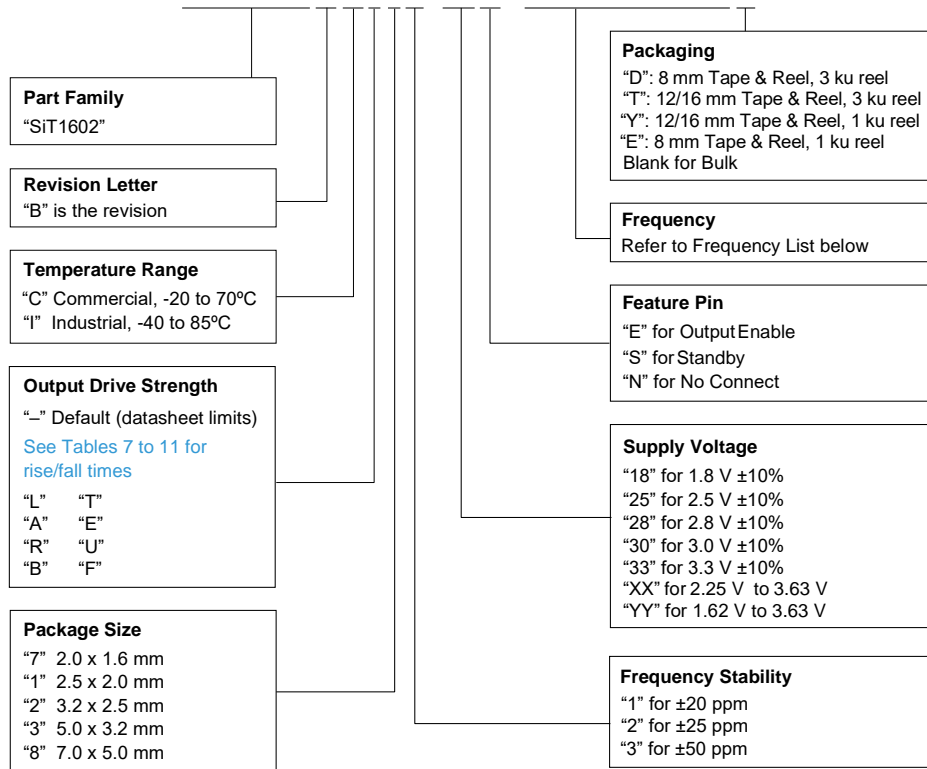
10. Top marking: Y denotes manufacturing origin and XXXX denotes manufacturing lot number. The value of “Y” will depend on the assembly location of the device.
11. A capacitor of value 0.1  $\mu$ F or higher between Vdd and GND is required.

## Ordering Information

The Part No. Guide is for reference only.

To customize and build an exact part number, use the SiTime [Part Number Generator](#).

### SiT1602BC-12-18E-66.666660D



**Table 13. List of Supported Frequencies**

3.57 MHz	4 MHz	4.096 MHz	6 MHz	7.3728 MHz	8.192 MHz	10 MHz	12 MHz	14 MHz
18.432 MHz	19.2 MHz	20 MHz	24 MHz	24.576 MHz	25 MHz	25.000625 MHz	26 MHz	27 MHz
28.6363 MHz	30 MHz	31.25 MHz	32.768 MHz	33 MHz	33.3 MHz	33.33 MHz	33.333 MHz	33.3333 MHz
33.33333 MHz	35.84 MHz	37.5 MHz	38 MHz	38.4 MHz	40 MHz	40.5 MHz	48 MHz	50 MHz
54 MHz	60 MHz	62.5 MHz	65 MHz	66 MHz	66.6 MHz	66.66 MHz	66.666 MHz	66.6666 MHz
66.66666 MHz	72 MHz	74.175824 MHz	74.176 MHz	74.25 MHz	75 MHz	77.76 MHz		

**Table 14. Ordering Codes for Supported Tape & Reel Packing Method**

Device Size (mm x mm)	16 mm T&R (3 ku)	16 mm T&R (1 ku)	12 mm T&R (3 ku)	12 mm T&R (1 ku)	8 mm T&R (3 ku)	8 mm T&R (1 ku)
2.0 x 1.6	–	–	–	–	D	E
2.5 x 2.0	–	–	–	–	D	E
3.2 x 2.5	–	–	–	–	D	E
5.0 x 3.2	–	–	T	Y	–	–
7.0 x 5.0	T	Y	–	–	–	–

**Table 15. Additional Information**

Document	Description	Download Link
<b>Time Machine II</b>	MEMS oscillator programmer	<a href="http://www.sitime.com/support/time-machine-oscillator-programmer">http://www.sitime.com/support/time-machine-oscillator-programmer</a>
<b>Field Programmable Oscillators</b>	Devices that can be programmable in the field by Time Machine II	<a href="http://www.sitime.com/products/field-programmable-oscillators">http://www.sitime.com/products/field-programmable-oscillators</a>
<b>Manufacturing Notes</b>	Tape & Reel dimension, reflow profile and other manufacturing related info	<a href="https://www.sitime.com/sites/default/files/gated/Manufacturing-Notes-for-SiTime-Products.pdf">https://www.sitime.com/sites/default/files/gated/Manufacturing-Notes-for-SiTime-Products.pdf</a>
<b>Qualification Reports</b>	RoHS report, reliability reports, composition reports	<a href="http://www.sitime.com/support/quality-and-reliability">http://www.sitime.com/support/quality-and-reliability</a>
<b>Performance Reports</b>	Additional performance data such as phase noise, current consumption and jitter for selected frequencies	<a href="http://http://www.sitime.com/support/performance-measurement-report">http://http://www.sitime.com/support/performance-measurement-report</a>
<b>Termination Techniques</b>	Termination design recommendations	<a href="http://www.sitime.com/support/application-notes">http://www.sitime.com/support/application-notes</a>
<b>Layout Techniques</b>	Layout recommendations	<a href="http://www.sitime.com/support/application-notes">http://www.sitime.com/support/application-notes</a>

**Table 16. Revision History**

Revision	Release Date	Change Summary
0.9	1-Apr-2014	Preliminary
1.0	14-May-2014	Removed preliminary Updated max spec for current consumption and OE disable current Updated the maximum operating junction temperature Updated the current consumption and OE disable current in Table 12 Updated performance plots 8 and 10 Revised the formula for calculating the max frequency with different rise/fall time options
1.01	7-May-2015	Added 20 MHz to the frequency selection Revised the Electrical Characteristics, Timing Diagrams and Performance Plots Revised 2016 PKG diagram
1.02	18-Jun-2015	Added 16 mm T&R information to <a href="#">Table 14</a> Revised 12 mm T&R information to <a href="#">Table 14</a>
1.03	30-Aug-2016	Revised part number example in the ordering information
1.04	9-Jan-2018	Updated logo and company address, other page layout changes Revised 2520 package land pattern
1.05	8-Jul-2020	Updated ordering information with "YY" supply voltage option Updated ordering information with note
1.06	27-Jan-2021	Removed Note 12 Added Rise/Fall Time, RMS Period Jitter, and RMS Phase Jitter specifications for "YY" supply voltage Various formatting changes
1.07	10-Mar-2021	Updated Dimensions and Patterns drawings Updated hyperlinks, trademarks and changed rev table date format
1.08	1-Jan-2023	Updated company disclaimer, links, references and icons

**SiTime Corporation, 5451 Patrick Henry Drive, Santa Clara, CA 95054, USA | Phone: +1-408-328-4400 | Fax: +1-408-328-4439**

© SiTime Corporation 2015-2023. The information contained herein is subject to change at any time without notice. SiTime assumes no responsibility or liability for any loss, damage or defect of a Product which is caused in whole or in part by (i) use of any circuitry other than circuitry embodied in a SiTime product, (ii) misuse or abuse including static discharge, neglect or accident, (iii) unauthorized modification or repairs which have been soldered or altered during assembly and are not capable of being tested by SiTime under its normal test conditions, or (iv) improper installation, storage, handling, warehousing or transportation, or (v) being subjected to unusual physical, thermal, or electrical stress.

**Disclaimer:** SiTime makes no warranty of any kind, express or implied, with regard to this material, and specifically disclaims any and all express or implied warranties, either in fact or by operation of law, statutory or otherwise, including the implied warranties of merchantability and fitness for use or a particular purpose, and any implied warranty arising from course of dealing or usage of trade, as well as any common-law duties relating to accuracy or lack of negligence, with respect to this material, any SiTime product and any product documentation. This product is not suitable or intended to be used in a life support application or component, to operate nuclear facilities, in military or aerospace applications, or in other mission critical applications where human life may be involved or at stake. All sales are made conditioned upon compliance with the critical uses policy set forth below.

**CRITICAL USE EXCLUSION POLICY**

BUYER AGREES NOT TO USE SITIME'S PRODUCTS FOR ANY APPLICATION OR IN ANY COMPONENTS: USED IN LIFE SUPPORT DEVICES, TO OPERATE NUCLEAR FACILITIES, FOR MILITARY OR AEROSPACE USE, OR IN OTHER MISSION CRITICAL APPLICATIONS OR COMPONENTS WHERE HUMAN LIFE OR PROPERTY MAY BE AT STAKE.

For aerospace and defense applications, SiTime recommends using only [Endura™ ruggedized products](#).

SiTime owns all rights, title and interest to the intellectual property related to SiTime's products, including any software, firmware, copyright, patent, or trademark. The sale of SiTime products does not convey or imply any license under patent or other rights. SiTime retains the copyright and trademark rights in all documents, catalogs and plans supplied pursuant to or ancillary to the sale of products or services by SiTime. Unless otherwise agreed to in writing by SiTime, any reproduction, modification, translation, compilation, or representation of this material shall be strictly prohibited.

# Supplemental Information

The Supplemental Information section is not part of the datasheet and is for informational purposes only.

## Best Reliability

Silicon is inherently more reliable than quartz. Unlike quartz suppliers, SiTime has in-house MEMS and analog CMOS expertise, which allows SiTime to develop the most reliable products. Figure 1 shows a comparison with quartz technology.

### Why is SiTime MEMS Best in Class:

- SiTime's MEMS resonators are vacuum sealed using an advanced EpiSeal® process, which eliminates foreign particles and improves long term aging and reliability
- World-class MEMS and CMOS design expertise



Figure 1. Reliability Comparison<sup>[1]</sup>

## Best Aging

Unlike quartz, MEMS oscillators have excellent long term aging performance which is why every new SiTime product specifies 10-year aging. A comparison is shown in Figure 2.

### Why is SiTime Best in Class:

- SiTime's MEMS resonators are vacuum sealed using an advanced EpiSeal® process, which eliminates foreign particles and improves long term aging and reliability
- Inherently better immunity of electrostatically driven MEMS resonator



Figure 2. Aging Comparison<sup>[2]</sup>

## Best Electro Magnetic Susceptibility (EMS)

SiTime's oscillators in plastic packages are up to 54 times more immune to external electromagnetic fields than quartz oscillators as shown in Figure 3.

### Why is SiTime Best in Class:

- Internal differential architecture for best common mode noise rejection
- Electrostatically driven MEMS resonator is more immune to EMS

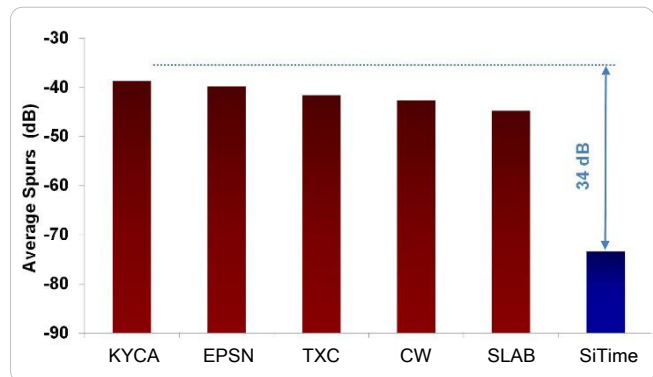


Figure 3. Electro Magnetic Susceptibility (EMS)<sup>[3]</sup>

## Best Power Supply Noise Rejection

SiTime's MEMS oscillators are more resilient against noise on the power supply. A comparison is shown in Figure 4.

### Why is SiTime Best in Class:

- On-chip regulators and internal differential architecture for common mode noise rejection
- MEMS resonator is paired with advanced analog CMOS IC



Figure 4. Power Supply Noise Rejection<sup>[4]</sup>

## Best Vibration Robustness

High-vibration environments are all around us. All electronics, from handheld devices to enterprise servers and storage systems are subject to vibration. Figure 5 shows a comparison of vibration robustness.

### Why is SiTime Best in Class:

- The moving mass of SiTime’s MEMS resonators is up to 3000 times smaller than quartz
- Center-anchored MEMS resonator is the most robust design



Figure 5. Vibration Robustness<sup>[5]</sup>

### Figure labels:

- TXC = TXC
- Epson = EPSN
- Connor Winfield = CW
- Kyocera = KYCA
- SiLabs = SLAB
- SiTime = EpiSeal MEMS

## Best Shock Robustness

SiTime’s oscillators can withstand at least 50,000 g shock. They all maintain their electrical performance in operation during shock events. A comparison with quartz devices is shown in Figure 6.

### Why is SiTime Best in Class:

- The moving mass of SiTime’s MEMS resonators is up to 3000 times smaller than quartz
- Center-anchored MEMS resonator is the most robust design



Figure 6. Shock Robustness<sup>[6]</sup>

**Notes:**

1. Data source: Reliability documents of named companies.
2. Data source: SiTime and quartz oscillator devices datasheets.
3. Test conditions for Electro Magnetic Susceptibility (EMS):
  - According to IEC EN61000-4.3 (Electromagnetic compatibility standard)
  - Field strength: 3V/m
  - Radiated signal modulation: AM 1 kHz at 80% depth
  - Carrier frequency scan: 80 MHz – 1 GHz in 1% steps
  - Antenna polarization: Vertical
  - DUT position: Center aligned to antenna

**Devices used in this test:**

Label	Manufacturer	Part Number	Technology
EpiSeal MEMS	SiTime	SiT9120AC-1D2-33E156.250000	MEMS + PLL
EPSN	Epson	EG-2102CA156.2500M-PHPAL3	Quartz, SAW
TXC	TXC	BB-156.250MBE-T	Quartz, 3 <sup>rd</sup> Overtone
CW	Conner Winfield	P123-156.25M	Quartz, 3 <sup>rd</sup> Overtone
KYCA	AVX Kyocera	KC7050T156.250P30E00	Quartz, SAW
SLAB	SiLab	590AB-BDG	Quartz, 3 <sup>rd</sup> Overtone + PLL

4. 50 mV pk-pk Sinusoidal voltage.

**Devices used in this test:**

Label	Manufacturer	Part Number	Technology
EpiSeal MEMS	SiTime	SiT8208AI-33-33E-25.000000	MEMS + PLL
NDK	NDK	NZ2523SB-25.6M	Quartz
KYCA	AVX Kyocera	KC2016B25M0C1GE00	Quartz
EPSN	Epson	SG-310SCF-25M0-MB3	Quartz

5. Devices used in this test:  
same as EMS test stated in Note 3.
6. Test conditions for shock test:
  - MIL-STD-883F Method 2002
  - Condition A: half sine wave shock pulse, 500-g, 1ms
  - Continuous frequency measurement in 100  $\mu$ s gate time for 10 seconds

**Devices used in this test:**

same as EMS test stated in Note 3.

7. Additional data, including setup and detailed results, is available upon request to qualified customer. Please contact [productsupport@sitime.com](mailto:productsupport@sitime.com).

## Looking for pricing, stock, or lifecycle information?

Click below to explore more details on WIN SOURCE:

 [View SIT1602BI-72-33E-66.666660 on WIN SOURCE](#)

 [SiTIME Information](#)

## Optimize Your Supply Chain with WIN SOURCE Solutions

-  Global Sourcing Solution
-  Obsolete Management
-  Cost Control Management
-  Shortage Management
-  Alternative Solution
-  Excess Inventory Management