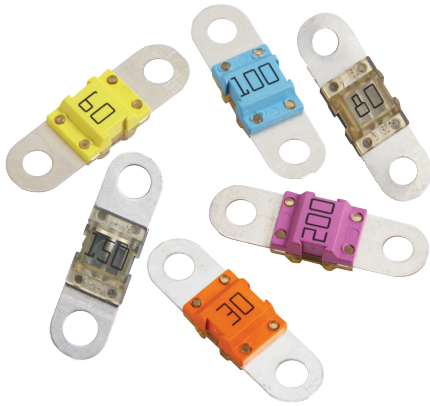




THE DATASHEET OF
153.5631.5801



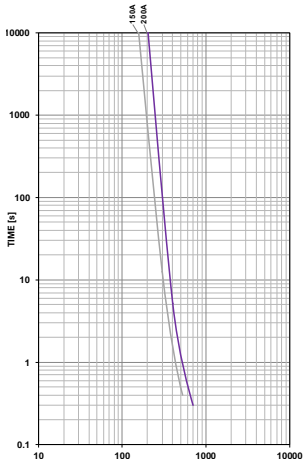
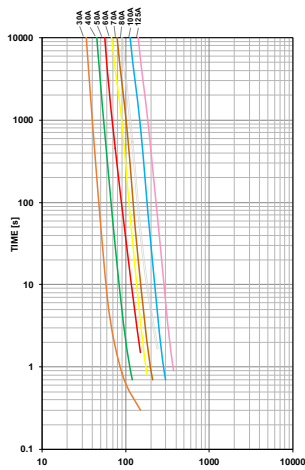


BF1 Fuses



One Hole BF1 Fuses

Time-Current Characteristic Curves



BF1 Fuse Rated 32V

This BF1 fuse is rated at 32V and offers a bolt-on fuse for high current wiring protection. Current rating 23A - 200A; with transparent housing material for easy detection of blown fuses. One-Hole BF1 fuses have a current rating 60-125A.

Specifications

| | | |
|--|---|---------------|
| Voltage Rating: | 32 VDC | |
| Interrupting Rating: | 30A: | 1000A @32 VDC |
| | 40A - 150A: | 2000A @32 VDC |
| | 200A: | 1500A @32 VDC |
| Recommended Environmental Temperature: | -40° to 125°C | |
| Terminals Material: | Tin plated copper alloy | |
| Housing Material: | PET-GF33 (U.L. 94 Flammability rating – V0) | |
| Clear Housing Material: | PES (U.L. 94 Flammability rating – V0) | |
| Mounting Torque M5: | 4.5 Nm +/- 1Nm | |
| Mounting Torque M6: | 6.0 Nm +/- 1Nm | |
| Refers to: | ISO 8820-5:2015, UL 248 Special Purpose Fuses | |



Ordering Information

| Part Number | Rated Current | Package Size | Bolt Size | Bolt Hole Qty |
|---------------|---------------|--------------|-----------|---------------|
| 153.5631.xxx2 | 30A-200A | 1000 | M5 | 2 |
| 153.5631.xxx1 | 30A-200A | 10 | M5 | 2 |
| 153.7010.xxx2 | 30A-150A | 1000 | M6 | 2 |
| 153.7000.xxx2 | 150-200A | 500 | M6 | 2 |
| 153.0010.xxx2 | 60A-125A | 1000 | M6 | 1 |
| 153.0020.xxx2 | 30A-200A | 500 | -- | 0 |

Time-Current Characteristics

| % of Rating | Opening Time Min / Max (s) | |
|-------------|----------------------------|-------------|
| | 30-125A | 150-200A |
| 75 | - / - | 360,000 / ∞ |
| 100 | 360,000 / ∞ | - / - |
| 110 | 14,400 / ∞ | - / - |
| 150 | 90 / 3,600 | - / - |
| 200 | 3 / 100 | 1 / 15 |
| 300 | 0.3 / 3 | - / - |
| 350 | - / - | 0.3 / 5 |
| 500 | 0.1 / 1 | - / - |
| 600 | - / - | 0.1 / 1 |

Ratings

| Part Number | Current Rating (A) | Housing Material Color | Test Cable Size (mm ²) | Typ. Voltage Drop (mV) | Typ. Cold Resistance (mΩ) | Typ. I ² t (A ² s) |
|----------------|--------------------|------------------------|------------------------------------|------------------------|---------------------------|--|
| 153.xxxx.530_ | 30 | Orange | 2.5 | 105 | 2.70 | 5,100 |
| 153.xxxx.540_ | 40 | Green | 4 | 90 | 1.56 | 6,800 |
| 153.xxxx.550_ | 50 | Red | 6 | 80 | 1.03 | 6,900 |
| 153.xxxx.560_ | 60 | Yellow | 6 | 75 | 0.75 | 16,200 |
| 153.xxxx.570_ | 70 | Brown | 10 | 70 | 0.64 | 22,000 |
| 153.xxxx.580_ | 80 | White | 10 | 70 | 0.55 | 25,600 |
| 153.xxxx.610_ | 100 | Blue | 16 | 70 | 0.44 | 42,500 |
| 153.xxxx.612_ | 125 | Pink | 25 | 70 | 0.34 | 62,500 |
| 153.xxxx.615_1 | 150 | Grey | 25 | 70 | 0.29 | 83,400 |
| 153.xxxx.620_3 | 200 | Purple | 35 | 70 | 0.24 | 126,000 |

Note 1: Short Circuit Protector only

The typical I²t is an average value calculated from the breaking capacity tests by using the melting time before the arcing occurs.

REV07272021

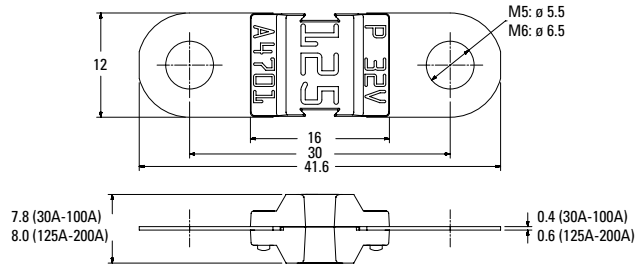
Littelfuse® products are not designed for, and shall not be used for, any purpose (including, without limitation, automotive, military, aerospace, medical, life-saving, life-sustaining or nuclear facility applications, devices intended for surgical implant into the body, or any other application in which the failure or lack of desired operation of the product may result in personal injury, death, or property damage) other than those expressly set forth in applicable Littelfuse® product documentation. Warranties granted by Littelfuse® shall be deemed void for products used for any purpose not expressly set forth in applicable Littelfuse® documentation. Littelfuse® shall not be liable for any claims or damages arising out of products used in applications not expressly intended by Littelfuse® as set forth in applicable Littelfuse® documentation. The sale and use of Littelfuse® products is subject to Littelfuse Terms and Conditions of Sale, unless otherwise agreed by Littelfuse®.

BF1 Fuse Rated 32V

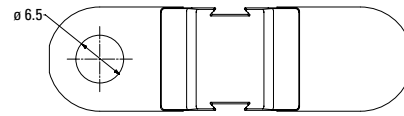
Dimensions

Dimensions in mm for reference only.
See outline drawing for dimensions and tolerances.

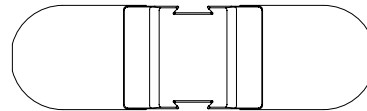
BF1 2 Holes M5/M6 versions



BF1 1 Hole M6 version

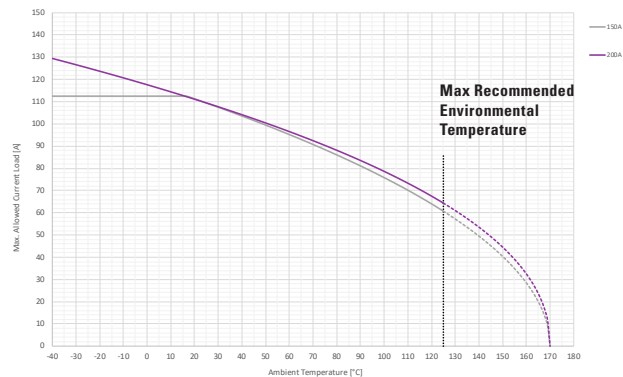
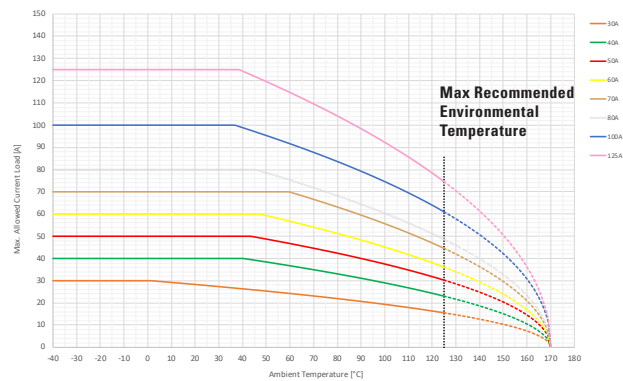


BF1 No Holes versions



Typical Derating of Fuse Melting Element

Temperature Security Margin is 20%
Please contact Littelfuse® for Details Regarding Derating Test Set-Up.



Temperature Table

| | max. allowed current load [A] at ambient temperature (typical derating) | | | | | | |
|-------------|---|-----|------|------|------|-------|-------|
| | -40°C | 0°C | 20°C | 65°C | 85°C | 110°C | 125°C |
| 30A | 30 | 30 | 28 | 24 | 21 | 18 | 16 |
| 40A | 40 | 40 | 40 | 36 | 32 | 27 | 23 |
| 50A | 50 | 50 | 50 | 46 | 41 | 35 | 30 |
| 60A | 60 | 60 | 60 | 55 | 50 | 42 | 36 |
| 70A | 70 | 70 | 70 | 68 | 61 | 51 | 45 |
| 80A | 80 | 80 | 80 | 74 | 66 | 56 | 49 |
| 100A | 100 | 100 | 100 | 90 | 81 | 70 | 61 |
| 125A | 125 | 125 | 125 | 112 | 101 | 86 | 75 |
| 150A | 113 | 113 | 111 | 93 | 84 | 70 | 61 |
| 200A | 129 | 118 | 111 | 95 | 86 | 73 | 64 |

Derating curves may change depending on the final condition of the application (terminals characteristics, wire size etc.). Please ask Littelfuse for more information.

REV07272021

Littelfuse® products are not designed for, and shall not be used for, any purpose (including, without limitation, automotive, military, aerospace, medical, life-saving, life-sustaining or nuclear facility applications, devices intended for surgical implant into the body, or any other application in which the failure or lack of desired operation of the product may result in personal injury, death, or property damage) other than those expressly set forth in applicable Littelfuse® product documentation. Warranties granted by Littelfuse® shall be deemed void for products used for any purpose not expressly set forth in applicable Littelfuse® documentation. Littelfuse® shall not be liable for any claims or damages arising out of products used in applications not expressly intended by Littelfuse® as set forth in applicable Littelfuse® documentation. The sale and use of Littelfuse® products is subject to Littelfuse Terms and Conditions of Sale, unless otherwise agreed by Littelfuse®.

Looking for pricing, stock, or lifecycle information?

Click below to explore more details on WIN SOURCE:

 [View 153.5631.5801 on WIN SOURCE](#)

 [Littelfuse Inc. Information](#)

Optimize Your Supply Chain with WIN SOURCE Solutions

-  Global Sourcing Solution
-  Obsolete Management
-  Cost Control Management
-  Shortage Management
-  Alternative Solution
-  Excess Inventory Management