



**THE DATASHEET OF
APE1F-2M-10-Z**

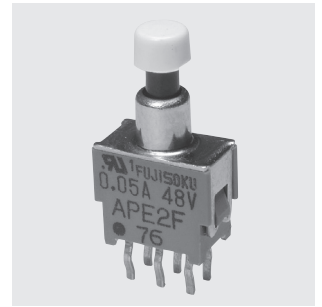


APE

Subminiature Pushbutton Switches

Washable

RoHS Compliant



UL

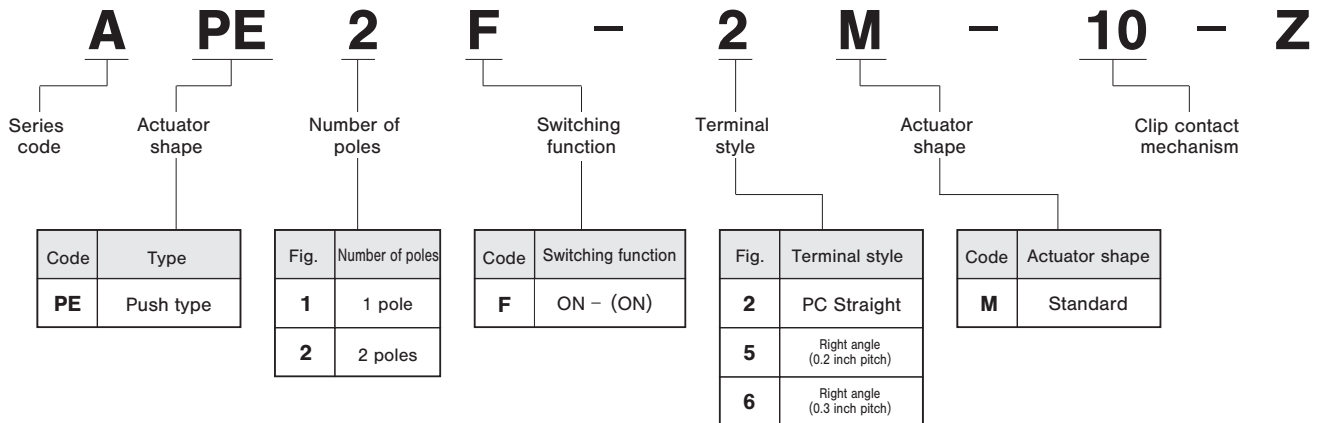
Features

1. Twin-contact clip mechanism for high reliability.
2. Process sealed structure
3. Gold-plated contacts.
4. Terminal pin pitch: 2.54 mm.
5. UL recognized

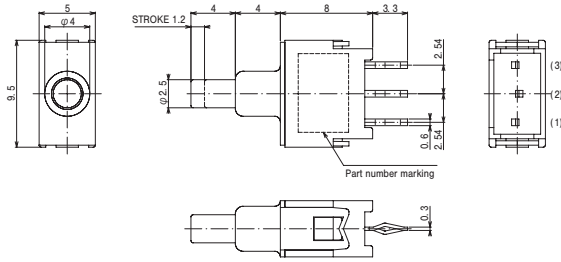
Specifications

Rating	0.4 VA AC/DC Max.:50 mA 60 VAC/DC Min.:1 μ A 20 mVAC/DC UL:48 VAC/DC 50 mA
Initial contact resistance	50 m Ω max. (1.5mA 200 μ VAC)
Dielectric strength	250 VAC 1 minute
Initial Insulation resistance	500 M Ω min. (500 VDC)
Electrical life	10,000 operations at maximum rating. 30,000 operations at 0.4 VA
Operating force	0.78 ~ 2.94 N
Operating temperature range	-20~+85 $^{\circ}$ C
Storage temperature range	-40~+85 $^{\circ}$ C

Part Numbering



SPDT

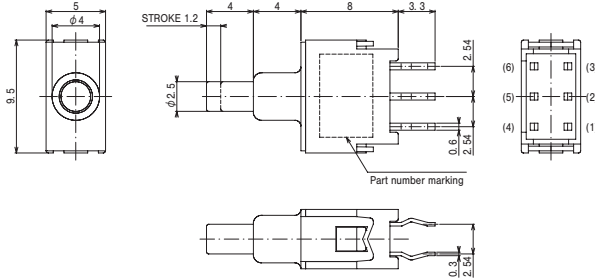


PC Straight

Terminal number not shown on box.

Switching function		Push
Part No.	APE1F-2M-10-Z	(ON)
Connecting terminals	2-3	2-1

DPDT

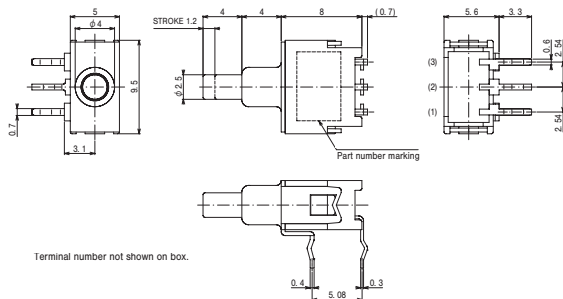
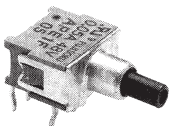


PC Straight

Terminal number not shown on box.

Switching function		Push
Part No.	APE2F-2M-10-Z	(ON)
Connecting terminals	2-3 5-6	2-1 5-4

SPDT

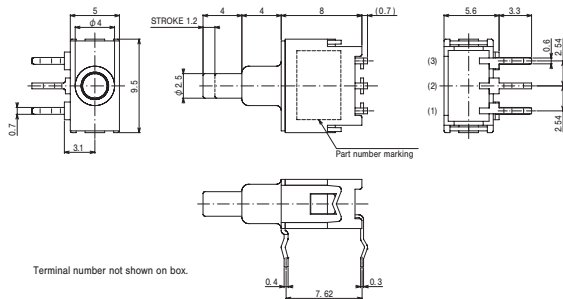
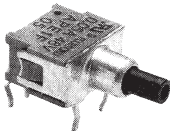


0.2R/A

Terminal number not shown on box.

Switching function		Push
Part No.	★APE1F-5M-10-Z	(ON)
Connecting terminals	2-3	2-1

SPDT

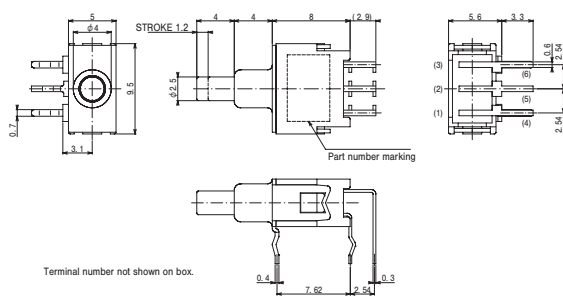
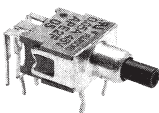


0.3R/A

Terminal number not shown on box.

Switching function		Push
Part No.	APE1F-6M-10-Z	(ON)
Connecting terminals	2-3	2-1

DPDT



0.3R/A

Terminal number not shown on box.

Switching function		Push
Part No.	☆APE2F-6M-10-Z	(ON)
Connecting terminals	2-3 5-6	2-1 5-4

Table of Part Numbers

Term.style	Poles	Switching function	Part Number
PC Straight	1 pole	ON - (ON)	APE1F-2M-10-Z
	2 poles		APE2F-2M-10-Z
0.3R/A	1 pole		APE1F-6M-10-Z
	2 poles		☆APE2F-6M-10-Z
0.2R/A	1 pole		★APE1F-5M-10-Z

(ON) : Momentary.

☆ : Semi-standard products.

★ : Made to order products.

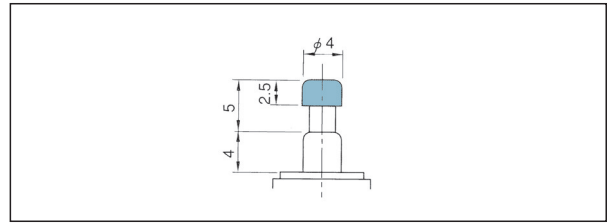
APE

■ **Optional Accessories**(10pcs./pack)
(AP•APE)

《Sold separately》

Color Cap for AP-M, APE-M & AP-S series		
Dimensions	Color	Part No.
<p>PC resin</p>	White	140000481402
	Red	140000481404
	Black	140000481403
	Gray	140000481408

■ **Color Cap Mounting**

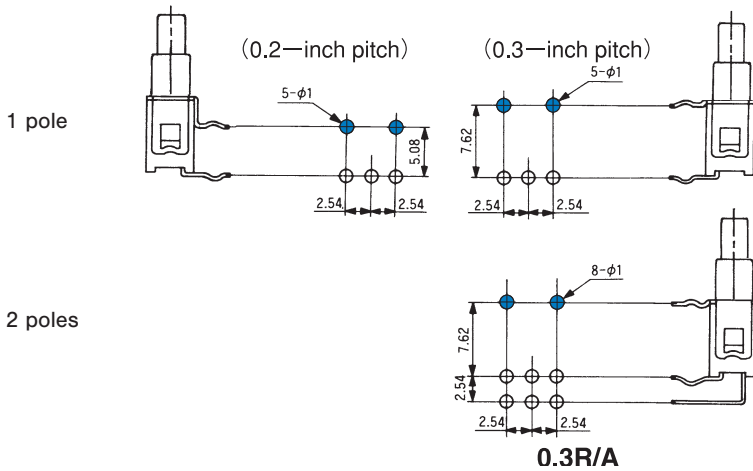


■ **Optional Accessories (AP • APE)**

《Sold separately》

Part name	Bracket		
	Single pole	Double poles	
Poles	Single pole	7.5 mm	5 mm
Box size	5 mm	7.5 mm	5 mm
Type	AP-M•APE-M•AP-H	AP-M•AP-H•APE-M	APE-M
Dimensions			
Part No.	140000640314	140000640315	140000640318

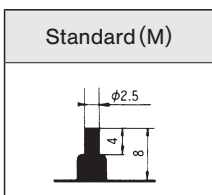
■ **Right angle terminals**



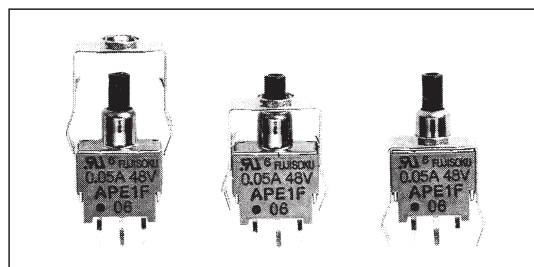
● The space between the terminal rows are available in two dimensions: 0.2 inches (5.08 mm) and 0.3 inches (7.62 mm).

[Example] 0.2-inch pitch : APE1F-5M-10-Z
0.3-inch pitch : APE1F-6M-10-Z

■ **Button Shape**



■ **Bracket Installation Procedure**



Mounting of Switch

- Use PC boards with hole diameter of 1mm.
- Do not bend the terminal pins before mounting the switch on the PC board.
- After mounting the switch, do not place the device in such a way that the device weight will be applied on to the actuator of the switch.
- Do not apply load exceeding 12.7 N to the actuator. If load exceeding 12.7 N is expected to be applied to the actuator, please use a Bracket (optional accessory sold separately). Maximum load will be 29.4 N when a Bracket is used.
- Use Bracket 140000640314 or 140000640318 for side-by-side mounting.
- To increase mounting strength, use Bracket 140000640315.
- PC Hole Layouts will change depending on the Bracket.

PC Hole Layouts (AP • APE)

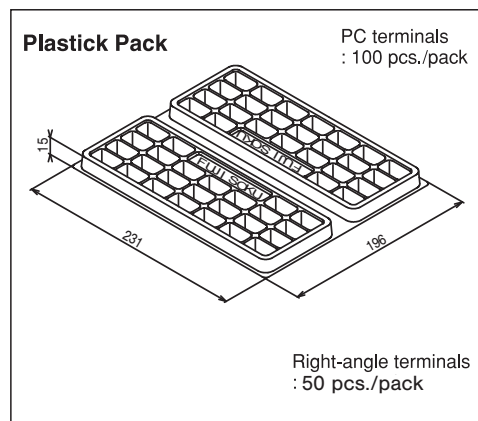
PC Straight

Mounting Type		Without Bracket	When optional Bracket is used.		
			140000640314	140000640315	140000640318
AP-M AP-S AP-H APE	1 pole				
	2 poles				
	APE				

Right-angle Terminal

Terminal Type		0.2-inch pitch	0.3-inch pitch
		AP-M AP-S APE	1 pole
2 poles			

Packaging Specification



■ Soldering Specifications

(1) Manual Soldering

Device : Soldering iron
380°C, Max.; 3 seconds, Max.

(2) Auto Soldering

Device : Jet wave type or dip type
275°C, Max.; 6 seconds, Max.

- Pre-heating should be done at temperatures ranging from 80°C to 120°C and within 120 seconds.

■ Flux Cleaning



(1) Solvent : Fluorine or Alcohol type.

(2) Cleaning after soldering should be done after the terminal temperature falls to 90°C or below, or after leaving the switch for five minutes or longer at room temperature.

(3) Do not use ultrasonic cleaning.

Looking for pricing, stock, or lifecycle information?

Click below to explore more details on WIN SOURCE:

-  [View APE1F-2M-10-Z on WIN SOURCE](#)
-  [Nidec Copal Electronics Information](#)

Optimize Your Supply Chain with WIN SOURCE Solutions

-  Global Sourcing Solution
-  Obsolete Management
-  Cost Control Management
-  Shortage Management
-  Alternative Solution
-  Excess Inventory Management