



**THE DATASHEET OF
ATP16-DL5-606-B3SA-04G**



ATP16 Series Anti-Vandal Sealed Pushbutton Switch

Pushbutton
A

Features/Benefits

- Momentary or Lock version
- IP67 sealed
- Rated at 2A / 36 Vdc
- 1,000,000 life cycle
- Various colors of LED illuminate indicator
- Choices of actuator with ring or power logo
- RoHS compliant

Typical Applications

- Alarm, safety and security systems
- Intercom "push-to-talk" devices
- Automatic food and drink vending machines
- Parking lot ticket machines & ticket paying stations
- Industrial Instruments



Specifications

FUNCTION: SPST
CONTACT ARRANGEMENT: N.O.
MOUNTING TYPE: Threaded front panel mount
TORQUE FOR THREADED BODY: 11.5 kgf/cm

Mechanical

OPERATING LIFE: Momentary 1,000,000 cycles
Lock 100,000 cycles
TOTAL TRAVEL: Momentary 2.0 mm; Lock 2.3 mm
OPERATING FORCE: 4.5 ± 1.5N

Electrical

CONTACT RATING: 2A / 36Vdc
OPERATING LIFE: Make-and-break cycles at full load
200,000 (Momentary)
100,000 (Lock)
DIELECTRIC STRENGTH: 2,000 V RMS @ sea level
INSULATION RESISTANCE: 1,000 MΩ min. @ 500 VDC
INITIAL CONTACT RESISTANCE : 50 mΩ max @1A 12VDC

Materials

BUSHING: Stainless steel / Aluminum alloy, anodized
BASE: PBT (UL 94-A0), Nylon 6/6 (lock version)
ACTUATOR: PC (UL 94-V2); POM (lock version)
INTERNAL ASSEMBLY: POM / PA66
SPRING: Steel
SEALING / O-ring: Silicone (Translucent) / Silicone
TERMINALS / CONTACT: Brass, Silver or gold plated
HEX NUT: Brass (Nickel plated)

Operating Environment

OPERATING TEMPERATURE: -20°C to +70°C
SEALING / PROTECTION: IP67

NOTE: Specifications and materials listed above are for switches with standard options. For information on specific and custom switches, please contact Customer Service.

Build-A-Switch

To order, simply select desired option from each category and place in the appropriate box.



Designation
ATP16 Series

Actuator Style
D Dome*
S Standard**

Actuator Indicator
L1 Ring
L5 Ring & Power logo

LED Illumination

Color	Dual color
0 Without LED	A Red & Green
2 White	R RGB***
3 Red	
4 Orange***	
5 Yellow	
6 Green	
7 Blue	

LED voltage DC
00 Without LED
03 3V
06 6V
12 12V
24 24V

Terminal plating
G Gold flash

Termination
04 Solder lug
W1 Wire lead 500mm ****

Mechanical function
A Momentary (Double D bushing)
E Lock (D shape bushing)

Contact arrangement
S SPST

Bushing type

B3 Al alloy (Black anodized)
B4 Al alloy (Natural anodized)
M0 Stainless (Natural), Round***
M4 Stainless (Natural), Double D***

* For bushing type B3 and B4 only.

** Available on bushing type M0 & M4 only.

*** Available on momentary function only.

**** Available upon request, please consult your sales representative for details.

ATP16 Series Anti-Vandal Sealed Pushbutton Switch

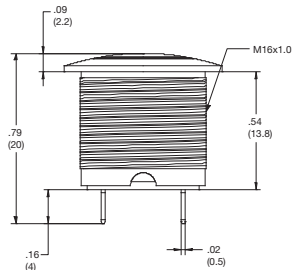


A
Pushbutton

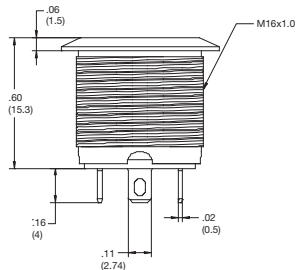
STANDARD VIEW

MOMENTARY

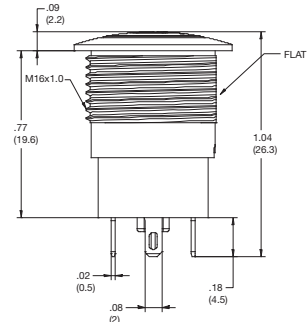
DOME



STANDARD / FLAT

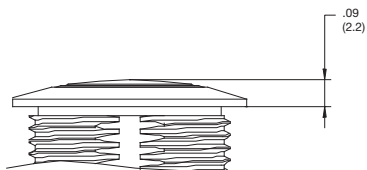


LOCK

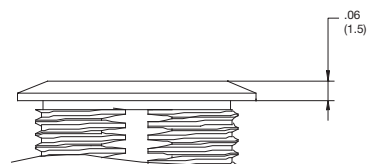


ACTUATOR STYLE

D DOME

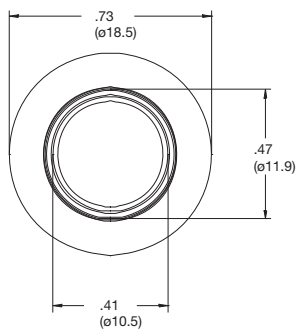


S STANDARD / FLAT

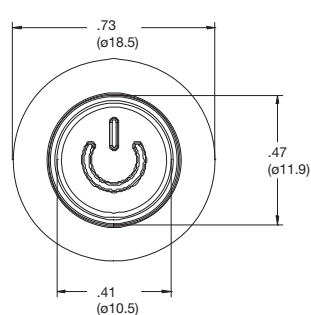


ACTUATOR INDICATOR

L1 RING



L5 RING & POWER





ATP16 Series Anti-Vandal Sealed Pushbutton Switch

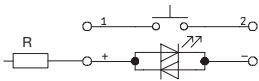
Pushbutton

A

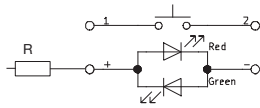
CIRCUIT

MOMENTARY

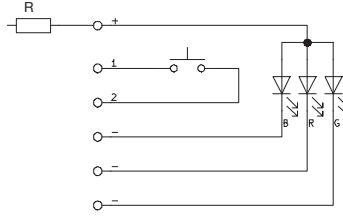
SINGLE COLOR LED



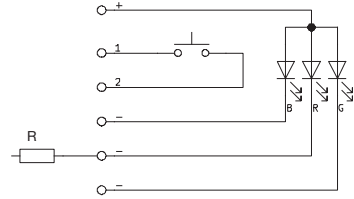
DUAL COLOR LED



RGB LED



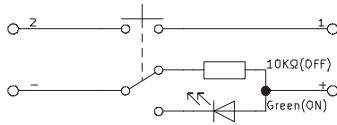
6 / 12 / 24V LED



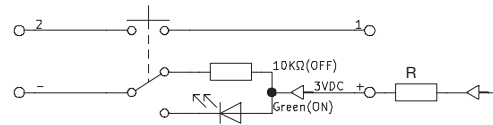
3V LED

LOCK

SINGLE COLOR LED

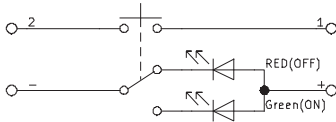


3V LED

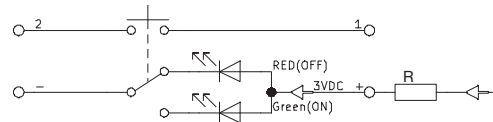


6 / 12 / 24V LED

DUAL COLOR LED



3V LED



6 / 12 / 24V LED

R: Resistor value is according to the LED voltage applied.

Resistor value (Apply LED Voltage)

LED input 3 VDC, 47 ohms (Red/Yellow/Orange LED type only)

LED input 6 VDC, 180 ohms

LED input 12 VDC, 470 ohms

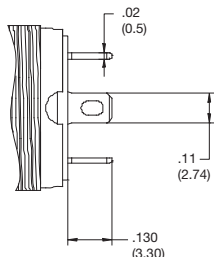
LED input 24 VDC, 1000 ohms

Ohms value of resistance tolerance: ±5%

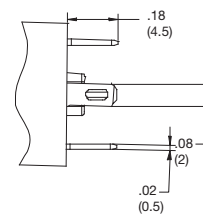
TERMINATION

04 SOLDER LUG

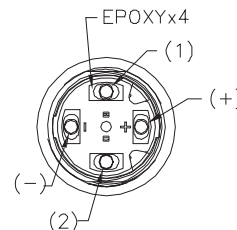
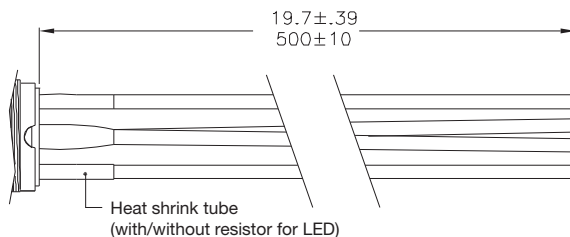
MOMENTARY



LOCK



W1 WIRE LEAD 500MM*

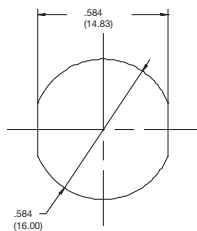


* Available upon request, please consult your sales representative for details.

PANEL CUTOUT

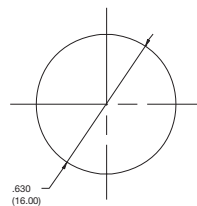
B3, B4 & M4

DOUBLE D



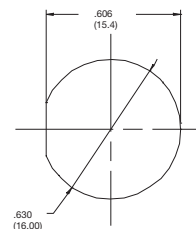
M0

ROUND



B3 & B4

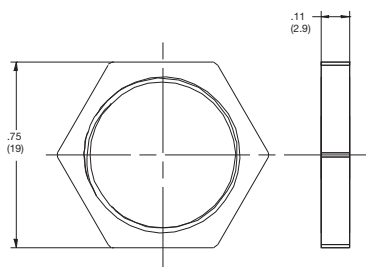
D SHAPE



HARDWARE

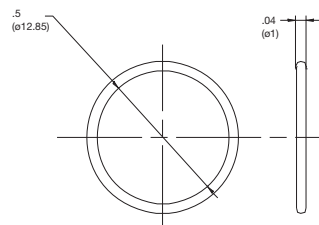
HEX NUT

Order PN: ATP16-HN





O RING

Order PN: ATP16-OR



Looking for pricing, stock, or lifecycle information?

Click below to explore more details on WIN SOURCE:

-  [View ATP16-DL5-606-B3SA-04G](#) on WIN SOURCE
-  [C&K Components](#) Information

Optimize Your Supply Chain with WIN SOURCE Solutions

-  Global Sourcing Solution
-  Obsolete Management
-  Cost Control Management
-  Shortage Management
-  Alternative Solution
-  Excess Inventory Management