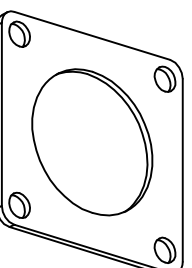
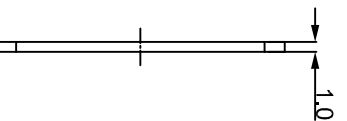
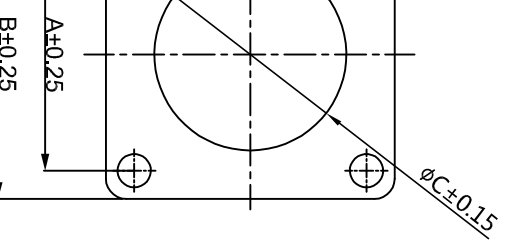




THE DATASHEET OF RTFD12B



REVISIONS					
REV	ECO	DESCRIPTION	DATE	BY	APPR
B1	-	RELEASED DRAWING	JAN-18-2014	ARROW	TOMMY
B2	-	UPDATE DRAWING	APR-18-2017	FLAN	TOMMY
B3	-	UPDATE DRAWING	MAY-19-17	Regan	Tommy
B4	-	UPDATE TOLERANCE OF "D"	JUL-25-17	Nick	Tommy
B5	-	ADD PART NO. OF #8	MAY-9-2018	Flan	Tommy



- NOTES:
- 1.MATERIAL : EPDM(BLACK). UL94 V-0
 - 2.SEALING FOR WALL MOUNTING RECEPTACLES.
 - 3.SUITABLE FOR RTG-RT0-RT0W-RTS0.

A	B	C	D
15.3	20.6	12.0	3.2
16.3	23.8	15.1	3.3
20.6	26.8	19.1	3.3
23.0	28.6	22.2	3.3
24.6	31.0	25.4	3.3
27.0	33.3	26.8	3.3
29.4	36.5	31.8	4.3
31.8	39.4	35.1	3.3
34.9	42.5	38.1	4.3

QUANTITY	PART NUMBER	DESCRIPTION	ITEM
		MATERIALS LIST	
<p>UNLESS OTHERWISE SPECIFIED</p> <p>1) All dimensions are in millimeters. 2) 1st DEC 40,30 Fractions 1/164 3) Hole reference = A</p>			
SIGNATURES		DATE	
DESIGNED BY:	Flan	MAY-9-2018	
CHECKED BY:	Tod	MAY-9-2018	
ENGINEER:			
APPROVAL:	Tommy	MAY-9-2018	
CUSTOMER:		ECO-MATE GASKET RT 360 SERIES	
PROCESS SPECIFICATIONS:		THIS DRAWING IS SUBMITTED FOR YOUR REVIEW AND APPROVAL. ALL DIMENSIONS AND TOLERANCES ARE IN MILLIMETERS UNLESS OTHERWISE SPECIFIED. SPECIFICATIONS AND PERFORMANCE DATA OF REPRODUCTION ARE IDENTICAL TO ORIGINAL DRAWING. ALL DIMENSIONS AND TOLERANCES ARE IN MILLIMETERS UNLESS OTHERWISE SPECIFIED.	
NEXT ASSY:		SIZE TYPE	REVISION
		B C-	RTFDXB B5
SCALE: NONE		DWG NO:	SHEET 1 OF 1



Amphenol

Sine Systems - www.amphenol-sine.com
 44724 Morley Drive
 Clinton Township, MI 48036

ECO-MATE GASKET
 RT 360 SERIES

Looking for pricing, stock, or lifecycle information?

Click below to explore more details on WIN SOURCE:

-  [View RTFD12B on WIN SOURCE](#)
-  [Amphenol Sine Systems Corp Information](#)

Optimize Your Supply Chain with WIN SOURCE Solutions

-  Global Sourcing Solution
-  Obsolete Management
-  Cost Control Management
-  Shortage Management
-  Alternative Solution
-  Excess Inventory Management