



THE DATASHEET OF
72913-2

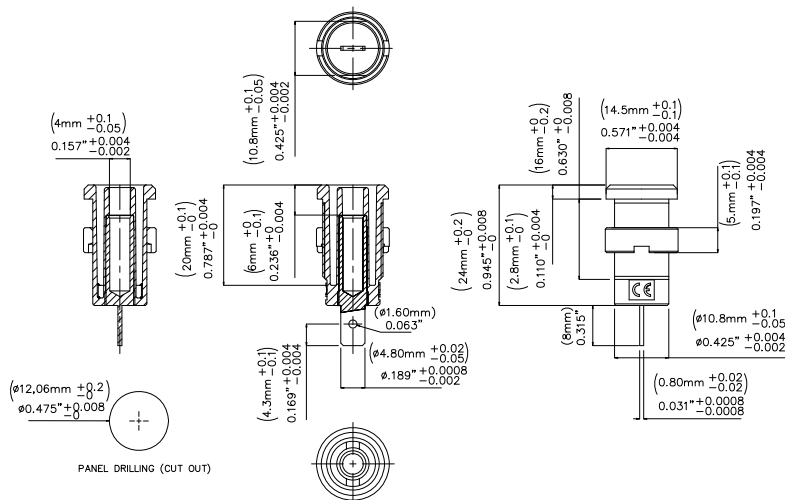


Model 72913

Panel Mt IEC61010 4mm (0.16in) Jack for Sheathed Banana Plugs



Model 72913
Panel Mount IEC61010 4mm (0.16in) Jack for
Sheathed Banana Plugs



Features

- Panel Mt. IEC61010 4mm (0.16in) Jack for Sheathed Banana Plugs.
- Solder Tab.

Materials

- Body: Polyamide
- Nut: Nickel-plated
- Solder Tab: Gold-plated Nickel Brass

Specifications

Max Current	36A
Max Voltage	1000 V CAT III
Max Resistance	Less than 5 mΩ

Ordering Information

Model: 72913-*



* = Color; Sold in packages of 10 pieces.
Available colors: Black (-0), Red (-2)

USA: Sales: 800-490-2361
Technical Support: technicalsupport@pomonatest.com
Fax: 425-446-5844
Europe: 31-(0) 40 2675 150 **International:** 425-446-5500
Where to Buy: www.pomonaelectronics.com

All dimensions are in inches. Tolerances (except noted): .xx = ±.02" (.51 mm), .xxx = ±.005" (.127 mm). All specifications are to the latest revisions. Specifications are subject to change without notice. Registered trademarks are the property of their respective companies.

Looking for pricing, stock, or lifecycle information?

Click below to explore more details on WIN SOURCE:

-  [View 72913-2 on WIN SOURCE](#)
-  [Pomona Electronics](#) Information

Optimize Your Supply Chain with WIN SOURCE Solutions

-  Global Sourcing Solution
-  Obsolete Management
-  Cost Control Management
-  Shortage Management
-  Alternative Solution
-  Excess Inventory Management