

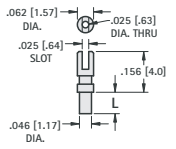


THE DATASHEET OF
1562-2



SPLIT-TYPE (FORK) TURRETS

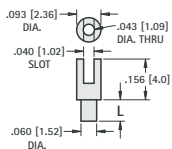
1515



Staking Tool 1515-TL

CAT. NO.	L
1515-1	.058 (1.47)
1515-2	.089 (2.26)
1515-3	.120 (3.1)
1515-4	.150 (3.8)

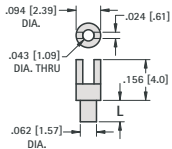
1533



Staking Tool Special Order

CAT. NO.	L
1533-2	.084 (2.13)
1533-3	.115 (2.9)
1533-4	.147 (3.7)

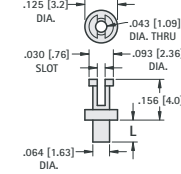
1526



Staking Tool No. TL-3

CAT. NO.	L
1526-1	.054 (1.37)
1526-2	.084 (2.13)
1526-3	.115 (2.9)
1526-4	.147 (3.7)

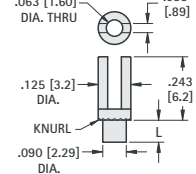
1592



Staking Tool No. TL-2

CAT. NO.	L
1592-1	.051 (1.30)
1592-2	.082 (2.08)
1592-3	.113 (2.8)
1592-4	.145 (3.6)

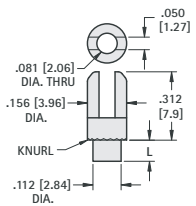
1511



Staking Tool No. TL-3

CAT. NO.	L
1511-2	.109 (2.8)
1511-3	.141 (3.5)
1511-4	.172 (4.4)

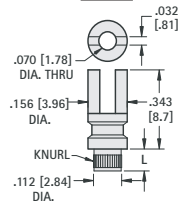
1510



Staking Tool No. TL-9

CAT. NO.	L
1510-2	.109 (2.8)
1510-3	.141 (3.5)
1510-4	.172 (4.4)

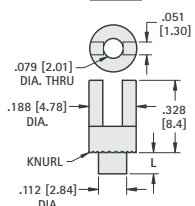
1525



Staking Tool No. TL-9

CAT. NO.	L
1525-2	.109 (2.8)
1525-3	.141 (3.5)
1525-4	.172 (4.4)

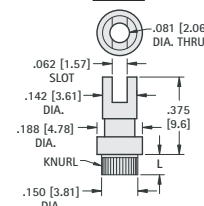
1507



Staking Tool No. TL-9

CAT. NO.	L
1507-2	.109 (2.8)
1507-3	.141 (3.5)
1507-4	.172 (4.4)

1557



Staking Tool 1557-TL

CAT. NO.	L
1557-2	.109 (2.8)
1557-3	.141 (3.5)
1557-4	.172 (4.4)

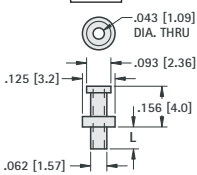
SPECIAL TURRET TERMINALS

Custom turret terminals can be machined to your exact specifications. Standard and special terminals can be staked onto special boards. Please email/fax your design to our Engineering Department.

TURRET TERMINALS

TUBULAR TURRETS

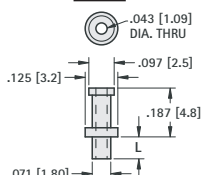
1562



Staking Tool No. TL-2

CAT. NO.	L
1562-1	.054 (1.37)
1562-2	.084 (2.13)
1562-3	.115 (2.9)
1562-4	.147 (3.7)

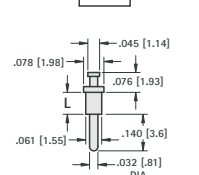
1559



Staking Tool No. TL-2

CAT. NO.	L
1559-1	.062 (1.57)
1559-2	.094 (2.39)
1559-3	.125 (3.2)
1559-4	.156 (3.9)

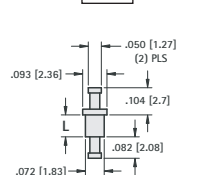
1633



Staking Tool 1633-TL

CAT. NO.	L
1633-1	.051 (1.30)
1633-2	.082 (2.08)
1633-3	.113 (2.8)
1633-4	.145 (3.6)

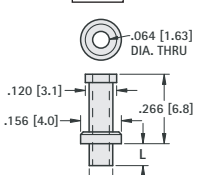
1574



Staking Tool No. TL-4

CAT. NO.	L
1574-1	.051 (1.30)
1574-2	.082 (2.08)
1574-3	.113 (2.8)
1574-4	.145 (3.6)

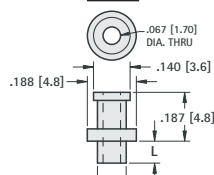
1540



Staking Tool No. TL-5

CAT. NO.	L
1540-2	.107 (2.7)
1540-3	.141 (3.5)
1540-4	.172 (4.4)

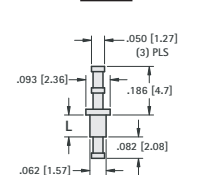
1519



Staking Tool No. TL-8

CAT. NO.	L
1519-1	.078 (1.98)
1519-2	.109 (2.8)
1519-3	.141 (3.5)
1519-4	.172 (4.4)

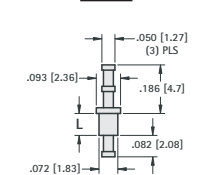
1613



Staking Tool No. TL-4

CAT. NO.	L
1613-1	.051 (1.30)
1613-2	.082 (2.08)
1613-3	.113 (2.8)
1613-4	.145 (3.6)

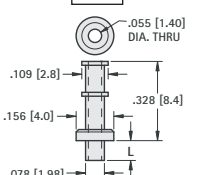
1575



Staking Tool No. TL-4

CAT. NO.	L
1575-1	.051 (1.30)
1575-2	.082 (2.08)
1575-3	.113 (2.8)
1575-4	.145 (3.6)

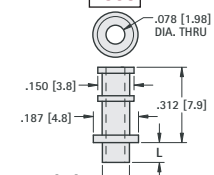
1582



Staking Tool No. TL-5

CAT. NO.	L
1582-1	.075 (1.91)
1582-2	.105 (2.7)
1582-3	.135 (3.4)
1582-4	.165 (4.2)

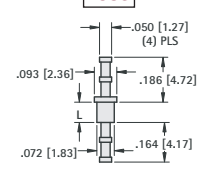
1509



Staking Tool No. TL-8

CAT. NO.	L
1509-1	.078 (1.98)
1509-2	.109 (2.8)
1509-3	.141 (3.5)
1509-4	.172 (4.4)

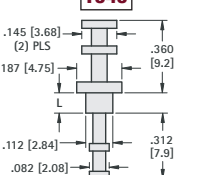
1583



Staking Tool No. TL-4

CAT. NO.	L
1583-1	.051 (1.30)
1583-2	.082 (2.08)
1583-3	.113 (2.8)
1583-4	.145 (3.6)

1545





Staking Tool No. TL-12

CAT. NO.	L
1545-2	.105 (2.7)
1545-3	.135 (3.4)
1545-4	.165 (4.2)

Looking for pricing, stock, or lifecycle information?

Click below to explore more details on WIN SOURCE:

-  [View 1562-2 on WIN SOURCE](#)
-  [Keystone Electronics Information](#)

Optimize Your Supply Chain with WIN SOURCE Solutions

-  Global Sourcing Solution
-  Obsolete Management
-  Cost Control Management
-  Shortage Management
-  Alternative Solution
-  Excess Inventory Management