



**THE DATASHEET OF
PN21LENA03QE**



PN Series Alternate & Momentary Action Pushbutton Switches

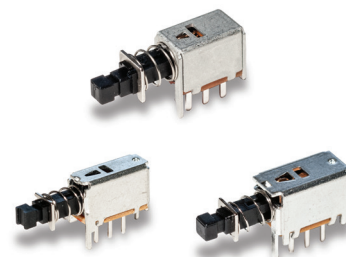


Features/Benefits

- Momentary or locking action
- Different actuation forces for customized feel
- Low cost, reliable contact design
- Single and double pole options
- RoHS compliant

Typical Applications

- Computers and peripherals
- Instrumentation and measurement equipment
- Non-power, on-off switch applications



Specifications

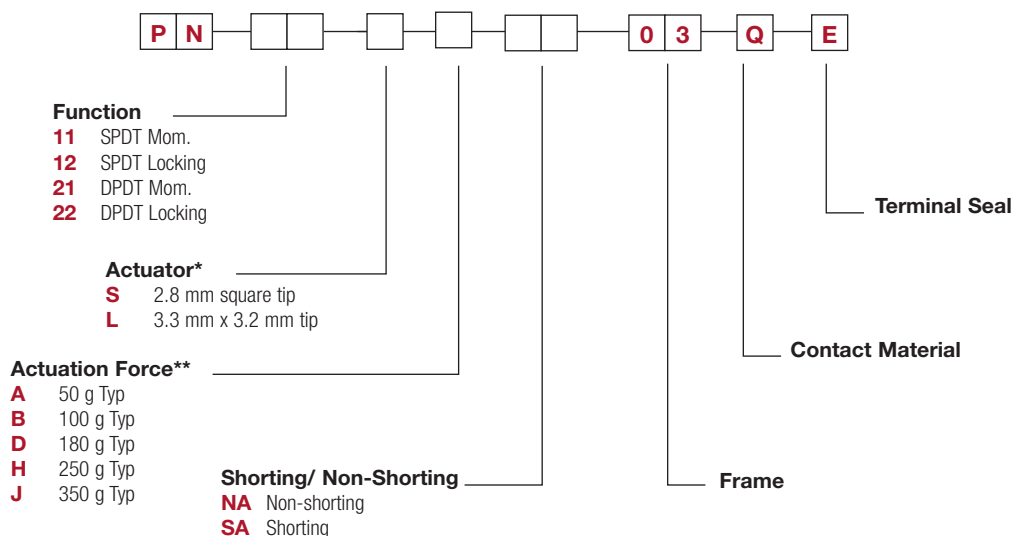
CONTACT RATING: 0.2 AMP @ 30 V DC max.
 ELECTRICAL LIFE: 10,000 make-and-break cycles at full load.
 MECHANICAL LIFE: 10,000 on/off cycles.
 CONTACT RESISTANCE: 30 mΩ max. initial
 INSULATION RESISTANCE: 100 MΩ min.
 DIELECTRIC STRENGTH: 500 V AC min.
 OPERATING/STORAGE TEMPERATURES: -10°C to 60°C.
 PACKAGING: Switches are supplied in anti-static trays.

Materials

FRAME: Tin plated steel.
 ACTUATOR: PA 66 black.
 BASE: Phenolic resin.
 TERMINALS: Silver plated brass.
 MOVABLE CONTACTS: Silver plated phosphor bronze.
 RETURN SPRING: SWC
 DETENT SPRING: Phosphor bronze.
 DETENT SPRING PLATE: Phosphor bronze.
 RETURN SPRING RETAINER RING: Nickel plated steel.
 TERMINAL SEAL: Epoxy.

Build-A-Switch

To order, simply select desired option from each category and place in the appropriate box. For additional options not shown in catalog, consult Customer Service Center.



* "L" actuator is available for PN 21 & PN 22 options only

** Actuation Force "A" is available with PN11 on "S" actuator only
 PN 11 & PN 21 are available with Actuation Force "B", "D", "H", "J"
 PN 12 & PN 22 are available with Actuation Force "D", "H", "J"

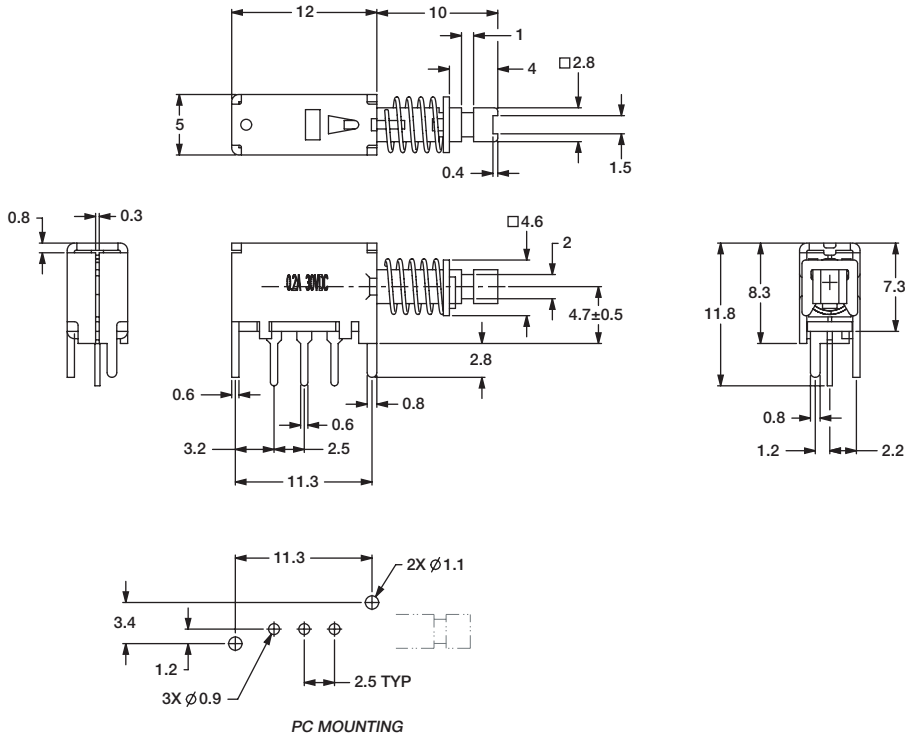


PN Series Alternate & Momentary Action Pushbutton Switches

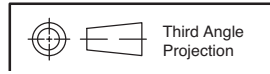
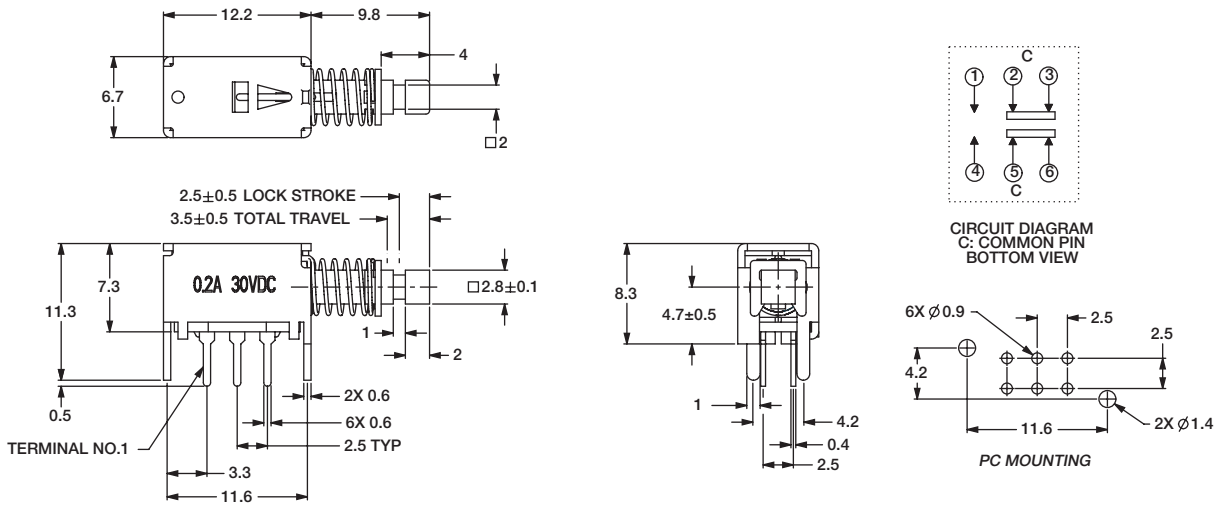
Pushbutton

A

PN 11 SPDT Mom.
PN 12 SPDT Locking



PN 21 DPDT Mom. with "S" Actuator
PN 22 DPDT Locking with "S" Actuator



Third Angle Projection
Specifications and dimensions subject to change



23 Jun 22

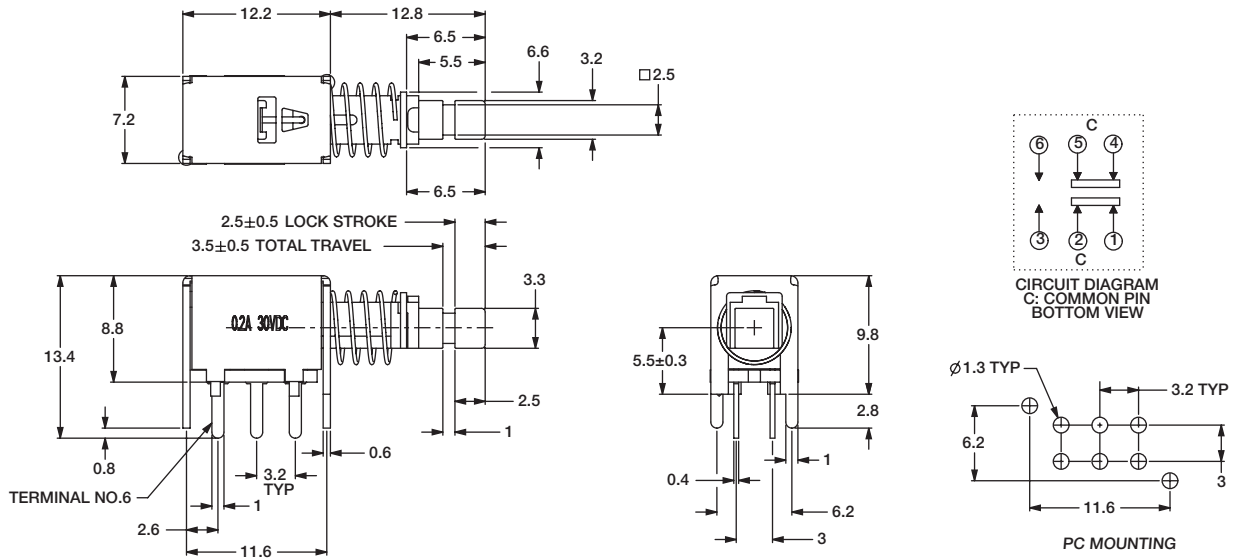
PN Series Alternate & Momentary Action Pushbutton Switches



A

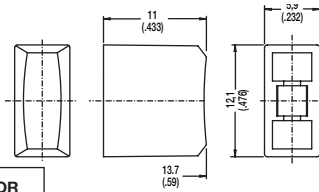
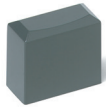
Pushbutton

PN 21 DPDT Mom. with "L" Actuator
PN 22 DPDT Locking with "L" Actuator

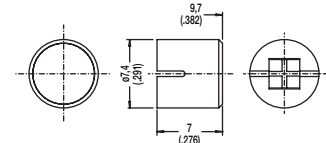


BUTTONS MUST BE ORDERED SEPARATELY. SHIPPED IN BULK.

PE



PV

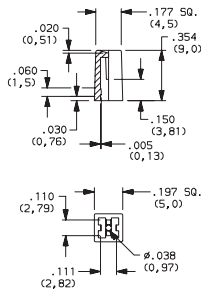
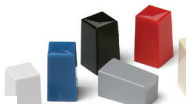


OPTION CODE	COLOR
RD	Red
GY	Gray
BK	Black
WH	White

PE and PV buttons fit "L" actuators

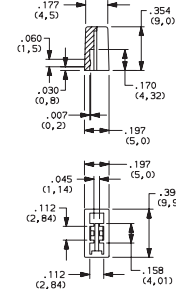
Indexed

- G001A** Black
- G001G** Gray
- G001I** Ivory
- G001R** Red



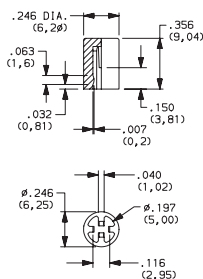
Rectangular

- G002A** Black
- G002G** Gray
- G002I** Ivory
- G002R** Red



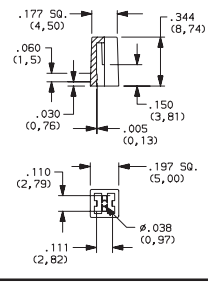
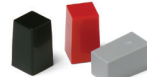
Round

- G003A** Black
- G003G** Gray
- G003I** Ivory
- G003R** Red

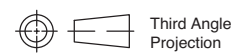


Square

- G004A** Black
- G004G** Gray
- G004I** Ivory
- G004R** Red



G001, G002, G003 and G004 buttons fit "S" actuators



23 Jun 22

Dimensions are shown: Inches (mm)
 Specifications and dimensions subject to change

Looking for pricing, stock, or lifecycle information?

Click below to explore more details on WIN SOURCE:

- ⊖ [View PN21LENA03QE](#) on WIN SOURCE
- ⊖ [C&K Components](#) Information

Optimize Your Supply Chain with WIN SOURCE Solutions

- ✓ Global Sourcing Solution
- ✓ Obsolete Management
- ✓ Cost Control Management
- ✓ Shortage Management
- ✓ Alternative Solution
- ✓ Excess Inventory Management