



THE DATASHEET OF
SS-60300-010





Stewart Connector Focus Catalog

Modular Jacks

ARJ45® Category 7a

Modular Plugs

MRJ21 Cables & Patch Panels

RJ point five Connector

Harmonica/Stacked Jacks

Company Profile

A NASDAQ company (BELFA & BELFB), Bel was founded in 1949 and is headquartered in Jersey City, New Jersey. Bel helps make global connectivity a reality by manufacturing electronic components for the computer, networking and telecommunication industries. Partnered with the leaders in these markets, we develop new products for emerging technologies that enable high speed communication. Our expanding portfolio includes a range of complementary products from circuit protection devices to power conversion modules, transformers and connector modules, to integrated line interface products.

For over sixty years, we've used our superior, high-volume manufacturing techniques to deliver quality products to the global marketplace. Bel employs more than 10,000 people around the world with facilities in North America, Asia and Europe.

Stewart Connector portfolio of products include one of the broadest ranges of Ethernet connectivity. Our interconnect products includes passive jacks, plugs and cable assemblies that provide connectivity in networking equipment. Modular plugs and cable assemblies are used within the structured cabling system, known as premise wiring. All connector products are designed to meet current performance standards including Category 6a regulations for Gigabit Ethernet and 10Gigabit Ethernet applications. Our MagJack® products include a comprehensive line of single and multi-port RJ-45 connectors with integrated magnetic for 10/100/1000Base-T applications.

RoHS Update

Bel is committed to the elimination of lead and other banned substances from our products. Significant effort has been directed towards compliance with European Directive 2002/95/EC and all Bel Power products in this catalog now conform to this directive although select products designed specifically for network equipment and/or file server applications make use of the exemption for lead in solder for electrical terminations. Consult data sheets for specific compliance information. RoHS compliant products are marked with the logo shown here. In addition, Bel also monitors other legislative requirements with potential impact to the use of banned substances in electronic products. We continue to pursue the use of alternative (greener) manufacturing methods and materials for our products.



TABLE OF CONTENTS

Single Port Right Angle Modular Jacks 4

SS-60000
SS-60300
SS-64100
SS-60800
SS-70000
SS-70100

Single Port Vertical / 45 Degree Modular Jacks 5

SS-60000
SS-60300
SS-65000
SS-71100
SS-71800

ARJ45® Category 7a 6

CA76
CA77
SS-77100

MRJ21 Cables Assemblies 7

MRJXXXX

MRJ21 48 Position Patch Panels 8

ASY2100

Modular Plugs 9

940-SP
SS-37000
SS-37200
SS-39100
SS-39200

EPP-918A Protective Sealant 10

SS60000
SS64800
SS65100
SS66800
SS71800

RJ point five Cable Assemblies and Connectors 11

RJP500

Harmonica – Ganged Jacks 12

SS-66400
SS66800
SS71800

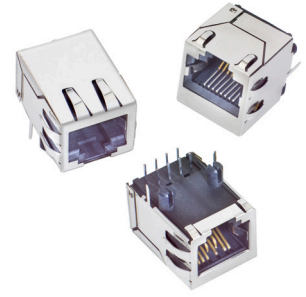
Stacked Jacks 13

SS-73100
SS-73800
SS-76800

Website Overview 14

Stewart Connector Landing Page
Stewart Connector Product Page

MODULAR JACKS



Specifications / Design Features

- Housing Material: UL 94V-0 rated glass -filled thermoplastic
- Contact Material: Copper Alloy
- Contact Plating: Selective gold plating in the contact interface
- Current Rating: 1.5 A (maximum) @ 25° C
- Voltage Rating: 150 VAC (maximum)

Description

Stewart Connector single port modular jacks are designed to meet the demanding requirements of high-performance communication environments including the increasing harsh environments that mobile electronics must operate in. Available in a wide variety of height configurations, there is a Stewart single port right angle, vertical, angled jack that will provide the versatility and reliable solution for your networking or mobile applications. All of the Stewart single port modular jacks can be equipped with EPP-918A contact dressing to increase the durability of the contacts to withstand heavy insertions and extractions of the mating plugs and provide increased protection in harsh environments.

How to Order Single Port Right Angle Modular Jacks

Part Number	Performance	Contacts	Shield	Shield Type	Orientation
SS-60300-010	10G	8	Yes	PG4	Horizontal (90)
SS-60300-002	CAT6a	8	Yes	PG4	Horizontal (90)
SS-60300-004	CAT6a	8	Yes	NF	Horizontal (90)
SS-60000-009	CAT6	8	Yes	NF	Horizontal (90)
SS-60000-010	CAT6	8	No		Horizontal (90)
SS-64100-082	Standard	10	Yes	NF	Horizontal (90)
SS-641010-NF-A115	Standard	10	No		Horizontal (90)
SS-6488-NF	Standard	8	No		Horizontal (90)
SS-6488S-A-NF	Standard	8	Yes	NF	Horizontal (90)
SS-700810-NF	Standard	8	No		Horizontal (90)
SS70100-041F	Standard	8	Yes	PG4	Horizontal (90)

Custom designs are available on request. Email techhelp@belf.com to submit your specific application needs. Data sheets with electrical and mechanical specifications are available at stewartconnector.com

Available in a wide variety of height configurations, there is a Stewart single port right angle, vertical, angled jack that will provide the versatility and reliable solution for your networking or mobile application.



MODULAR JACKS



Specifications / Design Features

- Housing Material: UL 94V-0 rated glass -filled thermoplastic
- Contact Material: Copper Alloy
- Contact Plating: Selective gold plating in the contact interface
- Current Rating: 1.5 A (maximum) @ 25° C
- Voltage Rating: 150 VAC (maximum)

Description

Stewart Connector single port modular jacks are designed to meet the demanding requirements of high-performance communication environments including the increasing harsh environments that mobile electronics must operate in. Available in a wide variety of height configurations, there is a Stewart single port right angle, vertical, angled jack that will provide the versatility and reliable solution for your networking or mobile applications. All of the Stewart single port modular jacks can be equipped with EPP-918A contact dressing to increase the durability of the contacts to withstand heavy insertions and extractions of the mating plugs and provide increased protection in harsh environments.

How to Order Single Port Vertical / 45 Degree Modular Jacks

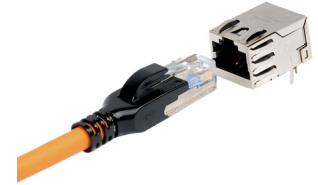
Part Number	Performance	Contacts	Shield	Shield Type	Orientation
SS-60300-014	CAT6a	8	Yes	PG4	Vertical (180)
SS-60300-016	CAT6a	8	Yes	NF	Vertical (180)
SS-60300-023	CAT6a	8	Yes	PG4	Angle (45)
SS-60000-007	CAT6	8	No		Vertical (180)
SS-60000-008	CAT6	8	Yes	NF	Vertical (180)
SS-60000-014	CAT6	8	No		Angle (45)
SS-71100-001	CAT5e	8	Yes	NF	Angle (45)
SS71800-027F	CAT5e	8	Yes	NF	Vertical (180)
SS-7188V-A-NF	CAT5e	8	No		Vertical (180)
SS-650810-A-NF	Standard	8	No		Vertical (180)
SS-650810S-A-NF-50	Standard	8	Yes	NF	Vertical (180)

Custom designs are available on request. Email techhelp@belf.com to submit your specific application needs. Data sheets with electrical and mechanical specifications are available at stewartconnector.com

Available in a wide variety of height configurations, there is a Stewart single port right angle, vertical, angled jack that will provide the versatility and reliable solution for your networking or mobile application.

+1 717.235.7512
techhelp@belf.com
stewartconnector.com

ARJ45® CAT 7A



Specifications / Design Features

- Cable and jack connector system designed for freq. up to & beyond 1,000 MHz
- Interface compatible with Nexans GG45 Connector System
- Patented plug design allows for port density equivalent to standard RJ45 connectors
- Plug design includes integral slim line strain relief with built in latch protection
- Uses data pair isolation technology to achieve high frequency performance
- Look and feel of an RJ45 connector but with beyond 10GBase-T performance capabilities

Description

The ARJ45® connector system is Stewart Connector's new family of products for Category 7 and Category 7a premise wiring systems deployed in 10Gigabit Ethernet and higher speed data transmission environments. This connector family consists of a cable-mounted plug and a single-port, PCB-mounted jack designed to meet Category 7a performance standards up to 1000 MHz as defined by the IEC60603-7-71. Additionally, the ARJ45 connector system can be used as a high speed replacement for closed loop applications currently using less economical connector types.

Stewart Connector's ARJ45 connector systems provide a competitive advantage in that they are built on the proven reliability of standard RJ45 interface mechanics which have been enhanced to support increased Category 7a data speeds. In addition, the ARJ45 connectors are interface-compatible with the Nexans' GG45 connector system.

How to Order ARJ45® CAT7a Cables

Part Number	Performance	Length	Conn End A	Conn End B	Cable Rating
CA77-001M0-2	CAT7a	1 Meter	ARJ45	ARJ45	LSZH
CA77-002M0-2	CAT7a	2 Meter	ARJ45	ARJ45	LSZH
CA77-003M0-2	CAT7a	3 Meter	ARJ45	ARJ45	LSZH
CA77-005M0-2	CAT7a	5 Meter	ARJ45	ARJ45	LSZH
CA76-001M0-2	CAT6a	1 Meter	ARJ45	RJ-45	LSZH
CA76-002M0-2	CAT6a	2 Meter	ARJ45	RJ-45	LSZH
CA76-003M0-2	CAT6a	3 meter	ARJ45	RJ-45	LSZH
CA76-005M0-2	CAT6a	5 Meter	ARJ45	RJ-45	LSZH

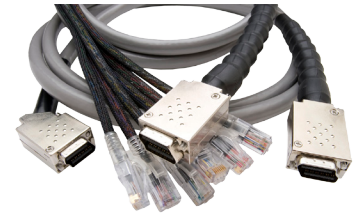
How to Order ARJ45® CAT7a Connectors

Part Number	Performance	Contacts	Shield Type	Orientation	Port Opening
SS-77100-004	CAT7a	8	PG4	Horizontal (90)	Tab Up



The ARJ45® connector system is Stewart Connector's new family of products for Category 7 and Category 7a premise wiring systems deployed in 10Gigabit Ethernet and higher speed data transmission environments.

MRJ21 CABLES



Specifications / Design Features

- Dense, Telco-style, double-bladed design allows 1.5 to 3 times the port density of 2x6 modular RJ45 stacked jacks
- Three times the port density of RJ21 connectors
- Jackscrews for positive latching and secure cable retention
- Fully shielded to reduce EMI emissions
- Robust receptacle board lock design for superior PCB strain relief
- Cable exit options include 180 degree straight and 45 degrees left or right

Description

Stewart's MRJ21 cable assembly products are designed to support increased patch panel density in telecom and premise wiring applications. This modular cabling platform supports network applications such as gigabit Ethernet, Voice over Internet Protocol (VoIP), and Power over Ethernet (PoE). Cable connection options include left and right 45 degree exits as well as a 180 degree straight cable exit to facilitate various routing schemes to component racks.

Designed with a die cast backshell for shielding applications, Stewart's MRJ21 cable assemblies are durability tested to 500 cycles to insure unsurpassed quality and performance. Robust jackscrews provide a secure cable connection while the sturdy boardlock design allows superior PCB strain relief.

Technical Support

Stewart Connector's application and design engineers are ready to help with your next Ethernet connectivity solution. Our expertise designing and manufacturing both passive and active connectors as well as premise wiring solutions ensures a prompt solution to your unique requirements and application needs.

How to Order MRJ21 Cable Assemblies

Part Number*	Description	Cable Type	Shielding
MRJxxxxAF-A	6 RJ45 Plugs to MRJ21 Angled	CMR	Unshielded
MRJxxxxDD-A	MRJ21 Straight to MRJ21 Straight	CMR	Unshielded
MRJxxxxAD-A	6 RJ45 Plugs to MRJ21 Straight	CMR	Unshielded
MRJxxxxDF-A	MRJ21 Straight to MRJ21 Angled	CMR	Unshielded
MRJxxxxAF-C	6 RJ45 Plugs to MRJ21 Angled	CMP	Unshielded
MRJxxxxDD-C	MRJ21 Straight to MRJ21 Straight	CMP	Unshielded
MRJxxxxAD-C	6 RJ45 Plugs to MRJ21 Straight	CMP	Unshielded
MRJxxxxDF-C	MRJ21 Straight to MRJ21 Angled	CMP	Unshielded

* xxxx denotes desired cable length from 0.5 to 100.0 meters, in 0.5 meter increments. Typical part numbers are listed. For configurations not shown here, please consult factory.

Custom designs are available on request. Email techhelp@belf.com to submit your specific application needs. Data sheets with electrical and mechanical specifications are available at stewartconnector.com

MRJ21 is a trademark owned by TE Connectivity used here under license. This modular cabling platform supports network applications such as gigabit Ethernet, Voice over Internet Protocol (VoIP), and Power over Ethernet (PoE).

+1 717.235.7512
techhelp@belf.com
stewartconnector.com

MRJ21 PATCH PANELS



Specifications / Design Features

- Provides a transition point from MRJ21 to RJ45 connectivity
- Versions available to support Gigabit Ethernet
- Versions available to support 10/100 Base-T
- Accommodates shielded and unshielded cabling solutions
- 19" rack mounted
- 1 RU (Rack Unit) High
- 48 port
- UL listed

Description

The MRJ21 Patch Panel is a high density cabling device which transitions MRJ21 connectivity into traditional RJ45 ports. The demand for this product arises out of the fact that the MRJ21 connector is a high density 24 pair connector used on new networking and telecommunications equipment. Very often, this new equipment must interface with existing infrastructure which consists of RJ45 connectivity, and the MRJ21 patch panel allows for an organized transition point for this interface. The product can also be used in conjunction with MRJ21 cable assemblies to create high density, low profile, pre-terminated Category 5e permanent links. The product is available in 48 port versions for Gigabit Ethernet and 10/100 Base-T which fit into a standard 19" rack.

How to Order MRJ21 48 Position Patch Panels

Part Number	Performance	Shield	Ports	Package	Profile
ASY21000-006	10/100/1000 BASE-T	Yes	48	19 inch	1 RU
ASY21000-005	10/100 BASE-T	Yes	48	19 inch	1 RU

Custom designs are available on request. Email techhelp@belf.com to submit your specific application needs. Data sheets with electrical and mechanical specifications are available at stewartconnector.com

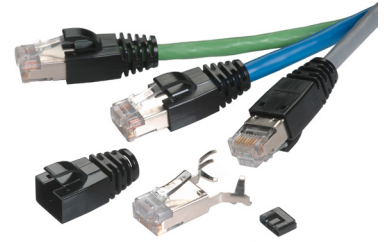
Technical Support

Stewart Connector's application and design engineers are ready to help with your next Ethernet connectivity solution. Our expertise designing and manufacturing both passive and active connectors as well as premise wiring solutions ensures a prompt solution to your unique requirements and application needs.

MRJ21 is a trademark owned by TE Connectivity used here under license. The MRJ21 Patch Panel is a high density cabling device which transitions MRJ21 connectivity into traditional RJ45 ports. The demand for this product arises out of the fact that the MRJ21 connector is a high density 24 pair connector used on new data center applications.



MODULAR PLUGS



Specifications / Design Features

- Electro-polished contact designs to accommodate solid and stranded conductors
- Performance levels from CAT3 thru CAT6a
- Wire management systems to improve plug assembly and performance
- Available in 4 through 10 position selectively loaded contact configurations
- Numerous keying options available on select models
- Strain relief boots with latch protection available on certain configurations

Description

With an industry leading array of part number configurations available, Stewart Connector has an RJ45 modular plug available for your application. The product family is led by next generation shielded and unshielded CAT6a plugs which have wire management systems to provide reliable patch cord assemblies required in 10GBase-T applications. If you need port density, Stewart Connector offers mod plugs with slim line boots and latch protection to work in today's highest density Gigabit Ethernet devices. In addition, Stewart offers numerous modular plugs with keying for use in proprietary communications systems where plug to jack mate-ability needs to be controlled. Designed to exceed appropriate TIA-568 and IEC 60603-7 mechanical and electrical performance specifications you can count on Stewart Connector's plug to keep your network up and running.

How to Order Modular Plugs

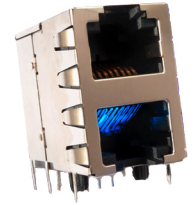
Part Number	Performance	Contacts	Shield	Conductor Size	Cable Type
SS-39100-030	CAT6a	8	No	.033"-.037" (0.84mm-0.94mm)	.235" max (5.97mm max)
SS-39200-020	CAT6a	8	Yes	.036"-.042" (0.91mm-1.07mm)	.220"-.240" (5.59mm-6.10mm)
SS-39100-008	CAT6	8	No	.036"-.042" (0.91mm-1.07mm)	.220"-.230" (5.59mm-5.84mm)
SS-39100-021	CAT6	8	No	.036"-.042" (0.91mm-1.07mm)	.235" max (5.97mm max)
SS-39200-011	CAT6	8	Yes	.036"-.042" (0.91mm-1.07mm)	.232"-.248" (5.89mm-6.30mm)
SS-39200-019	CAT6	8	Yes	.036"-.042" (0.91mm-1.07mm)	.270"-.295" (6.86mm-7.49mm)
SS-37000-007	CAT5e	8	No	.036"-.042" (0.91mm-1.07mm)	.235" max (5.97mm max)
SS-37200-028	CAT5e	8	Yes	.036"-.042" (0.91mm-1.07mm)	.235" max (5.97mm max)
940-SP-301010R	Standard	10	No	.032"-.038" (0.81mm-0.97mm)	.235" max (5.97mm max)
940-SP-3088R-A133	Standard	8	No	.034"-.040" (0.86mm-1.02mm)	.235" max (5.97mm max)
940-SP-360808-A161	Standard	8	Yes	.032"-.038" (0.81mm-0.97mm)	.180"-.230" (4.57mm-5.84mm)

Custom designs are available on request. Email techhelp@belf.com to submit your specific application needs. Data sheets with electrical and mechanical specifications are available at stewartconnector.com

The product family is led by next generation shielded and unshielded CAT6a plugs which have wire management systems to provide reliable patch cord assemblies required in 10GBase-T applications.

+1 717.235.7512
techhelp@belf.com
stewartconnector.com

PROTECTIVE SEALANT



Specifications / Design Features

- Improves durability and reliability for RJ11 and RJ45 modular jacks
- Helps prevent corrosion from harsh environmental conditions
- Withstands high temperature soldering (in excess of 260° C for 10 seconds)
- Low Level Contact Resistance testing to 10K cycles with no measurable change to gold plated contacts
- Contains a UV tracer for visible inspection of the EPP-918A coating on the contacts
- EPP-918A contact protectant can be used with any Stewart jack to increase durability and reliability

Description

Stewart's EPP-918A protectant improves product reliability by providing an unprecedented level of defense against harsh environmental conditions. In addition to providing superior moisture, humidity, and corrosion resistance, EPP-918A also shields against wear due to repetitive mating/un-mating forces.

By guarding electronic connectors with this contact dressing, EPP-918A prolongs the life of contacts within RJ11 and RJ45 jacks exposed to extreme environmental conditions. Once applied (during our manufacturing process), EPP-918A will not migrate – it adheres to the contacts instantly and remains intact without the need for additional tape, mechanical barriers, or cure time. This characteristic eliminates the added expense that other barrier methods entail.

EPP-918A is useful in any application, static or mobile, involving harsh environmental conditions and /or a very high number of mating cycles. Stewart's EPP-918A environmental protectant is RoHS compliant and can be used with virtually any Stewart connector product to increase durability and reliability.

How to Order Connectors with Protective Sealant

Part Number	Performance	Contacts	Shield	Shield Type	Ports	Orientation
SS60000-009G	CAT6	8	Yes	NF	1	Horizontal (90)
SS71800-019G	CAT5e	8	Yes	PG4	1	Horizontal (90)
SS71800-104G	CAT5e	8	Yes	PG4	1	Horizontal (90)
SS64800-008G	Standard	8	No		1	Horizontal (90)
SS64800-057G	Standard	8	Yes	PG4	1	Horizontal (90)
SS65100-024G	Standard	8	Yes	NF	1	Vertical (180)
SS66800-036G	Standard	8	No		8	Horizontal (90)

Custom designs are available on request. Email techhelp@belf.com to submit your specific application needs. Data sheets with electrical and mechanical specifications are available at stewartconnector.com

EPP-918A protectant improves product reliability by providing an unprecedented level of defense against harsh environmental conditions.



RJ POINT FIVE CONNECTORS



Specifications / Design Features

- Designed for up to CAT5e applications, this system provides nearly double the port density when compared to a standard RJ45 Ethernet link
- Plug release pull tab readily accessible for ease of removal from anywhere on the receptacle
- LED light travels through the plug via fiber optic light pipes
- Contains an integrated cable strain relief and plug shield
- Modular receptacle design allows for quick and easy deployment of product extensions

Description

Stewart Connector's RJ point five connector system, the next generation Ethernet link, provides nearly double the port density when compared to standard RJ45 connector solutions. Ideal for OEM's seeking to increase density while also reducing the cost-per-port price point. The RJ point five cable system provides the convenience of a single connector per channel for maximum port flexibility and efficiency. This connector system currently supports Gigabit Ethernet speeds for CAT5e cabling and coupled with Bel's new single port PCB connector designs support PoE Plus and provide a migration path to 10GBase-T over CAT6a applications. Especially useful in mobile, handheld, and remote application such as small cells (femto cells).

How to Order RJ point five Cable Assemblies

Part Number	Performance	Shield	Conn End A	Conn End B	Wiring Pattern	Length
RJP50030AA-A	CAT5e	No	RJ <i>point five</i> Plug	RJ <i>point five</i> Plug	Standard	3.0 meters
RJP50030AB-A	CAT5e	No	RJ <i>point five</i> Plug	RJ-45 Plug, Unshielded	Standard	3.0 meters
RJP50030AX-A	CAT5e	No	RJ <i>point five</i> Plug	RJ <i>point five</i> Plug	Cross-Over	3.0 meters
RJP50050AA-A	CAT5e	No	RJ <i>point five</i> Plug	RJ <i>point five</i> Plug	Standard	5.0 meters
RJP50050AB-A	CAT5e	No	RJ <i>point five</i> Plug	RJ-45 Plug, Unshielded	Standard	5.0 meters
RJP50050AX-A	CAT5e	No	RJ <i>point five</i> Plug	RJ <i>point five</i> Plug	Cross-Over	5.0 meters
RJP50075AA-A	CAT5e	No	RJ <i>point five</i> Plug	RJ <i>point five</i> Plug	Standard	7.5 meters
RJP50075AB-A	CAT5e	No	RJ <i>point five</i> Plug	RJ-45 Plug, Unshielded	Standard	7.5 meters
RJP50075AX-A	CAT5e	No	RJ <i>point five</i> Plug	RJ <i>point five</i> Plug	Cross-Over	7.5 meters

How to Order RJ point five Connectors

Part Number	Performance	Shield	Shield Type
RJP5-10-0001	CAT5e	No	
RJP5-10-0002	CAT5e	Yes	NF
RJP5-10-0003	CAT5e	Yes	PG
RJP5-10-0004	CAT5e	Yes	PG4

How to Order RJ *point five* Loop Backs

Part Number	Performance	Shield
RJP5-16-0001	CAT5e	No

RJ point five is a trademark owned by TE Connectivity used here under license. RJ point five connector System, the next generation Ethernet link, provides nearly double the port density when compared to standard RJ45 connector solutions.

+1 717.235.7512
 techhelp@belf.com
stewartconnector.com

HARMONICA JACKS



Specifications / Design Features

- CAT3 to CAT5e connectors are available in shielded and unshielded configurations to support Gigabit networks
- Provides 100 g of Contact Normal Force (minimum)
- Jack dimensions meet FCC requirements when plated with 50 microinches of gold
- Jacks are UL approved and DUXR2 and DUXR8 certified and RoHS compliant
- Available in high temperature plastics to meet new manufacturing requirements

Description

Stewart Connector offers CAT3 and CAT5e Harmonica Jacks. Our space-saving modular Harmonica jacks offer the most features for the maximum reliability and performance you need for today's integrated data systems from the central office all the way through to your mobile applications. Our enhanced shielding provides optimum protection against EMI, and our unique panel tabs provide a high normal force for superior shielding effectiveness. The longer springs allow repeated insertions /withdrawals from a panel, and prevent "fish hooking" on the panel during insertion. All of the Stewart Harmonica style modular jacks can be equipped with EPP-918A contact dressing to increase the durability of the contacts to withstand heavy insertions and extractions of the mating plugs and provide increased protection in harsh environments.

How to Order Harmonica Jacks

Part Number	Performance	Shield	Shield Type	Ports	Port Opening
SS71800-035F	CAT5e	Yes	PG4	2	Tab Down
SS71800-041F	CAT5e	Yes	PG4	4	Tab Down
SS71800-044F	CAT5e	Yes	PG4	4	Tab Down
SS-718804-NF	CAT5e	No		4	Tab Down
SS-718804S-A-PG4-BA	CAT5e	Yes	PG4	4	Tab Down
SS71800-095F	CAT5e	Yes	PG4	8	Tab Down
SS-664602S-A-PG4-AC-50	Standard	Yes	PG4	2	Tab Down
SS66800-014F	Standard	Yes	NF	3	Tab Down
SS-664604S-A-PG4-AC-50	Standard	Yes	PG4	4	Tab Down
SS-668804S-A-NF	Standard	Yes	NF	4	Tab Down
SS-668806-NF	Standard	No		6	Tab Down
SS-668806S-A-PG4-AC	Standard	Yes	PG4	6	Tab Down
SS-668808-NF	Standard	No		8	Tab Down

Custom designs are available on request. Email techhelp@belf.com to submit your specific application needs. Data sheets with electrical and mechanical specifications are available at stewartconnector.com



Our space-saving modular Harmonica jacks offer the most features for the maximum reliability and performance you need for today's integrated data systems from the central office all the way through to your mobile applications.

STACKED JACKS



Specifications / Design Features

- CAT3 to CAT5e connectors are available in shielded and unshielded configurations to support Gigabit networks
- Provides 100 g of Contact Normal Force (minimum)
- Jack dimensions meet FCC requirements when plated with 50 microinches of gold
- Jacks are UL approved and DUXR2 and DUXR8 certified
- Meets RoHS and REACH requirements
- Plastics are high temperature to meet new manufacturing requirements

Description

Stewart Connector offers CAT3 and CAT5e StackJacks. Our space-saving StackJack modular jacks offer the most features for the maximum reliability and performance you need for today's integrated data systems from the central office all the way through to your mobile applications. Our enhanced shielding provides optimum protection against EMI, and our unique panel tabs provide a high normal force for superior shielding effectiveness. The longer springs allow repeated insertions /withdrawals from a panel, and prevent "fish hooking" on the panel during insertion. All of the Stewart StackJack modular jacks can be equipped with EPP-918A contact dressing to increase the durability of the contacts to withstand heavy insertions and extractions of the mating plugs and provide increased protection in harsh environments.

How to Order Stacked Jacks

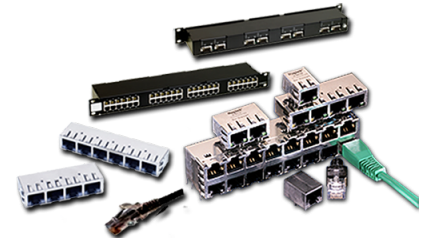
Part Number	Performance	Shield	Shield Type	Ports	Rear Solder Tails
SS-73100-009	CAT5e	Yes	NF	4X4	Off Center
SS-73100-013	CAT5e	No		4X4	
SS73100-060F	CAT5e	Yes	PG4	6X6	On Center
SS-73100-070	CAT5e	No		6X6	
SS-73100-030	CAT5e	No		8x8	
SS73100-047F	CAT5e	Yes	PG4	8X8	On Center
SS-73800-044	Standard	Yes	PG4	1X1	None
SS-7388H11-NF-50	Standard	No		1X1	
SS-7388H11S-NF-50	Standard	Yes	NF	1X1	None
SS-7388H22-NF-50	Standard	No		2X2	
SS-7388H22S-PG4-AC-50	Standard	Yes	PG4	2X2	Off Center
SS-76800-006	Standard	Yes	NF	1 RJ45/2 USB	None

Custom designs are available on request. Email techhelp@belf.com to submit your specific application needs. Data sheets with electrical and mechanical specifications are available at stewartconnector.com

The longer springs allow repeated insertions /withdrawals from a panel, and prevent "fish hooking" on the panel during insertion.

+1 717.235.7512
techhelp@belf.com
stewartconnector.com

LANDING PAGE



Website Features

1. Stewart Connector capabilities page
2. Find your nearest technical field sales representative
3. View larger product image
4. At-A-Glance Catalogs – Downloadable in PDFs
5. Click on image for product page, searchable configurator and...available stock

The screenshot shows the Stewart Connector website landing page. At the top left is the Stewart Connector logo, a 'bel group' company. A search bar is located at the top right. A navigation menu includes links for Home, Divisions/Brands, Contact Us, Library, Representative, Capabilities, Stock Check, and Request Information. The main heading is 'Stewart Connector – Ethernet Connectivity'. Below this is a paragraph of text describing the product portfolio. A grid of product categories is displayed, each with a representative image: MagJacks, Modular Plugs, Vertical Jacks, ARJ45™ CAT7a, RJ point five System, MRJ21 Cable Assemblies, Protective Sealant, Punch Down Blocks, Compu-Shield, StackJacks™, Harmonica Jacks, Single Port Jacks, CableJack Connectors, SFP Transceiver, and MRJ21 Patch Panel. At the bottom right, there are two 'Download' buttons for 'At-A-Glance' and 'Focus Catalog'. A small disclaimer at the bottom states: 'MRJ21 and RJ point five are trademarks owned by TE Connectivity used under license.' The 'Rohs' logo is visible in the bottom right corner.

1 points to the 'Capabilities' link in the navigation menu.

2 points to the search bar.

3 points to the 'View Larger' link for the product image.

4 points to the 'Download At-A-Glance' and 'Download Focus Catalog' buttons.

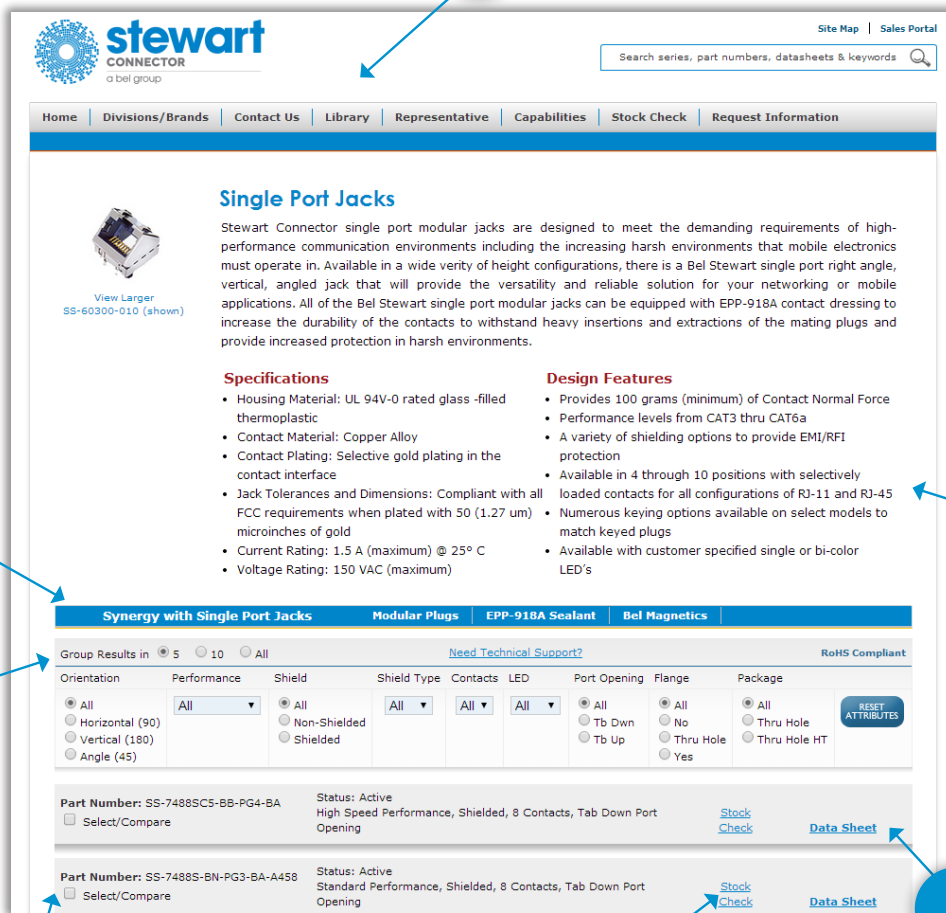
5 points to a product image in the grid.



PRODUCT PAGE EXAMPLE

Website Features

1. Stewart Connector Data Sheets
2. Design Features and Common Specifications
3. Other products that are synergistic to the product viewed
4. Available stock in distribution
5. Group Results in 5, 10 or All findings
6. Compare Results
7. Product Data Sheets



+1 717.235.7512
 techhelp@belf.com
stewartconnector.com



Stewart Connector

11118 Susquehanna Trail South
Glen Rock, PA. 17327
Tel 717-235-7512
Fax 717-235-4675

Bel Stewart GmbH

Industriestrasse 20
61381 Friedrichsdorf, Germany
T +49 6172 9552 0
F +49 6172 9552 40

Bel Fuse Ltd.

8/F Luk Hop Industrial Building
8 Luk Hop Street
San Po Kong
Kowloon, Hong Kong
T +852 2328 5515
F +852 2352 3706

Local Support

Our regional sales offices are ready to provide expert local applications and sales support. In addition, our extensive network of manufacturers' representatives and distributors help bring our solutions to you.

Please visit us at stewartconnector.com for a list of our regional offices or to find a local Stewart Connector representative.

Looking for pricing, stock, or lifecycle information?

Click below to explore more details on WIN SOURCE:

 [View SS-60300-010](#) on WIN SOURCE

 [Stewart Connector](#) Information

Optimize Your Supply Chain with WIN SOURCE Solutions

-  Global Sourcing Solution
-  Obsolete Management
-  Cost Control Management
-  Shortage Management
-  Alternative Solution
-  Excess Inventory Management