



THE DATASHEET OF DLPC3420ZVB



DLPC3420 Display Controller

1 Features

- Display controller for DLP160AP (0.16 QnHD) DMD
 - Supports input resolutions up to QnHD
 - Low-power DMD interface with interface training
- Input frame rates up to 60 Hz
- Pixel data processing:
 - Content adaptive illumination control (CAIC)
 - 1D Keystone correction
 - Color coordinate adjustment
 - Active power management processing
 - Programmable degamma
 - Color space conversion
 - 4:2:2 to 4:4:4 chroma interpolation
- 24-bit, input pixel interface support:
 - Parallel or BT656, interface protocols
 - Pixel clock up to 155 MHz
 - Multiple input pixel data format options
- MIPI® DSI (display serial interface) type 3:
 - 1-4 lanes, up to 470-Mbps lane speed
- External flash support
- Auto DMD parking at power down
- Embedded frame memory (eDRAM)
- System features:
 - I²C device control
 - Programmable splash screens
 - Programmable LED current control
 - Display image rotation
- Pair with [DLPA2000](#) and [DLPA2005](#) PMIC (power management integrated circuit) and LED driver

2 Applications

- [Mobile projector](#)
- [Smart display](#)
- [Smartphone](#)
- [Augmented reality glasses](#)
- [Smart home displays](#)
- [Pico projectors](#)

3 Description

The DLPC3420 digital controller, part of the DLP160AP (0.16 QnHD) chipset, enables operation of the DLP160AP digital micromirror device (DMD). The DLPC3420 controller provides a convenient, multi-functional interface between user electronics and the DMD, enabling small form factor and low power display applications.

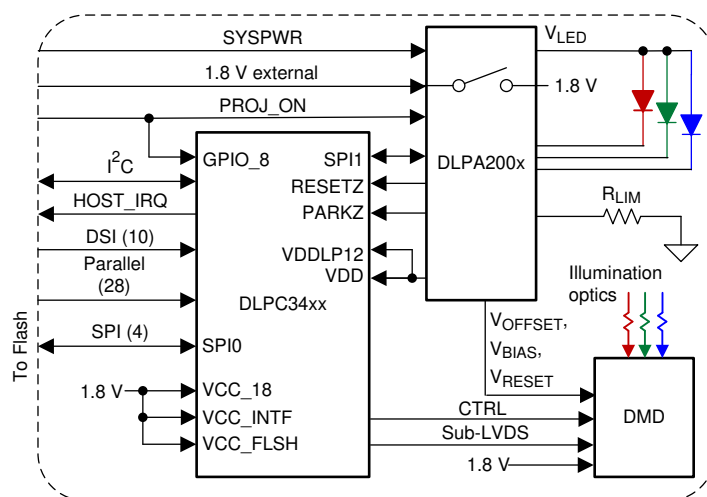
Visit the [getting started with TI DLP®Pico™ display technology](#) page, and view the [programmer's guide](#) to learn how to get started.

The chipset includes established resources to help the user accelerate the design cycle, which include [production ready optical modules](#), [optical module manufacturers](#), and [design houses](#).

Device Information

| PART NUMBER ⁽¹⁾ | PACKAGE | BODY SIZE (NOM) |
|----------------------------|-------------|-------------------|
| DLPC3420 | NFBGA (176) | 7.00 mm × 7.00 mm |

(1) For all available packages, see the orderable addendum at the end of the data sheet.



Simplified Application



Table of Contents

| | | | |
|---|----|--|----|
| 1 Features | 1 | 7.1 Overview..... | 25 |
| 2 Applications | 1 | 7.2 Functional Block Diagram..... | 25 |
| 3 Description | 1 | 7.3 Feature Description..... | 26 |
| 4 Revision History | 2 | 7.4 Device Functional Modes..... | 39 |
| 5 Pin Configuration and Functions | 3 | 7.5 Programming..... | 39 |
| 6 Specifications | 11 | 8 Application and Implementation | 40 |
| 6.1 Absolute Maximum Ratings..... | 11 | 8.1 Application Information..... | 40 |
| 6.2 ESD Ratings..... | 11 | 8.2 Typical Application..... | 40 |
| 6.3 Recommended Operating Conditions..... | 12 | 9 Power Supply Recommendations | 42 |
| 6.4 Thermal Information..... | 12 | 9.1 PLL Design Considerations..... | 42 |
| 6.5 Power Electrical Characteristics..... | 13 | 9.2 System Power-Up and Power-Down Sequence..... | 42 |
| 6.6 Pin Electrical Characteristics..... | 14 | 9.3 Power-Up Initialization Sequence..... | 46 |
| 6.7 Internal Pullup and Pulldown Electrical Characteristics..... | 16 | 9.4 DMD Fast Park Control (PARKZ)..... | 47 |
| 6.8 DMD Sub-LVDS Interface Electrical Characteristics..... | 17 | 9.5 Hot Plug I/O Usage..... | 47 |
| 6.9 DMD Low-Speed Interface Electrical Characteristics..... | 18 | 10 Layout | 48 |
| 6.10 System Oscillator Timing Requirements..... | 19 | 10.1 Layout Guidelines..... | 48 |
| 6.11 Power Supply and Reset Timing Requirements..... | 19 | 10.2 Layout Example..... | 57 |
| 6.12 Parallel Interface Frame Timing Requirements..... | 20 | 11 Device and Documentation Support | 58 |
| 6.13 Parallel Interface General Timing Requirements..... | 21 | 11.1 Device Support..... | 58 |
| 6.14 BT656 Interface General Timing Requirements..... | 22 | 11.2 Related Documentation..... | 60 |
| 6.15 DSI Host Timing Requirements..... | 22 | 11.3 Related Links..... | 60 |
| 6.16 Flash Interface Timing Requirements..... | 23 | 11.4 Receiving Notification of Documentation Updates..... | 60 |
| 6.17 Other Timing Requirements..... | 24 | 11.5 Support Resources..... | 60 |
| 6.18 DMD Sub-LVDS Interface Switching Characteristics..... | 24 | 11.6 Trademarks..... | 60 |
| 6.19 DMD Parking Switching Characteristics..... | 24 | 11.7 Electrostatic Discharge Caution..... | 60 |
| 6.20 Chipset Component Usage Specification..... | 24 | 11.8 Glossary..... | 60 |
| 7 Detailed Description | 25 | 12 Mechanical, Packaging, and Orderable Information | 60 |
| | | 13 Package Option Addendum | 61 |
| | | 13.1 Packaging Information..... | 61 |

4 Revision History

NOTE: Page numbers for previous revisions may differ from page numbers in the current version.

| Changes from Revision * (October 2021) to Revision A (January 2022) | Page |
|--|------|
| • Changed the device status from Advance Information to Production Data..... | 1 |

5 Pin Configuration and Functions

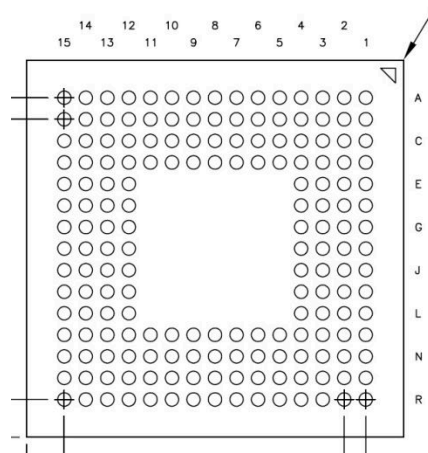


Figure 5-1. ZVB Package 176-Pin NFBGA Bottom View

| | 1 | 2 | 3 | 4 | 5 | 6 | 7 | 8 | 9 | 10 | 11 | 12 | 13 | 14 | 15 |
|---|---------------|--------------|-----------------|-----------------|-----------------|-----------------|--------------|-----------------|-----------------|-----------------|-----------------|-----------|-----------|-----------|-----------|
| A | DMD_LS_CLK | DMD_LS_WDATA | DMD_HS_WDATAH_P | DMD_HS_WDATAG_P | DMD_HS_WDATAF_P | DMD_HS_WDATAE_P | DMD_HS_CLK_P | DMD_HS_WDATAD_P | DMD_HS_WDATAC_P | DMD_HS_WDATAB_P | DMD_HS_WDATAA_P | CMP_OUT | SPI0_CLK | SPI0_CS20 | CMP_PWM |
| B | DMD_DEN_ARSTZ | DMD_LS_RDATA | DMD_HS_WDATAH_N | DMD_HS_WDATAG_N | DMD_HS_WDATAF_N | DMD_HS_WDATAE_N | DMD_HS_CLK_N | DMD_HS_WDATAD_N | DMD_HS_WDATAC_N | DMD_HS_WDATAB_N | DMD_HS_WDATAA_N | SPI0_DIN | SPI0_DOUT | LED_SEL_1 | LED_SEL_0 |
| C | DD3P | DD3N | VDD | VSS | VDD | VSS | VCC | VSS | VCC | HWTEST_EN | RESETZ | SPI0_CS21 | PARKZ | GPIO_00 | GPIO_01 |
| D | DD2P | DD2N | VDD | VCC | VDD | VSS | VDD | VSS | VDD | VSS | VCC_FLSH | VDD | VDD | GPIO_02 | GPIO_03 |
| E | DCLKP | DCLKN | VDD | VSS | | | | | | | | VCC | VSS | GPIO_04 | GPIO_05 |
| F | DD1P | DD1N | RREF | VSS | | | | | | | | VCC | VDD | GPIO_06 | GPIO_07 |
| G | DD0P | DD0N | VSS_PLLM | VSS | | | | | | | | VSS | VSS | GPIO_08 | GPIO_09 |
| H | PLL_REFCLK_J | VDD_PLLM | VSS_PLLD | VSS | | | | | | | | VSS | VDD | GPIO_10 | GPIO_11 |
| J | PLL_REFCLK_O | VDD_PLLD | VSS | VDD | | | | | | | | VDD | VSS | GPIO_12 | GPIO_13 |
| K | PDATA_1 | PDATA_0 | VDD | VSS | | | | | | | | VSS | VCC | GPIO_14 | GPIO_15 |
| L | PDATA_3 | PDATA_2 | VSS | VDD | | | | | | | | VDD | VDD | GPIO_16 | GPIO_17 |
| M | PDATA_5 | PDATA_4 | VCC_INTF | VSS | VSS | VDD | VCC_INTF | VSS | VDD | VDD | VCC | VSS | JTAGTMS1 | GPIO_18 | GPIO_19 |
| N | PDATA_7 | PDATA_6 | VCC_INTF | PDM_CVSTE | HSYNC_CS | 3DR | VCC_INTF | HOST_IRQ | IIC0_SDA | IIC0_SCL | JTAGTMS2 | JTAGTD02 | JTAGTD01 | TSTPT_6 | TSTPT_7 |
| P | VSYNC_WE | DATEN_CMD | PCLK | PDATA_11 | PDATA_13 | PDATA_15 | PDATA_17 | PDATA_19 | PDATA_21 | PDATA_23 | JTAGTRSTZ | JTAGTCK | JTAGTDI | TSTPT_4 | TSTPT_5 |
| R | PDATA_8 | PDATA_9 | PDATA_10 | PDATA_12 | PDATA_14 | PDATA_16 | PDATA_18 | PDATA_20 | PDATA_22 | IIC1_SDA | IIC1_SCL | TSTPT_0 | TSTPT_1 | TSTPT_2 | TSTPT_3 |

Note: The lower image view is from the top.

Table 5-1. Test Pins and General Control

| PIN | | I/O | TYPE ⁽⁴⁾ | DESCRIPTION |
|-----------|--------------------|-----|---------------------|--|
| NAME | NO. | | | |
| HWTEST_EN | C10 | I | 6 | Manufacturing test enable signal. Connect this signal directly to ground on the PCB for normal operation. |
| PARKZ | C13 | I | 6 | DMD fast park control (active low Input with a hysteresis buffer). This signal is used to quickly park the DMD when loss of power is imminent. The longest lifetime of the DMD may not be achieved with the fast park operation; therefore, this signal is intended to only be asserted when a normal park operation is unable to be completed. The PARKZ signal is typically provided from the DLPA200x interrupt output signal. |
| JTAGTCK | P12 | I | 6 | TI internal use. Leave this pin unconnected. |
| JTAGTDI | P13 | I | 6 | TI internal use. Leave this pin unconnected. |
| JTAGTDO1 | N13 ⁽¹⁾ | O | 1 | TI internal use. Leave this pin unconnected. |
| JTAGTDO2 | N12 ⁽¹⁾ | O | 1 | TI internal use. Leave this pin unconnected. |
| JTAGTMS1 | M13 | I | 6 | TI internal use. Leave this pin unconnected. |
| JTAGTMS2 | N11 | I | 6 | TI internal use. Leave this pin unconnected. |
| JTAGTRSTZ | P11 | I | 6 | TI internal use. This pin must be tied to ground, through an external resistor for normal operation. Failure to tie this pin low during normal operation can cause start up and initialization problems. ⁽²⁾ |
| RESETZ | C11 | I | 6 | Power-on reset (active low input with a hysteresis buffer). Self-configuration starts when a low-to-high transition is detected on RESETZ. All controller power and clocks must be stable before this reset is de-asserted. No signals are in their active state while RESETZ is asserted. This pin is typically connected to the RESETZ pin of the DLPA200x. |
| TSTPT_0 | R12 | I/O | 1 | Test pins (includes weak internal pulldown). Pins are tri-stated while RESETZ is asserted low. Sampled as an input test mode selection control approximately 1.5 μ s after de-assertion of RESETZ, and then driven as outputs. ^{(2) (3)} Normal use: reserved for test output. Leave open for normal use. Note: An external pullup may put the DLPC34xx in a test mode. See Section 7.3.6 for more information. |
| TSTPT_1 | R13 | I/O | 1 | |
| TSTPT_2 | R14 | I/O | 1 | |
| TSTPT_3 | R15 | I/O | 1 | |
| TSTPT_4 | P14 | I/O | 1 | |
| TSTPT_5 | P15 | I/O | 1 | |
| TSTPT_6 | N14 | I/O | 1 | |
| TSTPT_7 | N15 | I/O | 1 | |

- (1) If the application design does not require an external pullup, and there is no external logic that can overcome the weak internal pulldown resistor, then this I/O pin can be left open or unconnected for normal operation. If the application design does not require an external pullup, but there is external logic that might overcome the weak internal pulldown resistor, then an external pulldown is recommended to ensure a logic low.
- (2) External resistor must have a value of 8 k Ω or less to compensate for pins that provide internal pullup or pulldown resistors.
- (3) If the application design does not require an external pullup and there is no external logic that can overcome the weak internal pulldown, then the TSTPT I/O can be left open (unconnected) for normal operation. If operation does not call for an external pullup, but there is external logic that might overcome the weak internal pulldown resistor, then an external pulldown resistor is recommended to ensure a logic low.
- (4) See [Table 5-11](#) for type definitions.

Table 5-2. Parallel Port Input

| PIN ^{(1) (2)} | | I/O | TYPE ⁽⁴⁾ | DESCRIPTION | |
|------------------------|-----|-----|---------------------|---|----------------------|
| NAME | NO. | | | PARALLEL RGB MODE | BT656 INTERFACE MODE |
| PCLK | P3 | I | 11 | Pixel clock | Pixel clock |
| PDM_CVS_TE | N4 | I/O | 5 | Parallel data mask. Programmable polarity with default of active high. Optional signal. | Unused |
| VSYNC_WE | P1 | I | 11 | Vsync ⁽³⁾ | Unused |
| HSYNC_CS | N5 | I | 11 | Hsync ⁽³⁾ | Unused |
| DATAEN_CMD | P2 | I | 11 | Data valid | Unused |

Table 5-2. Parallel Port Input (continued)

| PIN ^{(1) (2)} | | I/O | TYPE ⁽⁴⁾ | DESCRIPTION | |
|--|---|-----|---------------------|---|--|
| NAME | NO. | | | PARALLEL RGB MODE | BT656 INTERFACE MODE |
| PDATA_0 PDATA_1 PDATA_2 PDATA_3 PDATA_4 PDATA_5 PDATA_6 PDATA_7 | K2 K1 L2 L1 M2 M1 N2 N1 | I | 11 | (TYPICAL RGB 888) Blue (bit weight 1) Blue (bit weight 2) Blue (bit weight 4) Blue (bit weight 8) Blue (bit weight 16) Blue (bit weight 32) Blue (bit weight 64) Blue (bit weight 128) | BT656_Data (0) BT656_Data (1) BT656_Data (2) BT656_Data (3) BT656_Data (4) BT656_Data (5) BT656_Data (6) BT656_Data (7) |
| PDATA_8 PDATA_9 PDATA_10 PDATA_11 PDATA_12 PDATA_13 PDATA_14 PDATA_15 | R1 R2 R3 P4 R4 P5 R5 P6 | I | 11 | (TYPICAL RGB 888) Green (bit weight 1) Green (bit weight 2) Green (bit weight 4) Green (bit weight 8) Green (bit weight 16) Green (bit weight 32) Green (bit weight 64) Green (bit weight 128) | Unused |
| PDATA_16 PDATA_17 PDATA_18 PDATA_19 PDATA_20 PDATA_21 PDATA_22 PDATA_23 | R6 P7 R7 P8 R8 P9 R9 P10 | I | 11 | (TYPICAL RGB 888) Red (bit weight 1) Red (bit weight 2) Red (bit weight 4) Red (bit weight 8) Red (bit weight 16) Red (bit weight 32) Red (bit weight 64) Red (bit weight 128) | Unused |
| 3DR | N6 | I | 11 | 3D reference <ul style="list-style-type: none"> For 3D applications: left or right 3D reference (left = 1, right = 0). To be provided by the host. Must transition in the middle of each frame (no closer than 1 ms to the active edge of VSYNC). If a 3D application is not used, pull this input low through an external resistor. | |

- (1) PDATA(23:0) bus mapping depends on pixel format and source mode. See later sections for details.
(2) Connect unused inputs to ground or pulldown to ground through an external resistor (8 kΩ or less).
(3) VSYNC and HSYNC polarity can be adjusted by software.
(4) See [Table 5-11](#) for type definitions.

Table 5-3. DSI Input Data and Clock

| PIN | | I/O | TYPE ⁽²⁾ | DESCRIPTION |
|--|--|-----|---------------------|--|
| NAME | NO. | | | |
| DCLKN DCLKP | E2 E1 | I/O | 10 | DSI LVDS differential clock for DSI interface. |
| DD0N DD0P DD1N DD1P DD2N DD2P DD3N DD3P | G2 G1 F2 F1 D2 D1 C2 C1 | I/O | 10 | Differential data bus for DSI data lane LVDS differential pair inputs 0 through 3. (support a maximum of 4 input DSI lanes) ⁽¹⁾ |
| RREF | F3 | — | | DSI reference resistor. RREF is an analog signal that requires a fixed precision 30-kΩ ±1% resistor connected from this pin to ground when DSI is used. If DSI is NOT used, leave this pin unconnected and floating. |

- (1) Differential data bus 0 (DD0x) is required for DSI operation. The remaining three data lanes are optional and only needed depending on the implementation and required video bandwidth. Leave any unused DSI LVDS pairs unconnected and floating.

(2) See [Table 5-11](#) for type definitions.**Table 5-4. DMD Reset and Bias Control**

| PIN | | I/O | TYPE ⁽¹⁾ | DESCRIPTION |
|---------------|-----|-----|---------------------|---|
| NAME | NO. | | | |
| DMD_DEN_ARSTZ | B1 | O | 2 | DMD driver enable (active high). DMD reset (active low). When corresponding I/O power is supplied, the controller drives this signal low after the DMD is parked and before power is removed from the DMD. If the 1.8-V power to the DLPC34xx is independent of the 1.8-V power to the DMD, then TI recommends including a weak, external pulldown resistor to hold the signal low in case DLPC34xx power is inactive while DMD power is applied. |
| DMD_LS_CLK | A1 | O | 3 | DMD low speed (LS) interface clock |
| DMD_LS_WDATA | A2 | O | 3 | DMD low speed (LS) serial write data |
| DMD_LS_RDATA | B2 | I | 6 | DMD low speed (LS) serial read data |

(1) See [Table 5-11](#) for type definitions.**Table 5-5. DMD Sub-LVDS Interface**

| PIN | | I/O | TYPE ⁽¹⁾ | DESCRIPTION |
|--|--|-----|---------------------|--|
| NAME | NO. | | | |
| DMD_HS_CLK_P DMD_HS_CLK_N | A7 B7 | O | 4 | DMD high speed (HS) interface clock |
| DMD_HS_WDATA_H_P DMD_HS_WDATA_H_N DMD_HS_WDATA_G_P DMD_HS_WDATA_G_N DMD_HS_WDATA_F_P DMD_HS_WDATA_F_N DMD_HS_WDATA_E_P DMD_HS_WDATA_E_N DMD_HS_WDATA_D_P DMD_HS_WDATA_D_N DMD_HS_WDATA_C_P DMD_HS_WDATA_C_N DMD_HS_WDATA_B_P DMD_HS_WDATA_B_N DMD_HS_WDATA_A_P DMD_HS_WDATA_A_N | A3 B3 A4 B4 A5 B5 A6 B6 A8 B8 A9 B9 A10 B10 A11 B11 | O | 4 | DMD sub-LVDS high speed (HS) interface write data lanes. The true numbering and application of the DMD_HS_WDATA pins depend on the software configuration. See Table 7-8 . |

(1) See [Table 5-11](#) for type definitions.**Table 5-6. Peripheral Interface**

| PIN ⁽¹⁾ | | I/O | TYPE ⁽²⁾ | DESCRIPTION |
|-------------------------|-----|-----|---------------------|---|
| NAME | NO. | | | |
| CMP_OUT | A12 | I | 6 | Successive approximation ADC (analog-to-digital converter) comparator output (DLPC34xx Input). To implement, use a successive approximation ADC with a thermistor feeding one input of the external comparator and the DLPC34xx controller GPIO_10 (RC_CHARGE) pin driving the other side of the comparator. It is recommended to use the DLPA200x to achieve this function. CMP_OUT must be pulled-down to ground if this function is not used. (hysteresis buffer) |
| CMP_PWM | A15 | O | 1 | TI internal use. Leave this pin unconnected. |
| HOST_IRQ ⁽³⁾ | N8 | O | 9 | Host interrupt (output) HOST_IRQ indicates when the DLPC34xx auto-initialization is in progress and most importantly when it completes. This pin is tri-stated during reset. An external pullup must be included on this signal. |
| IIC0_SCL ⁽⁴⁾ | N10 | I/O | 7 | I ² C secondary (port 0) SCL (bidirectional, open-drain signal with input hysteresis): This pin requires an external pullup resistor. The secondary I ² C I/Os are 3.6-V tolerant (high-voltage-input tolerant) and are powered by VCC_INTF (which can be 1.8, 2.5, or 3.3 V). External I ² C pullups must be connected to a host supply with an equal or higher supply voltage, up to a maximum of 3.6 V (a lower pullup supply voltage does not typically satisfy the V _{IH} specification of the secondary I ² C input buffers). |
| IIC1_SCL | R11 | I/O | 8 | TI internal use. TI recommends an external pullup resistor. |
| IIC0_SDA ⁽⁴⁾ | N9 | I/O | 7 | I ² C secondary (port 0) SDA. (bidirectional, open-drain signal with input hysteresis): This pin requires an external pullup resistor. The secondary I ² C port is the control port of controller. The secondary I ² C I/O pins are 3.6-V tolerant (high-volt-input tolerant) and are powered by VCC_INTF (which can be 1.8, 2.5, or 3.3 V). External I ² C pullups must be connected to a host supply with an equal or higher supply voltage, up to a maximum of 3.6 V (a lower pullup supply voltage does not typically satisfy the V _{IH} specification of the secondary I ² C input buffers). |
| IIC1_SDA | R10 | I/O | 8 | TI internal use. TI recommends an external pullup resistor. |

Table 5-6. Peripheral Interface (continued)

| PIN ⁽¹⁾ | | I/O | TYPE ⁽²⁾ | DESCRIPTION |
|--------------------|-----|-----|---------------------|---|
| NAME | NO. | | | |
| LED_SEL_0 | B15 | O | 1 | LED enable select. Automatically controlled by the DLPC34xx programmable DMD sequence. LED_SEL(1:0) 00 Enabled LED 01 None 10 Red 11 Green Blue |
| LED_SEL_1 | B14 | O | 1 | The controller drives these signals low when RESETZ is asserted and the corresponding I/O power is supplied. The controller continues to drive these signals low throughout the auto-initialization process. A weak, external pull-down resistor is recommended to ensure that the LEDs are disabled when I/O power is not applied. |
| SPI0_CLK | A13 | O | 13 | SPI (Serial Peripheral Interface) port 0, clock. This pin is typically connected to the flash memory clock. |
| SPI0_CSZ0 | A14 | O | 13 | SPI port 0, chip select 0 (active low output). This pin is typically connected to the flash memory chip select. TI recommends an external pullup resistor to avoid floating inputs to the external SPI device during controller reset assertion. |
| SPI0_CSZ1 | C12 | O | 13 | SPI port 0, chip select 1 (active low output). This pin typically remains unused. TI recommends an external pullup resistor to avoid floating inputs to the external SPI device during controller reset assertion. |
| SPI0_DIN | B12 | I | 12 | Synchronous serial port 0, receive data in. This pin is typically connected to the flash memory data out. |
| SPI0_DOUT | B13 | O | 13 | Synchronous serial port 0, transmit data out. This pin is typically connected to the flash memory data in. |

- (1) External pullup resistor must be 8 kΩ or less.
- (2) See [Table 5-11](#) for type definitions.
- (3) For more information about usage, see [Section 7.3.2](#).
- (4) When VCC_INTF is powered and VDD is not powered, the controller may drive the IIC0_xxx pins low which prevents communication on this I²C bus. Do not power up the VCC_INTF pin before powering up the VDD pin for any system that has additional secondary devices on this bus.

Table 5-7. GPIO Peripheral Interface

| PIN ⁽¹⁾ | | I/O | TYPE ⁽³⁾ | DESCRIPTION ⁽²⁾ |
|--------------------|-----|-----|---------------------|---|
| NAME | NO. | | | |
| GPIO_19 | M15 | I/O | 1 | General purpose I/O 19 (hysteresis buffer). Optional GPIO. If unused TI recommends this pin be configured as a logic zero GPIO output and left unconnected. Otherwise this pin requires an external pullup or pulldown to avoid a floating GPIO input. |
| GPIO_18 | M14 | I/O | 1 | General purpose I/O 18 (hysteresis buffer). Options: 1. Optional GPIO. If unused TI recommends this pin be configured as a logic zero GPIO output and left unconnected. Otherwise this pin requires an external pullup or pulldown to avoid a floating GPIO input. 2. MTR_SENSE, Motor Sense (Input): For focus motor control applications, this GPIO must be configured as an input to the DLPC34xx and supplied from the focus motor position sensor. |
| GPIO_17 | L15 | I/O | 1 | General purpose I/O 17 (hysteresis buffer). Optional GPIO. If unused TI recommends this pin be configured as a logic zero GPIO output and left unconnected. Otherwise this pin requires an external pullup or pulldown to avoid a floating GPIO input. |
| GPIO_16 | L14 | I/O | 1 | General purpose I/O 16 (hysteresis buffer). Optional GPIO. If unused TI recommends this pin be configured as a logic zero GPIO output and left unconnected. Otherwise this pin requires an external pullup or pulldown to avoid a floating GPIO input. |
| GPIO_15 | K15 | I/O | 1 | General purpose I/O 15 (hysteresis buffer). Optional GPIO. If unused TI recommends this pin be configured as a logic zero GPIO output and left unconnected. Otherwise this pin requires an external pullup or pulldown to avoid a floating GPIO input. |
| GPIO_14 | K14 | I/O | 1 | General purpose I/O 14 (hysteresis buffer). Optional GPIO. If unused TI recommends this pin be configured as a logic zero GPIO output and left unconnected. Otherwise this pin requires an external pullup or pulldown to avoid a floating GPIO input. |
| GPIO_13 | J15 | I/O | 1 | General purpose I/O 13 (hysteresis buffer). Optional GPIO. If unused TI recommends this pin be configured as a logic zero GPIO output and left unconnected. Otherwise this pin requires an external pullup or pulldown to avoid a floating GPIO input. |
| GPIO_12 | J14 | I/O | 1 | General purpose I/O 12 (hysteresis buffer). Optional GPIO. If unused TI recommends this pin be configured as a logic zero GPIO output and left unconnected. Otherwise this pin requires an external pullup or pulldown to avoid a floating GPIO input. |

Table 5-7. GPIO Peripheral Interface (continued)

| PIN ⁽¹⁾ | | I/O | TYPE ⁽³⁾ | DESCRIPTION ⁽²⁾ |
|--------------------|-----|-----|---------------------|---|
| NAME | NO. | | | |
| GPIO_11 | H15 | I/O | 1 | General purpose I/O 11 (hysteresis buffer). Options: <ol style="list-style-type: none"> 1. Thermistor power enable (output). Turns on the power to the thermistor when it is used and enabled. 2. Optional GPIO. If unused TI recommends this pin be configured as a logic zero GPIO output and left unconnected. Otherwise this pin requires an external pullup or pulldown to avoid a floating GPIO input. |
| GPIO_10 | H14 | I/O | 1 | General purpose I/O 10 (hysteresis buffer). Options: <ol style="list-style-type: none"> 1. RC_CHARGE (output): Intended to feed the RC charge circuit of the thermistor interface. 2. Optional GPIO. If unused TI recommends this pin be configured as a logic zero GPIO output and left unconnected. Otherwise this pin requires an external pullup or pulldown to avoid a floating GPIO input. |
| GPIO_09 | G15 | I/O | 1 | General purpose I/O 09 (hysteresis buffer). Optional GPIO. If unused TI recommends this pin be configured as a logic zero GPIO output and left unconnected. Otherwise this pin requires an external pullup or pulldown to avoid a floating GPIO input. |
| GPIO_08 | G14 | I/O | 1 | General purpose I/O 08 (hysteresis buffer). Normal mirror parking request (active low): To be driven by the PROJ_ON output of the host. A logic low on this signal causes the DLPC34xx to PARK the DMD, but it does not power down the DMD (the DLPA200x does that instead). At power-up, GPIO_08 must remain high until HOST_IRQ goes low (see Section 9.3). |
| GPIO_07 | F15 | I/O | 1 | General purpose I/O 07 (hysteresis buffer). If unused TI recommends this pin be configured as a logic zero GPIO output and left unconnected. Otherwise this pin requires an external pullup or pulldown to avoid a floating GPIO input. |
| GPIO_06 | F14 | I/O | 1 | General purpose I/O 06 (hysteresis buffer). Optional GPIO. If unused TI recommends this pin be configured as a logic zero GPIO output and left unconnected. Otherwise this pin requires an external pullup or pulldown to avoid a floating GPIO input. |
| GPIO_05 | E15 | I/O | 1 | General purpose I/O 05 (hysteresis buffer). Optional GPIO. If unused TI recommends this pin be configured as a logic zero GPIO output and left unconnected. Otherwise this pin requires an external pullup or pulldown to avoid a floating GPIO input. |
| GPIO_04 | E14 | I/O | 1 | General purpose I/O 04 (hysteresis buffer). Options: <ol style="list-style-type: none"> 1. 3D glasses control (output): Controls the shutters on 3D glasses (Left = 1, Right = 0). 2. SPI1_CSZ1 (active-low output): Optional SPI1 chip select 1 signal. Requires an external pullup resistor to deactivate this signal during reset and auto-initialization processes. 3. Optional GPIO. If unused TI recommends this pin be configured as a logic zero GPIO output and left unconnected. Otherwise this pin requires an external pullup or pulldown to avoid a floating GPIO input. |
| GPIO_03 | D15 | I/O | 1 | General purpose I/O 03 (hysteresis buffer). SPI1_CSZ0 (active low output): SPI1 chip select 0 signal. This pin is typically connected to the DLPA200x SPI_CSZ pin. Requires an external pullup resistor to deactivate this signal during reset and auto-initialization processes. |
| GPIO_02 | D14 | I/O | 1 | General purpose I/O 02 (hysteresis buffer). Options: <ol style="list-style-type: none"> 1. SPI1_DOUT (output): SPI1 data output signal. This pin is typically connected to the DLPA200x SPI_DIN pin. 2. Optional DSI Bus Width Config 1 (input): The controller samples this pin during boot and is used to define the number of lanes used for DSI operation. Requires an external pullup or pulldown resistor to configure as defined in Table 5-8. After boot, this GPIO pin will continue to be used as SPI1_DOUT. Select the external pullup or pulldown resistor to not interfere. |

Table 5-7. GPIO Peripheral Interface (continued)

| PIN ⁽¹⁾ | | I/O | TYPE ⁽³⁾ | DESCRIPTION ⁽²⁾ |
|--------------------|-----|-----|---------------------|--|
| NAME | NO. | | | |
| GPIO_01 | C15 | I/O | 1 | General purpose I/O 01 (hysteresis buffer). Options: 1. SPI1_CLK (output): SPI1 clock signal. This pin is typically connected to the DLPA200x SPI_CLK pin. 2. Optional DSI Bus Width Config 0 (input): The controller samples this pin during boot and is used to define the number of lanes used for DSI operation. Requires an external pullup or pulldown resistor to configure as defined in Table 5-8 . After boot, this GPIO pin will continue to be used as SPI1_CLK. Select the external pullup or pulldown resistor to not interfere. |
| GPIO_00 | C14 | I/O | 1 | General purpose I/O 00 (hysteresis buffer). SPI1_DIN (input): SPI1 data input signal. This pin is typically connected to the DLPA200x SPI_DOUT pin. |

- (1) GPIO pins must be configured through software for input, output, bidirectional, or open-drain operation. Some GPIO pins have one or more alternative use modes, which are also software configurable. An external pullup resistor is required for each signal configured as open-drain.
- (2) General purpose I/O for the DLPC3420 controllers. These GPIO pins are software configurable.
- (3) See [Table 5-11](#) for type definitions.

Table 5-8. GPIO_01 and GPIO_02

| GPIO_02 | GPIO_01 | Number of DSI Data Lanes |
|-------------------|-------------------|--------------------------|
| DSI Lane Config 1 | DSI Lane Config 0 | |
| 0 | 0 | 1 |
| 0 | 1 | 2 |
| 1 | 0 | 3 |
| 1 | 1 | 4 |

Table 5-9. Clock and PLL Support

| PIN | | I/O | TYPE ⁽¹⁾ | DESCRIPTION |
|--------------|-----|-----|---------------------|--|
| NAME | NO. | | | |
| PLL_REFCLK_I | H1 | I | 11 | Reference clock crystal input. If an external oscillator is used instead of a crystal, use this pin as the oscillator input. |
| PLL_REFCLK_O | J1 | O | 5 | Reference clock crystal return. If an external oscillator is used instead of a crystal, leave this pin unconnected (floating with no added capacitive load). |

- (1) See [Table 5-11](#) for type definitions.

Table 5-10. Power and Ground

| PIN | | I/O | TYPE | DESCRIPTION |
|--------|--|-----|------|--|
| NAME | NO. | | | |
| VDD | C5, D5, D7, D12, J4, J12, K3, L4, L12, M6, M9, D9, D13, F13, H13, L13, M10, D3, E3 | — | PWR | Core 1.1-V power (main 1.1 V) |
| VDDL12 | C3 | — | PWR | DSI PHY Low Power mode driver supply. It is recommended to externally tie this pin to VDD. |

Table 5-10. Power and Ground (continued)

| PIN | | I/O | TYPE | DESCRIPTION |
|----------|--|-----|------|---|
| NAME | NO. | | | |
| VSS | C4, D6, D8, D10, E4, E13, F4, G4, G12, H4, H12, J3, J13, K4, K12, L3, M4, M5, M8, M12, G13, C6, C8 | — | GND | Core ground (eDRAM, DSI, I/O ground, thermal ground) |
| VCC18 | C7, C9, D4, E12, F12, K13, M11 | — | PWR | All 1.8-V I/O power: (1.8-V power supply for RESETZ, PARKZ, LED_SEL, CMP_OUT, GPIO, IIC1, TSTPT, and JTAG pins) |
| VCC_INTF | M3, M7, N3, N7 | — | PWR | Host or parallel interface I/O power: 1.8 V to 3.3 V (Includes IIC0, PDATA, video syncs, and HOST_IRQ pins) |
| VCC_FLSH | D11 | — | PWR | Flash interface I/O power: 1.8 V to 3.3 V (Dedicated SPI0 power pin) |
| VDD_PLLM | H2 | — | PWR | MCG PLL (primary clock generator phase lock loop) 1.1-V power |
| VSS_PLLM | G3 | — | RTN | MCG PLL return |
| VDD_PLLD | J2 | — | PWR | DCG PLL (DMD clock generator phase lock loop) 1.1-V power |
| VSS_PLLD | H3 | — | RTN | DCG PLL return |

Table 5-11. I/O Type Subscript Definition

| SUBSCRIPT | I/O | | SUPPLY REFERENCE | ESD STRUCTURE |
|-----------|--|--|--|----------------------------------|
| | DESCRIPTION | | | |
| 1 | 1.8-V LVCMOS I/O buffer with 8-mA drive | | V _{cc18} | ESD diode to GND and supply rail |
| 2 | 1.8-V LVCMOS I/O buffer with 4-mA drive | | V _{cc18} | ESD diode to GND and supply rail |
| 3 | 1.8-V LVCMOS I/O buffer with 24-mA drive | | V _{cc18} | ESD diode to GND and supply rail |
| 4 | 1.8-V sub-LVDS output with 4-mA drive | | V _{cc18} | ESD diode to GND and supply rail |
| 5 | 1.8-V, 2.5-V, 3.3-V LVCMOS with 4-mA drive | | V _{cc_INTF} | ESD diode to GND and supply rail |
| 6 | 1.8-V LVCMOS input | | V _{cc18} | ESD diode to GND and supply rail |
| 7 | 1.8-V, 2.5-V, 3.3-V I ² C with 3-mA drive | | V _{cc_INTF} | ESD diode to GND and supply rail |
| 8 | 1.8-V I ² C with 3-mA drive | | V _{cc18} | ESD diode to GND and supply rail |
| 9 | 1.8-V, 2.5-V, 3.3-V LVCMOS with 8-mA drive | | V _{cc_INTF} | ESD diode to GND and supply rail |
| 10 | DSI LVDS I/O | | V _{DD} for high speed transmit, high speed receive, and low power receive. V _{DDL12} for low power transmit | ESD diode to GND and supply rail |
| 11 | 1.8-V, 2.5-V, 3.3-V LVCMOS input | | V _{cc_INTF} | ESD diode to GND and supply rail |
| 12 | 1.8-V, 2.5-V, 3.3-V LVCMOS input | | V _{cc_FLSH} | ESD diode to GND and supply rail |
| 13 | 1.8-V, 2.5-V, 3.3-V LVCMOS with 8-mA drive | | V _{cc_FLSH} | ESD diode to GND and supply rail |

6 Specifications

6.1 Absolute Maximum Ratings

over operating free-air temperature (unless otherwise noted)⁽¹⁾

| | | MIN | MAX | UNIT |
|--|--------------------------------|------|--------------------|------|
| SUPPLY VOLTAGE⁽²⁾ | | | | |
| V _(VDD) | | -0.3 | 1.21 | V |
| V _(VDDL P12) | | -0.3 | 1.32 | V |
| V _(VCC18) | | -0.3 | 1.96 | V |
| DMD Sub-LVDS Interface (DMD_HS_CLK_x and DMD_HS_WDATA_x_y) | | -0.3 | 1.96 | V |
| V _(VCC_INTF) | | -0.3 | 3.60 | V |
| V _(VCC_FLSH) | | -0.3 | 3.60 | V |
| V _(VDD_PLLM) (MCG PLL) | | -0.3 | 1.21 | V |
| V _(VDD_PLLD) (DCG PLL) | | -0.3 | 1.21 | V |
| V _{I2C buffer} (I/O type 7) | | -0.3 | See ⁽³⁾ | V |
| GENERAL | | | | |
| T _J | Operating junction temperature | -30 | 125 | °C |
| T _{stg} | Storage temperature | -40 | 125 | °C |

- (1) Stresses beyond those listed under [Section 6.1](#) may cause permanent damage to the device. These are stress ratings only, which do not imply functional operation of the device at these or any other conditions beyond those indicated under [Section 6.3](#). Exposure to absolute-maximum-rated conditions for extended periods may affect device reliability.
- (2) All voltage values are with respect to VSS (GND).
- (3) I/O is high voltage tolerant; that is, if VCC_INTF = 1.8 V, the input is 3.3-V tolerant, and if VCC_INTF = 3.3 V, the input is 5-V tolerant.

6.2 ESD Ratings

| | | | VALUE | UNIT |
|--------------------|-------------------------|--|-------|------|
| V _(ESD) | Electrostatic discharge | Human-body model (HBM), per ANSI/ESDA/JEDEC JS-001, all pins ⁽¹⁾ | ±2000 | V |
| | | Charged-device model (CDM), per JEDEC specification JESD22-C101, all pins ⁽²⁾ | ±500 | |

- (1) JEDEC document JEP155 states that 500-V HBM allows safe manufacturing with a standard ESD control process.
- (2) JEDEC document JEP157 states that 250-V CDM allows safe manufacturing with a standard ESD control process.

6.3 Recommended Operating Conditions

over operating free-air temperature range (unless otherwise noted)

| | | MIN | NOM | MAX | UNIT |
|--------------------------|---|-------|-------|-------|------|
| V _(VDD) | Core power 1.1 V (main 1.1 V) | 1.045 | 1.10 | 1.155 | V |
| V _(VDDL12) | DSI PHY low power mode driver supply See (3) (4) | 1.045 | 1.10 | 1.155 | V |
| V _(VCC18) | All 1.8-V I/O power: (1.8-V power supply for RESETZ, PARKZ LED_SEL, CMP_OUT, GPIO, IIC1, TSTPT, and JTAG pins.) | 1.64 | 1.80 | 1.96 | V |
| V _(VCC_INTF) | Host or parallel interface I/O power: 1.8 to 3.3 V (includes IIC0, PDATA, video syncs, and HOST_IRQ pins) See (1) | 1.64 | 1.80 | 1.96 | V |
| | | 2.28 | 2.50 | 2.72 | |
| | | 3.02 | 3.30 | 3.58 | |
| V _(VCC_FLASH) | Flash interface I/O power: 1.8 to 3.3 V See (1) | 1.64 | 1.80 | 1.96 | V |
| | | 2.28 | 2.50 | 2.72 | |
| | | 3.02 | 3.30 | 3.58 | |
| V _(VDD_PLLM) | MCG PLL 1.1-V power See (2) | 1.025 | 1.100 | 1.155 | V |
| V _(VDD_PLLD) | DCG PLL 1.1-V power See (2) | 1.025 | 1.100 | 1.155 | V |
| T _A | Operating ambient temperature ⁽⁵⁾ | –30 | | 85 | °C |
| T _J | Operating junction temperature | –30 | | 105 | °C |

- These supplies have multiple valid ranges.
- The minimum voltage is lower than other 1.1-V supply minimum to enable additional filtering. This filtering may result in an IR drop across the filter.
- It is recommended that VDDL12 rail is tied to the VDD rail. The DSI LP supply (VDDL12) is only used for read responses from the controller which are not supported. Because of this, a separate 1.2-V rail is not required. If a separate 1.2-V supply is already being used to power this rail, a voltage tolerance of ±6.67% is allowed on this separate 1.2-V supply.
- When the DSI-PHY LP supply (VDDL12) is fed from a supply separate from VDD, the VDDL12 power must sequence ON after the 1.1-V core supply and must sequence OFF before the 1.1-V core supply.
- The operating ambient temperature range assumes 0 forced air flow, a JEDEC JESD51 junction-to-ambient thermal resistance value at 0 forced air flow (R_{θJA} at 0 m/s), a JEDEC JESD51 standard test card and environment, along with minimum and maximum estimated power dissipation across process, voltage, and temperature. Thermal conditions vary by application, and this affects R_{θJA}. Thus, maximum operating ambient temperature varies by application.
 - $T_{a_min} = T_{j_min} - (P_{d_min} \times R_{\theta JA}) = -30^{\circ}\text{C} - (0.0\text{ W} \times 30.3^{\circ}\text{C/W}) = -30^{\circ}\text{C}$
 - $T_{a_max} = T_{j_max} - (P_{d_max} \times R_{\theta JA}) = +105^{\circ}\text{C} - (0.348\text{ W} \times 30.3^{\circ}\text{C/W}) = +94.4^{\circ}\text{C}$

6.4 Thermal Information

| THERMAL METRIC ⁽¹⁾ | | DLPC3420 | UNIT |
|-------------------------------|---|---|------|
| | | ZVB (NFBGA) | |
| | | 176 PINS | |
| R _{θJC} | Junction-to-case top thermal resistance | 11.2 | °C/W |
| R _{θJA} | Junction-to-air thermal resistance | at 0 m/s of forced airflow ⁽²⁾ | 30.3 |
| | | at 1 m/s of forced airflow ⁽²⁾ | 27.4 |
| | | at 2 m/s of forced airflow ⁽²⁾ | 26.6 |
| Ψ _{JT} | Temperature variance from junction to package top center temperature, per unit power dissipation ⁽³⁾ | 0.27 | °C/W |

- For more information about traditional and new thermal metrics, see the *IC Package Thermal Metrics* application report, [SPRA953](#).
- Thermal coefficients abide by JEDEC Standard 51. R_{θJA} is the thermal resistance of the package as measured using a JEDEC defined standard test PCB. This JEDEC test PCB is not necessarily representative of the DLPC34xx PCB and thus the reported thermal resistance may not be accurate in the actual product application. Although the actual thermal resistance may be different, it is the best information available during the design phase to estimate thermal performance.
- Example: (0.5 W) × (0.2°C/W) ≈ 0.1°C temperature rise.

6.5 Power Electrical Characteristics

over operating free-air temperature range (unless otherwise noted)

| PARAMETER ^{(1) (2) (3)} | TEST CONDITIONS | MIN | TYP ⁽⁴⁾ | MAX ⁽⁵⁾ | UNIT |
|--|--------------------|-----|--------------------|--------------------|------|
| $I_{(VDD)}$ + $I_{(VDD_PLL M)}$ + $I_{(VDD_PLL D)}$ 1.1-V rails | Frame rate = 60 Hz | | 69 | 75 | mA |
| $I_{(VDD_PLL M)}$ MCG PLL 1.1-V current ⁽⁶⁾ | Frame rate = 60 Hz | | 6 | | mA |
| $I_{(VDD_PLL D)}$ DCG PLL 1.1-V current ⁽⁶⁾ | Frame rate = 60 Hz | | 6 | | mA |
| $I_{(VCC18)}$ All 1.8-V I/O current: (1.8-V power supply for all I/O other than the host or parallel interface and the SPI flash interface) | Frame rate = 60 Hz | | 21 | 23 | mA |
| $I_{(VCC_INTF)}$ Host or parallel interface I/O current: 1.8 to 3.3 V (includes IIC0, PDATA, video syncs, and HOST_IRQ pins) ⁽⁶⁾ | Frame rate = 60 Hz | | 2 | | mA |
| $I_{(VCC_FLSH)}$ Flash interface I/O current: 1.8 to 3.3 V ⁽⁶⁾ | Frame rate = 60 Hz | | 1 | | mA |

- (1) Values assume all pins using 1.1 V are tied together (including VDDL12), and programmable host and flash I/O are at the minimum nominal voltage (that is 1.8 V).
- (2) Input image is 320 × 180 (QnHD) 24 bits using VESA reduced blanking v2 timings on the parallel interface at the frame rate shown with the 0.16-in QnHD (DLP160AP) DMD. The controller has the CAIC and LABB algorithms turned off.
- (3) The values do not take into account software updates or customer changes that may affect power performance.
- (4) Assumes nominal process, voltage, and temperature (25°C nominal ambient) with nominal input images.
- (5) Assumes worst case process, maximum voltage, and high nominal ambient temperature of 65°C with worst case input image.
- (6) This rail was not measured due to board limitations. Simulation values are used instead. Simulations assume 12.5% activity factor, 30% clock gating on appropriate domains, and mixed SVT (standard threshold voltage) or HVT (high threshold voltage) cells

6.6 Pin Electrical Characteristics

over operating free-air temperature range (unless otherwise noted)

| PARAMETER ⁽¹⁾ | | TEST CONDITIONS ⁽²⁾ | MIN | TYP | MAX | UNIT | |
|--------------------------|------------------------------------|--|------------------|------|----------------|--------------------|---|
| V _{IH} | High-level input threshold voltage | I ² C buffer (I/O type 7) | | | 0.7 × VCC_INTF | See ⁽³⁾ | V |
| | | I/O type 1, 2, 3, 6, 8 except pins noted in ⁽⁴⁾ | VCC18 = 1.8 V | 1.17 | | 3.6 | |
| | | I/O type 1, 6 for pins noted in ⁽⁴⁾ | VCC18 = 1.8 V | 1.3 | | 3.6 | |
| | | I/O type 5, 9, 11 | VCC_INTF = 1.8 V | 1.17 | | 3.6 | |
| | | I/O type 12, 13 | VCC_FLSH = 1.8 V | 1.17 | | 3.6 | |
| | | I/O type 5, 9, 11 | VCC_INTF = 2.5 V | 1.7 | | 3.6 | |
| | | I/O type 12, 13 | VCC_FLSH = 2.5 V | 1.7 | | 3.6 | |
| | | I/O type 5, 9, 11 | VCC_INTF = 3.3 V | 2.0 | | 3.6 | |
| I/O type 12, 13 | VCC_FLSH = 3.3 V | 2.0 | | 3.6 | | | |
| V _{IL} | Low-level input threshold voltage | I ² C buffer (I/O type 7) | | -0.5 | | 0.3 × VCC_INTF | V |
| | | I/O type 1, 2, 3, 6, 8 except pins noted in ⁽⁴⁾ | VCC18 = 1.8 V | -0.3 | | 0.63 | |
| | | I/O type 1, 6 for pins noted in ⁽⁴⁾ | VCC18 = 1.8 V | -0.3 | | 0.5 | |
| | | I/O type 5, 9, 11 | VCC_INTF = 1.8 V | -0.3 | | 0.63 | |
| | | I/O type 12, 13 | VCC_FLSH = 1.8 V | -0.3 | | 0.63 | |
| | | I/O type 5, 9, 11 | VCC_INTF = 2.5 V | -0.3 | | 0.7 | |
| | | I/O type 12, 13 | VCC_FLSH = 2.5 V | -0.3 | | 0.7 | |
| | | I/O type 5, 9, 11 | VCC_INTF = 3.3 V | -0.3 | | 0.8 | |
| I/O type 12, 13 | VCC_FLSH = 3.3 V | -0.3 | | 0.8 | | | |
| V _{OH} | High-level output voltage | I/O type 1, 2, 3, 6, 8 | VCC18 = 1.8 V | 1.35 | | | V |
| | | I/O type 5, 9, 11 | VCC_INTF = 1.8 V | 1.35 | | | |
| | | I/O type 12, 13 | VCC_FLSH = 1.8 V | 1.35 | | | |
| | | I/O type 5, 9, 11 | VCC_INTF = 2.5 V | 1.7 | | | |
| | | I/O type 12, 13 | VCC_FLSH = 2.5 V | 1.7 | | | |
| | | I/O type 5, 9, 11 | VCC_INTF = 3.3 V | 2.4 | | | |
| I/O type 12, 13 | VCC_FLSH = 3.3 V | 2.4 | | | | | |
| V _{OL} | Low-level output voltage | I ² C buffer (I/O type 7) | VCC_INTF > 2 V | | | 0.4 | V |
| | | I ² C buffer (I/O type 7) | VCC_INTF < 2 V | | | 0.2 × VCC_INTF | |
| | | I/O type 1, 2, 3, 6, 8 | VCC18 = 1.8 V | | | 0.45 | |
| | | I/O type 5, 9, 11 | VCC_INTF = 1.8 V | | | 0.45 | |
| | | I/O type 12, 13 | VCC_FLSH = 1.8 V | | | 0.45 | |
| | | I/O type 5, 9, 11 | VCC_INTF = 2.5 V | | | 0.7 | |
| | | I/O type 12, 13 | VCC_FLSH = 2.5 V | | | 0.7 | |
| | | I/O type 5, 9, 11 | VCC_INTF = 3.3 V | | | 0.4 | |
| I/O type 12, 13 | VCC_FLSH = 3.3 V | | | 0.4 | | | |

over operating free-air temperature range (unless otherwise noted)

| PARAMETER ⁽¹⁾ | | TEST CONDITIONS ⁽²⁾ | MIN | TYP | MAX | UNIT |
|--------------------------|--|--------------------------------------|------------------|------|-----|------|
| I_{OH} | High-level output current ⁽⁵⁾ | I/O type 2, 4 | VCC18 = 1.8 V | 2 | | mA |
| | | I/O type 5 | VCC_INTF = 1.8 V | 2 | | |
| | | I/O type 1 | VCC18 = 1.8 V | 3.5 | | |
| | | I/O type 9 | VCC_INTF = 1.8 V | 3.5 | | |
| | | I/O type 13 | VCC_FLSH = 1.8 V | 3.5 | | |
| | | I/O type 3 | VCC18 = 1.8 V | 10.6 | | |
| | | I/O type 5 | VCC_INTF = 2.5 V | 5.4 | | |
| | | I/O type 9, 13 | VCC_INTF = 2.5 V | 10.8 | | |
| | | I/O type 13 | VCC_FLSH = 2.5 V | 10.8 | | |
| | | I/O type 5 | VCC_INTF = 3.3 V | 7.8 | | |
| | | I/O type 9 | VCC_INTF = 3.3 V | 15 | | |
| | | I/O type 13 | VCC_FLSH = 3.3 V | 15 | | |
| I_{OL} | Low-level output current ⁽⁶⁾ | I ² C buffer (I/O type 7) | | 3 | | mA |
| | | I/O type 2, 4 | VCC18 = 1.8 V | 2.3 | | |
| | | I/O type 5 | VCC_INTF = 1.8 V | 2.3 | | |
| | | I/O type 1 | VCC18 = 1.8 V | 4.6 | | |
| | | I/O type 9 | VCC_INTF = 1.8 V | 4.6 | | |
| | | I/O type 13 | VCC_FLSH = 1.8 V | 4.6 | | |
| | | I/O type 3 | VCC18 = 1.8 V | 13.9 | | |
| | | I/O type 5 | VCC_INTF = 2.5 V | 5.2 | | |
| | | I/O type 9 | VCC_INTF = 2.5 V | 10.4 | | |
| | | I/O type 13 | VCC_FLSH = 2.5 V | 10.4 | | |
| | | I/O type 5 | VCC_INTF = 3.3 V | 4.4 | | |
| | | I/O type 9 | VCC_INTF = 3.3 V | 8.9 | | |
| | | I/O type 13 | VCC_FLSH = 3.3 V | 8.9 | | |

over operating free-air temperature range (unless otherwise noted)

| PARAMETER ⁽¹⁾ | | TEST CONDITIONS ⁽²⁾ | MIN | TYP | MAX | UNIT | |
|--------------------------|---------------------------------------|--|--|-----|-----|------|----|
| I _{oz} | High-impedance leakage current | I ² C buffer (I/O type 7) | V _{I²C buffer} < 0.1 × VCC_INTF or V _{I²C buffer} > 0.9 × VCC_INTF | -10 | | 10 | μA |
| | | I/O type 1, 2, 3, 6, 8 | VCC18 = 1.8 V | -10 | | 10 | |
| | | I/O type 5, 9, 11 | VCC_INTF = 1.8 V | -10 | | 10 | |
| | | I/O type 12, 13 | VCC_FLSH = 1.8 V | -10 | | 10 | |
| | | I/O type 5, 9, 11 | VCC_INTF = 2.5 V | -10 | | 10 | |
| | | I/O type 12, 13 | VCC_FLSH = 2.5 V | -10 | | 10 | |
| | | I/O type 5, 9, 11 | VCC_INTF = 3.3 V | -10 | | 10 | |
| | | I/O type 12, 13 | VCC_FLSH = 3.3 V | -10 | | 10 | |
| C _i | Input capacitance (including package) | I ² C buffer (I/O type 7) | | | | 5 | pF |
| | | I/O type 1, 2, 3, 6, 8 | VCC18 = 1.8 V | 2.6 | | 3.5 | |
| | | I/O type 5, 9, 11 | VCC_INTF = 1.8 V | 2.6 | | 3.5 | |
| | | I/O type 12, 13 | VCC_FLSH = 1.8 V | 2.6 | | 3.5 | |
| | | I/O type 5, 9, 11 | VCC_INTF = 2.5 V | 2.6 | | 3.5 | |
| | | I/O type 12, 13 | VCC_FLSH = 2.5 V | 2.6 | | 3.5 | |
| | | I/O type 5, 9, 11 | VCC_INTF = 3.3 V | 2.6 | | 3.5 | |
| | | I/O type 12, 13 | VCC_FLSH = 3.3 V | 2.6 | | 3.5 | |
| | | Sub-LVDS – DMD high speed (I/O type 4) | VCC18 = 1.8 V | | | | |

- (1) The I/O type refers to the type defined in [Table 5-11](#).
- (2) Test conditions that define a value for VCC18, VCC_INTF, or VCC_FLSH show the nominal voltage that the specified I/O's supply reference is set to.
- (3) I/O is high voltage tolerant; that is, if VCC_INTF = 1.8 V, the input is 3.3-V tolerant, and if VCC_INTF = 3.3 V, the input is 5-V tolerant.
- (4) Controller pins CMP_OUT, PARKZ, RESETZ, and GPIO_00 through GPIO_19 have slightly varied V_{IH} and V_{IL} range from other 1.8-V I/O.
- (5) At a high level output signal, the given I/O will be able to output at least the minimum current specified.
- (6) At a low level output signal, the given I/O will be able to sink at least the minimum current specified.

6.7 Internal Pullup and Pulldown Electrical Characteristics

over operating free-air temperature (unless otherwise noted)⁽²⁾

| INTERNAL PULLUP AND PULLDOWN RESISTOR CHARACTERISTICS | | TEST CONDITIONS ⁽¹⁾ | MIN | MAX | UNIT |
|---|--|--------------------------------|-----|-----|------|
| Weak pullup resistance | | VCCIO = 3.3 V | 29 | 63 | kΩ |
| | | VCCIO = 2.5 V | 38 | 90 | |
| | | VCCIO = 1.8 V | 56 | 148 | |
| Weak pulldown resistance | | VCCIO = 3.3 V | 30 | 72 | kΩ |
| | | VCCIO = 2.5 V | 36 | 101 | |
| | | VCCIO = 1.8 V | 52 | 167 | |

- (1) The resistance is dependent on VCCIO, the pin's supply reference (see a given pins supply reference in [Table 5-11](#)).
- (2) An external 8-kΩ pullup or pulldown (if needed) would work for any voltage condition to correctly pull enough to override any associated internal pullups or pulldowns.

6.8 DMD Sub-LVDS Interface Electrical Characteristics

over operating free-air temperature range (unless otherwise noted)

| PARAMETER | TEST CONDITIONS | MIN | TYP | MAX | UNIT |
|-----------------------------|---|-------|-------|-------|----------|
| V_{CM} | Common mode voltage | 0.8 | 0.9 | 1.0 | V |
| $V_{CM}(\Delta_{pp})^{(1)}$ | V_{CM} change peak-to-peak (during switching) | | | 75 | mV |
| $V_{CM}(\Delta_{ss})^{(1)}$ | V_{CM} change steady state | -10 | | 10 | mV |
| $ V_{OD} ^{(2)}$ | Differential output voltage magnitude | 170 | 250 | 350 | mV |
| $V_{OD}(\Delta)$ | V_{OD} change (between logic states) | -10 | | 10 | mV |
| V_{OH} | Single-ended output voltage high | 0.825 | 1.025 | 1.175 | V |
| V_{OL} | Single-ended output voltage low | 0.625 | 0.775 | 0.975 | V |
| T_{Xterm} | Internal differential termination | 80 | 100 | 120 | Ω |
| T_{Xload} | 100- Ω differential PCB trace (50- Ω transmission lines) | 0.5 | | 6 | in |

- See Figure 6-1.
- V_{OD} is the differential voltage measured across a 100- Ω termination resistance connected directly between the transmitter differential pins. $V_{OD} = V_P - V_N$, where P and N are the differential output pins. $|V_{OD}|$ is the magnitude of the peak-to-peak voltage swing across the P and N output pins (see Figure 6-2). V_{CM} cancels out between signals when measured differentially, thus the reason V_{OD} swings relative to zero.

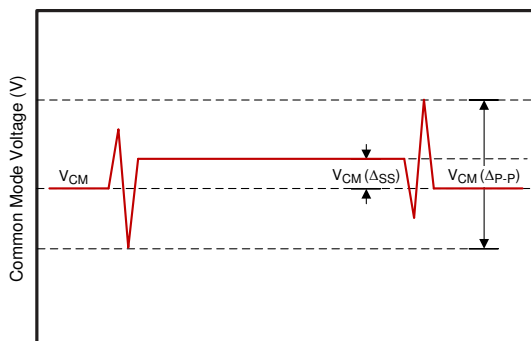
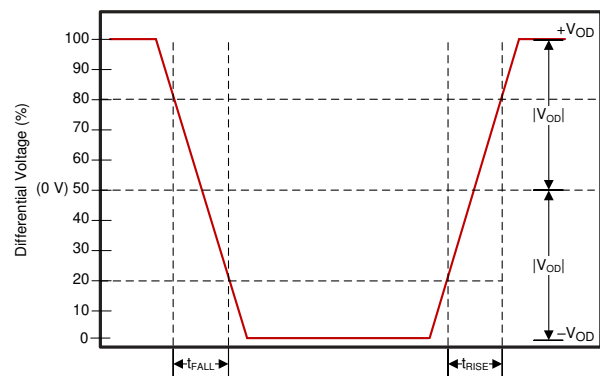


Figure 6-1. Common Mode Voltage



V_{CM} is removed when the signals are viewed differentially.

Figure 6-2. Differential Output Signal

6.9 DMD Low-Speed Interface Electrical Characteristics

over operating free-air temperature range (unless otherwise noted)

| PARAMETER ⁽³⁾ | | TEST CONDITIONS | MIN | TYP | MAX | UNIT |
|-----------------------------|--|--|-----------------------|-----------------------|-----------------------|------|
| $V_{OH(DC)}$ | DC output high voltage for DMD_LS_WDATA and DMD_LS_CLK | | $0.7 \times V_{CC18}$ | | | V |
| $V_{OL(DC)}$ | DC output low voltage for DMD_LS_WDATA and DMD_LS_CLK | | | | $0.3 \times V_{CC18}$ | V |
| $V_{OH(AC)}$ ⁽¹⁾ | AC output high voltage for DMD_LS_WDATA and DMD_LS_CLK | | $0.8 \times V_{CC18}$ | $V_{CC18} + 0.5$ | | V |
| $V_{OL(AC)}$ ⁽²⁾ | AC output low voltage for DMD_LS_WDATA and DMD_LS_CLK | | -0.5 | $0.2 \times V_{CC18}$ | | V |
| Slew rate | DMD_LS_WDATA and DMD_LS_CLK | $V_{OL(DC)}$ to $V_{OH(AC)}$ for rising edge and $V_{OH(DC)}$ to $V_{OL(AC)}$ for falling edge | 1.0 | | 3.0 | V/ns |
| | DMD_DEN_ARSTZ | $V_{OL(AC)}$ to $V_{OH(AC)}$ for rising edge | 0.25 | | | |
| | DMD_LS_RDATA | | 0.5 | | | |

- $V_{OH(AC)}$ maximum applies to overshoot. When the DMD_LS_WDATA and DMD_LS_CLK lines include a proper 43- Ω series termination resistor, the DMD operates within the LPSDR input AC specifications.
- $V_{OL(AC)}$ minimum applies to undershoot. When the DMD_LS_WDATA and DMD_LS_CLK lines include a proper 43- Ω series termination resistor, the DMD operates within the LPSDR input AC specifications.
- See [Figure 6-3](#) for DMD_LS_CLK, and DMD_LS_WDATA rise and fall times. See [Figure 6-4](#) for DMD_DEN_ARSTZ rise and fall times.

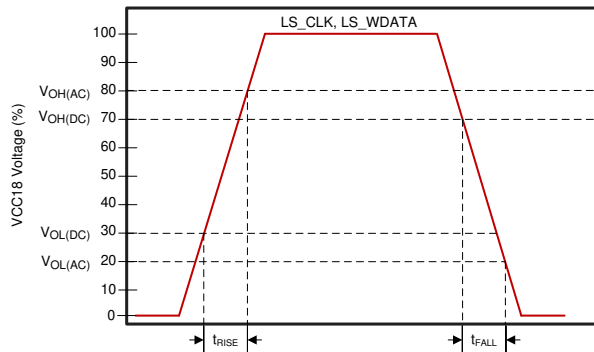


Figure 6-3. LS_CLK and LS_WDATA Slew Rate

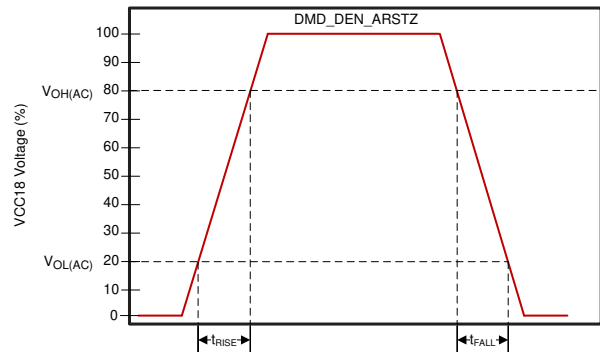


Figure 6-4. DMD_DEN_ARSTZ Slew Rate

6.10 System Oscillator Timing Requirements

| | | MIN | NOM | MAX | UNIT |
|------------|--|---|--------|--------|------|
| f_{clk} | Clock frequency, MOSC (primary oscillator clock) ⁽¹⁾ | 23.998 | 24.000 | 24.002 | MHz |
| t_c | Cycle time, MOSC (clock period) ⁽¹⁾ | See Figure 6-5 | | 41.670 | ns |
| $t_{w(H)}$ | Pulse duration as percent of t_c ⁽²⁾ , MOSC, high | 50% to 50% reference points (signal) | | 40% | |
| $t_{w(L)}$ | Pulse duration as percent of t_c ⁽²⁾ , MOSC, low | 50% to 50% reference points (signal) | | 40% | |
| t_t | Transition time ⁽²⁾ , MOSC | 20% to 80% reference points (rising signal) 80% to 20% reference points (falling signal) | | 10 | ns |
| t_{jp} | Long-term, peak-to-peak, period jitter ⁽²⁾ , MOSC (that is the deviation in period from ideal period due solely to high frequency jitter) | | | 2% | |

- (1) The frequency accuracy for MOSC is ± 200 PPM. This tolerance range includes impact to accuracy due to aging, temperature, and trim sensitivity. The MOSC input does not support spread spectrum clock spreading.
- (2) Applies only when driven by an external digital oscillator.

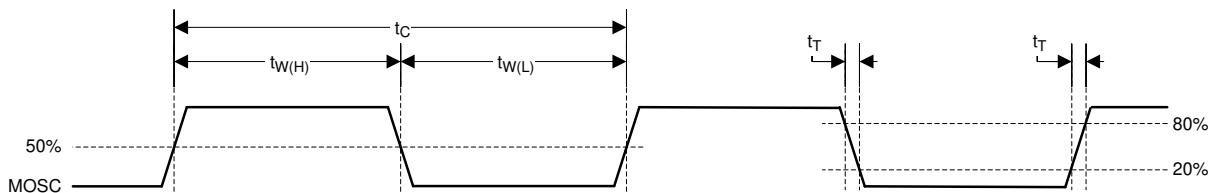


Figure 6-5. System Oscillators

6.11 Power Supply and Reset Timing Requirements

| | | MIN | MAX | UNIT |
|------------|--|--------------------------------------|-----|---------|
| $t_{w(L)}$ | Pulse duration, active low, RESETZ | 50% to 50% reference points (signal) | | μ s |
| t_r | Rise time, RESETZ ⁽¹⁾ | 20% to 80% reference points (signal) | | μ s |
| t_f | Fall time, RESETZ ⁽¹⁾ | 80% to 20% reference points (signal) | | μ s |
| t_{rise} | Rise time, VDD (during VDD ramp up at turn-on) | 0.3 V to 1.045 V (VDD) | | ms |

- (1) For more information on RESETZ, see [Section 5](#).

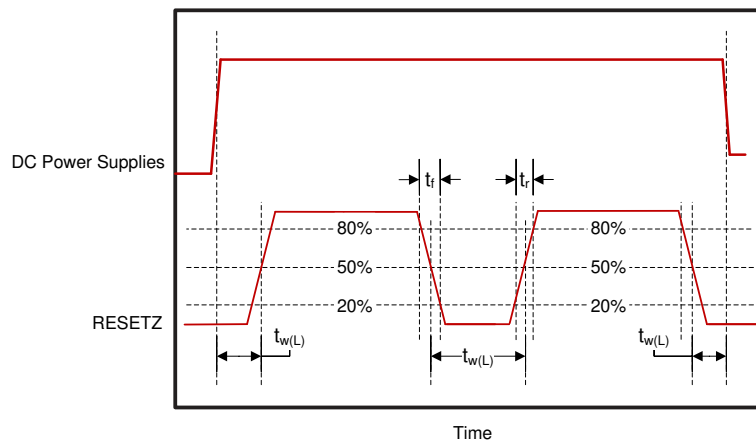


Figure 6-6. Power-Up and Power-Down RESETZ Timing

6.12 Parallel Interface Frame Timing Requirements

See [Section 11.1.3](#) for additional information

| | | | MIN | MAX | UNIT |
|--------------|--|----------------------|--------------------|-----|-------|
| t_{p_vsw} | Pulse duration – default VSYNC_WE high | 50% reference points | 1 | | lines |
| t_{p_vbp} | Vertical back porch (VBP) – time from the active edge of VSYNC_WE to the active edge of HSYNC_CS for the first active line ⁽¹⁾ | 50% reference points | 2 | | lines |
| t_{p_vfp} | Vertical front porch (VFP) – time from the active edge of the HSYNC_CS following the last active line in a frame to the active edge of VSYNC_WE ⁽¹⁾ | 50% reference points | 1 | | lines |
| t_{p_tvb} | Total vertical blanking – the sum of VBP and VFP ($t_{p_vbp} + t_{p_vfp}$) | 50% reference points | See ⁽¹⁾ | | lines |
| t_{p_hsw} | Pulse duration – default HSYNC_CS high | 50% reference points | 4 | 128 | PCLKs |
| t_{p_hbp} | Horizontal back porch (HBP) – time from the active edge of HSYNC_CS to the rising edge of DATAEN_CMD | 50% reference points | 4 | | PCLKs |
| t_{p_hfp} | Horizontal front porch (HFP) – time from the falling edge of DATAEN_CMD to the active edge of HSYNC_CS | 50% reference points | 8 | | PCLKs |

- (1) The minimum total vertical blanking is defined by the following equation: $t_{p_tvb}(\min) = 6 + [8 \times \text{Max}(1, \text{Source_ALPF} / \text{DMD_ALPF})]$ lines
 where:
- SOURCE_ALPF = Input source active lines per frame
 - DMD_ALPF = Actual DMD used lines per frame supported

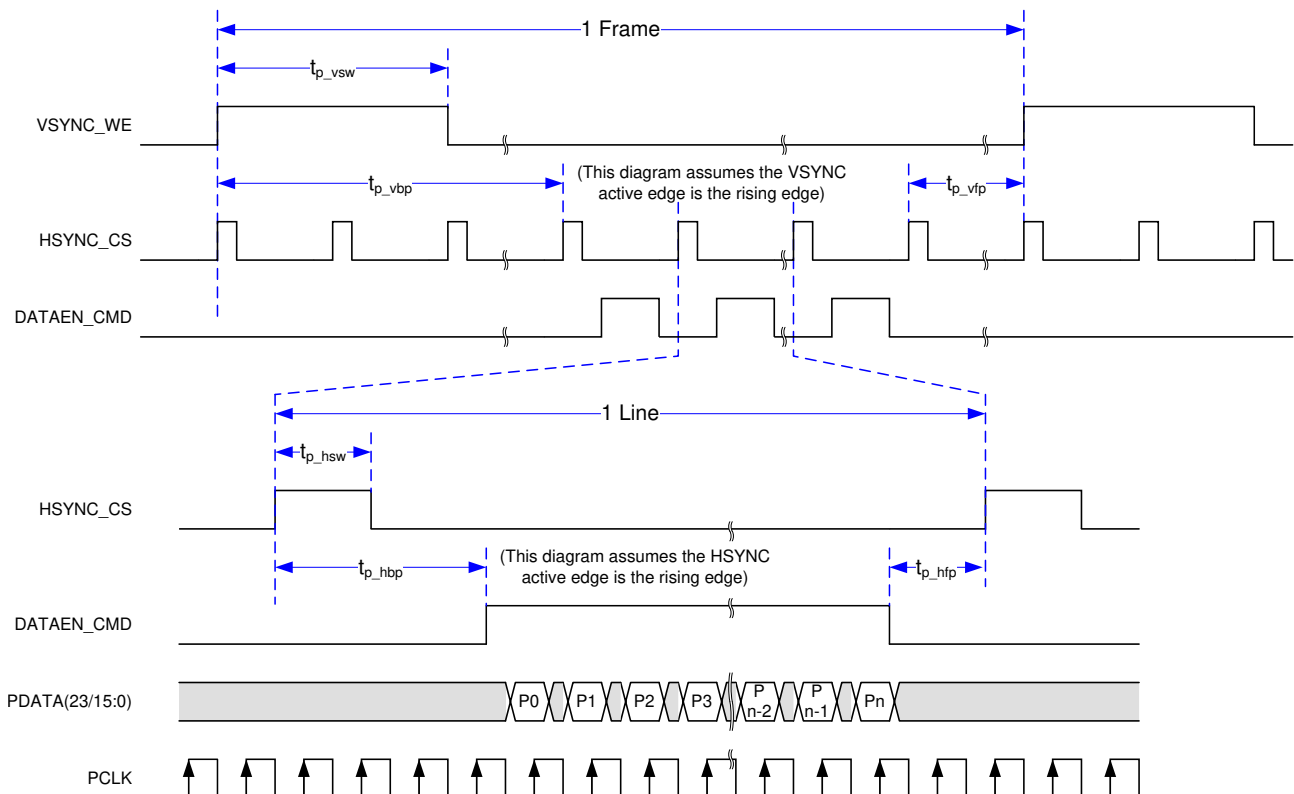


Figure 6-7. Parallel Interface Frame Timing

6.13 Parallel Interface General Timing Requirements

| | | | MIN | MAX | UNIT |
|-------------------------|---|---|------|---------|------|
| f_{clock} | PCLK frequency | | 1.0 | 155.0 | MHz |
| $t_{\text{p_clkper}}$ | PCLK period | 50% reference points | 6.45 | 1000 | ns |
| $t_{\text{p_clkjit}}$ | PCLK jitter | Max f_{clock} | | See (1) | |
| $t_{\text{p_wh}}$ | PCLK pulse duration high | 50% reference points | 2.43 | | ns |
| $t_{\text{p_wl}}$ | PCLK pulse duration low | 50% reference points | 2.43 | | ns |
| $t_{\text{p_su}}$ | Setup time – HSYNC_CS, DATAEN_CMD, PDATA(23:0) valid before the active edge of PCLK | 50% reference points | 0.9 | | ns |
| $t_{\text{p_h}}$ | Hold time – HSYNC_CS, DATAEN_CMD, PDATA(23:0) valid after the active edge of PCLK | 50% reference points | 0.9 | | ns |
| t_t | Transition time – all signals | 20% to 80% reference points (rising signal) 80% to 20% reference points (falling signal) | 0.2 | 2.0 | ns |
| $t_{\text{setup, 3DR}}$ | This is the setup time with respect to VSYNC(2) | 50% reference points | 1.0 | | ms |
| $t_{\text{hold, 3DR}}$ | This is the hold time with respect VSYNC(3) | 50% reference points | 1.0 | | ms |

- (1) Calculate clock jitter (in ns) using this formula: $\text{Jitter} = [1 / f_{\text{clock}} - 5.76 \text{ ns}]$. Setup and hold times must be met even with clock jitter.
- (2) In other words, the 3DR signal must change at least 1.0 ms before VSYNC changes.
- (3) In other words, the 3DR signal must not change for at least 1.0 ms after VSYNC changes.

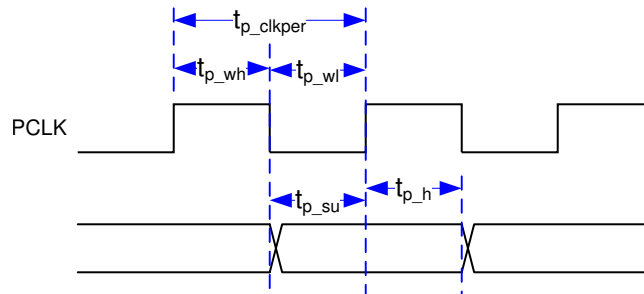


Figure 6-8. Parallel Interface Pixel Timing

6.14 BT656 Interface General Timing Requirements

The DLPC34xx controller input interface supports the industry standard BT.656 parallel video interface. See the appropriate ITU-R BT.656 specification for detailed interface timing requirements.⁽²⁾

| | | MIN | MAX | UNIT | |
|-----------------|--|---|--------------------|------|----|
| f_{cll} | PCLK frequency | 1.0 | 33.5 | MHz | |
| t_{p_clkper} | PCLK period | 50% reference points | 29.85 | 1000 | ns |
| t_{p_clkjit} | PCLK jitter | Max f_{clock} | See ⁽¹⁾ | | |
| t_{p_wh} | PCLK pulse duration high | 50% reference points | 10.0 | ns | |
| t_{p_wl} | PCLK pulse duration low | 50% reference points | 10.0 | ns | |
| t_{p_su} | Setup time – PDATA(7:0) before the active edge of PCLK | 50% reference points | 3.0 | ns | |
| t_{p_h} | Hold time – PDATA(7:0) after the active edge of PCLK | 50% reference points | 0.9 | ns | |
| t_t | Transition time – all signals | 20% to 80% reference points (rising signal) 80% to 20% reference points (falling signal) | 0.2 | 3.0 | ns |

- Calculate clock jitter (in ns) using this formula: Jitter = $[1 / f_{clock} - 5.76 \text{ ns}]$. Clock jitter must maintain setup and hold times. BT.656 data bits must be mapped to the DLPC34xx PDATA bus as shown in Figure 6-9 shows BT.656 bus mode YCbCr 4:2:2 source PDATA (23:0) mapping.
- The BT.656 interface accepts 8-bits per color, 4:2:2 YCbCr data encoded per the industry standard through PDATA(7:0) on the active edge of PCLK. See Figure 6-9.

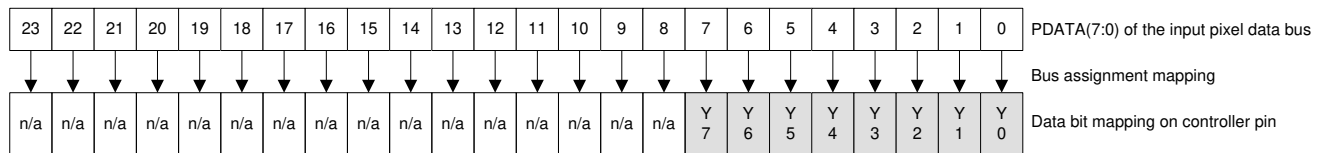


Figure 6-9. BT.656 Interface Mode Bit Mapping

6.15 DSI Host Timing Requirements

These timing requirements describe specific host minimum values that are higher than those specified in the MIPI standards. It is critical for proper operation that the host meet these minimum timing requirements for specified MIPI parameters. The decoded DSI data must also follow all Section 6.12.

| | | MIN | MAX | UNIT |
|--------------------------------|--|---|--------------------|-------|
| Clock lane | Frequency | 80 | 235 | MHz |
| Data lane | Effective data rate | 160 | 470 | Mbps |
| Number of data lanes | Selectable | 1 | 4 | lanes |
| $t_{HS-PREPARE} + t_{HS-ZERO}$ | During a LP to HS transition, the time that the transmitter drives the HS-0 state prior to transmitting the synchronization sequence | 80-MHz to 94-MHz HS clock | 565 | ns |
| | | 95-MHz to 235-MHz HS clock ⁽¹⁾ | 465 ⁽²⁾ | |
| $t_{HS-SETTLE}$ | Time interval during which the HS receiver ignores any data lane HS transitions, starting from the beginning of $T_{HS-PREPARE}$; the HS receiver ignores any data lane transitions before the minimum value, and responds to any data lane transitions after the maximum value | 80-MHz to 94-MHz HS clock | 565 ⁽³⁾ | ns |
| | | 95-MHz to 235-MHz HS clock | 465 ⁽³⁾ | |

- Example: At 172 MHz and $t_{HS-PREPARE} = 51.46 \text{ ns} \rightarrow 51.46 \text{ ns} + t_{HS-ZERO} \geq 465 \text{ ns}$. Therefore $t_{HS-ZERO} \geq 413.54 \text{ ns}$.
- Minimum values are higher than those required by the MIPI standard. $t_{HS-PREPARE}$ must be within the MIPI specified range.
- Maximum values are higher than those required by the MIPI standard.

6.16 Flash Interface Timing Requirements

The DLPC34xx flash memory interface consists of a SPI flash serial interface with a programmable clock rate. The DLPC34xx can support 1- to 128-Mb flash memories. (2) (3) (4)

| | | | MIN | MAX | UNIT |
|------------------------|--|---|------|------|------|
| f_{clock} | SPI_CLK frequency | See (1) | 1.4 | 36.0 | MHz |
| $t_{\text{p_clkper}}$ | SPI_CLK period | 50% reference points | 27.8 | 704 | ns |
| $t_{\text{p_wh}}$ | SPI_CLK pulse duration high | 50% reference points | 352 | | ns |
| $t_{\text{p_wl}}$ | SPI_CLK pulse duration low | 50% reference points | 352 | | ns |
| t_t | Transition time – all signals | 20% to 80% reference points (rising signal) 80% to 20% reference points (falling signal) | 0.2 | 3.0 | ns |
| $t_{\text{p_su}}$ | Setup time – SPI_DIN valid before SPI_CLK falling edge | 50% reference points | 10.0 | | ns |
| $t_{\text{p_h}}$ | Hold time – SPI_DIN valid after SPI_CLK falling edge | 50% reference points | 0.0 | | ns |
| $t_{\text{p_clqv}}$ | SPI_CLK clock falling edge to output valid time – SPI_DOUT and SPI_CSZ | 50% reference points | | 1.0 | ns |
| $t_{\text{p_clqx}}$ | SPI_CLK clock falling edge output hold time – SPI_DOUT and SPI_CSZ | 50% reference points | -3.0 | 3.0 | ns |

- (1) This range include the ± 200 ppm of the external oscillator (but no jitter).
- (2) Standard SPI protocol is to transmit data on the falling edge of SPI_CLK and capture data on the rising edge. The DLPC34xx does transmit data on the falling edge, but it also captures data on the falling edge rather than the rising edge. This process provides support for SPI devices with long clock-to-Q timing. DLPC34xx hold capture timing has been set to facilitate reliable operation with standard external SPI protocol devices.
- (3) With the above output timing, DLPC34xx provides the external SPI device 8.2-ns input set-up and 8.2-ns input hold, relative to the rising edge of SPI_CLK.
- (4) For additional requirements of the external flash device view the [Section 7.3.3.1](#) section.

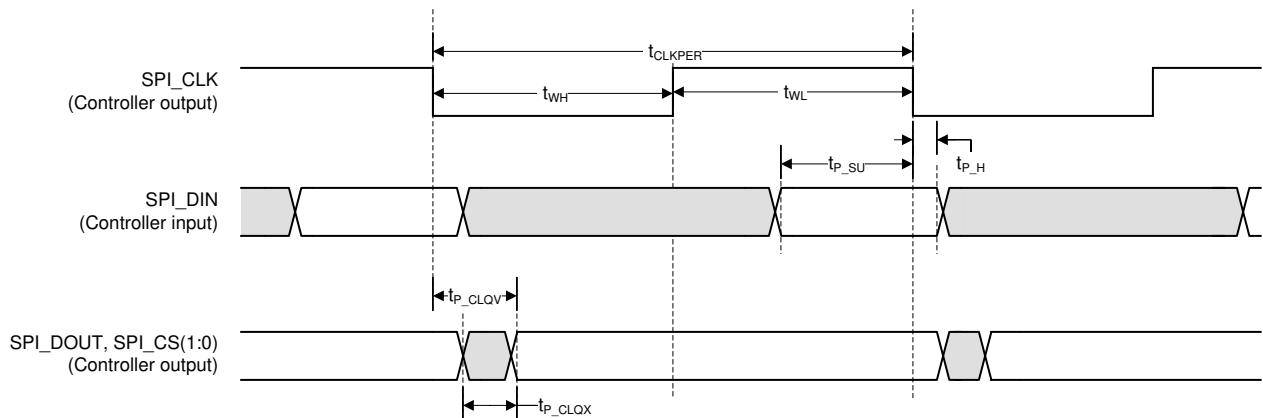


Figure 6-10. Flash Interface Timing

6.17 Other Timing Requirements

| | | MIN | MAX | UNIT |
|--|-----------------------------|-----|-----|------|
| $t_{rise, all}^{(1) (2)}$ | 20% to 80% reference points | | 10 | ns |
| $t_{fall, all}^{(1) (2)}$ | 80% to 20% reference points | | 10 | ns |
| $t_{rise, PARKZ}^{(2)}$ | 20% to 80% reference points | | 150 | ns |
| $t_{fall, PARKZ}^{(2)}$ | 80% to 20% reference points | | 150 | ns |
| $t_w, GPIO_08$ (PROJ_ON) pulse width low ⁽³⁾ | | 200 | | ms |
| I ² C baud rate | | | 100 | kHz |

(1) Unless noted elsewhere, the following signal transition times are for all DLPC34xx signals.

(2) This is the recommended signal transition time to avoid input buffer oscillations.

(3) When the controller is turned off by setting PROJ_ON low, PROJ_ON must not be brought high again for at least 200 ms. View [Section 9.3](#) for additional requirements.

6.18 DMD Sub-LVDS Interface Switching Characteristics

over operating free-air temperature range (unless otherwise noted)

| PARAMETER | | TEST CONDITIONS | MIN | TYP | MAX | UNIT |
|--------------|--------------------------------|-----------------|-----|------|-----|------|
| $t_R^{(1)}$ | Differential output rise time | | | | 250 | ps |
| $t_F^{(1)}$ | Differential output fall time | | | | 250 | ps |
| t_{switch} | DMD HS clock switching rate | | | 1200 | | Mbps |
| f_{clock} | DMD HS clock frequency | | | 600 | | MHz |
| DCout | DMD HS clock output duty cycle | | 45% | 50% | 55% | |

(1) Rise and fall times are defined for the differential V_{OD} signal as shown in [Figure 6-2](#).

6.19 DMD Parking Switching Characteristics

See [\(2\)](#)

| PARAMETER | | TEST CONDITIONS | MIN | TYP | MAX | UNIT |
|------------------|---------------------------------|-----------------|-----|-----|-----|---------|
| t_{park} | Normal park time ⁽¹⁾ | | | | 20 | ms |
| $t_{fast\ park}$ | Fast park time ⁽³⁾ | | | | 32 | μ s |

(1) Normal park time is defined as how long it takes the DLPC34xx controller to complete the parking of the DMD after it receives the normal park request (GPIO_08 goes low).

(2) The oscillator and power supplies must remain active for at least the duration of the park time. The power supplies must additionally be held on for a time after parking is completed to satisfy DMD requirements. See [Section 9.2](#) and the appropriate DMD or PMIC datasheet for more information.

(3) Fast park time is defined as how long it takes the DLPC34xx controller to complete the parking of the DMD after it receives the fast park request (PARKZ goes low).

6.20 Chipset Component Usage Specification

The DLPC3420 is a component of a DLP chipset. Reliable function and operation of the DLP chipset requires that it be used with all components (DMD, PMIC, and controller) of the applicable DLP chipset.

Table 6-1. DLPC3420 Supported DMDs and PMICs

| DLPC3420 DLP Chipset | |
|----------------------|----------|
| DMD | DLP160AP |
| PMIC | DLPA2000 |
| | DLPA2005 |

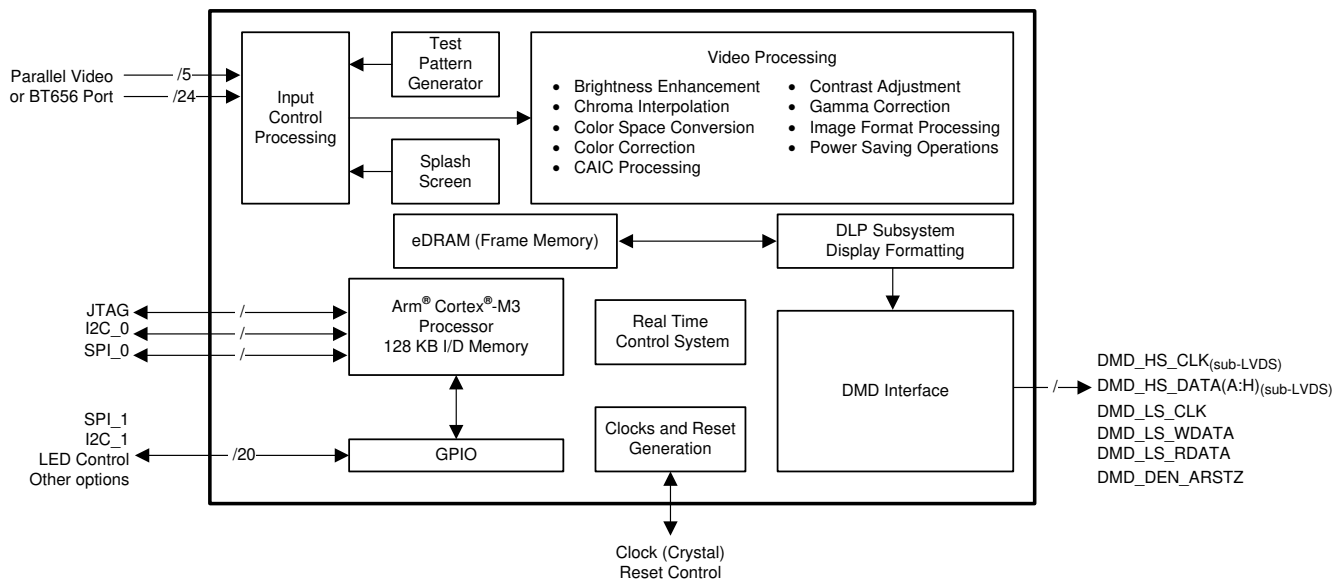
7 Detailed Description

7.1 Overview

The DLPC3420 part is a display controller for the DLP160AP (0.16 QnHD) DMD. The DLPC3420 controller is part of the chipset composed of the controller, DLP160AP (0.16 QnHD) DMD, and DLPA200x PMIC (which includes an LED driver). To ensure reliable operation of the DLP chipset, the DLPC34xx must always be used with the supported devices shown in [Table 6-1](#).

The DLPC34xx display controller provides interfaces along with data and image processing functions that are optimized for small form factor and power-constrained display applications. Applications include projection within mobile projectors, smart displays, smartphones, tablets, augmented reality glasses, mobile accessories, smart home displays, and Pico projectors. The DLPC3420 is not a front-end processor; therefore, standalone projectors must include a separate front-end chip to interface to the outside world (for example, a video decoder, HDMI receiver, or USB I/F chip).

7.2 Functional Block Diagram



7.3 Feature Description

7.3.1 Input Source Requirements

7.3.1.1 Supported Resolution and Frame Rates

Table 7-1. Supported Input Source Ranges^{(1) (2)}

| INTERFACE | FORMAT ⁽³⁾ | IMAGE TYPE | SOURCE RESOLUTION RANGE (pixels) | | | | FRAME RATE RANGE (Hz) |
|--------------------|--|------------|----------------------------------|-------------------------|-----------|-------------------------|-----------------------|
| | | | HORIZONTAL | | VERTICAL | | |
| | | | Landscape | Portrait ⁽⁴⁾ | Landscape | Portrait ⁽⁴⁾ | |
| Parallel | RGB888, YCrCb888, | 2D only | 320 | N/A | 180 | N/A | 48 to 60 |
| DSI ⁽⁵⁾ | RGB666, YCrCb666, RGB565, YCrCb565, YCrCb4:2:2 | 2D only | 320 | N/A | 180 | N/A | 48 to 60 |

- (1) The application must remain within specifications for all source interface parameters such as maximum clock rate and maximum line rate.
- (2) To achieve the ranges stated, the firmware must support the source parameters. Review the firmware release notes or contact TI to determine the latest available frame rate and input resolution support for a given firmware image.
- (3) Bits per pixel does not necessarily equal the number of data pins used on the DLPC34xx controller.
- (4) Rotation of the image into Portrait orientation is not supported for this chipset.
- (5) Applications may require up to four DSI lanes in order to fully utilize the available DSI bandwidth (and therefore achieve the maximum display rates and resolutions).

7.3.1.2 Parallel Interface

The parallel interface complies with standard graphics interface protocol, which includes the signals listed in [Table 7-2](#).

Table 7-2. Parallel Interface Signals

| SIGNAL | DESCRIPTION |
|------------|-------------------------------|
| VSYNC_WE | vertical sync |
| HSYNC_CS | horizontal sync |
| DATAEN_CMD | data valid |
| PDATA | 24-bit data bus |
| PCLK | pixel clock |
| PDM_CVS_TE | parallel data mask (optional) |

Note

VSYNC_WE must remain active at all times when using parallel RGB mode. When this signal is no longer active, the display sequencer stops and causes the LEDs to turn off.

The active edge of both sync signals are variable. The *Parallel Interface Frame Timing Requirements* section shows the relationship of these signals.

An optional parallel data mask signal (PDM_CVS_TE) allows periodic frame updates to be stopped without losing the displayed image. When active, PDM_CVS_TE acts as a data mask and does not allow the source image to be propagated to the display. A programmable PDM polarity parameter determines if it is active high or active low. PDM_CVS_TE defaults to active high. To disable the data mask function, tie PDM_CVS_TE to a logic low signal. PDM_CVS_TE must only change during vertical blanking.

The parallel interface supports six data transfer formats. They are as follows:

- 24-bit RGB888 or 24-bit YCbCr888 on a 24 data wire interface
- 18-bit RGB666 or 18-bit YCbCr666 on an 18 data wire interface
- 16-bit YCbCr 4:2:2 (standard sampling assumed to be Y0Cb0, Y1Cr0, Y2Cb2, Y3Cr2, Y4Cb4, Y5Cr4, ...)

The [Section 7.3.1.2.1](#) section shows the required PDATA(23:0) bus mapping for these six data transfer formats.

7.3.1.2.1 PDATA Bus – Parallel Interface Bit Mapping Modes

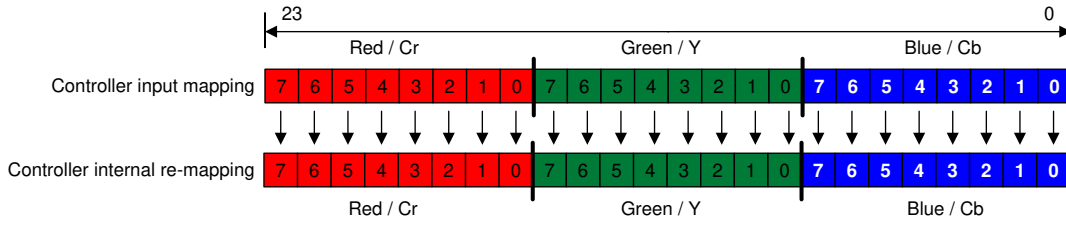


Figure 7-1. RGB-888 and YCbCr-888 I/O Mapping

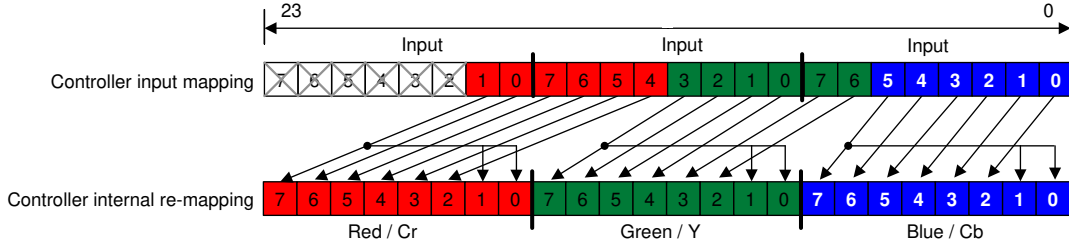


Figure 7-2. RGB-666 and YCbCr-666 I/O Mapping

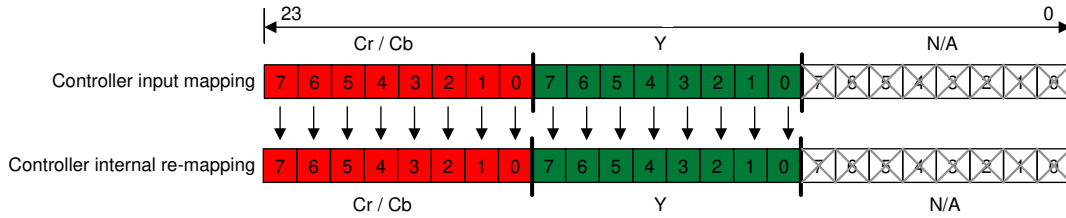


Figure 7-3. 16-Bit YCbCr-880 I/O Mapping

7.3.1.3 DSI Interface

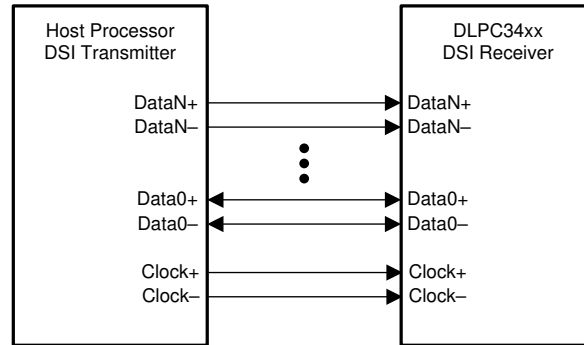
The DLPC34xx controller supports the industry standard DSI (Display Serial Interface) Type-3 LVDS video interface with up to four lanes. DSI is a source-synchronous, high-speed, low-power, low-cost physical layer. The DSI-PHY unit receives data when it operates in high-speed (HS) mode. The DSI-PHY unit receives and transmits data when it operates in low-power (LP) mode for unidirectional data lanes. Point-to-point lane interconnect can be used for either data or clock signal transmission. The high-speed receiver is a differential line receiver circuit. The low-power receiver is an unterminated, single-ended receiver circuit. [Figure 7-4](#) shows a high-level view of the DSI interface.

For a given frame rate, the DSI high-speed (HS) clock frequency must be fixed. If a different DSI clock frequency is ever needed (such as to support another frame rate), an I²C command must be sent to the controller with the updated HS clock frequency.

MIPI refers to the Mobile Industry Processor Interface standard.

Various DSI requirements and features of the DLPC34xx are as follows:

- compliant with the DSI-MIPI Specification for Display Serial Interface (V 1.02.00) except for those items noted in the DSI Host Timing Requirements table
- compliant with D-PHY standard MIPI Specification (V 1.0)
- MIPI DSI Type 3 architecture
- supports display resolutions shown in [Section 7.3.1.1](#)
- supports video mode (command mode not supported)
- MIPI DCSSM (Display Command SetSM) commands sent over DSI not supported (send commands via I²C instead)
- supports multiple packets per transmission
- supports trigger messages in the forward direction
- data lanes configurable from one to four channels
- EOT (End of Transfer) command is supported and must be enabled
- CRC (cyclic redundancy check) and ECC (error correction code) for header supported
 - CRC and ECC can be disabled
- checksum for long packets with error reporting (but no ECC)
- supports one virtual channel for video mode
- supports burst mode
- supports non-burst with sync pulses and with sync event
- BTA (bus turn-around) mode not supported and must be disabled in the DSI host processor
- LP mode is required during vertical blanking and vertical sync. LP mode is not supported between pixel lines (i.e. HS blanking must be used for horizontal blanking and horizontal sync)
- an active DSI HS clock is required during LP blanking



- one clock lane
- one bi-directional data lane (Data0)
- up to three additional uni-directional data lanes (Data1, Data2, and Data3)

Figure 7-4. DSI High Level View

The differential DSI clock lane (DCLKN and DCLKP) must be in the LP11 (Idle) state upon the de-assertion of RESETZ (zero-to-one transition) and must remain in this state until HOST_IRQ is de-asserted (one-to-zero transition) to ensure proper DSI initialization.

The controller requires differential data lane '0' (DD0N:DD0P) for DSI operation. The three remaining data lanes are optional depending on the desired input resolution and frame rate. Not all display resolutions and frame rates are supported without using all four data lanes.

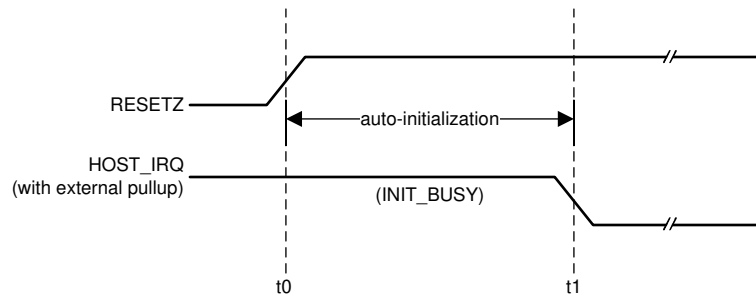
The state of GPIO (2:1) pins upon the de-assertion of RESETZ (zero-to-one transition) determines the number of DSI data lanes that are enabled for both LP and HS bus operation.

DSI supported data transfer formats are as follows:

- 24-bit RGB888 - each pixel uses 3 bytes
- 18-bit RGB666 - each pixel packed into 2 or more bytes
- 18-bit RGB666 - each pixel loosely packed into 3 bytes
- 16-bit 4:2:2 YCbCr - each pixel uses 2 bytes

7.3.2 Device Startup

- The HOST_IRQ signal is provided to indicate when the system has completed auto-initialization.
- While reset is applied, HOST_IRQ is tri-stated (an external pullup resistor pulls the line high).
- HOST_IRQ remains tri-stated (pulled high externally) until the boot process completes. While the signal is pulled high, this indicates that the controller is performing boot-up and auto-initialization.
- As soon as possible after the controller boots-up, the controller drives HOST_IRQ to a logic high state to indicate that the controller is continuing to perform auto-initialization (no real state changes occur on the external signal).
- The software sets HOST_IRQ to a logic low state at the completion of the auto-initialization process. At the falling edge of the signal, the initialization is complete.
- The DLPC34xx controller is ready to receive commands through I²C or accept video over the DSI or the parallel interface only after auto-initialization is complete.
- The controller initialization typically completes (HOST_IRQ goes low) within 500 ms of RESETZ being asserted. However, this time may vary depending on the software version and the contents of the user configurable auto initialization file.



t0: rising edge of RESETZ; auto-initialization begins
t1: falling edge of HOST_IRQ; auto-initialization is complete

Figure 7-5. HOST_IRQ Timing

7.3.3 SPI Flash

7.3.3.1 SPI Flash Interface

The DLPC34xx controller requires an external SPI serial flash memory device to store the firmware. Follow the below guidelines and requirements in addition to the requirements listed in the *Flash Interface Timing Requirements* section.

The controller supports a maximum flash size of 128 Mb (16 MB). See the DLPC34xx Validated SPI Flash Device Options table for example compatible flash options. The minimum required flash size depends on the size of the utilized firmware. The firmware size depends upon a variety of factors including the number of sequences, lookup tables, and splash images.

The DLPC34xx controller uses a single SPI interface that complies to industry standard SPI flash protocol. The device will begin accessing the flash at a nominal 1.42-MHz frequency before running at a nominal 30-MHz rate. The flash device must support these rates.

The controller has two independent SPI chip select (CS) control lines. Ensure that the chip select pin of the flash device is connects to SPI0_CSZ0 as the controller boot routine is executes from the device connected to chip select zero. The boot routine uploads program code from flash memory to program memory then transfers control to an auto-initialization routine within program memory.

The DLPC34xx is designed to support any flash device that is compatible with the modes of operation, features, and performance as defined in the Additional DLPC34xx SPI Flash Requirements table below [Table 7-3](#), [Table 7-4](#), and [Table 7-5](#).

Table 7-3. Additional DLPC34xx SPI Flash Requirements

| FEATURE | DLPC34xx REQUIREMENT |
|---|---|
| SPI interface width | Single |
| SPI polarity and phase settings | SPI mode 0 |
| Fast READ addressing | Auto-incrementing |
| Programming mode | Page mode |
| Page size | 256 B |
| Sector size | 4-KB sector |
| Block size | Any |
| Block protection bits | 0 = Disabled |
| Status register bit(0) | Write in progress (WIP), also called flash busy |
| Status register bit(1) | Write enable latch (WEN) |
| Status register bits(6:2) | A value of 0 disables programming protection |
| Status register bit(7) | Status register write protect (SRWP) |
| Status register bits(15:8) (that is expansion status byte) | Because the DLPC34xx controller supports only single-byte status register R/W command execution, it may not be compatible with flash devices that contain an expansion status byte. However, as long as the expansion status byte is considered optional in the byte 3 position and any write protection control in this expansion status byte defaults to unprotected, then the flash device is likely compatible with the DLPC34xx. |

The DLPC34xx controller is intended to support flash devices with program protection defaults of either enabled or disabled. The controller assumes the default is enabled and proceeds to disable any program protection as part of the boot process.

The DLPC34xx issues these commands during the boot process:

- A write enable (WREN) instruction to request write enable, followed by
- A read status register (RDSR) instruction (repeated as needed) to poll the write enable latch (WEL) bit
- After the write enable latch (WEL) bit is set, a write status register (WRSR) instruction that writes 0 to all 8 bits (this disables all programming protection)

Prior to each program or erase instruction, the DLPC34xx controller issues similar commands:

- A write enable (WREN) instruction to request write enable, followed by
- A read status register (RDSR) instruction (repeated as needed) to poll the write enable latch (WEL) bit
- After the write enable latch (WEL) bit is set, the program or erase instruction

Note that the flash device automatically clears the write enable status after each program and erase instruction.

[Table 7-4](#) and [Table 7-5](#) below list the specific instruction OpCode and timing compatibility requirements. The DLPC34xx controller does not adapt protocol or clock rate based on the flash type connected.

Table 7-4. SPI Flash Instruction OpCode and Access Profile Compatibility Requirements

| SPI FLASH COMMAND | BYTE 1 (OPCODE) | BYTE 2 | BYTE 3 | BYTE 4 | BYTE 5 | BYTE 6 |
|----------------------|-----------------|-----------|--------------------|-----------|------------------------|------------------------|
| Fast READ (1 output) | 0x0B | ADDRS(0) | ADDRS(1) | ADDRS(2) | dummy | DATA(0) ⁽¹⁾ |
| Read status | 0x05 | N/A | N/A | STATUS(0) | | |
| Write status | 0x01 | STATUS(0) | See ⁽²⁾ | | | |
| Write enable | 0x06 | | | | | |
| Page program | 0x02 | ADDRS(0) | ADDRS(1) | ADDRS(2) | DATA(0) ⁽¹⁾ | |
| Sector erase (4 KB) | 0x20 | ADDRS(0) | ADDRS(1) | ADDRS(2) | | |
| Chip erase | 0xC7 | | | | | |

- (1) Shows the first data byte only. Data continues.
(2) Access to a second (expansion) write status byte not supported by the DLPC34xx controller.

Table 7-5 below and the *Flash Interface Timing Requirements* section list the specific timing compatibility requirements for a DLPC34xx compatible flash device.

Table 7-5. SPI Flash Key Timing Parameter Compatibility Requirements

| SPI FLASH TIMING PARAMETER ^{(1) (2)} | SYMBOL | ALTERNATE SYMBOL | MIN | MAX | UNIT |
|---|------------|------------------|------------|-------------|------|
| Access frequency (all commands) | FR | f_c | ≤ 1.4 | ≥ 30.1 | MHz |
| Chip select high time (also called chip select deselect time) | t_{SHSL} | t_{CSH} | ≤ 200 | | ns |
| Output hold time | t_{CLQX} | t_{HO} | ≥ 0 | | ns |
| Clock low to output valid time | t_{CLQV} | t_v | | ≤ 11 | ns |
| Data in set-up time | t_{DVCH} | t_{DSU} | ≤ 5 | | ns |
| Data in hold time | t_{CHDX} | t_{DH} | ≤ 5 | | ns |

- (1) The timing values apply to the specification of the peripheral flash device, not the DLPC34xx controller. For example, the flash device minimum access frequency (FR) must be 1.4 MHz or less and the maximum access frequency must be 30.1 MHz or greater.
(2) The DLPC34xx does not drive the HOLD or WP (active low write protect) pins on the flash device, and thus these pins must be tied to a logic high on the PCB through an external pullup.

In order for the DLPC34xx controller to support 1.8-V, 2.5-V, or 3.3-V serial flash devices, the VCC_FLASH pin must be supplied with the corresponding voltage. The DLPC34xx Validated SPI Flash Device Options table contains a list of validated 1.8-V, 2.5-V, or 3.3-V compatible SPI serial flash devices supported by the DLPC34xx controller.

Table 7-6. DLPC34xx Validated SPI Flash Device Options^{(1) (2) (3)}

| DENSITY (Mb) | VENDOR | PART NUMBER | PACKAGE SIZE |
|---|----------|-------------------|----------------------|
| 1.8-V COMPATIBLE DEVICES | | | |
| 4 Mb | Winbond | W25Q40BWUXIG | 2 × 3 mm USON |
| 4 Mb | Macronix | MX25U4033EBAI-12G | 1.43 × 1.94 mm WLCSP |
| 8 Mb | Macronix | MX25U8033EBAI-12G | 1.68 × 1.99 mm WLCSP |
| 2.5- OR 3.3-V COMPATIBLE DEVICES | | | |
| 16 Mb | Winbond | W25Q16CLZPIG | 5 × 6 mm WSON |

- (1) The flash supply voltage must equal VCC_FLASH supply voltage on the DLPC34xx controller. Make sure to order the device that supports the correct supply voltage as multiple voltage options are often available.
(2) Numonyx (Micron) serial flash devices typically do not support the 4-KB sector size compatibility requirement for the DLPC34xx controller.
(3) The flash devices in this table have been formally validated by TI. Other flash options may be compatible with the DLPC34xx controller, but they have not been formally validated by TI.

7.3.3.2 SPI Flash Programming

The SPI pins of the flash can directly be driven for flash programming while the DLPC34xx controller I/Os are tri-stated. SPI0_CLK, SPI0_DOUT, and SPI0_CSZ0 I/O can be tri-stated by holding RESETZ in a logic low state while power is applied to the controller. The logic state of the SPI0_CSZ1 pin is not affected by this action. Alternatively, the DLPC34xx controller can program the SPI flash itself when commanded via I²C if a valid firmware image has already been loaded and the controller is operational.

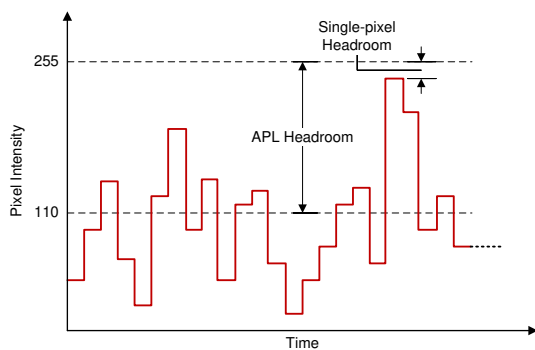
7.3.4 I²C Interface

Both of the DLPC34xx I²C interface ports support a 100-kHz baud rate. Because I²C interface transactions operate at the speed of the slowest device on the bus, there is no requirement to match the speed of all devices in the system.

7.3.5 Content Adaptive Illumination Control (CAIC)

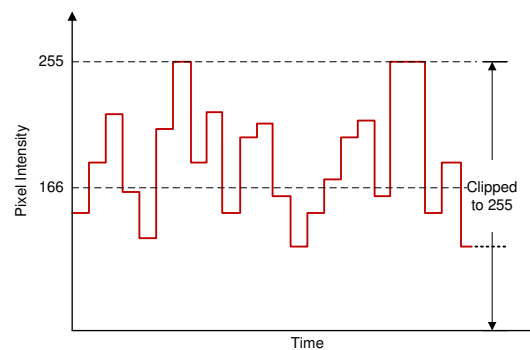
Content Adaptive Illumination control (CAIC) is part of the IntelliBright® suite of advanced image processing algorithms that adaptively enhances brightness and reduces power. In common real-world image content most pixels in the images are well below full scale for the R (red), G (green), and B (blue) digital channels input to the DLPC34xx. As a result of this, the average picture level (APL) for the overall image is also well below full scale, and the dynamic range for the collective set of pixel values is not fully used. CAIC takes advantage of the headroom between the source image APL and the top of the available dynamic range of the display system.

CAIC evaluates images on a frame-by-frame basis and derives three unique digital gains, one for each of the R, G, and B color channel. During image processing, CAIC applies each gain to all pixels in the associated color channel. The calculated gain is applied to all pixels in that channel so that the pixels as a group collectively shift upward and as close to full scale as possible. To prevent any image quality degradation, the gains are set at the point where just a few pixels in each color channel are clipped. The [Source Pixels for a Color Channel](#) and [Pixels for a Color Channel After CAIC Processing](#) figures below show an example of the application of CAIC for one color channel.



(1) APL = 110

Figure 7-6. Source Pixels for a Color Channel

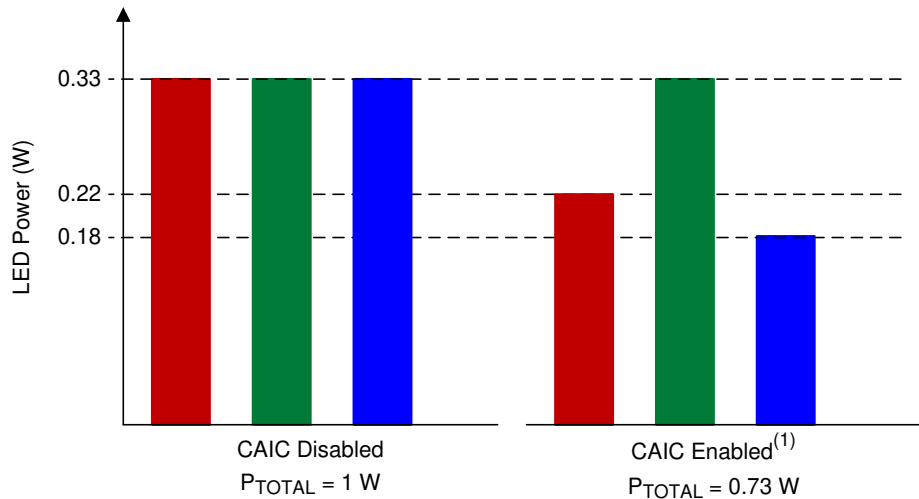


(1) APL = 166

(2) Channel gain = $166/110 = 1.51$

Figure 7-7. Pixels for a Color Channel After CAIC Processing

Above, [Figure 7-7](#) shows the gain that is applied to a color processing channel inside the DLPC34xx. Additionally, CAIC adjusts the power for the R, G, and B LED by commanding different LED currents. For each color channel of an individual frame, CAIC intelligently determines the optimal combination of digital gain and LED power. The user configurable CAIC settings heavily influence the amount of digital gain that is applied to a color channel and the LED power for that color.



(1) With CAIC enabled, if red and blue LEDs require less than nominal power for a given input image, the red and blue LED power will reduce.

Figure 7-8. CAIC Power Reduction Mode (for Constant Brightness)

As CAIC applies a digital gain to each color channel and adjusts the power to each LED, CAIC ensures the resulting color balance in the final image matches the target color balance for the projector system. Thus, the effective displayed white point of images is held constant by CAIC from frame to frame.

CAIC can be used to increase the overall image brightness while holding the total power for all LEDs constant, or CAIC can be used to hold the overall image brightness constant while decreasing LED power. In summary, CAIC has two primary modes of operation:

- Power reduction mode holds overall image brightness constant while reducing LED power
- Enhanced brightness mode holds overall LED power constant while enhancing image brightness

In power reduction mode, since the R, G, and B channels can be gained up by CAIC inside the DLPC34xx, the LED power can be reduced for any color channel until the brightness of the color on the screen is unchanged. Thus, CAIC can achieve an overall LED power reduction while maintaining the same overall image brightness as if CAIC was not used. [Figure 7-8](#) shows an example of LED power reduction by CAIC for an image where the red and blue LEDs can consume less power.

In enhanced brightness mode the R, G, and B channels can be gained up by CAIC with LED power generally being held constant. This results in an enhanced brightness with no power savings.

While there are two primary modes of operation described, the DLPC34xx actually operates within the extremes of pure power reduction mode and enhanced brightness mode. The user can configure which operating mode the DLPC34xx will more closely follow by adjusting the CAIC gain setting as described in the software programmer's guide.

In addition to the above functionality, CAIC also can be used as a tool with which FOFO (full-on full-off) contrast on a projection system can be improved. While operating in power reduction mode, the DLPC34xx reduces LED power as the intensity of the image content for each color channel decreases. This process will result in the LEDs operating at nominal settings with full-on content (a white screen) and reducing power output until the dimmest possible content (a black screen) is reached. In this latter case, the LEDs will be operating at minimum power output capacity and thus producing the minimum possible amount of off-state light. This optimization provided by CAIC will thereby improve FOFO contrast ratio. The given contrast ratio will further increase as nominal LED current (full-on state) is increased.

7.3.6 Test Point Support

The DLPC34xx test point output port, TSTPT_(7:0), provides selected system calibration and controller debug support. These test points are inputs when reset is applied. These test points are outputs when reset is released. The controller samples the signal state upon the release of system reset and then uses the captured value to configure the test mode until the next time reset is applied. Because each test point includes an internal pulldown resistor, external pullups must be used to modify the default test configuration.

The default configuration (b000) corresponds to the TSTPT_(2:0) outputs remaining tri-stated to reduce switching activity during normal operation. For maximum flexibility, a jumper to external pullup resistors is recommended for TSTPT_(2:0). The pullup resistors on TSTPT_(2:0) can be used to configure the controller for a specific mode or option. TI does not recommend adding pullup resistors to TSTPT_(7:3) due to potentially adverse effects on normal operation. For normal use TSTPT_(7:3) should be left unconnected. The test points are sampled only during a 0-to-1 transition on the RESETZ input, so changing the configuration after reset is released does not have any effect until the next time reset asserts and releases. [Table 7-7](#) describes the test mode selections for one programmable scenario defined by TSTPT_(2:0).

Table 7-7. Test Mode Selection Scenario Defined by TSTPT_(2:0)

| TSTPT OUTPUT VALUE ⁽¹⁾ | NO SWITCHING ACTIVITY | CLOCK DEBUG OUTPUT |
|-----------------------------------|-----------------------|---------------------|
| | TSTPT_(2:0) = 0b000 | TSTPT_(2:0) = 0b010 |
| TSTPT_0 | HI-Z | 60 MHz |
| TSTPT_1 | HI-Z | 30 MHz |
| TSTPT_2 | HI-Z | 0.7 to 22.5 MHz |
| TSTPT_3 | HI-Z | HIGH |
| TSTPT_4 | HI-Z | LOW |
| TSTPT_5 | HI-Z | HIGH |
| TSTPT_6 | HI-Z | HIGH |
| TSTPT_7 | HI-Z | 7.5 MHz |

(1) These are default output selections. Software can reprogram the selection at any time.

7.3.7 DMD Interface

The DLPC34xx controller DMD interface consists of one high-speed (HS), 1.8-V sub-LVDS, output-only interface and one low speed (LS), 1.8-V LVCMOS SDR interface with a typical fixed clock speed of 120 MHz.

7.3.7.1 Sub-LVDS (HS) Interface

Internal software selection allows the controller to support multiple DMD interface swap configurations. These options can improve board layout by remapping specific combinations of DMD interface lines to other DMD interface lines as needed. [Table 7-8](#) shows the four options available for the DLP160AP DMD.

Table 7-8. DLP160AP (0.16 QnHD) DMD - Controller to 4-Lane DMD Pin Mapping Options

| DLPC3420 Controller 4-LANE DMD ROUTING OPTIONS | | | | DMD PINS |
|--|-------------------------------|-------------------------------|-------------------------------|----------------------------------|
| Option 1 Swap Control = x0 | Option 2 Swap Control = x2 | Option 3 Swap Control = x1 | Option 4 Swap Control = x3 | |
| HS_WDATA_D_P HS_WDATA_D_N | HS_WDATA_E_P HS_WDATA_E_N | HS_WDATA_H_P HS_WDATA_H_N | HS_WDATA_A_P HS_WDATA_A_N | Input DATA_p_0 Input DATA_n_0 |
| HS_WDATA_C_P HS_WDATA_C_N | HS_WDATA_F_P HS_WDATA_F_N | HS_WDATA_G_P HS_WDATA_G_N | HS_WDATA_B_P HS_WDATA_B_N | Input DATA_p_1 Input DATA_n_1 |
| HS_WDATA_F_P HS_WDATA_F_N | HS_WDATA_C_P HS_WDATA_C_N | HS_WDATA_B_P HS_WDATA_B_N | HS_WDATA_G_P HS_WDATA_G_N | Input DATA_p_2 Input DATA_n_2 |
| HS_WDATA_E_P HS_WDATA_E_N | HS_WDATA_D_P HS_WDATA_D_N | HS_WDATA_A_P HS_WDATA_A_N | HS_WDATA_H_P HS_WDATA_H_N | Input DATA_p_3 Input DATA_n_3 |

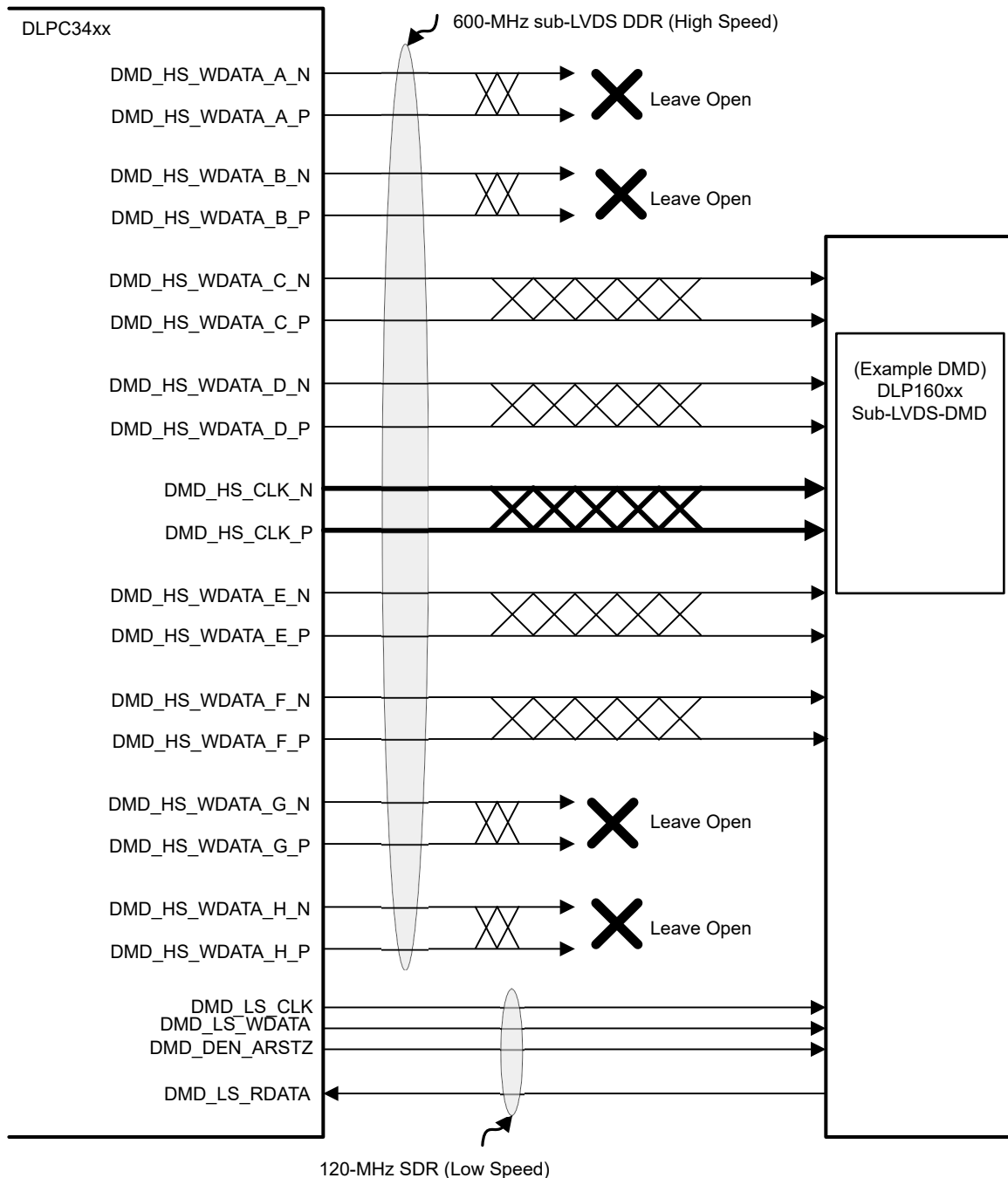


Figure 7-9. DLP160AP (0.16 QnHD) DMD Interface Example

The sub-LVDS high-speed interface waveform quality and timing on the DLPC34xx controller depends on the total length of the interconnect system, the spacing between traces, the characteristic impedance, etch losses, and how well matched the lengths are across the interface. Thus, ensuring positive timing margin requires attention to many factors.

In an attempt to minimize the signal integrity analysis that would otherwise be required, the *DMD Control and Sub-LVDS Signals* layout section is provided as a reference of an interconnect system that satisfy both waveform quality and timing requirements (accounting for both PCB routing mismatch and PCB signal integrity). Variation from these recommendations may also work, but should be confirmed with PCB signal integrity analysis or lab measurements.

7.4 Device Functional Modes

The DLPC34xx controller has two functional modes (ON and OFF) controlled by a single pin, PROJ_ON (GPIO_08).

- When the PROJ_ON pin is set high, the controller powers up and can be programmed to send data to the DMD.
- When the PROJ_ON pin is set low, the controller powers down and consumes minimal power.

7.5 Programming

The DLPC34xx controller contains an Arm® Cortex®-M3 processor with additional functional blocks to enable video processing and control. TI provides software as a firmware image. The customer is required to flash this firmware image onto the SPI flash memory. The DLPC34xx controller loads this firmware during startup and regular operation. The controller and its accompanying DLP chipset requires this proprietary software to operate. The available controller functions depend on the firmware version installed. Different firmware is required for different chipset combinations (such as when using different PMIC devices). See *Documentation Support* at the end of this document or contact TI to view or download the latest published software.

Users can modify software behavior through I²C interface commands. For a list of commands, view the software user's guide accessible through the *Documentation Support* page.

8 Application and Implementation

Note

Information in the following applications sections is not part of the TI component specification, and TI does not warrant its accuracy or completeness. TI's customers are responsible for determining suitability of components for their purposes, as well as validating and testing their design implementation to confirm system functionality.

8.1 Application Information

The DLPC34xx controller is used with the DLP160AP DMD to provide a reliable display solution for many data and video display applications. The DMDs are spatial light modulators which reflect incoming light from an illumination source to one of two directions, with the primary direction being into projection or collection optics. The optical architecture of the system and the format of the image digital data coming into the DLPC34xx are what primarily determine the application requirements.

Click these links to find more information about typical applications:

[Mobile projector](#), [Smart display](#), [Smartphone](#), [Tablet \(multimedia\)](#), [Augmented reality glasses](#), [Smart home display](#), or [Pico projector](#).

8.2 Typical Application

A common application when using the DLPC34xx controller with the DLP160AP DMD and the DLPA200x PMIC/LED driver is to create a Pico projector embedded in a handheld product. For example, a Pico projector may be embedded in a smartphone, a tablet, or a camera. The controller in the Pico projector embedded module typically receives images from a host processor within the product.

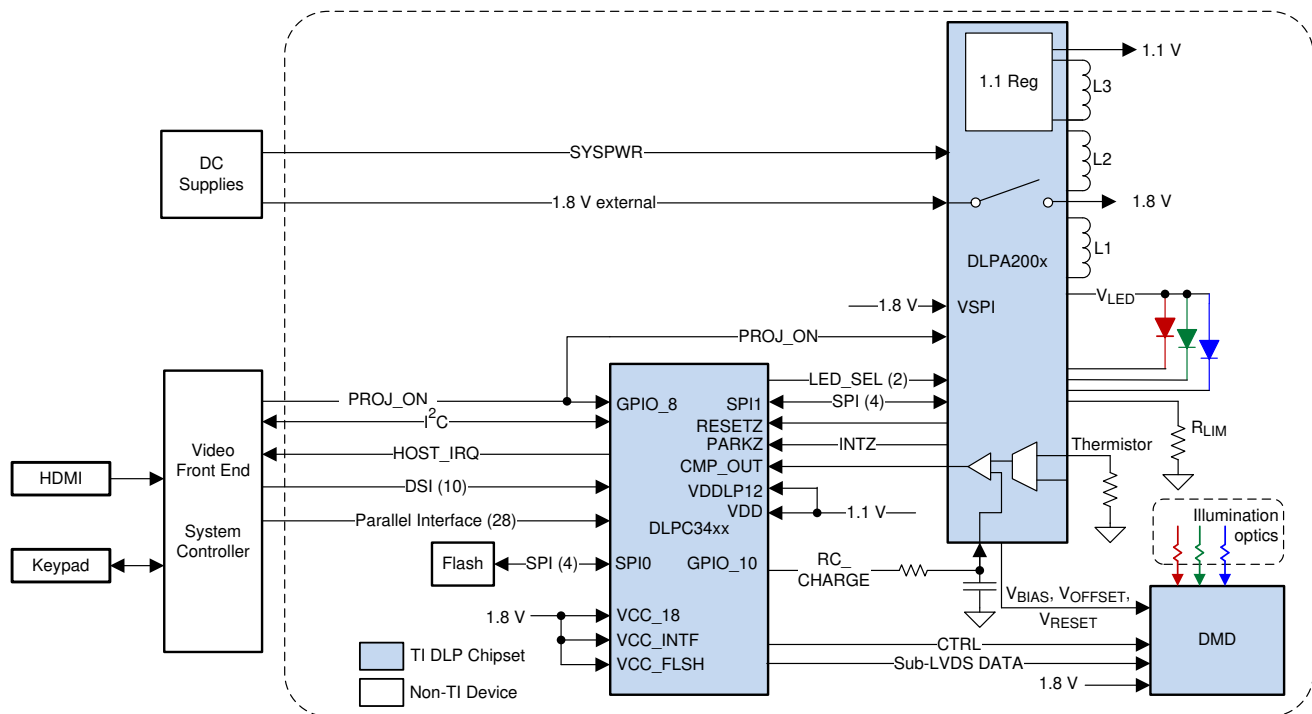


Figure 8-1. Typical Simplified Application Schematic (using DLPA200x)

8.2.1 Design Requirements

A Pico projector can be created by using the DLP chipset that includes the DLP160AP (0.16 QnHD) DMD, the DLPC34xx controller, and the DLPA200x PMIC/LED driver. The DLPC34xx controller processes the digital images, the DLPA200x PMIC provides the analog functions for the chipset, and the DMD displays the image for projection.

In addition to the three DLP devices in the chipset, other components may be needed. At a minimum, a flash device is needed to store the firmware that controls the DLPC34xx controller.

The illumination light that is applied to the DMD is typically from red, green, and blue LEDs. These LEDs are often contained in three separate packages, but sometimes more than one color of LED die may be in the same package to reduce the overall size of the Pico projector.

To receive images, connect the DLPC34xx controller to the host processor using the parallel (or potentially DSI) interface. To send commands to the controller, connect it to the host processor using the I²C interface.

The only required power supplies that are external to the projector system chipset are the battery (SYSPWR) and possibly a regulated 1.8-V supply (some TI PMICs generate the 1.8-V supply but the DLPA200x does not).

The entire projector chipset can be turned on and off by using a single signal called PROJ_ON. When PROJ_ON is high, the chipset turns on and can begin displaying images. When PROJ_ON is set low, the projector chipset turns off and draws just microamps of current on SYSPWR. If 1.8 V is supplied separately from the PMIC (as is the case with the DLPA200x), when PROJ_ON is set low, the 1.8-V supply can continue to be left at 1.8 V and used by other non-projector sections of the product.

8.2.2 Detailed Design Procedure

For connecting the DLP160AP (0.16 QnHD) DMD, DLPC34xx controller, and DLPA200x PMIC, see the reference design schematic and board layout [TIDA-080002](#). When a circuit board layout is created from this schematic, a small circuit board is possible. Follow the layout guidelines to design a reliable projector.

It is typical for an optical engine manufacturer to supply the optical engine that includes the LED packages and a mounted DMD. These manufacturers specialize in designing optics for DLP projectors. There exists [production-ready optical modules](#), [optical module manufacturers](#), and [design houses](#).

8.2.3 Application Curve

As the LED currents that are driven time-sequentially through the red, green, and blue LEDs are increased, the brightness of the projector increases. This increase is somewhat non-linear, and the curve for typical white screen lumens changes with LED currents is shown in [Figure 8-2](#). For the LED currents shown, it is assumed that the same current amplitude is applied to the red, green, and blue LEDs. The shape of the curve depends on the LED devices used as well as the LED system-level heat sink implementation.

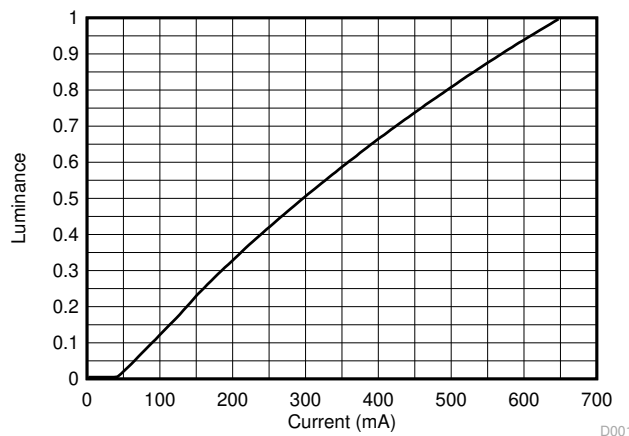


Figure 8-2. Typical Luminescence vs Current

9 Power Supply Recommendations

9.1 PLL Design Considerations

It is acceptable for the VDD_PLLD and VDD_PLLM to be derived from the same regulator as the core VDD. However, to minimize the AC noise component, apply a filter as recommended in the *PLL Power Layout* section.

9.2 System Power-Up and Power-Down Sequence

Although the DLPC34xx controller requires an array of power supply voltage pins (for example, VDD, VDDL12, VDD_PLLM/D, VCC18, VCC_FLSH, and VCC_INTF), if VDDL12 is tied to the 1.1-V VDD supply (which is assumed to be the typical configuration), then there are no restrictions regarding the relative order of power supply sequencing to avoid damaging the DLPC34xx controller (this remains true for both power-up and power-down scenarios). The controller requires no minimum delay time between powering-up and powering-down the individual supplies if the VDDL12 is tied to the 1.1-V VDD supply.

However, if the VDDL12 pin is not tied to the VDD supply, then the VDDL12 pin must be powered-on only after the VDD supply is powered-on. And in a similar sequence, the VDDL12 pin must be powered-off before the VDD supply is powered-off. If the VDDL12 pin is not tied to VDD, then the VDDL12 pin and VDD supply pins must be powered-on or powered-off within 100 ms of each other.

Although there is no risk of damaging the DLPC34xx controller when the above power sequencing rules are followed, these additional power sequencing recommendations must be considered to ensure proper system operation:

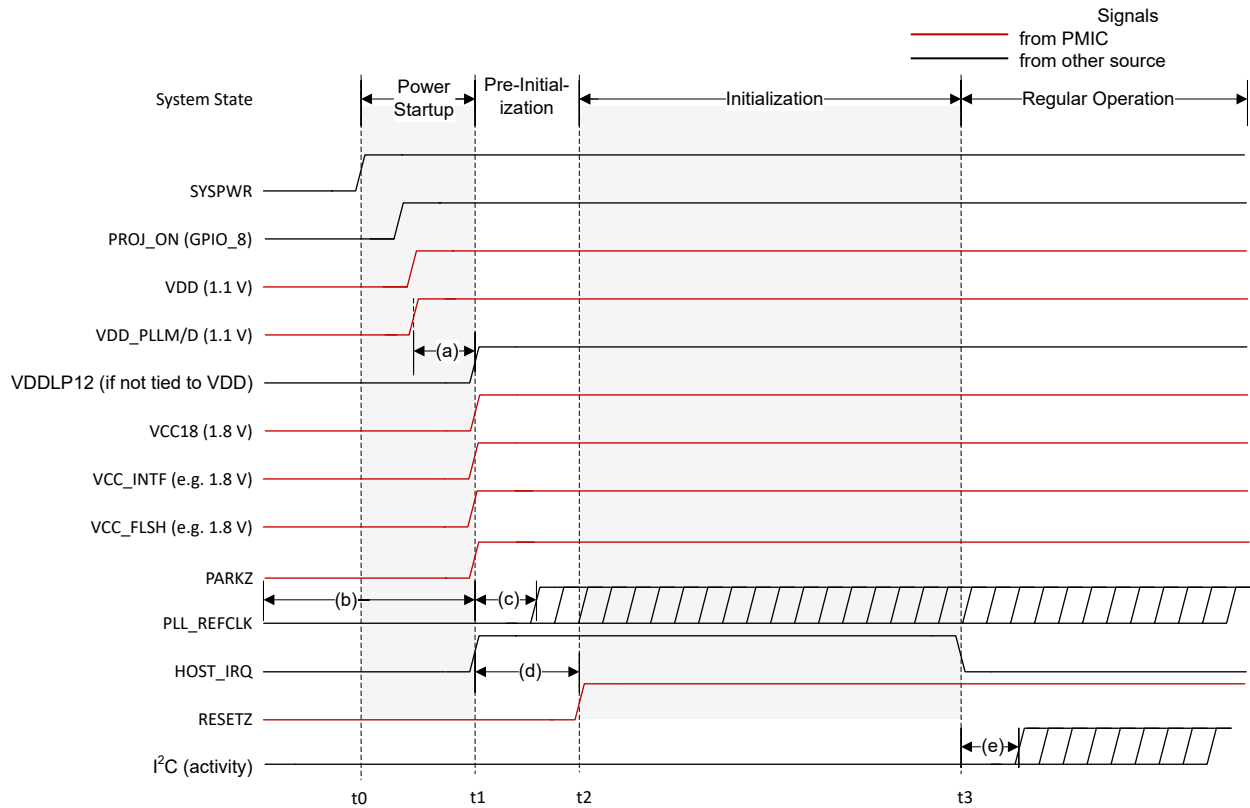
- To ensure that the DLPC34xx controller output signal states behave as expected, all controller I/O supplies are encouraged to remain applied while VDD core power is applied. If VDD core power is removed while the I/O supply (VCC_INTF) is applied, then the output signal states associated with the inactive I/O supply go to a high impedance state.
- Because additional power sequencing rules may exist for devices that share the supplies with the DLPC34xx controller (such as the PMIC and DMD), these devices may force additional system power sequencing requirements.

[Figure 9-1](#), [Figure 9-2](#), and [Figure 9-3](#) show the DLPC34xx power-up sequence, the normal PARK power-down sequence, and the fast PARK power-down sequence of a typical DLPC34xx system.

When the VDD core power is applied, but I/O power is not applied, the controller may draw additional leakage current. This leakage current does not affect the normal DLPC34xx controller operation or reliability.

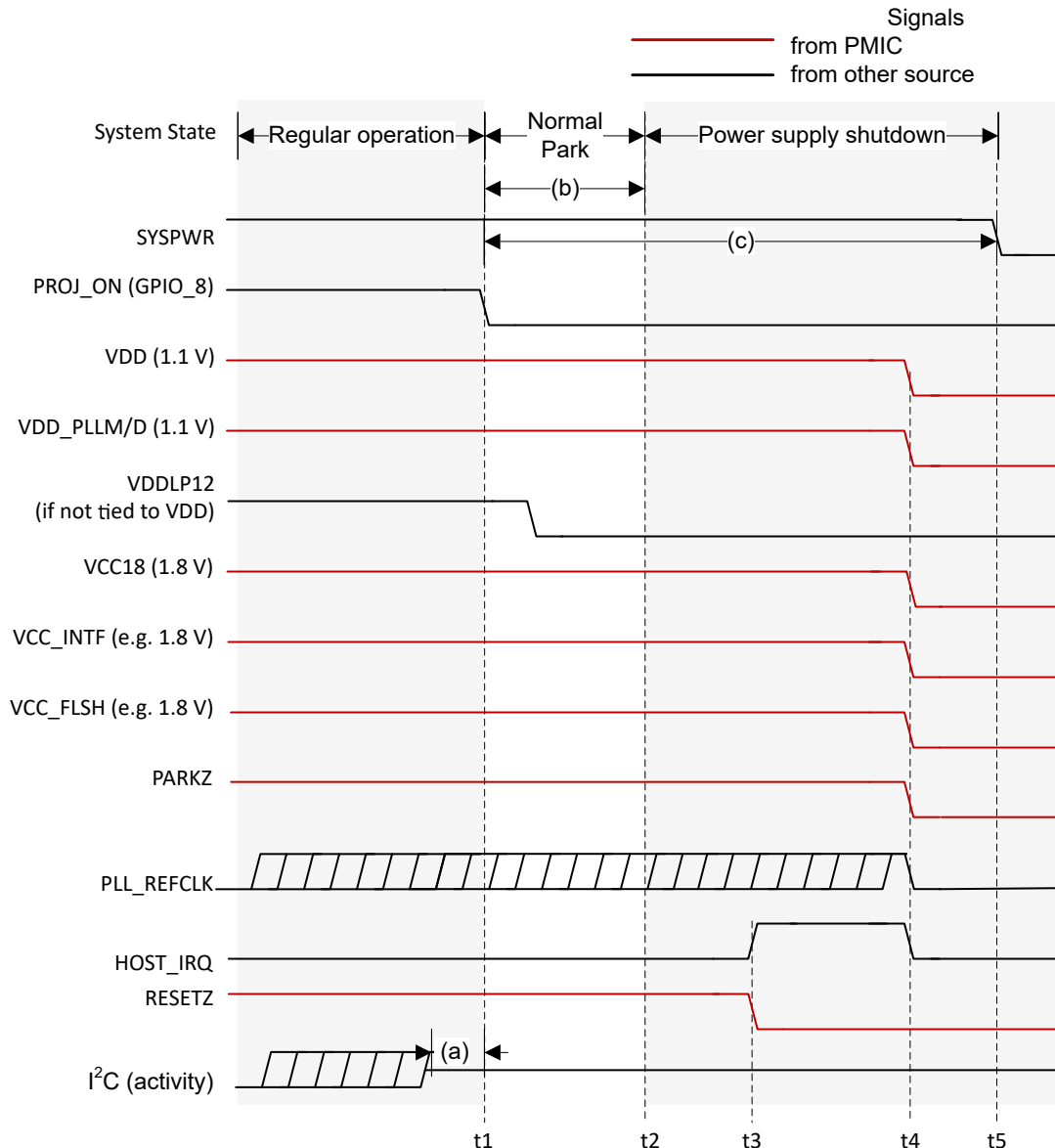
Note

During a Normal Park it is recommended to maintain SYSPWR within specification for at least 50 ms after PROJ_ON goes low. Doing so allows the DMD to be parked and the power supply rails to safely power down. After 50 ms, SYSPWR can be turned off. If a DLPA200x is used, it is also recommended that the 1.8-V supply fed into the DLPA200x load switch be maintained within specification for at least 50 ms after PROJ_ON goes low.



- t0: SYSPWR applied to the PMIC. All other voltage rails are derived from SYSPWR.
- t1: All supplies reach 95% of their specified nominal value. Note HOST_IRQ may go high sooner if it is pulled-up to a different external supply.
- t2: Point where RESETZ is deasserted (goes high). This indicates the beginning of the controller auto-initialization routine.
- t3: HOST_IRQ goes low to indicate initialization is complete.
- (a): VDDL P12 must be powered on after VDD if it is supplied from a separate source.
- (b): PLL_REFCLK is allowed to be active before power is applied.
- (c): PLL_REFCLK must be stable within 5 ms of all power being applied. For external oscillator applications this is oscillator dependent, and for crystal applications this is crystal and controller oscillator cell dependent.
- (d): PARKZ must be high before RESETZ releases to support auto-initialization. RESETZ must also be held low for at least 5 ms after the power supplies are in specification.
- (e): I²C activity cannot start until HOST_IRQ goes low to indicate auto-initialization completes.

Figure 9-1. System Power-Up Waveforms



t1: PROJ_ON goes low to begin the power down sequence.

t2: The controller finishes parking the DMD.

t3: RESETZ is asserted which causes HOST_IRQ to be pulled high.

t4: All controller power supplies are turned off.

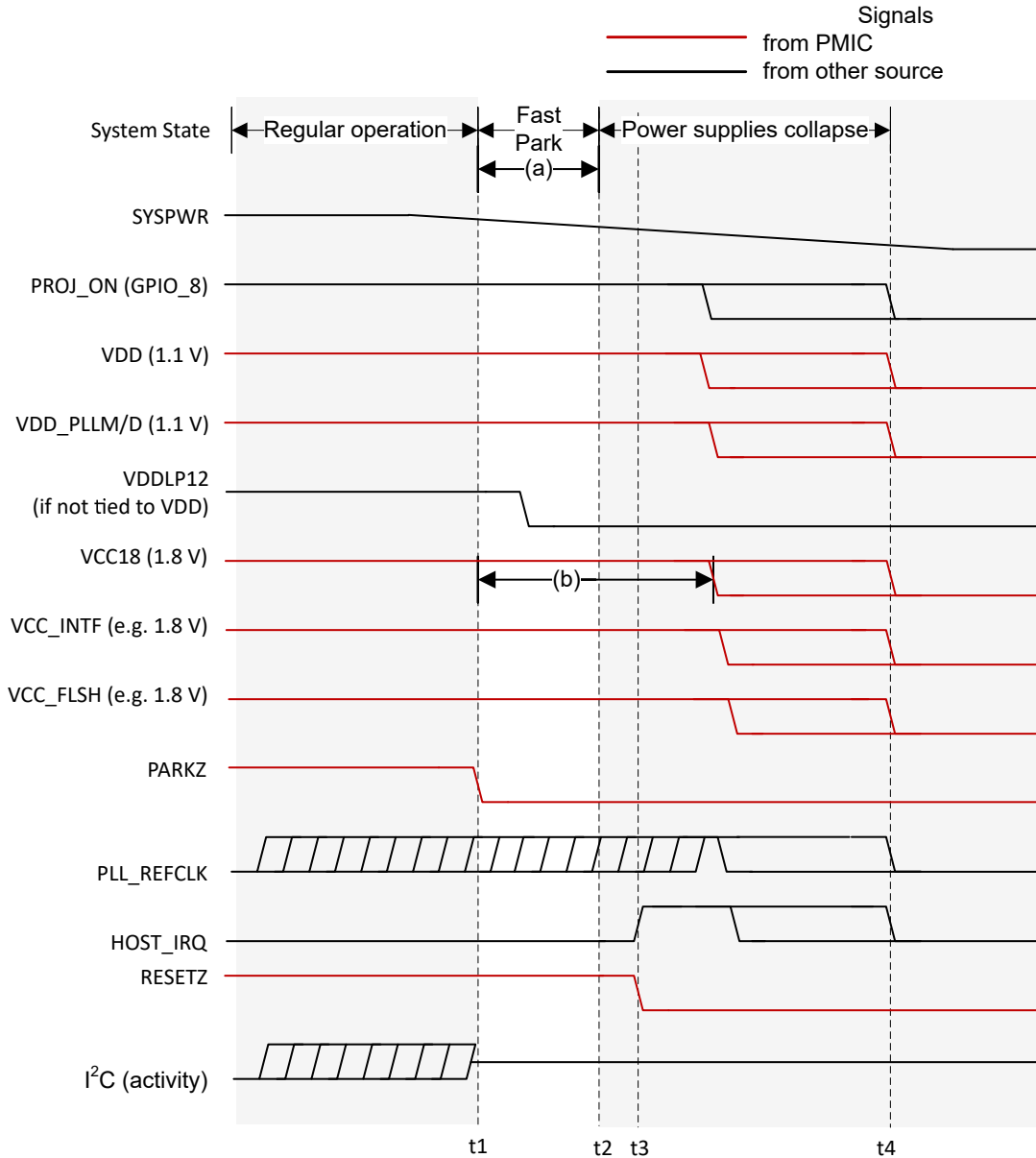
t5: SYSPWR is removed now that all other supplies are turned off.

(a): I²C activity must stop before PROJ_ON is deasserted (goes low).

(b): The DMD will be parked within 20 ms of PROJ_ON being deasserted (going low). VDD, VDD_PLLM/D, VCC18, VCC_INITF, and VCC_FLSH power supplies and the PLL_REFCLK must be held within specification for a minimum of 20 ms after PROJ_ON is deasserted (goes low). However, 20 ms does not satisfy the typical shutdown timing of the entire chipset. It is therefore recommended to follow note (c).

(c): It is recommended that SYSPWR not be turned off for 50 ms after PROJ_ON is deasserted (goes low). This time allows the DMD to be parked, the controller to turn off, and the PMIC supplies to shut down.

Figure 9-2. Normal Park Power-Down Waveforms



- t1: A fault is detected (in this example the PMIC detects a UVLO condition) and PARKZ is asserted (goes low) to tell the controller to initiate a fast park of the DMD.
- t2: The controller finishes the fast park procedure.
- t3: RESETZ is asserted which puts the controller in a reset state which causes HOST_IRQ to be pulled high.
- t4: Eventually all power supplies that were derived from SYSPWR collapse.
- (a): VDD, VDD_PLLM/D, VCC18, VCC_INITF, and VCC_FLSH power supplies and the PLL_REFCLK must be held within specification for a minimum of 32 μ s after PARKZ is asserted (goes low).
- (b): VCC18 must remain in specification long enough to satisfy DMD power sequencing requirements defined in the DMD datasheet. Also see the DLPA200x datasheets for more information.

Figure 9-3. Fast Park Power-Down Waveforms

9.3 Power-Up Initialization Sequence

An external power monitor is required to hold the DLPC34xx controller in system reset during the power-up sequence by driving RESETZ to a logic-low state. It shall continue to drive RESETZ low until all controller voltages reach the minimum specified voltage levels, PARKZ goes high, and the input clocks are stable. The external power monitoring is automatically done by the DLPA200x PMIC.

No signals output by the DLPC34xx controller will be in their active state while RESETZ is asserted. The following signals are tri-stated while RESETZ is asserted:

- SPI0_CLK
- SPI0_DOUT
- SPI0_CSZ0
- SPI0_CSZ1
- GPIO [19:00]

Add external pullup (or pulldown) resistors to all tri-stated output signals (including bidirectional signals to be configured as outputs) to avoid floating controller outputs during reset if they are connected to devices on the PCB that can malfunction. For SPI, at a minimum, include a pullup to any chip selects connected to devices. Unused bidirectional signals can be configured as outputs in order to avoid floating controller inputs after RESETZ is set high.

The following signals are forced to a logic low state while RESETZ is asserted and the corresponding I/O power is applied:

- LED_SEL_0
- LED_SEL_1
- DMD_DEN_ARSTZ

After power is stable and the PLL_REFCLK_I clock input to the DLPC34xx controller is stable, then RESETZ should be deactivated (set to a logic high). The DLPC34xx controller then performs a power-up initialization routine that first locks its PLL followed by loading self configuration data from the external flash. Upon release of RESETZ, all DLPC34xx I/Os will become active. Immediately following the release of RESETZ, the HOST_IRQ signal will be driven high to indicate that the auto initialization routine is in progress. However, since a pullup resistor is connected to signal HOST_IRQ, this signal will have already gone high before the controller actively drives it high. Upon completion of the auto-initialization routine, the DLPC34xx controller will drive HOST_IRQ low to indicate the initialization done state of the controller has been reached.

To ensure reliable operation, during the power-up initialization sequence, GPIO_08 (PROJ_ON) must not be deasserted. In other words, once the startup routine has begun (by asserting PROJ_ON), the startup routine must complete (indicated by HOST_IRQ going low) before the controller can be commanded off (by deasserting PROJ_ON).

Note

No I²C or DSI (if applicable) activity is permitted until HOST_IRQ goes low.

9.4 DMD Fast Park Control (PARKZ)

PARKZ is an input early warning signal that must alert the controller at least 32 μ s before DC supply voltages drop below specifications. Typically, the PARKZ signal is provided by the DLPA200x interrupt output signal. PARKZ must be deasserted (set high) prior to releasing RESETZ (that is, prior to the low-to-high transition on the RESETZ input) for normal operation. When PARKZ is asserted (set low) the controller performs a Fast Park operation on the DMD which assists in maintaining the lifetime of the DMD. The reference clock must continue running and RESETZ must remain deactivated for at least 32 μ s after PARKZ has been asserted (set low) to allow the park operation to complete.

Fast Park operation is only intended for use when loss of power is imminent and beyond the control of the host processor (for example, when the external power source has been disconnected or the battery has dropped below a minimum level). The longest lifetime of the DMD may not be achieved with Fast Park operation. The longest lifetime is achieved with a Normal Park operation (initiated through GPIO_08). Hence, PARKZ is typically only used instead of a Normal Park request if there is not enough time for a Normal Park. A Normal Park operation takes much longer than 32 μ s to park the mirrors. During a Normal Park operation, the DLPA200x keeps on all power supplies, and keeps RESETZ high, until the longer mirror parking has completed. Additionally, the DLPA200x may hold the supplies on for a period of time after the parking has been completed. View the relevant DLPA200x datasheet for more information. The longer mirror parking time ensures the longest DMD lifetime and reliability. The *DMD Parking Switching Characteristics* section specifies the park timings.

9.5 Hot Plug I/O Usage

The DLPC34xx controller provides fail-safe I/O on all host interface signals (signals powered by VCC_INTF). This allows these inputs to externally be driven even when no I/O power is applied. Under this condition, the controller does not load the input signal nor draw excessive current that could degrade controller reliability. For example, the I²C bus from the host to other components is not affected by powering off VCC_INTF to the DLPC34xx controller. This allows additional devices on the I²C bus to be utilized even if the controller is not powered on. TI recommends weak pullup or pulldown resistors to avoid floating inputs for signals that feed back to the host.

If the I/O supply (VCC_INTF) powers off, but the core supply (VDD) remains on, then the corresponding input buffer may experience added leakage current; however, the added leakage current does not damage the DLPC34xx controller.

However, if VCC_INTF is powered and VDD is not powered, the controller may drive the IIC0_xx pins low which prevents communication on this I²C bus. Do not power up the VCC_INTF pin before powering up the VDD pin for any system that has additional secondary devices on this bus.

10 Layout

10.1 Layout Guidelines

For a summary of the PCB design requirements for the DLPC34xx controller see [PCB Design Requirements for TI DLP Pico TRP Digital Micromirror Devices](#). Some applications (such as high frame rate video) may require the use of 1-oz (or greater) copper planes to manage the controller package heat.

10.1.1 PLL Power Layout

Follow these recommended guidelines to achieve acceptable controller performance for the internal PLL. The DLPC34xx controller contains two internal PLLs which have dedicated analog supplies (VDD_PLLM, VSS_PLLM, VDD_PLLD, and VSS_PLLD). At a minimum, isolate the VDD_PLLx power and VSS_PLLx ground pins using a simple passive filter consisting of two series ferrite beads and two shunt capacitors (to widen the spectrum of noise absorption). It is recommended that one capacitor be 0.1 μ F and one be 0.01 μ F. Place all four components as close to the controller as possible. It is especially important to keep the leads of the high frequency capacitors as short as possible. Connect both capacitors from VDD_PLLM to VSS_PLLM and VDD_PLLD to VSS_PLLD on the controller side of the ferrite beads.

Select ferrite beads with these characteristics:

- DC resistance less than 0.40 Ω
- Impedance at 10 MHz equal to or greater than 180 Ω
- Impedance at 100 MHz equal to or greater than 600 Ω

The PCB layout is critical to PLL performance. It is vital that the quiet ground and power are treated like analog signals. Therefore, VDD_PLLM and VDD_PLLD must be a single trace from the DLPC34xx controller to both capacitors and then through the series ferrites to the power source. Make the power and ground traces as short as possible, parallel to each other, and as close as possible to each other.

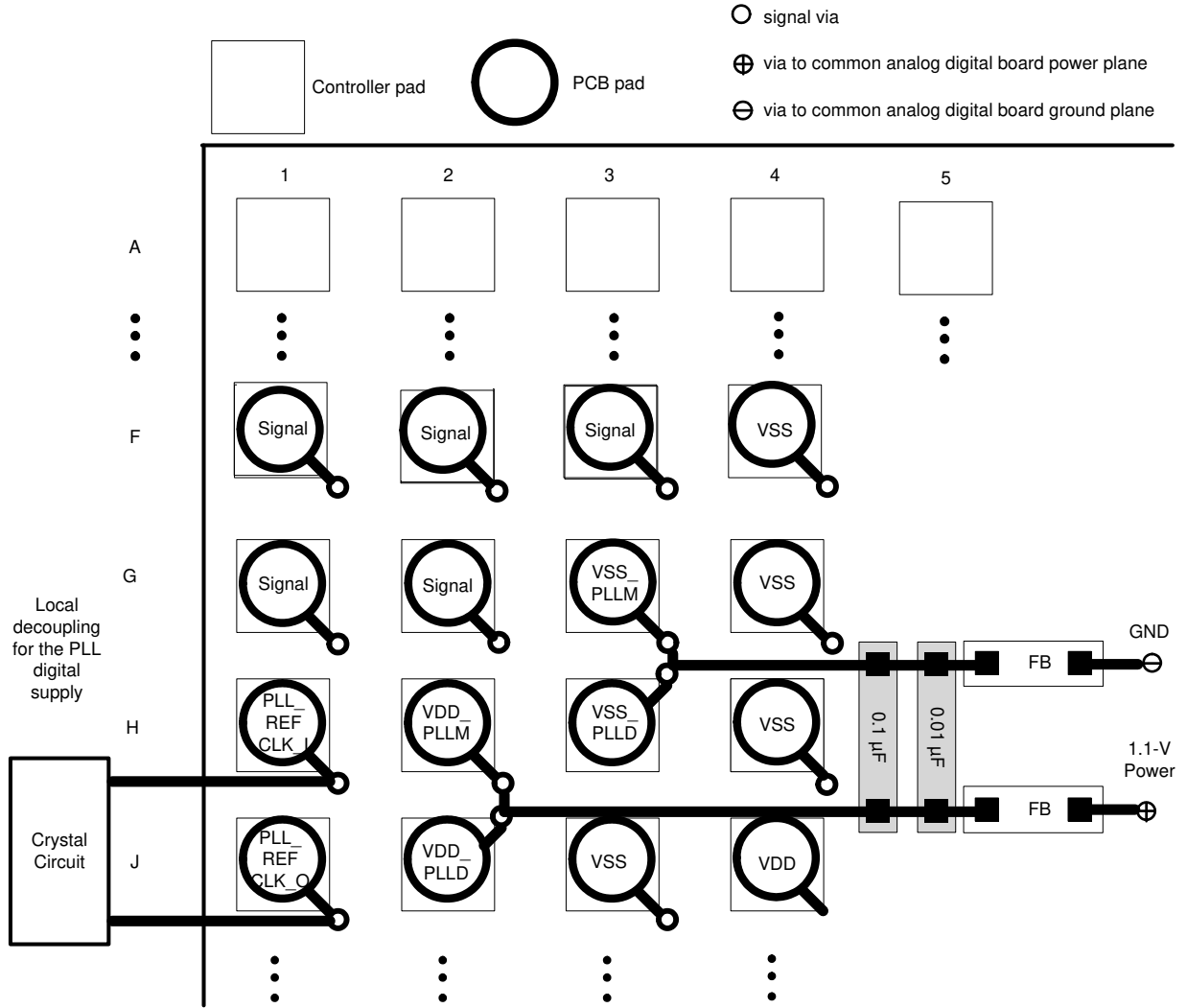
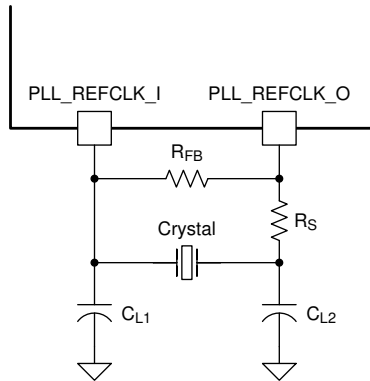


Figure 10-1. PLL Filter Layout

10.1.2 Reference Clock Layout

The DLPC34xx controller requires an external reference clock to feed the internal PLL. Use either a crystal or oscillator to supply this reference. The DLPC34xx reference clock must not exceed a frequency variation of ± 200 ppm (including aging, temperature, and trim component variation).

Figure 10-2 shows the required discrete components when using a crystal.



C_L = Crystal load capacitance (farads)

$C_{L1} = 2 \times (C_L - C_{stray_pll_refclk_i})$

$C_{L2} = 2 \times (C_L - C_{stray_pll_refclk_o})$

where:

- $C_{stray_pll_refclk_i}$ = Sum of package and PCB stray capacitance at the crystal pin associated with the controller pin pll_refclk_i .
- $C_{stray_pll_refclk_o}$ = Sum of package and PCB stray capacitance at the crystal pin associated with the controller pin pll_refclk_o .

Figure 10-2. Required Discrete Components

10.1.2.1 Recommended Crystal Oscillator Configuration

Table 10-1. Crystal Port Characteristics

| PARAMETER | NOM | UNIT |
|---------------------------------|-----|------|
| PLL_REFCLK_I TO GND capacitance | 1.5 | pF |
| PLL_REFCLK_O TO GND capacitance | 1.5 | pF |

Table 10-2. Recommended Crystal Configuration

| PARAMETER ^{(1) (2)} | RECOMMENDED | UNIT |
|---|---|------------|
| Crystal circuit configuration | Parallel resonant | |
| Crystal type | Fundamental (first harmonic) | |
| Crystal nominal frequency | 24 | MHz |
| Crystal frequency tolerance (including accuracy, temperature, aging and trim sensitivity) | ± 200 | PPM |
| Maximum startup time | 1.0 | ms |
| Crystal equivalent series resistance (ESR) | 120 (max) | Ω |
| Crystal load | 6 | pF |
| R_S drive resistor (nominal) | 100 | Ω |
| R_{FB} feedback resistor (nominal) | 1 | M Ω |
| C_{L1} external crystal load capacitor | See equation in Figure 10-2 notes | pF |
| C_{L2} external crystal load capacitor | See equation in Figure 10-2 notes | pF |
| PCB layout | A ground isolation ring around the crystal is recommended | |

(1) Temperature range of -30°C to 85°C .

(2) The crystal bias is determined by the controllers VCC_INTF voltage rail, which is variable (not the $VCC18$ rail).

If an external oscillator is used, then the oscillator output must drive the PLL_REFCLK_I pin on the DLPC34xx controller, and the PLL_REFCLK_O pin must be left unconnected.

Table 10-3. Recommended Crystal Parts

| MANUFACTURER (1) (2) | PART NUMBER | SPEED (MHz) | TEMPERATURE AND AGING (ppm) | MAXIMUM ESR (Ω) | LOAD CAPACITANCE (pF) | PACKAGE DIMENSIONS (mm) |
|-------------------------|--------------------------------|----------------|-----------------------------------|-----------------------------|-----------------------------|-------------------------------|
| KDS | DSX211G-24.000M-8pF-50-50 | 24 | ± 50 | 120 | 8 | 2.0 × 1.6 |
| Murata | XRCGB24M000F0L11R0 | 24 | ± 100 | 120 | 6 | 2.0 × 1.6 |
| NDK | NX2016SA 24M EXS00A-CS05733 | 24 | ± 145 | 120 | 6 | 2.0 × 1.6 |

- (1) The crystal devices in this table have been validated to work with the DLPC34xx controller. Other devices may also be compatible but have not necessarily been validated by TI.
- (2) Operating temperature range: -30°C to 85°C for all crystals.

10.1.3 DSI Interface Layout

Follow these PCB layout guidelines for the DSI LVDS interface to ensure proper DSI operation.

- Route the differential clock and data lines to match 50- Ω single-ended and 100- Ω differential impedance.
- The length of dp and dn should be matched. If that is not possible, ensure that dp is only slightly longer than dn (delta delay not to exceed 8-10 ps), especially for the clock-lane. Doing so prevents propagation on the clock lane during the HS to LP transition.
- No thru-hole vias permitted on high-speed traces.
- Create trace routes on top or bottom layers preferably.
- Must have a ground reference plane.
- Avoid power plane transitions in upper or lower layers.
- Avoid using SMD (surface mount device) resistors larger than 0402. If resistors are used in the traces, ensure that the layer below has a void.
- No thru-hole SMA (SubMiniature version A) connectors.
- Minimize trace length as much as possible.
- Perform signal integrity simulations to ensure board performance.

10.1.4 Unused Pins

To avoid potentially damaging current caused by floating CMOS input-only pins, TI recommends tying unused controller input pins through a pullup resistor to its associated power supply or a pulldown resistor to ground. For controller inputs with internal pullup or pulldown resistors, it is unnecessary to add an external pullup or pulldown unless specifically recommended. Note that internal pullup and pulldown resistors are weak and should not be expected to drive an external device. The DLPC34xx controller implements very few internal resistors and are listed in the tables found in the *Pin Configuration and Functions* section. When external pullup or pulldown resistors are needed for pins that have weak pullup or pulldown resistors, choose a maximum resistance of 8 k Ω .

Never tie unused output-only pins directly to power or ground. Leave them open.

When possible, TI recommends that unused bidirectional I/O pins are configured to their output state such that the pin can remain open. If this control is not available and the pins may become an input, then include an appropriate pullup (or pulldown) resistor.

10.1.5 DMD Control and Sub-LVDS Signals

Table 10-4. Maximum Pin-to-Pin PCB Interconnect Recommendations

| DMD BUS SIGNAL ^{(1) (2)} | SIGNAL INTERCONNECT TOPOLOGY | | UNIT |
|--------------------------------------|------------------------------------|-----------------------------------|------------|
| | SINGLE-BOARD SIGNAL ROUTING LENGTH | MULTI-BOARD SIGNAL ROUTING LENGTH | |
| DMD_HS_CLK_P DMD_HS_CLK_N | 6.0 (152.4) | See ⁽³⁾ | in (mm) |
| DMD_HS_WDATA_C_P DMD_HS_WDATA_C_N | 6.0 (152.4) | See ⁽³⁾ | in mm |
| DMD_HS_WDATA_D_P DMD_HS_WDATA_D_N | | | |
| DMD_HS_WDATA_E_P DMD_HS_WDATA_E_N | | | |
| DMD_HS_WDATA_F_P DMD_HS_WDATA_F_N | | | |
| DMD_LS_CLK | 6.5 (165.1) | See ⁽³⁾ | in (mm) |
| DMD_LS_WDATA | 6.5 (165.1) | See ⁽³⁾ | in (mm) |
| DMD_LS_RDATA | 6.5 (165.1) | See ⁽³⁾ | in (mm) |
| DMD_DEN_ARSTZ | 7.0 (177.8) | See ⁽³⁾ | in (mm) |

- (1) Maximum signal routing length includes escape routing.
(2) Multi-board DMD routing length is more restricted due to the impact of the connector.
(3) Due to PCB variations, these recommendations cannot be defined. Any board design should SPICE simulate with the controller IBIS model (found under the *Tools & Software* tab of the controller web page) to ensure routing lengths do not violate signal requirements.

Table 10-5. High Speed PCB Signal Routing Matching Requirements

| SIGNAL GROUP LENGTH MATCHING ^{(1) (2) (3)} | | | | |
|---|--------------------------------------|------------------------------|-----------------------------|------------|
| INTERFACE | SIGNAL GROUP | REFERENCE SIGNAL | MAX MISMATCH ⁽⁴⁾ | UNIT |
| DMD ⁽⁵⁾ | DMD_HS_WDATA_C_P DMD_HS_WDATA_C_N | DMD_HS_CLK_P DMD_HS_CLK_N | ±1.0 (±25.4) | in (mm) |
| | DMD_HS_WDATA_D_P DMD_HS_WDATA_D_N | | | |
| | DMD_HS_WDATA_E_P DMD_HS_WDATA_E_N | | | |
| | DMD_HS_WDATA_F_P DMD_HS_WDATA_F_N | | | |
| DMD | DMD_HS_WDATA_x_P | DMD_HS_WDATA_x_N | ±0.025 (±0.635) | in (mm) |
| DMD | DMD_HS_CLK_P | DMD_HS_CLK_N | ±0.025 (±0.635) | in (mm) |
| DMD | DMD_LS_WDATA DMD_LS_RDATA | DMD_LS_CLK | ±0.2 (±5.08) | in (mm) |
| DMD | DMD_DEN_ARSTZ | N/A | N/A | in (mm) |

- (1) The length matching values apply to PCB routing lengths only. Internal package routing mismatch associated with the DLPC34xx controller or the DMD require no additional consideration.
- (2) Training is applied to DMD HS data lines. This is why the defined matching requirements are slightly relaxed compared to the LS data lines.
- (3) DMD LS signals are single ended.
- (4) Mismatch variance for a signal group is always with respect to the reference signal.
- (5) DMD HS data lines are differential, thus these specifications are pair-to-pair.

Table 10-6. Signal Requirements

| PARAMETER | REFERENCE | REQUIREMENT |
|---------------------------|------------------|--|
| Source series termination | DMD_LS_WDATA | Required |
| | DMD_LS_CLK | Required |
| | DMD_DEN_ARSTZ | Acceptable |
| | DMD_LS_RDATA | Required |
| | DMD_HS_WDATA_x_y | Not acceptable |
| | DMD_HS_CLK_y | Not acceptable |
| Endpoint termination | DMD_LS_WDATA | Not acceptable |
| | DMD_LS_CLK | Not acceptable |
| | DMD_DEN_ARSTZ | Not acceptable |
| | DMD_LS_RDATA | Not acceptable |
| | DMD_HS_WDATA_x_y | Not acceptable |
| | DMD_HS_CLK_y | Not acceptable |
| PCB impedance | DMD_LS_WDATA | 68 Ω ±10% |
| | DMD_LS_CLK | 68 Ω ±10% |
| | DMD_DEN_ARSTZ | 68 Ω ±10% |
| | DMD_LS_RDATA | 68 Ω ±10% |
| | DMD_HS_WDATA_x_y | 100 Ω ±10% |
| | DMD_HS_CLK_y | 100 Ω ±10% |
| Signal type | DMD_LS_WDATA | SDR (single data rate) referenced to DMD_LS_DCLK |
| | DMD_LS_CLK | SDR referenced to DMD_LS_DCLK |
| | DMD_DEN_ARSTZ | SDR |
| | DMD_LS_RDATA | SDR referenced to DMD_LS_DCLK |
| | DMD_HS_WDATA_x_y | sub-LVDS |
| | DMD_HS_CLK_y | sub-LVDS |

10.1.6 Layer Changes

- Single-ended signals: Minimize the number of layer changes.
- Differential signals: Individual differential pairs can be routed on different layers. Ideally ensure that the signals of a given pair do not change layers.

10.1.7 Stubs

- Avoid using stubs.

10.1.8 Terminations

- DMD_HS differential signals require no external termination resistors.
- Make sure the DMD_LS_CLK and DMD_LS_WDATA signal paths include a 43-Ω series termination resistor located as close as possible to the corresponding controller pins.
- Make sure the DMD_LS_RDATA signal path includes a 43-Ω series termination resistor located as close as possible to the corresponding DMD pin.
- The DMD_DEN_ARSTZ pin requires no series resistor.

10.1.9 Routing Vias

- The number of vias on DMD_HS signals must be minimized and ideally not exceed two.
- Any and all vias on DMD_HS signals must be located as close to the controller as possible.
- The number of vias on the DMD_LS_CLK and DMD_LS_WDATA signals must be minimized and ideally not exceed two.
- Any and all vias on the DMD_LS_CLK and DMD_LS_WDATA signals must be located as close to the controller as possible.

10.1.10 Thermal Considerations

The underlying thermal limitation for the DLPC34xx controller is that the maximum operating junction temperature (T_J) not be exceeded (this is defined in the *Recommended Operating Conditions* section).

Some factors that influence T_J are as follows:

- operating ambient temperature
- airflow
- PCB design (including the component layout density and the amount of copper used)
- power dissipation of the DLPC34xx controller
- power dissipation of surrounding components

The controller package is designed to primarily extract heat through the power and ground planes of the PCB. Thus, copper content and airflow over the PCB are important factors.

The recommended maximum operating ambient temperature (T_A) is provided primarily as a design target and is based on maximum DLPC34xx controller power dissipation and $R_{\theta JA}$ at 0 m/s of forced airflow, where $R_{\theta JA}$ is the thermal resistance of the package as measured using a JEDEC defined standard test PCB with two, 1-oz power planes. This JEDEC test PCB is not necessarily representative of the DLPC34xx controller PCB, so the reported thermal resistance may not be accurate in the actual product application. Although the actual thermal resistance may be different, it is the best information available during the design phase to estimate thermal performance. TI highly recommended that thermal performance be measured and validated after the PCB is designed and the application is built.

To evaluate the thermal performance, measure the top center case temperature under the worst case product scenario (maximum power dissipation, maximum voltage, maximum ambient temperature), and validate the controller does not exceed the maximum recommended case temperature (T_C). This specification is based on the measured ϕ_{JT} for the DLPC34xx controller package and provides a relatively accurate correlation to junction temperature.

Take care when measuring this case temperature to prevent accidental cooling of the package surface. TI recommends a small (approximately 40 gauge) thermocouple. Place the bead and thermocouple wire so that they contact the top of the package. Cover the bead and thermocouple wire with a minimal amount of thermally conductive epoxy. Route the wires closely along the package and the board surface to avoid cooling the bead through the wires.

10.2 Layout Example

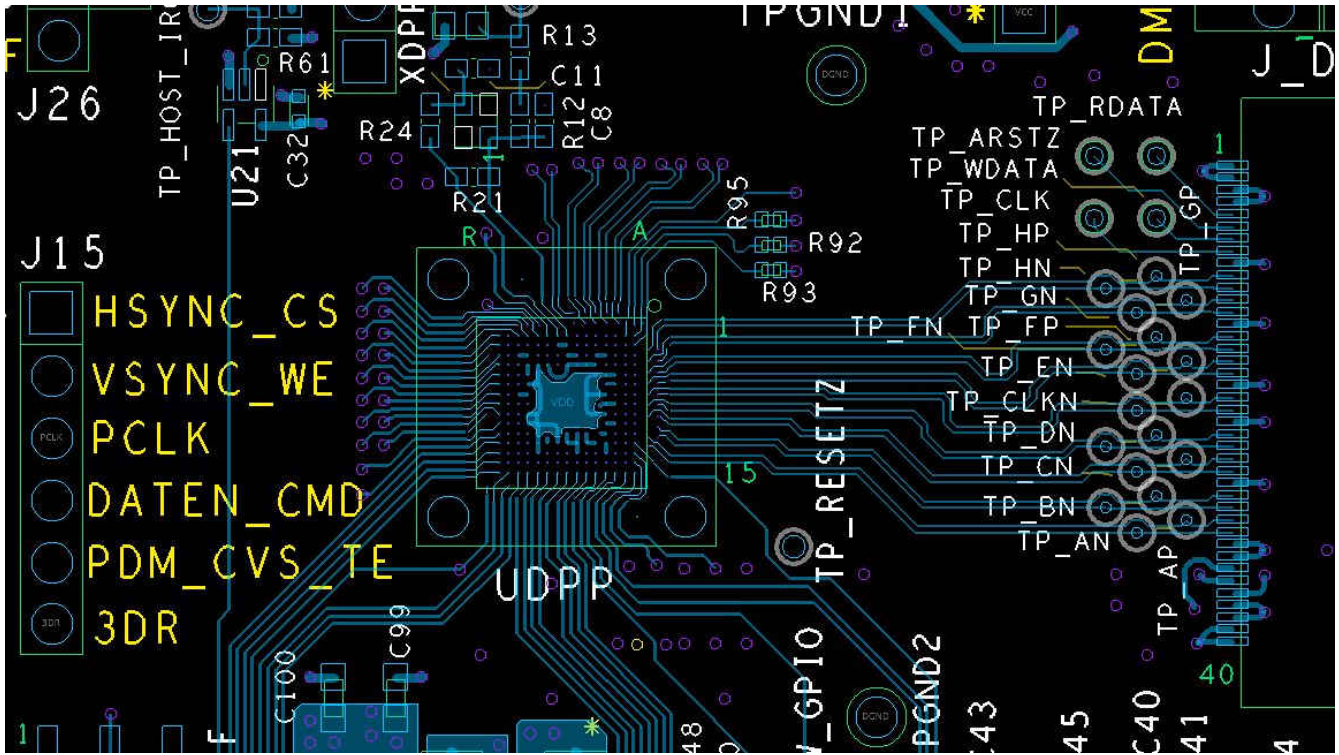


Figure 10-3. Layout Recommendation

11 Device and Documentation Support

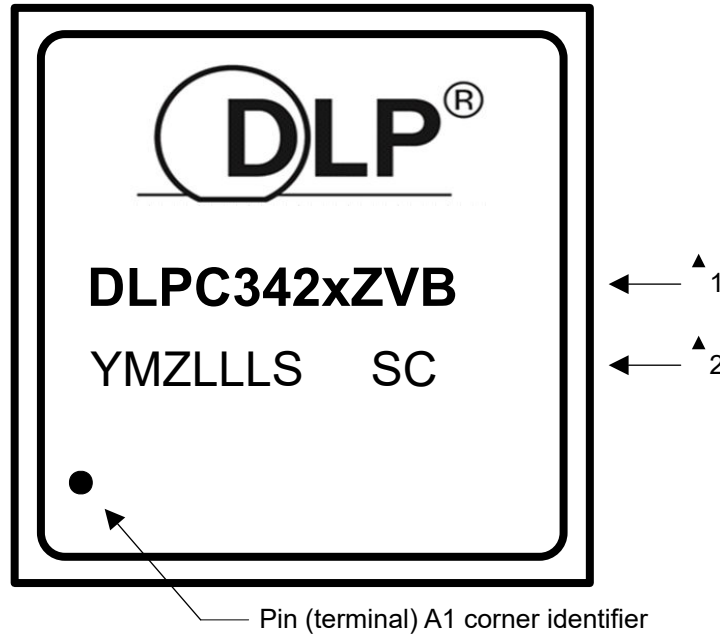
11.1 Device Support

11.1.1 Third-Party Products Disclaimer

TI'S PUBLICATION OF INFORMATION REGARDING THIRD-PARTY PRODUCTS OR SERVICES DOES NOT CONSTITUTE AN ENDORSEMENT REGARDING THE SUITABILITY OF SUCH PRODUCTS OR SERVICES OR A WARRANTY, REPRESENTATION OR ENDORSEMENT OF SUCH PRODUCTS OR SERVICES, EITHER ALONE OR IN COMBINATION WITH ANY TI PRODUCT OR SERVICE.

11.1.2 Device Nomenclature

11.1.2.1 Device Markings



Marking Definitions:

- Line 1: DLP Device Name: DLPC342x where x is a "0" for this device
- Line 2: YMZLLLS SC: Foundry lot code for semiconductor wafers and lead-free solder ball marking
 YM: Year Month
 Z, S: Assembly site
 LLL: Assembly lot traceability
 SC: Solder ball composition
 e1: Indicates lead-free solder balls consisting of SnAgCu
 G8: Indicates lead-free solder balls consisting of tin-silver-copper (SnAgCu) with silver content less than or equal to 1.5% and that the mold compound meets TI's definition of green

Note

1. Engineering prototype samples are marked with an X suffix appended to the TI part number. For example, 2512737-0001X.
2. See [Section 7.3.1.1](#), for DLPC342x resolutions on the DMD supported per part number.

11.1.3 Video Timing Parameter Definitions

See [Figure 11-1](#) for a visual description.

Active Lines Per Frame (ALPF) Defines the number of lines in a frame containing displayable data. ALPF is a subset of the TLPF.

- Active Pixels Per Line (APPL)** Defines the number of pixel clocks in a line containing displayable data. APPL is a subset of the TPPL.
- Horizontal Back Porch (HBP) Blanking** Defines the number of blank pixel clocks after the active edge of horizontal sync but before the first active pixel.
- Horizontal Front Porch (HFP) Blanking** Defines the number of blank pixel clocks after the last active pixel but before horizontal sync.
- Horizontal Sync (HS or Hsync)** Timing reference point that defines the start of each horizontal interval (line). The active edge of the HS signal defines the absolute reference point. The active edge (either rising or falling edge as defined by the source) is the reference from which all horizontal blanking parameters are measured.
- Total Lines Per Frame (TLPF)** Total number of active and inactive lines per frame; defines the vertical period (or frame time).
- Total Pixel Per Line (TPPL)** Total number of active and inactive pixel clocks per line; defines the horizontal line period in pixel clocks.
- Vertical Sync (VS or Vsync)** Timing reference point that defines the start of the vertical interval (frame). The absolute reference point is defined by the active edge of the VS signal. The active edge (either rising or falling edge as defined by the source) is the reference from which all vertical blanking parameters are measured.
- Vertical Back Porch (VBP) Blanking** Defines the number of blank lines after the active edge of vertical sync but before the first active line.
- Vertical Front Porch (VFP) Blanking** Defines the number of blank lines after the last active line but before the active edge of vertical sync.

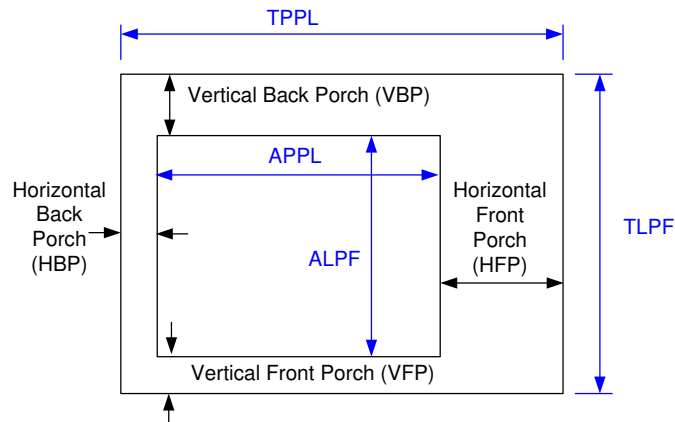


Figure 11-1. Parameter Definitions

11.2 Related Documentation

The following table lists quick access links for associated parts of the DLP chipset.

Table 11-1. Chipset Documentation

| PARTS | PRODUCT FOLDER | SAMPLE & BUY | TECHNICAL DOCUMENTS | TOOLS & SOFTWARE |
|----------|----------------------------|----------------------------|----------------------------|----------------------------|
| DLPA2000 | Click here | Click here | Click here | Click here |
| DLPA2005 | Click here | Click here | Click here | Click here |
| DLP160AP | Click here | Click here | Click here | Click here |

11.3 Related Links

The table below lists quick access links. Categories include technical documents, support and community resources, tools and software, and quick access to order now.

Table 11-2. Related Links

| PARTS | PRODUCT FOLDER | ORDER NOW | TECHNICAL DOCUMENTS | TOOLS & SOFTWARE | SUPPORT & COMMUNITY |
|----------|----------------------------|----------------------------|----------------------------|----------------------------|----------------------------|
| DLPC3420 | Click here | Click here | Click here | Click here | Click here |

11.4 Receiving Notification of Documentation Updates

To receive notification of documentation updates, navigate to the device product folder on ti.com. Click on *Subscribe to updates* to register and receive a weekly digest of any product information that has changed. For change details, review the revision history included in any revised document.

11.5 Support Resources

[TI E2E™ support forums](#) are an engineer's go-to source for fast, verified answers and design help — straight from the experts. Search existing answers or ask your own question to get the quick design help you need.

Linked content is provided "AS IS" by the respective contributors. They do not constitute TI specifications and do not necessarily reflect TI's views; see TI's [Terms of Use](#).

11.6 Trademarks

Pico™ and TI E2E™ are trademarks of Texas Instruments.

MIPI® is a registered trademark of MIPI Alliance.

DLP® is a registered trademark of Texas Instruments.

IntelliBright® is a registered trademark of Texas Instruments.

Arm® and Cortex® are registered trademarks of Arm Limited (or its subsidiaries) in the US and/or elsewhere.

All trademarks are the property of their respective owners.

11.7 Electrostatic Discharge Caution



This integrated circuit can be damaged by ESD. Texas Instruments recommends that all integrated circuits be handled with appropriate precautions. Failure to observe proper handling and installation procedures can cause damage.

ESD damage can range from subtle performance degradation to complete device failure. Precision integrated circuits may be more susceptible to damage because very small parametric changes could cause the device not to meet its published specifications.

11.8 Glossary

[TI Glossary](#) This glossary lists and explains terms, acronyms, and definitions.

12 Mechanical, Packaging, and Orderable Information

The following pages include mechanical, packaging, and orderable information. This information is the most current data available for the designated devices. This data is subject to change without notice and revision of this document. For browser-based versions of this data sheet, refer to the left-hand navigation.

13 Package Option Addendum

13.1 Packaging Information

| Orderable Device | Status (1) | Package Type | Package Drawing | Pins | Package Qty | Eco Plan (2) | Lead/Ball Finish | MSL Peak Temp (3) | Op Temp (°C) | Device Marking(4) (5) |
|------------------|------------|--------------|-----------------|------|-------------|--------------|------------------|----------------------|--------------|-----------------------|
| DLPC3420CZVB | ACTIVE | NFBGA | ZVB | 176 | 260 | TBD | Call TI | Level-3-260C-168 HRS | -30 to 85°C | DLPC342x |

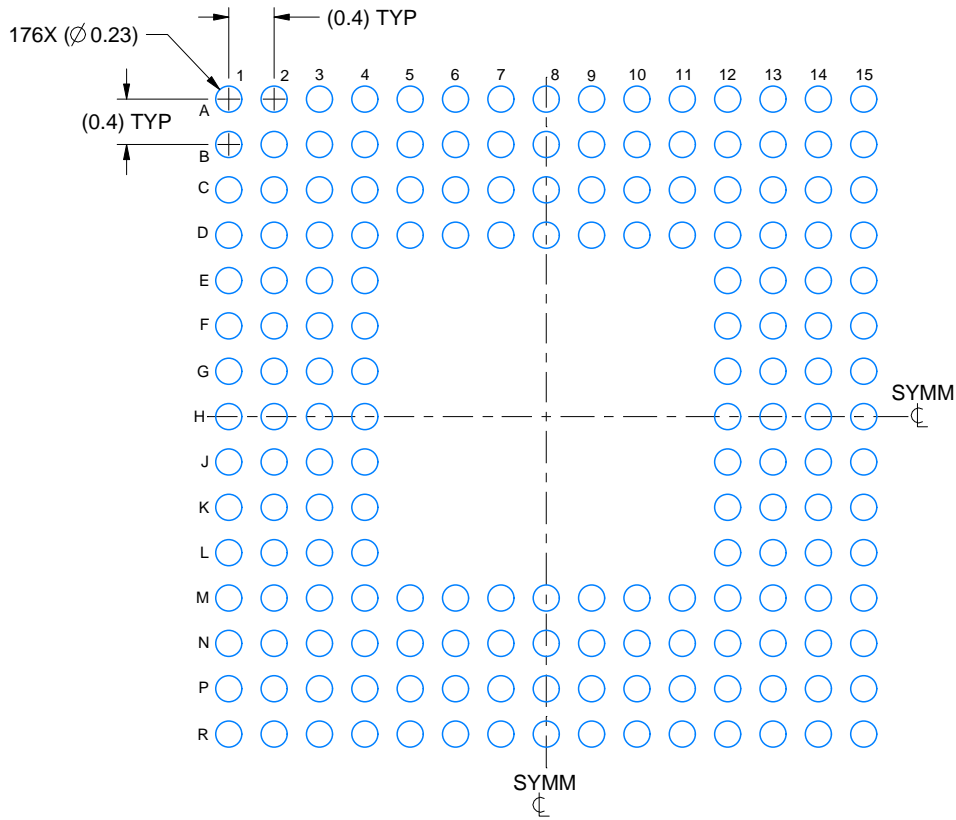
- (1) The marketing status values are defined as follows:
ACTIVE: Product device recommended for new designs.
LIFEBUY: TI has announced that the device will be discontinued, and a lifetime-buy period is in effect.
NRND: Not recommended for new designs. Device is in production to support existing customers, but TI does not recommend using this part in a new design.
PRE_PROD Unannounced device, not in production, not available for mass market, nor on the web, samples not available.
PREVIEW: Device has been announced but is not in production. Samples may or may not be available.
OBSOLETE: TI has discontinued the production of the device.
- (2) Eco Plan - The planned eco-friendly classification: Pb-Free (RoHS), Pb-Free (RoHS Exempt), or Green (RoHS & no Sb/Br) - please check <http://www.ti.com/productcontent> for the latest availability information and additional product content details.
TBD: The Pb-Free/Green conversion plan has not been defined.
Pb-Free (RoHS): TI's terms "Lead-Free" or "Pb-Free" mean semiconductor products that are compatible with the current RoHS requirements for all 6 substances, including the requirement that lead not exceed 0.1% by weight in homogeneous materials. Where designed to be soldered at high temperatures, TI Pb-Free products are suitable for use in specified lead-free processes.
Pb-Free (RoHS Exempt): This component has a RoHS exemption for either 1) lead-based flip-chip solder bumps used between the die and package, or 2) lead-based die adhesive used between the die and leadframe. The component is otherwise considered Pb-Free (RoHS compatible) as defined above.
Green (RoHS & no Sb/Br): TI defines "Green" to mean Pb-Free (RoHS compatible), and free of Bromine (Br) and Antimony (Sb) based flame retardants (Br or Sb do not exceed 0.1% by weight in homogeneous material)
- (3) MSL, Peak Temp. -- The Moisture Sensitivity Level rating according to the JEDEC industry standard classifications, and peak solder temperature.
- (4) There may be additional marking, which relates to the logo, the lot trace code information, or the environmental category on the device
- (5) Multiple Device markings will be inside parentheses. Only on Device Marking contained in parentheses and separated by a "~" will appear on a device. If a line is indented then it is a continuation of the previous line and the two combined represent the entire Device Marking for that device.
Important Information and Disclaimer: The information provided on this page represents TI's knowledge and belief as of the date that it is provided. TI bases its knowledge and belief on information provided by third parties, and makes no representation or warranty as to the accuracy of such information. Efforts are underway to better integrate information from third parties. TI has taken and continues to take reasonable steps to provide representative and accurate information but may not have conducted destructive testing or chemical analysis on incoming materials and chemicals. TI and TI suppliers consider certain information to be proprietary, and thus CAS numbers and other limited information may not be available for release.
 In no event shall TI's liability arising out of such information exceed the total purchase price of the TI part(s) at issue in this document sold by TI to Customer on an annual basis.

EXAMPLE BOARD LAYOUT

ZVB0176A

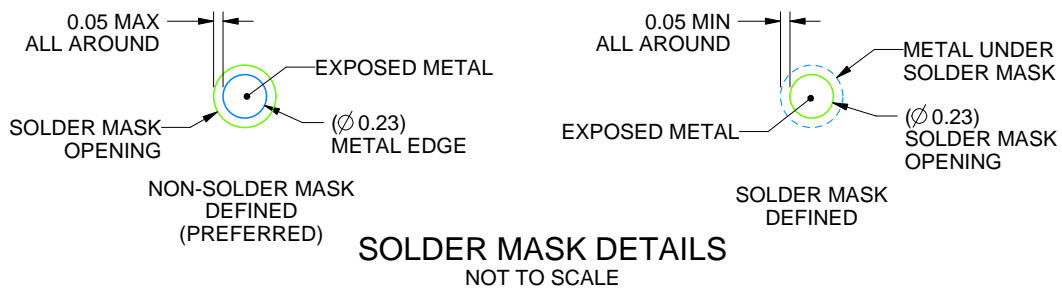
NFBGA - 0.95 mm max height

PLASTIC BALL GRID ARRAY



LAND PATTERN EXAMPLE

EXPOSED METAL SHOWN
SCALE: 15X



SOLDER MASK DETAILS

NOT TO SCALE

4229798/B 11/2023

NOTES: (continued)

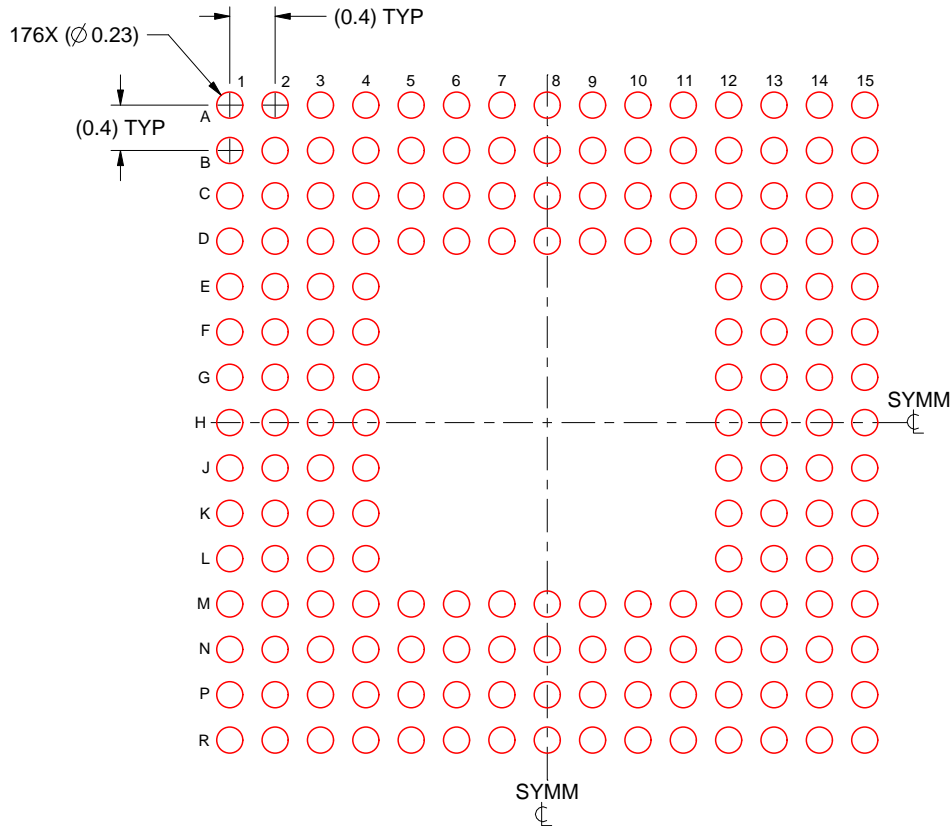
- Final dimensions may vary due to manufacturing tolerance considerations and also routing constraints. For information, see Texas Instruments literature number SPRAA99 (www.ti.com/lit/spraa99).

EXAMPLE STENCIL DESIGN

ZVB0176A

NFBGA - 0.95 mm max height

PLASTIC BALL GRID ARRAY



SOLDER PASTE EXAMPLE
BASED ON 0.1 mm THICK STENCIL
SCALE: 15X

4229798/B 11/2023

NOTES: (continued)

4. Laser cutting apertures with trapezoidal walls and rounded corners may offer better paste release.

IMPORTANT NOTICE AND DISCLAIMER

TI PROVIDES TECHNICAL AND RELIABILITY DATA (INCLUDING DATA SHEETS), DESIGN RESOURCES (INCLUDING REFERENCE DESIGNS), APPLICATION OR OTHER DESIGN ADVICE, WEB TOOLS, SAFETY INFORMATION, AND OTHER RESOURCES "AS IS" AND WITH ALL FAULTS, AND DISCLAIMS ALL WARRANTIES, EXPRESS AND IMPLIED, INCLUDING WITHOUT LIMITATION ANY IMPLIED WARRANTIES OF MERCHANTABILITY, FITNESS FOR A PARTICULAR PURPOSE OR NON-INFRINGEMENT OF THIRD PARTY INTELLECTUAL PROPERTY RIGHTS.

These resources are intended for skilled developers designing with TI products. You are solely responsible for (1) selecting the appropriate TI products for your application, (2) designing, validating and testing your application, and (3) ensuring your application meets applicable standards, and any other safety, security, regulatory or other requirements.

These resources are subject to change without notice. TI grants you permission to use these resources only for development of an application that uses the TI products described in the resource. Other reproduction and display of these resources is prohibited. No license is granted to any other TI intellectual property right or to any third party intellectual property right. TI disclaims responsibility for, and you will fully indemnify TI and its representatives against, any claims, damages, costs, losses, and liabilities arising out of your use of these resources.

TI's products are provided subject to [TI's Terms of Sale](#) or other applicable terms available either on [ti.com](https://www.ti.com) or provided in conjunction with such TI products. TI's provision of these resources does not expand or otherwise alter TI's applicable warranties or warranty disclaimers for TI products.

TI objects to and rejects any additional or different terms you may have proposed.

Mailing Address: Texas Instruments, Post Office Box 655303, Dallas, Texas 75265
Copyright © 2024, Texas Instruments Incorporated

Looking for pricing, stock, or lifecycle information?

Click below to explore more details on WIN SOURCE:

 [View DLPC3420ZVB on WIN SOURCE](#)

 [Texas Instruments](#) Information

Optimize Your Supply Chain with WIN SOURCE Solutions

-  Global Sourcing Solution
-  Obsolete Management
-  Cost Control Management
-  Shortage Management
-  Alternative Solution
-  Excess Inventory Management