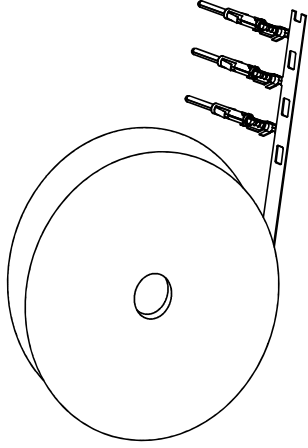




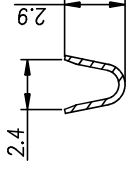
**THE DATASHEET OF
SP16M1F**



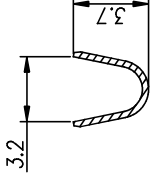
REV	ECO	REL
B1	-	



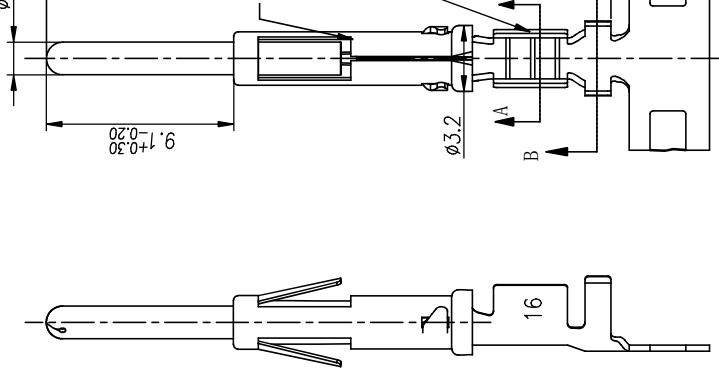
CONTACT ORIENTATION ON ROLL



SECTION A-A



SECTION B-B



NOTES : (UNLESS OTHERWISE SPECIFIED)



1. MATERIAL :
 - 1.1 CONTACT BODY : COPPER ALLOY.
 - 1.2 OUTER SPRING : STAINLESS STEEL.
2. SPECIFICATIONS :
 - 2.1 CURRENT RATING : 13A MAX.
 - 2.2 TERMINATION TYPE : CRIMPING.
 - 2.3 WIRE RANGE : 16~18AWG.
 - 2.4 WIRE INSULATION DIA(MAX): \varnothing 3.2mm.
3. ROHS COMPLIANT.
4. ALL DIMENSIONS ARE FOR REFERENCE USE ONLY.
5. AVAILABLE TOOLS :
 - 5.1 HAND CRIMPER : MFX-3954.
 - 5.2 CRIMP APPLICATOR : MFX-3957.
 - 5.3 EXTRACTION TOOL : QXRT16.

P/N	CONTACT PLATING(MATING AREA)
SP16M1T	TIN PLATING OVER NICKEL.
SP16M1F	GOLD FLASH PLATING OVER NICKEL.
SP16M1G10	10 μ "GOLD PLATING OVER NICKEL
SP16M1G15	15 μ "GOLD PLATING OVER NICKEL
SP16M1G30	30 μ "GOLD PLATING OVER NICKEL.

QUANTITY	PART NUMBER	MATERIAL
UNLESS OTHERWISE SPECIFIED		
1) All dimensions are in metric (mm).		
2) Tolerances are as follows:		
DATE:	APPROV:	SIGNATURE(S) DATE
2-PL DEC 40'15	AWN	
3-PL DEC 40'08		CHECKED: \neq 1/64
		ENGINEER: \neq 1/64
		APPROVAL: Δ
MATERIAL SPECIFICATIONS		
CUSTOMER:		
THIS DRAWING IS SUPPLIED FOR INFORMATION ONLY. IT IS NOT TO BE USED FOR PRODUCTION. ALL DIMENSIONS, MATERIALS, SPECIFICATIONS AND PERFORMANCE SHOWN HEREON ARE THE PROPERTY OF MATEF. ANY REPRODUCTION OR MODIFICATION OF REPRODUCTION ARE IMPLIED. ALL DIMENSIONS ARE TO UNLESS OTHERWISE SPECIFIED. MANUFACTURING VARIATIONS.		
PROCESS SPECIFICATIONS		
NEXT ASSY:		

Looking for pricing, stock, or lifecycle information?

Click below to explore more details on WIN SOURCE:

-  [View SP16M1F on WIN SOURCE](#)
-  [Amphenol Sine Systems Corp Information](#)

Optimize Your Supply Chain with WIN SOURCE Solutions

-  Global Sourcing Solution
-  Obsolete Management
-  Cost Control Management
-  Shortage Management
-  Alternative Solution
-  Excess Inventory Management