



**THE DATASHEET OF
OP0200000000G**



| | | | | | | |
|------|---|------|---|-------------|---|------|
| 1 | 2 | 3 | 4 | 5 | 6 | 7 |
| SIGN | | DATE | | DESCRIPTION | | APPR |
| △ | | | | | | |

THIS IS CAD DRAWING, DO NOT REVISE MANUALLY!!!

Material:

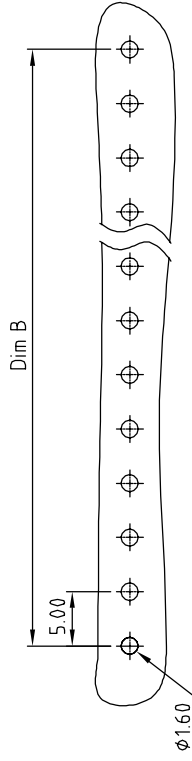
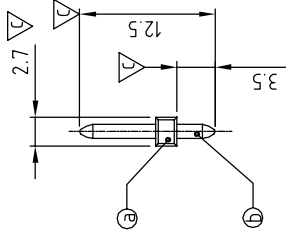
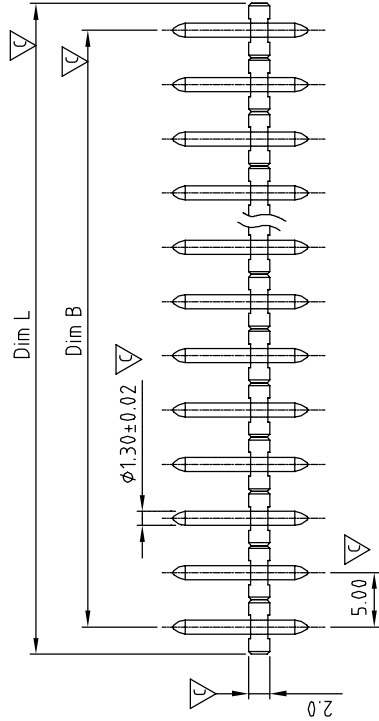
- Item ③ Terminal(housing): Thermoplastic (UL94V-0)
- Item ④ Contact pin: Brass
- Electrical:
 - UL / VDE / TUV
 - 300V / 300V /300V
 - 15A / 12A/ 15A
- Voltage rating: 300V / 300V /300V
- Current rating: 15A / 12A/ 15A
- Withstanding Voltage: 1.6KV / 2.5KV /2.5KV
- Operating temperature: -40°C to +115°C (-40°C to +130°C)
- Soldering temperature: PA66,260°C±5°C/5 Sec (PA46,280°C/10Sec)
- Safety Approval:
- Critical dimension:

OP XX 00 X X XXXX G

POLES
02 pole
" "
24 pole

G RoHS compliant (lead<4%)
In copper Alloy
0000: Standard
Any special item by customer request.
please contact sales department.

- 0 Tin plated 200u"
- 1 Gold plating 10u"
- 2 Gold flash



P.C.B. LAYOUT

| | Dim L | Dim B |
|--------|-------|-------|
| 2-5p | ±0.10 | ±0.10 |
| 6-9p | ±0.15 | ±0.15 |
| 10-13p | ±0.20 | ±0.20 |
| 14-17p | ±0.25 | ±0.25 |
| 18-21p | ±0.30 | ±0.30 |
| 22-24p | ±0.40 | ±0.40 |

N = Number of poles
Dim L=Nx5.0
Dim B=(N-1)x5.0

ANYTEK

CUSTOMER COPY
ALL RIGHTS RESERVED. REPRODUCTION OR ISSUE TO THIRD PARTIES IN ANY FORM WHATSOEVER IS NOT PERMITTED WITHOUT WRITTEN AUTHORITY FROM PROPRIETOR. PROPERTY OF ANYTEK TECHNOLOGY CO., LTD

| | | |
|----------|----------------------|-------------------|
| TITLE | OP 5.0 Series 12.5mm | |
| PART NO. | OPxx00xxxxxxG | |
| APPROVED | CHECKED | DESIGNED |
| | | Chen Bo 09/24, 12 |
| | DRAWN | DRAWN |
| | | Chen Bo 09/24, 12 |
| | DWG NO. | 80P0085 |
| | CUST NO. | |
| | UNIT: | mm |
| | SCALE: | NONE |
| | SHEET: | 01/01 |
| | REV.: | B |
| | Tolerance: | X |
| | | X X |
| | | X.XX |
| | | X° |

Looking for pricing, stock, or lifecycle information?

Click below to explore more details on WIN SOURCE:

 [View OP020000000G on WIN SOURCE](#)

 [Amphenol Anytek Information](#)

Optimize Your Supply Chain with WIN SOURCE Solutions

-  Global Sourcing Solution
-  Obsolete Management
-  Cost Control Management
-  Shortage Management
-  Alternative Solution
-  Excess Inventory Management