



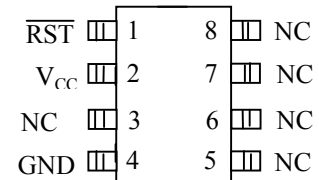
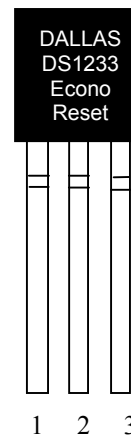
**THE DATASHEET OF
DS1233M-5+**



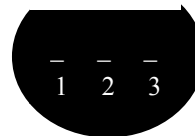
FEATURES

- Automatically restarts microprocessor after power failure
- Maintains reset for 350 ms after V_{CC} returns to an in-tolerance condition
- Reduces need for discrete components
- Precision temperature-compensated voltage reference and voltage sensor
- Low-cost TO-92 package or surface mount 8-pin SOIC packages available
- Internal 5 k Ω pullup resistor
- Compatible with Motorola 68XXX series and HC16 Microprocessors
- Pin function compatible with the Motorola MC33064, MC34064, MC33164, and MC34164
- Operating temperature of -40°C to +85°C

PIN ASSIGNMENT



DS1233M 8-Pin SOIC
(150mil)
See Mech. Drawings
Section on Website



BOTTOM VIEW
TO-92 PACKAGE
See Mech.
Drawings Section
On Website

PIN DESCRIPTIONS

TO-92

- | | |
|--------------------|---------------------------|
| 1 \overline{RST} | - Active Low Reset Output |
| 2 V_{CC} | - Power Supply |
| 3 GND | - Ground |

8-Pin SOIC

- | | |
|------------------|---------------------------|
| \overline{RST} | - Active Low Reset Output |
| V_{CC} | - Power Supply |
| NC | - No Connect |
| GND | - Ground |

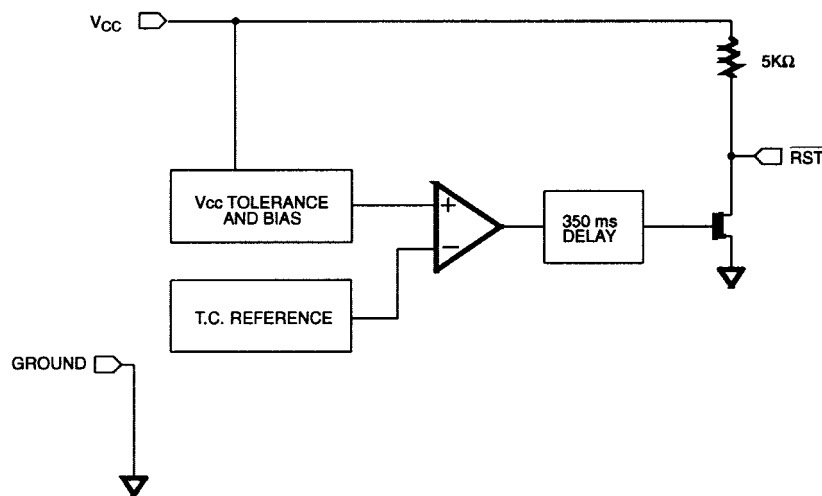
DESCRIPTION

The DS1233M EconoReset uses a precision temperature-compensated reference and comparator circuit to monitor the status of the power supply (V_{CC}). When an out-of-tolerance condition is detected, an internal power-fail signal is generated which forces reset to the active (low) state. When V_{CC} returns to an in-tolerance condition, the reset signal is kept in the active state for approximately 350 ms to allow the power supply and processor to stabilize.

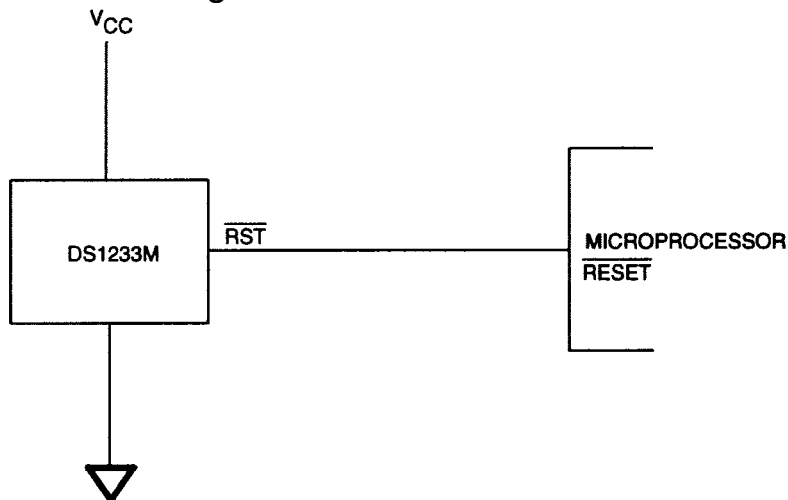
OPERATION - POWER MONITOR

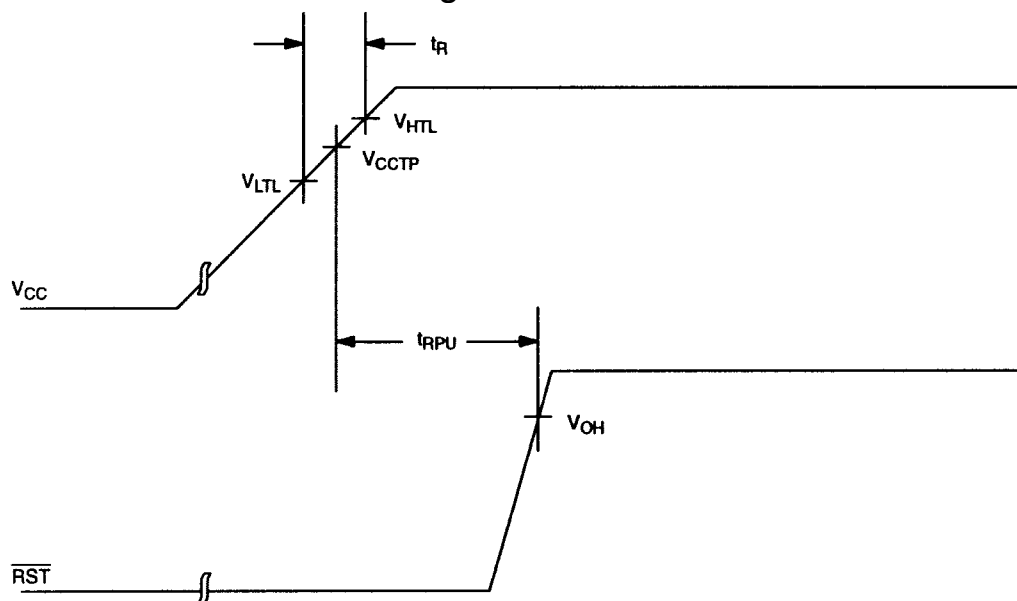
The DS1233M provides the functions of detecting out-of-tolerance power supply conditions and warning a processor-based system of impending power failure. When V_{CC} is detected as out-of-tolerance, as defined by the tolerance of the part selected, the \overline{RST} signal is asserted. On power-up, \overline{RST} is kept active for approximately 350 ms after the power supply has reached the selected tolerance. This allows the power supply and microprocessor to stabilize before \overline{RST} is released.

BLOCK DIAGRAM Figure 1

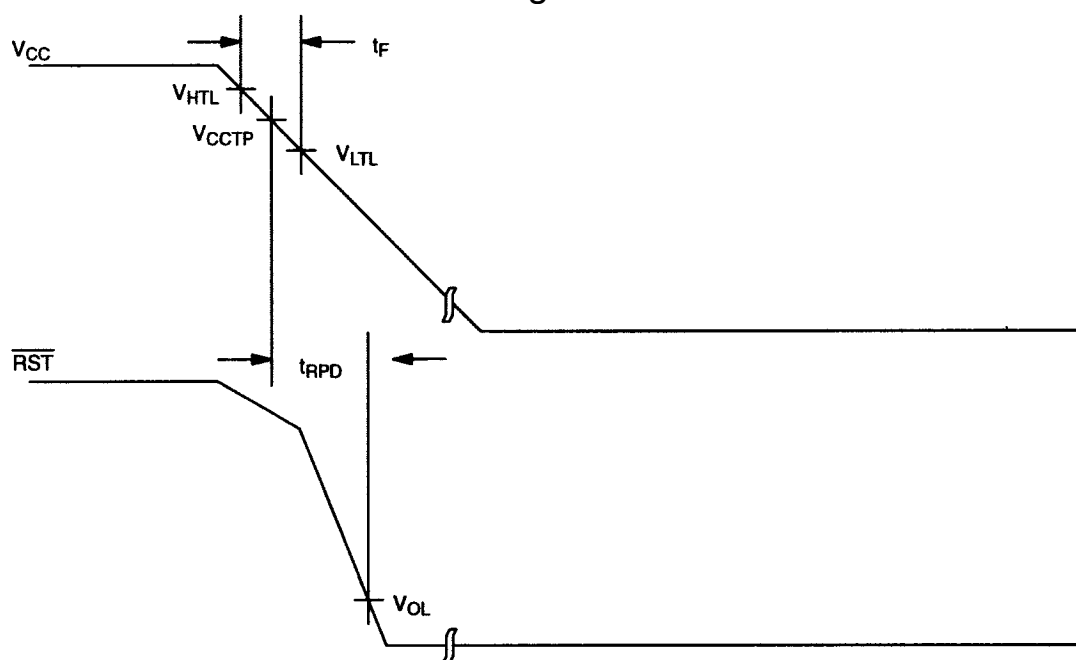


APPLICATION EXAMPLE Figure 2



TIMING DIAGRAM: POWER-UP Figure 3**VOLTAGE TRIP LEVELS**

| PARAMETER | SYMBOL | MIN | TYP | MAX | UNITS | NOTES |
|-------------------------|-----------|-----|-----|------|-------|--------------------------|
| Voltage High Trip Level | V_{HTL} | | | 4.75 | V | DS1233M-5, DS1233M-55 |
| Voltage Low Trip Level | V_{LTL} | | | 4.00 | V | DS1233M-5, DS1233M-55 |
| Voltage High Trip Level | V_{HTL} | | | 3.14 | V | DS1233M-3 |
| Voltage Low Trip Level | V_{LTL} | | | 2.48 | V | DS1233M-3 |

TIMING DIAGRAM: POWER-DOWN Figure 4

ABSOLUTE MAXIMUM RATINGS*

| | |
|--|--------------------------|
| Voltage on V_{CC} Pin Relative to Ground | -0.5V to +7.0V |
| Voltage on I/O Relative to Ground | -0.5V to $V_{CC} + 0.5V$ |
| Operating Temperature | -40°C to +85°C |
| Storage Temperature | -55°C to +125°C |
| Soldering Temperature | 260°C for 10 seconds |

* This is a stress rating only and functional operation of the device at these or any other conditions above those indicated in the operation sections of this specification is not implied. Exposure to absolute maximum rating conditions for extended periods of time may affect reliability.

RECOMMENDED DC OPERATING CONDITIONS (-40°C to +85°C)

| PARAMETER | SYMBOL | MIN | TYP | MAX | UNITS | NOTES |
|----------------|----------|-----|-----|-----|-------|-------|
| Supply Voltage | V_{CC} | 1.2 | | 5.5 | V | 1 |

DC ELECTRICAL CHARACTERISTICS (-40°C to +85°C; $V_{CC} = 1.2V$ to 5.5V)

| PARAMETER | SYMBOL | MIN | TYP | MAX | UNITS | NOTES |
|----------------------------------|------------|---------------|---------------|------|------------|-------|
| Output Voltage @ -500 μA | V_{OH} | $V_{CC}-0.5V$ | $V_{CC}-0.1V$ | | V | 1 |
| Output Current @ 0.4V | I_{OL} | +8 | | | mA | 2,3 |
| Operating Current | I_{CC} | | | 50 | μA | 4 |
| V_{CC} Trip Point (DS1233M-5) | V_{CCTP} | 4.25 | 4.375 | 4.49 | V | 1 |
| V_{CC} Trip Point (DS1233M-55) | V_{CCTP} | 4.5 | 4.625 | 4.75 | V | 1 |
| V_{CC} Trip Point (DS1233M-3) | V_{CCTP} | 2.64 | 2.72 | 2.8 | V | 1 |
| Output Capacitance | C_{OUT} | | | 10 | pF | |
| Internal Pullup Resistor | R_P | 3.75 | 5 | 6.50 | k Ω | |

AC ELECTRICAL CHARACTERISTICS (-40°C to +85°C; $V_{CC} = 1.2V$ to 5.5V)



| PARAMETER | SYMBOL | MIN | TYP | MAX | UNITS | NOTES |
|--|-----------|-----|-----|-----|---------|-------|
| Reset Active Time | t_{RST} | 200 | 350 | 500 | ms | |
| V_{CC} Detect to \overline{RST} | t_{RPD} | | 2 | 10 | μs | |
| V_{CC} Slew Rate ($V_{HTL} - V_{LTL}$) | t_F | 300 | | | μs | |
| V_{CC} Slew Rate ($V_{LTL} - V_{HTL}$) | t_R | 0 | | | ns | |
| V_{CC} Detect to RST | t_{RPU} | 200 | 350 | 500 | ms | 5 |

NOTES:

1. All voltages are referenced to ground.
2. Measured with $V_{CC} \geq 2.7V$.
3. A 1 k Ω external resistor may be required in some applications for proper operation of the microprocessor reset control circuit.
4. Measured with outputs open.
5. $t_R = 5 \mu s$.

Looking for pricing, stock, or lifecycle information?

Click below to explore more details on WIN SOURCE:

-  [View DS1233M-5+ on WIN SOURCE](#)
-  [Maxim Integrated Information](#)

Optimize Your Supply Chain with WIN SOURCE Solutions

-  Global Sourcing Solution
-  Obsolete Management
-  Cost Control Management
-  Shortage Management
-  Alternative Solution
-  Excess Inventory Management