



**THE DATASHEET OF
TLS A 040 T3J LFS**



TLS Series Soft Sound Tact Switch

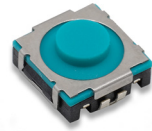
NEW

Features/Benefits

- New soft sound
- Soft actuator
- IP54
- Long life
- J terminations
- Tape & reel

Typical Applications

- Automotive interior controls
- Automatic gear shift paddle
- Steering wheel
- Window lifter
- Seat adjustment module



Tactile Switches

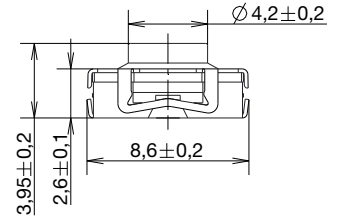
Type	Force (N)	Tactile Feeling (%)	Travel (mm)	Life (cycles)
TLS A 040J LFS	4 ± 0.8	50 ± 15	0.9 ± 0.3	1,000,000
TLS A 070J LFS	7 ± 1.5			500,000
TLS A 100J LFS	10 ± 2			300,000
TLS A 040 T3J LFS	4 ± 0.8	30 ± 15	0.9 ± 0.3	1,000,000
TLS A 070 T3J LFS	7 ± 1.5			500,000
TLS A 100 T3J LFS	10 ± 2			300,000
TLS B 040J LFS	4 +1.0/-0.5	50 ± 15	0.75 ± 0.2	1,000,000
TLS B 060J LFS	6 +1.5/-0.75			500,000

POWER: 10µ VA min. / 0.8 VA max.

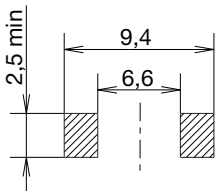
VOLTAGE: DC 1V min. / 16 V max.

CURRENT: 10µA min. / 50 mA max.

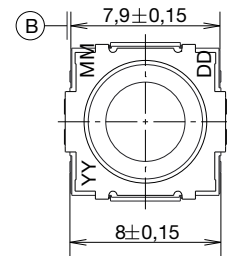
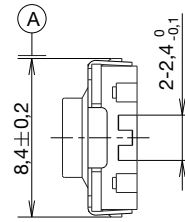
OPERATING TEMPERATURE: -40°C / +90°C



PCB LAYOUT



CIRCUIT DIAGRAM



Packaging

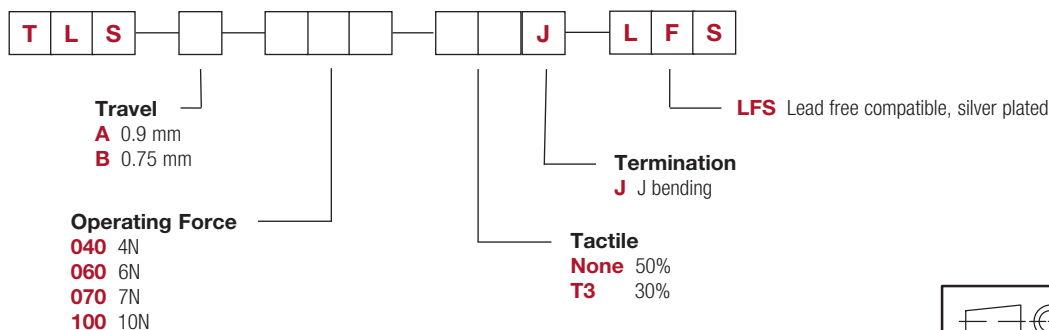
Switches in reels of 900 pieces.

Dimensions of reels according to EIA 481B. External diameter 330 mm.

How To Order

Our easy build-a-switch concept allows you to mix and match options to create the switch you need. To order, select desired option from each category and place it in the appropriate box.

For any part number different from those listed above, please consult your local representative.



Dimensions are shown: mm
 Specifications and dimensions subject to change



29 Jun 21

Looking for pricing, stock, or lifecycle information?

Click below to explore more details on WIN SOURCE:

- ⊖ [View TLS A 040 T3J LFS](#) on WIN SOURCE
- ⊖ [C&K Components](#) Information

Optimize Your Supply Chain with WIN SOURCE Solutions

- ✓ Global Sourcing Solution
- ✓ Obsolete Management
- ✓ Cost Control Management
- ✓ Shortage Management
- ✓ Alternative Solution
- ✓ Excess Inventory Management