

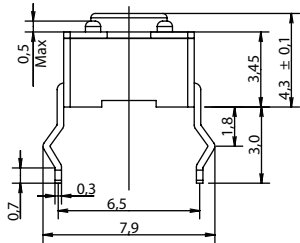


**THE DATASHEET OF
PTS645VH39-2 LFS**

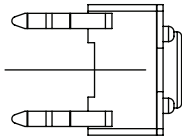
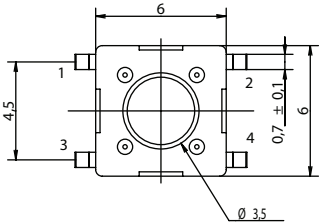
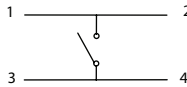


TERMINATION

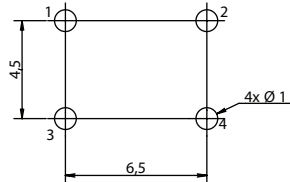
S STRAIGHT



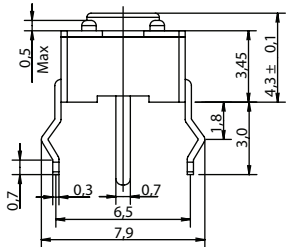
SCHEMATIC



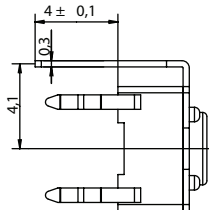
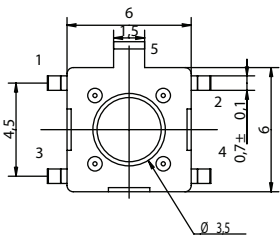
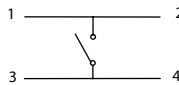
PCB LAYOUT



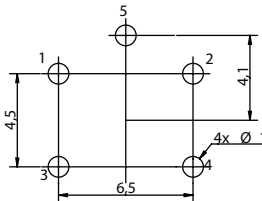
T STRAIGHT WITH ESD PIN



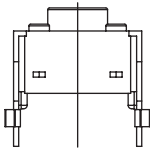
SCHEMATIC



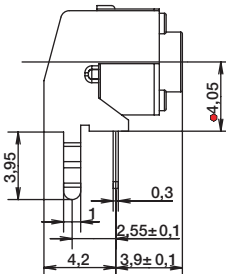
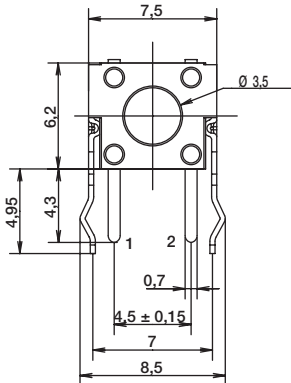
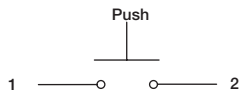
PCB LAYOUT



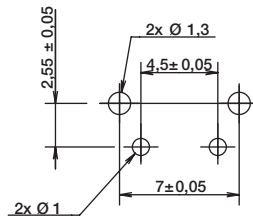
V VERTICAL THT



SCHEMATIC



PCB LAYOUT



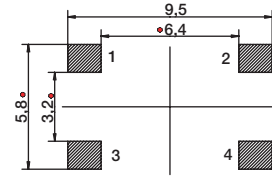
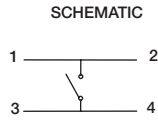
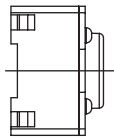
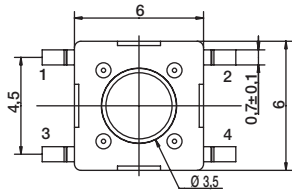
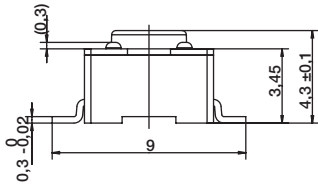
Dimensions are shown: mm
Specifications and dimensions subject to change



PTS645 Series 6 mm Tact Switches

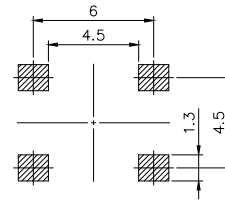
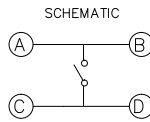
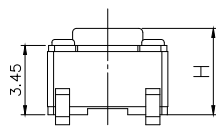
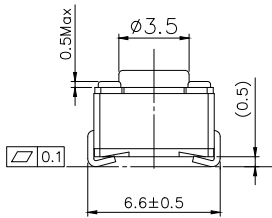
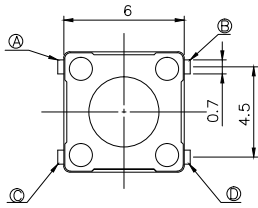
TERMINATION

SMT G Type



PCB LAYOUT

SMT J Type



PCB LAYOUT



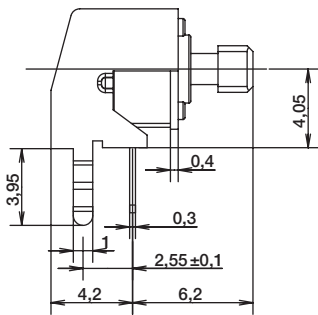
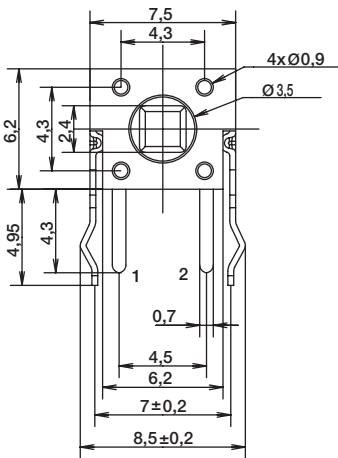
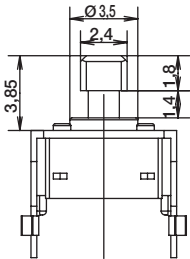
B

Tactile Switches

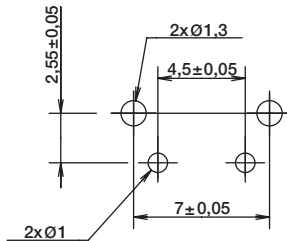
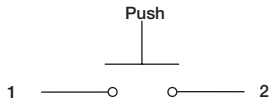
ACTUATOR SHAPE

J SQUARE ACTUATOR

VERTICAL THT - FOR 6.15MM LENGTH ONLY

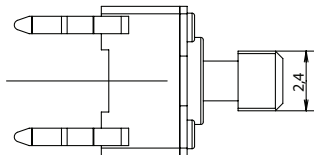
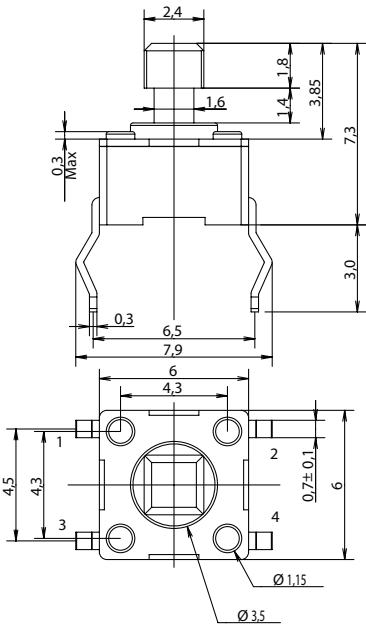


SCHEMATIC

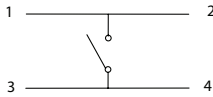


RECOMMENDED PCB LAYOUT

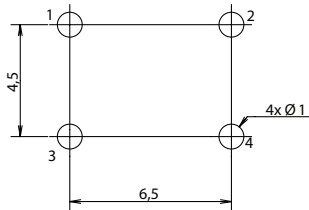
STRAIGHT THT - FOR 7.3MM HEIGHT ONLY



SCHEMATIC



RECOMMENDED PCB LAYOUT



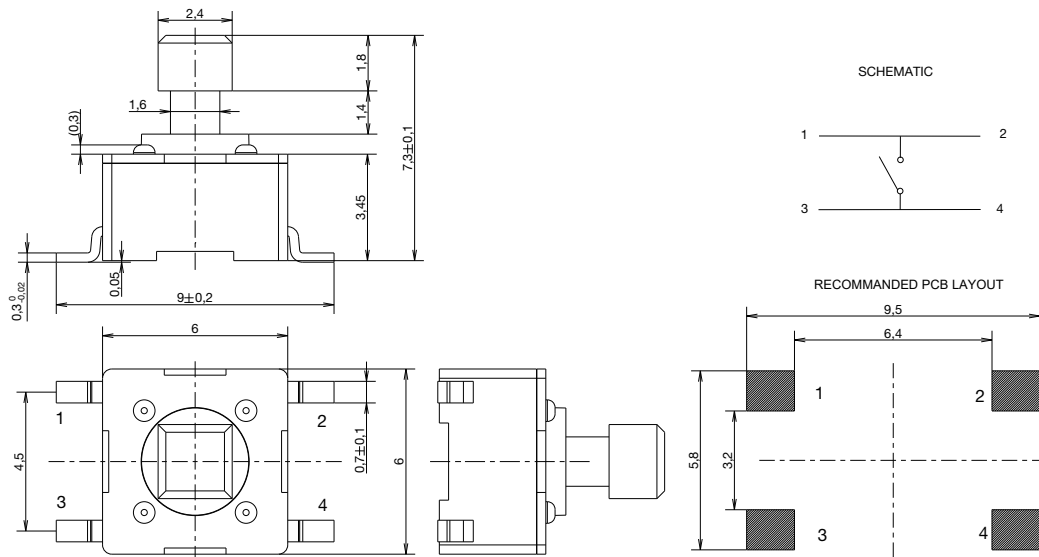
Dimensions are shown: mm
Specifications and dimensions subject to change



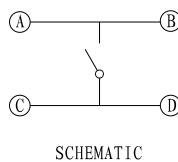
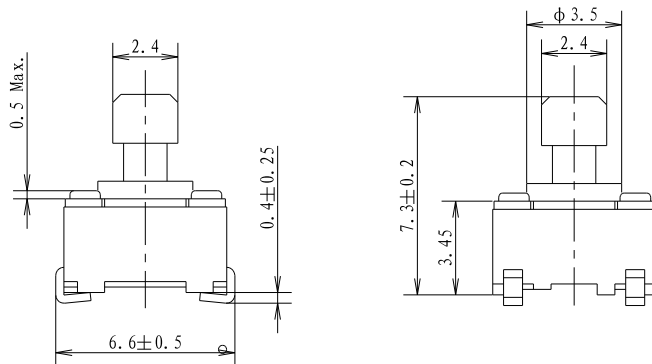
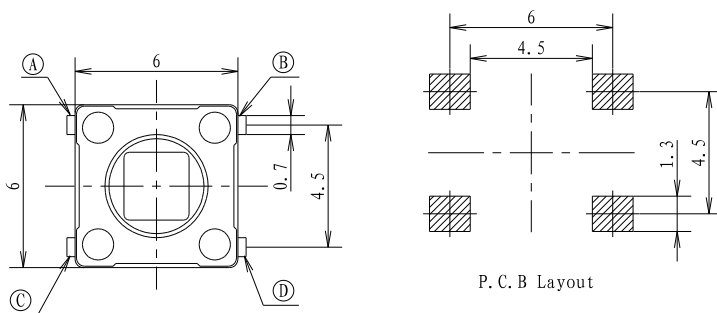
PTS645 Series 6 mm Tact Switches

ACTUATOR SHAPE

STRAIGHT SMT G TYPE - FOR 7.3MM HEIGHT ONLY



STRAIGHT SMT J TYPE - FOR 7.3MM HEIGHT ONLY

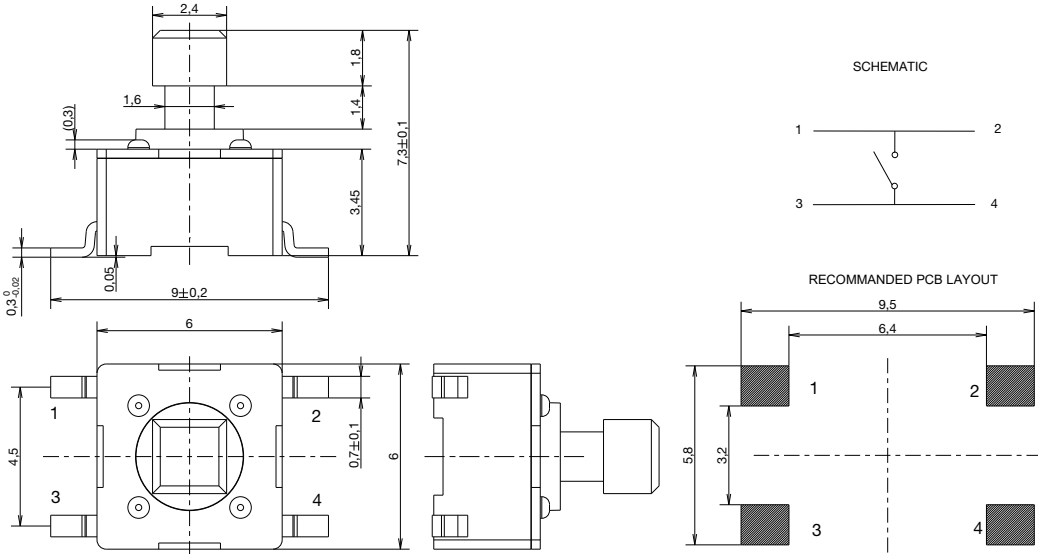


Dimensions are shown: mm
Specifications and dimensions subject to change

PTS645 Series 6 mm Tact Switches

ACTUATOR SHAPE

STRAIGHT SMT - FOR 7.3MM HEIGHT ONLY



Tactile Switches

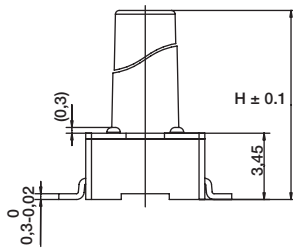
B

PTS645 Series 6 mm Tact Switches

ACTUATION FORCE

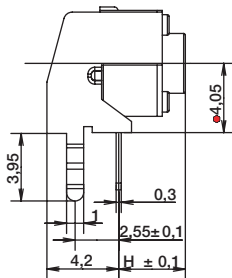
| OPTION CODE | FORCE |
|-------------|-----------------|
| L | 130 grams Black |
| M | 160 grams Blue |
| H | 200 grams Gray |
| K | 260 grams Red |

ACTUATOR HEIGHT



Switch height from PCB for S and T only

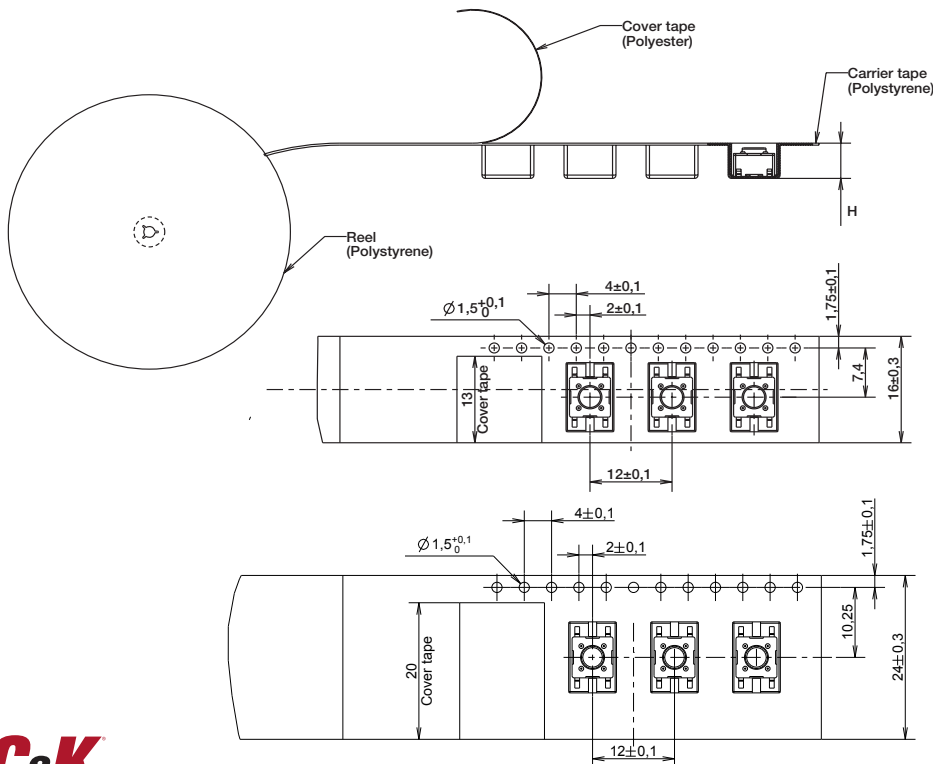
| OPTION CODE | DIMENSION H | TERMINATION | SCHEMATIC | |
|-------------|-------------|-------------------|-----------------|--------------|
| | | | Without EMC pin | With EMC pin |
| 43 | 4,3 (.169) | Thru-hole and SMT | | |
| 50 | 5,0 (.197) | Thru-hole and SMT | | |
| 70 | 7,0 (.275) | Thru-hole and SMT | | |
| 95 | 9,5 (.374) | Thru-hole and SMT | | |
| 13 | 13,0 (.512) | SMT | | |



Switch length from front leads for V only

| OPTION CODE | DIMENSION H | TERMINATION | SCHEMATIC | |
|-------------|-------------|-------------|-----------------|--------------|
| | | | Without EMC pin | With EMC pin |
| 31 | 3,15 (.124) | Vertical | | |
| 39 | 3,85 (.151) | Vertical | | |
| 58 | 5,85 (.230) | Vertical | | |
| 83 | 8,35 (.329) | Vertical | | |

TAPE & REEL FOR SMT G TYPE VERSIONS



| OPTION CODE | WIDTH TAPE | POCKET HEIGHT |
|-------------|------------|---------------|
| 43 | 16 ± 0.3 | 5.3 |
| 50 | 16 ± 0.3 | 5.3 |
| 70 | 16 ± 0.3 | 7.3 |
| 73 | 16 ± 0.3 | 7.6 |
| 95 | 24 ± 0.3 | 10.3 |
| 13 | 24 ± 0.3 | 13.3 |

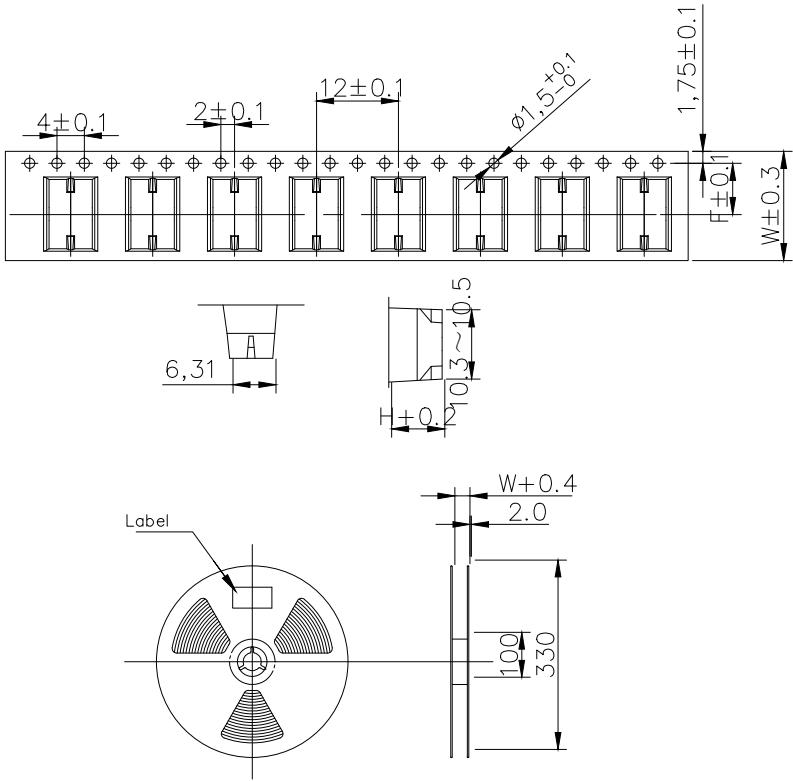


Dimensions are shown: mm
Specifications and dimensions subject to change

PTS645 Series 6 mm Tact Switches

TAPE & REEL FOR SMT J TYPE VERSIONS

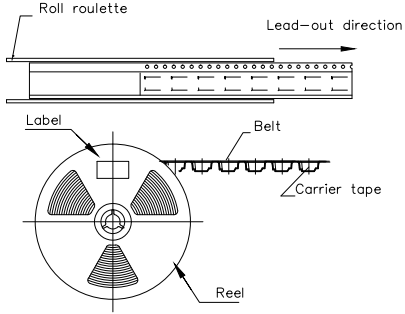
Tactile Switches B



Tape specifications

| Product height (h)mm | Carrier tape width (W)mm | Center distance of carrier tape (F)mm | pcs/reel |
|----------------------|--------------------------|---------------------------------------|----------|
| 4.3 | 16 | 7.5 | 1000 |
| 5.0 | 16 | 7.5 | 1000 |
| 7.0 | 16 | 7.5 | 700 |
| 7.3 | 16 | 7.5 | 700 |
| 9.5 | 24 | 11.5 | 500 |
| 11 | 24 | 11.5 | 500 |
| 13 | 24 | 11.5 | 500 |

Note: The disc rotates counterclockwise. According to the packing shown in the figure, the braid must not be twisted to prevent product deformation;





14 Nov 22






Dimensions are shown: mm
Specifications and dimensions subject to change

Looking for pricing, stock, or lifecycle information?

Click below to explore more details on WIN SOURCE:

-  [View PTS645VH39-2 LFS on WIN SOURCE](#)
-  [C&K Components Information](#)

Optimize Your Supply Chain with WIN SOURCE Solutions

-  Global Sourcing Solution
-  Obsolete Management
-  Cost Control Management
-  Shortage Management
-  Alternative Solution
-  Excess Inventory Management