



**THE DATASHEET OF  
RLP-50+**



# Low Pass Filter

# RLP-50+

50Ω DC to 50 MHz

### Maximum Ratings

Operating Temperature	-40°C to 85°C
Storage Temperature	-55°C to 100°C
RF Power Input	0.5W Max

Permanent damage may occur if any of these limits are exceeded.

### Pin Connections

RF IN	2
RF OUT	6
GROUND	1, 3, 4, 5, 7, 8

### Features

- high rejection
- sharp insertion loss roll off
- excellent VSWR, 1.1:1 typ. @ passband
- aqueous washable

### Applications

- wireless communications
- receivers / transmitters



Generic photo used for illustration purposes only

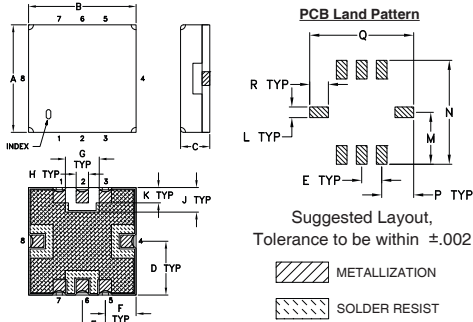
CASE STYLE: GP731

### +RoHS Compliant

The +Suffix identifies RoHS Compliance. See our web site for RoHS Compliance methodologies and qualifications

Available Tape and Reel at no extra cost	
Reel Size	Devices/Reel
7"	10, 20, 50, 100, 200
13"	500, 1000

### Outline Drawing

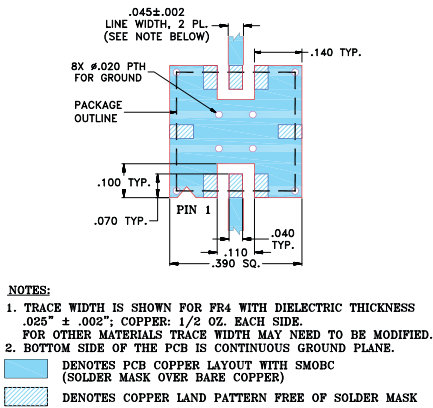


### Outline Dimensions (inch/mm)

A	B	C	D	E	F	G	H	J
.350	.350	.100	.175	.075	.100	.110	.040	.080
8.89	8.89	2.54	4.45	1.93	2.54	2.79	1.02	2.03
K	L	M	N	P	Q	R	wt.	
.050	.040	.195	.390	.120	.390	.070	grams	
1.27	1.02	4.95	9.91	3.05	9.91	1.78	0.25	

Note: Please refer to case style drawing for details

### Demo Board MCL P/N: TB-332 Suggested PCB Layout (PL-176)

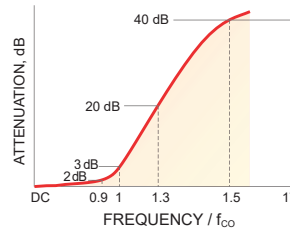


- NOTES:
1. TRACE WIDTH IS SHOWN FOR FR4 WITH DIELECTRIC THICKNESS .025" ± .002"; COPPER: 1/2 OZ. EACH SIDE. FOR OTHER MATERIALS TRACE WIDTH MAY NEED TO BE MODIFIED.
  2. BOTTOM SIDE OF THE PCB IS CONTINUOUS GROUND PLANE.
- DENOTES PCB COPPER LAYOUT WITH SMOBC (SOLDER MASK OVER BARE COPPER)
  - DENOTES COPPER LAND PATTERN FREE OF SOLDER MASK

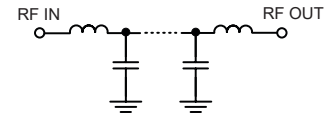
### Low Pass Filter Electrical Specifications (T<sub>AMB</sub> = 25°C)

PASSBAND (MHz)	f <sub>co</sub> , MHz Nom.	STOPBAND (MHz)		VSWR (:1)	
		(Loss > 20dB)	(Loss > 40dB)	Passband Typ.	Stopband Typ.
DC - 50	59	78 - 91	91 - 1000	1.1	20

### Typical Frequency Response

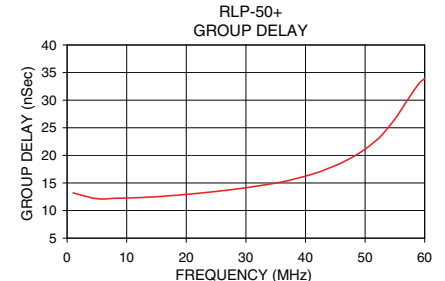
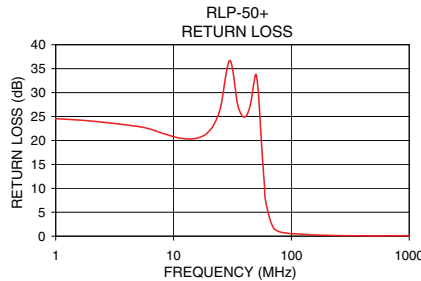
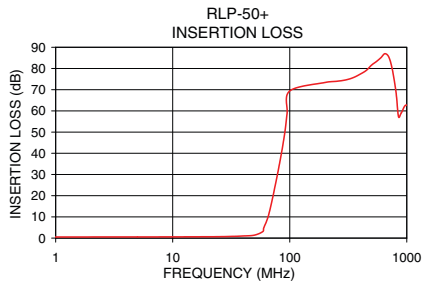


### Functional Schematic



### Typical Performance Data at 25°C

Frequency (MHz)	Insertion Loss (dB)		Return Loss (dB)	Frequency (MHz)	Group Delay (nSec)
	$\bar{x}$	$\sigma$			
0.5	0.52	0.01	24.56	1.0	13.19
20.0	0.64	0.01	21.92	5.0	12.14
40.0	1.00	0.01	24.90	8.0	12.22
50.0	1.40	0.01	33.82	10.0	12.27
56.0	2.06	0.04	18.72	12.0	12.34
59.0	3.06	0.10	10.79	18.0	12.76
61.0	5.48	0.16	7.02	20.0	12.94
65.0	9.55	0.23	3.96	22.0	13.13
70.0	16.59	0.31	1.86	25.0	13.46
75.0	24.42	0.33	1.18	30.0	14.13
78.0	29.07	0.34	0.99	35.0	14.98
91.0	49.88	0.47	0.63	38.0	15.67
97.0	63.18	0.81	0.54	40.0	16.23
100.0	69.26	0.80	0.51	45.0	18.14
200.0	75.27	1.16	0.17	50.0	21.12
400.0	78.87	0.99	0.08	53.0	23.91
700.0	86.84	1.87	0.08	56.0	28.15
1000.0	62.27	0.31	0.10	60.0	33.92




### Notes

- Performance and quality attributes and conditions not expressly stated in this specification document are intended to be excluded and do not form a part of this specification document.
- Electrical specifications and performance data contained in this specification document are based on Mini-Circuit's applicable established test performance criteria and measurement instructions.
- The parts covered by this specification document are subject to Mini-Circuits standard limited warranty and terms and conditions (collectively, "Standard Terms"); Purchasers of this part are entitled to the rights and benefits contained therein. For a full statement of the Standard Terms and the exclusive rights and remedies thereunder, please visit Mini-Circuits' website at [www.minicircuits.com/MCLStore/terms.jsp](http://www.minicircuits.com/MCLStore/terms.jsp)



## Looking for pricing, stock, or lifecycle information?

Click below to explore more details on WIN SOURCE:

 [View RLP-50+ on WIN SOURCE](#)

 [Mini-Circuits Information](#)

## Optimize Your Supply Chain with WIN SOURCE Solutions

-  Global Sourcing Solution
-  Obsolete Management
-  Cost Control Management
-  Shortage Management
-  Alternative Solution
-  Excess Inventory Management