



**THE DATASHEET OF
OS102011MA1QS1**



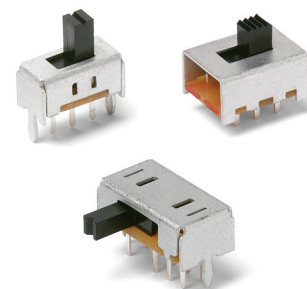
OS Series Miniature Slide Switches

Features/Benefits

- Variety of actuators & terminations
- PC and panel mounting
- Shorting or non-shorting contacts
- RoHS compliant
- Halogen free material

Typical Applications

- Test & measurement equipment
- Computer peripherals & network products
- Consumer products



Specifications

CONTACT RATING: See individual parts.
 MECHANICAL & ELECTRICAL LIFE: 10,000 cycles.
 CONTACT RESISTANCE: 20 m Ω or less.
 INSULATION RESISTANCE: 100 M Ω min. at 500 VDC.
 DIELECTRIC STRENGTH: 500 VAC for 1 minute.
 OPERATING TEMPERATURE: -30°C to +70°C.
 PACKAGING: Bulk

* For RoHS compatible switches contact customer service.

Materials

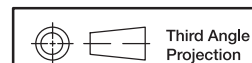
BASE: Phenolic resin.
 ACTUATOR: Standard: POM, Black.
 High Temperature Option: PA46, Black.
 HOUSING: SPCC Sn plated.
 MOVABLE CONTACT: Copper alloy, silver plated.
 STATIONARY CONTACTS: Brass, silver plated.
 TERMINALS: Brass, silver plated.
 TERMINAL SEALED.

NOTE: Specifications and materials listed above are for switches with standard options. For information on specific and custom switches, consult Customer Service Center.

How To Order

Part number list is shown below. For individual part details, please refer to the following pages.

Part Number (Part Description)	Product Details
OS102011MS2QN1	SPDT, 2mm travel, Vertical, PC Thru-hole, Frame H=4.7mm, Tail L=2.8mm, Non shorting
OS102011MS2QN1C	SPDT, 2mm travel, Vertical, PC Thru-hole, Frame H=4.7mm, Tail L=2.8mm, Non shorting, High temperature resin
OS102011MS2QS1	SPDT, 2mm travel, Vertical, PC Thru-hole, Frame H=4.7mm, Tail L=2.8mm, Shorting
OS102011MS2QS1C	SPDT, 2mm travel, Vertical, PC Thru-hole, Frame H=4.7mm, Tail L=2.8mm, shorting, High temperature resin
OS103011MS8QP1	SP3T, 2mm travel, Vertical, PC Thru-hole, Frame H=4.7mm, Tail L=3.8mm, Not specified
OS103011MS8QP1C	SP3T, 2mm travel, Vertical, PC Thru-hole, Frame H=4.7mm, Tail L=3.8mm, Not specified, High temperature resin
OS202011MS2QS1	DPDT, 2mm travel, Vertical, PC Thru-hole, Frame H=4.7mm, Tail L=2.8mm, Shorting
OS202011MS2QN1	DPDT, 2mm travel, Vertical, PC Thru-hole, Frame H=4.7mm, Tail L=2.8mm, Non shorting
OS203011MS1QP1	DP3T, 2mm travel, Vertical, PC Thru-hole, Frame H=4.7mm, Tail L=3.6mm, Not specified
OS202013MT5QN1	DPDT, 3mm travel, Vertical, PC Thru-hole, Frame H=7.0mm, Tail L=2.8mm, Non shorting
OS203013MT7QN1	DP3T, 3mm travel, Vertical, PC Thru-hole, Frame H=7.5mm, Tail L=2.2mm, Non shorting
OS202013MT8QN1	DPDT, 3.2mm travel, Vertical, PC Thru-hole, Frame H=7.0mm, Tail L=2.5mm, Non shorting
OS203013MT8QN1	DP3T, 3.2mm travel, Vertical, PC Thru-hole, Frame H=7.0mm, Tail L=2.5mm, Non shorting
OS203013MT6QN1	DP3T, 3mm travel, Vertical, PC Thru-hole, Frame H=7.0mm, Tail L=2.9mm, Non shorting
OS103012MU1QP1	SP3T, 2.5mm travel, Vertical, PC Thru-hole, Frame H=5.2mm, Tail L=3.7mm, Not specified
OS103012MU2QP1	SP3T, 2.5mm travel, Vertical, PC Thru-hole, Frame H=5.2mm, Tail L=2.5mm, Not specified
OS203012MU5QP1	DP3T, 2.5mm travel, Vertical, PC Thru-hole, Frame H=5.2mm, Tail L=3.7mm, Not specified
OS202011MV4QN1	DPDT, 2mm travel, Vertical, PC Thru-hole, Frame H=8.5mm, Tail L=4.2mm, Non shorting



Third Angle
Projection

Dimensions are shown: Inches (mm)
 Specifications and dimensions subject to change

OS Series Miniature Slide Switches



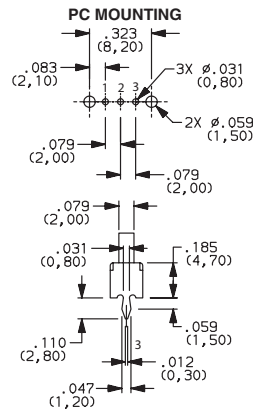
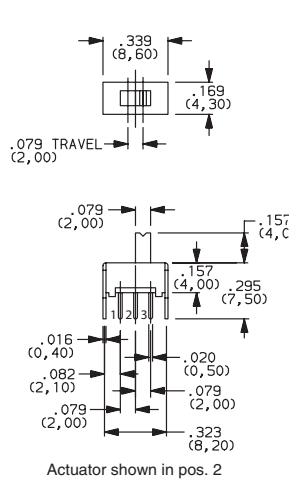
Slide

Part Number (Part Description)	Product Details
OS202011MV4QS1	DPDT, 2mm travel, Vertical, PC Thru-hole, Frame H=8.5mm, Tail L=4.2mm, shorting
OS203011MV9QS1	DP3T, 2mm travel, Vertical, PC Thru-hole, Frame H=8.5mm, Tail L=4.2mm, shorting
OS203011MV9QN1	DP3T, 2mm travel, Vertical, PC Thru-hole, Frame H=8.5mm, Tail L=4.2mm, Non shorting
OS102011MA1QN1	SPDT, 2mm travel, Right angle, PC Thru-hole, Frame H=4.7mm, Tail L=2.8mm, Non shorting
OS102011MA1QN1C	SPDT, 2mm travel, Right angle, PC Thru-hole, Frame H=4.7mm, Tail L=2.8mm, Non shorting, High temperature resin
OS102011MA1QS1	SPDT, 2mm travel, Right angle, PC Thru-hole, Frame H=4.7mm, Tail L=2.8mm, shorting
OS102011MA1QS1C	SPDT, 2mm travel, Right angle, PC Thru-hole, Frame H=4.7mm, Tail L=2.8mm, shorting, High temperature resin
OS103011MA7QP1	SP3T, 2mm travel, Right angle, PC Thru-hole, Frame H=4.7mm, Tail L=3.8mm, Not specified
OS103011MA7QP1C	SP3T, 2mm travel, Right angle, PC Thru-hole, Frame H=4.7mm, Tail L=3.8mm, Not specified, High temperature resin
OS203011MA2QP1	DP3T, 2mm travel, Right angle, PC Thru-hole, Frame H=4.7mm, Tail L=3.7mm, Not specified
OS202011MA0QN1	DPDT, 2mm travel, Right angle, PC Thru-hole, Frame H=4.7mm, Tail L=2.8mm, Non shorting
OS202011MA0QS1	DPDT, 2mm travel, Right angle, PC Thru-hole, Frame H=4.7mm, Tail L=2.8mm, shorting

PART NUMBER	RoHS Compliant	RoHS Compatible	SWITCH FUNCTION	
			POS.1	POS.2
OS102011MS2QN1 (non-shorting)	YES	NO		
OS102011MS2QN1C* (non-shorting)	YES	YES		
OS102011MS2QS1 (shorting)	YES	NO		
OS102011MS2QS1C* (shorting)	YES	YES		
CONN. TERMINALS			1-2	2-3
SCHEMATIC				
SPDT				

CONTACT RATING: 0.1A @ 12 VDC

* "C" option at the end of part number designates high temperature actuators

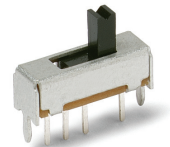
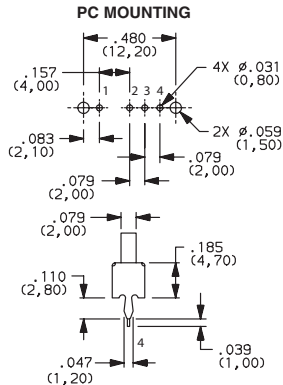
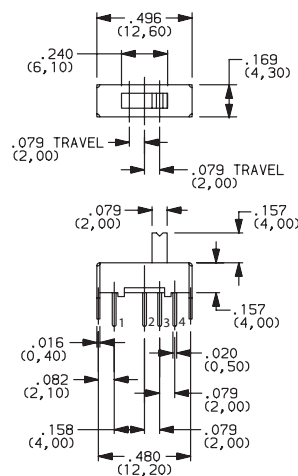


OS102011MS2QN1
SPDT

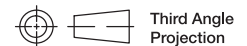
PART NUMBER	ROHS Compliant	ROHS Compatible	SWITCH FUNCTION		
			POS.1	POS.2	POS.3
OS103011MS8QP1 (Non-specified)	YES	NO			
OS103011MS8QP1C* (Non-specified)	YES	YES			
CONN. TERMINALS			1-2	2-3	2-4
SCHEMATIC					
SP3T					

CONTACT RATING: 0.1A @ 12 VDC

* "C" option at the end of part number designates high temperature actuators



OS103011MS8QP1
SP3T



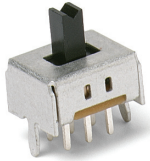
Third Angle Projection

Dimensions are shown: Inches (mm)
Specifications and dimensions subject to change

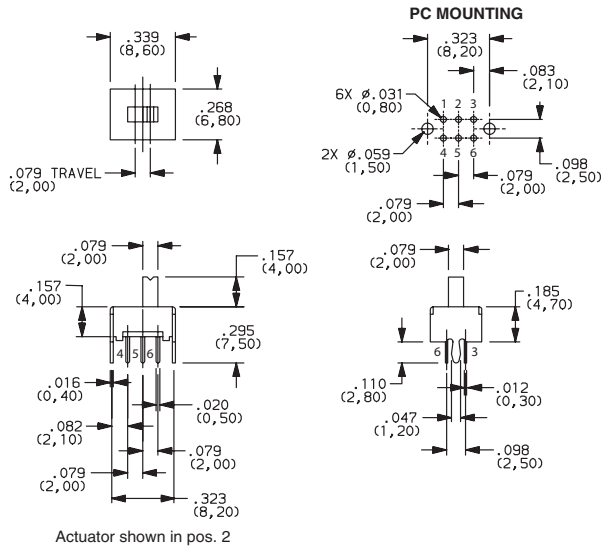


15 Mar 22

OS Series Miniature Slide Switches

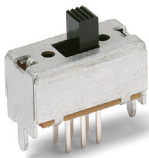


OS202011MS2QS1
DPDT

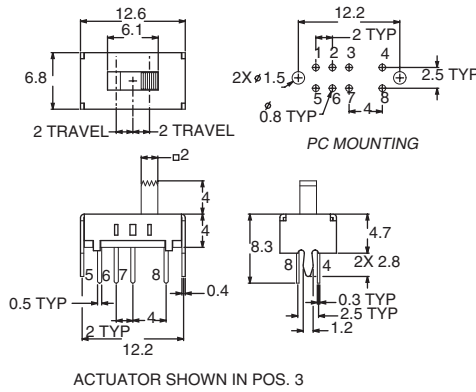


PART NUMBER	RoHS Compliant	RoHS Compatible	SWITCH FUNCTION	
			POS.1	POS.2
OS202011MS2QS1 (Shorting)	YES	NO	ON	ON
OS202011MS2QN1 (Non-shorting)	YES	NO	ON	ON
CONN. TERMINALS			1-2, 4-5	2-3, 5-6
SCHEMATIC				
DPDT				

CONTACT RATING: 0.1A @ 12 VDC

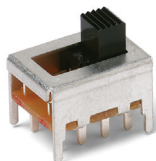


OS203011MS1QP1
DP3T

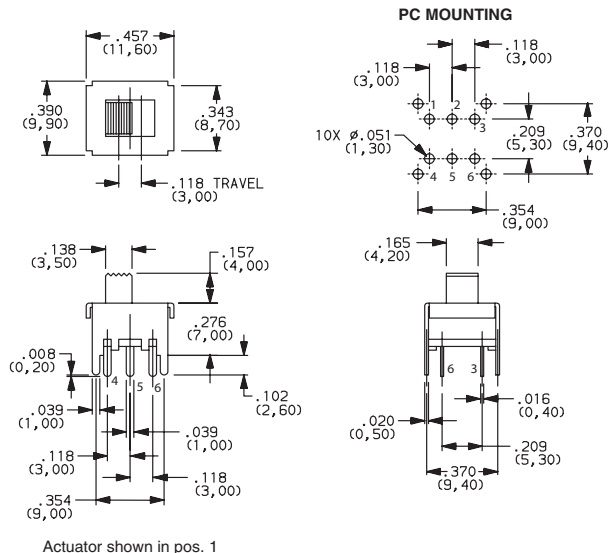


PART NUMBER	ROHS Compliant	ROHS Compatible	SWITCH FUNCTION		
			POS.1	POS.2	POS.3
OS203011MS1QP1 (Non-specified)	YES	NO	ON	ON	ON
CONN. TERMINALS			1-3, 5-7	2-3, 6-7	3-4, 7-8
SCHEMATIC					
DP3T					

CONTACT RATING: 0.3A @ 30 VDC

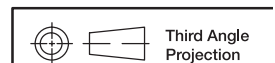


OS202013MT5QN1
DPDT



PART NUMBER	RoHS Compliant	RoHS Compatible	SWITCH FUNCTION	
			POS.1	POS.2
OS202013MT5QN1 (Non-shorting)	YES	NO	ON	ON
CONN. TERMINALS			1-2, 4-5	2-3, 5-6
SCHEMATIC				
DPDT				

CONTACT RATING: 0.3A @ 30 VDC

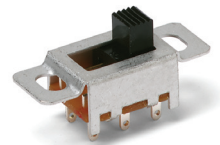
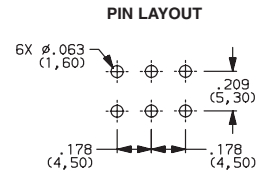
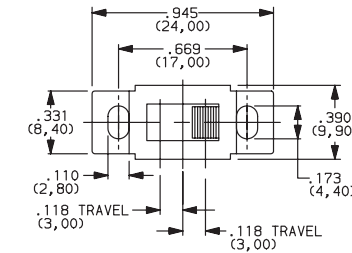


Dimensions are shown: Inch (mm)
Specifications and dimensions subject to change

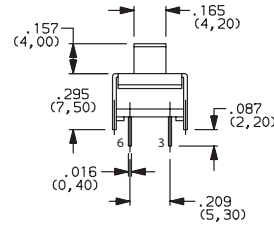
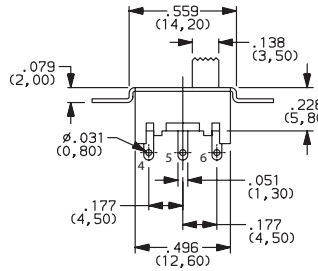
OS Series Miniature Slide Switches

PART NUMBER	ROHS Compliant	ROHS Compatible	SWITCH FUNCTION		
			POS.1	POS.2	POS.3
OS203013MT7QN1 (Non-shorting)	YES	NO	ON	OFF	ON
CONN. TERMINALS			1-2, 4-5		2-3, 5-6
SCHEMATIC					
DP3T					

CONTACT RATING: 0.3A @ 30 VDC



OS203013MT7QN1
DP3T



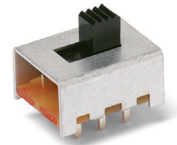
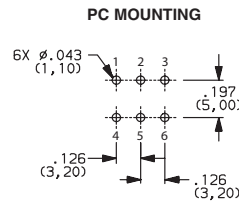
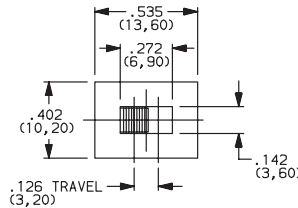
Actuator shown in pos. 3



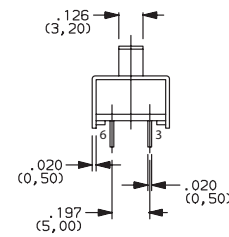
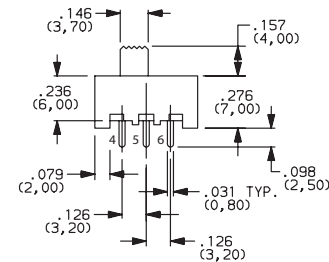
Slide

PART NUMBER	RoHS Compliant	RoHS Compatible	SWITCH FUNCTION	
			POS.1	POS.2
OS202013MT8QN1 (Non-shorting)	YES	NO	ON	ON
CONN. TERMINALS			1-2, 4-5	2-3, 5-6
SCHEMATIC				
DPDT				

CONTACT RATING: 0.3A @ 30 VDC



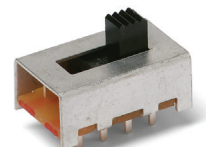
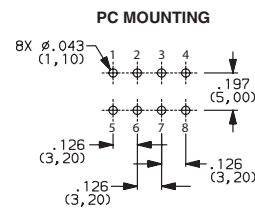
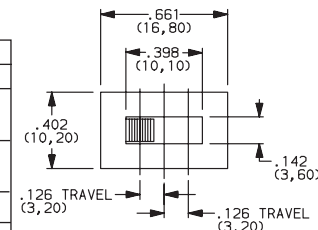
OS202013MT8QN1
DPDT



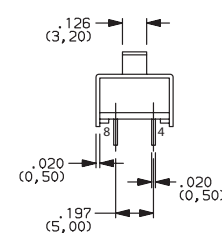
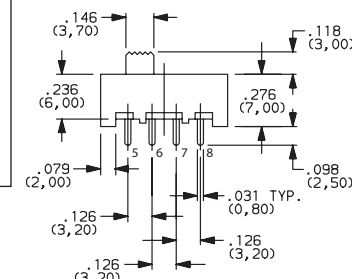
Actuator shown in pos. 1

PART NUMBER	ROHS Compliant	ROHS Compatible	SWITCH FUNCTION		
			POS.1	POS.2	POS.3
OS203013MT8QN1 (Non-shorting)	YES	NO	ON	ON	ON
CONN. TERMINALS			1-2, 5-6	2-3, 6-7	3-4, 7-8
SCHEMATIC					
DP3T					

CONTACT RATING: 0.3A @ 30 VDC



OS203013MT8QN1
DP3T



Actuator shown in pos. 1

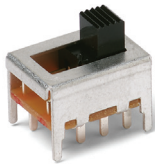


Third Angle Projection
Dimensions are shown: Inches (mm)
Specifications and dimensions subject to change

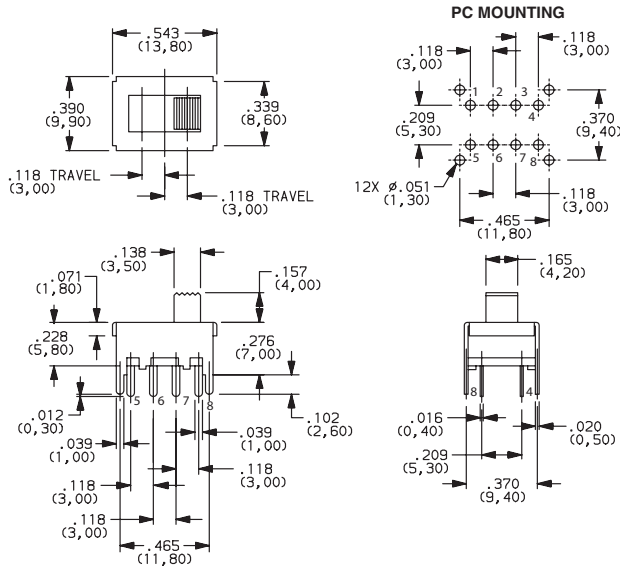


15 Mar 22

OS Series Miniature Slide Switches



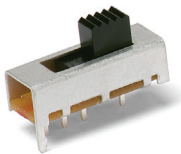
OS203013MT6QN1
DP3T



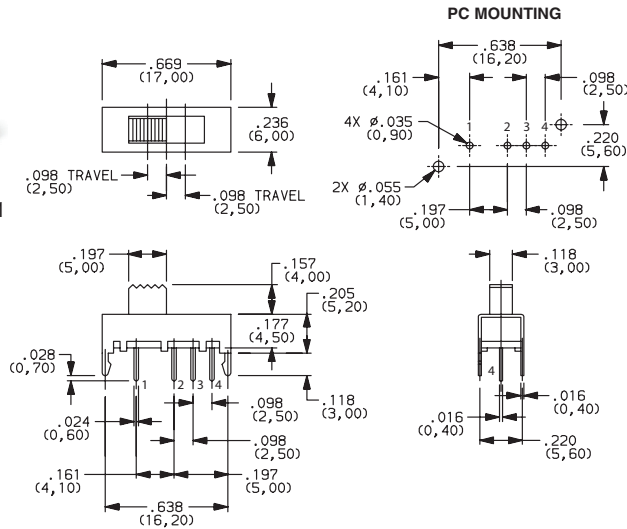
Actuator shown in pos. 3

PART NUMBER	ROHS Compliant	ROHS Compatible	SWITCH FUNCTION		
			POS.1	POS.2	POS.3
OS203013MT6QN1 (Non-shorting)	YES	NO	ON	ON	ON
CONN. TERMINALS			1-2, 5-6	2-3, 6-7	3-4, 7-8
SCHEMATIC					
DP3T					

CONTACT RATING: 0.2A @ 30 VDC



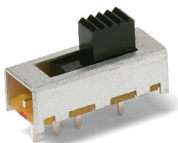
OS103012MU1QP1
SP3T



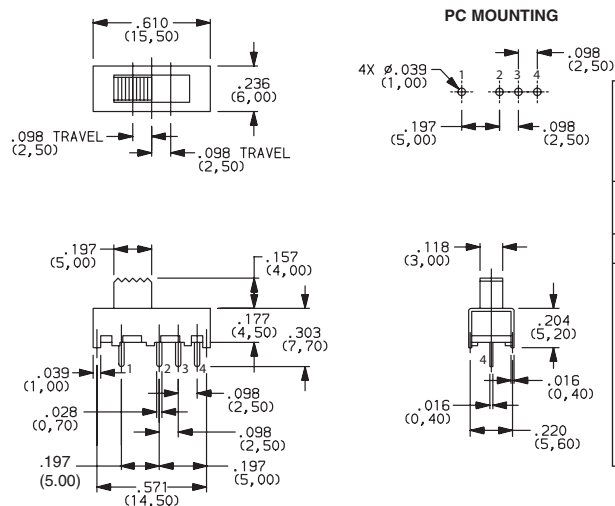
Actuator shown in pos. 1

PART NUMBER	ROHS Compliant	ROHS Compatible	SWITCH FUNCTION		
			POS.1	POS.2	POS.3
OS103012MU1QP1 (Non-shorting)	YES	NO	ON	ON	ON
CONN. TERMINALS			1-2	2-3	2-4
SCHEMATIC					
SP3T					

CONTACT RATING: 0.2A @ 30 VDC



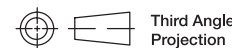
OS103012MU2QP1
SP3T



Actuator shown in pos. 1

PART NUMBER	ROHS Compliant	ROHS Compatible	SWITCH FUNCTION		
			POS.1	POS.2	POS.3
OS103012MU2QP1 (Non-shorting)	YES	NO	ON	ON	ON
CONN. TERMINALS			1-2	2-3	2-4
SCHEMATIC					
SP3T					

CONTACT RATING: 0.2A @ 30 VDC



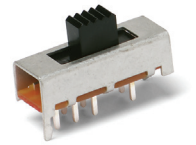
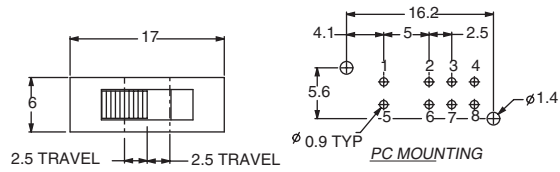
Third Angle Projection

Dimensions are shown: Inch (mm)
Specifications and dimensions subject to change

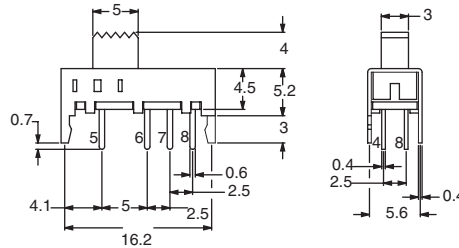
OS Series Miniature Slide Switches

PART NUMBER	ROHS		SWITCH FUNCTION		
	Compliant	Compatible	POS.1	POS.2	POS.3
OS203012MU5QP1 (Non-specified)	YES	NO			
CONN. TERMINALS			1-2, 5-6	2-3, 6-7	2-4, 6-8
SCHEMATIC					
DP3T					

CONTACT RATING: 0.1A @ 30 VDC



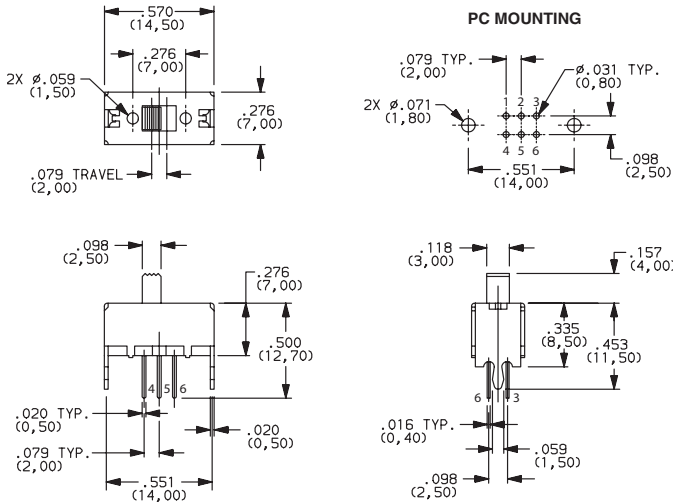
OS203012MU5QP1
DP3T



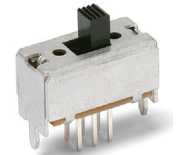
ACTUATOR SHOWN IN POS. 1

PART NUMBER	ROHS		SWITCH FUNCTION	
	Compliant	Compatible	POS.1	POS.2
OS202011MV4QN1 (Non-shorting)	YES	NO		
OS202011MV4QS1 (Shorting)	YES	NO		
CONN. TERMINALS			1-2, 4-5	2-3, 5-6
SCHEMATIC				
DPDT				

CONTACT RATING: 0.1A @ 30 VDC



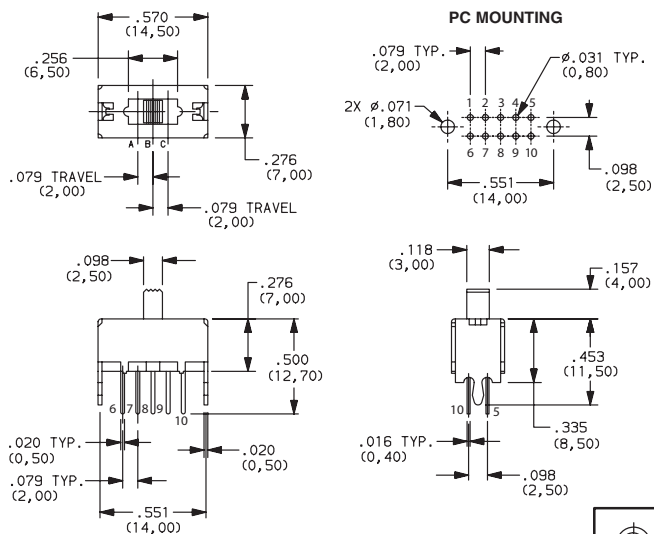
Actuator shown in pos. 1



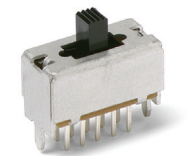
OS202011MV4QN1
DPDT

PART NUMBER	ROHS		SWITCH FUNCTION		
	Compliant	Compatible	POS.1	POS.2	POS.3
OS203011MV9QS1 (Shorting)	YES	NO			
OS203011MV9QN1 (Non-Shorting)	YES	NO			
CONN. TERMINALS			1-2-5 6-7-10	1-3-5 6-8-10	1-4-5 6-9-10
SCHEMATIC					
DP3T					

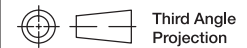
CONTACT RATING: 0.1A @ 30 VDC



Actuator shown in pos. 2(A)



OS203011MV9QS1
DP3T



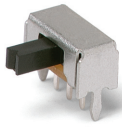
Third Angle Projection

Dimensions are shown: Inches (mm)
Specifications and dimensions subject to change



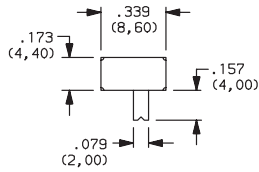
15 Mar 22

OS Series Miniature Slide Switches

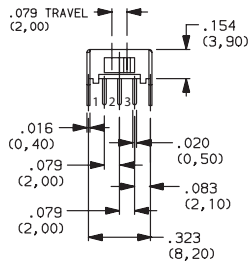
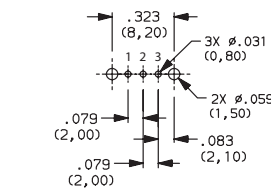


OS102011MA1QN1

SPDT



PC MOUNTING



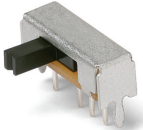
Actuator shown in pos. 2

PART NUMBER	RoHS Compliant	RoHS Compatible	SWITCH FUNCTION	
			POS.1	POS.2
OS102011MA1QN1 (Non-shorting)	YES	NO	ON	ON
OS102011MA1QN1C* (Non-shorting)	YES	YES	ON	ON
OS102011MA1QS1 (Shorting)	YES	NO	ON	ON
OS102011MA1QS1C* (Shorting)	YES	YES	ON	ON
CONN. TERMINALS			1-2	2-3
SCHEMATIC				
SPDT				

CONTACT RATING: 0.1A @ 12 VDC

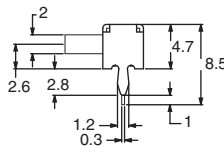
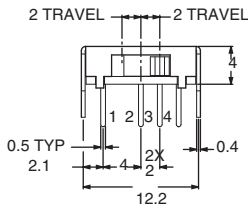
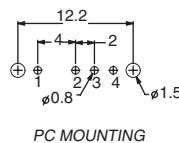
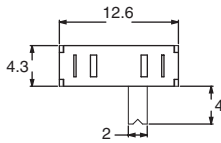
* "C" option at the end of part number designates high temperature actuators

Slide



OS103011MA7QP1

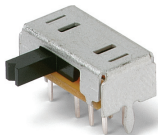
SP3T



PART NUMBER	ROHS Compliant	ROHS Compatible	SWITCH FUNCTION		
			POS.1	POS.2	POS.3
OS103011MA7QP1 (Non-specified)	YES	NO	ON	ON	ON
OS103011MA7QP1C* (Non-specified)	YES	YES	ON	ON	ON
CONN. TERMINALS			1-2	2-3	2-4
SCHEMATIC					
SP3T					

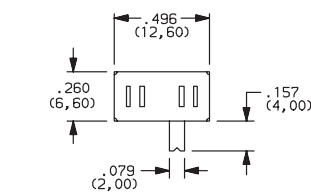
CONTACT RATING: 0.1A @ 12 VDC

* "C" option at the end of part number designates high temperature actuators

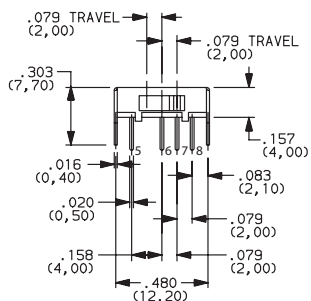
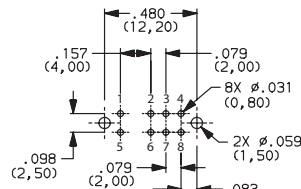


OS203011MA2QP1

DP3T



PC MOUNTING



Actuator shown in pos. 3

PART NUMBER	RoHS Compliant	RoHS Compatible	SWITCH FUNCTION		
			POS.1	POS.2	POS.3
OS203011MA2QP1 (Non-specified)	YES	NO	ON	ON	ON
CONN. TERMINALS			1-2, 5-6	2-3, 6-7	2-4, 6-8
SCHEMATIC					
DP3T					

CONTACT RATING: 0.1A @ 12 VDC



Dimensions are shown: Inch (mm)

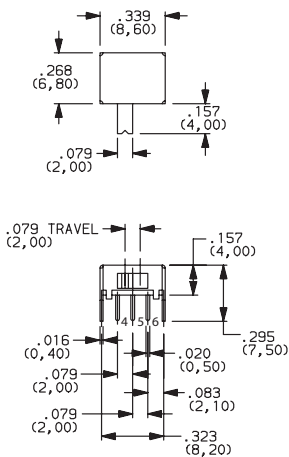
Specifications and dimensions subject to change



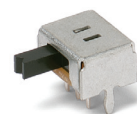
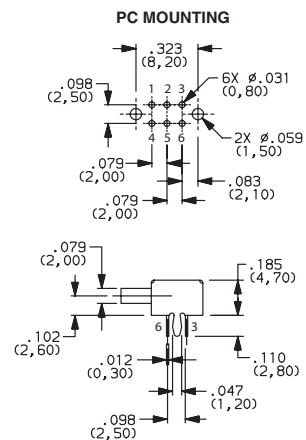
OS Series Miniature Slide Switches

PART NUMBER	RoHS Compliant	RoHS Compatible	SWITCH FUNCTION	
			POS.1	POS.2
OS202011MA0QN1 (Non-shorting)	YES	NO	ON	ON
OS202011MA0QS1 (Shorting)	YES	NO	ON	ON
CONN. TERMINALS			1-2, 4-5	2-3, 5-6
SCHEMATIC				
DPDT				

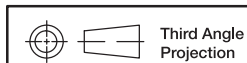
CONTACT RATING: 0.1A @ 12 VDC



Actuator shown in pos. 1





OS202011MA0QN1
DPDT






Dimensions are shown: Inches (mm)
Specifications and dimensions subject to change

Looking for pricing, stock, or lifecycle information?

Click below to explore more details on WIN SOURCE:

-  [View OS102011MA1QS1 on WIN SOURCE](#)
-  [C&K Components Information](#)

Optimize Your Supply Chain with WIN SOURCE Solutions

-  Global Sourcing Solution
-  Obsolete Management
-  Cost Control Management
-  Shortage Management
-  Alternative Solution
-  Excess Inventory Management