



**THE DATASHEET OF
PTS 647 SK70 SMTR2 LFS**



PTS647 Series 4.5 mm Tact Switch

Features/Benefits

- Compact size 4.5 x 4.5 mm
- SMT terminals
- Different actuator heights
- Choice of actuation forces
- Tape & reel

Typical Applications

- Consumer
- Industrial control panels
- Computer products



Part Number	Operating Force (gf)	Life	Height (H)
PTS647 SN38 SMTR2 LFS	100 +/- 50	100,000	3.8 mm
PTS647 SM38 SMTR2 LFS	180 +/- 50	100,000	3.8 mm
PTS647 SK38 SMTR2 LFS	250 +/- 50	100,000	3.8 mm
PTS647 SN50 SMTR2 LFS	100 +/- 50	100,000	5.0 mm
PTS647 SM50 SMTR2 LFS	180 +/- 50	100,000	5.0 mm
PTS647 SK50 SMTR2 LFS	250 +/- 50	100,000	5.0 mm
PTS647 SN70 SMTR2 LFS	100 +/- 50	100,000	7.0 mm
PTS647 SM70 SMTR2 LFS	180 +/- 50	100,000	7.0 mm
PTS647 SK70 SMTR2 LFS	250 +/- 50	100,000	7.0 mm

Mechanical

TRAVEL: 0.25 mm +/- 0.15 mm

Electrical

CONTACT RATING: 50 mA @ 12 V DC.
DIELECTRIC STRENGTH: 250 V AC min.
CONTACT RESISTANCE: 100 mΩ max. initial.
INSULATION RESISTANCE: 100 MΩ min.

Environmental

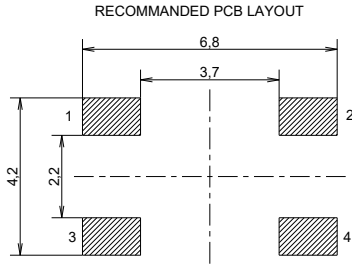
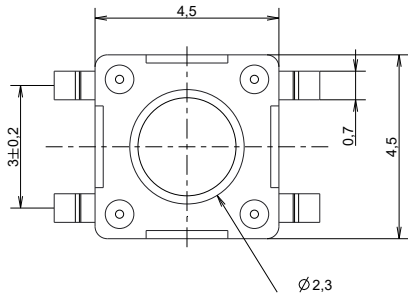
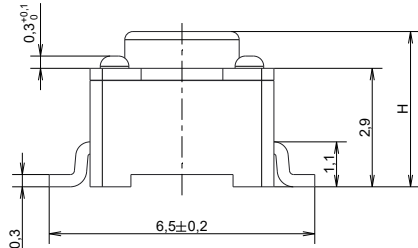
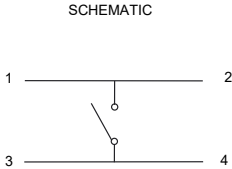
OPERATING TEMPERATURE: -20°C to 70°C

Packaging

In reels of 1,000 pieces for 7.0 mm height
In reels of 1,500 pieces for 5.0 mm height
In reels of 2,000 pieces for 3.8 mm height
Dimensions of reels according to EIA RS481 or IEC 2863.
External diameter 330 mm ± 2 mm.

NOTE:

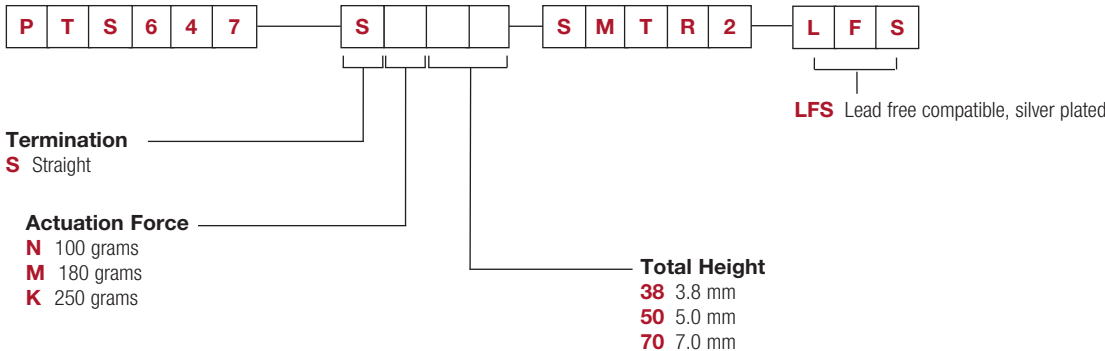
- Specifications listed above are for switches with standard options. For information on specific and custom switches, consult Customer Service Center.
- **The PTS series is not certified for using in Automotive application and no PPAP.** However, in the case of some automotive accessories and specific applications for 2 and 3 wheeled vehicles the PTS is widely used and very suitable. Please contact your local C&K representative to discuss your application and the best switch solution.



How To Order

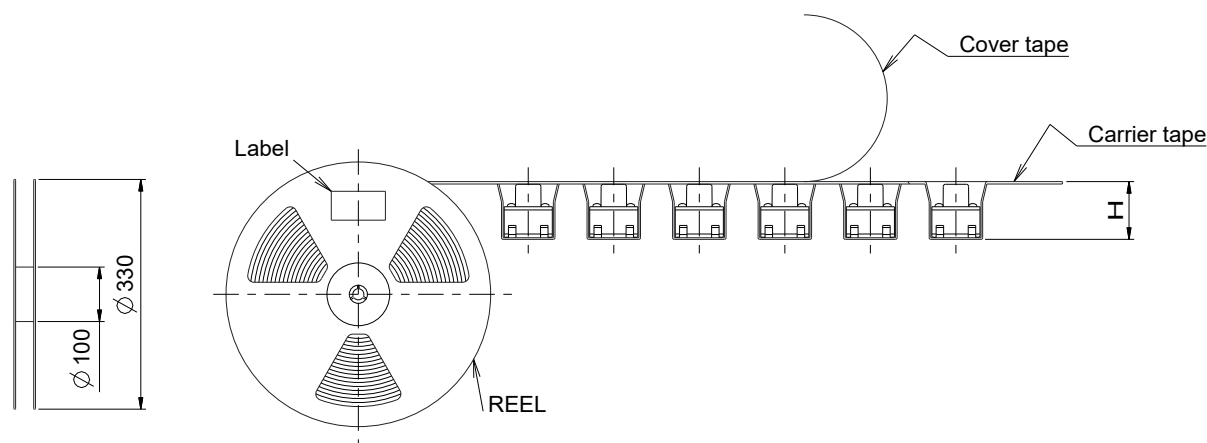
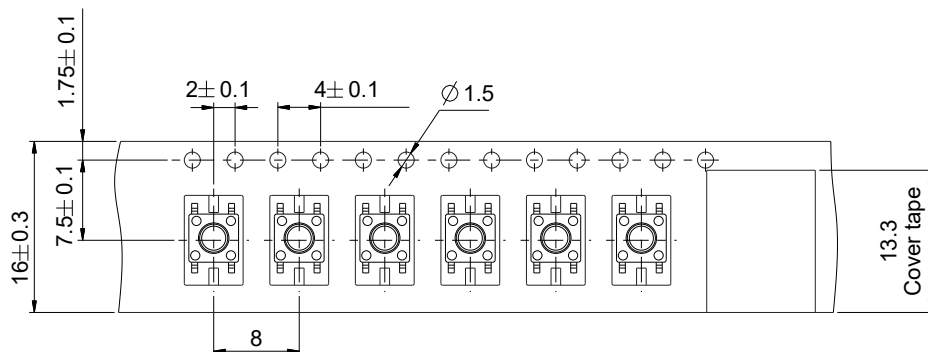
Our easy build-a-switch concept allows you to mix and match options to create the switch you need. To order, select desired option from each category and place it in the appropriate box.

For any part number different from those listed above, please consult your local representative.



PTS647 Series 4.5 mm Tact Switch



TAPE & REEL



Part Number	Pocket Height (H)
PTS647 SN38 SMTR2 LFS	4.2 mm
PTS647 SM38 SMTR2 LFS	4.2 mm
PTS647 SK38 SMTR2 LFS	4.2 mm
PTS647 SN50 SMTR2 LFS	5.4 mm
PTS647 SM50 SMTR2 LFS	5.4 mm
PTS647 SK50 SMTR2 LFS	5.4 mm
PTS647 SN70 SMTR2 LFS	7.2 mm
PTS647 SM70 SMTR2 LFS	7.2 mm
PTS647 SK70 SMTR2 LFS	7.2 mm

Looking for pricing, stock, or lifecycle information?

Click below to explore more details on WIN SOURCE:

-  [View PTS 647 SK70 SMTR2 LFS on WIN SOURCE](#)
-  [C&K Components Information](#)

Optimize Your Supply Chain with WIN SOURCE Solutions

-  Global Sourcing Solution
-  Obsolete Management
-  Cost Control Management
-  Shortage Management
-  Alternative Solution
-  Excess Inventory Management