



**THE DATASHEET OF  
BPXX00060635221M00**



## BPXX Series



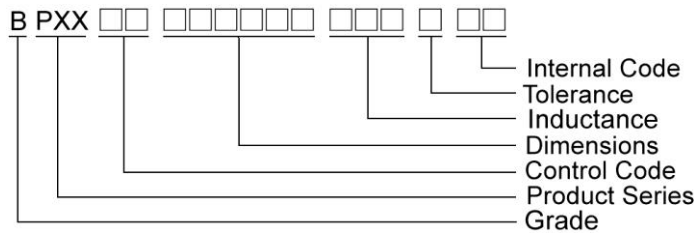
### Features

- RoHS compliant
- Low Rdc and high saturation current for portable DC to DC converter line
- High magnetic shielding construction provides high resolution for EMC protection
- Support lead-free soldering

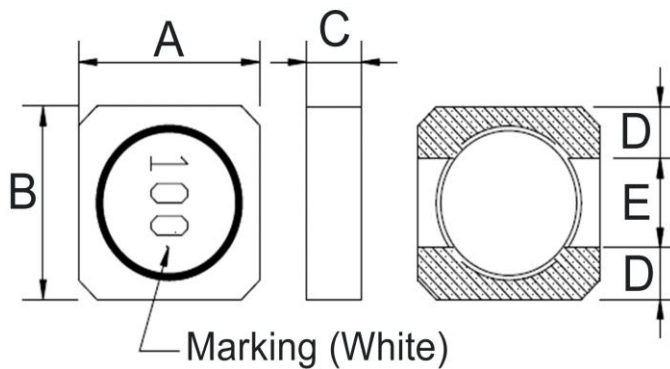
### Applications

- Notebook PC
- Set top box
- LCD TV
- LCD displays
- Portable communication device
- DC/DC converters
- SSD
- Networking

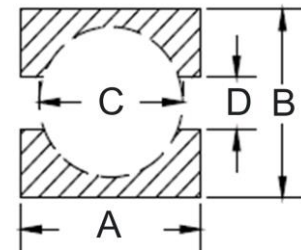
### Product Identification



### Shape and Dimensions



### Recommended Pattern

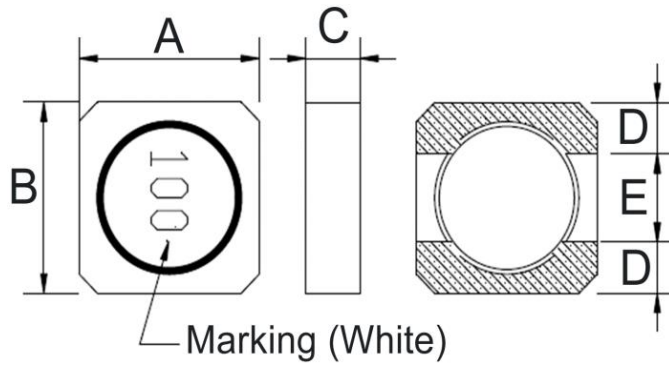


Dimensions in mm

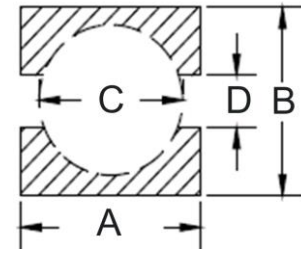
TYPE	Shape and Dimensions					Recommended Pattern			
	A	B	C	D	E	A	B	C	D
BPXX00030310	3.0±0.2	3.0±0.2	1.0Max	0.9	1.2	3.3	3.3	2.2	1.0
BPXX00030312	3.0±0.2	3.0±0.2	1.2Max	0.9	1.2	3.3	3.3	2.2	1.0
BPXX00030315	3.0±0.2	3.0±0.2	1.5Max	0.9	1.2	3.3	3.3	2.2	1.0
BPXX00030320	3.0±0.2	3.0±0.2	2.0Max	0.9	1.2	3.3	3.3	2.2	1.0

# SMD Shielded Power Inductors – BPXX Series

## Shape and Dimensions



## Recommended Pattern



Dimensions in mm

TYPE	Shape and Dimensions					Recommended Pattern			
	A	B	C	D	E	A	B	C	D
BPXX00040412	4.0±0.2	4.0±0.2	1.2Max	1.1	1.8	4.4	4.4	2.9	1.8
BPXX00040418	4.0±0.2	4.0±0.2	1.8Max	1.1	1.8	4.4	4.4	2.9	1.8
BPXX00040420	4.0±0.2	4.0±0.2	2.0Max	1.1	1.8	4.4	4.4	2.9	1.8
BPXX00040430	4.0±0.2	4.0±0.2	3.0Max	1.1	1.8	4.4	4.4	2.9	1.8
BPXX00050515	5.0±0.2	5.0±0.2	1.5Max	1.75	1.5	5.4	5.4	3.8	1.5
BPXX00050520	5.0±0.2	5.0±0.2	2.0Max	1.75	1.5	5.4	5.4	3.8	1.5
BPXX00050530	5.0±0.2	5.0±0.2	3.0Max	1.75	1.5	5.4	5.4	3.8	1.5
BPXX00060620	6.0±0.2	6.0±0.2	2.0Max	2.0	2.0	6.6	6.6	4.6	2.0
BPXX00060625	6.0±0.2	6.0±0.2	2.5Max	2.0	2.0	6.6	6.6	4.6	2.0
BPXX00060630	6.0±0.2	6.0±0.2	3.0Max	2.0	2.0	6.6	6.6	4.6	2.0
BPXX00060635	6.0±0.2	6.0±0.2	3.5Max	2.0	2.0	6.6	6.6	4.6	2.0

## SMD Shielded Power Inductors – BPXX Series

### Standard Specifications

Part Number	Inductance (uH)	Tolerance (±%)	Test Frequency (kHz)	RDC (Ω)Max	Isat (A)Max	Irms (A)Typ	Marking
BPXX00030310R47□00	0.47	20,30	100	0.07	2.3	2.3	R47
BPXX00030310R56□00	0.56	20,30	100	0.08	2.0	2.0	R56
BPXX000303101R0□00	1.0	20,30	100	0.085	1.6	1.75	1R0
BPXX000303101R2□00	1.2	20,30	100	0.10	1.5	1.7	1R2
BPXX000303101R5□00	1.5	20,30	100	0.12	1.3	1.6	1R5
BPXX000303101R8□00	1.8	20,30	100	0.15	1.2	1.4	1R8
BPXX000303102R2□00	2.2	20,30	100	0.22	1.1	1.15	2R2
BPXX000303103R3□00	3.3	20,30	100	0.22	0.82	1.05	3R3
BPXX000303103R9□00	3.9	20,30	100	0.25	0.78	0.95	3R9
BPXX000303104R7□00	4.7	20,30	100	0.33	0.72	0.80	4R7
BPXX000303105R6□00	5.6	20,30	100	0.40	0.66	0.78	5R6
BPXX000303106R8□00	6.8	20,30	100	0.45	0.62	0.74	6R8
BPXX000303108R2□00	8.2	20,30	100	0.56	0.55	0.71	8R2
BPXX00030310100□00	10	20,30	100	0.63	0.51	0.64	100
BPXX00030310120□00	12	20,30	100	0.74	0.45	0.55	120
BPXX00030310150□00	15	20,30	100	0.95	0.40	0.50	150
BPXX00030310180□00	18	20,30	100	1.0	0.37	0.47	180
BPXX00030310220□00	22	20,30	100	1.2	0.33	0.41	220
BPXX00030310330□00	33	20,30	100	2.0	0.27	0.35	330
BPXX00030310470□00	47	20,30	100	3.2	0.24	0.31	470

**Note: When ordering, please specify tolerance code. Tolerance: M=±20% , T=±30%**

- Operating temperature range—40°C ~ 125°C (Including self - temperature rise)
- Isat for Inductance drop 30% from its value without current
- Irms for a 40°C temperature rise from 25°C ambient with current
- Rated DC Current : The less value which is Isat or Irms

## SMD Shielded Power Inductors – BPXX Series

### Standard Specifications

Part Number	Inductance (uH)	Tolerance (±%)	Test Frequency (kHz)	RDC (Ω)Max	Isat (A)Max	Irms (A)Typ	Marking
BPXX00030312R47□00	0.47	30	100	0.05	2.5	2.5	R47
BPXX000303121R0□00	1.0	30	100	0.08	1.8	1.8	1R0
BPXX000303121R2□00	1.2	30	100	0.095	1.65	1.7	1R2
BPXX000303121R5□00	1.5	30	100	0.11	1.5	1.65	1R5
BPXX000303122R0□00	2.0	30	100	0.15	1.3	1.3	2R0
BPXX000303122R2□00	2.2	30	100	0.15	1.3	1.3	2R2
BPXX000303123R3□00	3.3	30	100	0.18	1.0	1.2	3R3
BPXX000303124R7□00	4.7	20,30	100	0.28	0.85	1.05	4R7
BPXX000303125R6□00	5.6	20,30	100	0.36	0.80	0.85	5R6
BPXX000303126R8□00	6.8	20,30	100	0.42	0.75	0.70	6R8
BPXX000303128R2□00	8.2	20,30	100	0.55	0.65	0.65	8R2
BPXX00030312100□00	10	20,30	100	0.62	0.57	0.6	100
BPXX00030312150□00	15	20,30	100	0.8	0.5	0.5	150
BPXX00030312220□00	22	20,30	100	1.2	0.4	0.42	220

**Note: When ordering, please specify tolerance code. Tolerance: M=±20% , T=±30%**

- Operating temperature range – 40°C ~ 125°C (Including self - temperature rise)
- Isat for Inductance drop 30% from its value without current
- I rms for a 40°C temperature rise from 25°C ambient with current
- Rated DC Current : The less value which is Isat or I rms

## SMD Shielded Power Inductors – BPXX Series

### Standard Specifications

Part Number	Inductance (uH)	Tolerance (±%)	Test Frequency (kHz)	RDC (Ω)Max	Isat (A)Max	Irms (A)Typ	Marking
BPXX000303151R0□00	1.0	20,30	100	0.075	2.0	2.0	1R0
BPXX000303151R5□00	1.5	20,30	100	0.10	1.8	1.7	1R5
BPXX000303151R8□00	1.8	20,30	100	0.10	1.5	1.4	1R8
BPXX000303152R1□00	2.1	20,30	100	0.11	1.5	1.4	2R1
BPXX000303152R2□00	2.2	20,30	100	0.11	1.5	1.4	2R2
BPXX000303153R3□00	3.3	20,30	100	0.13	1.3	1.4	3R3
BPXX000303154R7□00	4.7	20,30	100	0.20	1.1	1.2	4R7
BPXX000303156R8□00	6.8	20,30	100	0.30	0.91	0.90	6R8
BPXX00030315100□00	10	20,30	100	0.44	0.65	0.75	100
BPXX00030315150□00	15	20,30	100	0.70	0.55	0.59	150
BPXX00030315180□00	18	20,30	100	0.75	0.53	0.58	180
BPXX00030315220□00	22	20,30	100	0.825	0.49	0.57	220
BPXX00030315330□00	33	20,30	100	1.30	0.42	0.48	330
BPXX00030315470□00	47	20,30	100	1.55	0.32	0.40	470
BPXX00030315680□00	68	20,30	100	2.25	0.28	0.33	680
BPXX00030315101□00	100	20,30	100	3.4	0.23	0.26	101
BPXX00030315471□00	470	20,30	100	15	0.11	0.11	471

**Note: When ordering, please specify tolerance code. Tolerance: M=±20% , T=±30%**

- Operating temperature range – 40°C ~ 125°C (Including self - temperature rise)
- Isat for Inductance drop 30% from its value without current
- I rms for a 40°C temperature rise from 25°C ambient with current
- Rated DC Current : The less value which is Isat or I rms

## SMD Shielded Power Inductors – BPXX Series

### Standard Specifications

Part Number	Inductance (uH)	Tolerance (±%)	Test Frequency (kHz)	RDC (Ω)Max	Isat (A)Max	Irms (A)Typ	Marking
BPXX000303201R0□00	1.0	20,30	100	0.04	2.8	2.5	1R0
BPXX000303202R2□00	2.2	20,30	100	0.08	2.0	1.8	2R2
BPXX000303203R3□00	3.3	20,30	100	0.10	1.8	1.6	3R3
BPXX000303204R7□00	4.7	20,30	100	0.14	1.6	1.4	4R7
BPXX000303206R8□00	6.8	20,30	100	0.17	1.4	1.2	6R8
BPXX00030320100□00	10	20,30	100	0.4	1.0	0.80	100
BPXX00030320220□00	22	20,30	100	0.6	0.7	0.65	220
BPXX00030320330□00	33	20,30	100	1.0	0.6	0.52	330
BPXX00030320470□00	47	20,30	100	1.35	0.5	0.50	470

**Note: When ordering, please specify tolerance 00de. Tolerance: M=±20% , T=±30%**

- Operating temperature range – 40°C ~ 125°C (Including self - temperature rise)
- Isat for Inductance drop 30% from its value without current
- I rms for a 40°C temperature rise from 25°C ambient with current
- Rated DC Current : The less value which is Isat or I rms

## SMD Shielded Power Inductors – BPXX Series

### Standard Specifications

Part Number	Inductance (uH)	Tolerance (±%)	Test Frequency (kHz)	RDC (Ω)Max	Isat (A)Max	Irms (A)Typ	Marking
BPXX00040412R33□00	0.33	20,30	100	0.023	5.6	3.7	R33
BPXX00040412R47□00	0.47	30	100	0.045	4.0	2.5	R47
BPXX00040412R68□00	0.68	30	100	0.055	3.5	2.45	R68
BPXX000404121R0□00	1.0	30	100	0.060	2.8	2.4	1R0
BPXX000404121R2□00	1.2	20,30	100	0.065	2.65	2.3	1R2
BPXX000404121R5□00	1.5	30	100	0.07	2.5	2.2	1R5
BPXX000404122R2□00	2.2	20,30	100	0.10	2.1	1.75	2R2
BPXX000404123R3□00	3.3	20,30	100	0.13	1.5	1.45	3R3
BPXX000404124R7□00	4.7	20,30	100	0.175	1.4	1.3	4R7
BPXX000404125R6□00	5.6	20,30	100	0.26	1.3	1.1	5R6
BPXX000404126R8□00	6.8	20,30	100	0.34	1.2	0.98	6R8
BPXX00040412100□00	10	20,30	100	0.35	0.7	0.75	100
BPXX00040412150□00	15	20,30	100	0.55	0.6	0.73	150
BPXX00040412470□00	47	20,30	100	1.4	0.38	0.52	470

**Note: When ordering, please specify tolerance code. Tolerance: M=±20% , T=±30%**

- Operating temperature range – 40°C ~ 125°C (Including self - temperature rise)
- Isat for Inductance drop 30% from its value without current
- I rms for a 40°C temperature rise from 25°C ambient with current
- Rated DC Current : The less value which is Isat or I rms

## SMD Shielded Power Inductors – BPXX Series

### Standard Specifications

Part Number	Inductance (uH)	Tolerance (±%)	Test Frequency (kHz)	RDC (Ω)Max	Isat (A)Max	Irms (A)Typ	Marking
BPXX00040418R56□00	0.56	20,30	100	0.030	4.8	2.80	R56
BPXX00040418R68□00	0.68	30	100	0.035	4.5	2.75	R68
BPXX000404181R0□00	1.0	30	100	0.04	3.4	2.7	1R0
BPXX000404181R5□00	1.5	30	100	0.05	2.7	2.5	1R5
BPXX000404181R6□00	1.6	20,30	100	0.05	2.7	2.5	1R6
BPXX000404181R8□00	1.8	30	100	0.06	2.6	2.4	1R8
BPXX000404182R2□00	2.2	20,30	100	0.07	2.5	2.2	2R2
BPXX000404182R5□00	2.5	20,30	100	0.075	2.4	2.1	2R5
BPXX000404183R3□00	3.3	20,30	100	0.08	2.2	2.0	3R3
BPXX000404183R6□00	3.6	20,30	100	0.10	2.0	1.8	3R6
BPXX000404183R9□00	3.9	20,30	100	0.10	2.0	1.8	3R9
BPXX000404184R7□00	4.7	20,30	100	0.125	1.7	1.6	4R7
BPXX000404185R6□00	5.6	20,30	100	0.135	1.5	1.45	5R6
BPXX000404186R8□00	6.8	20,30	100	0.15	1.2	1.30	6R8
BPXX00040418100□00	10	20,30	100	0.20	1.1	1.15	100
BPXX00040418150□00	15	20,30	100	0.28	0.86	0.90	150
BPXX00040418180□00	18	20,30	100	0.30	0.78	0.88	180
BPXX00040418220□00	22	20,30	100	0.36	0.74	0.85	220
BPXX00040418330□00	33	20,30	100	0.46	0.58	0.77	330
BPXX00040418470□00	47	20,30	100	0.75	0.51	0.63	470
BPXX00040418680□00	68	20,30	100	1.07	0.41	0.48	680
BPXX00040418820□00	82	20,30	100	1.22	0.38	0.44	820
BPXX00040418101□00	100	20,30	100	1.64	0.34	0.42	101
BPXX00040418121□00	120	20,30	100	1.88	0.31	0.38	121
BPXX00040418151□00	150	20,30	100	2.45	0.27	0.31	151
BPXX00040418181□00	180	20,30	100	2.91	0.24	0.30	181
BPXX00040418221□00	220	20,30	100	4.2	0.22	0.24	221
BPXX00040418331□00	330	20,30	100	5.9	0.18	0.22	331
BPXX00040418471□00	470	20,30	100	7.1	0.14	0.20	471
BPXX00040418561□00	560	20,30	100	10	0.13	0.18	561
BPXX00040418681□00	680	20,30	100	11.5	0.12	0.16	681
BPXX00040418821□00	820	20,30	100	17.8	0.11	0.12	821
BPXX00040418102□00	1000	20,30	100	19.4	0.10	0.10	102
BPXX00040418152□00	1500	20,30	100	30	0.08	0.08	152

**Note: When ordering, please specify tolerance code. Tolerance: M=±20% , T=±30%**

- Operating temperature range –40°C ~ 125°C (Including self - temperature rise)
- Isat for Inductance drop 30% from its value without current
- Irms for a 40°C temperature rise from 25°C ambient with current
- Rated DC Current : The less value which is Isat or Irms

## SMD Shielded Power Inductors – BPXX Series

### Standard Specifications

Part Number	Inductance (uH)	Tolerance (±%)	Test Frequency (kHz)	RDC (Ω)Max	Isat (A)Max	Irms (A)Typ	Marking
BPXX000404201R8□00	1.8	30	100	0.051	1.97	2.37	1R8
BPXX000404202R2□00	2.2	30	100	0.059	1.72	2.19	2R2
BPXX000404203R3□00	3.3	30	100	0.078	1.52	1.94	3R3
BPXX000404204R7□00	4.7	20,30	100	0.098	1.24	1.71	4R7
BPXX000404206R8□00	6.8	20,30	100	0.131	1.05	1.47	6R8
BPXX00040420100□00	10	20,30	100	0.185	0.85	1.0	100
BPXX00040420150□00	15	20,30	100	0.241	0.70	0.9	150
BPXX00040420220□00	22	20,30	100	0.431	0.56	0.8	220
BPXX00040420330□00	33	20,30	100	0.628	0.47	0.69	330
BPXX00040420470□00	47	20,30	100	0.934	0.39	0.56	470
BPXX00040420680□00	68	20,30	100	1.2	0.32	0.5	680
BPXX00040420101□00	100	20,30	100	1.4	0.26	0.4	101
BPXX00040420561□00	560	20,30	100	6.6	0.12	0.2	561

**Note: When ordering, please specify tolerance code. Tolerance: M=±20% , T=±30%**

- Operating temperature range – 40°C ~ 125°C (Including self - temperature rise)
- Isat for Inductance drop 30% from its value without current
- I rms for a 40°C temperature rise from 25°C ambient with current
- Rated DC Current : The less value which is Isat or I rms

## SMD Shielded Power Inductors – BPXX Series

### Standard Specifications

Part Number	Inductance (uH)	Tolerance (±%)	Test Frequency (kHz)	RDC (Ω)Max	Isat (A)Max	Irms (A)Typ	Marking
BPXX000404301R0□00	1.0	30	100	0.020	2.80	3.3	1R0
BPXX000404301R2□00	1.2	30	100	0.025	2.65	3.1	1R2
BPXX000404301R5□00	1.5	30	100	0.028	2.6	3.0	1R5
BPXX000404302R2□00	2.2	30	100	0.035	2.3	2.7	2R2
BPXX000404303R3□00	3.3	20,30	100	0.045	2.1	2.5	3R3
BPXX000404304R7□00	4.7	20,30	100	0.055	2.0	2.3	4R7
BPXX000404306R8□00	6.8	20,30	100	0.078	1.5	2.0	6R8
BPXX0004043010□00	10	20,30	100	0.130	1.0	1.5	100
BPXX0004043012□00	12	20,30	100	0.175	0.9	1.4	120
BPXX0004043015□00	15	20,30	100	0.21	0.85	1.3	150
BPXX0004043022□00	22	20,30	100	0.29	0.8	1.1	220
BPXX0004043033□00	33	20,30	100	0.455	0.7	0.85	330
BPXX0004043047□00	47	20,30	100	0.685	0.6	0.70	470
BPXX0004043068□00	68	20,30	100	0.955	0.5	0.55	680
BPXX0004043082□00	82	20,30	100	1.1	0.45	0.45	820
BPXX00040430101□00	100	20,30	100	1.5	0.4	0.40	101
BPXX00040430151□00	150	20,30	100	2.4	0.3	0.35	151
BPXX00040430181□00	180	20,30	100	3.6	0.25	0.30	181
BPXX00040430471□00	470	20,30	100	5.5	0.14	0.15	471
BPXX00040430102□00	1000	20,30	100	9	0.12	0.12	102
BPXX00040430122□00	1200	20,30	100	14	0.11	0.11	122
BPXX00040430222□00	2200	20,30	100	18	0.09	0.09	222

**Note: When ordering, please specify tolerance code. Tolerance: M=±20% , T=±30%**

- Operating temperature range – 40°C ~ 125°C (Including self - temperature rise)
- Isat for Inductance drop 30% from its value without current
- Irms for a 40°C temperature rise from 25°C ambient with current
- Rated DC Current : The less value which is Isat or Irms

## SMD Shielded Power Inductors – BPXX Series

### Standard Specifications

Part Number	Inductance (uH)	Tolerance (±%)	Test Frequency (kHz)	RDC (Ω)Max	Isat (A)Max	Irms (A)Typ	Marking
BPXX000505151R0□00	1.0	20,30	100	0.05	3.5	2.65	1R0
BPXX000505151R2□00	1.2	20,30	100	0.05	3.5	2.65	1R2
BPXX000505151R3□00	1.3	20,30	100	0.065	2.6	2.35	1R3
BPXX000505151R5□00	1.5	20,30	100	0.065	2.6	2.35	1R5
BPXX000505151R8□00	1.8	30	100	0.075	2.6	2.15	1R8
BPXX000505152R2□00	2.2	20,30	100	0.09	2.6	2.0	2R2
BPXX000505153R3□00	3.3	20,30	100	0.125	2.0	1.8	3R3
BPXX000505154R7□00	4.7	20,30	100	0.150	1.7	1.62	4R7
BPXX000505155R6□00	5.6	20,30	100	0.175	1.6	1.45	5R6
BPXX000505156R8□00	6.8	20,30	100	0.225	1.4	1.25	6R8
BPXX000505158R2□00	8.2	20,30	100	0.28	1.3	1.05	8R2
BPXX00050515100□00	10	20,30	100	0.30	1.1	0.95	100
BPXX00050515120□00	12	20,30	100	0.35	1.0	0.84	120
BPXX00050515150□00	15	20,30	100	0.36	0.7	0.84	150
BPXX00050515180□00	18	20,30	100	0.55	0.65	0.83	180
BPXX00050515220□00	22	20,30	100	0.675	0.65	0.82	220
BPXX00050515330□00	33	20,30	100	0.75	0.50	0.70	330
BPXX00050515470□00	47	20,30	100	1.0	0.45	0.57	470
BPXX00050515560□00	56	20,30	100	1.13	0.40	0.52	560
BPXX00050515680□00	68	20,30	100	1.45	0.38	0.47	680
BPXX00050515101□00	100	20,30	100	1.95	0.28	0.42	101
BPXX00050515121□00	120	20,30	100	2.5	0.28	0.37	121
BPXX00050515151□00	150	20,30	100	3.4	0.24	0.33	151
BPXX00050515221□00	220	20,30	100	4.5	0.20	0.29	221
BPXX00050515331□00	330	20,30	100	7.4	0.165	0.22	331
BPXX00050515471□00	470	20,30	100	7.5	0.12	0.21	471
BPXX00050515561□00	560	20,30	100	8.5	0.11	0.19	561
BPXX00050515681□00	680	20,30	100	10.6	0.10	0.175	681
BPXX00050515102□00	1000	20,30	100	20	0.08	0.15	102

**Note: When ordering, please specify tolerance code. Tolerance: M=±20% , T=±30%**

- Operating temperature range – 40°C ~ 125°C (Including self - temperature rise)
- Isat for Inductance drop 30% from its value without current
- Irms for a 40°C temperature rise from 25°C ambient with current
- Rated DC Current : The less value which is Isat or Irms

## SMD Shielded Power Inductors – BPXX Series

### Standard Specifications

Part Number	Inductance (uH)	Tolerance (±%)	Test Frequency (kHz)	RDC (Ω)Max	Isat (A)Max	Irms (A)Typ	Marking
BPXX00050520R30□00	0.30	30	100	0.00875	6.0	7	R30
BPXX00050520R33□00	0.33	30	100	0.01065	5.8	6	R33
BPXX00050520R68□00	0.68	30	100	0.01470	4.0	5.2	R68
BPXX000505201R0□00	1.0	30	100	0.02455	3.5	4.0	1R0
BPXX000505201R3□00	1.3	30	100	0.035	3.2	3.3	1R3
BPXX000505201R5□00	1.5	30	100	0.035	3.2	3.3	1R5
BPXX000505201R8□00	1.8	20,30	100	0.045	3.0	3.0	1R8
BPXX000505202R2□00	2.2	20,30	100	0.055	2.7	2.75	2R2
BPXX000505202R5□00	1.3	20,30	100	0.060	2.6	2.6	2R5
BPXX000505202R7□00	1.3	20,30	100	0.062	2.5	2.6	2R7
BPXX000505203R3□00	3.3	20,30	100	0.065	2.4	2.5	3R3
BPXX000505204R7□00	4.7	20,30	100	0.08	2.1	2.0	4R7
BPXX000505205R6□00	5.6	20,30	100	0.09	1.95	1.9	5R6
BPXX000505206R8□00	6.8	20,30	100	0.105	1.8	1.7	6R8
BPXX000505208R2□00	8.2	20,30	100	0.12	1.6	1.6	8R2
BPXX00050520100□00	10	20,30	100	0.15	1.4	1.5	100
BPXX00050520150□00	15	20,30	100	0.27	1.1	1.2	150
BPXX00050520220□00	22	20,30	100	0.35	0.78	0.9	220
BPXX00050520330□00	33	20,30	100	0.48	0.65	0.8	330
BPXX00050520470□00	47	20,30	100	0.75	0.60	0.7	470
BPXX00050520101□00	100	20,30	100	1.21	0.34	0.55	101
BPXX00050520121□00	120	20,30	100	1.60	0.30	0.48	121
BPXX00050520151□00	150	20,30	100	2.25	0.28	0.40	151
BPXX00050520221□00	220	20,30	100	3.3	0.26	0.37	221
BPXX00050520331□00	330	20,30	100	4.2	0.22	0.30	331

**Note: When ordering, please specify tolerance code. Tolerance: M=±20% , T=±30%**

- Operating temperature range – 40°C ~ 125°C (Including self - temperature rise)
- Isat for Inductance drop 30% from its value without current
- Irms for a 40°C temperature rise from 25°C ambient with current
- Rated DC Current : The less value which is Isat or Irms

## SMD Shielded Power Inductors – BPXX Series

### Standard Specifications

Part Number	Inductance (uH)	Tolerance (±%)	Test Frequency (kHz)	RDC (Ω)Max	Isat (A)Max	Irms (A)Typ	Marking
BPXX000505301R2□00	1.2	20,30	100	0.040	3.5	2.65	1R2
BPXX000505302R2□00	2.2	30	100	0.057	3.1	2.15	2R2
BPXX000505303R3□00	3.3	20,30	100	0.066	2.5	1.80	3R3
BPXX000505304R7□00	4.7	20,30	100	0.083	2.0	1.75	4R7
BPXX000505306R8□00	6.8	20,30	100	0.099	1.7	1.6	6R8
BPXX000505308R2□00	8.2	20,30	100	0.12	1.6	1.5	8R2
BPXX00050530100□00	10	20,30	100	0.15	1.5	1.4	100
BPXX00050530120□00	12	20,30	100	0.16	1.4	1.3	120
BPXX00050530150□00	15	20,30	100	0.175	1.3	1.2	150
BPXX00050530220□00	22	20,30	100	0.19	1.0	1.1	220
BPXX00050530270□00	27	20,30	100	0.27	0.9	1.0	270
BPXX00050530330□00	33	20,30	100	0.35	0.8	0.9	330
BPXX00050530470□00	47	20,30	100	0.50	0.75	0.75	470
BPXX00050530560□00	56	20,30	100	0.65	0.65	0.65	560
BPXX00050530680□00	68	20,30	100	0.75	0.60	0.60	680
BPXX00050530101□00	100	20,30	100	0.90	0.45	0.55	101
BPXX00050530221□00	220	20,30	100	1.35	0.25	0.45	221
BPXX00050530331□00	330	20,30	100	1.8	0.17	0.42	331
BPXX00050530821□00	820	20,30	100	5.0	0.12	0.26	821
BPXX00050530102□00	1000	20,30	100	5.1	0.11	0.25	102
BPXX00050530152□00	1500	20	100	7.6	0.09	0.18	152
BPXX00050530222□00	2200	20	100	11	0.08	0.15	222

**Note: When ordering, please specify tolerance code. Tolerance: M=±20% , T=±30%**

- Operating temperature range – 40°C ~ 125°C (Including self - temperature rise)
- Isat for Inductance drop 30% from its value without current
- I rms for a 40°C temperature rise from 25°C ambient with current
- Rated DC Current : The less value which is Isat or I rms

## SMD Shielded Power Inductors – BPXX Series

### Standard Specifications

Part Number	Inductance (uH)	Tolerance (±%)	Test Frequency (kHz)	RDC (Ω)Max	Isat (A)Max	Irms (A)Typ	Marking
BPXX000606201R2□00	1.2	30	100	0.03	3.5	3.0	1R2
BPXX000606201R3□00	1.3	30	100	0.0305	3.2	3.0	1R3
BPXX000606201R5□00	1.5	30	100	0.0305	3.2	3.0	1R5
BPXX000606201R8□00	1.8	30	100	0.0375	3.0	2.6	1R8
BPXX000606202R2□00	2.2	30	100	0.04	2.7	2.4	2R2
BPXX000606202R5□00	2.5	20,30	100	0.04	2.7	2.4	1R5
BPXX000606203R3□00	3.3	20,30	100	0.06	2.5	2.3	3R3
BPXX000606204R7□00	4.7	20,30	100	0.07	2.1	2.0	4R7
BPXX000606206R2□00	6.2	20,30	100	0.085	1.9	1.8	6R2
BPXX000606206R8□00	6.8	20,30	100	0.085	1.9	1.8	6R8
BPXX000606208R2□00	8.2	20,30	100	0.125	1.7	1.5	8R2
BPXX00060620100□00	10	20,30	100	0.15	1.4	1.2	100
BPXX00060620150□00	15	20,30	100	0.22	1.1	1.1	150
BPXX00060620220□00	22	20,30	100	0.32	1.0	0.9	220
BPXX00060620330□00	33	20,30	100	0.45	0.9	0.8	330
BPXX00060620470□00	47	20,30	100	0.6	0.85	0.7	470
BPXX00060620101□00	100	20,30	100	1.2	0.5	0.45	101

**Note: When ordering, please specify tolerance code. Tolerance: M=±20% , T=±30%**

- Operating temperature range – 40°C ~ 125°C (Including self - temperature rise)
- Isat for Inductance drop 30% from its value without current
- Irms for a 40°C temperature rise from 25°C ambient with current
- Rated DC Current : The less value which is Isat or Irms

## SMD Shielded Power Inductors – BPXX Series

### Standard Specifications

Part Number	Inductance (uH)	Tolerance (±%)	Test Frequency (kHz)	RDC (Ω)Max	Isat (A)Max	Irms (A)Typ	Marking
BPXX000606251R0□00	1.0	30	100	0.035	5.5	1.80	1R0
BPXX000606251R2□00	1.2	30	100	0.040	5.3	1.65	1R2
BPXX000606251R5□00	1.5	30	100	0.040	5.3	1.65	1R5
BPXX000606252R2□00	2.2	30	100	0.045	3.9	1.40	2R2
BPXX000606253R3□00	3.3	20,30	100	0.055	3.5	1.35	3R3
BPXX000606254R7□00	4.7	20,30	100	0.065	3.1	1.3	4R7
BPXX000606255R0□00	5.0	30	100	0.065	3.1	1.3	5R0
BPXX000606256R8□00	6.8	20,30	100	0.095	2.7	1.3	6R8
BPXX000606258R2□00	8.2	20,30	100	0.100	2.2	1.3	8R2
BPXX00060625100□00	10	20,30	100	0.105	2.0	1.3	100
BPXX00060625150□00	15	20,30	100	0.135	2.0	1.2	150
BPXX00060625220□00	22	20,30	100	0.175	1.4	1.1	220
BPXX00060625330□00	33	20,30	100	0.26	1.1	0.9	330
BPXX00060625470□00	47	20,30	100	0.42	0.98	0.8	470
BPXX00060625680□00	68	20,30	100	0.42	0.59	0.74	470
BPXX00060625101□00	100	20,30	100	0.61	0.48	0.64	101
BPXX00060625121□00	120	20,30	100	0.75	0.43	0.58	121
BPXX00060625151□00	150	20,30	100	0.92	0.40	0.54	151
BPXX00060625221□00	220	20,30	100	1.3	0.32	0.50	221
BPXX00060625331□00	330	20,30	100	2.0	0.26	0.39	331
BPXX00060625471□00	470	20,30	100	2.6	0.22	0.37	471
BPXX00060625681□00	680	20,30	100	4	0.18	0.26	681
BPXX00060625102□00	1000	20,30	100	6	0.15	0.24	102

**Note: When ordering, please specify tolerance code. Tolerance: M=±20% , T=±30%**

- Operating temperature range – 40°C ~ 125°C (Including self - temperature rise)
- Isat for Inductance drop 30% from its value without current
- I rms for a 40°C temperature rise from 25°C ambient with current
- Rated DC Current : The less value which is Isat or I rms

## SMD Shielded Power Inductors – BPXX Series

### Standard Specifications

Part Number	Inductance (uH)	Tolerance (±%)	Test Frequency (kHz)	RDC (Ω)Max	Isat (A)Max	Irms (A)Typ	Marking
BPXX000606301R0□00	1.0	30	100	0.01385	4.2	4.5	1R0
BPXX000606301R5□00	1.5	30	100	0.0190	4.0	4.0	1R5
BPXX000606302R2□00	2.2	30	100	0.02375	3.8	3.8	2R2
BPXX000606302R7□00	2.7	20,30	100	0.032	3.7	3.7	2R7
BPXX000606303R3□00	3.3	20,30	100	0.036	3.6	2.75	3R3
BPXX000606304R7□00	4.7	20,30	100	0.045	3.3	2.5	4R7
BPXX000606305R0□00	5.0	30	100	0.045	3.3	2.5	5R0
BPXX000606306R2□00	6.2	20,30	100	0.056	2.5	2.4	6R2
BPXX000606306R8□00	6.8	20,30	100	0.056	2.5	2.4	6R8
BPXX000606308R2□00	8.2	20,30	100	0.070	2.3	2.3	8R2
BPXX0006063010□00	10	20,30	100	0.085	2.2	2.2	100
BPXX00060630120□00	12	20,30	100	0.10	1.9	1.9	120
BPXX00060630150□00	15	20,30	100	0.12	1.7	1.6	150
BPXX00060630180□00	18	20,30	100	0.14	1.6	1.5	180
BPXX00060630220□00	22	20,30	100	0.16	1.5	1.4	220
BPXX00060630330□00	33	20,30	100	0.22	1.3	1.1	330
BPXX00060630470□00	47	20,30	100	0..3	1.1	1.0	470

**Note: When ordering, please specify tolerance code. Tolerance: M=±20% , T=±30%**

- Operating temperature range – 40°C ~ 125°C (Including self - temperature rise)
- Isat for Inductance drop 30% from its value without current
- Irms for a 40°C temperature rise from 25°C ambient with current
- Rated DC Current : The less value which is Isat or Irms

## SMD Shielded Power Inductors – BPXX Series

### Standard Specifications

Part Number	Inductance (uH)	Tolerance (±%)	Test Frequency (kHz)	RDC (Ω)Max	Isat 1 (A)Typ	Isat 2 (A)Typ	Isat 3 (A)Typ	Irms (A)Typ	Marking
BPXX00060635100□00	10	20,30	100	0.10	2.3	2.4	2.5	1.8	100
BPXX00060635220□00	22	20,30	100	0.145	1.6	1.7	1.7	2.0	220
BPXX00060635330□00	33	20,30	100	0.18	1.3	1.4	1.5	1.3	330
BPXX00060635470□00	47	20,30	100	0.245	1.1	1.2	1.2	1.2	470
BPXX00060635560□00	56	20,30	100	0.280	1.0	1.0	1.1	1.07	560
BPXX00060635680□00	68	20,30	100	0.345	0.9	0.94	0.96	1.1	680
BPXX00060635101□00	100	20,30	100	0.375	0.46	0.52	0.54	0.9	101
BPXX00060635221□00	220	20,30	100	0.72	0.31	0.36	0.37	0.64	221
BPXX00060635471□00	470	20,30	100	1.6	0.22	0.25	0.26	0.43	471
BPXX00060635681□00	680	20,30	100	2.2	0.17	0.19	0.21	0.37	681
BPXX00060635102□00	1000	20,30	100	3.2	0.14	0.17	0.18	0.30	102
BPXX00060635152□00	1500	20,30	100	4.6	0.12	0.13	0.14	0.26	152
BPXX00060635103□00	10000	20,30	1	30.5	0.05	0.055	0.06	0.095	103

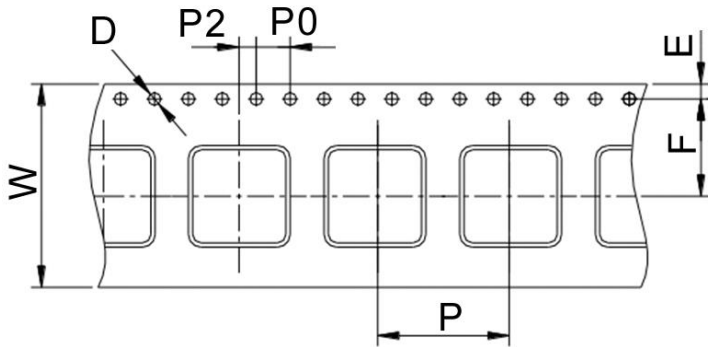
**Note: When ordering, please specify tolerance code. Tolerance: M=±20% , T=±30%**

- Operating temperature range – 40°C ~ 125°C (Including self - temperature rise)
- Isat 1 for Inductance drop 10% from its value without current
- Isat 2 for Inductance drop 20% from its value without current
- Isat 3 for Inductance drop 30% from its value without current
- Irms for a 40°C temperature rise from 25°C ambient with current
- Rated DC Current : The less value which is Isat1~3 or Irms

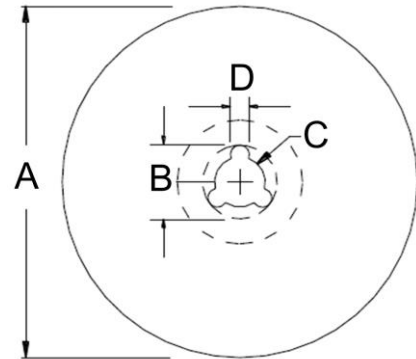
# SMD Shielded Power Inductors – BPXX Series

## Packaging Specifications

Tape Dimensions



Reel Dimensions





Dimensions in mm







TYPE	Tape Dimensions							Reel Dimensions				Quantity PCS / Reel
	W	D	E	F	P	P0	P2	A	B	C	D	
BPXX00030310	12	1.5	1.75	5.5	8	4	2	178	20	13	2	1500
BPXX00030312	12	1.5	1.75	5.5	8	4	2	178	20	13	2	1500
BPXX00030315	12	1.5	1.75	5.5	8	4	2	178	20	13	2	1000
BPXX00030320	12	1.5	1.75	5.5	8	4	2	178	20	13	2	1000
BPXX00040412	12	1.5	1.75	5.5	8	4	2	178	20	13	2	1000
BPXX00040418	12	1.5	1.75	5.5	8	4	2	178	20	13	2	1000
BPXX00040420	12	1.5	1.75	5.5	8	4	2	178	20	13	2	1000
BPXX00040430	12	1.5	1.75	5.5	8	4	2	178	20	13	2	600
BPXX00050515	12	1.5	1.75	5.5	8	4	2	178	20	13	2	1000
BPXX00050520	12	1.5	1.75	5.5	8	4	2	178	20	13	2	900
BPXX00050530	12	1.5	1.75	5.5	8	4	2	330	20	13	2	2000
BPXX00060620	16	1.5	1.75	7.5	12	4	2	330	20	13	2	2000
BPXX00060625	16	1.5	1.75	7.5	12	4	2	330	20	13	2	1500
BPXX00060630	16	1.5	1.75	7.5	12	4	2	330	20	13	2	1500
BPXX00060635	16	1.5	1.75	7.5	12	4	2	330	20	13	2	1500

## Looking for pricing, stock, or lifecycle information?

Click below to explore more details on WIN SOURCE:

-  [View BPXX00060635221M00 on WIN SOURCE](#)
-  [Chilisin Information](#)

## Optimize Your Supply Chain with WIN SOURCE Solutions

-  Global Sourcing Solution
-  Obsolete Management
-  Cost Control Management
-  Shortage Management
-  Alternative Solution
-  Excess Inventory Management