



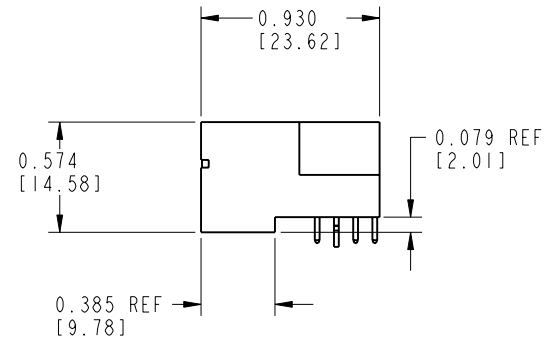
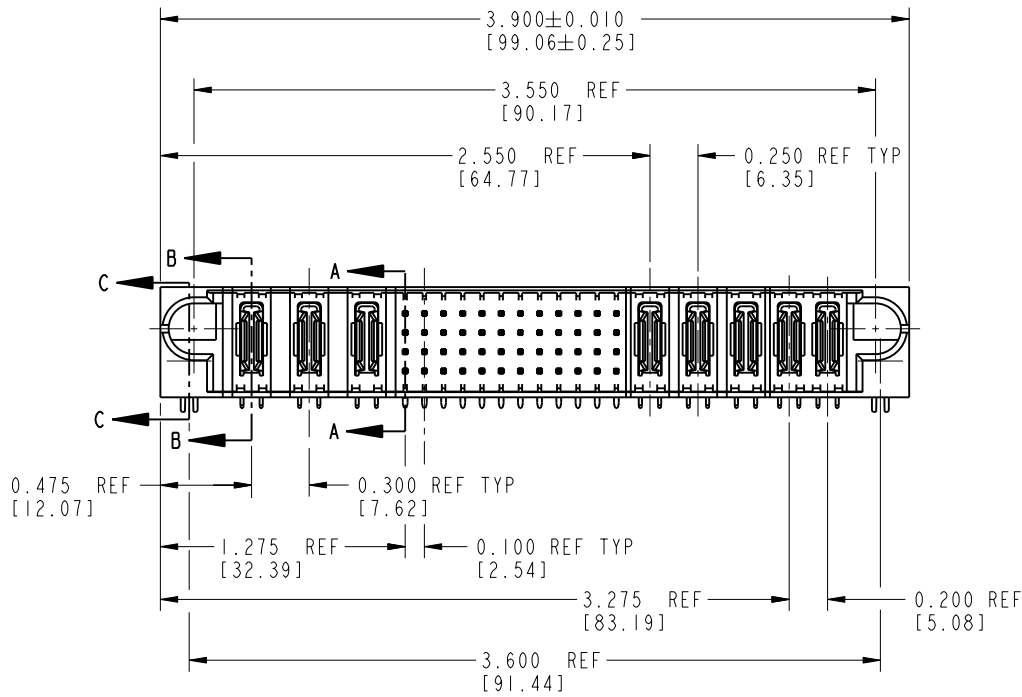
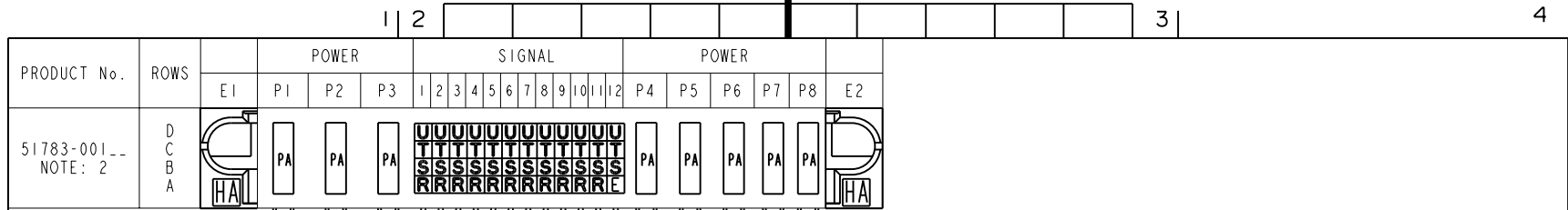
**THE DATASHEET OF**  
**51783-001LF**



Tous droits strictement réservés. Reproduction ou communication o des liens interdite sous quelque forme que ce soit sans autorisation écrite du propriétaire. Propriété de c FCI. Droits de reproduction FCI.

All rights strictly reserved. Reproduction or issue to third parties in any form, whenever is not permitted without written authority from the proprietor. Property of FCI. Copyright FCI.

**FCI**



| CODE | DIM "M"<br>±.010 [0.25] |        | CONTACT TYPE |
|------|-------------------------|--------|--------------|
| E    | 0.220                   | [5.59] | SIGNAL       |
| R    | 0.270                   | [6.86] | SIGNAL       |
| S    | 0.270                   | [6.86] | SIGNAL       |
| T    | 0.270                   | [6.86] | SIGNAL       |
| U    | 0.270                   | [6.86] | SIGNAL       |
| PA   | N/A                     | [N/A]  | POWER        |
| HA   | N/A                     | [N/A]  | HOLD-DOWN    |

|             |           |     |          |                |                       |                                       |            |               |                 |                        |       |        |
|-------------|-----------|-----|----------|----------------|-----------------------|---------------------------------------|------------|---------------|-----------------|------------------------|-------|--------|
| mat'l code  |           |     |          | SEE NOTE 1     |                       | tolerances unless otherwise specified |            | CUSTOMER COPY |                 | <br>www.fciconnect.com |       |        |
| ltr         | ecn no.   | dr  | date     | linear         | .XX±.01/.X±.3         |                                       | projection |               | title           |                        | code  |        |
| A           | V02393    | JRW | 10-27-00 |                | .XXX±.005/.X±.13      |                                       |            |               | 3ACP + 48S + 5P |                        |       |        |
| B           | V12230    | JRW | 09-17-01 | angles         | .XXXX±.0020/.XXX±.051 |                                       |            |               | product family  |                        | size  |        |
| C           | DG05-0572 | JMG | 01/04/06 |                | 0°±2°                 |                                       | INCH / MM  |               | PwrBlade        |                        |       | 213    |
| sheet index |           |     |          | revision sheet | C                     | C                                     | C          | scale         |                 | 51783                  |       | 1 OF 3 |
|             |           |     |          | 1              | 2                     | 3                                     | 1:1        |               | A               |                        | SHEET |        |

form no. 7530-001-103

cage code 22526

PDM: Rev:C

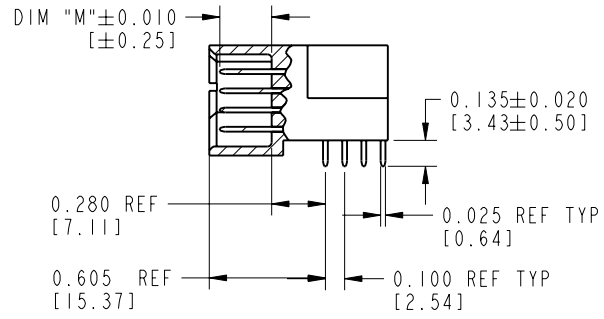
STATUS: Released

Printed: Oct 07, 2006

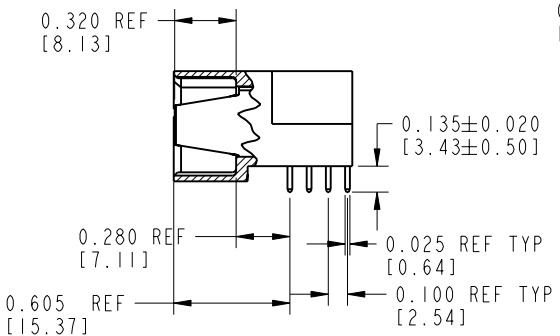
Tous droits strictement réservés. Reproduction ou communication o des liers interalle sous quelque forme que ce soit sans autorisation écrite du propriétaire. Propriete de c FCI. Droits de reproduction FCI.

All rights strictly reserved. Reproduction or issue to third parties in any form, whenever is not permitted without written authority from the proprietor. Property of FCI. Copyright FCI.

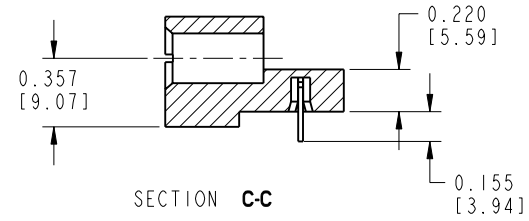
PRODUCT NUMBER  
51783-001--  
NOTE: 2



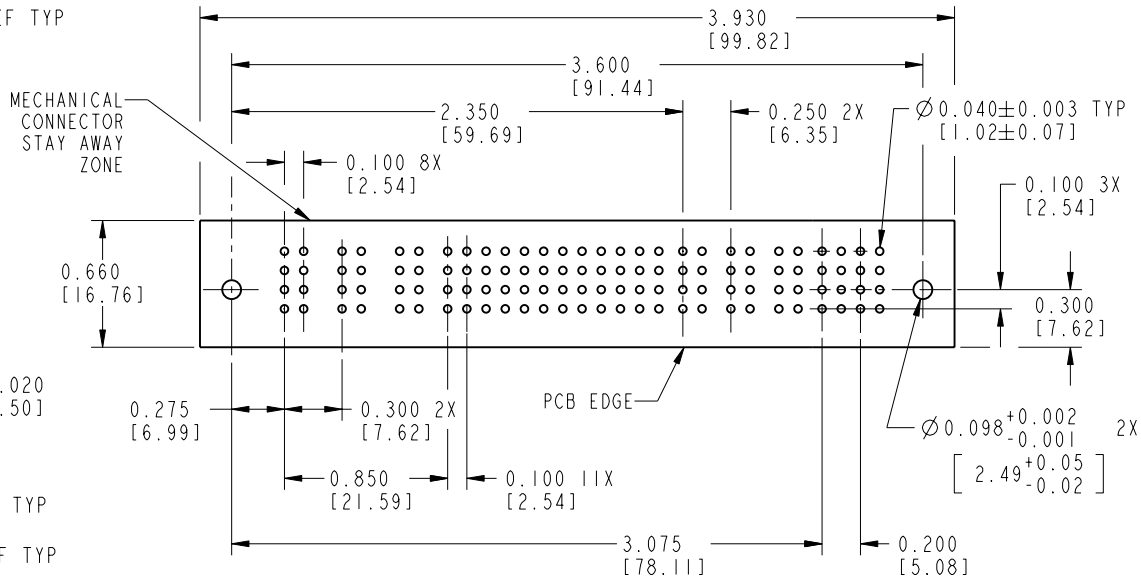
SECTION A-A



SECTION B-B



SECTION C-C



RECOMMENDED PCB LAYOUT

|             |         |                |      |            |                       |                                       |                |               |                           |                    |       |
|-------------|---------|----------------|------|------------|-----------------------|---------------------------------------|----------------|---------------|---------------------------|--------------------|-------|
| mat'l code  |         |                |      | SEE NOTE 1 |                       | tolerances unless otherwise specified |                | CUSTOMER COPY |                           | www.fciconnect.com |       |
| lfr         | ecn no. | dr             | date | linear     | .XX±.01/.X±.3         | projection                            |                |               | title                     |                    | code  |
| c           |         |                |      | angles     | .XXX±.005/.X±.13      |                                       | INCH / MM      |               | 3ACP + 48S + 5P           |                    | 213   |
|             |         |                |      | dr         | .XXXX±.0020/.XXX±.051 |                                       | scale          |               | RIGHT ANGLE SOLDER HEADER |                    | SHEET |
|             |         |                |      | engr       | 0°±2°                 | 1:1                                   | product family |               | PwrBlade                  |                    | 2     |
|             |         |                |      | chr        | C. BAROT 05-07-00     |                                       | size           |               | 51783                     |                    |       |
|             |         |                |      | appd       | J. BROWN 05-07-00     |                                       | A              |               |                           |                    |       |
|             |         |                |      |            | J. BROWN 05-07-00     |                                       |                |               |                           |                    |       |
| sheet index |         | revision sheet |      |            |                       |                                       |                |               |                           | cage code          |       |
|             |         |                |      |            |                       |                                       |                |               |                           | 22526              |       |

Tous droits strictement réservés. Reproduction ou communication o des liers interdite sous quelque forme que ce soit sans autorisation écrite du propriétaire. Propriete de c FCI. Droits de reproduction FCI.



All rights strictly reserved. Reproduction or issue to third parties in any form, whomever is not permitted without written authority from the proprietor. Property of FCI. Copyright FCI.

**PRODUCT NUMBER**  
51783-001\_\_  
NOTE: 2

**CONNECTOR NOTES:**

- HOUSING MATERIAL: UL 94 V-0 GLASS FILLED HIGH TEMP THERMOPLASTIC  
POWER CONTACT MATERIAL: COPPER ALLOY  
SIGNAL CONTACT MATERIAL: COPPER ALLOY
- PLATING:
  - 51783-001 Signal Pin: 30u"/0.76um Au OVER 50u"/1.27um Ni ON THE CONTACT AREA.  
AND 100u"/2.54um SnPb PLATING OVER 50u"/1.27um Ni ON THE TERMINATION SECTION.
  - Power Pin: 30u"/0.76um Au OVER 50u"/1.27um Ni ON THE CONTACT AREA,  
AND 100u"/2.54um SnPb PLATING OVER 50u"/1.27um Ni ON THE TERMINATION SECTION.
  - 51783-001LF Signal Pin: 30u"/0.76um Au OVER 50u"/1.27um Ni ON THE CONTACT AREA.  
AND 78u"/2.00um Sn PLATING OVER 50u"/1.27um Ni ON THE TERMINATION SECTION.
  - Power Pin: 30u"/0.76um Au OVER 50u"/1.27um Ni ON THE CONTACT AREA,  
AND 78u"/2.00um Sn PLATING OVER 50u"/1.27um Ni ON THE TERMINATION SECTION.

PART NUMBER 51783-001LF MEETS EUROPEAN UNION DIRECTIVE AND OTHER COUNTRY REGULATIONS AS DESCRIBED IN GS-22-008.  
THE HOUSING WILL WITHSTAND EXPOSURE TO 260° PEAK TEMPERATURE FOR 10 SECONDS IN A WAVE SOLDER APPLICATION WITH A CIRCUIT BOARD.

- "MANUFACTURER'S" NAME, P/N, AND DATE CODE TO APPEAR ON THIS SURFACE
- PRODUCT SPECIFICATION GS-12-149

**PCB NOTES:**

- ALL DIMENSIONS ARE BASIC UNLESS OTHERWISE SPECIFIED.
- ALL THROUGH HOLES ARE LOCATED WITH A TRUE POSITION OF 0.004 [0.10]
- ALL HOLE DIAMETERS ARE FINISHED HOLE SIZE
- Ø0.126[3.20] THROUGH HOLES ARE UNPLATED.
- Ø0.0453±0.0010 [1.151±0.025] DRILLED HOLES PLATED WITH 0.0003 [0.008] MIN SnPb OVER 0.001 [0.03] TO 0.003 [0.08] Cu PLATING TO ACHIEVE A Ø0.040±0.003 [1.02±0.07] HOLE.

THIS FILE WAS ORIGINALLY CREATED IN THE PRO ENGINEER ENVIRONMENT AND ANY FUTURE REVISIONS TO THIS FILE MUST BE MADE IN THE PRO ENGINEER ENVIRONMENT

|             |                |           |      |                                       |                       |            |  |                           |  |
|-------------|----------------|-----------|------|---------------------------------------|-----------------------|------------|--|---------------------------|--|
| mat'l code  |                | SEE NOTES |      | tolerances unless otherwise specified |                       | CUSTOMER   |  | <br>www.fciconnect.com    |  |
| ltr         | ecn no.        | dr        | date | linear                                | .XX±.01/0.X±0.3       | COPY       |  | title                     |  |
| C           |                |           |      | angles                                | .XXX±.005/0.XX±0.13   | projection |  | 3ACP + 48S + 5P           |  |
|             |                |           |      | dr                                    | .XXX±.0005/0.XXX±.051 |            |  | RIGHT ANGLE SOLDER HEADER |  |
|             |                |           |      | enrg                                  | 0°±2°                 | INCH/MM    |  | product family            |  |
|             |                |           |      | chr                                   | C. BAROT 05-07-00     | scale      |  | PwrBlade                  |  |
|             |                |           |      | appd                                  | J. BROWN 05-07-00     | 1:1        |  | code                      |  |
|             |                |           |      |                                       | J. BROWN 05-07-00     | A          |  | 213                       |  |
| sheet index | revision sheet |           |      |                                       |                       |            |  | size                      |  |
|             |                |           |      |                                       |                       |            |  | dwg no                    |  |
|             |                |           |      |                                       |                       |            |  | 51783                     |  |
|             |                |           |      |                                       |                       |            |  | sheet                     |  |
|             |                |           |      |                                       |                       |            |  | 3                         |  |

cage code 22526

## Looking for pricing, stock, or lifecycle information?

Click below to explore more details on WIN SOURCE:

 [View 51783-001LF on WIN SOURCE](#)

 [Amphenol Information](#)

## Optimize Your Supply Chain with WIN SOURCE Solutions

-  Global Sourcing Solution
-  Obsolete Management
-  Cost Control Management
-  Shortage Management
-  Alternative Solution
-  Excess Inventory Management