

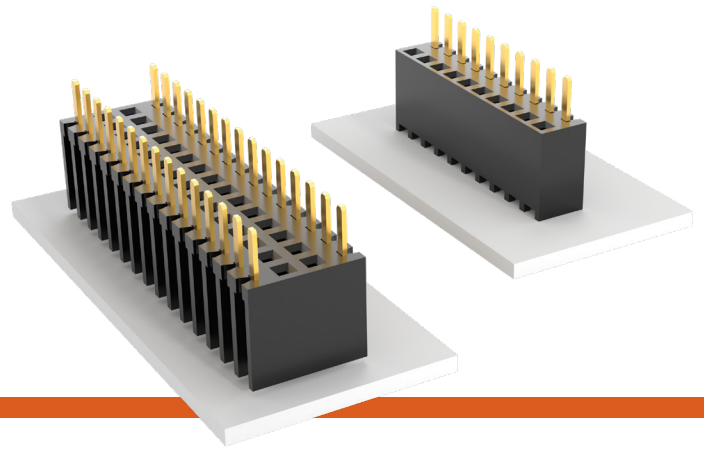


**THE DATASHEET OF
BSW-125-04-L-S**



BOTTOM MOUNT SOCKET STRIPS

(2.54 mm) .100" PITCH • BSW SERIES



BSW

Mates:

TSW, MTSW, HTSW,
MTLW, TSM, EW, ZW,
HW, DW, PHT

FEATURES

- Bottom mount socket strips accept .025" SQ terminals.
- Ideal for soldering and plugging from the same side of the board.
- For low profile connections and high temperature soldering.

SPECIFICATIONS

Insulator Material:

Black Thermoplastic

Insulation Resistance:

5000 MΩ min

Contact Material:

Phosphor Bronze

Plating:

Au or Sn over

50 μ" (1.27 μm) Ni

Operating Temp Range:

-55 °C to +125 °C with Gold

-55 °C to +105 °C with Tin

Withstanding Voltage:

1000 VRMS @ 60 Hz

Insertion Depth:

(3.68 mm) .145" to

(6.35 mm) .250" plus board thickness

PROCESSING

Lead-Free Solderable:

Wave only

ALSO AVAILABLE

MOQ Required

Other Platings

Note:

Some lengths, styles and options are non-standard, non-returnable.

BSW	1	NO. PINS PER ROW	LEAD STYLE	PLATING OPTION	ROW OPTION
-----	---	------------------	------------	----------------	------------

02 thru 36

-04
= Standard Lead

-24
= Low Insertion Force

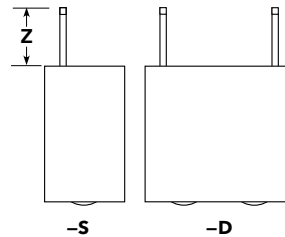
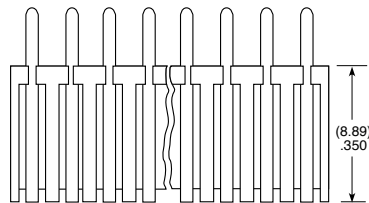
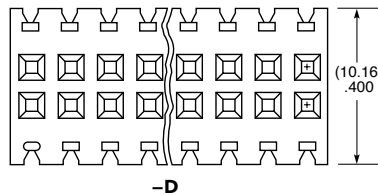
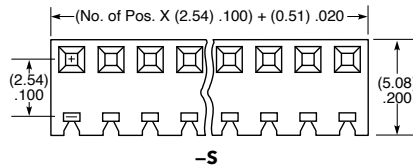
-L
= 10 μ" (0.25 μm) Gold contact, Matte Tin on tail

-G
= 20 μ" (0.51 μm) Gold contact, Gold Flash on tail

-T
= Matte Tin (Not available with Low Insertion Force)

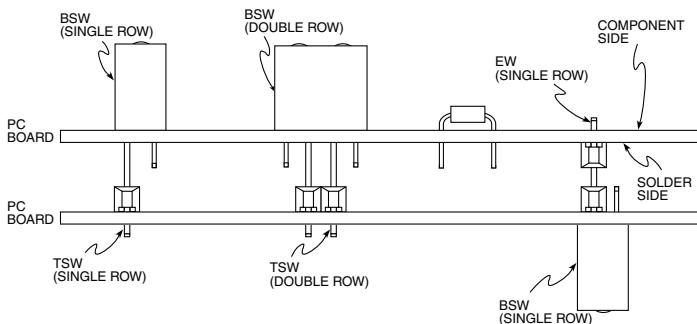
-S
= Single Row

-D
= Double Row





ROW OPTION	Z
-S	(4.31) .170
-D	(4.32) .170

APPLICATIONS



Looking for pricing, stock, or lifecycle information?

Click below to explore more details on WIN SOURCE:

-  [View BSW-125-04-L-S on WIN SOURCE](#)
-  [Samtec Inc. Information](#)

Optimize Your Supply Chain with WIN SOURCE Solutions

-  Global Sourcing Solution
-  Obsolete Management
-  Cost Control Management
-  Shortage Management
-  Alternative Solution
-  Excess Inventory Management