



**THE DATASHEET OF**  
**1571986-8**

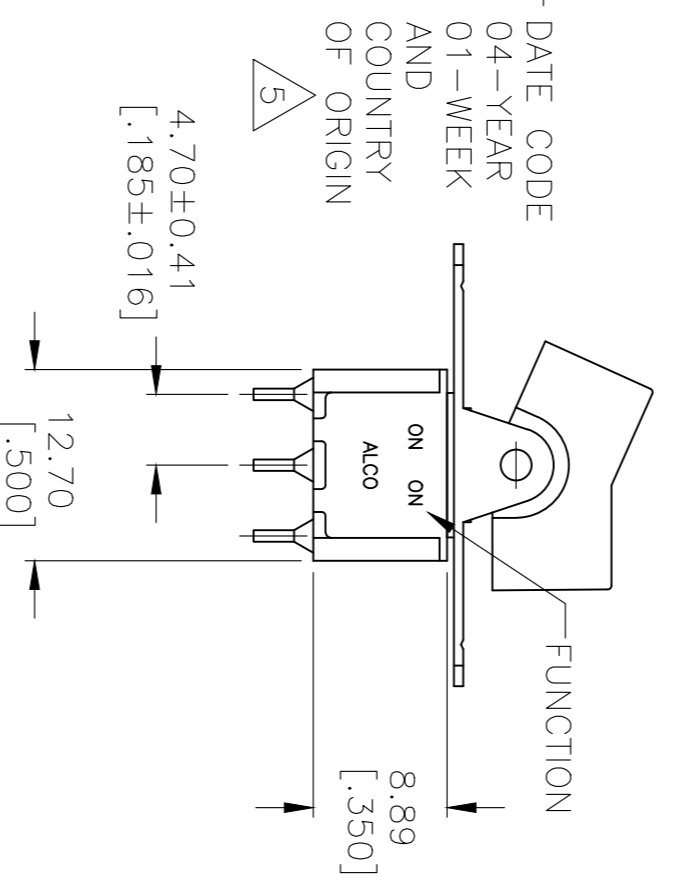


REVISIONS					
P	LTR	DESCRIPTION	DATE	DMN	AP'D
	A12	REVISED PER ECO-17-001761	10MAY2017	RK	AS

3

2

1



- 1 ALL MATERIALS AND FINISHES SHALL COMPLY WITH EU DIRECTIVE 2002/95/EC OF 27JAN2003 (ROHS).
- 2 CONTACT OPTION CAN BE USED FOR SIGNAL OR POWER LEVEL SWITCHING. IF SWITCH IS USED AT LEVELS EXCEEDING .4VA @ 20V AC/DC, SWITCH IS RENDERED FOR POWER SWITCHING ONLY DUE TO ARC REMOVAL OF GOLD PLATING. RATING MARKED ON SWITCH IS 2A 250VAC, 5A 120VAC.
- 3 TE CONNECTIVITY LOGO PER PER TEC-202-36.
- 5 DATE CODE AND COUNTRY OF ORIGIN MAY APPEAR ON EITHER SIDE OF SWITCH.
- 6 PANEL MOUNT BRACKET SUPPLIED WITH TERMINALS W, Z AND Z3 ONLY.
- 7 ACTUATOR MARKED  -
- 8 ACTUATOR MARKED  0
- 9 ACTUATOR MARKED  -
- 10 ALL LOGO, RATING, DATE CODE, AND FUNCTION MARKINGS TO BE LASER MARKED.
- 11 OBSOLETE
- 12 GRAY ACTUATOR WITH MODIFIED BRACKET (SUPPORT BRACKET TRIMMED PARALLEL TO THE PCB)

DATE CODE	04-YEAR	01-WEEK
AND COUNTRY OF ORIGIN	5	
4.70±0.41	[.185±.016]	
12.70	[.500]	
8.89	[.350]	
FUNCTION	ON	ON
ALCO	ON	ON
1 2 3	ON	ON
NE	ON	ON
F	ON	(ON)
F	(ON)	(ON)
F	(ON)	(ON)
NE	(ON)	(ON)
-	1-2	

1571986

### PART NUMBER SEQUENCE CHART

MODEL	FUNCTION	ACTUATOR	TERMINAL	CONTACT	ACTUATOR COLOR	BEZEL COLOR	ROHS
A1							04
	01	J1	A	B	0 BLACK (STD)	0 BLACK (STD)	
	03	J3	AV2	G	1 BROWN	1 BROWN	
	05	J50	C	Q	2 RED	2 RED	
	07	J51	V3		3 ORANGE	3 ORANGE	
	08	J52	V4		4 YELLOW	4 YELLOW	
		J2	V6		5 GREEN	5 GREEN	
		J4	V7		6 BLUE	6 BLUE	
		J60	W		8 GRAY	8 GRAY	
		J61	W4		9 WHITE	9 WHITE	
		J62	Z				
			Z3				

AL CONNECTION

NS

MAX @20V MAX. AC OR DC

@20V MAX. AC OR DC OR

VAC OR 28 VDC (RESISTIVE)

@250 VAC (RESISTIVE)

VAC OR 28 VDC (RESISTIVE)

@250 VAC (RESISTIVE)

CYCLES AT RATED LOAD

MAX INITIAL @ 2-4VDC, 100MA

.000 MEGOHMS MIN

V RMS AT SEA LEVEL

-30C TO 85C

THIS DRAWING IS A CONTROLLED DOCUMENT.

DMN	OBANOS	NAME	TE Connectivity
M.BINNER	OBANOS		
CHK	M.ZITTO		
AP'D	M.ZITTO		
Product SPEC			
APPLICATION SPEC			
WEIGHT			
CUSTOMER DRAWING			

DIMENSIONS: mm [INCHES]

TOLERANCES UNLESS OTHERWISE SPECIFIED:

0 PLC ±

1 PLC ±

2 PLC ±

3 PLC ± 0.25[0.01]

4 PLC ±

ANGLES ±

FINISH

MATERIAL

SIZE

A2

00779

1571986

SCALE 2:1

SHEET 1 of 5

REV A12

RESTRICTED TO

A

B

C

D

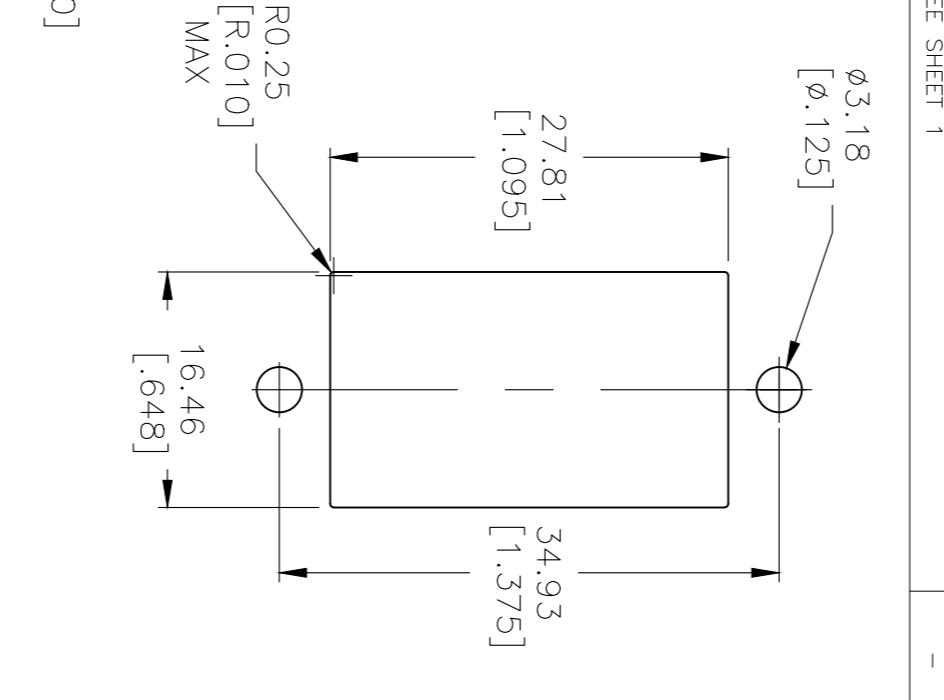
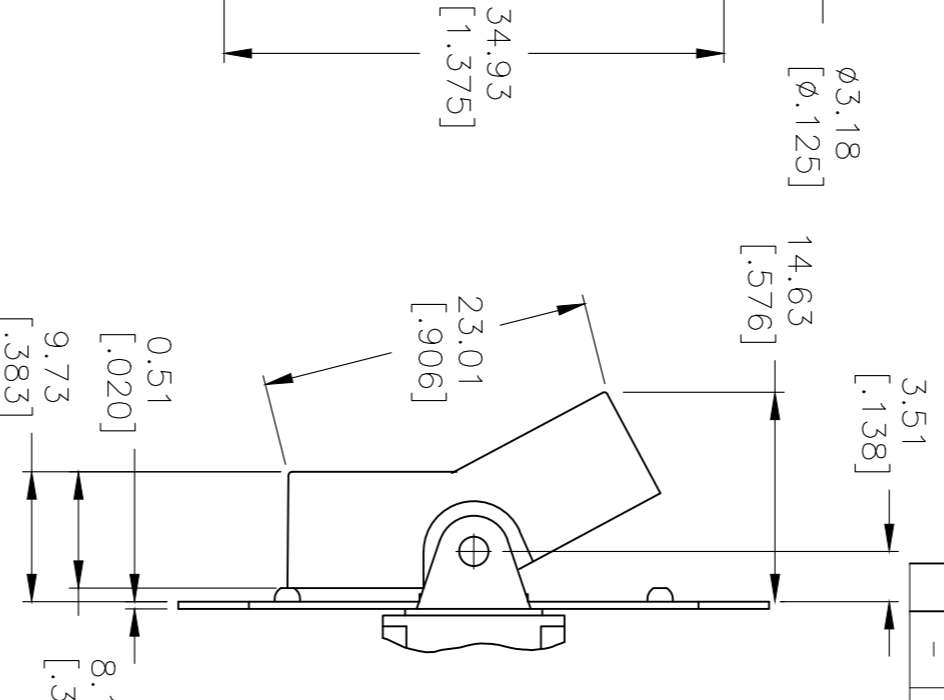
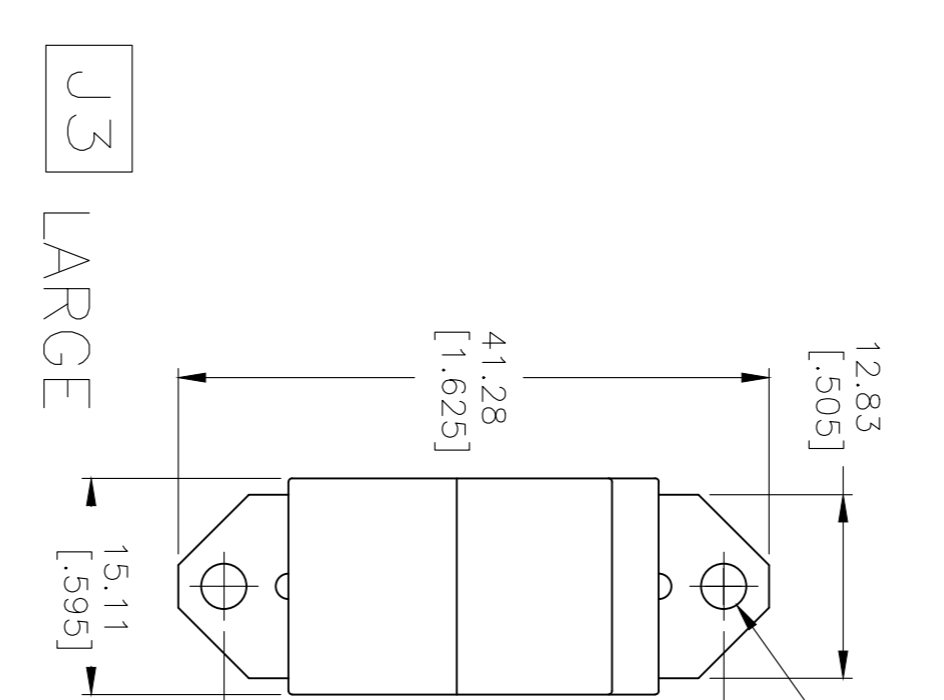
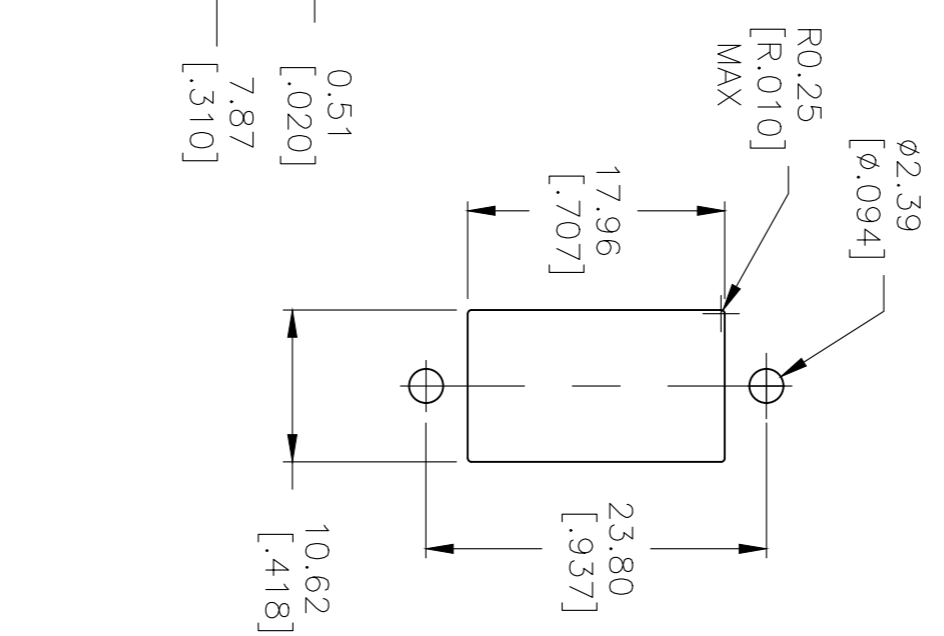
P	LTR	DESCRIPTION	DATE	DMN	AP'D
-	-	SEE SHEET 1	-	-	-

REVISIONS

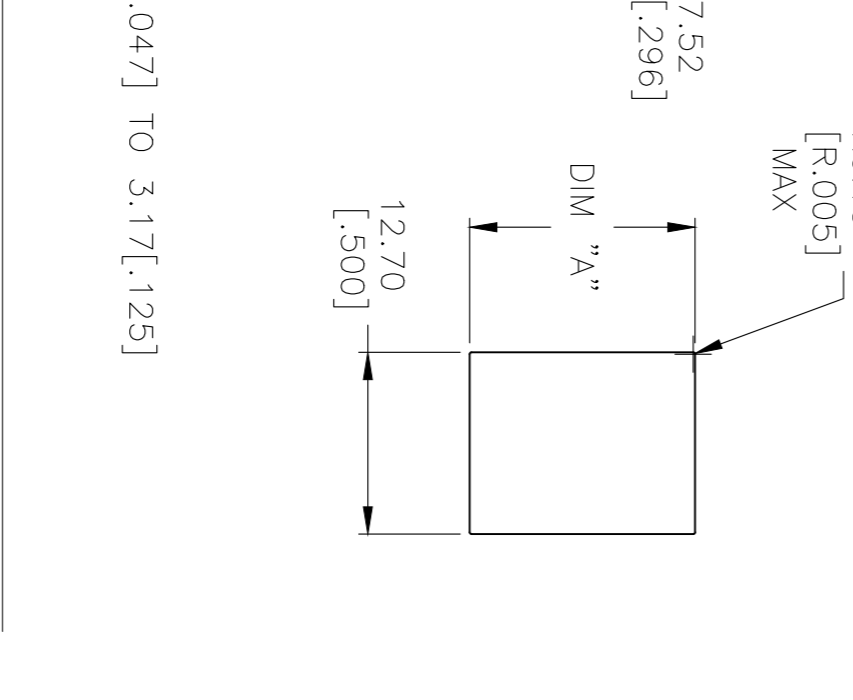
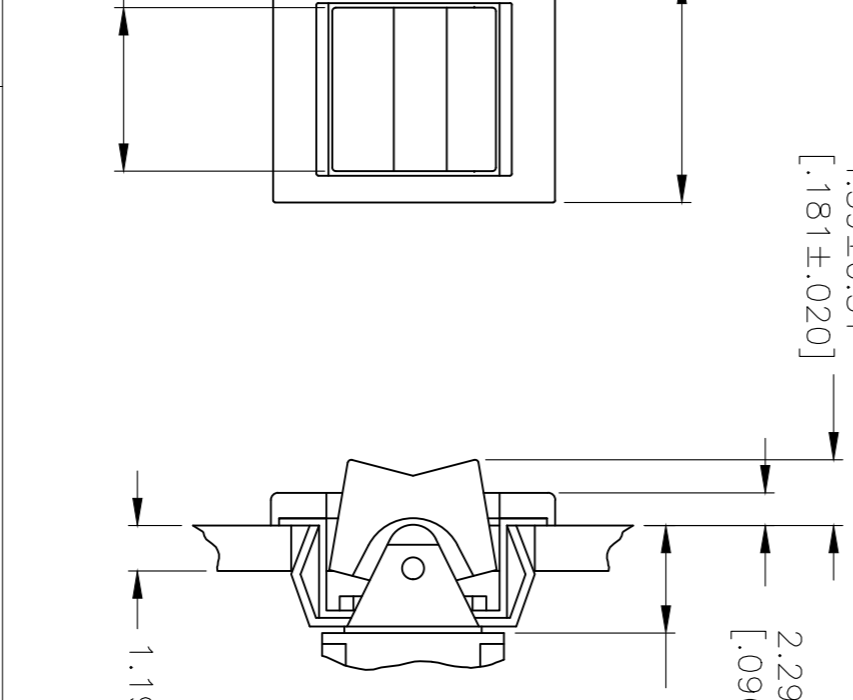
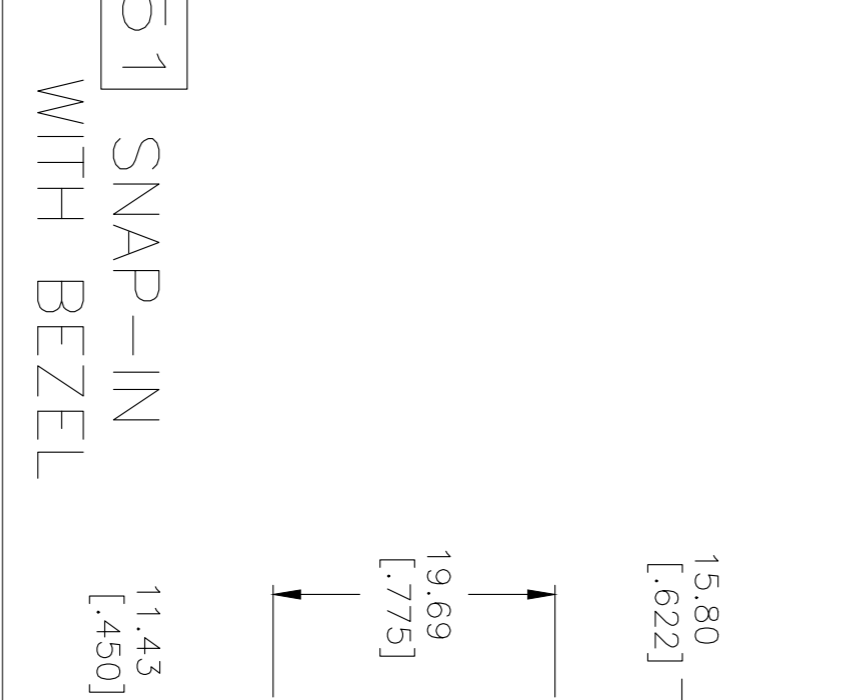
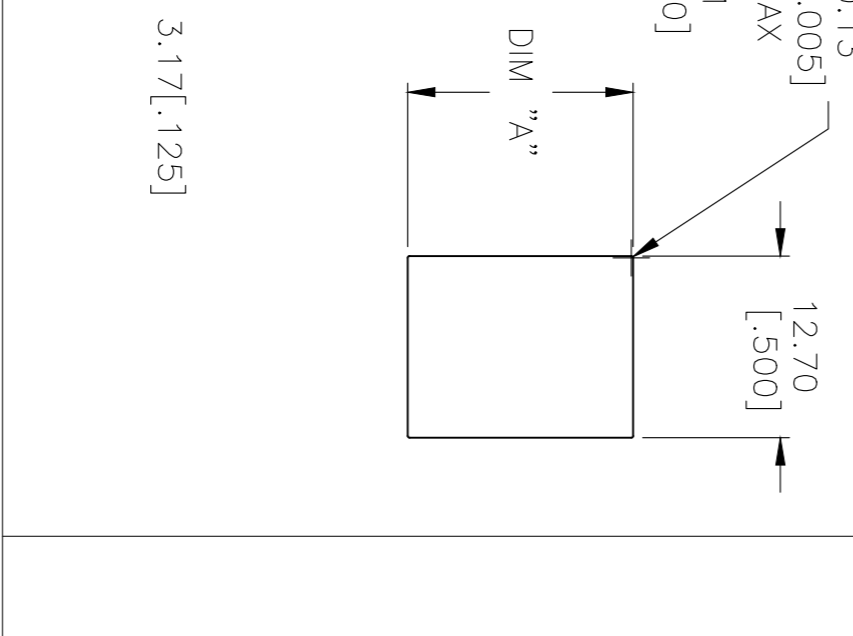
3

2

1



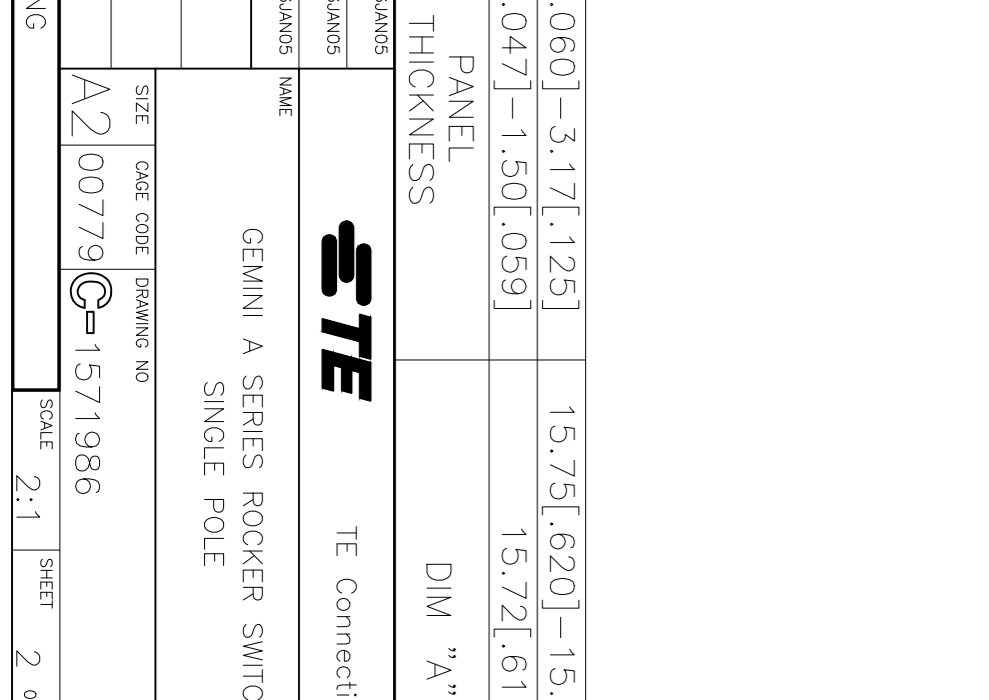
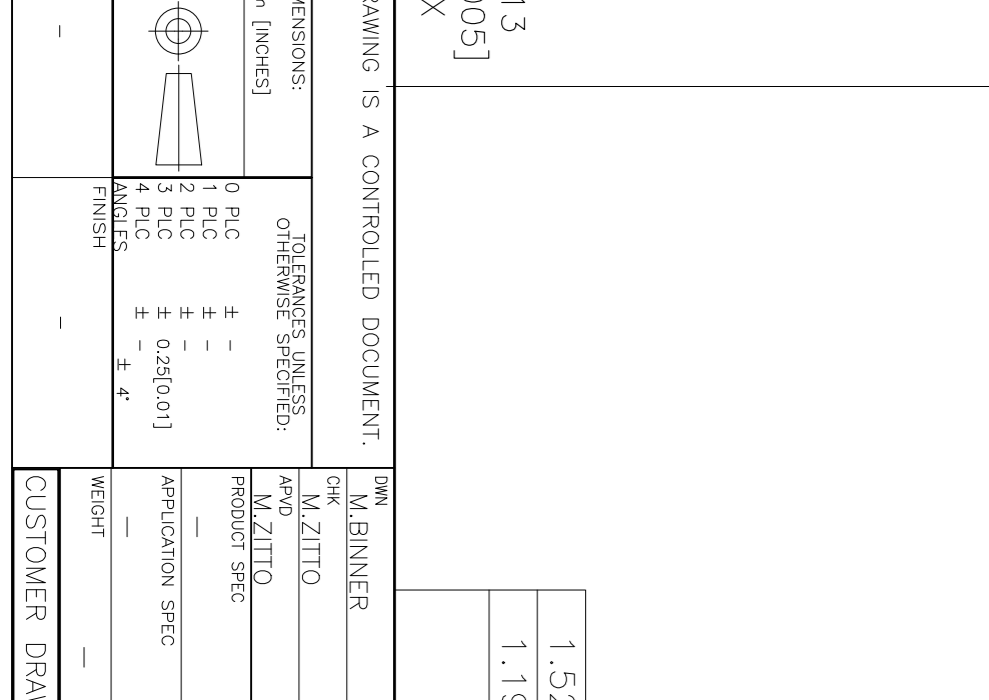
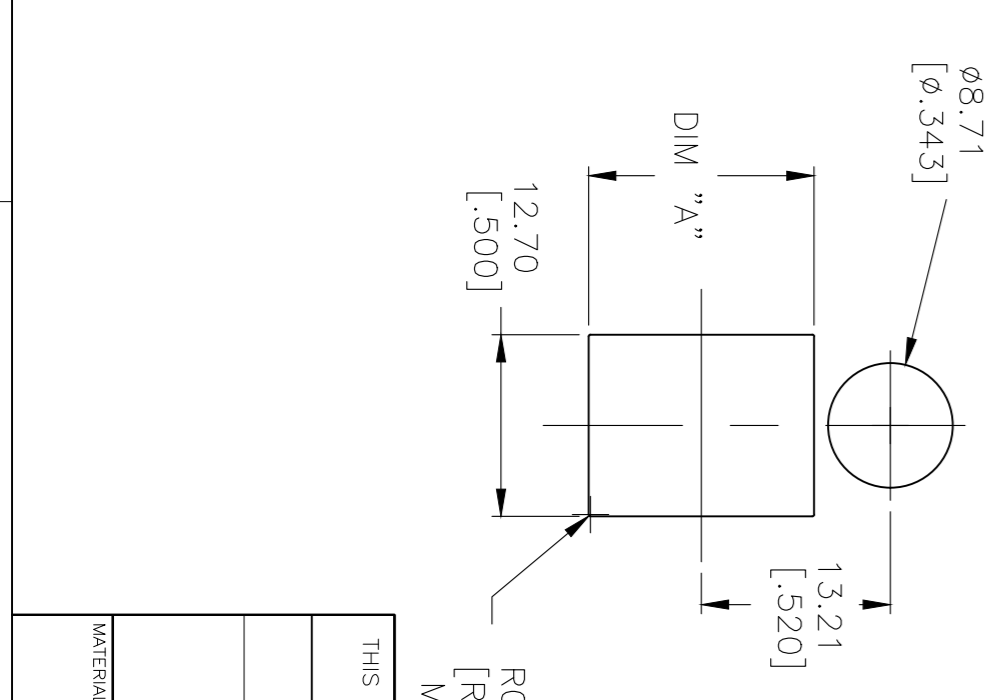
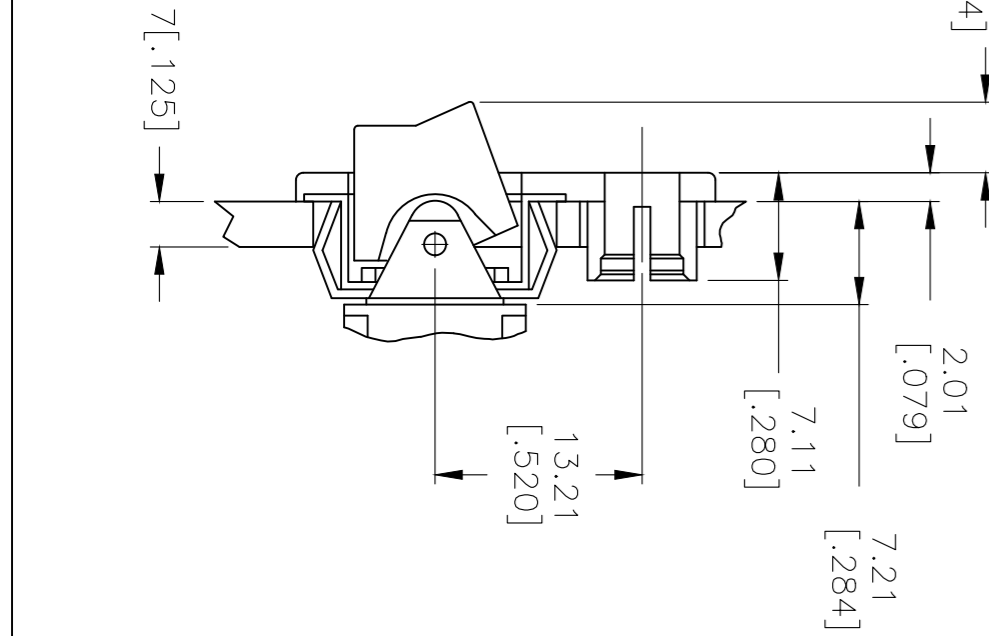
D



C

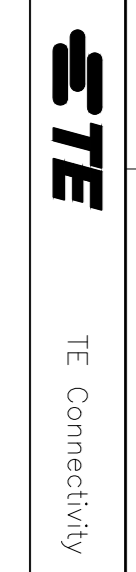
J51 SNAP-IN WITH BEZEL

B 1571986



A

THIS DRAWING IS A CONTROLLED DOCUMENT.		DMN	OSLANDS	NAME	GEMINI A SERIES ROCKER SWITCH	
DIMENSIONS:		CHK	M.BINNER	SIZE	QAGE CODE	DRAWING NO
mm [INCHES]		AP'D	M.ZITTO	A2	00779	1571986
TOLERANCES UNLESS OTHERWISE SPECIFIED:		PRODUCT SPEC	OSLANDS	SCALE	2:1	SHEET 2 OF 5
0 PLC ±		APPLICATION SPEC	THICKNESS	REV	A12	RESTRICTED TO
1 PLC ±		WEIGHT	DIM "A"	-		
2 PLC ±		CUSTOMER DRAWING	-			
3 PLC ± 0.25 [0.01]						
4 PLC ± 4°						
FINISH						
MATERIAL						



A

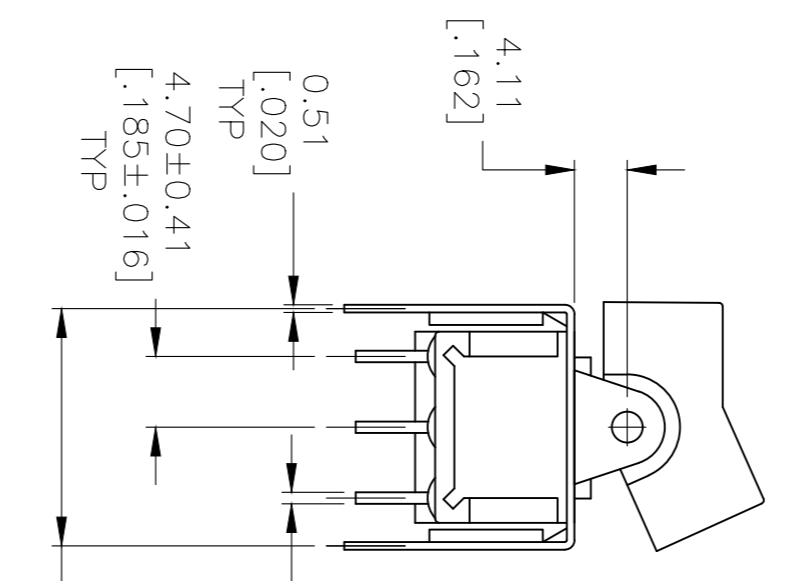
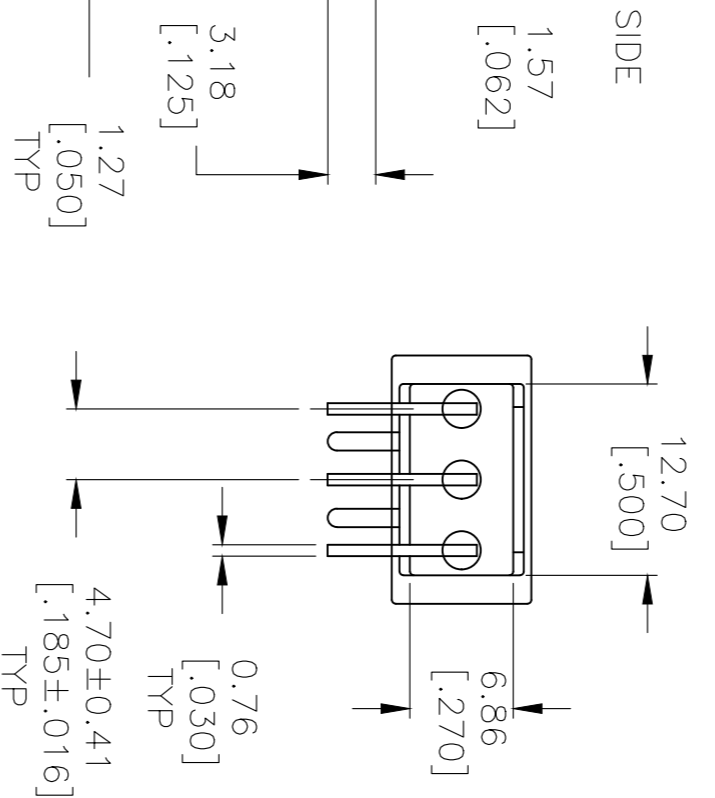


REVISIONS			
P	LR	DESCRIPTION	DATE
-	-	SEE SHEET 1	-

3

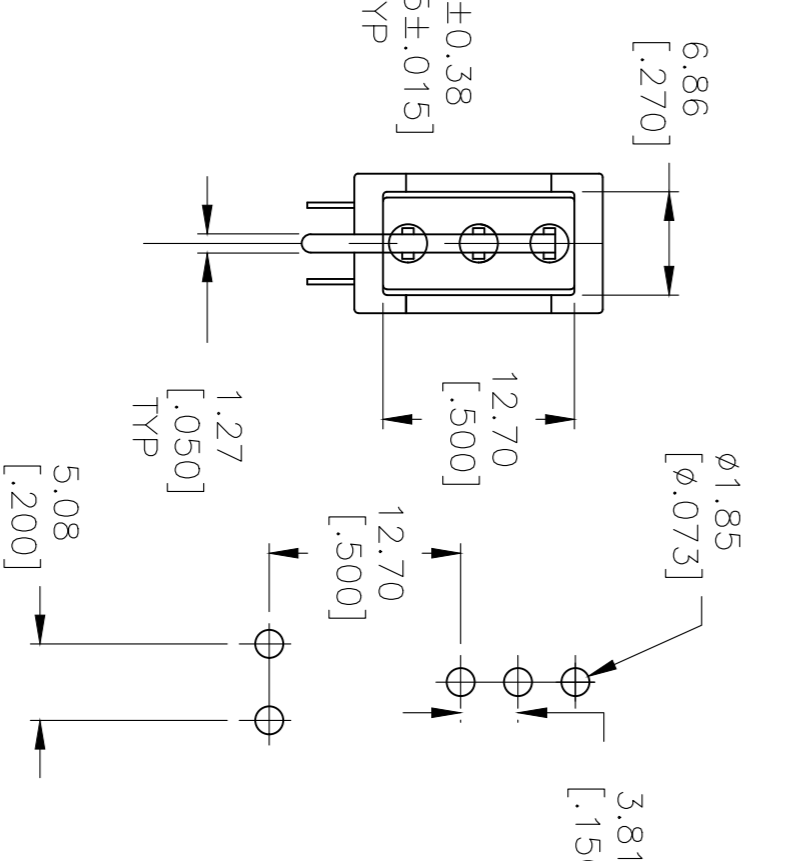
2

1



VERTICAL SUPPORT BRACKET

OPTION CODE	DIM "A"
V3	11.68 [.460]
V4	16.00 [.630]



V6 V7

VERTICAL SUPPORT BRACKET

OPTION CODE	DIM "A"
V6	11.68 [.460]
V7	16.00 [.630]

THIS DRAWING IS A CONTROLLED DOCUMENT.

DIMENSIONS: mm [INCHES]	TOLERANCES UNLESS OTHERWISE SPECIFIED:	0 PLC ± .15	1 PLC ± .10	2 PLC ± .075	3 PLC ± .05	4 PLC ± .025 [0.01]
MATERIAL		FINISH				

DMN: 06JAN05  
M.BINNER  
CHK: M.ZITTO  
APD: M.ZITTO  
PRODUCT SPEC

06JAN05  
M.ZITTO  
APPLICATION SPEC

WEIGHT: -

CUSTOMER DRAWING

**STE** TE Connectivity

GEMINI A SERIES ROCKER SWITCH  
SINGLE POLE

SIZE: A2  
PAGE CODE: 00779  
DRAWING NO: 1571986  
SCALE: 2:1

RESTRICTED TO: -

SHEET: 4 OF 5  
REV: A12

1571986

B

A



Looking for pricing, stock, or lifecycle information?

Click below to explore more details on WIN SOURCE:

- [View 1571986-8 on WIN SOURCE](#)
- [TE Connectivity Information](#)

### Optimize Your Supply Chain with WIN SOURCE Solutions

- ✓ Global Sourcing Solution
- ✓ Obsolete Management
- ✓ Cost Control Management
- ✓ Shortage Management
- ✓ Alternative Solution
- ✓ Excess Inventory Management