



**THE DATASHEET OF  
BCR430UXTSA2**



# BCR430U

## Low Voltage Drop LED Driver IC

### Feature list

- Supply voltage from 6 V to 42 V
- Controls up to 100 mA LED current
- Typ. 135 mV saturation voltage at 50 mA
- LED current precision  $\pm 5\%$  at 95 mA
- Smart over temperature protection function

### Advantages with respect to discrete solutions

- Low BOM count
- Lower assembly cost
- Smaller form factor
- Higher reliability due to less parts and soldering joints

### Potential Applications

- LED strips
- LED displays and channel letters
- Architectural and landscape lighting
- Retail lighting

### Product Validation

- Qualified for industrial applications according to the relevant tests of JEDEC47/20/22

Product Name	Package
BCR430U	PG-SOT23-6

### Description

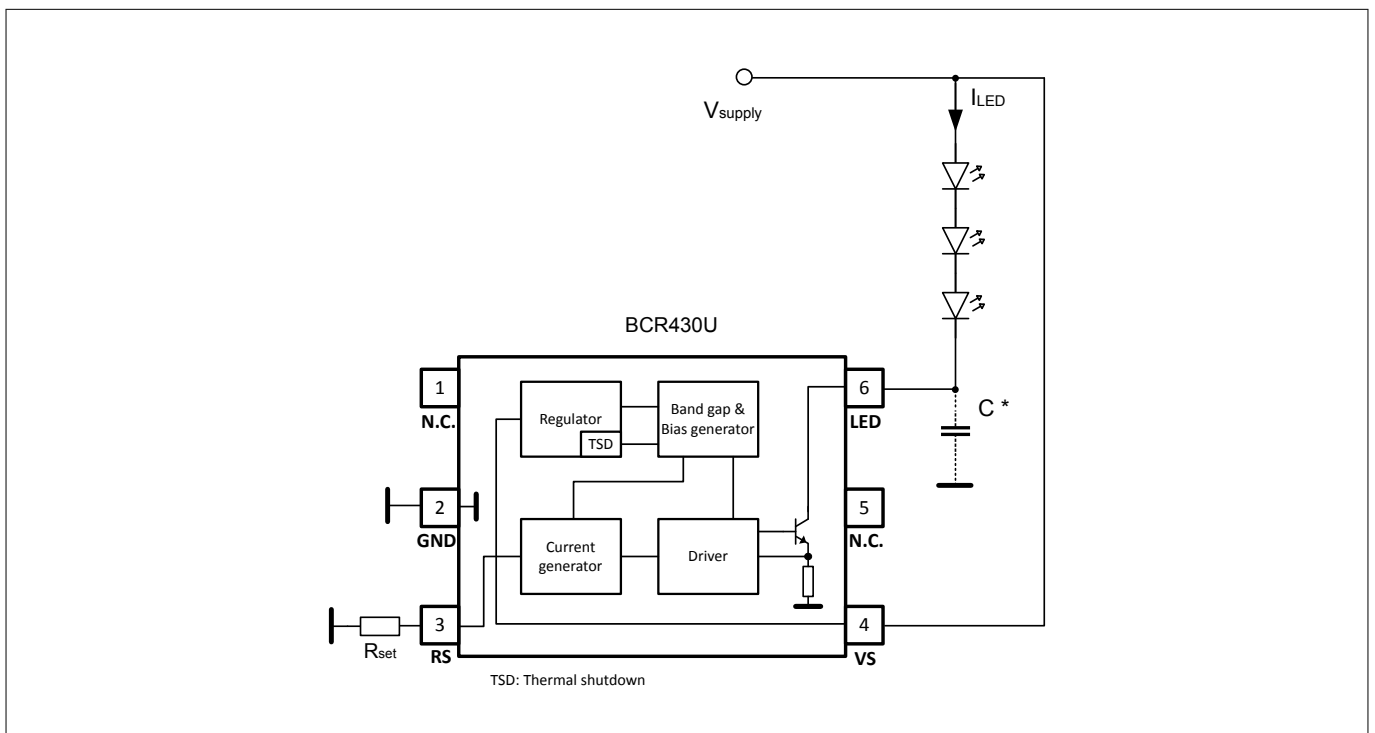
BCR430U is a linear LED driver IC in a small PG-SOT23-6 package regulating the LED current in standalone operation without any external power transistor. The IC supply voltage range is from 6 V up to 42 V. The LED current level can be adjusted up to 100 mA connecting a high ohmic resistor  $R_{set}$  to pin RS. The maximum voltage drop at the integrated LED driver stage is 200 mV at 50 mA improving the overall system efficiency and providing extra voltage headroom to compensate for tolerances of LED forward voltage or supply voltage. The smart over temperature protection function reduces the LED current when junction temperature of BCR430U is very high.

**Table of contents**

**Table of contents**

	Feature list .....	1
	Advantages with respect to discrete solutions .....	1
	Potential Applications .....	1
	Description .....	1
	Table of contents .....	2
<b>1</b>	<b>Application circuit .....</b>	<b>2</b>
<b>2</b>	<b>Pin configuration .....</b>	<b>3</b>
<b>3</b>	<b>Functional description .....</b>	<b>4</b>
<b>4</b>	<b>Electrical characteristics and parameters .....</b>	<b>6</b>
<b>5</b>	<b>Package dimensions .....</b>	<b>8</b>
<b>6</b>	<b>References .....</b>	<b>10</b>
	Revision history .....	10
	Disclaimer .....	11

**1 Application circuit**



**Figure 1 Typical Application Circuit of BCR430U**

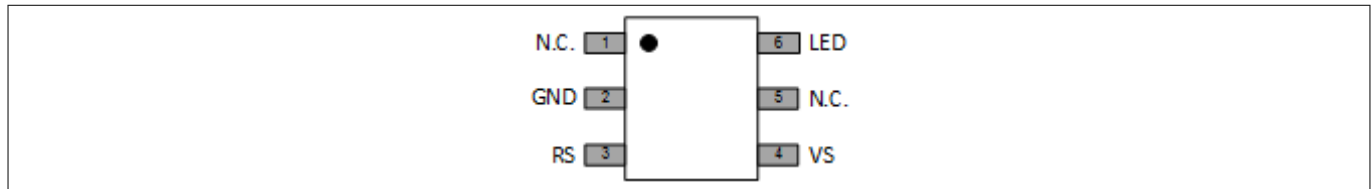
---

**Pin configuration**

\* A ceramic capacitor of 10nF in parallel to LED pin needed for a long line to compensate parasitic line inductance.

## 2 Pin configuration

Pin No.	Pin Name	Pin Type	Function
1	N.C.	-	Not connected
2	GND	GND	IC ground & thermal connection to heat spreader on PCB
3	RS	Output	Connection of Rset resistor
4	VS	Input	Supply voltage
5	N.C.	-	Not connected
6	LED	Input	Driver pin to control the LED current



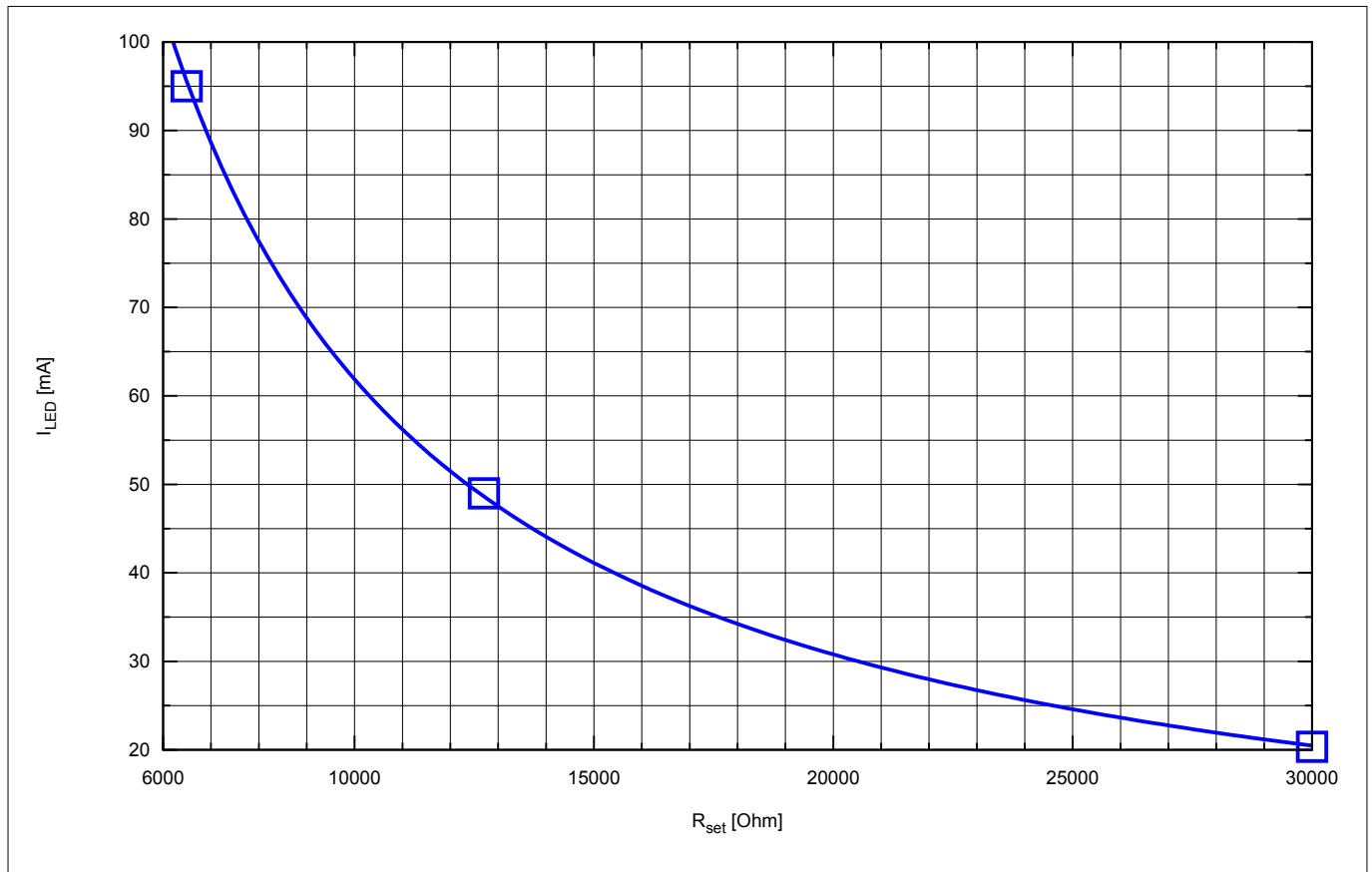
**Figure 2 Pinout BCR430U**

**Functional description**

### 3 Functional description

#### LED current configuration

The LED current is configured by the external resistor  $R_{set}$  at pin RS. The current flowing into pin LED is proportional to the current flowing out of pin RS by a ratio of about 520:1. Therefore, the LED current depends on the value of  $R_{set}$ .

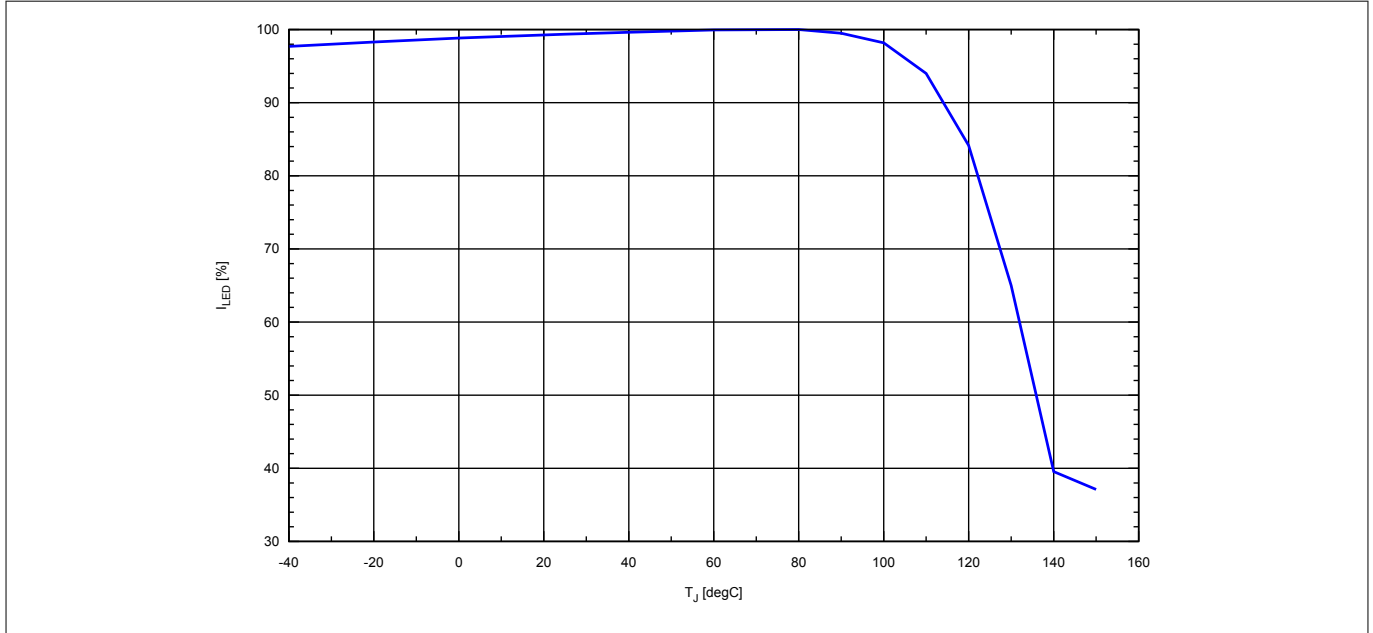


**Figure 3** Relation between  $I_{LED}$  and  $R_{set}$

**Functional description**

**Smart over temperature protection function**

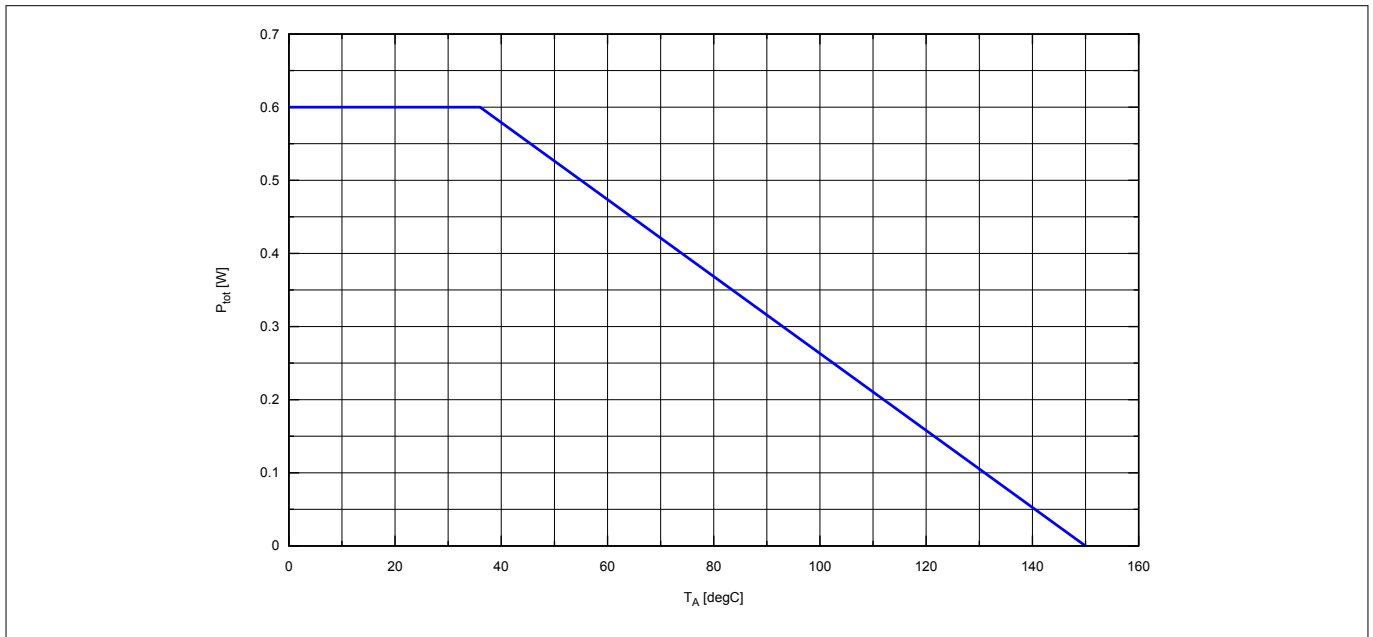
BCR430U reduces the LED current with increasing junction temperature by reducing the voltage at pin RS. The reduced voltage of pin RS drives less current through the external resistor Rset, causing the current into pin LED to reduce. The LED current is never turned off fully.



**Figure 4** Relative reduction of LED current versus junction temperature of BCR430U

**Maximum Permitted Power Dissipation**

To avoid damage of the IC the power dissipation of BCR430U must be reduced with increasing ambient temperature according to [Figure 5](#).



**Figure 5** Maximum permitted total power dissipation of BCR430U on a JESD 51-7 board

**Electrical characteristics and parameters**

**4 Electrical characteristics and parameters**

**Table 1** Maximum Ratings at  $T_A = 25\text{ }^\circ\text{C}$ , unless otherwise specified

Parameter	Symbol	Values			Unit	Note or test condition
		Min.	Typ.	Max.		
Junction temperature	$T_J$	-40	-	150	$^\circ\text{C}$	
Supply voltage	$V_S$	0	-	45	V	
Voltage at LED pin	$V_{LED}$	0	-	20	V	
Driver LED current	$I_{LED}$	0	-	100	mA	
RS maximum voltage	$V_{RS}$	0	-	5	V	
RS output current	$I_{RS}$	0	-	0.3	mA	
Power dissipation	$P_{tot}$	-	-	600	mW	JESD 51-7 test board, $T_A \leq 36\text{ }^\circ\text{C}$
ESD robustness of all the pins apart from $V_S$ pin	$V_{ESD,HBM}$	4	-	-	kV	HBM according to JEDEC JS-001
ESD robustness of $V_S$ pin	$V_{ESD V_S,HBM}$	5	-	-	kV	HBM according to JEDEC JS-001

**Attention:** Stresses above the max. values listed here may cause permanent damage to the device.  
 Exposure to absolute maximum rating conditions for extended periods may affect device reliability.  
 Maximum ratings are absolute ratings; exceeding only one of these values may cause irreversible damage to the integrated circuit.

**Table 2** Thermal Resistance at  $T_A = 25\text{ }^\circ\text{C}$ , unless otherwise specified

Parameter	Symbol	Values			Unit	Note or Test Condition
		Min.	Typ.	Max.		
Thermal resistance junction to ambient	$R_{thJA,1s0p,0}$	-	-	288	K/W	JEDEC 1s0p (JESD 51-3) footprint w/o extra cooling area
	$R_{thJA,1s0p,300}$	-	-	182	K/W	JEDEC 1s0p (JESD 51-3) with 300 mm <sup>2</sup> cooling area connected to GND pin
	$R_{thJA,2s2p}$	-	-	190	K/W	JEDEC 2s2p (JESD 51-7)
Thermal resistance junction to soldering pint	$R_{thJS}$	-	70	-	K/W	

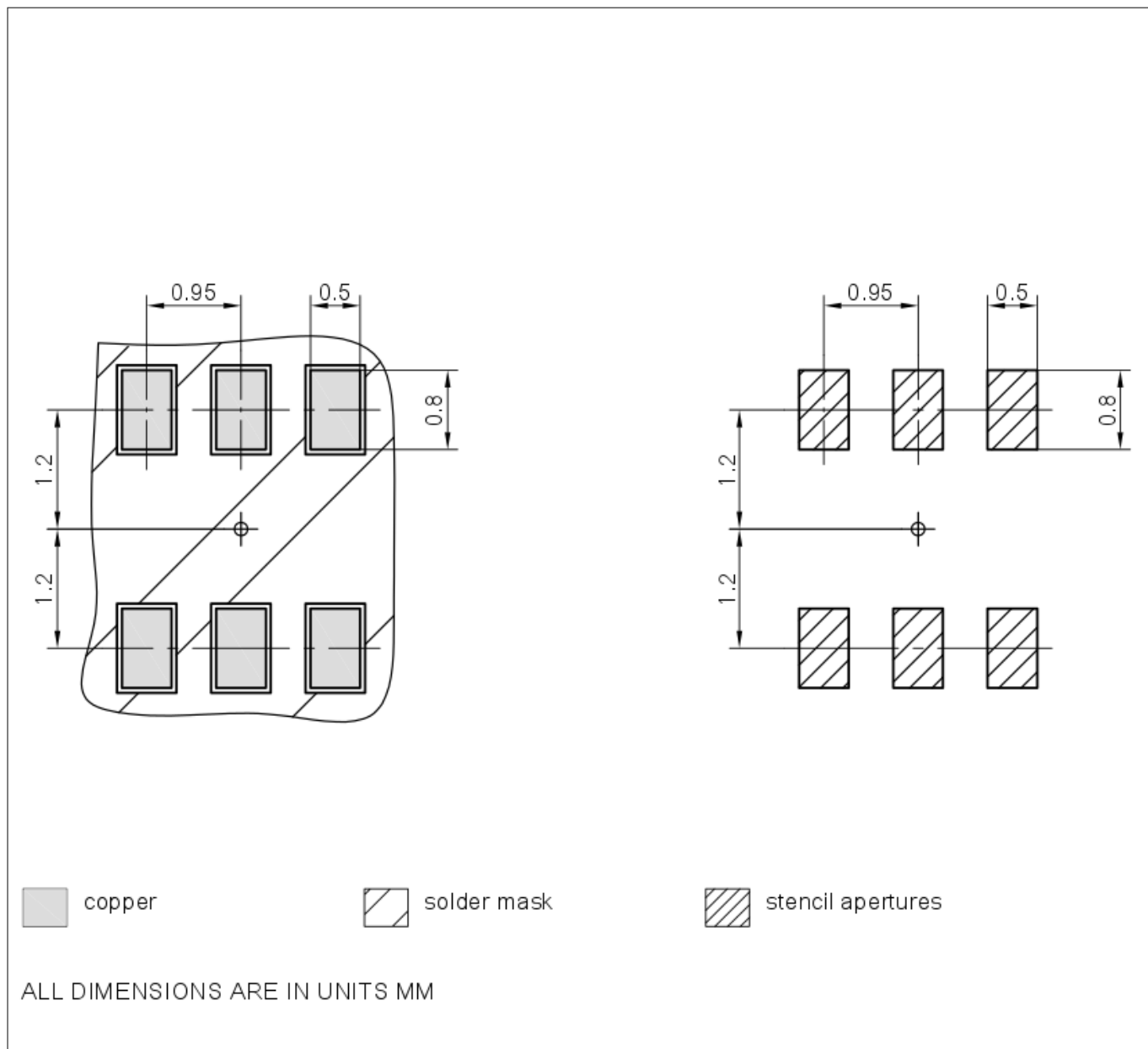
**Electrical characteristics and parameters**

**Table 3 Electrical Characteristics at  $T_A = 25\text{ }^\circ\text{C}$ , unless otherwise specified**

Parameter	Symbol	Values			Unit	Note or Test Condition
		Min.	Typ.	Max.		
Supply voltage	$V_S$	6	-	42	V	Operational voltage range
Supply current	$I_S$	1.2	1.7	2.2	mA	$R_{SET} = 12.7\text{ k}\Omega$ , $V_S = 6\text{ V}$ , $V_{LED} = 1\text{ V}$
		1.3	1.8	2.3		$R_{SET} = 12.7\text{ k}\Omega$ , $V_S = 42\text{ V}$ , $V_{LED} = 1\text{ V}$
Driver LED capability	$I_{LED}$	20	-	100	mA	$V_{LED} = 1\text{ V}$ , $V_S = 24\text{ V}$
Driver LED current by $R_{set}$	$I_{LED}$	18.0	20.4	22.7	mA	$R_{set} = 30\text{ k}\Omega$ , $V_{LED} = 1\text{ V}$ , $V_S = 24\text{ V}$
		45.7	49	52.3		$R_{set} = 12.7\text{ k}\Omega$ , $V_{LED} = 1\text{ V}$ , $V_S = 24\text{ V}$
		90	95	100		$R_{set} = 6.49\text{ k}\Omega$ , $V_{LED} = 1\text{ V}$ , $V_S = 24\text{ V}$
Driver saturation voltage	$V_{LED,sat}$	-	-	200	mV	$R_{SET} = 12.7\text{ k}\Omega$ , $V_S = 24\text{ V}$
RS pin voltage	$V_{RS}$	1.16	1.20	1.24	V	$I_{RS} = 0\text{ }\mu\text{A}$ , $V_S = 24\text{ V}$
		1.15	1.19	1.23		$I_{RS} = 200\text{ }\mu\text{A}$ , $V_S = 24\text{ V}$

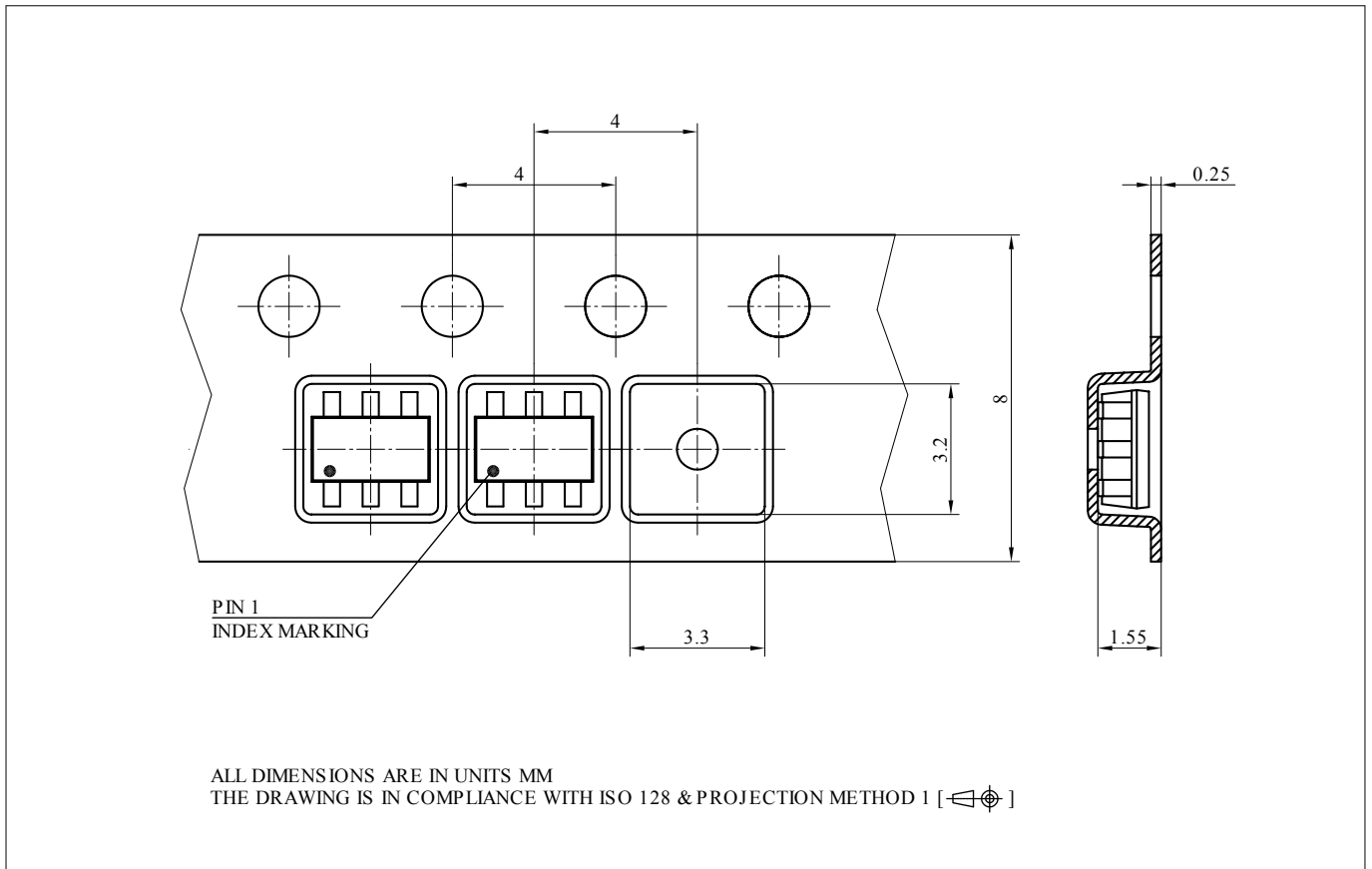


**Package dimensions**



**Figure 7**      **Footprint PG-SOT23-6**

**References**



**Figure 8**      **Tape & Reel PG-SOT23-6**

**6**      **References**

**Revision history**

Document version	Date of release	Description of changes
1.0	2017-10-09	First version of data sheet
1.1	2019-01-21	ESD note added, electrical characteristics updated
1.2	2020-03-03	ESD protection information added, electrical characteristics updated
1.3	2020-06-03	Updated ESD information, updated electrical characteristics test condition

## Trademarks

All referenced product or service names and trademarks are the property of their respective owners.

**Edition 2020-10-14**

**Published by  
Infineon Technologies AG  
81726 Munich, Germany**

**© 2020 Infineon Technologies AG  
All Rights Reserved.**

**Do you have a question about any  
aspect of this document?  
Email: [erratum@infineon.com](mailto:erratum@infineon.com)**

**Document reference  
IFX-rso1496044693434**

## IMPORTANT NOTICE

The information given in this document shall in no event be regarded as a guarantee of conditions or characteristics ("Beschaffheitsgarantie").

With respect to any examples, hints or any typical values stated herein and/or any information regarding the application of the product, Infineon Technologies hereby disclaims any and all warranties and liabilities of any kind, including without limitation warranties of non-infringement of intellectual property rights of any third party.

In addition, any information given in this document is subject to customer's compliance with its obligations stated in this document and any applicable legal requirements, norms and standards concerning customer's products and any use of the product of Infineon Technologies in customer's applications.

The data contained in this document is exclusively intended for technically trained staff. It is the responsibility of customer's technical departments to evaluate the suitability of the product for the intended application and the completeness of the product information given in this document with respect to such application.

## WARNINGS

Due to technical requirements products may contain dangerous substances. For information on the types in question please contact your nearest Infineon Technologies office.

Except as otherwise explicitly approved by Infineon Technologies in a written document signed by authorized representatives of Infineon Technologies, Infineon Technologies' products may not be used in any applications where a failure of the product or any consequences of the use thereof can reasonably be expected to result in personal injury.

## Looking for pricing, stock, or lifecycle information?

Click below to explore more details on WIN SOURCE:

- ⊖ [View BCR430UXTSA2 on WIN SOURCE](#)
- ⊖ [Infineon Technologies Information](#)

## Optimize Your Supply Chain with WIN SOURCE Solutions

- ✓ Global Sourcing Solution
- ✓ Obsolete Management
- ✓ Cost Control Management
- ✓ Shortage Management
- ✓ Alternative Solution
- ✓ Excess Inventory Management