



**THE DATASHEET OF
R1M-123.3S/SMD**



Specifications (measured @ $T_a = 25^\circ\text{C}$, nom. V_{in} , full load and after warm-up unless otherwise stated)

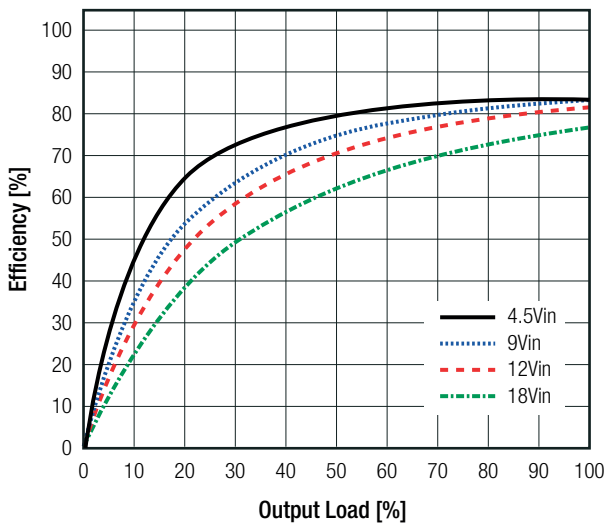
BASIC CHARACTERISTICS

Parameter	Condition	Min.	Typ.	Max.
Quiescent Current	nom. $V_{in} = 12\text{VDC}$		20mA	
	nom. $V_{in} = 24\text{VDC}$		10mA	
	nom. $V_{in} = 48\text{VDC}$		5mA	
Start-up time	power up, CTRL ON/OFF		10ms	20ms
ON/OFF CTRL ⁽⁴⁾	DC-DC ON	open or high impedance		
	DC-DC OFF	2mA	3mA	4mA
Standby Current	DC-DC OFF		2.5mA	
Internal Operating Frequency		100kHz		
Output Ripple and Noise	20MHz BW		30mVp-p	
Reflected Back Ripple Current	with external components	nom. $V_{in} = 12\text{VDC}$	15mA _{p-p}	
		nom. $V_{in} = 24\text{VDC}$	10mA _{p-p}	
		nom. $V_{in} = 48\text{VDC}$	5mA _{p-p}	

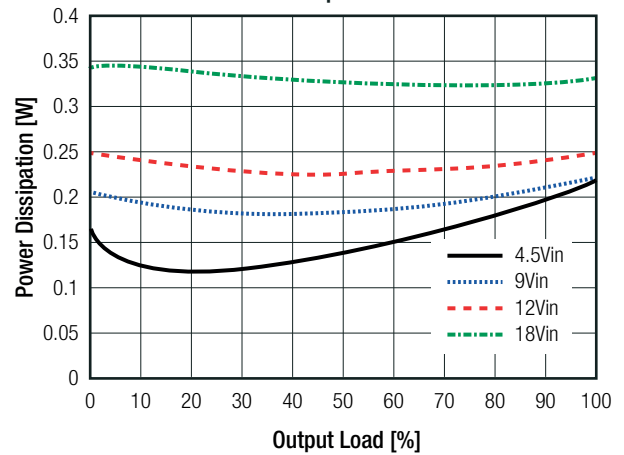
Notes:

Note4: Refer to "ON/OFF CTRL"

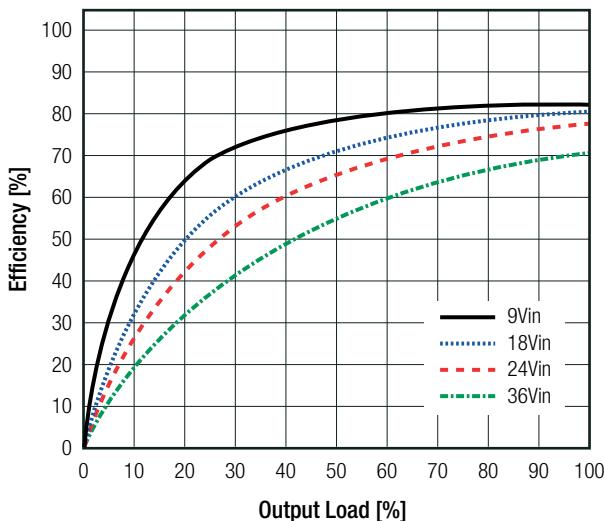
R1M-1212S/SMD Efficiency vs. Load



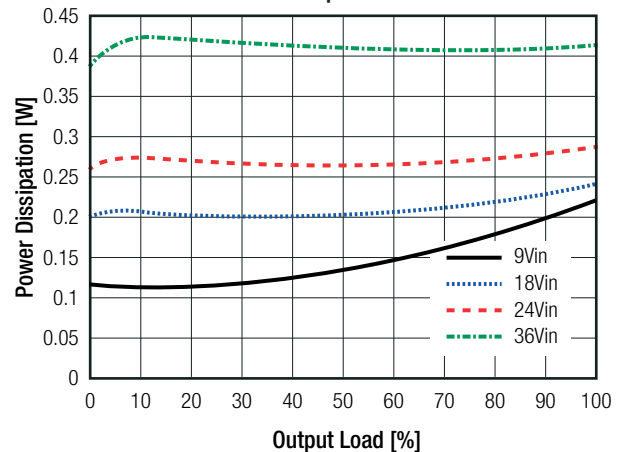
Power Dissipation vs. Load



R1M-2405S/SMD Efficiency vs. Load



Power Dissipation vs. Load

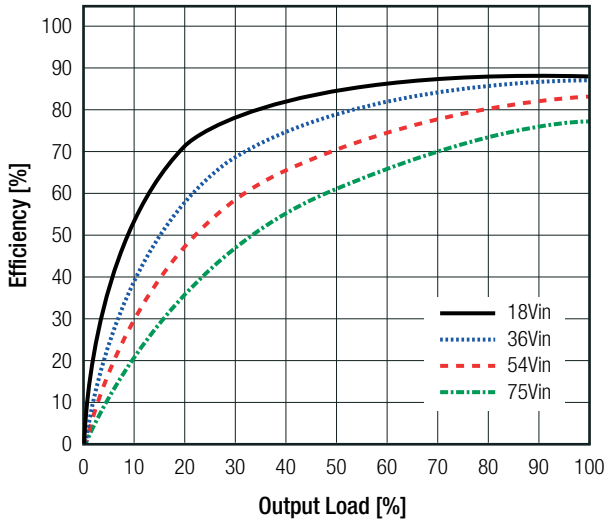


continued on next page

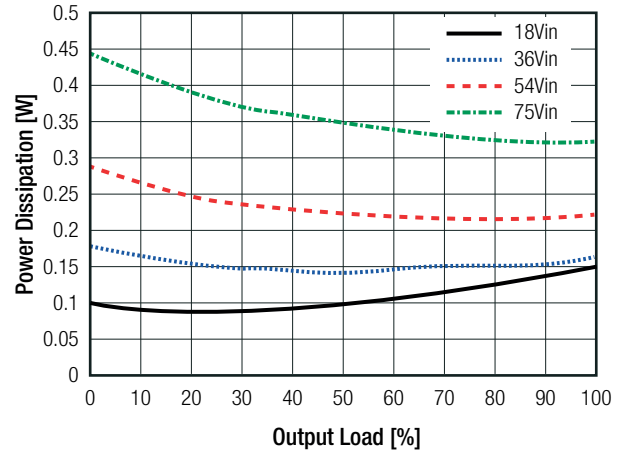
Specifications (measured @ $T_a = 25^\circ\text{C}$, nom. V_{in} , full load and after warm-up unless otherwise stated)

R1M-4812S/SMD

Efficiency vs. Load

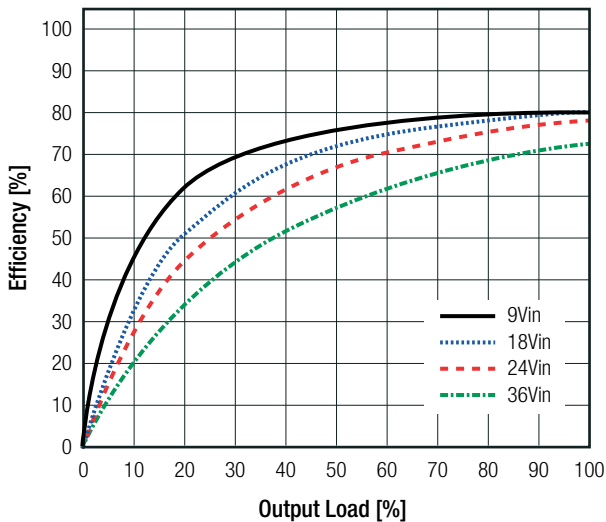


Power Dissipation vs. Load

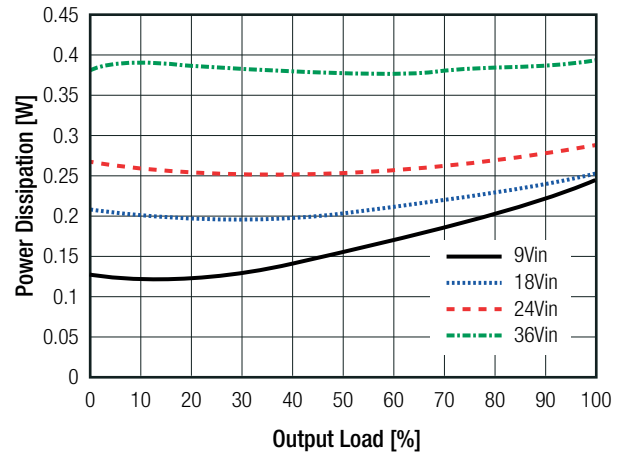


R1M-2405D/SMD

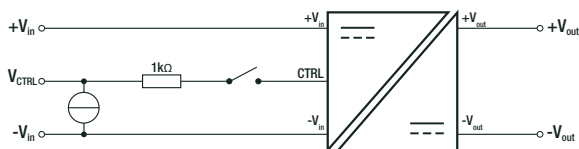
Efficiency vs. Load



Power Dissipation vs. Load



ON/OFF CTRL



DC-DC ON	Open or high impedance
DC-DC OFF	2.0mA to 4.0mA max.

Specifications (measured @ Ta= 25°C, nom. Vin, full load and after warm-up unless otherwise stated)

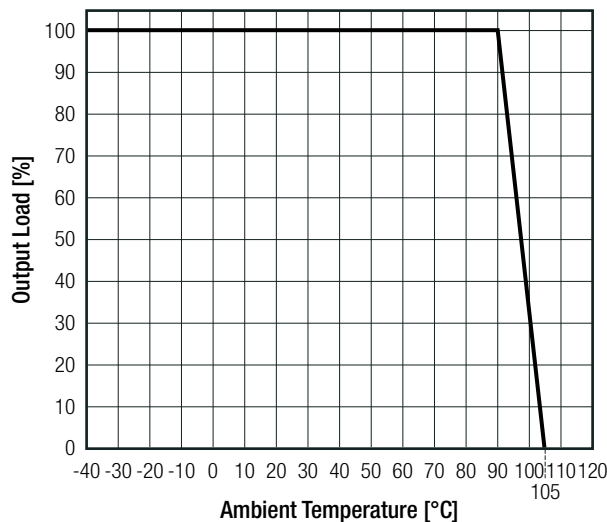
REGULATIONS			
Parameter	Condition	Value	
Output Accuracy		±1.0% max.	
Line Regulation	low line to high line, full load	±0.2% max.	
Load Regulation	0% to 100% load	single	1% max.
		dual	1% max.
	10% to 100% load	single	0.5% max.
		dual	0.8% max.
Cross Regulation	asymmetrical 25% / 100% load	±5% max.	
Transient Response Recovery Time	25% load step change	±500µs typ.	

PROTECTIONS		
Parameter	Type	Value
Short Circuit Protection (SCP)		continuous, auto recovery
Isolation Voltage ⁽⁵⁾	I/P to O/P 1 minute	1.6kVDC
Isolation Resistance	I/P to O/P, V _{iso} = 500VDC	1GΩ min.
Isolation Capacitance	I/P to O/P, 100kHz/0.1V	50pF typ.
<p>Notes: Note5: This power module is not internally fused. An input line fuse must always be used Recom suggests: 12Vin=T0.5A; 24Vin=T0.315A; 48Vin=T0.16A slow blow</p>		

ENVIRONMENTAL		
Parameter	Condition	Value
Operating Temperature Range	with derating	-40°C to +105°C
	without derating	-40°C to +90°C
Maximum Case Temperature	measured at "tc point"	+105°C
Operating Humidity	non-condensing	5% - 95% RH max.
Thermal Shock		according to MIL-STD-810F
Vibration		according to MIL-STD-810F
MTBF	according to MIL-HDBK-217F, G.B. +25°C	8534 x 10 ³ hours

Derating Graph

(@ Chamber and natural convection 0.1m/s)

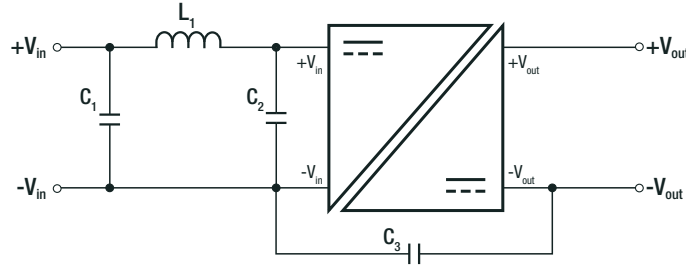


Specifications (measured @ Ta= 25°C, nom. Vin, full load and after warm-up unless otherwise stated)

SAFETY AND CERTIFICATIONS

Certificate Type (Safety)	File Number	Standard
RoHS2		RoHS-2011/65/EU + AM-2015/863
EMC Compliance	Condition	Standard / Criterion
Electromagnetic compatibility of multimedia equipment – Emission Requirements	with external filter refer to “ EMC Filtering ”	EN55032, Class A and B

EMC Filtering Suggestions according to EN55032



Class A Component List

Model	C1	C2	C3	L1
R1M-12xxS	10µF	N/A	N/A	4.7µH
R1M-24xxS	4.7µF	N/A	N/A	22µH
R1M-48xxS	2.2µF	N/A	150pF	39µH

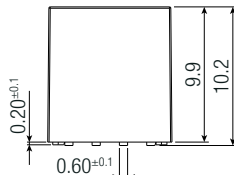
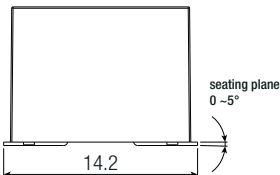
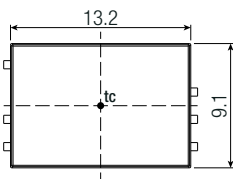
Class B Component List

Model	C1, C2	C3	L1
R1M-12xxS	10µF	100pF	4.7µH
R1M-24xxS	4.7µF	150pF	22µH
R1M-48xxS	2.2µF	150pF	39µH

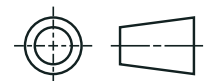
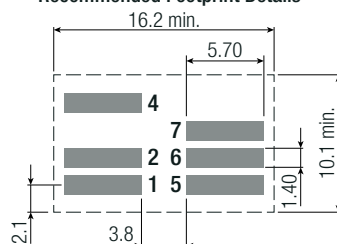
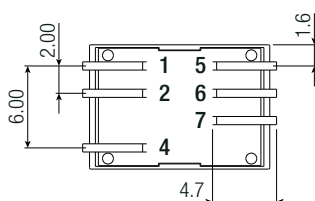
DIMENSION AND PHYSICAL CHARACTERISTICS

Parameter	Type	Value
Material	baseplate/case	black plastic, (UL94 V-0)
	potting	silicone (UL94 V-0)
Dimension (LxWxH)		14.2 x 9.1 x 10.2mm
Weight		2.7g typ.

Dimension Drawing (mm)



Recommended Footprint Details



Pinning Information

Pin #	Single	Dual
1	+Vin	+Vin
2	-Vin	-Vin
4	CTRL	CTRL
5	NC	-Vout
6	-Vout	COM
7	+Vout	+Vout

NC= no connection

Tolerance:
xx.x = ±0.5mm
xx.xx = ±0.25mm

Specifications (measured @ Ta= 25°C, nom. Vin, full load and after warm-up unless otherwise stated)

PACKAGING INFORMATION		
Parameter	Type	Value
Packaging Dimension (LxWxH)	tube	218.0 x 17.2 x 19.9mm
Packaging Quantity		20pcs
Storage Temperature Range	non-condensing	-55°C to +125°C
Storage Humidity		5% to 95% RH max.
Moisture Sensitive Level	MSL peak temp. ⁽⁶⁾	Level 2
Notes: Note6: The Moisture Sensitivity Level rating is according to the JEDEC industry standard classifications and peak solder temperature		

The product information and specifications may be subject to changes even without prior written notice. The product has been designed for various applications; its suitability lies in the responsibility of each customer. The product is not authorized for use in safety-critical applications without RECOM's explicit written consent. A safety-critical application is an application where a failure may reasonably be expected to endanger or cause loss of life, inflict bodily harm or damage property. The applicant shall indemnify and hold harmless RECOM, its affiliated companies and its representatives against any damage claims in connection with the unauthorized use of RECOM products in such safety-critical applications.

Looking for pricing, stock, or lifecycle information?

Click below to explore more details on WIN SOURCE:

- [View R1M-123.3S/SMD on WIN SOURCE](#)
- [Recom Power Information](#)

Optimize Your Supply Chain with WIN SOURCE Solutions

- ✓ Global Sourcing Solution
- ✓ Obsolete Management
- ✓ Cost Control Management
- ✓ Shortage Management
- ✓ Alternative Solution
- ✓ Excess Inventory Management