



**THE DATASHEET OF**  
**171-037-113R911**



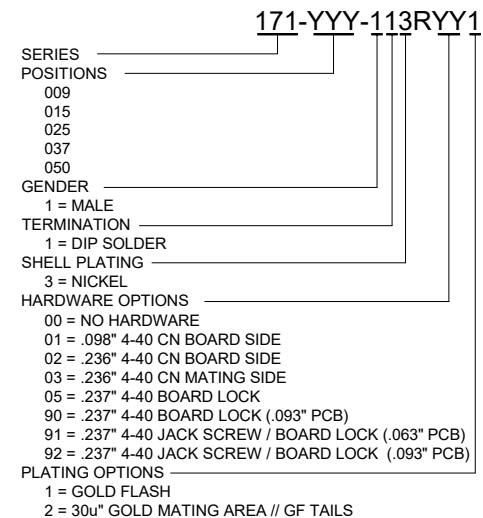
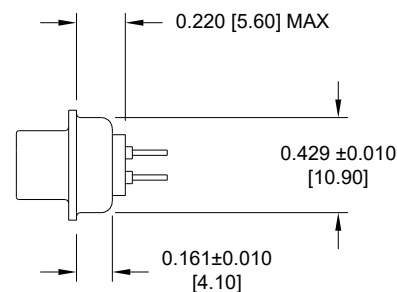
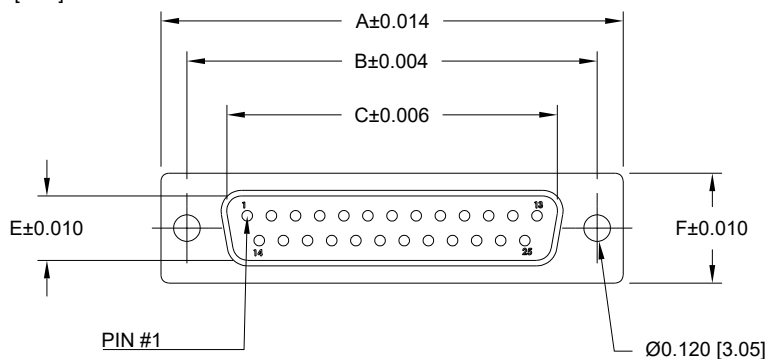
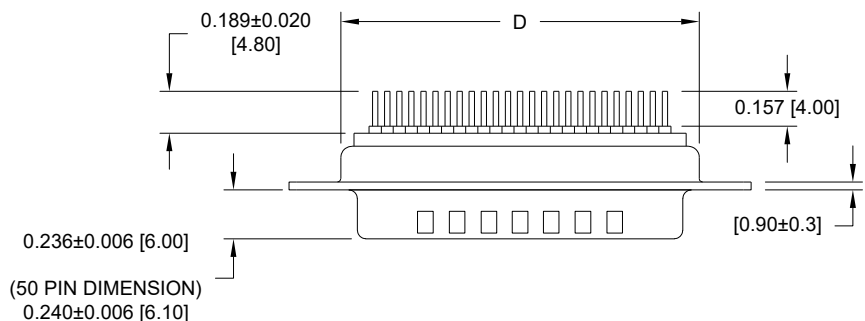
DESCRIPTION: MALE // DIP SOLDER // STAMPED

**SPECIFICATIONS:**

**MATERIALS:**  
 INSULATOR: PA6T, UL94 V-0  
 PROCESS TEMP: 260°C  
 CONTACTS: GOLD PLATED BRASS  
 SHELL: NICKEL PLATED STEEL

**ELECTRICAL:**  
 RATED CURRENT: 5A  
 VOLTAGE: 500VAC FOR 1 MIN.  
 INSULATION RESISTANCE: 1000 MOhms MIN.  
 CONTACT RESISTANCE: 15 mOhms MAX.

**ENVIRONMENT:**  
 OPERATING TEMPERATURE: -55°C TO +125°C



| DIMENSIONS (in/mm) |       |       |       |       |       |       |
|--------------------|-------|-------|-------|-------|-------|-------|
| POS.               | A     | B     | C     | D     | E     | F     |
| 9                  | 1.213 | 0.984 | 0.666 | 0.756 | 0.329 | 0.496 |
|                    | 30.80 | 24.99 | 16.92 | 19.20 | 8.36  | 12.60 |
| 15                 | 1.541 | 1.312 | 0.994 | 1.091 | 0.329 | 0.496 |
|                    | 39.15 | 33.32 | 25.25 | 27.70 | 8.36  | 12.60 |
| 25                 | 2.087 | 1.853 | 1.534 | 1.618 | 0.329 | 0.496 |
|                    | 53.00 | 47.04 | 38.96 | 41.10 | 8.36  | 12.60 |
| 37                 | 2.728 | 2.500 | 2.181 | 2.256 | 0.329 | 0.496 |
|                    | 69.30 | 63.50 | 55.42 | 57.30 | 8.36  | 12.60 |
| 50                 | 2.638 | 2.406 | 2.079 | 2.169 | 0.436 | 0.602 |
|                    | 67.00 | 61.00 | 52.80 | 55.10 | 11.07 | 15.30 |

RoHS COMPLIANT

UNITS = inch [mm]

DO NOT SCALE FROM DRAWING



THESE DRAWINGS AND SPECIFICATIONS ARE THE PROPERTY OF NorComp AND SHALL NOT BE REPRODUCED, COPIED OR USED AS THE BASIS FOR THE MANUFACTURE OR SALE OF APPARATUS WITHOUT WRITTEN PERMISSION.

DRAWN:  
P. JENKINS

DATE:  
09/12/2005

NorComp

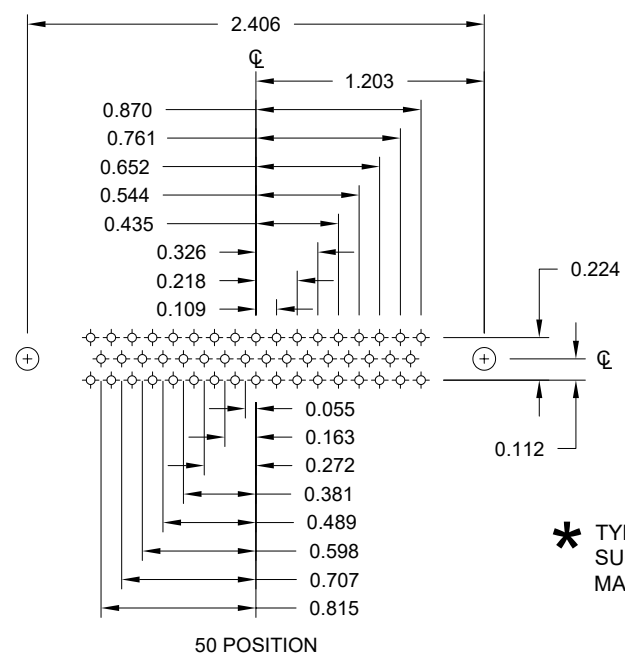
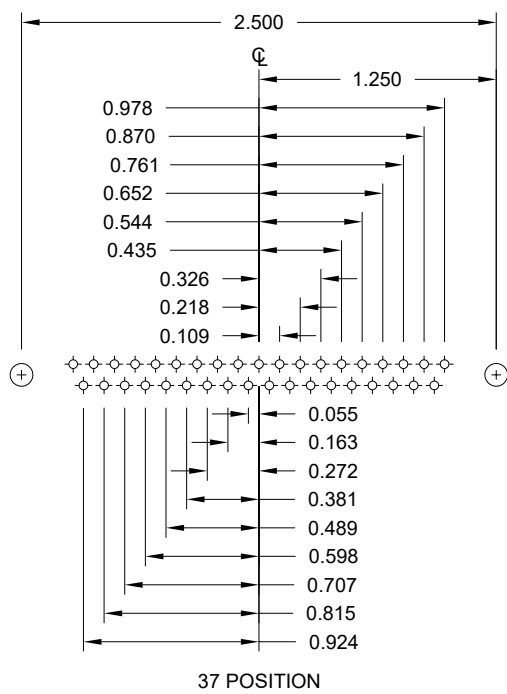
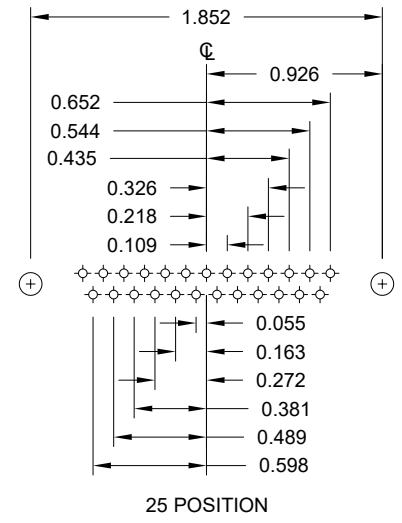
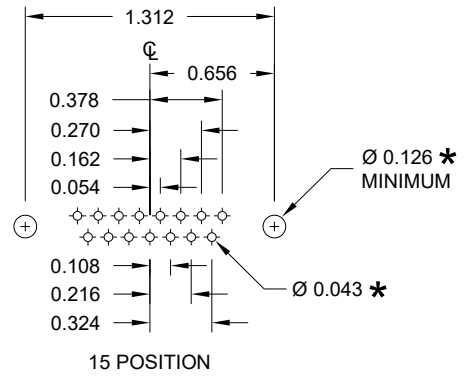
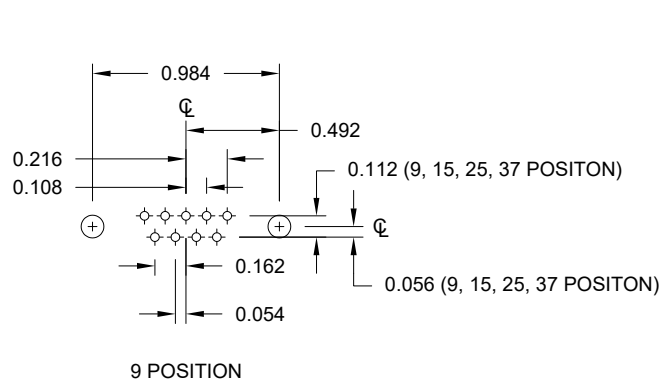
SCALE:  
NTS

SHEET OF  
1 3

REV  
18

DWG NO.

171-YYY-113RYY1



\* TYP. SUGGESTED SIZE MAY NOT BE SUITABLE FOR ALL APPLICATIONS

RoHS COMPLIANT

UNITS = inch

DO NOT SCALE FROM DRAWING



THESE DRAWINGS AND SPECIFICATIONS ARE THE PROPERTY OF NorComp AND SHALL NOT BE REPRODUCED, COPIED OR USED AS THE BASIS FOR THE MANUFACTURE OR SALE OF APPARATUS WITHOUT WRITTEN PERMISSION.

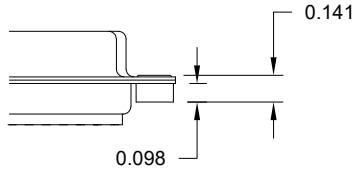
DRAWN: P. JENKINS  
DATE: 09/12/2005

NorComp

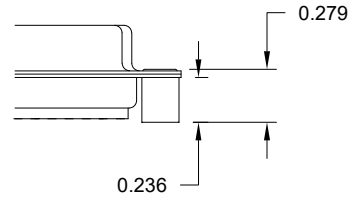
|                         |              |        |
|-------------------------|--------------|--------|
| SCALE: NTS              | SHEET 2 OF 3 | REV 18 |
| DWG NO. 171-YYY-113RYY1 |              |        |

ALL CLINCH-NUTS ARE 4-40 INTERNAL THREADS

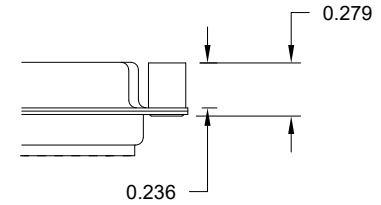
01X ..... 0.098" (BOARD SIDE)



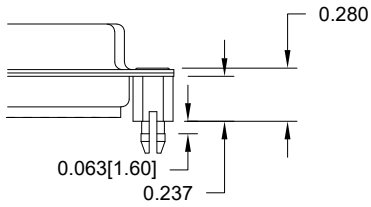
02X ..... 0.236" (BOARD SIDE)



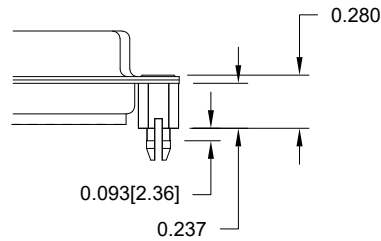
03X..... 0.236" (MATING SIDE)



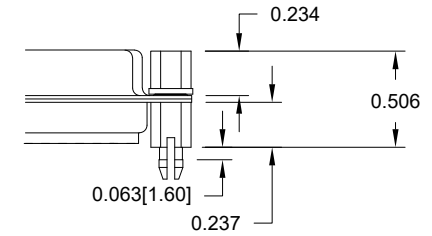
05X ..... 0.237" (BOARD SIDE)



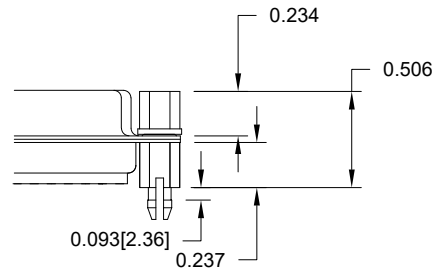
90X ..... 0.237" (BOARD SIDE)



91X ..... 0.237" (BOARD SIDE)



92X ..... 0.237" (BOARD SIDE)



NOTE: 4-40 FEMALE SCREW LOCK IS REMOVABLE

TOLERANCE:  
ALL DIMENSIONS ARE ±0.010

RoHS COMPLIANT

UNITS = inch [mm]

DO NOT SCALE FROM DRAWING



THESE DRAWINGS AND SPECIFICATIONS ARE THE PROPERTY OF NorComp AND SHALL NOT BE REPRODUCED, COPIED OR USED AS THE BASIS FOR THE MANUFACTURE OR SALE OF APPARATUS WITHOUT WRITTEN PERMISSION.

DRAWN:  
P. JENKINS

DATE:  
09/12/2005

NorComp

SCALE:  
NTS

SHEET 3 OF 3

REV 18

DWG NO.

171-YYY-113RYY1

## Looking for pricing, stock, or lifecycle information?

Click below to explore more details on WIN SOURCE:

 [View 171-037-113R911 on WIN SOURCE](#)

 [NorComp Inc. Information](#)

## Optimize Your Supply Chain with WIN SOURCE Solutions

-  Global Sourcing Solution
-  Obsolete Management
-  Cost Control Management
-  Shortage Management
-  Alternative Solution
-  Excess Inventory Management