



# THE DATASHEET OF

# APM6-100-06.5-S-04-2-A-TR

[www.win-source.net](http://www.win-source.net)



0086-755-83957316

DO NOT  
SCALE FROM  
THIS PRINT

DESIGNED & DIMENSIONED  
IN MILLIMETERS [INCHES]

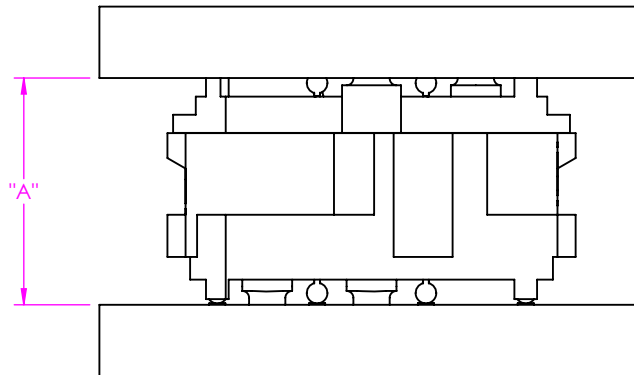


FIGURE 1  
APF6 MATED WITH APM6

TABLE 1				
	APF6 LEAD STYLE		WIPE	
	-03.5			
APM6 LEAD STYLE	"A" FULLY MATED	"A" MAX	FULLY MATED	MIN @ "A" MAX
-01.5	5.00 [.197]	5.53 [.218]	0.91 [.036]	0.38 [.015]
-06.5	10.00 [.394]	10.48 [.413]	0.86 [.034]	0.38 [.015]

- NOTES:  
 1. ALL DIMENSIONS BASED ON NOMINAL VALUES FOR SAMTEC RECOMMENDED PCB LAYOUTS.  
 2. ALTHOUGH MAX DIMENSIONS ARE LISTED SAMTEC RECOMMENDS FULLY MATING COMPONENTS.

PROPRIETARY NOTE  
 THIS DOCUMENT CONTAINS CONFIDENTIAL AND PROPRIETARY INFORMATION AND ALL DESIGN, MANUFACTURING, REPRODUCTION, USE, PATENT RIGHTS AND SALES RIGHTS ARE EXPRESSLY RESERVED BY SAMTEC, INC. THIS DOCUMENT SHALL NOT BE DISCLOSED, IN WHOLE OR PART, TO ANY UNAUTHORIZED PERSON OR ENTITY NOR REPRODUCED, TRANSFERRED OR INCORPORATED IN ANY OTHER PROJECT IN ANY MANNER WITHOUT THE EXPRESS WRITTEN CONSENT OF SAMTEC, INC.



520 PARK EAST BLVD, NEW ALBANY, IN 47150  
 PHONE: 812-944-6733 FAX: 812-948-5047  
 e-Mail info@SAMTEC.com code 55322

## Looking for pricing, stock, or lifecycle information?

Click below to explore more details on WIN SOURCE:

 [View APM6-100-06.5-S-04-2-A-TR on WIN SOURCE](#)

 [Samtec Inc. Information](#)

## Optimize Your Supply Chain with WIN SOURCE Solutions

-  Global Sourcing Solution
-  Obsolete Management
-  Cost Control Management
-  Shortage Management
-  Alternative Solution
-  Excess Inventory Management