



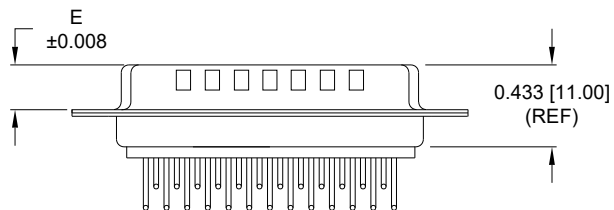
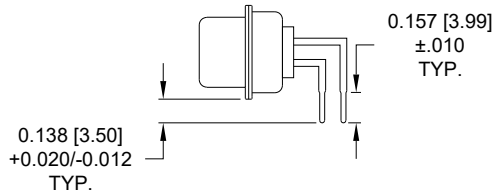
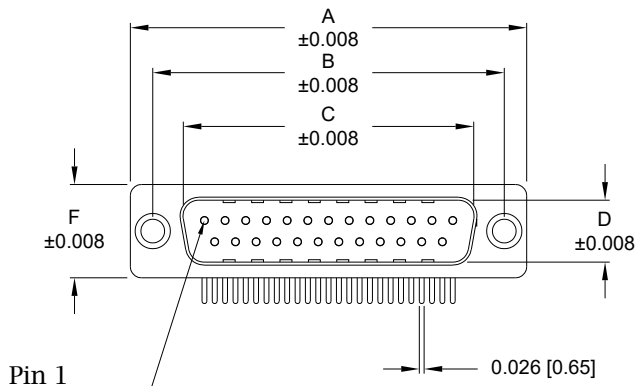
THE DATASHEET OF
774-E09-113R011



Description: 0.370" Right Angle / Machined

Dimensions (inch/mm)

Pins	A	B	C	D	E	F
9	1.213	0.984	0.665	0.327	0.240	0.492
	30.80	25.00	16.90	8.30	6.10	12.50
15	1.543	1.311	0.994	0.327	0.240	0.492
	39.20	33.30	25.25	8.30	6.10	12.50
25	2.089	1.852	1.533	0.327	0.240	0.492
	53.05	47.05	38.95	8.30	6.10	12.50



774 - EYY - 11Y RYY 1

- Series**
- Position**
- E09
- E15
- E25
- Gender**
- 1 = Male
- Termination**
- 1 = PCB Mounting
- Shell Plating**
- 3 = Nickel
- RoHS Compliant**
- Hardware Options**
- 00 = No Hardware
- 01 = 0.098" Clinch Nut (Board Side)
- 14 = Standard Bracket with 4-40 Screwlock
- 24 = Standard Bracket with 4-40 Captive Screw
- 46 = Boardlock Bracket with 4-40 Insert
- Plating Options**
- 1 = Gold Flash
- 2 = 30μ" Gold
- 3 = 50μ" Gold

Meets IP67 Standards

(See page 3 for sealing details)

Material:

- Shell: Nickel Plated Steel
- Insulator: UL 94V-O Rated, White PA6T
- Process Temperature: 260°C
- Contact: Precision Machined Copper Alloy
- Seal: Flexible F08 Adhesive

Electrical:

- Current Rating: 5 AMPS
- Contact Resistance: 10 mOhms Max.
- Insulation Resistance: 5 GOhms Min.
- Working Voltage: 250V
- Temperature: -55° C TO +125° C

RoHS COMPLIANT

UNITS = inch [mm]

DO NOT SCALE FROM DRAWING



THESE DRAWINGS AND SPECIFICATIONS ARE THE PROPERTY OF NorComp AND SHALL NOT BE REPRODUCED, COPIED OR USED AS THE BASIS FOR THE MANUFACTURE OR SALE OF APPARATUS WITHOUT WRITTEN PERMISSION.

DRAWN:
C. Smith

DATE:
03/26/2009

NorComp

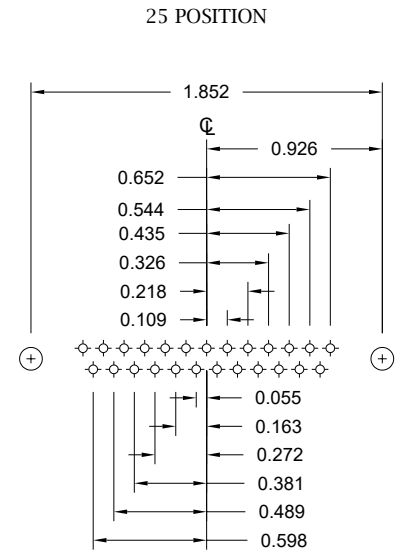
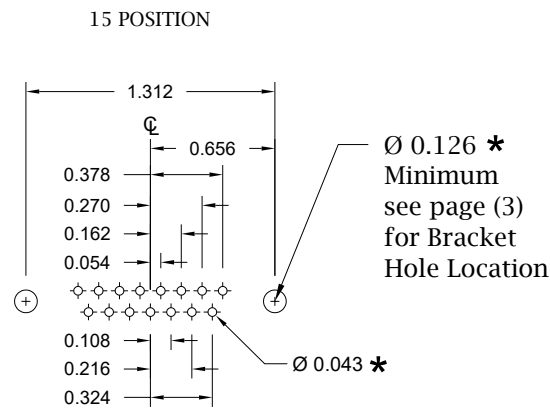
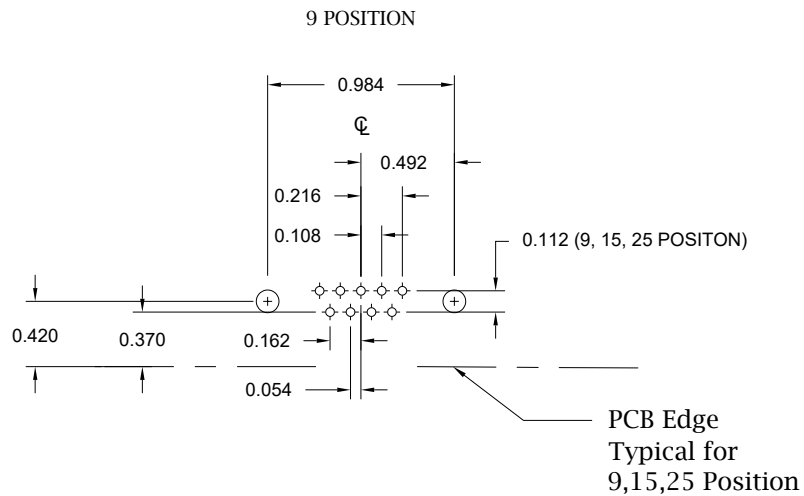
SCALE:
NTS

SHEET OF
1 4

REV
12

DWG NO.

774-EYY-11Y RYY 1



* Typical Suggested Size
 May Not Be Suitable For All Applications

UNITS = inch

DO NOT SCALE FROM DRAWING

RoHS COMPLIANT

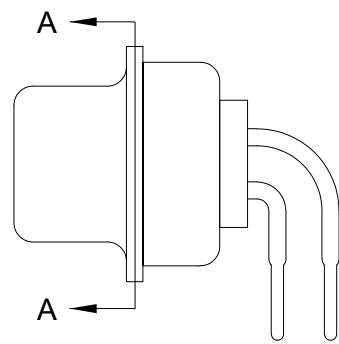


THESE DRAWINGS AND SPECIFICATIONS ARE THE PROPERTY OF NorComp AND SHALL NOT BE REPRODUCED, COPIED OR USED AS THE BASIS FOR THE MANUFACTURE OR SALE OF APPARATUS WITHOUT WRITTEN PERMISSION.

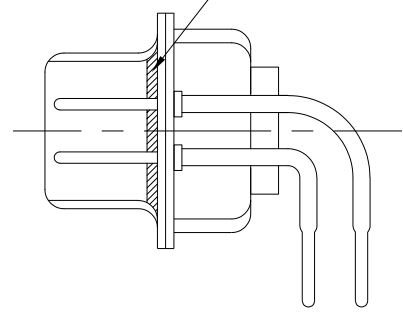
DRAWN:
 C. Smith
 DATE:
 03/26/2009

NorComp

SCALE: NTS	SHEET 2	OF 4	REV 12
DWG NO. 774-EYY-11YRY1			



FRONT SEAL APPLIED OVER INSULATOR
AND BETWEEN FRONT & REAR SHELLS



DETAIL A-A

RoHS COMPLIANT

DO NOT SCALE FROM DRAWING



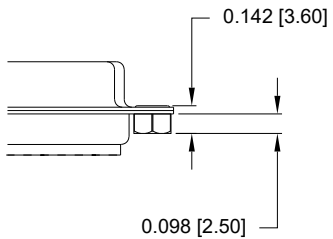
THESE DRAWINGS AND SPECIFICATIONS ARE THE PROPERTY OF NorComp AND SHALL NOT BE REPRODUCED, COPIED OR USED AS THE BASIS FOR THE MANUFACTURE OR SALE OF APPARATUS WITHOUT WRITTEN PERMISSION.

DRAWN:
C. Smith
DATE:
03/26/2009

NorComp

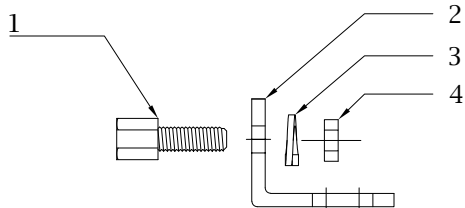
SCALE: NTS	SHEET 3 OF 4	REV 12
DWG NO. 774-EYY-11YRY1		

01 Hardware Option
0.098" Clinch Nut (Board Side)



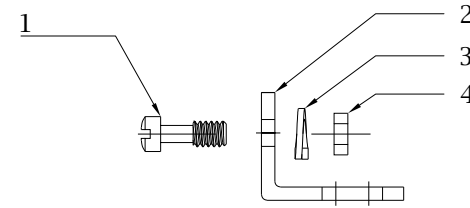
Clinch Nut has 4-40 Internal Threads

14 Hardware Option		
	Description	NorComp Part Number
1	4-40 Screwlock	SFSO4401NR
2	Bracket	K501CZ
3	Lock Washer	LWIT
4	4-40 Nut	N4401N



**Search Hardware Part Number To Obtain Technical Specifications.

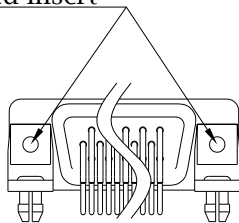
24 Hardware Option		
	Description	NorComp Part Number
1	4-40 Captive Screw	SSH4401T
2	Bracket	K501CZ
3	Lock Washer	LWIT
4	4-40 Nut	N4401N



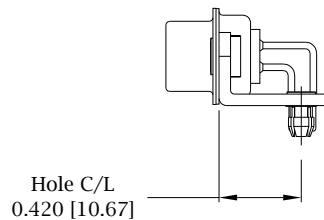
**Search Hardware Part Number To Obtain Technical Specifications.

46 Hardware Option
Boardlock Bracket and 4-40 Insert

#4-40 Threaded Insert



9-25 Position Connector Boardlock Bracket



Boardlock Brackets Come Assembled On Connector

Recommend max torque for all options => 40 in-oz

RoHS COMPLIANT

UNITS = inch [mm]

DO NOT SCALE FROM DRAWING



THESE DRAWINGS AND SPECIFICATIONS ARE THE PROPERTY OF NorComp AND SHALL NOT BE REPRODUCED, COPIED OR USED AS THE BASIS FOR THE MANUFACTURE OR SALE OF APPARATUS WITHOUT WRITTEN PERMISSION.

DRAWN:
C. Smith
DATE:
03/26/2009

NorComp

SCALE: NTS	SHEET 4	OF 4	REV 12
DWG NO.			774-EYY-11YRYY1

Looking for pricing, stock, or lifecycle information?

Click below to explore more details on WIN SOURCE:

 [View 774-E09-113R011 on WIN SOURCE](#)

 [NorComp Inc. Information](#)

Optimize Your Supply Chain with WIN SOURCE Solutions

-  Global Sourcing Solution
-  Obsolete Management
-  Cost Control Management
-  Shortage Management
-  Alternative Solution
-  Excess Inventory Management