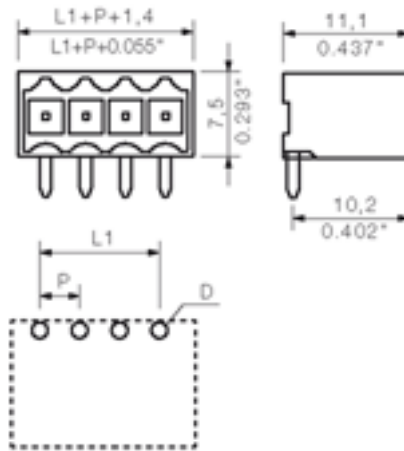
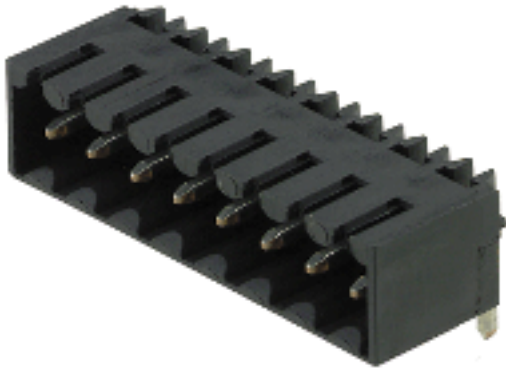




THE DATASHEET OF
1761542001





General ordering data

Order No.	1761542001
Part designation	SL-SMT3.5/2/90G 1.5SN
Version	PCB plug-in connector, Male connectors, Reflow solder connection, Pitch: 3.50 mm, No. of poles: 2, 90°, Box
EAN	4032248132034
Qty.	100 pc(s).

System parameters

Fitted to PCB	Reflow solder connection
Outgoing elbow	90°
Pitch	3.5 mm
Pitch in inch	0.138 inch
No. of poles	2
Solder pin length	1.5 mm
Can be coded	Yes
No. of rows	1
No. of solder pins per pole	1
Dia. of fitting hole	1.4 mm
Fitting hole tolerance	+ 0.1 mm
L1 in mm	3.5 mm
L1 in inch	0.138 inch
Insulation resistance	1 MΩ

System parameters

Electric shock protection to DIN VDE 0470	IP 10
Electric shock protection to DIN VDE 0470	Safe from back-of-hand touch

Material data

Insulating material	LCP GF
Colour	black
colour chart	Similar to RAL 9011
Insulating material group	IIIa
Flammability class UL 94	V-0
CTI	>= 175
Temperature of glow-wire test	960 °C
Duration of glow-wire test	30 S
Contact base material	CuSn
Contact surface	tinned
Constant operating temp., min.	-25 °C
Constant operating temp., max.	100 °C
Storage temperature, min.	-25 °C
Storage temperature, max.	55 °C
Max. relative humidity during storage	80 %

DIN IEC rating data

Rated current, min. No. pins (Tu=20°C)	15 A
Rated current, max. No. pins (Tu=20°C)	12 A
Rated current, min. No. pins (Tu=40°C)	13 A
Rated current, max. No. pins (Tu=40°C)	10 A
Rated voltage for overvoltage class/pollution severity III/3	160 V
Rated impulse withstand voltage for overvoltage class/pollution severity III/3	2.5 kV
Rated voltage for overvoltage class/pollution severity III/2	160 V
Rated impulse withstand voltage for overvoltage class/pollution severity III/2	2.5 kV
Rated voltage for overvoltage class/pollution severity II/2	320 V
Rated impulse withstand voltage for overvoltage class/pollution severity II/2	2.5 kV
Short-time withstand current resistance	3 x 1s with 100 A

CSA rating data

Rated voltage (Use group D)	300 V
Rated current (Use group D)	10 A

UL 1059 rating data

Rated voltage (Use group D)	300 V
Rated current (Use group D)	10 A

Approvals

Approvals institutes



Downloads

CAD Library (P-CAD Format - Standard) SL-SMT.LIB

Classifications

ETIM 2.0	NK
ETIM 3.0	EC001284
eClass 4.1	27-26-07-01
eClass 5.0	27-26-07-01
eClass 5.1	27-26-07-04

Similar products

Order No.	Part designation	Version
1761552001	SL-SMT3.5/3/90G 1.5SN	PCB plug-in connector, Male connectors, Reflow solder connection, Pitch: 3.50 mm, No. of poles: 3, 90°, Box
1841640000	SL-SMT3.5/3/90G 3.2SN SW BOX	PCB plug-in connector, Male connectors, Reflow solder connection, Pitch: 3.50 mm, No. of poles: 3, 90°, Box
1761562001	SL-SMT3.5/4/90G 1.5SN	PCB plug-in connector, Male connectors, Reflow solder connection, Pitch: 3.50 mm, No. of poles: 4, 90°, Box
1841650000	SL-SMT3.5/4/90G 3.2SN SW BOX	PCB plug-in connector, Male connectors, Reflow solder connection, Pitch: 3.50 mm, No. of poles: 4, 90°, Box
1761572001	SL-SMT3.5/5/90G 1.5SN	PCB plug-in connector, Male connectors, Reflow solder connection, Pitch: 3.50 mm, No. of poles: 5, 90°, Box
1841660000	SL-SMT3.5/5/90G 3.2SN SW BOX	PCB plug-in connector, Male connectors, Reflow solder connection, Pitch: 3.50 mm, No. of poles: 5, 90°, Box
1761582001	SL-SMT3.5/6/90G 1.5SN	PCB plug-in connector, Male connectors, Reflow solder connection, Pitch: 3.50 mm, No. of poles: 6, 90°, Box
1841670000	SL-SMT3.5/6/90G 3.2SN SW BOX	PCB plug-in connector, Male connectors, Reflow solder connection, Pitch: 3.50 mm, No. of poles: 6, 90°, Box
1761592001	SL-SMT3.5/7/90G 1.5SN	PCB plug-in connector, Male connectors, Reflow solder connection, Pitch: 3.50 mm, No. of poles: 7, 90°, Box
1841680000	SL-SMT3.5/7/90G 3.2SN SW BOX	PCB plug-in connector, Male connectors, Reflow solder connection, Pitch: 3.50 mm, No. of poles: 7, 90°, Box

1761602001	SL-SMT3.5/8/90G 1.5SN	PCB plug-in connector, Male connectors, Reflow solder connection, Pitch: 3.50 mm, No. of poles: 8, 90°, Box
1841690000	SL-SMT3.5/8/90G 3.2SN SW BOX	PCB plug-in connector, Male connectors, Reflow solder connection, Pitch: 3.50 mm, No. of poles: 8, 90°, Box
1761612001	SL-SMT3.5/9/90G 1.5SN	PCB plug-in connector, Male connectors, Reflow solder connection, Pitch: 3.50 mm, No. of poles: 9, 90°, Box
1841700000	SL-SMT3.5/9/90G 3.2SN SW BOX	PCB plug-in connector, Male connectors, Reflow solder connection, Pitch: 3.50 mm, No. of poles: 9, 90°, Box
1761622001	SL-SMT3.5/10/90G 1.5SN	PCB plug-in connector, Male connectors, Reflow solder connection, Pitch: 3.50 mm, No. of poles: 10, 90°, Box
1841710000	SL-SMT3.5/10/90G 3.2SN SW BOX	PCB plug-in connector, Male connectors, Reflow solder connection, Pitch: 3.50 mm, No. of poles: 10, 90°, Box
1761632001	SL-SMT3.5/11/90G 1.5SN	PCB plug-in connector, Male connectors, Reflow solder connection, Pitch: 3.50 mm, No. of poles: 11, 90°, Box
1841720000	SL-SMT3.5/11/90G 3.2SN SW BOX	PCB plug-in connector, Male connectors, Reflow solder connection, Pitch: 3.50 mm, No. of poles: 11, 90°, Box
1761642001	SL-SMT3.5/12/90G 1.5SN	PCB plug-in connector, Male connectors, Reflow solder connection, Pitch: 3.50 mm, No. of poles: 12, 90°, Box
1841730000	SL-SMT3.5/12/90G 3.2SN SW BOX	PCB plug-in connector, Male connectors, Reflow solder connection, Pitch: 3.50 mm, No. of poles: 12, 90°, Box
1761652001	SL-SMT3.5/13/90G 1.5SN	PCB plug-in connector, Male connectors, Reflow solder connection, Pitch: 3.50 mm, No. of poles: 13, 90°, Box
1841740000	SL-SMT3.5/13/90G 3.2SN SW BOX	PCB plug-in connector, Male connectors, Reflow solder connection, Pitch: 3.50 mm, No. of poles: 13, 90°, Box
1761662001	SL-SMT3.5/14/90G 1.5SN	PCB plug-in connector, Male connectors, Reflow solder connection, Pitch: 3.50 mm, No. of poles: 14, 90°, Box
1841750000	SL-SMT3.5/14/90G 3.2SN SW BOX	PCB plug-in connector, Male connectors, Reflow solder connection, Pitch: 3.50 mm, No. of poles: 14, 90°, Box
1761672001	SL-SMT3.5/15/90G 1.5SN	PCB plug-in connector, Male connectors, Reflow solder connection, Pitch: 3.50 mm, No. of poles: 15, 90°, Box
1841760000	SL-SMT3.5/15/90G 3.2SN SW BOX	PCB plug-in connector, Male connectors, Reflow solder connection, Pitch: 3.50 mm, No. of poles: 15, 90°, Box
1761682001	SL-SMT3.5/16/90G 1.5SN	PCB plug-in connector, Male connectors, Reflow solder connection, Pitch: 3.50 mm, No. of poles: 16, 90°, Box
1841770000	SL-SMT3.5/16/90G 3.2SN SW BOX	PCB plug-in connector, Male connectors, Reflow solder connection, Pitch: 3.50 mm, No. of poles: 16, 90°, Box
1761692001	SL-SMT3.5/17/90G 1.5SN	PCB plug-in connector, Male connectors, Reflow solder connection, Pitch: 3.50 mm, No. of poles: 17, 90°, Box
1841780000	SL-SMT3.5/17/90G 3.2SN SW BOX	PCB plug-in connector, Male connectors, Reflow solder connection, Pitch: 3.50 mm, No. of poles: 17, 90°, Box
1761702001	SL-SMT3.5/18/90G 1.5SN	PCB plug-in connector, Male connectors, Reflow solder connection, Pitch: 3.50 mm, No. of poles: 18, 90°, Box
1841790000	SL-SMT3.5/18/90G 3.2SN SW BOX	PCB plug-in connector, Male connectors, Reflow solder connection, Pitch: 3.50 mm, No. of poles: 18, 90°, Box
1761712001	SL-SMT3.5/19/90G 1.5SN	PCB plug-in connector, Male connectors, Reflow solder connection, Pitch: 3.50 mm, No. of poles: 19, 90°, Box
1841800000	SL-SMT3.5/19/90G 3.2SN SW BOX	PCB plug-in connector, Male connectors, Reflow solder connection, Pitch: 3.50 mm, No. of poles: 19, 90°, Box
1841630000	SL-SMT3.5/2/90G 3.2SN SW BOX	PCB plug-in connector, Male connectors, Reflow solder connection, Pitch: 3.50 mm, No. of poles: 2, 90°, Box
1761722001	SL-SMT3.5/20/90G 1.5SN	PCB plug-in connector, Male connectors, Reflow solder connection, Pitch: 3.50 mm, No. of poles: 20, 90°, Box

1841810000	SL-SMT3.5/20/90G 3.2SN SW BOX	PCB plug-in connector, Male connectors, Reflow solder connection, Pitch: 3.50 mm, No. of poles: 20, 90°, Box
1761732001	SL-SMT3.5/21/90G 1.5SN	PCB plug-in connector, Male connectors, Reflow solder connection, Pitch: 3.50 mm, No. of poles: 21, 90°, Box
1841820000	SL-SMT3.5/21/90G 3.2SN SW BOX	PCB plug-in connector, Male connectors, Reflow solder connection, Pitch: 3.50 mm, No. of poles: 21, 90°, Box
1761742001	SL-SMT3.5/22/90G 1.5SN	PCB plug-in connector, Male connectors, Reflow solder connection, Pitch: 3.50 mm, No. of poles: 22, 90°, Box
1841830000	SL-SMT3.5/22/90G 3.2SN SW BOX	PCB plug-in connector, Male connectors, Reflow solder connection, Pitch: 3.50 mm, No. of poles: 22, 90°, Box
1761752001	SL-SMT3.5/23/90G 1.5SN	PCB plug-in connector, Male connectors, Reflow solder connection, Pitch: 3.50 mm, No. of poles: 23, 90°, Box
1841840000	SL-SMT3.5/23/90G 3.2SN SW BOX	PCB plug-in connector, Male connectors, Reflow solder connection, Pitch: 3.50 mm, No. of poles: 23, 90°, Box
1761762001	SL-SMT3.5/24/90G 1.5SN	PCB plug-in connector, Male connectors, Reflow solder connection, Pitch: 3.50 mm, No. of poles: 24, 90°, Box
1841850000	SL-SMT3.5/24/90G 3.2SN SW BOX	PCB plug-in connector, Male connectors, Reflow solder connection, Pitch: 3.50 mm, No. of poles: 24, 90°, Box

Looking for pricing, stock, or lifecycle information?

Click below to explore more details on WIN SOURCE:

 [View 1761542001 on WIN SOURCE](#)

 [Weidmuller Information](#)

Optimize Your Supply Chain with WIN SOURCE Solutions

-  Global Sourcing Solution
-  Obsolete Management
-  Cost Control Management
-  Shortage Management
-  Alternative Solution
-  Excess Inventory Management