



**THE DATASHEET OF**  
**172-E09-213R021**



SPECIFICATIONS:

**MATERIALS:**

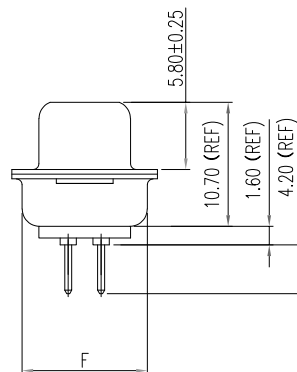
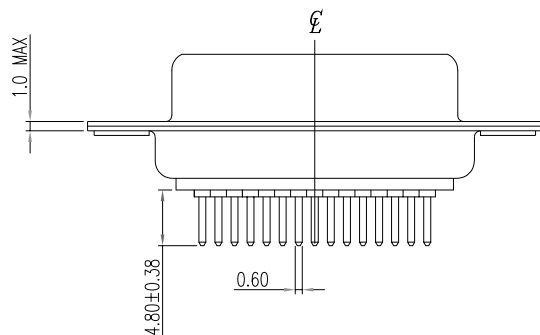
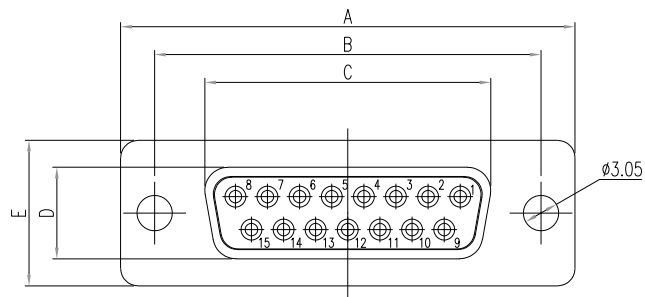
INSULATOR: GLASS-FILLED NYLON THERMOPLASTIC, UL94 V-0  
 PROCESS TEMP: 260°C  
 CONTACTS: GOLD PLATED BRASS  
 SHELL: NICKEL PLATED STEEL

**ELECTRICAL:**

RATED CURRENT: 5A  
 WORKING VOLTAGE: 250VAC  
 INSULATION RESISTANCE: 1000 MOhms MIN.  
 CONTACT RESISTANCE: 15 mOhms MAX.

**ENVIRONMENT:**

OPERATING TEMPERATURE: -55°C TO +125°C



DIMENSIONS(mm)						
SIZE	A <sup>+0.39</sup> <sub>-0.39</sub>	B <sup>+0.25</sup> <sub>-0.25</sub>	C <sup>+0.25</sup> <sub>-0.25</sub>	D <sup>+0.25</sup> <sub>-0.34</sub>	E <sup>+0.38</sup> <sub>-0.38</sub>	F <sup>+0.25</sup> <sub>-0.25</sub>
9	30.81	24.99	16.33	7.90	12.55	10.80
15	39.19	33.32	24.66	7.90	12.55	10.80
25	53.04	47.04	38.38	7.90	12.55	10.80
37	69.32	63.50	54.84	7.90	12.55	10.80
50	67.00	61.10	52.20	10.90	15.40	13.30

**172-EYY-21YRYY1**

- SERIES \_\_\_\_\_
- POSITIONS \_\_\_\_\_
- 09 \_\_\_\_\_
- 15 \_\_\_\_\_
- 25 \_\_\_\_\_
- 37 \_\_\_\_\_
- 50 \_\_\_\_\_
- GENDER \_\_\_\_\_
- 2 = FEMALE
- TERMINATION \_\_\_\_\_
- 1 = DIP SOLDER
- SHELL PLATING \_\_\_\_\_
- 2 = TIN
- 3 = NICKEL
- HARDWARE OPTIONS \_\_\_\_\_
- 00 = NO HARDWARE
- 01 = .098" CLINCH NUT (BOARD SIDE)
- 02 = .236" CLINCH NUT (BOARD SIDE)
- 03 = .236" CLINCH NUT (MOUNTING SIDE)
- 05 = .237" 4-40 BOARD LOCK
- 08 = .228" 4-40 BOARD LOCK
- 90 = .237" 4-40 BOARD LOCK (FOR 0.093" BOARD MAX.)
- 91 = .237" 4-40 SPACER/ BOARD LOCK
- 92 = .237" 4-40 SPACER/ BOARD LOCK (FOR 0.093" BOARD MAX.)
- PLATING OPTIONS \_\_\_\_\_
- 1 = GOLD FLASH
- 2 = 30 MICRO-INCH GOLD
- 3 = 50 MICRO-INCH GOLD
- 5 = 15 MICRO-INCH GOLD

RoHS COMPLIANT

UNITS = mm

DO NOT SCALE FROM DRAWING



THESE DRAWINGS AND SPECIFICATIONS ARE THE PROPERTY OF NorComp AND SHALL NOT BE REPRODUCED, COPIED OR USED AS THE BASIS FOR THE MANUFACTURE OR SALE OF APPARATUS WITHOUT WRITTEN PERMISSION.

DRAWN:  
P. JENKINS

DATE:  
11/28/2005

NorComp

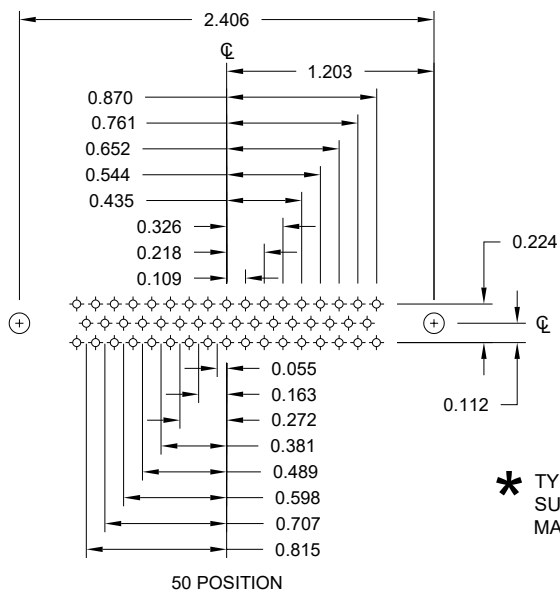
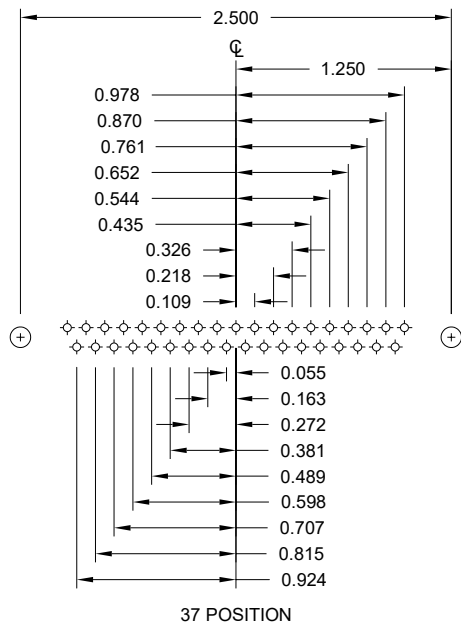
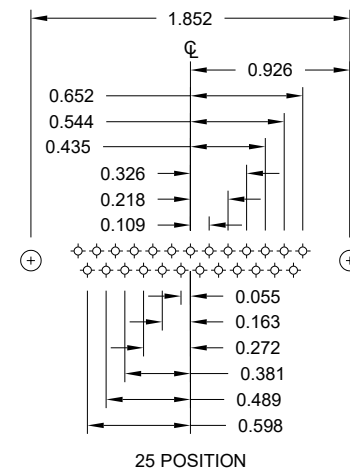
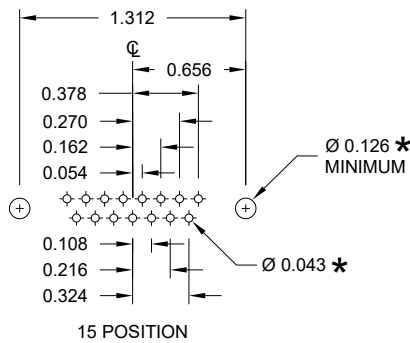
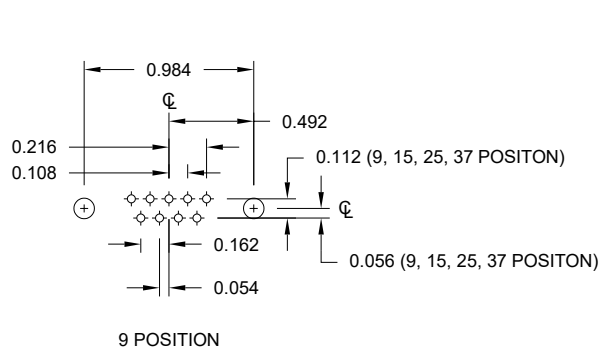
SCALE:  
NTS

SHEET OF  
1 3

REV  
23

DWG NO.

172-EYY-21YRYY1



\* TYP.  
SUGGESTED SIZE  
MAY NOT BE SUITABLE FOR ALL APPLICATIONS

RoHS COMPLIANT

UNITS = inch

DO NOT SCALE FROM DRAWING



THESE DRAWINGS AND SPECIFICATIONS ARE THE PROPERTY OF NorComp AND SHALL NOT BE REPRODUCED, COPIED OR USED AS THE BASIS FOR THE MANUFACTURE OR SALE OF APPARATUS WITHOUT WRITTEN PERMISSION.

DRAWN:  
P. JENKINS

DATE:  
11/28/2005

NorComp

SCALE:  
NTS

SHEET OF  
2 3

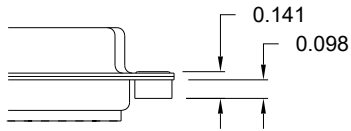
REV  
23

DWG NO.

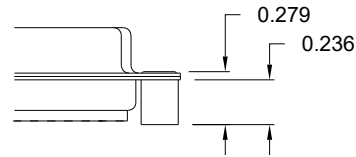
172-EYY-21YRY1

ALL CLINCH-NUTS ARE 4-40 INTERNAL THREADS

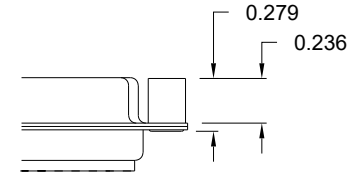
01 ..... 0.098" (BOARD SIDE)



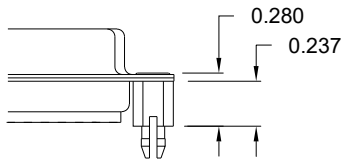
02 ..... 0.236" (BOARD SIDE)



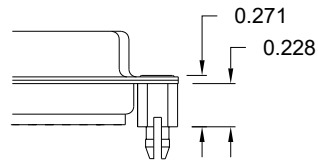
03 ..... 0.236" (MATING SIDE)



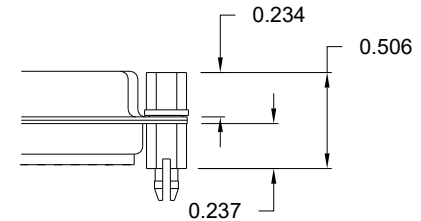
05 ..... 0.237" (BOARD SIDE)



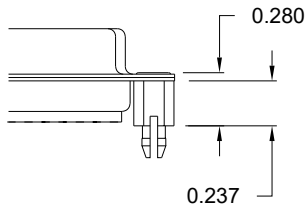
08 ..... 0.228" (BOARD SIDE)



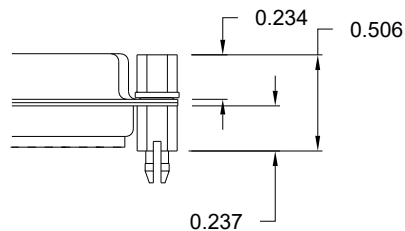
91 ..... 0.237" BOARD SIDE



90 ..... 0.237" (BOARD SIDE)



92 ..... 0.237" BOARD SIDE



NOTE 1: 4-40 FEMALE SCREW LOCKS ARE REMOVABLE  
 NOTE 2: 90 & 92 OPTIONS DESIGNED FOR 0.093" PCB THICKNESS  
 NOTE 3: 05, 08, & 91 OPTIONS DESIGNED FOR 0.063" PCB THICKNESS

**TOLERANCE:**  
 ALL DIMENSIONS ARE  $\pm 0.010$

RoHS COMPLIANT

UNITS = inch

DO NOT SCALE FROM DRAWING



THESE DRAWINGS AND SPECIFICATIONS ARE THE PROPERTY OF NorComp AND SHALL NOT BE REPRODUCED, COPIED OR USED AS THE BASIS FOR THE MANUFACTURE OR SALE OF APPARATUS WITHOUT WRITTEN PERMISSION.

DRAWN:  
 P. JENKINS

DATE:  
 11/28/2005

NorComp

SCALE:  
 NTS

SHEET 3 OF 3

REV 23

DWG NO.

172-EYY-21YRY1

## Looking for pricing, stock, or lifecycle information?

Click below to explore more details on WIN SOURCE:

 [View 172-E09-213R021 on WIN SOURCE](#)

 [NorComp Inc. Information](#)

## Optimize Your Supply Chain with WIN SOURCE Solutions

-  Global Sourcing Solution
-  Obsolete Management
-  Cost Control Management
-  Shortage Management
-  Alternative Solution
-  Excess Inventory Management