



**THE DATASHEET OF**  
**09380062611**



## Han K 4/0 Pin Male Insert

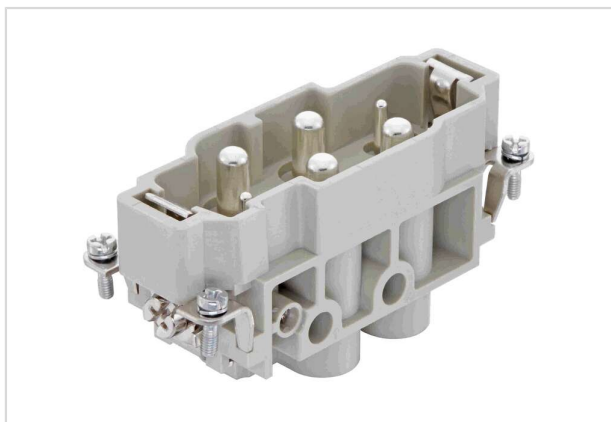


Image is for illustration purposes only. Please refer to product description.

Part number	09 38 006 2611
Specification	Han K 4/0 Pin Male Insert
HARTING eCatalogue	<a href="https://b2b.harting.com/09380062611">https://b2b.harting.com/09380062611</a>

### Identification

Category	Inserts
Series	Han-Com®
Identification	Han® K 4/0

### Version

Termination method	Screw termination
Gender	Male
Size	16 B
Number of contacts	4
PE contact	Yes

### Technical characteristics

Conductor cross-section	1.5 ... 16 mm <sup>2</sup>
Rated current	80 A
Rated voltage	830 V
Rated impulse voltage	8 kV
Pollution degree	3
Rated current acc. to UL	80 A
Rated voltage acc. to UL	600 V
Rated current acc. to CSA	80 A
Rated voltage acc. to CSA	300 V
Insulation resistance	>10 <sup>10</sup> Ω
Contact resistance	≤0.3 mΩ



Pushing Performance  
 Since 1945

## Technical characteristics

Stripping length	14 mm
Tightening torque	1.2 Nm @ 1.5 mm <sup>2</sup>
	2 Nm @ 2.5 mm <sup>2</sup>
	3 Nm @ 4 mm <sup>2</sup>
	3 Nm @ 6 mm <sup>2</sup>
	3 Nm @ 10 mm <sup>2</sup>
	3 Nm @ 16 mm <sup>2</sup>
Limiting temperature	-40 ... +125 °C
Mating cycles	≥500

## Material properties

Material (insert)	Polycarbonate (PC)
Colour (insert)	RAL 7032 (pebble grey)
Material (contacts)	Copper alloy
Surface (contacts)	Silver plated
Material flammability class acc. to UL 94	V-0
RoHS	compliant with exemption
RoHS exemptions	6(c): Copper alloy containing up to 4 % lead by weight
ELV status	compliant with exemption
China RoHS	50
REACH Annex XVII substances	Not contained
REACH ANNEX XIV substances	Not contained
REACH SVHC substances	Yes
REACH SVHC substances	Lead
ECHA SCIP number	5dbb3851-b94e-4e88-97a1-571845975242
California Proposition 65 substances	Yes
California Proposition 65 substances	Lead Nickel
Fire protection on railway vehicles	EN 45545-2 (2020-08)
Requirement set with Hazard Levels	R22 (HL 1-3)
	R23 (HL 1-3)

## Specifications and approvals

Specifications	IEC 60664-1
	IEC 61984
UL / CSA	UL 1977 ECBT2.E235076
	CSA-C22.2 No. 182.3 ECBT8.E235076



**Pushing Performance**  
Since 1945

## Specifications and approvals

Approvals	DNV GL
-----------	--------

## Commercial data

Packaging size	1
Net weight	75 g
Country of origin	Romania
European customs tariff number	85366990
GTIN	5713140056237
ETIM	EC000438
eCl@ss	27440205 Contact insert for industrial connectors

## Looking for pricing, stock, or lifecycle information?

Click below to explore more details on WIN SOURCE:

- ⊖ [View 09380062611](#) on WIN SOURCE
- ⊖ [HARTING](#) Information

## Optimize Your Supply Chain with WIN SOURCE Solutions

- ✓ Global Sourcing Solution
- ✓ Obsolete Management
- ✓ Cost Control Management
- ✓ Shortage Management
- ✓ Alternative Solution
- ✓ Excess Inventory Management