



**THE DATASHEET OF
FP11SPA1B1TP02**



FP Series Sealed Ultra Miniature Pushbutton Switches



A

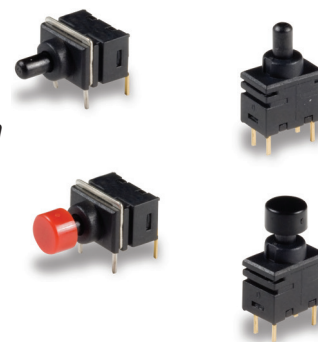
Pushbutton

Features/Benefits

- Ultra-miniature pushbutton
- Multiple poles and throws
- Long life 100,000 cycles
- Vertical and right angle mount
- Sealed against soldering and cleaning processes
- Optional caps
- RoHS compliant

Typical Applications

- Networking equipment
- High-end consumer
- Professional instrumentation
- Computer, Server, Modem & Data storage



Specifications

CONTACT RATING: Max. 0.4 VA (28 V DC or V AC)
 ELECTRICAL LIFE: 50,000 cycles (FP11 & FP21)
 10,000 cycles (FP12 & FP22)
 CONTACT RESISTANCE: (10mA @ 2 V DC) 80 mΩ max. initial
 INSULATION RESISTANCE: 500MΩ min. @ 500 V DC - 1 minute
 OPERATING TEMPERATURE: -20°C to 80°C
 SOLDERABILITY: Per MIL-STD-202F method 208D, or
 EIA RS-186E method 9
 PACKAGING:
 Tray pack - 25 pcs per tray (A1 type terminal)
 - 100 pcs per tray (C1 type terminal)
 Caps (optional) - Bulk bag; 100 caps per bag.

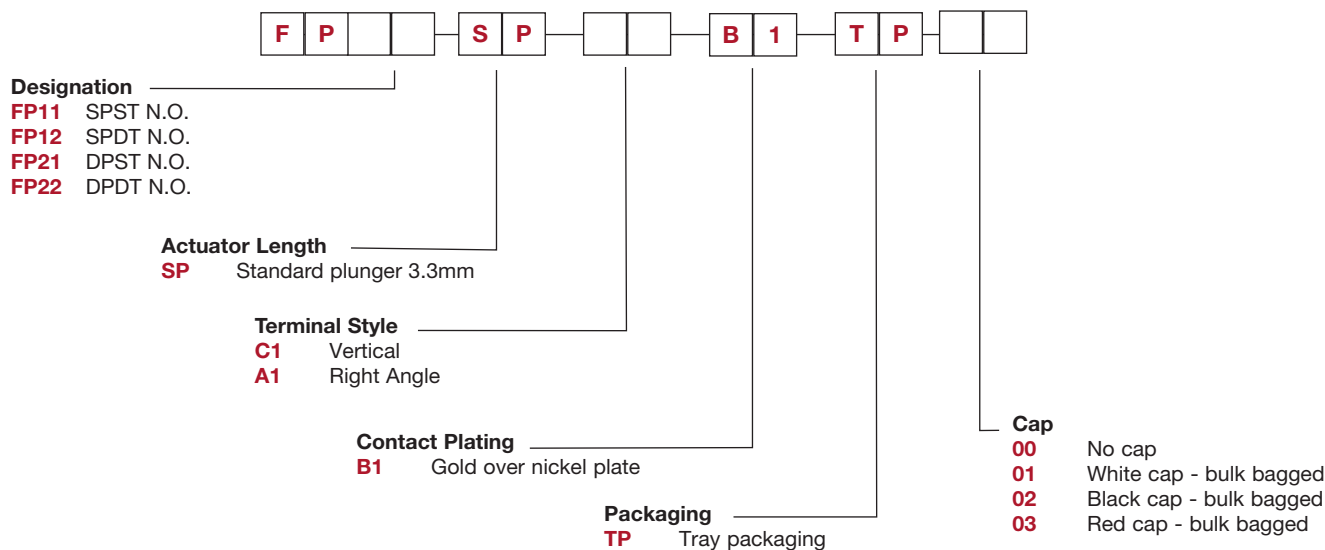
Materials

MOVABLE CONTACTS:
 Base metal: Phosphor bronze
 Plating: Gold over nickel plate
 FIXED CONTACTS:
 Base metal: Brass
 Plating: Gold over nickel plate
 COVER: PA66 - Black
 ACTUATOR: PPS - Black
 BASE: PPS - Black
 SUPPORT BRACKET: Steel with tin plate
 (A1 type terminal only)

NOTE: Specifications and materials listed above are for switches with standard options.
 For information on specific and custom switches, consult Customer Service Center.

Build-A-Switch

To order, simply select desired option from each category and place in the appropriate box. Available options are shown and described on pages A-106 thru A-107. For additional options not shown in catalog, consult Customer Service Center.





FP Series Sealed Ultra Miniature Pushbutton Switches

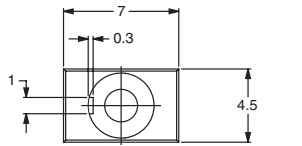
Pushbutton
A

SWITCH CIRCUIT

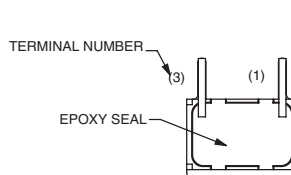
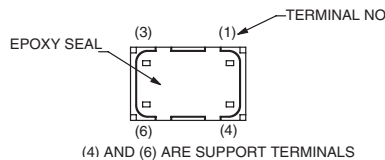
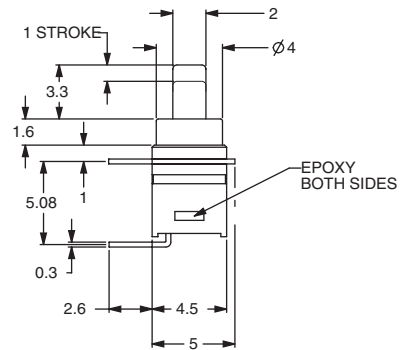
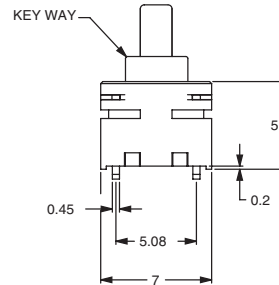
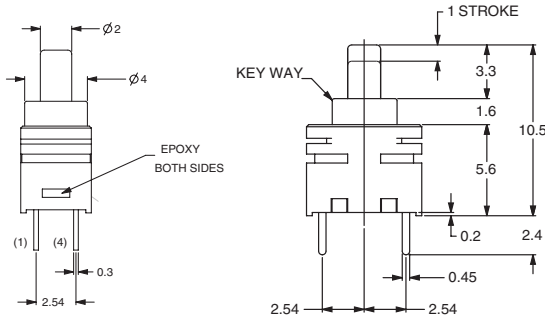
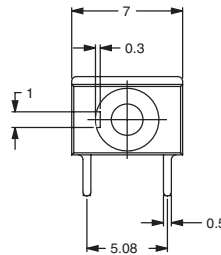
CIRCUIT	MODEL NO.	SWITCH FUNCTION		SCHEMATIC
		POS. 1	POS. 2	
SPST	FP11		MOM	
		CONNECTED TERMINALS		
		OPEN	1-3	
SPDT	FP12	ON	MOM	
		CONNECTED TERMINALS		
		2-3	2-1	
DPST	FP21	OFF	MOM	
		CONNECTED TERMINALS		
		OPEN	1-3,4-6	
DPDT	FP22	ON	MOM	
		CONNECTED TERMINALS		
		2-3,5-6	2-1,5-4	

TERMINAL STYLE

C1 VERTICAL



A1 RIGHT ANGLE



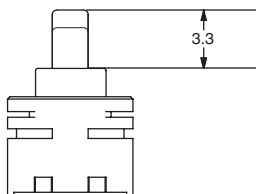
13 Mar 20

Dimensions are shown: mm
Specifications and dimensions subject to change

FP Series Sealed Ultra Miniature Pushbutton Switches

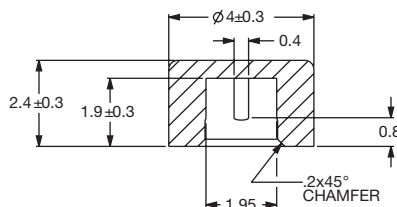
ACTUATOR LENGTH

SP STANDARD PLUNGER 3.3MM



CAPS

OPTION CODE	DESCRIPTION
00	NO CAP
01	WHITE CAP, BULK BAGGED
02	BLACK CAP, BULK BAGGED
03	RED CAP, BULK BAGGED



To purchase Caps separately without switch, please use these part numbers

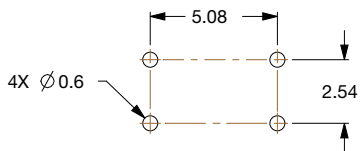
PART #	COLOR
798D01000	WHITE
798D02000	BLACK
798D03000	RED

MOUNTING HOLE

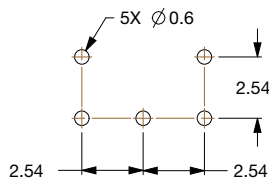
C1 VERTICAL



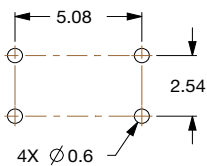
FP11



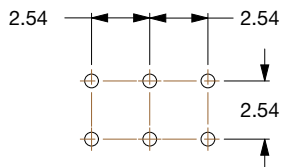
FP12



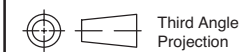
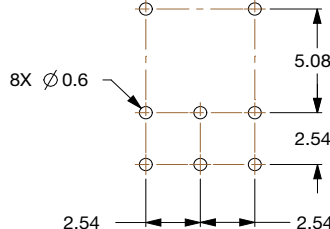
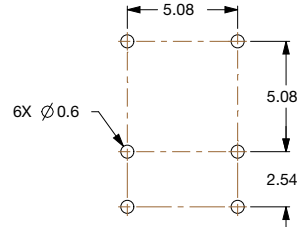
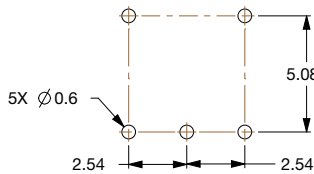
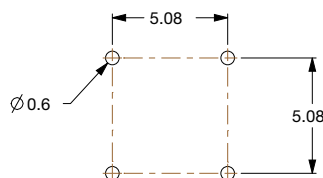
FP21



FP22



A1 RIGHT ANGLE



Dimensions are shown: mm
Specifications and dimensions subject to change

Looking for pricing, stock, or lifecycle information?

Click below to explore more details on WIN SOURCE:

- ⊖ [View FP11SPA1B1TP02 on WIN SOURCE](#)
- ⊖ [C&K Components Information](#)

Optimize Your Supply Chain with WIN SOURCE Solutions

- ✓ Global Sourcing Solution
- ✓ Obsolete Management
- ✓ Cost Control Management
- ✓ Shortage Management
- ✓ Alternative Solution
- ✓ Excess Inventory Management