



**THE DATASHEET OF  
CY8CPROTO-063-BLE**





**Please note that Cypress is an Infineon Technologies Company.**

The document following this cover page is marked as “Cypress” document as this is the company that originally developed the product. Please note that Infineon will continue to offer the product to new and existing customers as part of the Infineon product portfolio.

**Continuity of document content**

The fact that Infineon offers the following product as part of the Infineon product portfolio does not lead to any changes to this document. Future revisions will occur when appropriate, and any changes will be set out on the document history page.

**Continuity of ordering part numbers**

Infineon continues to support existing part numbers. Please continue to use the ordering part numbers listed in the datasheet for ordering.

## Objective

This code example demonstrates the Find Me Profile application workflow with PSoC® 6 MCU with BLE Connectivity (PSoC 6 BLE).

## Overview

This code example demonstrates the Find Me Profile operation of the BLE Component. The Find Me Target uses the Find Me Profile with one instance of the Immediate Alert Service to display the alerts if the Client has configured the device for alerting. The Find Me Target operates with other devices that implement the Find Me Profile. The device switches to Deep Sleep mode between BLE connection intervals.

## Requirements

**Tool:** PSoC® Creator™ 4.2, PDL 3.0.4, PSoC Programmer™ 3.27.3, CySmart™ 1.3

**Programming Language:** C (Arm® GCC 5.4-2016-q2-update)

**Associated Parts:** All PSoC 6 MCU with BLE Connectivity (PSoC 6 BLE) parts

**Related Hardware:** CY8CKIT-062-BLE PSoC 6 BLE Pioneer Kit and CY8CPROTO-063-BLE PSoC 6 BLE Prototyping Kit

## Hardware Setup

This example uses the kit's default configuration. Refer to the kit guide to ensure that the kit is configured correctly.

1. Connect the BLE Pioneer Kit or the CY8CPROTO-063 board to the computer's USB port.
2. Connect the BLE Dongle to one of the USB ports on the computer. (Optional, not included with CY8CPROTO-063 kit.)

## LED Behavior

The Advertising LED (green) blinks to indicate that the device is advertising. The Alert LED (red) may be OFF, steady ON, or blinking depending on the alert status. The Disconnect LED (blue) is ON when the device is not connected to a peer device and not advertising. When the device is in Hibernate mode, the Disconnect LED stays ON. The CY8CPROTO-063-BLE kit does not have a blue LED, so the disconnected status is not demonstrated on this kit.

If the  $V_{DD}$  voltage is set to less than 2.7 V in the DWR settings **System** tab, only the Alert LED (red) is used. The other two LEDs will remain OFF.

## Software Setup

### BLE Host Emulation Tool

This example requires a BLE tool that can connect to the development board. Cypress provides two solutions: the CySmart mobile app for iOS or Android mobile devices and the CySmart Host Emulation Tool PC application for Windows. You can evaluate the behavior with any of the two options, but the CySmart mobile app is simpler. Scan one of the following QR codes from your mobile phone to download the CySmart app. You can also use any other BLE app that supports the Find Me profile or that can read/write GATT attributes.

iOS



Android



## Operation

You can connect to the Find Me Target device with a BLE 4.0 or BLE 4.1-compatible device configured in the GAP Central role and is capable of discovering the Immediate Alert service and Alert Level Characteristic.

To connect to the Find Me Target device, send a connection request to the device when the device is advertising. The Advertising LED (green) blinks while the device is advertising. If the Client is connected to the Find Me Target, the Alert Level Characteristic can be written to the trigger alerts on a remote device. If the Alert Level is set to CY\_BLE\_MILD\_ALERT, the Alert LED (red) starts blinking. If the Alert Level is set to CY\_BLE\_HIGH\_ALERT, the Alert LED is turned ON.

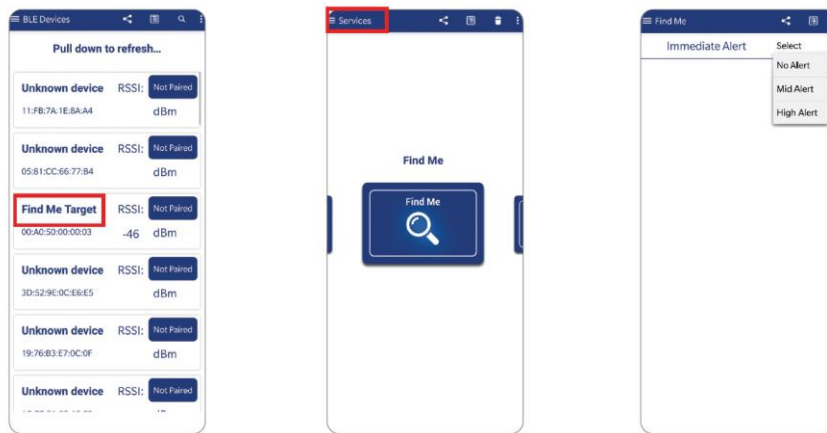
To clear the alerts, send a request from the Client to set the Alert Level Characteristic to CY\_BLE\_NO\_ALERT. The alerts are also cleared when the connection with the Client is canceled or lost.

## Operation Steps

1. Connect the CY8CKIT-062-BLE kit board or CY8CPROTO-063-BLE PSoC 6 Prototyping Kit Board into your computer's USB port.
2. If you are using the CY8CKIT-062-BLE kit, you can skip this step. If using the CY8CPROTO-063-BLE PSoC 6 Prototyping Kit Board, you will need to change the device selection as documented in [Table 1](#). Also, pin assignments for the LEDs will need to be changed for proper LED operation. See [Table 2](#) for LED pin assignments.
3. Build the project and program it into the PSoC 6 BLE device. Choose **Debug > Program**. For more information on device programming, see PSoC Creator Help. Flash for both CPUs is programmed in a single program operation.
4. Observe the green LED blinks while the device is advertising.
 

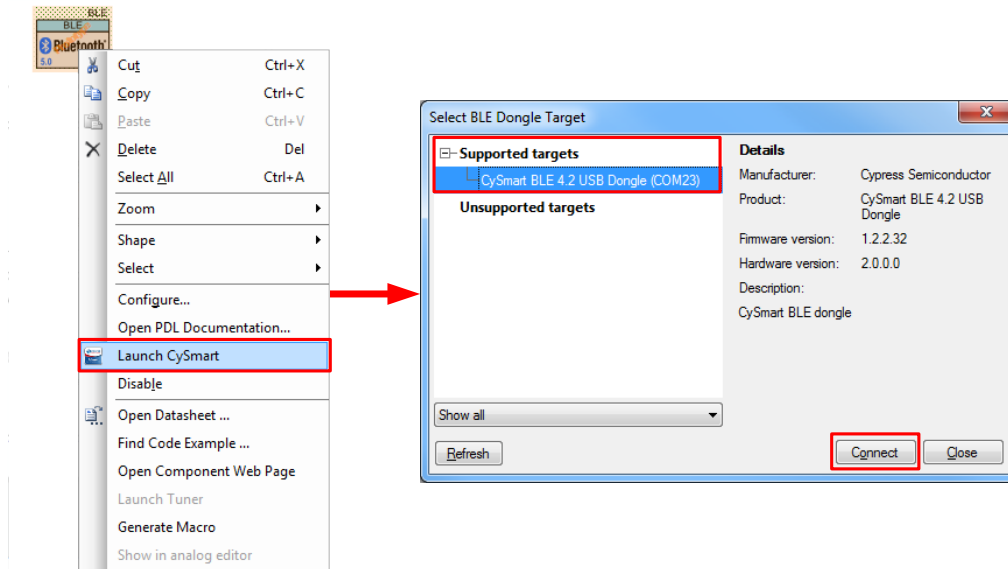
**Note:** Step 5 explains how to use the CySmart mobile app. Step 6 will walk you through using the more comprehensive Windows-based CySmart Host Emulation Tool. (See [Table 2](#) for switch and LED pin assignments.)
5. Exercise the code example with a mobile device.
  - a. Install the CySmart app on your iOS or Android device from the App Store or Google Play store respectively. Launch the app after you install it.
  - b. Power the development kit by connecting it to your PC using a USB cable.
  - c. The BLE device will advertise for 180 seconds. The green LED blinks during this period to indicate the BLE advertising state. If more than 180 seconds has passed, pressing the user button will restart the advertising state.
  - d. Connect to the "Find Me Target" device in the CySmart app on your mobile device and navigate to the "Find Me" service in the application. The red LED state can be put into three states: OFF, blink, or ON depending on the alert state. See [Figure 1](#) for an example of CySmart mobile app interface.
    - i. No Alert: LED OFF
    - ii. Med Alert: LED Blinking
    - iii. High Alert: LED ON

Figure 1. CySmart Mobile App Interface



6. Do the following to test example using the CySmart Host Emulation PC Tool as the Find Me Target Client. This step will require the [CY5670 CySmart USB Dongle](#), which comes with the CY8CKIT-062-BLE kit, or can be purchased separately.
  - a. Connect the BLE Dongle to your Windows PC. Wait for the driver installation to complete, if necessary.
  - b. Launch the CySmart Host Emulation Tool by right-clicking the BLE Component and selecting **Launch CySmart**. Alternatively, you can launch the tool by navigating to **Start > Programs > Cypress** and clicking on **CySmart**.
  - c. CySmart automatically detects the BLE dongle connected to the PC. Click **Refresh** if the BLE dongle does not appear in the **Select BLE Dongle Target** pop-up window. Click **Connect**, as shown in [Figure 2](#).

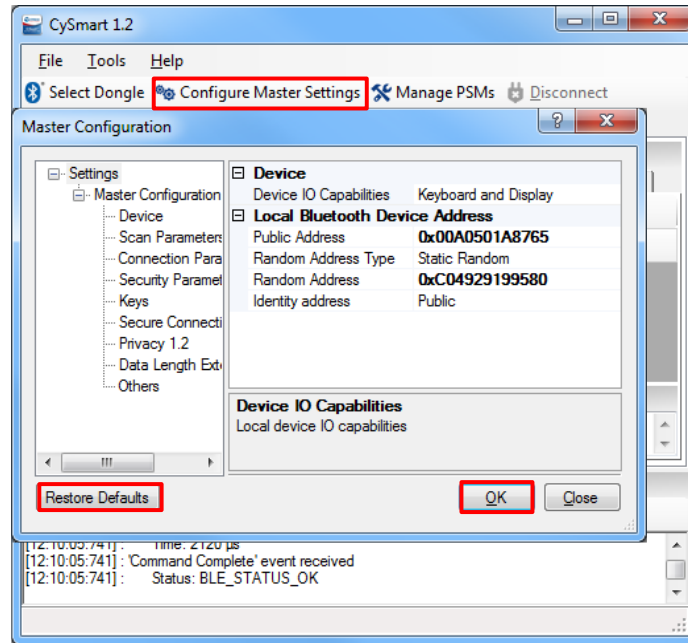
Figure 2. CySmart BLE Dongle Selection



**Note:** If the dongle firmware is outdated, you will be alerted with an appropriate message. You must upgrade the firmware before you can complete this step. Follow the instructions in the window to update the dongle firmware.

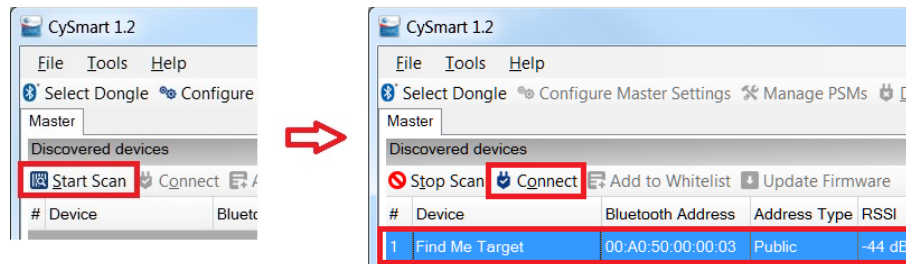
- d. Select **Configure Master Settings** and then click **Restore Defaults**, as [Figure 3](#) shows, and then click **OK**.

Figure 3. CySmart Master Settings Configuration



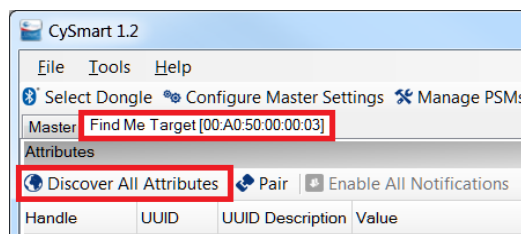
- e. Press the user switch on the development kit to start BLE advertisement if the device is in Hibernate mode (Disconnect LED (blue) is ON). Otherwise, skip this step.
- f. On the CySmart Host Emulation Tool, click **Start Scan**. Your device name (configured as **Find Me Target**) should appear in the Discovered devices list, as Figure 4 shows. Select the device and click **Connect** to establish a BLE connection between the CySmart Host Emulation Tool and your device.

Figure 4. CySmart Device Discovery and Connection



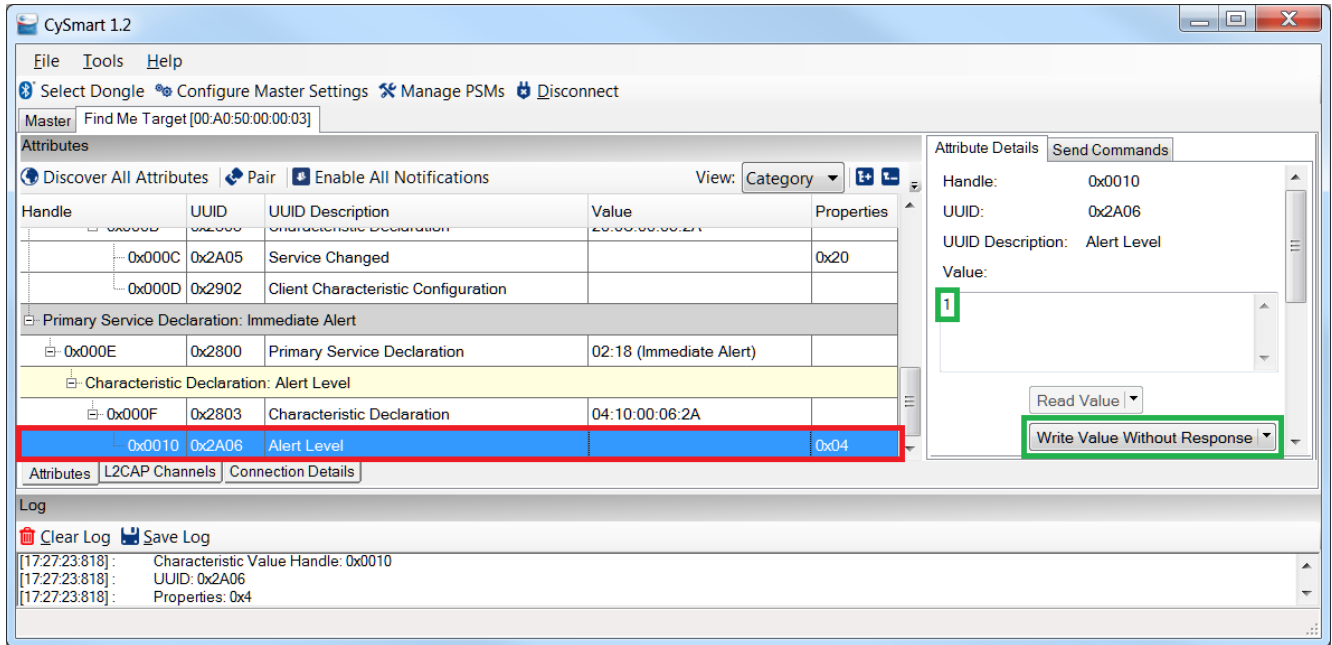
- g. Once connected, switch to the **Find Me Target** device tab and click **Discover all Attributes** from the CySmart Host Emulation Tool, as shown in Figure 5.

Figure 5. CySmart Attribute Discovery



- h. Select the **Alert Level** Characteristic value as shown in Figure 6 and write '1' in it (mid alert) and observe that the Alert LED (red) is blinking.

Figure 6. CySmart Write Alert Level Characteristic



## Design and Implementation

The software flow is rather simple. After the device boots, it advertises for 180 seconds for a connection to a Central such as a smartphone or PC. If a connection is made in that time, it begins a simple loop where it processes BLE events, updates the alert status, goes to Deep Sleep (to save power), and then comes back to processing BLE events. If no connection is made in the 180 seconds, the device goes into Hibernate (very low power mode) until SW2 is pressed. It then restarts the 180 second advertisement period.

Figure 7. Source File Description

Source File	Description
<i>main_cm0p.c</i>	CM0+ main that enables the CM4 CPU and starts the BLE stack.
<i>main_cm4.c</i>	Contains CM4 main(), which handles I/O unfreeze coming out of Hibernate and calls the HostMain() function, which is the main BLE flow.
<i>host_main.c</i>	Contains the main program loop and the BLE AppCallBack() function.
<i>user_interface.c</i>	This file contains the functions to update the LEDs (user interface).
<i>ias.c</i>	This file contains a few very simple functions to support IAS (Immediate Alert Service).

Figure 8. Firmware Flow

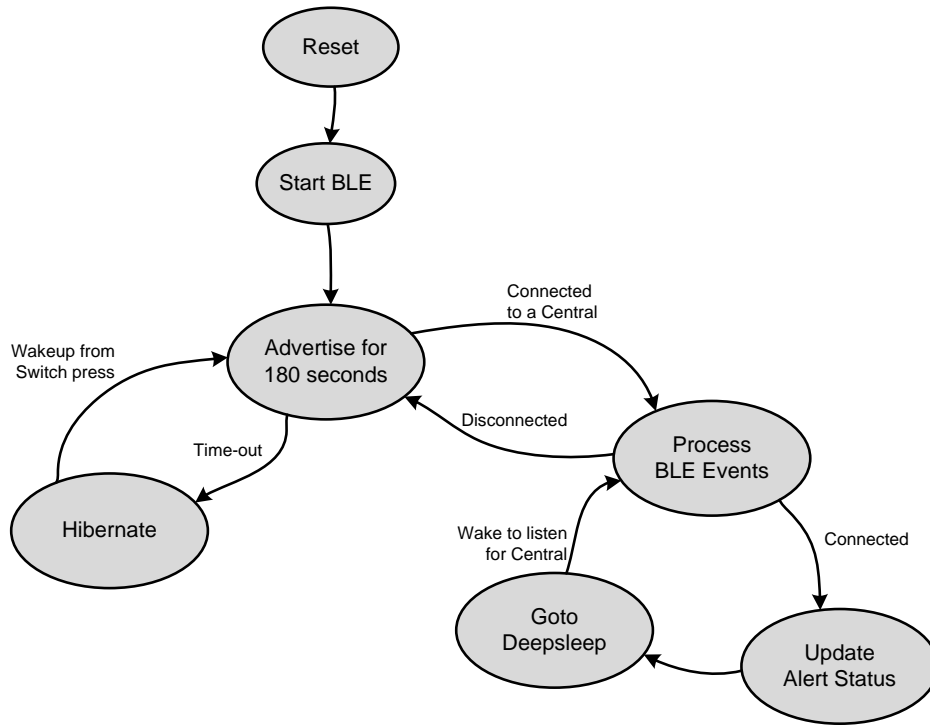
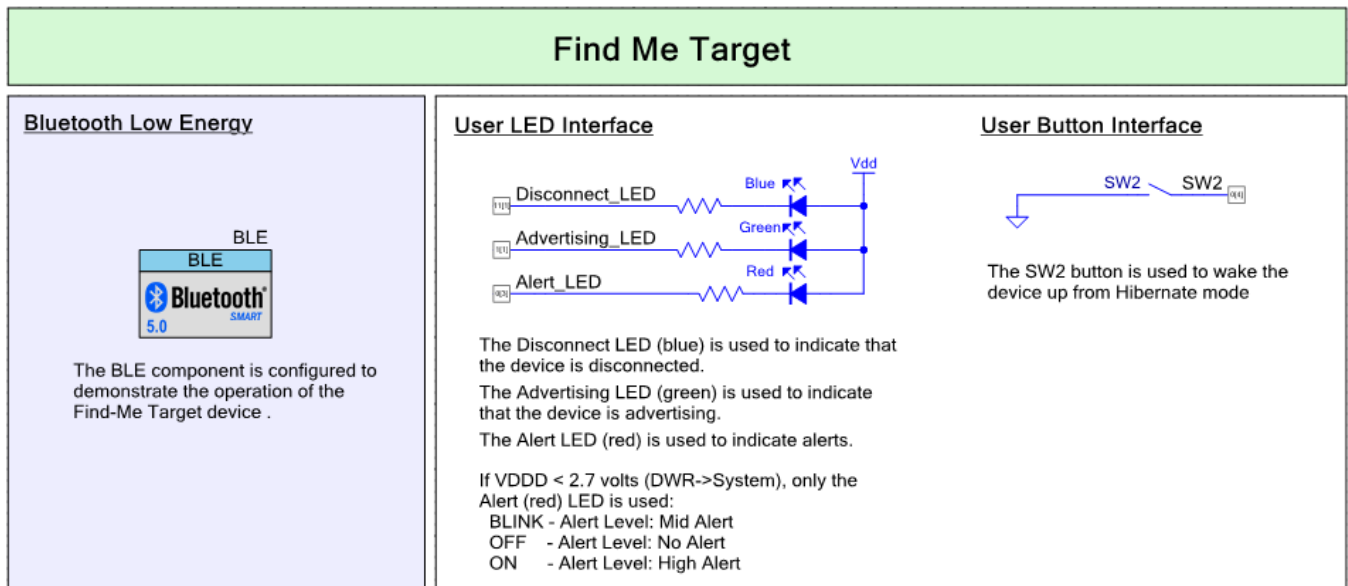


Figure 9 shows the top design schematic.

Figure 9. BLE Find Me Profile Code Example Schematic



The project demonstrates the core functionality of the BLE Component configured as a Find Me Target. After a startup, the device performs initialization of the BLE Component. In this project, two callback functions are used for the BLE operation. One callback function (`StackEventHandler()`) is required for receiving generic events from the BLE stack, and the other (`IasEventHandler()`) is required for receiving events from the Immediate Alert Service. The `CY_BLE_EVT_STACK_ON` event indicates the successful initialization of the BLE stack. After this event is received, the Component starts advertising with the packet structure as configured in the BLE Component Customizer. The BLE Component stops advertising when the 180-second advertising period expires. On an advertisement event timeout, the device goes to a low-power mode (Stop mode) and waits for a device reset event to wake up the device again.

While connected to a Client and between the connection intervals, the device is put into Deep Sleep mode.

## Device Selection

The PSoC 6 BLE device comes in several packages and modules. [Table 1](#) provides a list of kits and the device used for each. To change a device selection, right-click the project name in Workspace Explorer and select **Device Selector**. Choose the PSoC 6 MCU device that is used in the development kit or custom hardware.

Table 1. Device Selection

Development Kit	Device	Comment
CY8CKIT-062	CY8C6347BZI-BLD43	This is the default kit and device for this kit.
CY8CPROTO-063-BLE	CYBLE-416045-02	Change the default device selection if using the CY8CPROTO-063-BLE kit.

## Pin Assignments

Pin assignments and connections required on the development board are configured for CY8CKIT-062 by default. If using a different kit, you may need to reassign the pins to be compatible with that board. [Table 2](#) shows the pin configurations for some of the Cypress kits. Note that CY8CKIT-062 uses a single RGB (Red Green Blue) LED instead of individual LEDs.

Table 2. Pin Assignment

Pin Name	Development Kit		Comment
	CY8CKIT-062 (default)	CY8CPROTO-063-BLE	
Advertising_LED (green)	P1[1] (LED5)	P7[1] (LED4)	Part of RGB LED on CY8CKIT-062.
Disconnect_LED (blue)	P0[3] (LED5)	Any spare GPIO pin (optional)	Part of RGB LED on CY8CKIT-062. You may connect an additional LED to any available pin on the CY8CPROTO-063-BLE kit.
Alert_LED (red)	P11[1] (LED5)	P6[3] (LED3)	Part of RGB LED on CY8CKIT-062.
User Switch	P0[4] (SW2)	P0[4] (SW2)	Same pin used for both kits.

## Components and Settings

[Table 3](#) lists the PSoC Creator Components used in this example, how they are used in the design, and the non-default settings required so they function as intended.

Table 3. PSoC Creator Components

Component	Instance Name	Purpose	Non-default Settings
Bluetooth Low Energy (BLE)	BLE	The BLE Component is configured to demonstrate the operation of the Find Me Target device.	See <a href="#">Parameter Settings</a> .
Digital Input Pin	SW2	The <b>SW2</b> button is used to wake the device up from Hibernate mode.	<b>[General tab]</b> Uncheck HW connection Drive mode: Resistive Pull Up
Digital Output Pin	Disconnect_LED Advertising_LED Alert_LED	These GPIOs are configured as firmware-controlled digital output pins that control LEDs.	<b>[General tab]</b> Uncheck HW connection Drive mode: Strong Drive

For information on the hardware resources used by a Component, see the Component datasheet.

## Parameter Settings

The BLE Component is configured as the Find Me Target in the GAP Peripheral role with the settings shown in the figures below.

Figure 10. General Settings

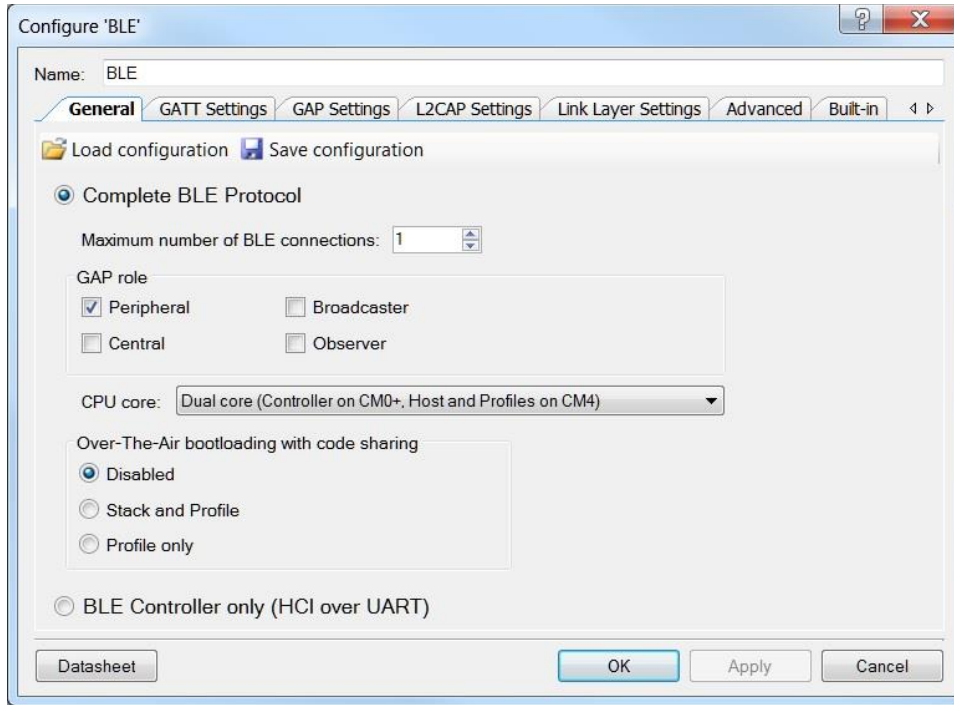


Figure 11. GATT Settings

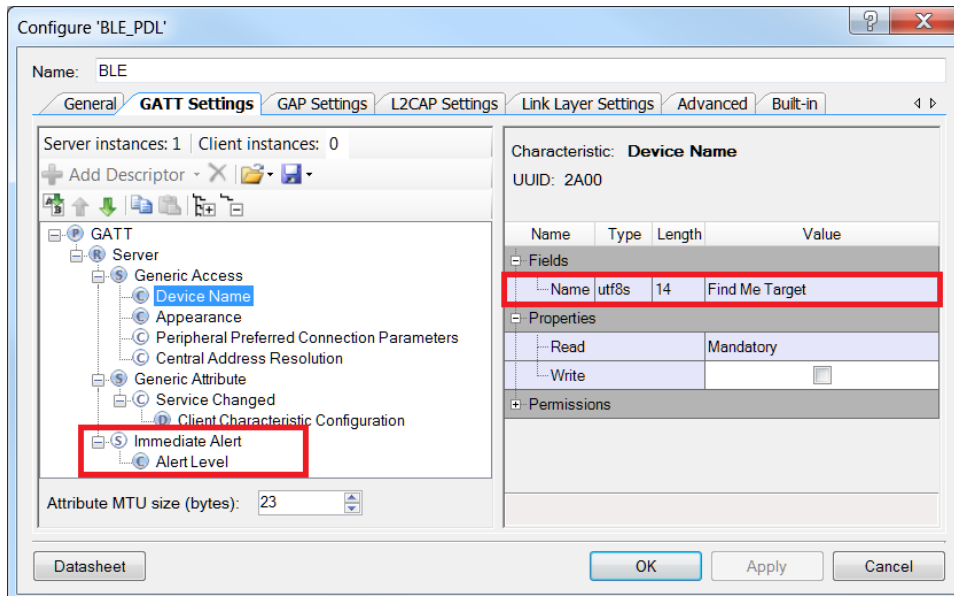


Figure 12. GAP Settings

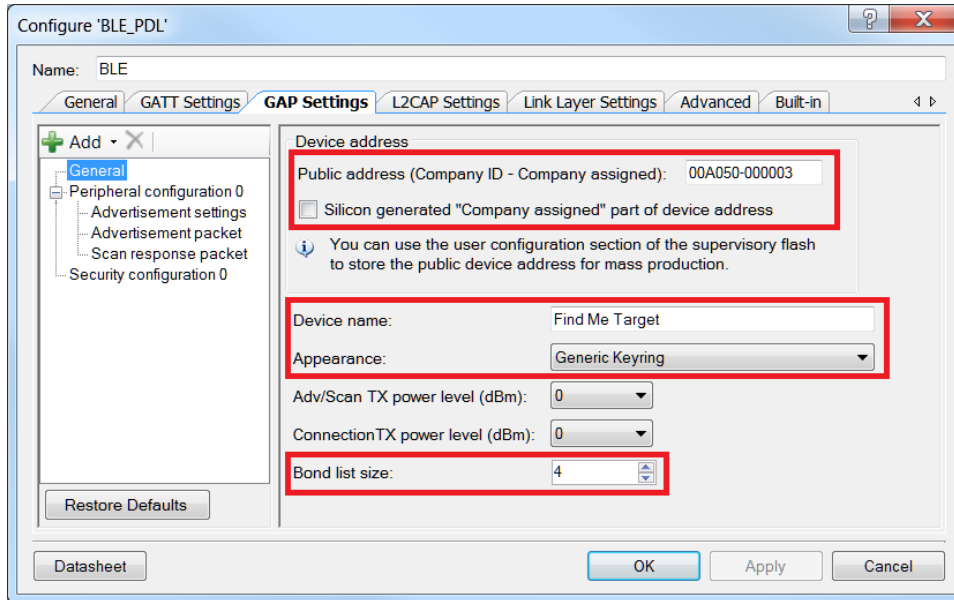


Figure 13. GAP Settings: Advertisement Settings

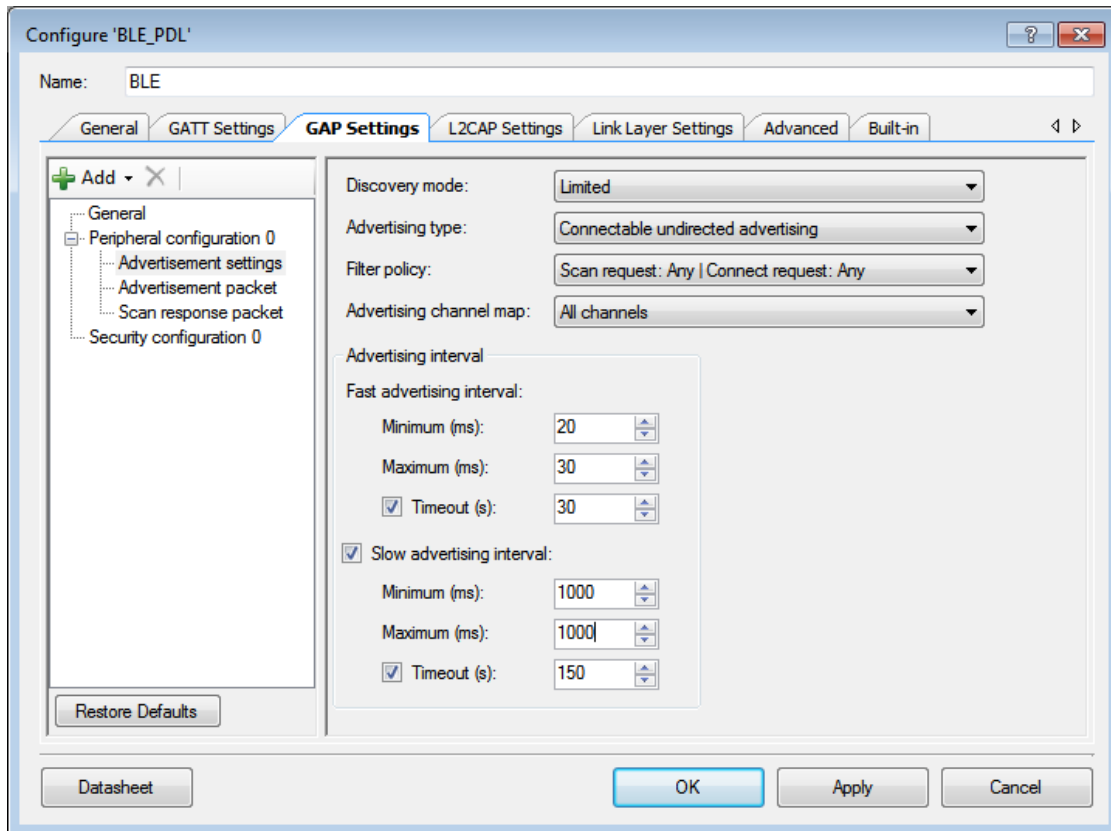


Figure 14. GAP Settings: Advertisement Packet

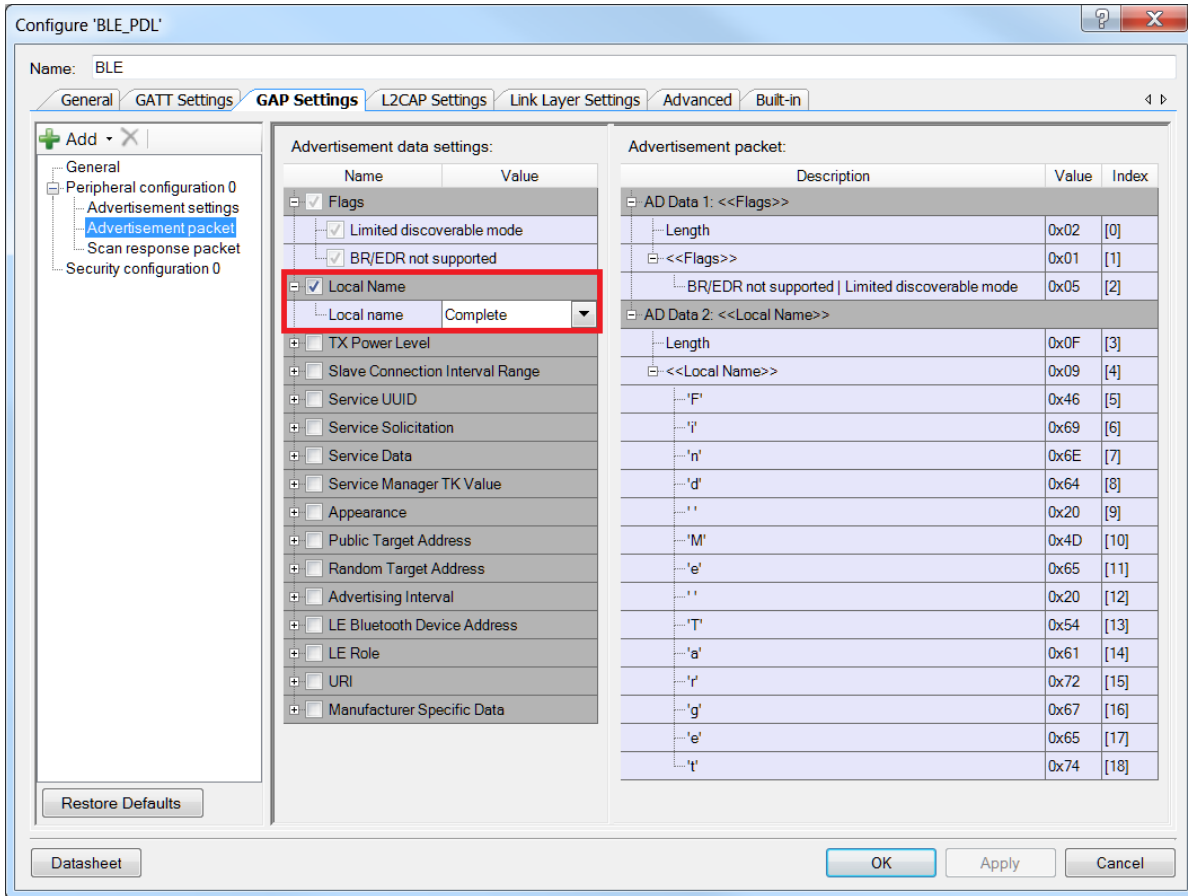
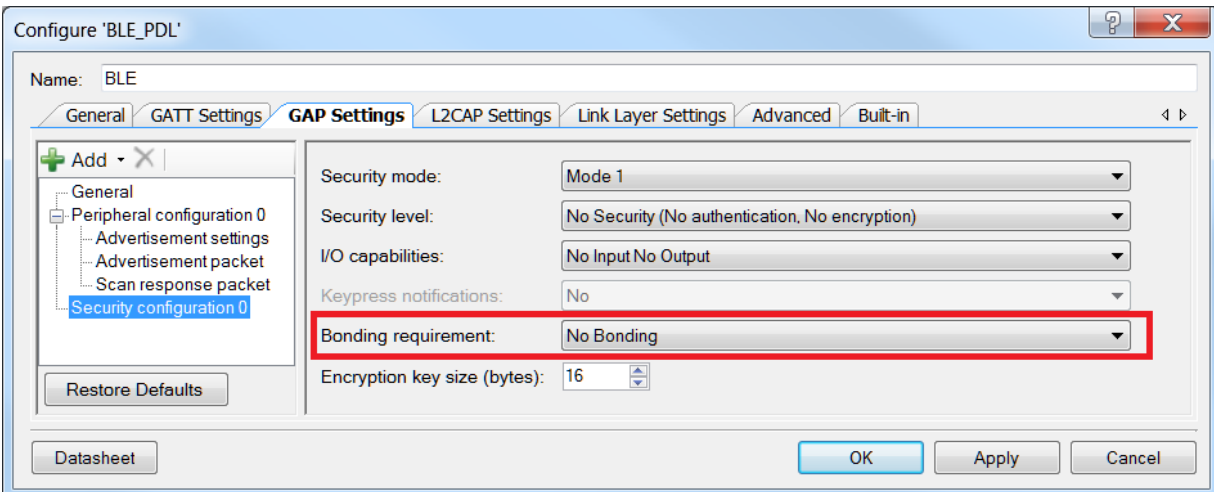


Figure 15. Security Settings



## Switching the CPU Core Usage

This section describes how to switch between different CPU usage (Single CPU/ Dual CPU) in BLE PDL examples.

The BLE Component has a CPU Core parameter that defines the usage of the two cores. It can take the following values:

- Single core (Complete Component on CM0+) – only CM0+ will be used.
- Single core (Complete Component on CM4) – only CM4 will be used.
- Dual core (Controller on CM0+, Host and Profiles on CM4) – CM0+ and CM4 will be used: CM0+ for the Controller and CM4 for the Host and Profiles.

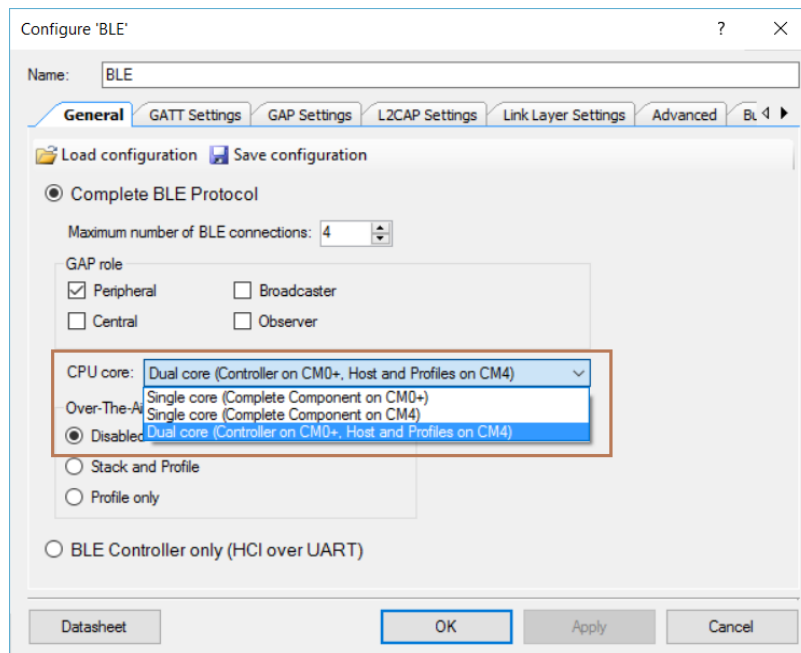
The BLE example structure allows easy switching between different CPU core options. Important to remember:

- All application host files must be run on the host core.
- The BLESS interrupt must be assigned to the core where the controller runs.

Do the following to switch CPU core usage:

1. In the BLE Component Customizer **General** tab, select the appropriate CPU core option.

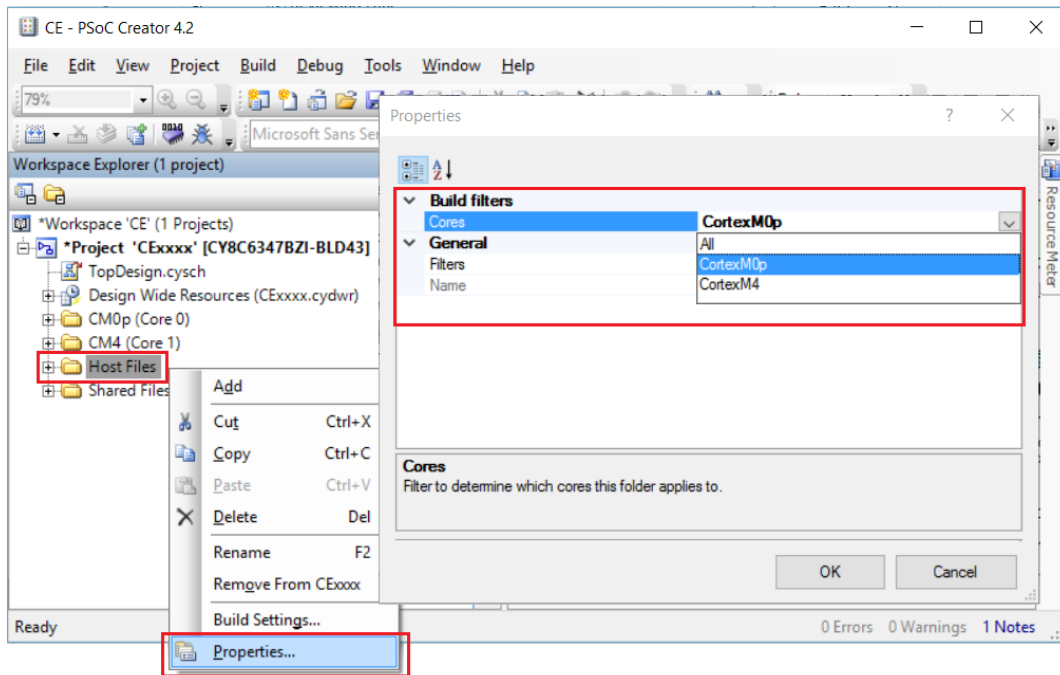
Figure 16. Select CPU Core



2. Identify the core on which host files will run. In the Workspace Explorer panel, right-click **Host Files** and then choose **Properties**. Set the **Cores** property corresponding to the CPU core chosen in Step 1, as shown in [Figure 17](#).

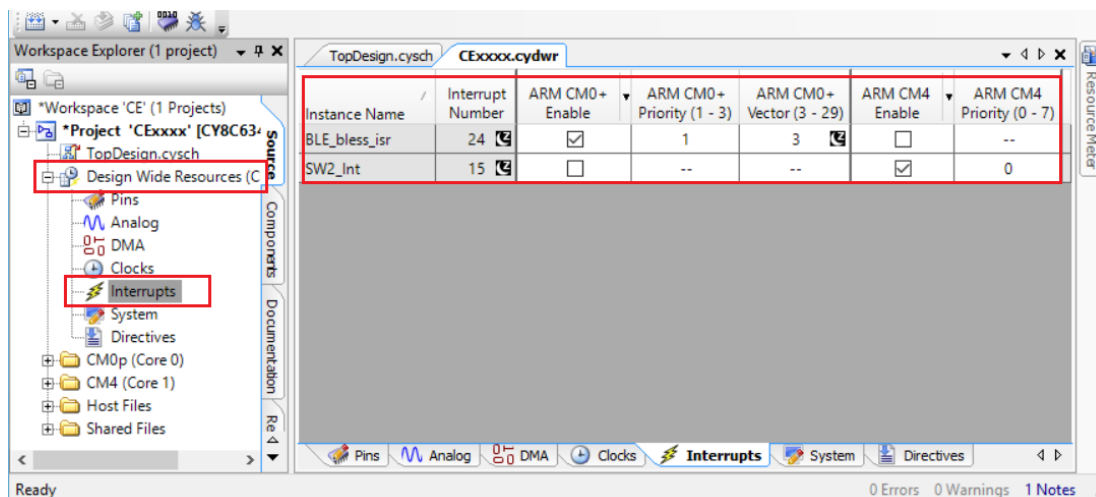
- for Single core (Complete Component on CM0+) option – CM0+
- for Single core (Complete Component on CM4) option – CM4
- for Dual core (Controller on CM0+, Host and Profiles on CM4) option – CM4

Figure 17. Change Core Properties



3. Assign BLE\_bless\_isr and other peripheral (button – SW2, timer(s) etc.) interrupts to the appropriate core in **DWR > Interrupts** tab:
  - for **Single core (Complete Component on CM0+)** option: BLE\_bless\_isr and peripheral interrupts on **CM0+**
  - for **Single core (Complete Component on CM4)** option: BLE\_bless\_isr and peripheral interrupts on **CM4**
  - for **Dual core (Controller on CM0+, Host and Profiles on CM4)** option: BLE\_bless\_isr interrupt on **CM0+**, other peripheral interrupts on **CM4**

Figure 18. Assign Interrupts



## Reusing This Example

This example is designed for the CY8CKIT-062-BLE pioneer kit. To port the design to a different PSoC 6 BLE device and/or kit, change the target device using the Device Selector and update the pin assignments in the Design Wide Resources Pins settings as needed.

## Related Documents

Application Notes		
<a href="#">AN210781</a>	Getting Started with PSoC 6 MCU with Bluetooth Low Energy (BLE) Connectivity	Describes PSoC 6 BLE, and how to build a basic code example.
<a href="#">AN215656</a>	PSoC 6 MCU Dual-CPU System Design	Presents the theory and design considerations related to this code example.
Software and Drivers		
<a href="#">CySmart – Bluetooth® LE Test and Debug Tool</a>		CySmart is a Bluetooth LE host emulation tool for Windows PCs. The tool provides an easy-to-use Graphical User Interface (GUI) to enable the user to test and debug their Bluetooth LE peripheral applications.
PSoC Creator Component Datasheets		
<a href="#">Bluetooth Low Energy (BLE_PDL) Component</a>		The Bluetooth Low Energy (BLE_PDL) Component provides a comprehensive GUI-based configuration window to facilitate designing applications requiring BLE connectivity.
Device Documentation		
<a href="#">PSoC® 6 MCU: PSoC 63 with BLE. Datasheet.</a>		<a href="#">PSoC® 6 MCU: PSoC 63 with BLE Architecture Technical Reference Manual</a>
Development Kit (DVK) Documentation		
<a href="#">CY8CKIT-062-BLE PSoC 6 BLE Pioneer Kit</a>		
<a href="#">CY8CPROTO-063-BLE PSoC 6 BLE Prototyping Kit</a>		

## Document History

Document Title: CE217637 - BLE Find Me Profile with PSoC 6 MCU with BLE Connectivity

Document Number: 002-17637

Revision	ECN	Orig. of Change	Submission Date	Description of Change
**	6090384	NPAL	06/05/2018	New spec
*A	6301235	MEH	10/04/2018	Changed LED usage to make project compatible with CY8CPROTO-063-BLE Kit.

## Worldwide Sales and Design Support

Cypress maintains a worldwide network of offices, solution centers, manufacturer's representatives, and distributors. To find the office closest to you, visit us at [Cypress Locations](#).

### Products

Arm® Cortex® Microcontrollers	<a href="http://cypress.com/arm">cypress.com/arm</a>
Automotive	<a href="http://cypress.com/automotive">cypress.com/automotive</a>
Clocks & Buffers	<a href="http://cypress.com/clocks">cypress.com/clocks</a>
Interface	<a href="http://cypress.com/interface">cypress.com/interface</a>
Internet of Things	<a href="http://cypress.com/iot">cypress.com/iot</a>
Memory	<a href="http://cypress.com/memory">cypress.com/memory</a>
Microcontrollers	<a href="http://cypress.com/mcu">cypress.com/mcu</a>
PSoC	<a href="http://cypress.com/psoc">cypress.com/psoc</a>
Power Management ICs	<a href="http://cypress.com/pmic">cypress.com/pmic</a>
Touch Sensing	<a href="http://cypress.com/touch">cypress.com/touch</a>
USB Controllers	<a href="http://cypress.com/usb">cypress.com/usb</a>
Wireless Connectivity	<a href="http://cypress.com/wireless">cypress.com/wireless</a>

### PSoC® Solutions

[PSoC 1](#) | [PSoC 3](#) | [PSoC 4](#) | [PSoC 5LP](#) | [PSoC 6 MCU](#)

### Cypress Developer Community

[Community](#) | [Projects](#) | [Videos](#) | [Blogs](#) | [Training](#) | [Components](#)

### Technical Support

[cypress.com/support](http://cypress.com/support)

All other trademarks or registered trademarks referenced herein are the property of their respective owners.



Cypress Semiconductor  
198 Champion Court  
San Jose, CA 95134-1709

© Cypress Semiconductor Corporation, 2013-2018. This document is the property of Cypress Semiconductor Corporation and its subsidiaries, including Spansion LLC ("Cypress"). This document, including any software or firmware included or referenced in this document ("Software"), is owned by Cypress under the intellectual property laws and treaties of the United States and other countries worldwide. Cypress reserves all rights under such laws and treaties and does not, except as specifically stated in this paragraph, grant any license under its patents, copyrights, trademarks, or other intellectual property rights. If the Software is not accompanied by a license agreement and you do not otherwise have a written agreement with Cypress governing the use of the Software, then Cypress hereby grants you a personal, non-exclusive, nontransferable license (without the right to sublicense) (1) under its copyright rights in the Software (a) for Software provided in source code form, to modify and reproduce the Software solely for use with Cypress hardware products, only internally within your organization, and (b) to distribute the Software in binary code form externally to end users (either directly or indirectly through resellers and distributors), solely for use on Cypress hardware product units, and (2) under those claims of Cypress's patents that are infringed by the Software (as provided by Cypress, unmodified) to make, use, distribute, and import the Software solely for use with Cypress hardware products. Any other use, reproduction, modification, translation, or compilation of the Software is prohibited.

TO THE EXTENT PERMITTED BY APPLICABLE LAW, CYPRESS MAKES NO WARRANTY OF ANY KIND, EXPRESS OR IMPLIED, WITH REGARD TO THIS DOCUMENT OR ANY SOFTWARE OR ACCOMPANYING HARDWARE, INCLUDING, BUT NOT LIMITED TO, THE IMPLIED WARRANTIES OF MERCHANTABILITY AND FITNESS FOR A PARTICULAR PURPOSE. No computing device can be absolutely secure. Therefore, despite security measures implemented in Cypress hardware or software products, Cypress does not assume any liability arising out of any security breach, such as unauthorized access to or use of a Cypress product. In addition, the products described in these materials may contain design defects or errors known as errata which may cause the product to deviate from published specifications. To the extent permitted by applicable law, Cypress reserves the right to make changes to this document without further notice. Cypress does not assume any liability arising out of the application or use of any product or circuit described in this document. Any information provided in this document, including any sample design information or programming code, is provided only for reference purposes. It is the responsibility of the user of this document to properly design, program, and test the functionality and safety of any application made of this information and any resulting product. Cypress products are not designed, intended, or authorized for use as critical components in systems designed or intended for the operation of weapons, weapons systems, nuclear installations, life-support devices or systems, other medical devices or systems (including resuscitation equipment and surgical implants), pollution control or hazardous substances management, or other uses where the failure of the device or system could cause personal injury, death, or property damage ("Unintended Uses"). A critical component is any component of a device or system whose failure to perform can be reasonably expected to cause the failure of the device or system, or to affect its safety or effectiveness. Cypress is not liable, in whole or in part, and you shall and hereby do release Cypress from any claim, damage, or other liability arising from or related to all Unintended Uses of Cypress products. You shall indemnify and hold Cypress harmless from and against all claims, costs, damages, and other liabilities, including claims for personal injury or death, arising from or related to any Unintended Uses of Cypress products.

Cypress, the Cypress logo, Spansion, the Spansion logo, and combinations thereof, WICED, PSoC, CapSense, EZ-USB, F-RAM, and Traveo are trademarks or registered trademarks of Cypress in the United States and other countries. For a more complete list of Cypress trademarks, visit [cypress.com](http://cypress.com). Other names and brands may be claimed as property of their respective owners.

## Looking for pricing, stock, or lifecycle information?

Click below to explore more details on WIN SOURCE:

 [View CY8CPROTO-063-BLE on WIN SOURCE](#)

 [Infineon Technologies](#) Information

## Optimize Your Supply Chain with WIN SOURCE Solutions

-  Global Sourcing Solution
-  Obsolete Management
-  Cost Control Management
-  Shortage Management
-  Alternative Solution
-  Excess Inventory Management