



THE DATASHEET OF CY3265C-RGB





CY3265-RGB Evaluation Kit Guide

Doc. # 001-46025 Rev. **

Cypress Semiconductor
198 Champion Court
San Jose, CA 95134-1709
Phone (USA): 800.858.1810
Phone (Intl): 408.943.2600
<http://www.cypress.com>

© Cypress Semiconductor Corporation, 2008. The information contained herein is subject to change without notice. Cypress Semiconductor Corporation assumes no responsibility for the use of any circuitry other than circuitry embodied in a Cypress product. Nor does it convey or imply any license under patent or other rights. Cypress products are not warranted nor intended to be used for medical, life support, life saving, critical control or safety applications, unless pursuant to an express written agreement with Cypress. Furthermore, Cypress does not authorize its products for use as critical components in life-support systems where a malfunction or failure may reasonably be expected to result in significant injury to the user. The inclusion of Cypress products in life-support systems application implies that the manufacturer assumes all risk of such use and in doing so indemnifies Cypress against all charges.

Any Source Code (software and/or firmware) is owned by Cypress Semiconductor Corporation (Cypress) and is protected by and subject to worldwide patent protection (United States and foreign), United States copyright laws and international treaty provisions. Cypress hereby grants to licensee a personal, non-exclusive, non-transferable license to copy, use, modify, create derivative works of, and compile the Cypress Source Code and derivative works for the sole purpose of creating custom software and/or firmware in support of licensee product to be used only in conjunction with a Cypress integrated circuit as specified in the applicable agreement. Any reproduction, modification, translation, compilation, or representation of this Source Code except as specified above is prohibited without the express written permission of Cypress.

Disclaimer: CYPRESS MAKES NO WARRANTY OF ANY KIND, EXPRESS OR IMPLIED, WITH REGARD TO THIS MATERIAL, INCLUDING, BUT NOT LIMITED TO, THE IMPLIED WARRANTIES OF MERCHANTABILITY AND FITNESS FOR A PARTICULAR PURPOSE. Cypress reserves the right to make changes without further notice to the materials described herein. Cypress does not assume any liability arising out of the application or use of any product or circuit described herein. Cypress does not authorize its products for use as critical components in life-support systems where a malfunction or failure may reasonably be expected to result in significant injury to the user. The inclusion of Cypress' product in a life-support systems application implies that the manufacturer assumes all risk of such use and in doing so indemnifies Cypress against all charges.

Use may be limited by and subject to the applicable Cypress software license agreement.

PriSM™, EZ-Color™, PSoC Designer™, Programmable System-on-Chip™, and PSoC Express™ are trademarks and PSoC® is a registered trademark of Cypress Semiconductor Corp. All other trademarks or registered trademarks referenced herein are property of the respective corporations.

Flash Code Protection

Cypress products meet the specifications contained in their particular Cypress PSoC Data Sheets. Cypress believes that its family of PSoC products is one of the most secure families of its kind on the market today, regardless of how they are used. There may be methods, unknown to Cypress, that can breach the code protection features. Any of these methods, to our knowledge, would be dishonest and possibly illegal. Neither Cypress nor any other semiconductor manufacturer can guarantee the security of their code. Code protection does not mean that we are guaranteeing the product as "unbreakable."

Cypress is willing to work with the customer who is concerned about the integrity of their code. Code protection is constantly evolving. We at Cypress are committed to continuously improving the code protection features of our products.

Contents



1. Introduction	5
1.1 Purpose	5
1.2 Install Software	5
1.2.1 Install the CY3265-RGB Kit Software	5
1.2.2 Install the Latest Version of PSoC Programmer.....	5
1.2.3 Install the PSoC MiniProg	6
1.3 RGB Unit Layout.....	7
1.3.1 The On/Off Button	7
1.3.2 The Color Selection Button	7
1.3.3 The Liquid Crystal Display	7
1.4 Document Revision History	8
1.5 Documentation Conventions	8
2. Application Guide	9
2.1 Installation.....	9
2.1.1 Installation Requirements.....	9
2.1.2 Installing the Application	9
2.1.3 Uninstalling the Application	9
2.2 Introduction	9
2.3 Representing Colors	11
2.4 Status Display.....	14
2.5 Running the Application with no RGB Unit Attached	15
2.6 LED Luminous Flux	16
2.7 Dynamic Update	16
2.8 Shutting Down the Application.....	16
3. Color Accuracy	17
3.1 Finding Calibration Values.....	17
3.2 Setting Primary Color Coordinates	18
3.3 Building a new RGB firmware image	19
3.3.1 Saving the File	19
3.3.2 Rebuilding your firmware	19
3.3.3 Loading your new firmware	19
3.3.4 Using PSoC Designer 4.4	19
3.3.5 Using PSoC Designer 5.0	20



1. Introduction



WARNING: HIGH BRIGHTNESS LEDs CAN CAUSE PERMANENT EYE DAMAGE!

Do not look at the LEDs if they are not covered by the protective enclosure. The LEDs illuminate at a very high intensity and can cause permanent eye damage if they are viewed without the protective enclosure.

1.1 Purpose

The CY3265-RGB Evaluation Kit demonstrates the ability of an EZ-Color controller to control three primary, high brightness LEDs and create accurate, mixed-color output. The three LEDs in the CY3265 evaluation unit use the primary colors red, green, and blue, although any three primary color LEDs can be used in a design, depending upon the application and the desired color gamut.

Right out of the box, CY3265-RGB Evaluation kit can be used to evaluate and demonstrate EZ-Color functionality, including color mixing. See the quick start on how to use the kit with the factory installed firmware.

This guide serves two main purposes:

1. [Chapter 1. Introduction, on page 5](#) discusses kit contents, installation instructions, and MiniProg.
2. [Chapter 2. Application Guide, on page 9](#) discusses the Intelligent Lighting Control application.
3. [Chapter 3. Color Accuracy, on page 17](#) discusses the Color Accuracy, Primary Color Coordinates, and Building RGB Firmware.

1.2 Install Software

1.2.1 Install the CY3265-RGB Kit Software

1. Insert the CY3265-RGB Kit CD.
2. Open *Intelligent Lighting Control.msi*.
3. Follow the Setup Wizard instructions.

1.2.2 Install the Latest Version of PSoC Programmer

To ensure you have the latest version of PSoC Programmer:

1. Launch PSoC Programmer.
2. Select **Help** → **About PSoC Programmer**.
3. Note the version number and click **OK**.

4. Click **Check for Updates**. PSoC Programmer launches your web browser and opens the [PSoC Programmer web site](#).
5. Compare the PSoC Programmer version number you noted in [Step 3](#). to the latest version available on the web site. If the version on the web site is newer, click **Download**, and install the newest version.

1.2.3 Install the PSoC MiniProg

1. Ensure all content on the Tools CD is installed.
2. Plug the MiniProg into your PC via the USB cable. If this is the first time you have connected the PSoC MiniProg, the Windows Found New Hardware Wizard opens. If the Windows Found New Hardware Wizard does not open, then the PSoC MiniProg software is already installed and you do not need to continue with these instructions.
3. Select the **No, not this time** option button, and click **Next**.
4. Select the **Install from a list or specific location (Advanced)** option button and click **Next**.
5. Select the **Don't search. I will choose the driver to install** option button, and click **Next**.
6. Select the **USB Mini Programmer (x.x.x.x)** driver and click **Next**.
7. When prompted that the USB Mini Programmer (x.x.x.x) software has not passed Windows Logo Testing, click **Continue Anyway**.
8. When Windows has completed the installation, click **Finish**.

1.3 RGB Unit Layout

1.3.1 The On/Off Button

The CY3265-RGB evaluation hardware has two buttons and a liquid crystal display. These allow the unit to be demonstrated without using a personal computer to control the unit. When held properly for use, the liquid crystal display is on the top right. When held in this orientation, the right-most button alternately turns the high brightness LEDs on and off. The default setting when first applying power to the unit is ON; pressing this right-most button illuminates the LEDs.

1.3.2 The Color Selection Button

When the unit is held as described in the previous section, the left-most button along the bottom edge cycles between seven preset colors. The initial color is white (all three LEDs are illuminated at high intensity). Pressing this button changes to the next color of the seven preset colors. The color sequence cycles through white, red, green, blue, yellow, magenta and cyan.

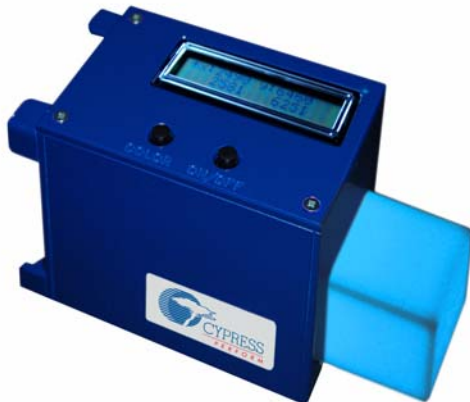
Note If the unit has been controlled from a personal computer using the USB interface, the color displayed upon powering the unit and pressing the On/Off button is the last color setting selected when using the monitor application. The unit displays 'white' even though it has never been connected to a personal computer, or the last color selected could not be displayed at the selected intensity, the LEDs do not illuminate (an impossible color and intensity combination has been selected). Pressing the color selection button, selects a valid color for display from the seven preset colors and the LEDs illuminate with that color.

1.3.3 The Liquid Crystal Display

The liquid crystal display displays the currently selected color using CIE 1931 color coordinates. The values displayed represent the CIE x, y coordinates for the currently selected color, whether chosen from the seven preset colors or selected from the Intelligent Lighting Control application (when using the factory installed firmware).

If the LEDs are illuminated, an asterisk (***) is displayed on the left end of the top row of the liquid crystal display (this is useful if the last color selected cannot be displayed with the given LEDs, resulting in the LEDs being dark).

Figure 1-1. RGB Unit



1.4 Document Revision History

Table 1-1. Revision History

Revision	PDF Creation Date	Origin of Change	Description of Change
**	6/27/08	AESA	New Guide

1.5 Documentation Conventions

Table 1-2. Document Conventions for Guides

Convention	Usage
Courier New	Displays file locations, user entered text, and source code: C:\...\cd\icc\
<i>Italics</i>	Displays file names and reference documentation: Read about the <i>sourcefile.hex</i> file in the <i>PSoC Designer User Guide</i> .
[Bracketed, Bold]	Displays keyboard commands in procedures: [Enter] or [Ctrl] [C]
File → Open	Represents menu paths: File → Open → New Project
Bold	Displays commands, menu paths, and icon names in procedures: Click the File icon and then click Open .
Times New Roman	Displays an equation: $2 + 2 = 4$
Text in gray boxes	Describes Cautions or unique functionality of the product.

2. Application Guide



2.1 Installation

2.1.1 Installation Requirements

To use the application included with the CY3265 RGB evaluation unit, a personal computer running Windows Vista or Windows XP is required. The application runs under 32-bit XP or 32-bit Vista. The computer must have the minimum amount of memory required to run the desired version of Windows, and at least one megabyte of available disk storage. In addition, one available USB port is needed to connect the evaluation unit to the computer, using an A to mini-B USB cable.

2.1.2 Installing the Application

The Intelligent Lighting Control application is included on the kit CD. To install the application, do the following:

1. Open the CD and click on the **Intelligent Lighting Control.msi** file. The application, along with a required .dll file (and .NET Framework 2.0, if it is not already installed), installs.
2. The Intelligent Lighting Control application and associated .dll file installs into the location `C:\Program Files\Cypress Microsystems\Intelligent Color Control` on your computer's default disk, usually drive C:.

2.1.3 Uninstalling the Application

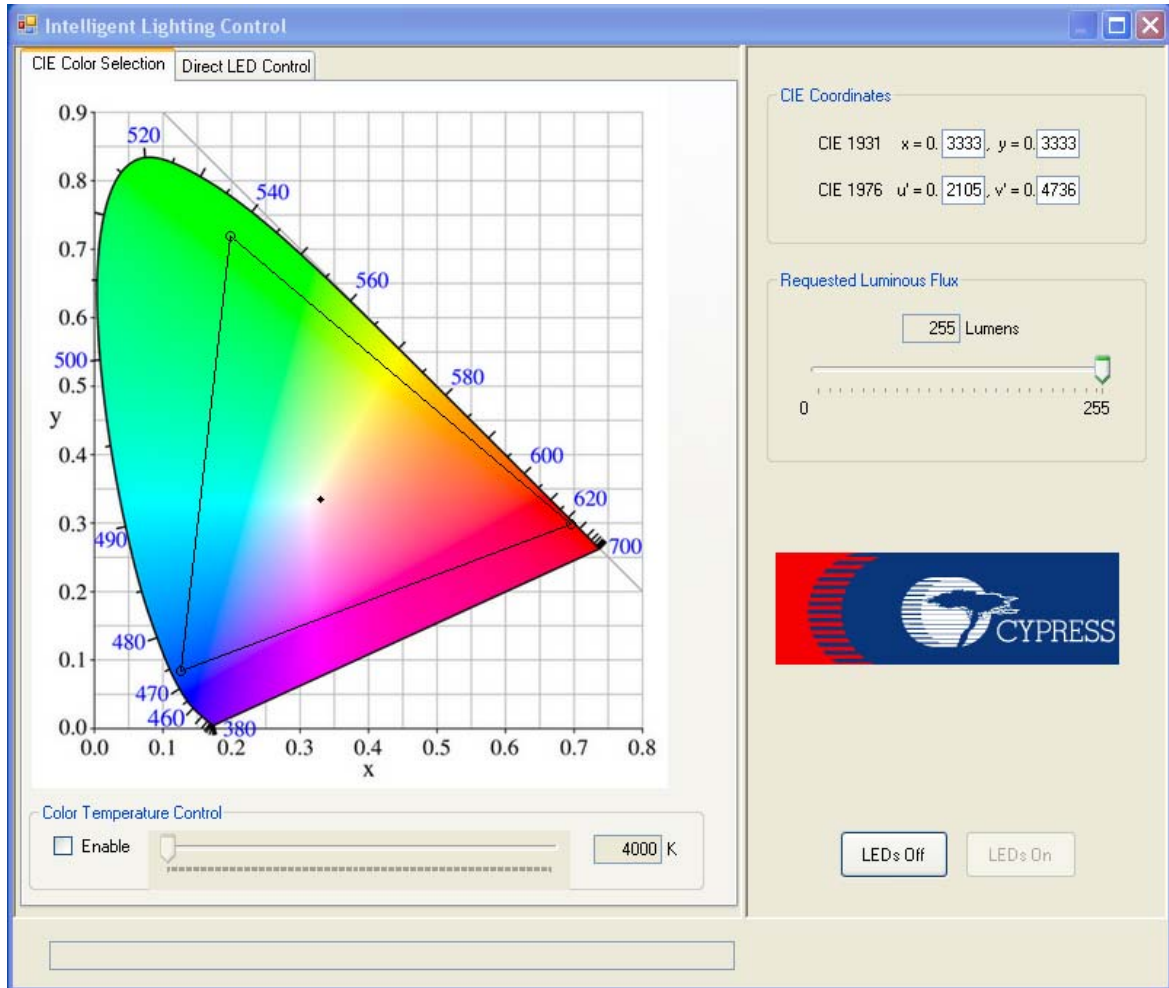
To uninstall the application, do the following:

1. Run the **Install** program again and click on the **Remove Intelligent Lighting Control** button.
2. Click on the **Finish** button at the bottom right of the setup window.

2.2 Introduction

The purpose of the CY3265-RGB evaluation unit is to illustrate the ability of Cypress's EZ-Color™ HB-LED Controller powered by PrISM™ technology to control three primary, high power LEDs, creating accurate mixed-color output. The three LEDs in the CY3265-RGB evaluation unit consist of primary colors red, green, and blue. The application described controls the RGB evaluation unit through a USB port on a personal computer that is running either the Windows Vista (32-bit) or Windows XP (32-bit) operating system. The application's startup display, with a board attached and operating is shown in [Figure 2-1 on page 10](#).

Figure 2-1. Intelligent Lighting Control Application Window



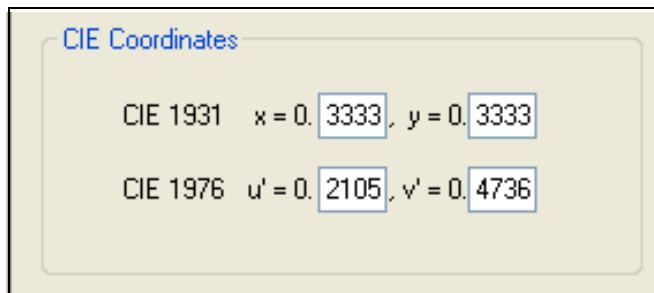
2.3 Representing Colors

The application has two modes of control: a *CIE Color Selection Mode* and *Direct LED Control Mode*. These two modes are selected using tabs displayed on the upper left edge of the application window. The CIE Color Selection Mode is the active display when the application is started and is intended to be the most common mode used to control the RGB unit.

The colors that can be mixed are determined by the choice of LEDs used in the unit. The colors produced by individual LEDs are referred to as *primary colors*. All other colors are created by mixing these primary colors. Mixed colors appear the same to the eye as if produced by an LED with that color as its primary color. The interior portion of the triangle displayed on the color chart represents the range of colors that can be mixed by the LEDs in the unit. The range of colors that can be mixed when using a given set of primary LEDs is called the *color gamut* for those LEDs. Once the primary LED colors are determined, as they are in the evaluation unit, the color gamut is defined by those choices. Thus, the triangle displayed by the application defines the *color gamut* for the unit. Colors outside of the color gamut cannot be represented by the given LEDs and the user cannot select colors outside the color gamut¹.

The CIE Color Mix Mode displays the 1931 CIE Color chart. This chart represents the range of colors visible to the human eye. Clicking anywhere within the color gamut triangle places a dot at the selected point. The corresponding CIE coordinates for that color coordinate are transmitted to the RGB unit, where the selected color is displayed by adjusting the three LEDs to brightness levels that create the specified mixed color. The resulting coordinates are displayed in the *CIE Coordinates* panel on the upper right portion of the display. The CIE 1931 x, y coordinates are displayed in the upper two coordinate fields and the u', v' coordinates are displayed in the lower two fields (see [Figure 2-2](#)). An alternative to selecting a color by clicking in the color chart is to enter coordinates into these fields. The user can enter a color point in x, y coordinates, u', v' coordinates, or any combination of the two coordinate systems.

Figure 2-2. The CIE Color Coordinate Fields



CIE Coordinates

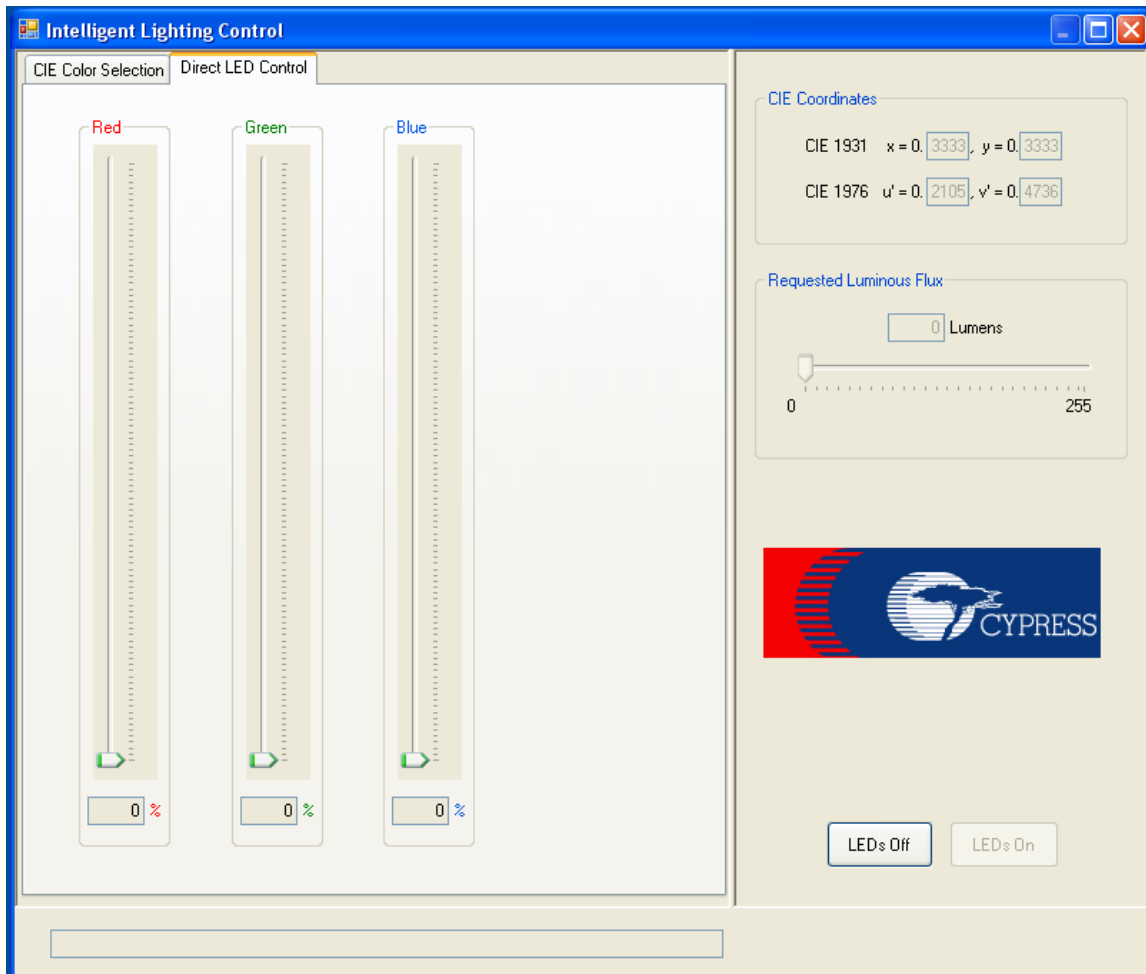
CIE 1931 x = 0. 3333, y = 0. 3333

CIE 1976 u' = 0. 2105, v' = 0. 4736

The Direct LED Control Mode is an alternative to specifying colors using CIE coordinates ([Figure 2-3 on page 12](#)). This mode displays three slider controls, one for each LED on the board. Moving a slider from bottom to top causes the corresponding LED to light from zero to one-hundred percent of its maximum rated flux. When the direct LED control mode is enabled, all controls that relate to mixing colors are disabled, including the Requested Luminous Flux slider that sets the total flux of a given mixed color: these controls have no meaning when setting the individual LED flux levels manually.

1. The triangle is an approximate gamut boundary. For points adjacent to the triangle edges, especially close to the LED coordinates (that is, the corners), it is possible to select a point that falls outside of the color gamut. For any coordinate outside of the gamut, the LEDs turn off.

Figure 2-3. Direct LED Control Panel



The application can also limit color choices to those that are produced by a black body radiator. A black body radiator is a theoretical, color-neutral object defined by Planck's Law. A black body radiator glows (radiates energy) at different colors as it is heated. When enabled, the black body curve is displayed on the CIE color chart (see [Figure 2-4 on page 13](#)). This curve marks the colors that correspond to the color of a black body radiator over a range of temperatures in Kelvin. The user selects the color temperature value by sliding the color temperature slider (see [Figure 2-5 on page 13](#)). Color temperature (more generally, correlated color temperature) is a common way that the color of light is specified. Disabling the color temperature control removes the black body curve from the color chart, disables the color temperature slider, and enables the controls used to specify mixed colors using the CIE color chart.

Figure 2-4. The Intelligent Lighting Control Application in Color Temperature Mode

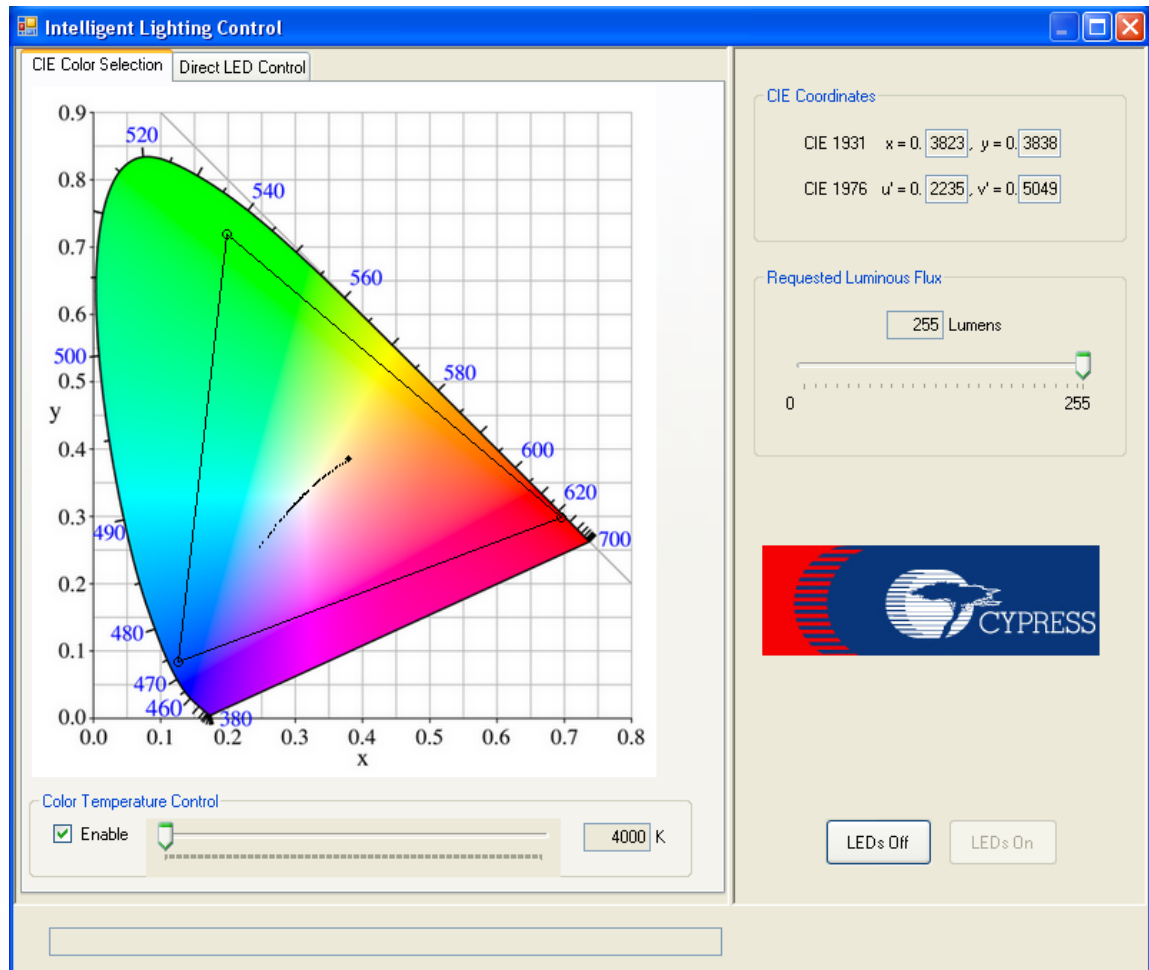
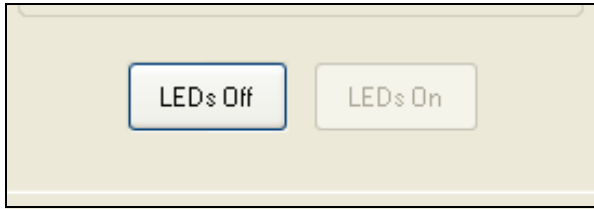


Figure 2-5. Color Temperature Slider Control



In addition to displaying colors, the application allows the user to turn the LEDs On or Off. The state of the LEDs ('on' or 'off') is based on a closed loop between the application and the RGB unit that determines the actual on/off state of the LEDs. The On/Off buttons are displayed on the bottom right portion of the application's window (Figure 2-6 on page 14). When the LEDs are off, the **LEDs On** button is enabled. Clicking on this button turns the LEDs on. If the LEDs are on, the **Off** button is enabled and clicking on this button turns the LEDs off. Regardless of the setting when the application is not connected to a board, the buttons change to show the actual state of the LEDs when the board is attached.

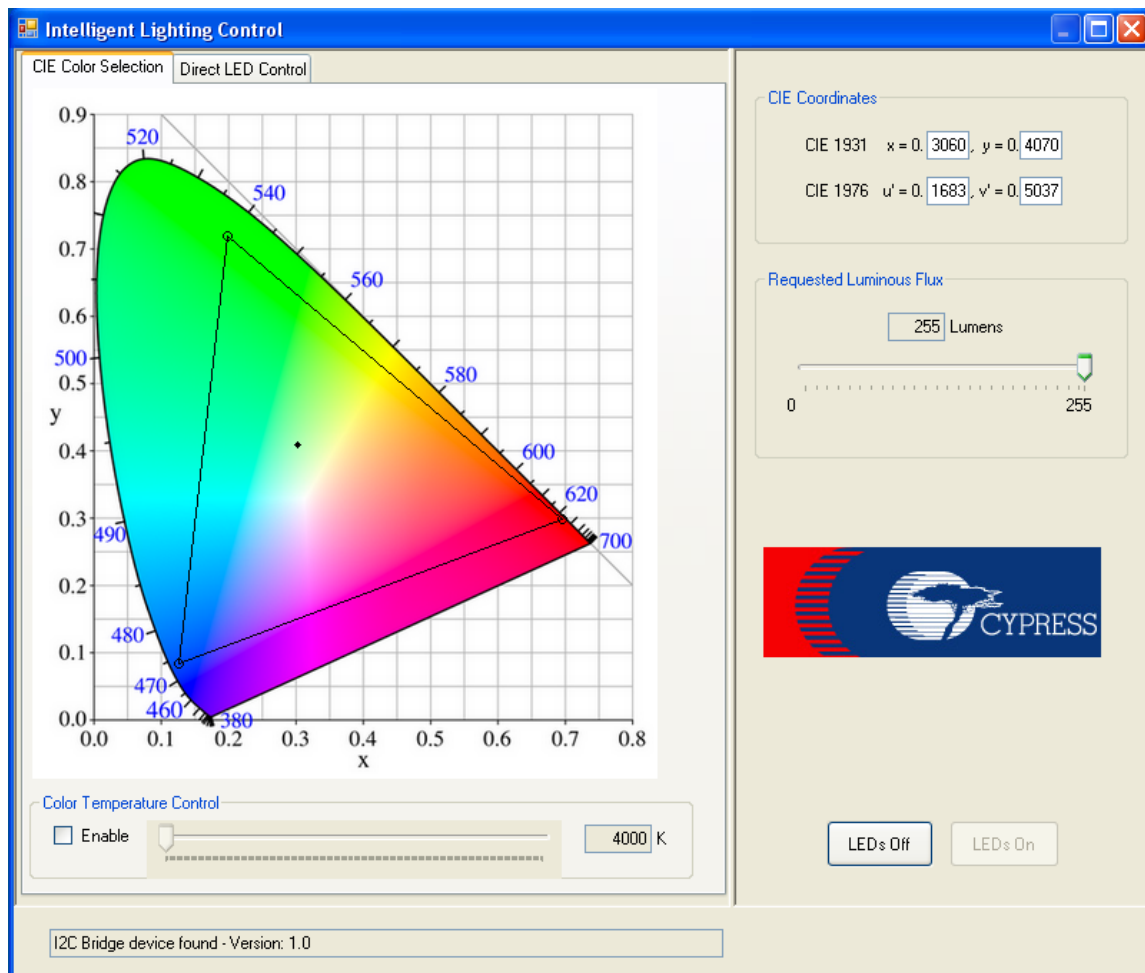
Figure 2-6. LED On/Off Controls



2.4 Status Display

Below the tabbed window is a status window, which shows the current status of the connection between the application and the RGB unit, and any error messages. If an error or change of status occurs, a message appears describing the event. The message “I2C Bridge device found – Version 1.0” is displayed in the status window in [Figure 2-7](#). The message appears for approximately five seconds and is then cleared from the status window.

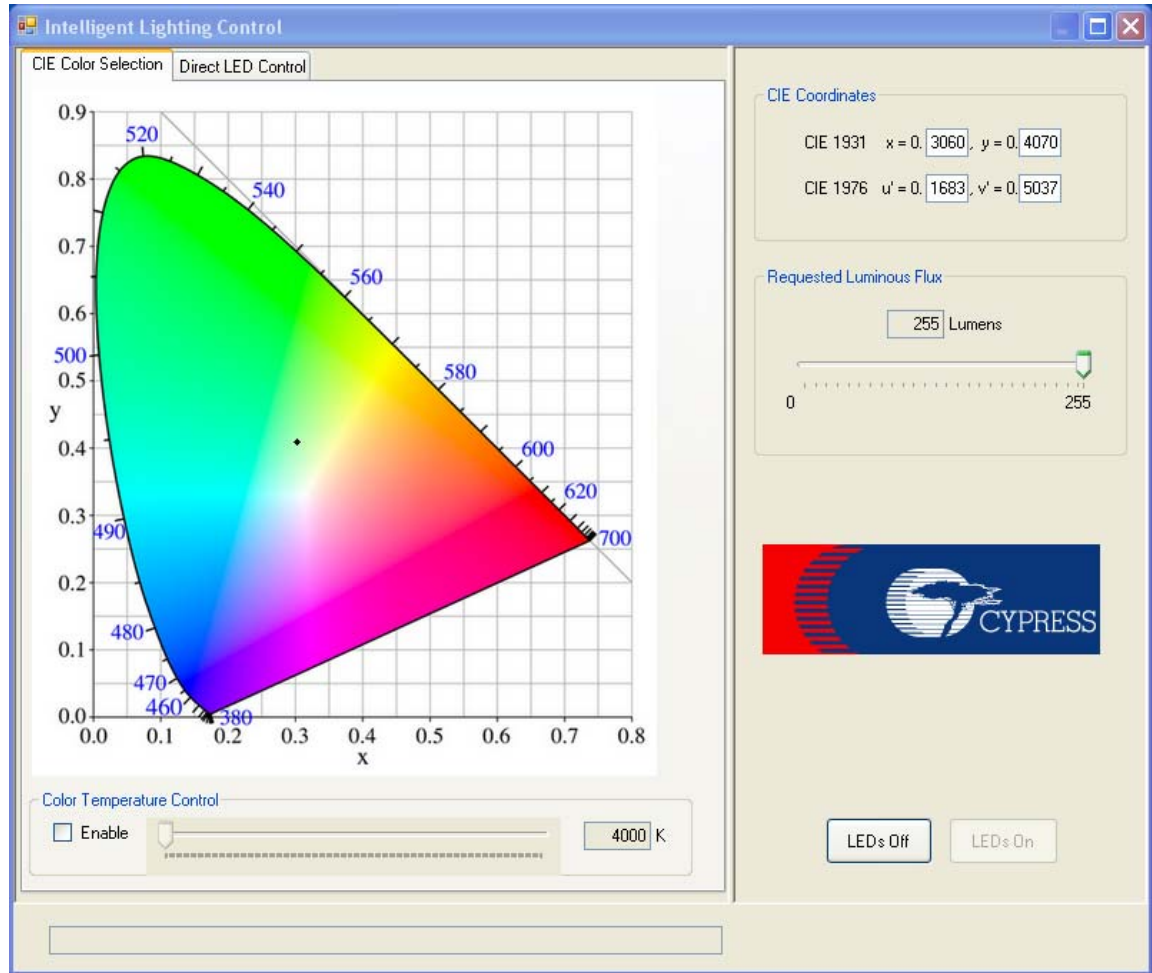
Figure 2-7. Application Displaying a Status Message



2.5 Running the Application with no RGB Unit Attached

If no RGB unit is detected, for whatever reason, the application automatically starts without any gamut (Figure 2-8). If the RGB unit is detected, the detection of the unit is indicated in the status window. When the application is run without a RGB unit attached, any point on the CIE color chart can be selected.

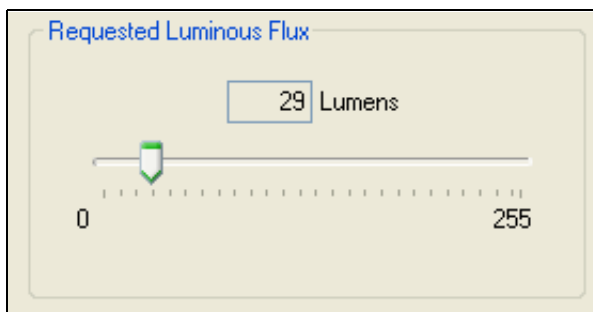
Figure 2-8. Application Without an Attached RGB Unit



2.6 LED Luminous Flux

The luminous flux of the mixed color output can be varied using the Requested Luminous Flux slider located on the right side of the application window (Figure 2-9 on page 16). The maximum total flux produced by the LEDs varies, depending upon the chosen color. For example, a neutral white can be set to a higher total flux than any of the three primary colors alone, as the color white is represented by a sum of the light output of each of the LEDs. The saturation point (the point of maximum total flux) differs for different colors. Moving the slider to a requested flux higher than the saturation point for a given color has no effect upon the light output of the LEDs as they remain at that mixed color's saturation point. Note that this slider determines the *requested* luminous flux. This requested value is usually derated by the color mixing firmware on the RGB unit. This is required to perform temperature compensation, keeping the requested color as accurate as possible.

Figure 2-9. Requested Luminous Flux Slider Control



2.7 Dynamic Update

The RGB unit has two buttons that allow the board to be demonstrated without using the RGB unit control application (see [RGB Unit Layout on page 7](#)). The button labeled ON/OFF on the RGB unit turns the LEDs (alternately) on and off. The button labeled COLOR is used to cycle between seven preset colors. At any time, the user can use the buttons on the unit to control the evaluation unit. The application checks the current state of the RGB unit once every second and automatically updates to accurately reflect the present state of the unit. If the user selects the **Direct LED Control** tab, the LEDs on the RGB unit automatically turn off.

2.8 Shutting Down the Application

The application is closed by clicking on the Windows **close box** icon 'x' in the upper right corner of the application window.

3. Color Accuracy



WARNING: HIGH BRIGHTNESS LEDs CAN CAUSE PERMANENT EYE DAMAGE!

Do not look at the LEDs if they are not covered by the protective enclosure. The LEDs illuminate at a very high intensity and can cause permanent eye damage if they are viewed without the protective enclosure.

The colors displayed by the CY3265 RGB unit are based upon average values for the variety of LEDs available for this unit. Different manufacturer's LEDs vary from one another in their color and different manufacturing cycles of a given manufacturer's LED also vary. Due to this, the colors displayed may not be accurate for the particular LEDs on your device, although every effort has been made to determine reasonable average values for the various LEDs used, you may notice accuracy variations, especially with coordinates generally corresponding to white light.

The high accuracy color capability of your RGB unit requires the unit to be calibrated. Calibration requires you to determine the precise color coordinates for each of the three LEDs used on your LED board. Such color coordinates can be obtained by using a precision color meter, such as the Minolta Chroma Meter CL-200. Less accurate, subjective color adjustment can be obtained by trial and error. The calibration values are defined in the RGB firmware. The procedures for accomplishing this is described in the following section.

3.1 Finding Calibration Values

To determine calibration values, the Intelligent Lighting Control application should be used to illuminate each LED at its maximum intensity before obtaining a calibration reading. The best way to accomplish this is to attach the CY3265-RGB unit to a PC that has the Intelligent Lighting Control application installed. Start the application and select the Direct LED Control tab. Slide the Red LED slider to 100% and make sure the Green and Blue sliders are set at 0%. Using a color meter, take a reading from the illuminated color cube. To ensure greatest accuracy, make sure there are no other light sources visible to the light meter when obtaining the reading. Record the luminosity and X, Y CIE 1931 coordinate values.

Set the Red slider to 0%, the Green slider to 100% and the Blue slider to 0%. Repeat the meter reading and record the resulting readings for the Green LED. Finally, repeat the procedure with the Blue LED set to 100% and the Red and Green set to 0%. You should have recorded nine values, three for Red, three for Green and three for Blue. These reading will be configured into the firmware as described in the next section.

3.2 Setting Primary Color Coordinates

Three parameters are defined for each of the three LEDs. These nine parameters are defined in the header file `LED_Calibration.h`. The three parameters, in the order they are defined, are *maximum lumens*, *CIE X base color coordinate* and *CIE Y base color coordinate*. The maximum lumens designates the maximum light output for the given LED. This value is a positive integer with the range 8 to 1,856. The X and Y coordinates are the CIE 1931 standard coordinates that designate the color of light generated by the LED. The settings are defined for the three LEDs assuming primary LED colors of 'red,' 'green' and 'blue,' although any three LED colors could be used, depending upon the desired color gamut. Coordinate values are represented as four-digit integers that are interpreted as four-digit fixed-point fractional values ranging from 0.0000 to 0.9999 in both the X and Y dimension. Thus, for example, the fractional X value of 0.7011 is defined with the integer value 7011.

The header is reproduced below:

```
//-----
//-----
// FILENAME: LED_Calibration.h
// Version: 1.2, Updated on 2008/04/02 at 13:00:00
// Generated by Ben Kropf
//
// File name changed to 'LED_Calibration.h' 2008/06/06
//
// DESCRIPTION: Contains all of the defines that are required in
// for defined labels in the main program. This is compatible with
// firmware that uses fixed-point math instead of floating point math.
// This necessitates all of the defines in this file to integers
// rather than decimal numbers.
//
// Update 1.2: Removed unused defines and product-specific
// parameters.
//
//-----
// Copyright (c) Cypress Semiconductor 2007. All Rights Reserved.
//-----
//-----

// Parameters for Red LED
#define R_MAX_LUMENS ( 1856 ) //7.25 * 2^8
#define R_BASE_COLOR_X ( 7011 )
#define R_BASE_COLOR_Y ( 2982 )

// Parameters for Green LED
#define G_MAX_LUMENS ( 1856 ) //7.25 * 2^8
#define G_BASE_COLOR_X ( 2003 )
#define G_BASE_COLOR_Y ( 7181 )

// Parameters for Blue LED
#define B_MAX_LUMENS ( 1856 ) //7.25 * 2^8
#define B_BASE_COLOR_X ( 1263 )
#define B_BASE_COLOR_Y ( 817 )

//End of file "LED_Calibration.h"
```

3.3 Building a new RGB firmware image

The procedure for building the new color mix firmware differs, depending upon which version of PSoC Designer is being used. Where different, the following description details the necessary steps for both *PSoC Designer 4.4* and *PSoC Designer 5.0*.

It is assumed that the reader is familiar with the opening and editing source files using one of the versions of PSoC Designer described here. If not, please refer to documentation about PSoC Designer available on <http://www.cypress.com>.

3.3.1 Saving the File

After editing the file `LED_Calibration.h` to define the desired LED parameters, save the file in one of two ways: either click on the **File** label in the menu bar and move the mouse cursor to high-

light and then click on **Save**, or click on the  icon on the Designer IDE toolbar. This step is the same for both versions of PSoC Designer.

3.3.2 Rebuilding your firmware

In PSoC Designer you can rebuild the firmware in one of two ways: either click on the **Build** label in the menu bar and move the mouse cursor to highlight and then click on the **Build** option listed. Alternatively, simply press the **[F6]** key (**[F7]** for PSoC Designer 4.4). The third option is to click on the


 icon on the toolbar (or the  icon for PSoC Designer 4.4).

3.3.3 Loading your new firmware

Make sure the MiniProg is attached to your PC using a USB cable before performing this step. Further, connect the MiniProg to the ISSP header on your RGB unit. To access this header you have to remove the top cover of the RGB unit's enclosure by first removing the three screws holding the cover on. Make sure PSoC Programmer has the focus (that is, the active program) before proceeding.

3.3.4 Using PSoC Designer 4.4

You can load your new firmware directly from your PSoC Designer session in one of two ways: Select the **Tools** option from the menubar. Move your mouse cursor over the **Program Part** option

and click. Alternatively, click on the  icon on the toolbar. With either option, Designer starts the application *PSoC Programmer*. The correct programming options should automatically be selected by PSoC Designer. You can verify this by examining the four status boxes in the bottom right portion of the PSoC Programmer window. If all of these boxes are green, your part is ready to be programmed. On the toolbar of PSoC Programmer, click on the button labeled **Program**. Alternatively, click on the label **Programming** on the menu bar and then select and click on the label **Program** (or simply press the **[F5]** key).

After selecting the program option, the status of the firmware download is displayed in the status window of PSoC Programmer. Programming proceeds followed by a verification that the firmware has been loaded correctly. Finally, a checksum is performed on the downloaded firmware. When the process completes without error, PSoC Programmer issues a *Programming Succeeded* message, followed by the completion time. You have successfully programmed your RGB unit. If this procedure fails for any reason, refer to the documentation available for PSoC Programmer on the web site <http://cypress.com> for a complete description about using PSoC Programmer.

3.3.5 Using PSoC Designer 5.0

To load your firmware using PSoC Designer 5.0 click on the **Program** label in the menu bar. Move your mouse cursor to the **PSoC Programmer** selection and click. PSoC programmer starts and works in the same fashion described above for PSoC Designer 4.4. At the time of this writing, there is no default toolbar icon available in Designer 5.0.

Looking for pricing, stock, or lifecycle information?

Click below to explore more details on WIN SOURCE:

 [View CY3265C-RGB on WIN SOURCE](#)

 [Infineon Technologies](#) Information

Optimize Your Supply Chain with WIN SOURCE Solutions

-  Global Sourcing Solution
-  Obsolete Management
-  Cost Control Management
-  Shortage Management
-  Alternative Solution
-  Excess Inventory Management