



THE DATASHEET OF CY3235-PROXDET



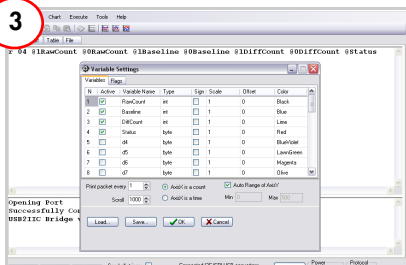
CY2325 CAPSENSE® PROXIMITY DETECTION DEMONSTRATION KIT QUICK START GUIDE



Install Software

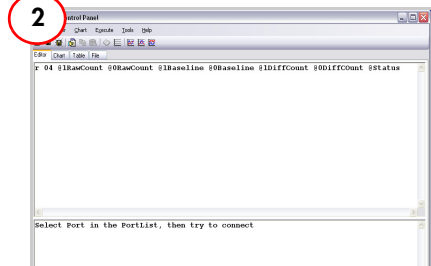
1. Download and install PSoC Designer from <http://www.cypress.com/go/psocdesigner>.
2. Download I2USB_Bridge_ConfigFiles.Zip from <http://www.cypress.com/go/CY2325-ProxDet>.

Note: See the user guide for details.



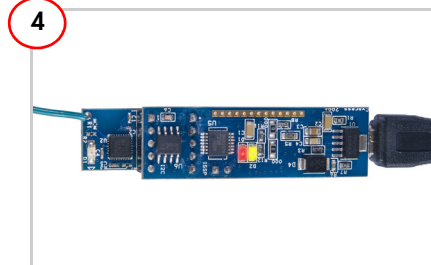
Configure Variable Settings

1. Open Chart menu and select Variable Settings.
2. Click on the Load button; navigate to and select I2USB_Bridge_ConfigFiles\ProxDet.ini; click OK.



Run Bridge Control Panel

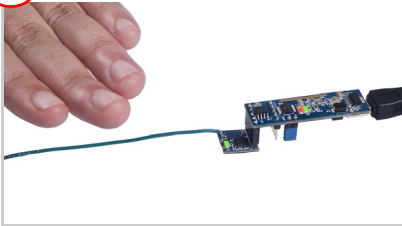
1. Select Start Menu > All Programs > Cypress > Bridge Control Panel 1.3 > Bridge Control Panel 1.3.
2. Open File menu and select Open File; navigate to and select I2USB_Bridge_ConfigFiles\ProxDet.iic.



Power CY2325-PROXDET Kit

1. Connect I2USB Bridge board to the PC using the USB cable.
2. Connect I2USB Bridge board to the J1 connector on CY2325-PROXDET board.
3. In the Bridge Control Panel, select +5.0 V power and click on Toggle Power. Observe that LED D1 (red) glows to indicate that the kit is powered.

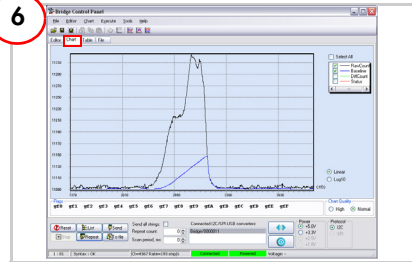
5



Evaluate CapSense Proximity Sensing

1. Move your hand near the sensing wire; LED D1 (green) in CY3235-ProxDet board glows.
2. Move your hand away from the sensing wire; LED D1 turns off.

6



Monitor CapSense Data

1. Click on Repeat to execute the read command repeatedly.
2. Click on the Chart tab to get the CapSense data graph.
3. Clear DiffCount and Status to monitor only RawCount and Baseline graphs. RawCount increases when the hand is near the sensing wire and decreases when moved away.
4. Experiment with DiffCount and Status graphs.

Connector Details



- Connector J1
- Pin 1 – VDD
- Pin 2 – GND
- Pin 3 – XRES
- Pin 4 – SCL
- Pin 5 – SDA

The CY3235-ProxDet kit is shipped with a code example [Example_CY3235_CSD_Prox_Detector.zip] programmed into the device. Download this example from <http://www.cypress.com/go/CY3235-ProxDet>. See the kit guide for details.

For the latest information about this kit, visit
<http://www.cypress.com/go/CY3235-ProxDet>



Looking for pricing, stock, or lifecycle information

Click below to explore more details on WIN SOURCE:

-  [View CY3235-PROXDET on WIN SOURCE](#)
-  [Infineon Technologies](#) Information

Optimize Your Supply Chain with WIN SOURCE

-  Global Sourcing Solution
-  Obsolete Management
-  Cost Control Management
-  Shortage Management
-  Alternative Solution
-  Excess Inventory Management