

The Environmental Sensing Kit requires the CY3271 Kit for operation. This quick start guide assumes you are familiar with the CY3271, its operation, and programming of PSoC devices. If not, refer to the users guide on the CD.

1



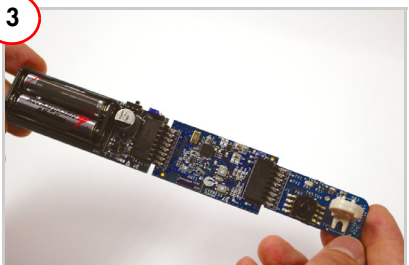
Install all software in the CY3271 kit.

2



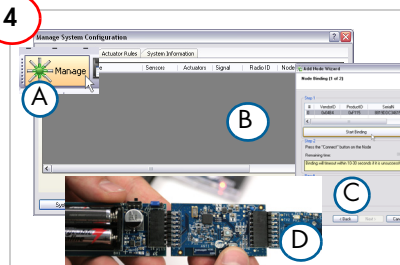
Program the RF Expansion board with *RF_I2C_Bridge.hex* from the CD.

3



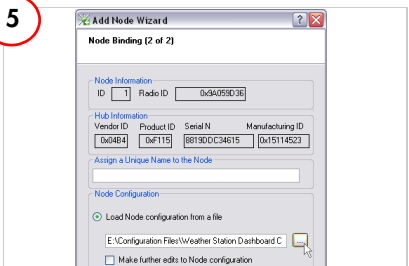
Connect the battery board, RF Expansion board, and the Weather Station board.

4



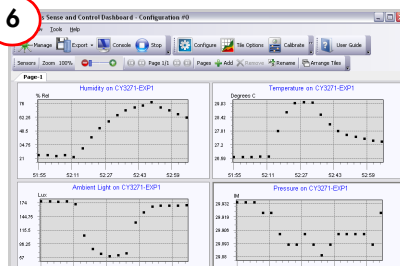
Launch Sense and Control Dashboard and 'bind' the RF Expansion board.

5



Click 'Load Node configuration from a file' and select *Weather_Station_Dashboard_Configuration.xml* from the CD.

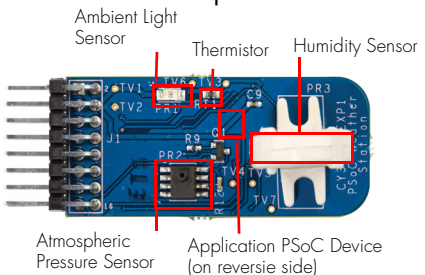
6



Monitor, chart, and record data from all sensors. See the user guide for other CY3271 projects.

CY3271-EXP1 EXPANSION KIT QUICK START GUIDE

Weather Station Expansion Board

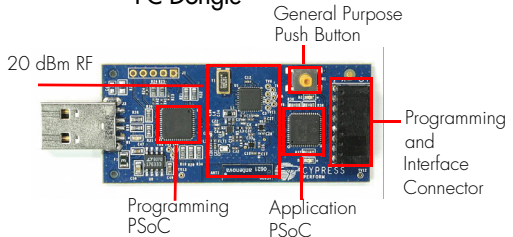


Pigtail Thermistor Expansion Board

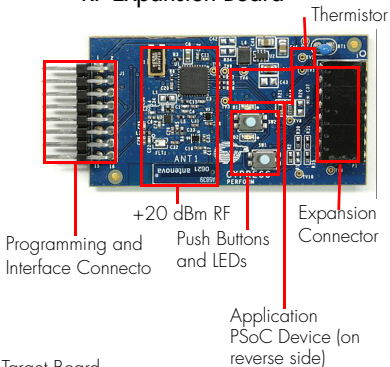


CY3271 Hardware (Required for Operation)

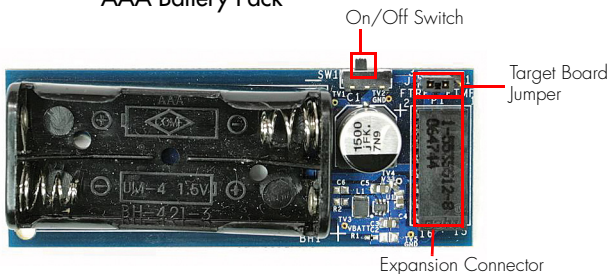
PC Dongle



RF Expansion Board



AAA Battery Pack



For the latest information about this kit, visit www.cypress.com/go/CY3271-EXP1









Looking for pricing, stock, or lifecycle information

Click below to explore more details on WIN SOURCE:

 [View CY3271-EXP1 on WIN SOURCE](#)

 [Infineon Technologies](#) Information

Optimize Your Supply Chain with WIN SOURCE

-  Global Sourcing Solution
-  Obsolete Management
-  Cost Control Management
-  Shortage Management
-  Alternative Solution
-  Excess Inventory Management