



**THE DATASHEET OF  
MPC5744P-257DS**





# Qorivva MPC5744P Evaluation Board 257BGA Expansion Board User's Guide

## 1 Introduction

This document describes the Qorivva MPC5744P evaluation board (EVB) expansion board for the 257BGA (part number MPC5744PE257DC). The EVB is targeted at providing a platform for the evaluation and development of the MPC5744P automotive MCU, facilitating hardware and software development as well as debugging. Settings for switches, jumpers, LEDs, and push-buttons are shown for basic operation of the prototype version of the EVB.

## 2 Features

The expansion board provides the following primary features listed below:

- Standalone operation or use with the optional MPC5746MMB main board
- Socketed MPC5744P in 257-pin MAPBGA package
- Power options

### Contents

1	Introduction	1
2	Features	1
3	Modular concept	2
3.1	Methods of operation	3
4	EVB configuration	3
4.1	Power source	3
4.2	VPP_TEST	7
4.3	Boot configuration	8
4.4	Clocks	8
4.5	I/O connectivity	10
4.6	Main board I/O power	13
4.7	PwrSBC settings	13
5	Reset switches	15
6	Connectors	15
6.1	JTAG connector	15
6.2	Nexus parallel trace connector	16
6.3	Nexus Aurora trace connector	16
6.4	SIPI connector	17
6.5	Main board interface	17
7	LEDs	21
8	Test points	22
9	Port pin to main board mapping	23
10	Diagrams	29

This document is preliminary and is subject to change without notice.

## Modular concept

- Power supplied via the two interface connectors when using the EVB with the optional MPC5746MMB main board
- Power supplied via terminal block when using the EVB in standalone configuration
- Power supplied by the multi-output MC33907 PwrSBC power supply when using the EVB in standalone configuration
- Debug and trace
  - JTAG connector
  - Nexus parallel connector
  - Nexus Aurora connector
- Clocks
  - 40 MHz crystal
  - 8 MHz crystal oscillator
  - SMA connector for external clock
- I/O connectivity
  - Access to port pins when using the EVB with the optional MPC5746MMB main board
  - Access to SCI, CAN, and LIN physical interfaces when using the EVB with the optional MPC5746MMB main board
  - On-board CAN and LIN interfaces
  - SIPI connector
- Switches
  - Main power on/off
  - Power-on reset
  - Reset
- LEDs for power indication
- Test points

## 3 Modular concept

The MPC5744PE257DC is part of a modular EVB hardware system that consists of:

- A common main board that provides power and access to common communication interfaces and the MCU I/O port pins. MPC5744PE257DC is compatible with the MPC5746MMB main board.
- A package-specific expansion board to support available package types of the MPC5744P. The MPC5744PE257DC supports the 257-pin MAPBGA package.

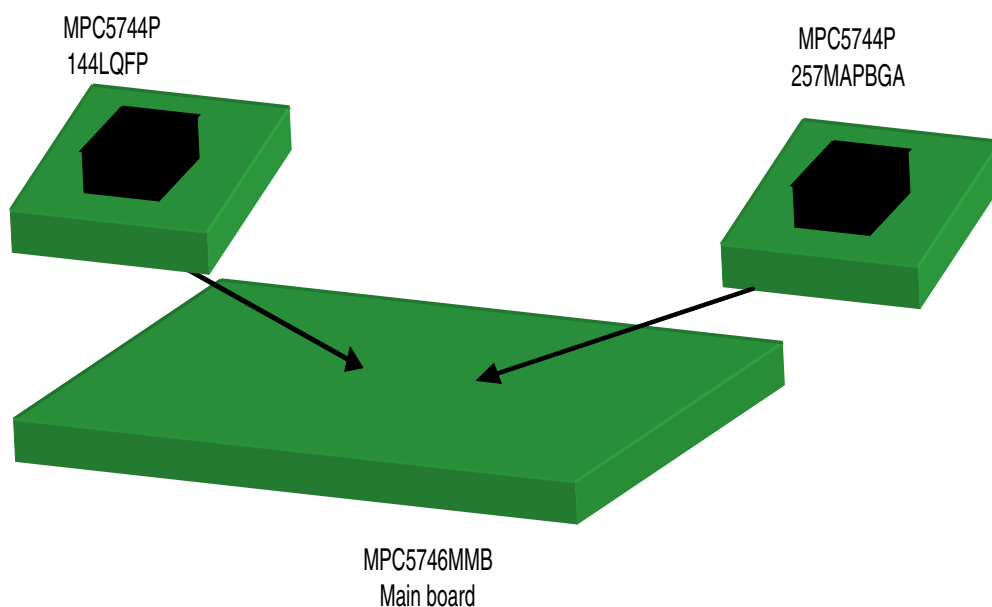


Figure 1. MPC5744P expansion board and main board system

### 3.1 Methods of operation

Power to the expansion board is supplied via three options:

1. The MPC5746MMB main board generates the 5 V/3.3 V/1.25 V supplies to the expansion board via the interface connectors.
2. In standalone configuration, external 5 V/3.3 V/1.25 V supplies are provided to the expansion board via the terminal block.
3. In standalone configuration, a single 12 V supply is input to the expansion board via the 2.1 mm power connector. The PwrSBC generates the 5 V/3.3 V high-voltage power. The NPN transistor drives the core supply using internal regulation<sup>1</sup>.

## 4 EVB configuration

This section provides information on how to configure the jumper settings on the EVB. Default settings are marked as such. Figure 5 provides a top view of the EVB and shows the location of each jumper.

### 4.1 Power source

The default jumper settings are configured for using the EVB with the MPC5746MMB main board as shown in Figure 2. Power is supplied from the main board to the EVB via the two interface connectors.

1. Not all expansion boards include the PwrSBC device. Check whether the PwrSBC (U2) is installed on the expansion board to determine whether standalone operation using a single 12 V supply can be used. Refer to Figure 5 for the location of U2.

## EVb configuration

The EVB can also operate as a standalone device, in which power can be supplied from an external power source or from the on-board PwrSBC device.

Table 1 summarizes the switch settings for the three power options.

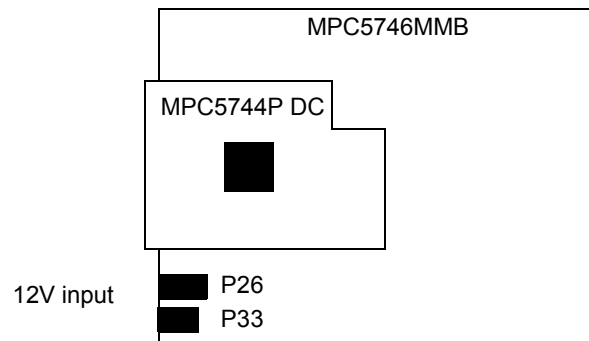
**Table 1. Switch settings — power options**

Jumper	Setting	Description
J3	Choose one: 2-4 ON 3-4 ON 4-6 ON	<b>High voltage I/O power</b> VDD_HV_IO — 3.3 V from PwrSBC VDD_HV_IO — 3.3 V from main board (default) VDD_HV_IO — 3.3 V from external supply
J2	Choose one: 2-4 ON 3-4 ON 4-6 ON	<b>High voltage flash power</b> VDD_HV_FLA0 — 3.3 V from PwrSBC VDD_HV_FLA0 — 3.3 V from main board (default) VDD_HV_FLA0 — 3.3 V from external supply
J20	Choose one: 2-4 ON 3-4 ON 4-6 ON	<b>High voltage oscillator power</b> VDD_HV_OSC0 — 3.3 V from PwrSBC VDD_HV_OSC0 — 3.3 V from main board (default) VDD_HV_OSC0 — 3.3 V from external supply
J21	Choose one: 2-4 ON 3-4 ON 7-8 ON 6-8 ON 8-10 ON	<b>High voltage ADC0/2 reference</b> VDD_HV_ADR0 — from PwrSBC, see J24 VDD_HV_ADR0 — 3.3 V from main board (default) VDD_HV_ADR0 — 5 V from main board VDD_HV_ADR0 — 3.3 V from external supply VDD_HV_ADR0 — 5 V from external supply
J22	Choose one: 2-4 ON 3-4 ON 7-8 ON 6-8 ON 8-10 ON	<b>High voltage ADC1/3 reference</b> VDD_HV_ADR1 — from PwrSBC, see J24 VDD_HV_ADR1 — 3.3 V from main board (default) VDD_HV_ADR1 — 5 V from main board VDD_HV_ADR1 — 3.3 V from external supply VDD_HV_ADR1 — 5 V from external supply
J25	Choose one: 2-4 ON 1-3 ON	<b>5 V/3.3 V select for ADC reference</b> VDD_HV_ADR0 and VDD_HV_ADR1 — 3.3 V from PwrSBC (default) VDD_HV_ADR0 and VDD_HV_ADR1 — 5 V from PwrSBC
J23	Choose one: 2-4 ON 3-4 ON 4-6 ON	<b>High voltage ADC power</b> VDD_HV_ADV0/1 — 3.3 V from PwrSBC VDD_HV_ADV0/1 — 3.3 V from main board (default) VDD_HV_ADV0/1 — 3.3 V from external supply
J24	Choose one: 2-4 ON 3-4 ON 4-6 ON	<b>High voltage PMU supply</b> VDD_HV_PMU — 3.3 V from PwrSBC VDD_HV_PMU — 3.3 V from main board (default) VDD_HV_PMU — 3.3 V from external supply
J18	Choose one: 2-4 ON 3-4 ON 4-6 ON	<b>Low voltage supply</b> VDD_LV_CORE — use NPN transistor, internal regulation VDD_LV_CORE — 1.25 V from main board, external regulation (default) VDD_LV_CORE — 1.25 V from external supply, external regulation

### 4.1.1 Option 1: Power from the MPC5746MMB main board

The default configuration for the EVB power source is the main board.

In this configuration, the EVB is connected to the main board. The main board must be supplied with a 12 V input via the 2.1 mm barrel connector (P26) or the terminal block (P33). Voltage regulators on the main board provide 5 V, 3.3 V, and 1.25 V to the MCU via the high-density expansion connectors. The MCU core supply can be externally regulated or internally regulated using the NPN transistor.



**Figure 2. Power from the main board**

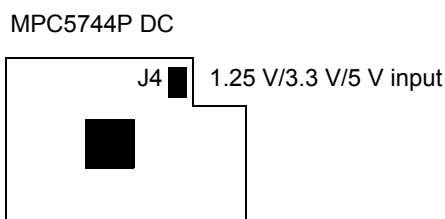
Table 2 shows the switch settings when power is sourced from the main board.

**Table 2. Switch settings — power from main board**

Jumper	Setting	Description
J3	3–4 ON	VDD_HV_IO — 3.3 V from main board (default)
J2	3–4 ON	VDD_HV_FLA0 — 3.3 V from main board (default)
J20	3–4 ON	VDD_HV_OSC0 — 3.3 V from main board (default)
J21	Choose one: 3–4 ON 7–8 ON	VDD_HV_ADR0 — 3.3 V from main board (default) VDD_HV_ADR0 — 5 V from main board
J22	Choose one: 3–4 ON 7–8 ON	VDD_HV_ADR1 — 3.3 V from main board (default) VDD_HV_ADR1 — 5 V from main board
J23	3–4 ON	VDD_HV_ADV0/1 — 3.3 V from main board (default)
J24	3–4 ON	VDD_HV_PMU — 3.3 V from main board (default)
J18	Choose one: 2–4 ON 3–4 ON	VDD_LV_CORE — use NPN transistor, internal regulation VDD_LV_CORE — 1.25 V from main board, external regulation (default)

### 4.1.2 Option 2: Power from external supply

This configuration allows the EVB to operate in standalone configuration using external power supplies, as shown in [Figure 3](#). Power to the EVB is supplied via the terminal block J4 as shown in [Table 4](#). The core supply can be externally regulated or internally regulated using the NPN transistor.



**Figure 3. Power from external supplies**

[Table 3](#) shows the switch settings when power is sourced externally via the terminal block.

**Table 3. Switch settings — power from external supply**

Jumper	Setting	Description
J3	4–6 ON	VDD_HV_IO — 3.3 V from external supply
J2	4–6 ON	VDD_HV_FLA0 — 3.3 V from external supply
J20	4–6 ON	VDD_HV_OSC0 — 3.3 V from external supply
J21	Choose one: 6–8 ON 8–10 ON	VDD_HV_ADR0 — 3.3 V from external supply VDD_HV_ADR0 — 5 V from external supply
J22	Choose one: 6–8 ON 8–10 ON	VDD_HV_ADR1 — 3.3 V from external supply VDD_HV_ADR1 — 5 V from external supply
J23	4–6 ON	VDD_HV_ADV0/1 — 3.3 V from external supply
J24	4–6 ON	VDD_HV_PMU — 3.3 V from external supply
J18	Choose one: 2–4 ON 4–6 ON	VDD_LV_CORE — use NPN transistor, internal regulation VDD_LV_CORE — 1.25 V from external supply, external regulation

**Table 4. External power input**

J4	Description
Pin 1	1.25 V
Pin 2	3.3 V
Pin 3	5 V
Pin 4	GND

### 4.1.3 Option 3: Power from PwrSBC

This configuration allows the EVB to operate in standalone configuration using the MC33907 PwrSBC device on the EVB as shown in Figure 4. The PwrSBC is a multi-output power supply with built-in CAN and LIN transceivers. It generates the 5 V and 3.3 V power to the MCU. In this configuration, the core supply is regulated internally using the NPN transistor. Power to the EVB is supplied via the 2.1 mm power connector (P2)

Table 5 shows the switch settings when power is sourced from the PwrSBC.

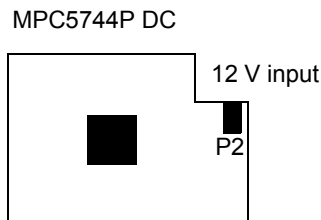


Figure 4. Power from the PwrSBC

Table 5. Switch settings — power from PwrSBC

Jumper	Setting	Description
J3	2–4 ON	VDD_HV_IO — 3.3 V from PwrSBC
J2	2–4 ON	VDD_HV_FLA0 — 3.3 V from PwrSBC
J20	2–4 ON	VDD_HV_OSC0 — 3.3 V from PwrSBC
J21	2–4 ON	VDD_HV_ADR0 — from PwrSBC, see J25
J22	2–4 ON	VDD_HV_ADR1 — from PwrSBC, see J25
J25	Choose one: 2–4 ON 1–3 ON	VDD_HV_ADR0 and VDD_HV_ADR1 — 3.3 V from PwrSBC (default) VDD_HV_ADR0 and VDD_HV_ADR1 — 5 V from PwrSBC
J23	Choose one: 2–4 ON	VDD_HV_ADV0/1 — 3.3 V from PwrSBC
J24	Choose one: 2–4 ON	VDD_HV_PMU — 3.3 V from PwrSBC
J18	2–4 ON	VDD_LV_CORE — use NPN transistor, internal regulation

## 4.2 VPP\_TEST

The VPP\_TEST switch (J6) must be pulled low to allow Debug mode to be entered.

**Table 6. Switch settings —VPP\_TEST**

J6	Description
Choose one: 1-2 ON 2-3 ON	Pull VPP_TEST high Pull VPP_TEST low (default)

### 4.3 Boot configuration

Table 7 shows the J7 switch settings to configure the boot configuration. When booting from UART or CAN, connect the expansion board to the main board and use the interface connectors described below.

**Table 7. Switch settings — boot configuration**

J7	Description	
1-2 ON 3-4 ON 5-6 ON	FAB:ABS2:ABS1 = 000 (default)	Normal boot
1-2 OFF 3-4 ON 5-6 ON	FAB:ABS2:ABS1 =100	Boot from UART Connect expansion board to main board. Use main board RS-232 connector J19.
1-2 OFF 3-4 ON 5-6 OFF	FAB:ABS2:ABS1 =10	Boot from CAN Connect expansion board to main board. Use main board CAN connector J5.

### 4.4 Clocks

The EVB provides the following options for clock sources:

- Default: 40 MHz crystal (Y201)
- 8 MHz crystal oscillator (Y200)
- External clock input via SMA connector (J12)

The default clock source is the 40 MHz crystal. Changing the clock source to the 8 MHz crystal oscillator or the external clock input requires configuring jumpers as shown in Table 8.

**Table 8. Clock source configuration**

Clock Source	Configuration
40 MHz crystal	JP200 1-2 OFF (default) JP201 1-2 OFF (default) JP202 1-2 ON (default) JP203 1-2 OFF (default) JP204 1-2 OFF (default) J13 1-2 ON (default)

**Table 8. Clock source configuration (continued)**

Clock Source	Configuration
8 MHz oscillator	JP200 1-2 OFF (default) JP201 1-2 ON JP202 1-2 OFF JP203 1-2 OFF (default) JP204 1-2 ON J13 1-2 ON (default)
External clock	JP200 1-2 ON JP201 1-2 ON JP202 1-2 OFF JP203 1-2 ON JP204 1-2 OFF (default) J13 1-2 OFF

Table 9 shows the configuration to enable the termination of EXTAL to GND. This jumper should be connected when using the external clock via the SMA connector.

**Table 9. EXTAL termination**

JP200	Description
1-2 ON	50 ohm termination of EXTAL to GND enabled
1-2 OFF	50 ohm termination of EXTAL to GND disabled (default)

Table 10 shows the configuration to enable the XTAL connection to GND. This jumper should be connected when using the 8 MHz oscillator or the external clock via SMA connector.

**Table 10. XTAL to GND connection**

JP201	Description
1-2 ON	XTAL to GND connection enabled
1-2 OFF	XTAL to GND connection disabled (default)

Table 11 shows the configuration to enable the external clock to connect to EXTAL.

**Table 11. 40 MHz crystal output enable/disable**

JP202	Description
1-2 ON	40 MHz crystal output enabled (default)
1-2 OFF	40 MHz crystal output disabled

Table 12 shows the configuration to enable the external clock to connect to EXTAL.

**Table 12. External clock enable/disable**

JP203	Description
1-2 ON	External clock via SMA connector output enabled
1-2 OFF	External clock via SMA connector output disabled (default)

Table 13 shows the configuration to enable the 8 MHz oscillator output to connect to EXTAL.

**Table 13. 8 MHz oscillator output enable/disable**

JP204	Description
1-2 ON	8 MHz oscillator output enabled
1-2 OFF	8 MHz oscillator output disabled (default)

Table 14 shows the configuration to enable the 8 MHz oscillator.

**Table 14. 8 MHz oscillator enable/disable**

J13	Description
1-2 ON	8 MHz oscillator disabled (default)
1-2 OFF	8 MHz oscillator enabled

## 4.5 I/O connectivity

Some of the MCU's I/Os are routed to the main board and the PwrSBC.

### 4.5.1 DSPI0 connectivity

Jumper J19 allows the DSPI0 signals to be routed to the main board or to the PwrSBC.

When the expansion board is powered by the main board, J19 should be configured to connect the DSPI0 signals to the main board. The DSPI0 signals can be accessed on the main board from the port pin connectors as shown in Table 32.

When the expansion board is powered by the PwrSBC, J19 should be configured to connect the DSPI0 signals to the PwrSBC to allow communication between the MCU and the PwrSBC via SPI.

Table 15 shows the J19 switch settings.

**Table 15. Switch settings — DSPI and ADC0 connectivity**

J19	Description
Choose one:	<b>DSPI0 SOUT connectivity</b>
1-2 ON	Connect DSPI0 SOUT (PC6) to PwrSBC
2-3 ON	Connect DSPI0 SOUT (PC6) to main board (default)

**Table 15. Switch settings — DSPI0 and ADC0 connectivity (continued)**

J19	Description
Choose one: 4–5 ON 5–6 ON	<b>DSPI0 SIN connectivity</b> Connect DSPI0 SIN (PC7) to PwrSBC Connect DSPI0 SIN (PC7) to main board (default)
Choose one: 7–8 ON 8–9 ON	<b>DSPI0 SCK connectivity</b> Connect DSPI0 SCK (PC5) to PwrSBC Connect DSPI0 SCK (PC5) to main board (default)
Choose one: 10–11 ON 11–12 ON	<b>DSPI0 CS0 connectivity</b> Connect DSPI0 CS0 (PC4) to PwrSBC Connect DSPI0 CS0 (PC4) to main board (default)

## 4.5.2 FlexCAN\_0 connectivity

Jumper J17 allows the FlexCAN\_0 TXD/RXD (PB0/PB1) signals to be routed to the main board or to the PwrSBC.

When the EVB is powered by the main board, J17 should be configured to connect to the CAN interface of the main board. The FlexCAN\_0 signals are connected to the main board CAN transceiver that is accessed via the J5 DB9 connector on the main board. The FlexCAN\_0 signals can be accessed on the main board from the port pin connectors as shown in [Table 32](#).

When the EVB is powered by the PwrSBC, J17 should be configured to connect the FlexCAN\_0 TXD/RXD (PB0/PB1) signals to the PwrSBC as shown in [Table 16](#). The PwrSBC's built-in CAN transceiver connects to the J8 DB9 interface connector on the expansion board.

[Table 16](#) shows the switch settings for J17.

**Table 16. Switch settings — CAN0 and LIN0 connectivity**

J17	Description
Choose one: 4–5 ON  5–6 ON	<b>FlexCAN0_TXD Connectivity</b> Connect FlexCAN_0 TXD (PB0) to PwrSBC. Use J8 DB9 connector on the expansion board.  Connect FlexCAN_0 TXD (PB0) to main board. Use J5 DB9 connector on main board. (default)
Choose one: 1–2 ON  2–3 ON	<b>FlexCAN0_RXD Connectivity</b> Connect FlexCAN_0 RXD (PB1) to PwrSBC. Use J8 DB9 connector on the expansion board.  Connect FlexCAN_0 RXD (PB1) to main board. Use J5 DB9 connector on main board. (default)
Choose one: 10–11 ON  11–12 ON	<b>LINFlexD_0 TXD Connectivity</b> Connect LINFlexD_0 TXD (PB2) to PwrSBC. Use J15 Molex connector on the expansion board.  Connect LINFlexD_0 TXD (PB2) to main board. Use J19 DB9 connector on the main board. (default)

**Table 16. Switch settings — CAN0 and LIN0 connectivity (continued)**

J17	Description
Choose one: 7–8 ON	<b>LINFlexD_0 RXD Connectivity</b> Connect LINFlexD_0 RXD (PB3) to PwrSBC. Use J15 Molex connector on the expansion board.
8–9 ON	Connect LINFlexD_0 RXD (PB3) to main board. Use J19 DB9 connector on the main board. (default)

### 4.5.3 LINFlexD\_0 connectivity

Jumper J17 allows the LINFlexD\_0 TXD/RXD (PB2/PB3) signals to be routed to the main board or the PwrSBC.

When the EVB is powered by the main board, J17 should be configured to connect to the LIN interface on the main board. The LINFlexD\_0 signals are connected to the main board eSCI/RS-232 transceiver that is accessed via the J19 DB9 connector on the main board. The LINFlexD\_0 signals can be accessed on the main board from the port pin connectors as shown in [Table 32](#).

When the EVB is powered by the PwrSBC, J17 should be configured to connect the LINFlexD\_0 signals to the PwrSBC as shown in [Table 16](#). The PwrSBC’s built-in LIN transceiver connects to the J16 Molex connector on the expansion board.

[Table 16](#) shows the switch settings for J17.

### 4.5.4 FlexCAN\_1 connectivity

The FlexCAN\_1 TXD/RXD (PA14/PA15) signals are routed to the main board via the interface connectors. The FlexCAN\_1 signals are connected to the main board CAN transceiver that is accessed via the J6 DB9 connector on the main board.

### 4.5.5 LINFlexD\_1 connectivity

The LINFlexD\_1 TXD/RXD (PF14/PF15) signals are routed to the main board via the interface connectors. The LINFlexD\_1 signals are connected to the main board LIN transceiver that is accessed via the J4 Molex connector on the main board. The LINFlexD\_1 signals can be accessed on the main board from the port pin connectors as shown in [Table 32](#).

### 4.5.6 FlexRay\_A connectivity

The FlexRay\_A TX/RX/TXEN (PD3/PD2/PD4) signals are routed to the main board via the interface connectors. The FlexRay\_A signals are connected to the main board FlexRay transceiver that is accessed via the J2 DB9 connector on the main board.

## 4.5.7 FlexRay\_B connectivity

The FlexRay\_B TX/RX/TXEN (PD0/PD1/PC15) signals are routed to the main board via the interface connectors. The FlexRay\_B signals are connected to the main board FlexRay transceiver that is accessed via the J2 DB9 connector on the main board.

## 4.5.8 Ethernet Connectivity

The Ethernet signals are routed to the main board via the interface connectors. The Ethernet signals connect to the 10/100 Mbps PHY transceiver on the main board via the J7 RJ45 connector.

## 4.6 Main board I/O power

Jumper J14 on the EVB selects between 3.3 V and 5 V for power to the main board transceivers. The main board transceivers are powered by VDD\_HV\_IO\_MAIN. The default power to VDD\_HV\_IO\_MAIN is 3.3 V.

**Table 17. Switch settings — main board VDD\_HV\_IO\_MAIN**

J14	Description
Choose one: 1–2 ON 2–3 ON	VDD_HV_IO_MAIN is 5 V VDD_HV_IO_MAIN is 3.3 V (default)

## 4.7 PwrSBC settings

This section includes settings related to the PwrSBC. Jumper settings in this section have no effect when the EVB is powered by the main board or by external supplies. These settings only apply when the EVB is powered by the PwrSBC.

### 4.7.1 CAN termination

When the CAN interface on the expansion board is used, jumper J8 provides termination resistors to the CANH and CANL pins of the PwrSBC transceiver.

Table 18 shows the J8 switch settings to enable or disable the PwrSBC CAN termination resistors.

**Table 18. Switch settings — PwrSBC CAN termination resistors**

J8	Description
1–3 ON 1–3 OFF	Enable PwrSBC CANL termination resistor (default) Disable PwrSBC CANL termination resistor
2–4 ON 2–4 OFF	Enable PwrSBC CANH termination resistor (default) Disable PwrSBC CANH termination resistor

## 4.7.2 LIN master/slave configuration

Table 19 shows the J15 switch settings to configure the PwrSBC LIN interface in master or slave configuration.

**Table 19. Switch settings —PwrSBC LIN master/slave configuration**

J15	Description
1–2 ON	PwrSBC LIN is in master configuration (default)
1–2 OFF	PwrSBC LIN is in slave configuration

## 4.7.3 NMI\_B and RESET\_B

Jumper J1 allows the MCU’s NMI\_B and RESET\_B signals to be routed to the PwrSBC. Table 20 shows the J1 switch settings.

**Table 20. Switch settings — NMI\_B and RESET\_B connectivity**

J1	Description
1–2 ON	Connect NMI_B to PwrSBC
1–2 OFF	Do not connect NMI_B to PwrSBC (default)
3–4 ON	Connect RESET_B to PwrSBC
3–4 OFF	Do not connect RESET_B to PwrSBC (default)

## 4.7.4 PwrSBC IO\_0:5

Table 21 shows the J9 jumper which allows access to the PwrSBC IO\_x pins. The IO\_x pins are inputs to the PwrSBC for monitoring various signals.

J9 also provides connection between the FCCU\_F[0:1] and PwrSBC IO\_2:3 pins to allow the PwrSBC to monitor the status of the MCU’s FCCU error output pins.

**Table 21. Switch settings —PwrSBC IO\_0:5**

J9	Description
2	PwrSBC IO_0
4	PwrSBC IO_1
6	PwrSBC IO_2
8	PwrSBC IO_3
10	PwrSBC IO_4
12	PwrSBC IO_5
5–6 ON	Connect FCCU_F0 to PwrSBC IO_2
5–6 OFF	Do not connect FCCU_F0 to PwrSBC IO_2 (default)
7–8 ON	Connect FCCU_F1 to PwrSBC IO_3
7–8 OFF	Do not connect FCCU_F1 to PwrSBC IO_3 (default)

## 5 Reset switches

The push-button switches (SW1 and SW2) provide external power-on-reset and reset to the MCU. Table 22 shows the reset switches.

**Table 22. Reset switches**

Switches	Description
SW1	EXT_POR_B for external power-on reset
SW2	RESET_B for functional reset

## 6 Connectors

Table 23 lists the connectors available on the EVB.

**Table 23. Connectors**

Connector	Description
P1	38-pin Nexus parallel trace
P2	2.1 mm barrel connector for standalone configuration using PwrSBC
J4	4-pin terminal block for standalone configuration using external power
J5	14-pin JTAG
J10	34-pin Nexus Aurora trace
J11	DB-9 PwrSBC CAN interface
J12	SMA external clock
J16	Molex PwrSBC LIN interface
J26	SIPI Connector
J200	240-pin main board interface
J201	240-pin main board interface

### 6.1 JTAG connector

The JTAG port is accessed via the 14-pin BERG connector (J5).

**Table 24. JTAG connector**

Pin	Signal	Pin	Signal
1	TDI	2	GND
3	TDO	4	GND
5	TCK	6	GND
7	EVTI	8	EXT_POR_B
9	RESET_B	10	TMS

**Table 24. JTAG connector (continued)**

Pin	Signal	Pin	Signal
11	VDD_HV_IO	12	GND
13	RDY_B	14	JCOMP

## 6.2 Nexus parallel trace connector

Nexus parallel trace is supported via the 38-pin MICTOR connector (P1).

**Table 25. Nexus parallel trace connector**

Pin	Signal	Pin	Signal
1	NC	2	NC
3	NC	4	NC
5	NC	6	NC
7	FAB	8	NC
9	RESET_B	10	EVTI
11	TDO	12	VDD_HV_IO
13	NC	14	RDY_B
15	TCK	16	NC
17	TMS	18	NC
19	TDI	20	NC
21	JCOMP	22	NC
23	NC	24	MDO3
25	NC	26	MDO2
27	NC	28	MDO1
29	NC	30	MDO0
31	12V	32	EVTO_B
33	12V	34	MCKO
35	NC	36	MSEO1_B
37	NC	38	MSEO0_B

## 6.3 Nexus Aurora trace connector

Nexus parallel trace is supported via the 34-pin SAMTEC connector (J10).

**Table 26. Nexus Aurora trace connector**

Pin	Signal	Pin	Signal
1	AURORA TX0P	2	VDD_HV_IO

**Table 26. Nexus Aurora trace connector (continued)**

Pin	Signal	Pin	Signal
3	AURORA TX0N	4	TCK
5	GND	6	TMS
7	AURORA TX1P	8	TDI
9	AURORA TX1N	10	TDO
11	GND	12	JCOMP
13	NC	14	NC
15	NC	16	EVTI
17	GND	18	EVTO
19	NC	20	EXT_POR_B
21	NC	22	RESET_B
23	GND	24	GND
25	NC	26	AURORA CLKP
27	NC	28	AURORA CLKN
29	GND	30	GND
31	AURORA RX0P	32	RDY_B
33	AURORA RX0N	34	NC
SH1	GND	SH2	GND

## 6.4 SIPI connector

SIPI communication is supported via the 10-pin SAMTEC connector (J26).

**Table 27. SIPI connector**

Pin	Signal	Pin	Signal
1	SIPI TXP	2	GND
3	SIPI TXN	4	GND
5	GND	6	SIPI DRCLK
7	SIPI RXN	8	GND
9	SIPI RXP	10	GND

## 6.5 Main board interface

The two high-density interface connectors on the expansion board (J201 and J200) card allow connection to the main board’s matching connectors (J56 and J43).

**Table 28. Main board interface connector J201**

J201A connector				J201B			
Pin	Signal	Pin	Signal	Pin	Signal	Pin	Signal
1	1.25 V	2	1.25 V	121	5 V	122	5 V
3	1.25 V	4	1.25 V	123	5 V	124	5 V
5	PA0	6	PA1	125	PD7	126	PH8
7	PA2	8	PA3	127	PH5	128	PI1
9	PA4	10	PA5	129	NC	130	PG11
11	PA6	12	PA7	131	NC	132	NC
13	PA8	14	PA9	133	NC	134	NC
15	PA10	16	PA11	135	NC	136	NC
17	PA12	18	PA13	137	NC	138	NC
19	NC	20	PC2	139	NC	140	NC
21	NC	22	NC	141	RESET_B	142	NC
23	NC	24	NC	143	NC	144	NC
25	PC0	26	PC1	145	NC	146	NC
27	PH7	28	PF0	147	NC	148	NC
29	PC4	30	MB_PTC5	149	NC	150	NC
31	PC6	32	MB_PTC7	151	NC	152	NC
33	MB_CAN_RXD	34	MB_CAN_TXD	153	NC	154	NC
35	PD8	36	PH4	155	NC	156	NC
37	PD6	38	PD5	157	NC	158	NC
39	PG5	40	PG9	159	NC	160	NC
41	3.3 V	42	3.3 V	161	1.25 V	162	1.25 V
43	3.3 V	44	3.3 V	163	1.25 V	164	1.25 V
45	PC11	46	NC	165	NC	166	NC
47	PC12	48	NC	167	NC	168	NC
49	NC	50	PA14	169	NC	170	NC
51	PF15	52	PF14	171	NC	172	NC
53	NC	54	NC	173	NC	174	NC
55	NC	56	NC	175	NC	176	NC
57	PG10	58	NC	177	NC	178	NC
59	NC	60	NC	179	NC	180	NC
61	1.25 V	62	1.25 V	181	5 V	182	5 V
63	1.25 V	64	1.25 V	183	5 V	184	5 V
65	NC	66	NC	185	NC	186	NC

**Table 28. Main board interface connector J201 (continued)**

J201A connector				J201B			
Pin	Signal	Pin	Signal	Pin	Signal	Pin	Signal
67	PG2	68	PG3	187	NC	188	NC
69	PG4	70	NC	189	NC	190	NC
71	PG6	72	NC	191	NC	192	NC
73	NC	74	PC10	193	NC	194	NC
75	NC	76	PC13	195	NC	196	NC
77	NC	78	PC14	197	NC	198	NC
79	PA15	80	PE14	199	NC	200	NC
81	NC	82	NC	201	3.3 V	202	3.3 V
83	NC	84	NC	203	3.3 V	204	3.3 V
85	PI0	86	PE15	205	NC	206	NC
87	PI2	88	PI3	207	NC	208	NC
89	PI4	90	NC	209	NC	210	NC
91	NC	92	NC	211	NC	212	NC
93	PI8	94	PI9	213	NC	214	NC
95	PI10	96	PI11	215	NC	216	NC
97	PI12	98	PI13	217	NC	218	NC
99	PI14	100	PI15	219	NC	220	NC
101	NC	102	NC	221	VDD_HV_IO_M AIN	222	VDD_HV_IO_M AIN
103	NC	104	NC	223	VDD_HV_IO_M AIN	224	VDD_HV_IO_M AIN
105	PE0	106	NC	225	NC	226	NC
107	PE2	108	NC	227	NC	228	NC
109	PE4	110	PE5	229	NC	230	NC
111	PE6	112	PE7	231	NC	232	NC
113	NC	114	PE9	233	NC	234	NC
115	PE10	116	PE11	235	NC	236	NC
117	PE12	118	PE13	237	NC	238	NC
119	PG8	120	PJ9	239	NC	240	NC

**Table 29. Main board interface connector J200**

J201A connector				J201B			
Pin	Signal	Pin	Signal	Pin	Signal	Pin	Signal
120	5 V	119	5 V	240	1.25 V	239	1.25 V
118	5 V	117	5 V	238	1.25 V	237	1.25 V
116	NC	115	NC	236	PB7	235	PB8
114	NC	113	NC	234	PB13	233	PB14
112	NC	111	NC	232	PB9	231	PB10
110	NC	109	NC	230	PB5	229	PB4
108	NC	107	NC	228	PB11	227	PB6
106	NC	105	NC	226	PB15	225	PB12
104	NC	103	NC	224	NC	223	NC
102	NC	101	NC	222	NC	221	NC
100	NC	99	NC	220	5 V	219	5 V
98	NC	97	NC	218	5 V	217	5 V
96	NC	95	NC	216	NC	215	NC
94	NC	93	NC	214	NC	213	NC
92	NC	91	NC	212	NC	211	NC
90	NC	89	NC	210	NC	209	NC
88	NC	87	NC	208	NC	207	PD9
86	NC	85	NC	206	NC	205	PD11
84	NC	83	NC	204	PD12	203	NC
82	NC	81	NC	202	MB_LIN_TXD	201	MB_LIN_RXD
80	1.25 V	79	1.25 V	200	3.3 V	199	3.3 V
78	1.25 V	77	1.25 V	198	3.3 V	197	3.3 V
76	NC	75	NC	196	PF0	195	NC
74	NC	73	NC	194	NC	193	PF3
72	NC	71	NC	192	PF4	191	PF5
70	NC	69	NC	190	PF6	189	PF7
68	NC	67	NC	188	PF8	187	PF9
66	NC	65	NC	186	PF10	185	PF11
64	NC	63	NC	184	PF12	183	PF13
62	NC	61	NC	182	NC	181	NC
60	NC	59	NC	180	1.25	179	1.25
58	NC	57	NC	178	1.25	177	1.25
56	NC	55	NC	176	PD14	175	NC

**Table 29. Main board interface connector J200 (continued)**

J201A connector				J201B			
Pin	Signal	Pin	Signal	Pin	Signal	Pin	Signal
54	NC	53	NC	174	NC	173	PD3
52	NC	51	NC	172	PD4	171	NC
50	NC	49	NC	170	NC	169	PD0
48	NC	47	NC	168	PC15	167	PD1
46	NC	45	NC	166	PD2	165	NC
44	NC	43	NC	164	NC	163	NC
42	NC	41	NC	162	NC	161	NC
40	3.3 V	39	3.3 V	160	3.3 V	159	3.3 V
38	3.3 V	37	3.3 V	158	3.3 V	157	3.3 V
36	NC	35	NC	156	PJ0	155	PJ1
34	NC	33	NC	154	PJ2	153	PJ3
32	NC	31	NC	152	PJ4	151	PJ5
30	NC	29	NC	150	PJ6	149	PJ7
28	NC	27	NC	148	PJ8	147	NC
26	NC	25	NC	146	NC	145	NC
24	NC	23	NC	144	NC	143	NC
22	NC	21	NC	142	NC	141	NC
20	VDD_HV_IO_M AIN	19	VDD_HV_IO_M AIN	140	NC	139	NC
18	VDD_HV_IO_M AIN	17	VDD_HV_IO_M AIN	138	NC	137	NC
16	NC	15	NC	136	NC	135	NC
14	NC	13	NC	134	NC	133	NC
12	NC	11	NC	132	NC	131	NC
10	NC	9	NC	130	PH6	129	NC
8	NC	7	NC	128	NC	127	PH9
6	NC	5	NC	126	PH10	125	PH11
4	NC	3	NC	124	PH12	123	PH13
2	NC	1	NC	122	PH14	121	PH15

## 7 LEDs

LEDs shown in [Table 30](#) provide indicators for:

- Power from externally-supplied voltages
- Power output from the PwrSBC

## Test points

- Reset states
- Fail-safe signals from the PwrSBC

**Table 30. LEDs**

LED	Description
D1	EXT_POR_B
D2	RESET_B
D3	External power supply 5 V
D4	External power supply 3.3 V
D5	External power supply 1.25 V
D6	PwrSBC VSUP
D9	PwrSBC VCAN
D10	PwrSBC FS1
D12	PwrSBC FS0
D15	PwrSBC VAUX
D16	PwrSBC VCCA
D17	PwrSBC VCORE
D18	PwrSBC VPRE

## 8 Test points

Test points shown in [Table 31](#) are available to allow probing of various voltages.

**Table 31. Test points**

Test Point	Description
TP1	VDD_HV_IO
TP2	CLK_OUT
TP3	VDD_HV_FLA0
TP4	GND
TP5	GND
TP6	VSUP
TP8	VDD_LV_NEXUS
TP9	VSUP1/2 — PwrSBC supply
TP11	VDD_LV_LFAST
TP12	VCAN — PwrSBC CAN supply
TP13	GND
TP14	FS1 — PwrSBC fail safe output 1
TP15	VSW1/VSW2 — PwrSBC switching point

**Table 31. Test points (continued)**

Test Point	Description
TP16	VDD_LV_PLL
TP17	VDD_LV_CORE
TP18	FB_CORE — PwrSBC feedback core
TP19	GND
TP20	VSW_CORE PwrSBC switching core
TP21	COMP_CORE — PwrSBC compensation
TP22	VDD_HV_OSC0
TP23	VDD_HV_ADR0
TP24	VDD_HV_ADR1
TP25	VDD_HV_ADV0/1
TP26	VDD_HV_PMU
TP27	VCCA — PwrSBC VCCA output
TP28	VCORE — PwrSBC VCORE output
TP29	VPRE — PwrSBC preregulator
TP30	VAUX — PwrSBC VAUX output

## 9 Port pin to main board mapping

When the expansion board is connected to the main board, the port pins are routed to the main board via the interface connectors. [Table 32](#) shows the port pin mapping to the main board connectors.

For example, port pin PB4 can be accessed on the main board from connector P9 pin 8.

**Table 32. Port pin mapping to main board connectors**

MPC5744P port pin	MPC5746MMB port pin connectors	MPC5746MMB communication interface
PA0	P8.1	
PA1	P8.2	
PA2	P8.3	
PA3	P8.4	
PA4	P8.5	
PA5	P8.6	
PA6	P8.7	
PA7	P8.8	
PA8	P8.9	
PA9	P8.10	
PA10	P8.11	

**Table 32. Port pin mapping to main board connectors (continued)**

MPC5744P port pin	MPC5746MMB port pin connectors	MPC5746MMB communication interface
PA11	P8.12	
PA12	P8.13	
PA13	P8.14	
PA14	P12.6	J6 CAN DB9 connector
PA15	P14.15	
PB0	P10.10 (Must connect J17 5–6 on expansion board)	J5 CAN DB9 connector
PB1	P10.9 (Must connect J17 2–3 on expansion board)	
PB2	P11.15 (Must connect J17 11–12 on expansion board)	J19 RS-232 DB9 connector
PB3	P11.16 (Must connect J17 8–9 on expansion board)	
PB4	P9.8	
PB5	P9.7	
PB6	P9.10	
PB7	P9.1	
PB8	P9.2	
PB9	P9.5	
PB10	P9.6	
PB11	P9.9	
PB12	P9.12	
PB13	P9.3	
PB14	P9.4	
PB15	P9.11	
PC0	P10.1	
PC1	P10.2	
PC2	P10.3	
PC3	Not implemented	
PC4	P10.5 (Must connect J19 11–12 on expansion board)	
PC5	P10.6 (Must connect J19 8–9 on expansion board)	
PC6	P10.7 (Must connect J19 2–3 on expansion board)	
PC7	P10.8 (Must connect J19 5–6 on expansion board)	

**Table 32. Port pin mapping to main board connectors (continued)**

MPC5744P port pin	MPC5746MMB port pin connectors	MPC5746MMB communication interface
PC8	Not implemented	
PC9	Not implemented	
PC10	P10.11	
PC11	P12.1	J7 Ethernet RJ45 connector
PC12	P10.13	
PC13	P10.14	
PC14	P10.15	
PC15	P15.9	J2 FlexRay DB9 connector
PD0	P15.8	
PD1	P15.10	
PD2	P15.11	J2 FlexRay DB9 connector
PD3	P15.4	
PD4	P15.5	
PD5	P10.14	J7 Ethernet RJ45 connector
PD6	P10.13	
PD7	P20.1	
PD8	P10.11	
PD9	P11.10	
PD10	P20.5	J7 Ethernet RJ45 connector
PD11	P11.12	
PD12	P11.13	
PD13	Not implemented	
PD14	P15.1	
PD15	Not implemented	
PE0	P18.1	
PE1	P18.2	
PE2	P18.3	
PE3	P18.4	
PE4	P18.5	
PE5	P18.6	
PE6	P18.7	
PE7	P18.8	
PE8	P18.9	
PE9	P18.10	

**Table 32. Port pin mapping to main board connectors (continued)**

MPC5744P port pin	MPC5746MMB port pin connectors	MPC5746MMB communication interface
PE10	P18.11	
PE11	P18.12	
PE12	P18.13	
PE13	P18.14	
PE14	P18.15	
PE15	P18.16	
PF0	P10.4	J7 Ethernet RJ45 connector
PF1	Not implemented	
PF2	Not implemented	
PF3	P13.4	
PF4	P13.5	
PF5	P13.6	
PF6	P13.7	
PF7	P13.8	
PF8	P13.9	
PF9	P13.10	
PF10	P13.11	
PF11	P13.12	
PF12	P13.13	
PF13	P13.14	
PF14	P12.8	J4 LIN Molex connector
PF15	P12.7	
PG0	Not implemented	
PG1	Not implemented	
PG2	P14.3	
PG3	P14.4	
PG4	P14.5	
PG5	P10.15	J7 Ethernet RJ45 connector
PG6	P14.7	
PG7	P14.8	
PG8	P18.15	J7 Ethernet RJ45 connector
PG9	P10.16	
PG10	P12.13	
PG11	P20.6	

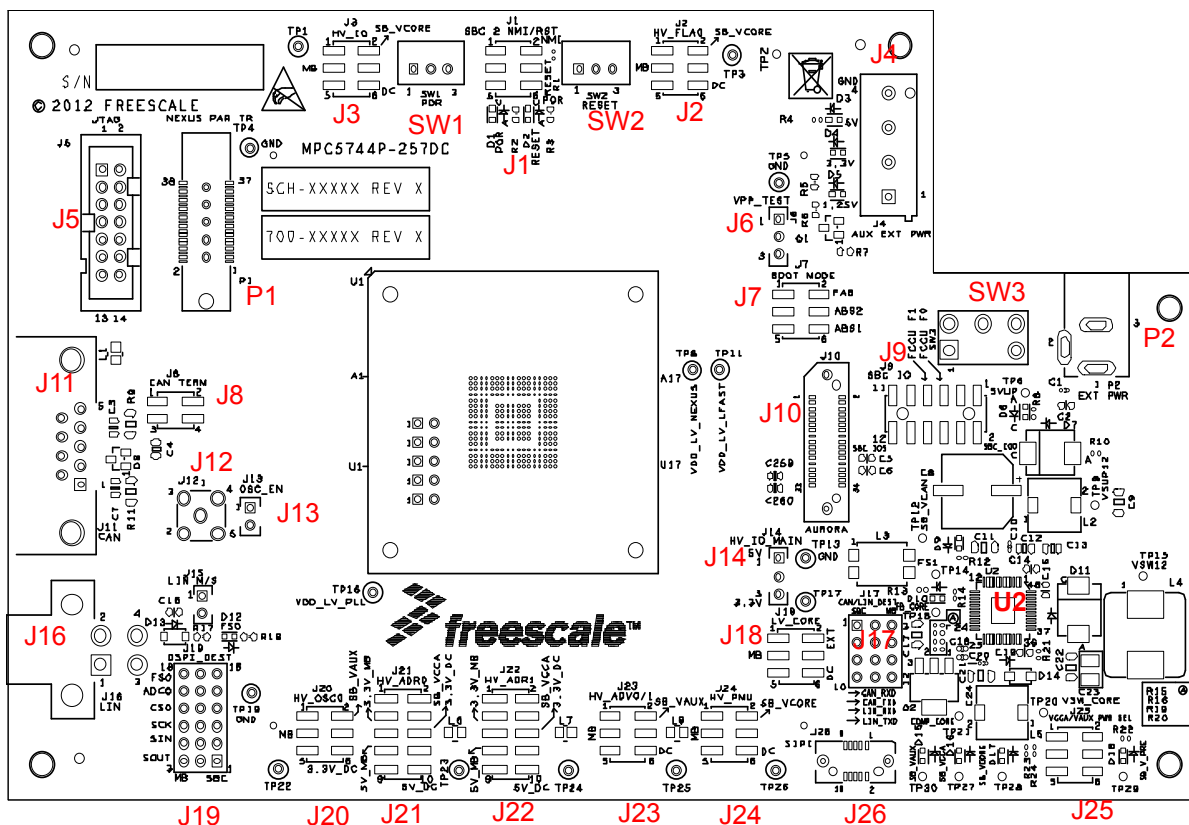
**Table 32. Port pin mapping to main board connectors (continued)**

MPC5744P port pin	MPC5746MMB port pin connectors	MPC5746MMB communication interface
PG12	Not connected to main board. Only on expansion board.	
PG13		
PG14		
PG15		
PH0		
PH1		
PH2	Not implemented	
PH3	Not implemented	
PH4	P10.12	J7 Ethernet RJ45 connector
PH5	P20.3	
PH6	P19.7	
PH7	P10.3	J7 Ethernet RJ45 connector
PH8	P20.2	
PH9	P19.10	
PH10	P19.11	
PH11	P19.12	
PH12	P19.13	
PH13	P19.14	
PH14	P19.15	
PH15	P19.16	
PI0	P16.1	
PI1	P20.4	J7 Ethernet RJ45 connector
PI2	P16.3	
PI3	P16.4	
PI4	P16.5	
PI5	Not connected to main board. Only on expansion board.	
PI6		
PI7		
PI8	P16.9	
PI9	P16.10	
PI10	P16.11	
PI11	P16.12	
PI12	P16.13	
PI13	P16.14	

**Table 32. Port pin mapping to main board connectors (continued)**

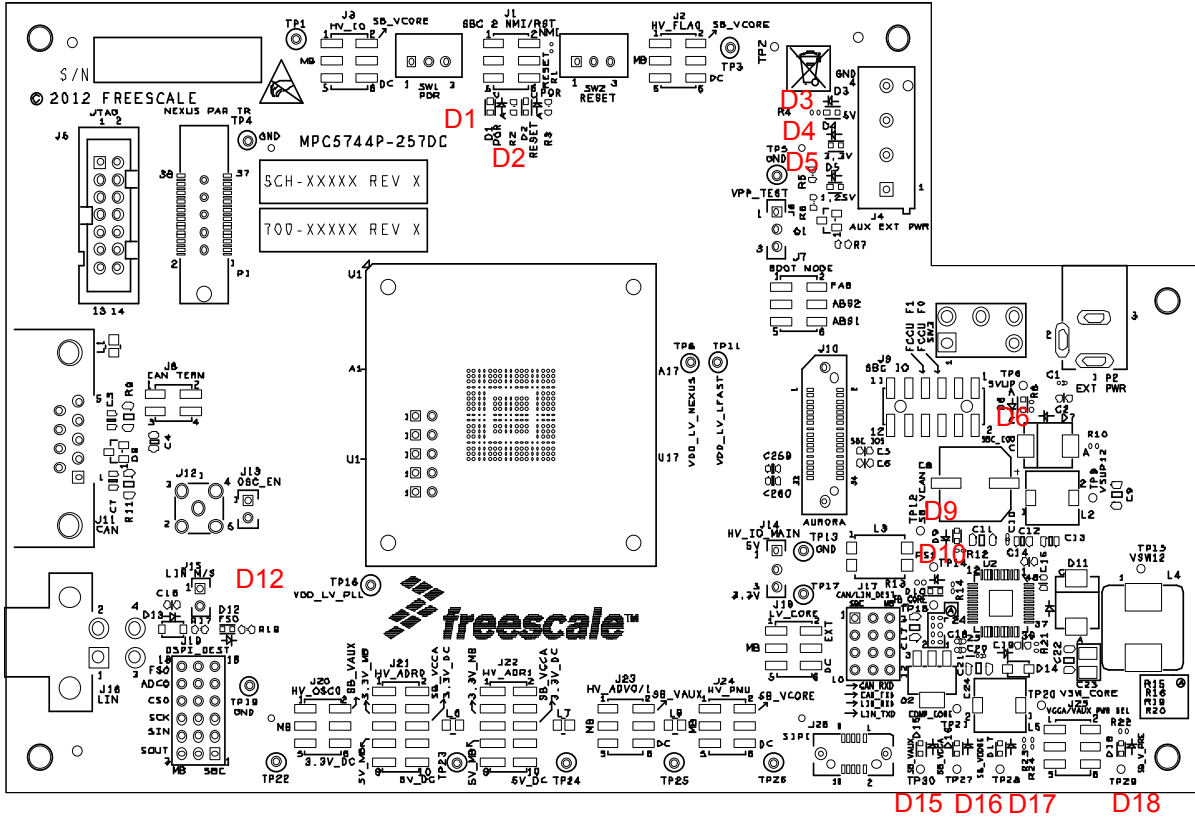
<b>MPC5744P port pin</b>	<b>MPC5746MMB port pin connectors</b>	<b>MPC5746MMB communication interface</b>
PI14	P16.15	
PI15	P16.16	
PJ0	P17.1	
PJ1	P17.2	
PJ2	P17.3	
PJ3	P17.4	
PJ4	P17.5	
PJ5	P17.6	
PJ6	P17.7	
PJ7	P17.8	
PJ8	P17.9	
PJ9	P18.16	J7 Ethernet RJ45 connector
PJ10	Not connected to main board. Only on expansion board.	
PJ11		
PJ12	Not implemented	
PJ13	Not implemented	
PJ14	Not implemented	
PJ15	Not implemented	

# 10 Diagrams



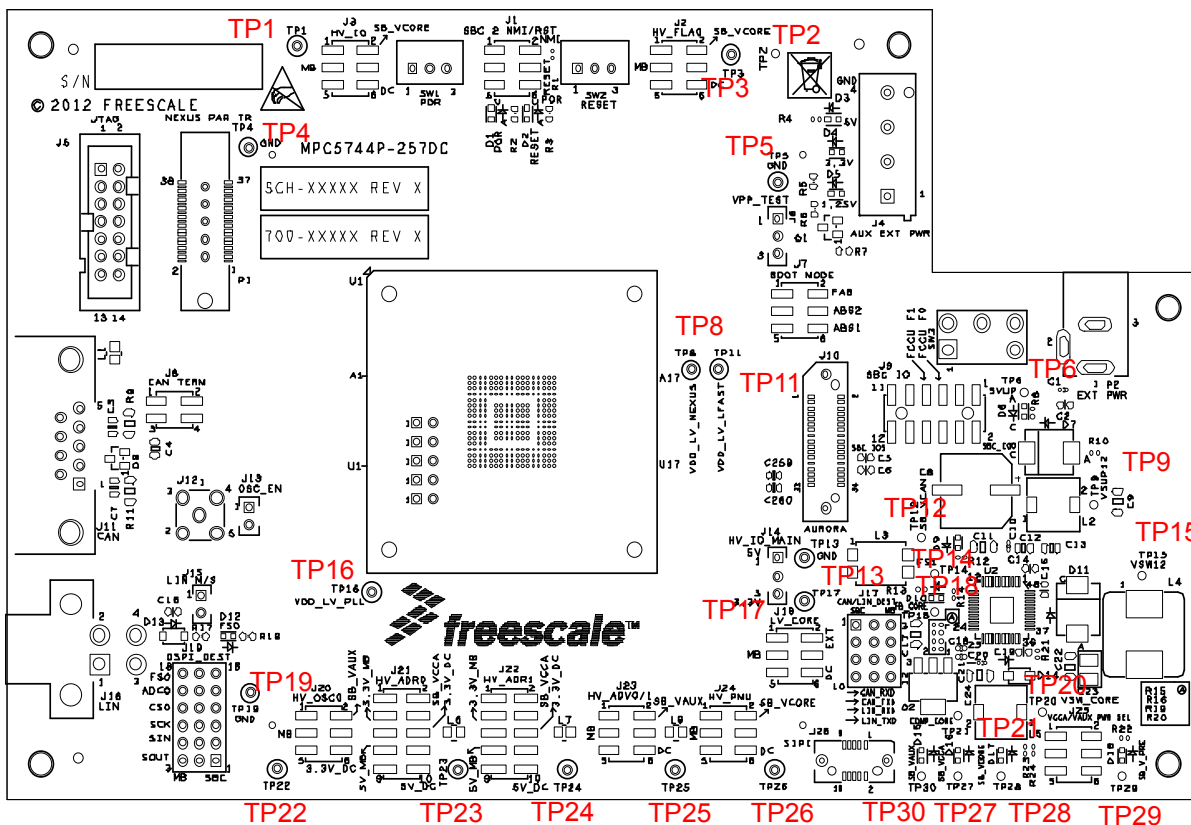
<b>FREESCALE</b> 5501 WILLIAM CANNON DRIVE WEST AUSTIN, TEXAS 78736 USA		NAME MPC5744P-257DC
THIS DOCUMENT CONTAINS INFORMATION PROPRIETARY TO FREESCALE AND SHALL NOT BE USED FOR ENGINEERING DESIGN, PROCUREMENT OR MANUFACTURE IN WHOLE OR IN PART WITHOUT THE CONSENT OF FREESCALE.		--- PUBJ (PUBLIC INFORMATION) <input checked="" type="checkbox"/> FIUG (FREESCALE INTERNAL USE ONLY) --- FCP (FREESCALE CONFIDENTIAL PROPRIETARY)
SHEET 2 OF 12	FILM PRIMARY SILKSCREEN	DATE 06-15-12
		NUMBER 170-27514
		REV A

Figure 5. Switches, jumpers, and connectors



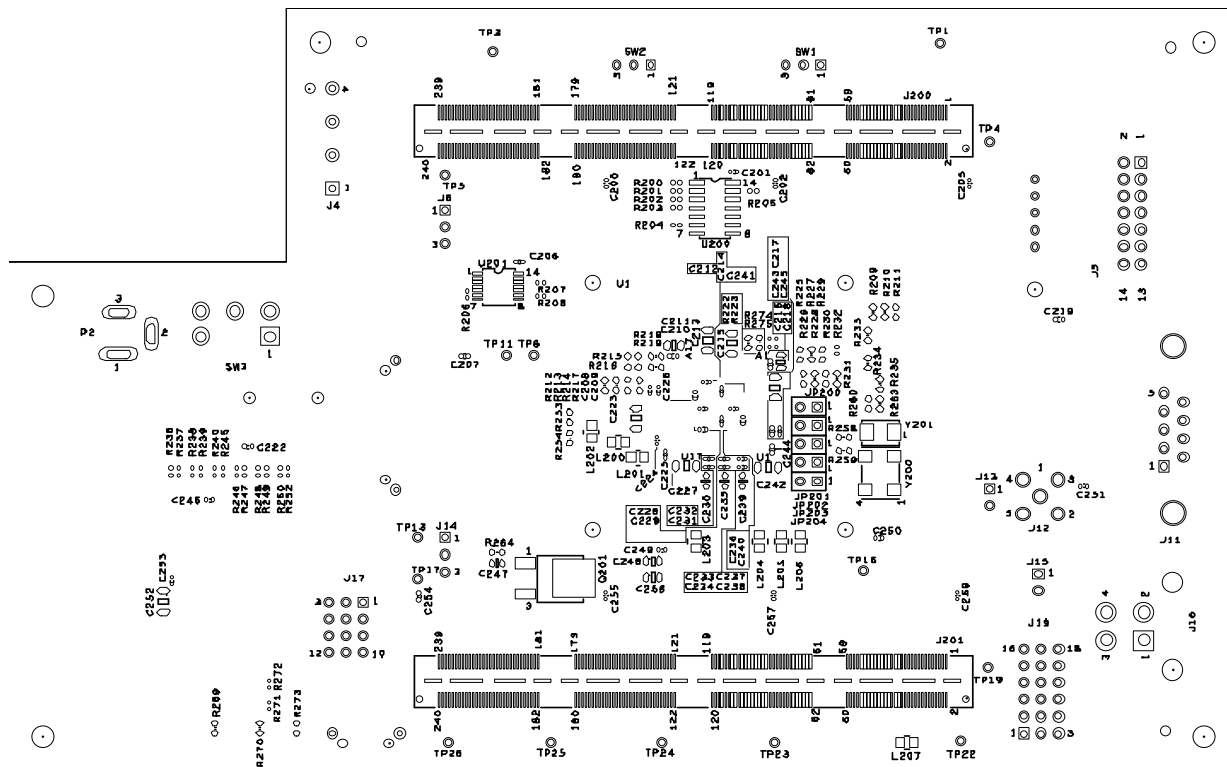
<b>FREESCALE</b> 8501 WILLIAM CANNON DRIVE WEST AUSTIN, TEXAS 78736 USA		NAME MPC5744P-257DC	
THIS DOCUMENT CONTAINS INFORMATION PROPRIETARY TO FREESCALE AND SHALL NOT BE USED FOR ENGINEERING DESIGN PROCUREMENT OR MANUFACTURE IN WHOLE OR IN PART WITHOUT THE CONSENT OF FREESCALE.		--- PUBJ (PUBLIC INFORMATION) ___ FIUG (FREESCALE INTERNAL USE ONLY) ___ FCP (FREESCALE CONFIDENTIAL PROPRIETARY)	
SHEET 2 OF 12	FILM PRIMARY SILKSCREEN	DATE 06-15-12	NUMBER 170-27514 REV A

Figure 6. LEDs



FREESCALE		NAME	
5501 WILLIAM CANNON DRIVE WEST AUSTIN, TEXAS 78736 USA		MPC5744P-257DC	
THIS DOCUMENT CONTAINS INFORMATION PROPRIETARY TO FREESCALE AND SHALL NOT BE USED FOR ENGINEERING DESIGN DOCUMENT OR MANUFACTURE IN WHOLE OR IN PART WITHOUT THE CONSENT OF FREESCALE.		<input type="checkbox"/> PUB (PUBLIC INFORMATION) <input checked="" type="checkbox"/> FIUG (FREESCALE INTERNAL USE ONLY) <input type="checkbox"/> FCP (FREESCALE CONFIDENTIAL PROPRIETARY)	
SHEET	FLW	DATE	NUMBER
2 OF 12	PRIMARY SILKSCREEN	06-15-12	170-27514 REV A

Figure 7. Test points



REV A	NUMBER 110-5214	DATE	DATE 08-18-15	SHEET 13 OF 18	SECONDARY SILKSCREEN
<p>FREESCALE          OR IN PART WITHOUT THE CONSENT OF          FREESCALE.          --- FCP (FREESCALE CONFIDENTIAL PROPRIETARY)          NOT BE USED FOR ENGINEERING DESIGN          PROTECT OR AMPLIFY IN WHOLE          PROPRIETARY TO FREESCALE AND SHALL          THIS DOCUMENT CONTAINING INFORMATION          --- PUB1 (PUBLIC INFORMATION)</p>					
<p>AUSTIN, TEXAS 78738 USA          FREESCALE</p>			<p>NAME          MPC5744P-257DC</p>		

Figure 8. Bottom view

**How to Reach Us:**

**Home Page:**  
[freescale.com](http://freescale.com)

**Web Support:**  
[freescale.com/support](http://freescale.com/support)

Information in this document is provided solely to enable system and software implementers to use Freescale products. There are no express or implied copyright licenses granted hereunder to design or fabricate any integrated circuits based on the information in this document.

Freescale reserves the right to make changes without further notice to any products herein. Freescale makes no warranty, representation, or guarantee regarding the suitability of its products for any particular purpose, nor does Freescale assume any liability arising out of the application or use of any product or circuit, and specifically disclaims any and all liability, including without limitation consequential or incidental damages. "Typical" parameters that may be provided in Freescale data sheets and/or specifications can and do vary in different applications, and actual performance may vary over time. All operating parameters, including "typicals," must be validated for each customer application by customer's technical experts. Freescale does not convey any license under its patent rights nor the rights of others. Freescale sells products pursuant to standard terms and conditions of sale, which can be found at the following address: [freescale.com/SalesTermsandConditions](http://freescale.com/SalesTermsandConditions).

Freescale, the Freescale logo, and Qorivva are trademarks of Freescale Semiconductor, Inc., Reg. U.S. Pat. & Tm. Off. SafeAssure, SafeAssure logo, are trademarks of Freescale Semiconductor, Inc. All other product or service names are the property of their respective owners.

© 2013 Freescale Semiconductor, Inc.

Document  
Number: MPC5744PEEV257UG  
Rev. 1



## Looking for pricing, stock, or lifecycle information?

Click below to explore more details on WIN SOURCE:

 [View MPC5744P-257DS on WIN SOURCE](#)

 [NXP / Nexperia Information](#)

## Optimize Your Supply Chain with WIN SOURCE Solutions

-  Global Sourcing Solution
-  Obsolete Management
-  Cost Control Management
-  Shortage Management
-  Alternative Solution
-  Excess Inventory Management