



**THE DATASHEET OF  
DK-25112-02**



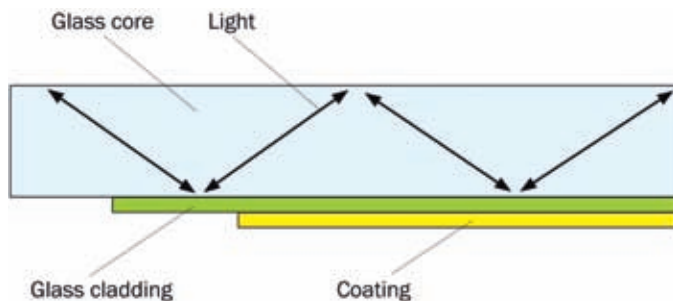
# Fiber-Optic Network Components



## DIGITUS® Optical fiber cable

### Construction of a glass fiber cable

A glass fiber cable consists mainly of three parts: The glass fiber core, carrying the light signal, the glass jacket which reflects the light and a plastic cladding which protects the glass fiber cable from external influences and makes it flexible. .



### The glass fiber core

There are various thicknesses of the glass fiber core which are described with their cross section: The single mode fiber cable with a cross section of  $9\mu\text{m}$  and multi-mode fiber cables with cross sections of  $50\mu\text{m}$  and  $62.5\mu\text{m}$ .

Single mode fiber cables are more costly than multi-mode fiber cables because of difficulties in the manufacture of an extremely thin cable with a cross section of  $9\mu\text{m}$ , but they have a greater range.

Additional designations are used to describe them in terms of their quality: OS1 and OS2 for single mode fiber cables, where OS2 is the best quality and OM1, OM2 and OM3 for multi-mode cables where OM3 is the best quality.

Fiber-Optic Patch Cables .....	75
Fiber-Optic Installation cable.....	79
Fiber-Optic Pigtaills .....	80

Fiber-Optic Couplers and Connectors .....	81
Fiber-Optic Spliceboxes.....	82
Fiber-Optic Accessories.....	86

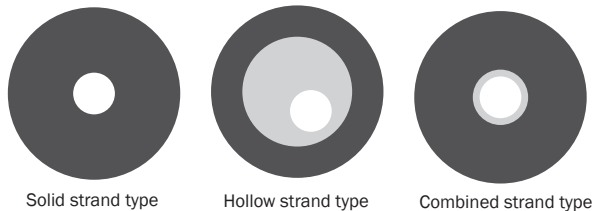
### The difference between single mode and multi mode

The light is reflected in a zigzag pattern in the core of thicker multi-mode fiber cables. This results in higher attenuation, the range of the signal reduces, in other words. The light does not refract so frequently in single mode fiber cables and guarantees an enormous range.



### Cladding

There are several forms of cladding for glass fiber cables.



The solid strand type surrounds the fiber directly. This has a disadvantageous effect when there is high strain and with temperature differences.

Unlike the solid strand type, the hollow strand type does not surround the fiber directly. There is a hollow space between the cladding and the fiber which reduces the disadvantageous effects of strain load and temperature differences.

The combined strand type represents an intermediate form of the solid core type and the hollow core type. The hollow space of the cladding is filled here with a gel or similar.

### Use of the individual glass fiber cables

Multi fire cables are usually found in cabling in buildings and in short and medium distance runs. OM2 fiber cables are used the most. OM3 fibers of better quality are used more and more frequently and replace OM2 fiber cables over the long run. Single mode fiber cables are used because of their good signal properties in long distance cabling.

### LWL plugs

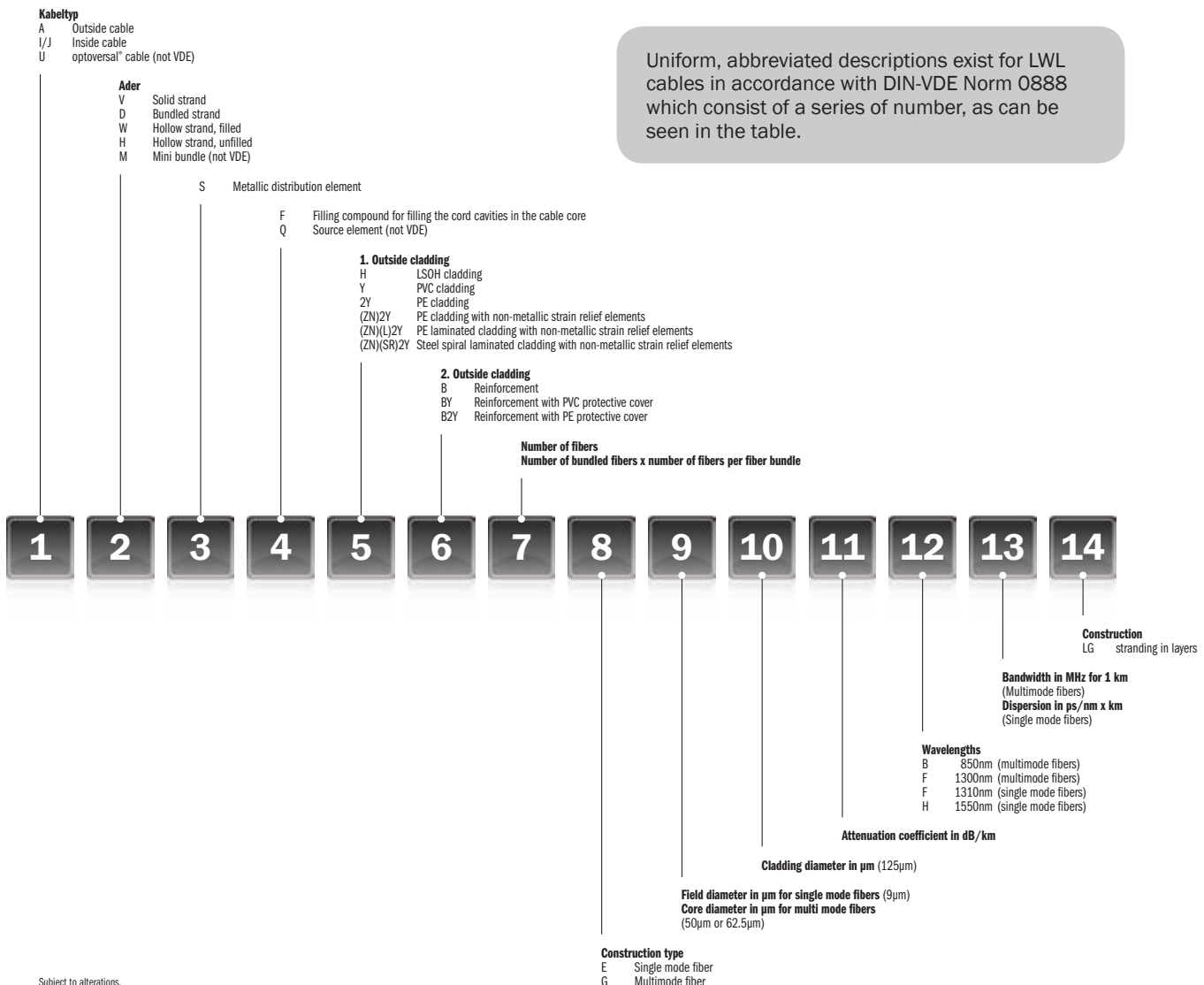
The widest distributed LWL plugs are ST-, SC- and LC plugs. The LC plugs gains an ever increasing share of the market for glass fiber plugs because of the compact size and their use with mini GBIC modules in switches or media converters.

### Pigtails

Pigtails are cables equipped with an LWL plug on one side and a plain glass fiber cable on the other side. They are used at the end points of laid cables and are spliced with each other.

### Splicing

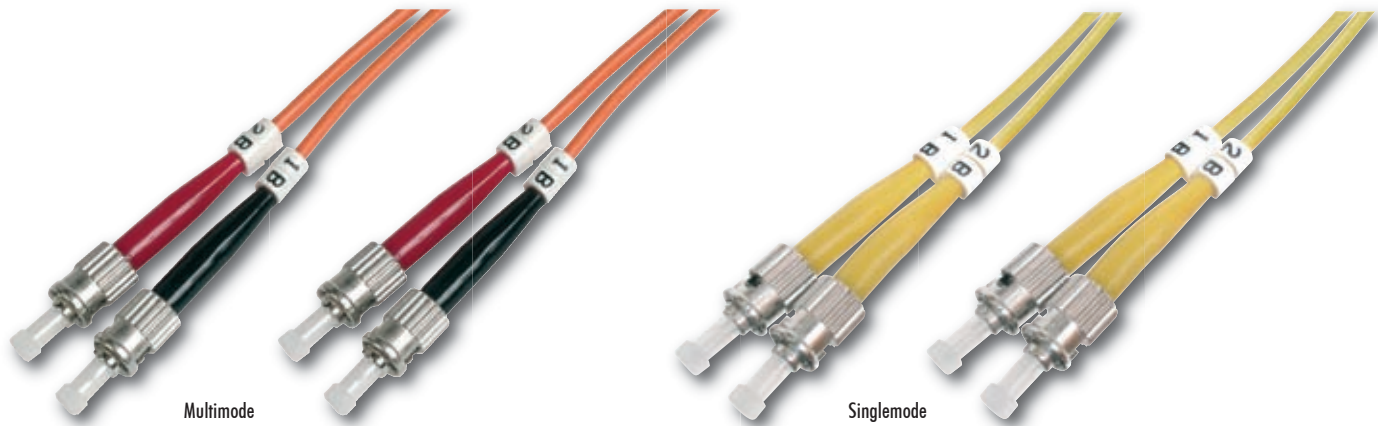
Splicing is understood to be the connection of two glass fiber cables. These are adjusted at their end points and permanently fused together.



Uniform, abbreviated descriptions exist for LWL cables in accordance with DIN-VDE Norm 0888 which consist of a series of number, as can be seen in the table.

## ST / ST Fiber-optic patch cable, duplex

- ST / ST Connectors
- Halogen free cable I-VH 2G-XXX (Multimode), I-VH 2E-XXX (Singlemode)
- OM3 up to 10Gbit Ethernet, OM1 & 2 1Gbit Ethernet
- Connector with ceramic ferrule
- Two color Boot (Multimode cable)
- Single packed, with test report

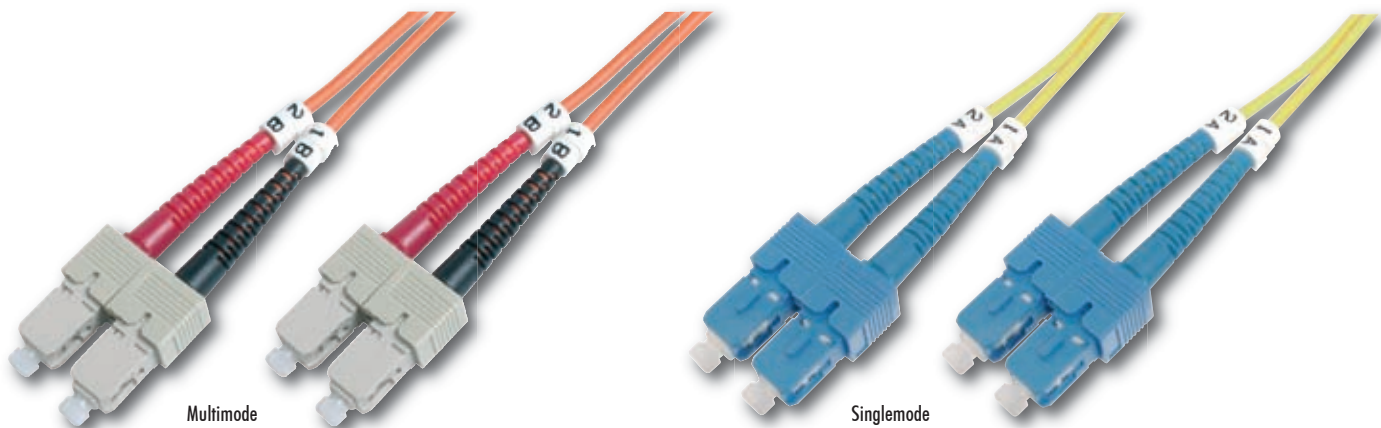


Please choose your requested product by the corresponding article number or the EAN code.

	Multimode OM2 - 50/125 μ		Multimode OM1 - 62,5/125 μ		Multimode OM3 - 50/125 μ		Singlemode - 9/125 μ
1,0 m	247999 / DK-2511-01	1,0 m	248194 / DK-2611-01	1,0 m	248279 / DK-2511-01/3	1,0 m	248330 / DK-2911-01
2,0 m	248033 / DK-2511-02	2,0 m	248217 / DK-2611-02	2,0 m	248286 / DK-2511-02/3	2,0 m	248347 / DK-2911-02
3,0 m	248064 / DK-2511-03	3,0 m	248224 / DK-2611-03	3,0 m	248293 / DK-2511-03/3	3,0 m	248354 / DK-2911-03
5,0 m	248118 / DK-2511-05	5,0 m	248231 / DK-2611-05	5,0 m	248309 / DK-2511-05/3	5,0 m	248361 / DK-2911-05
7,0 m	248101 / DK-2511-07	7,0 m	248255 / DK-2611-07	7,0 m	248316 / DK-2511-07/3	7,0 m	248378 / DK-2911-07
10,0 m	248095 / DK-2511-10	10,0 m	248262 / DK-2611-10	10,0 m	248323 / DK-2511-10/3	10,0 m	248385 / DK-2911-10

## SC / SC Fiber-optic patch cable, duplex

- SC / SC Connector
- Halogen free cable I-VH 2G-XXX (Multimode), I-VH 2E-XXX (Singlemode)
- OM3 up to 10Gbit Ethernet, OM1 & 2 1Gbit Ethernet
- Connector with ceramic ferrule
- Two color Boot (Multimode cable)
- Single packed, with test report

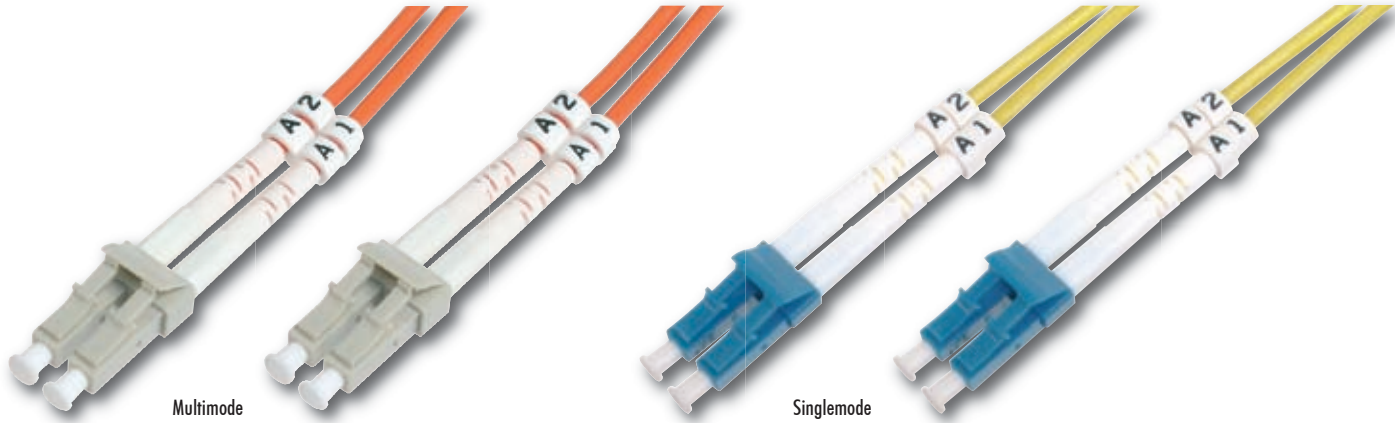


Please choose your requested product by the corresponding article number or the EAN code.

	Multimode OM2 - 50/125 μ		Multimode OM1 - 62,5/125 μ		Multimode OM3 - 50/125 μ		Singlemode - 9/125 μ
1,0 m	248392 / DK-2522-01	1,0 m	248460 / DK-2622-01	1,0 m	248538 / DK-2522-01/3	1,0 m	248736 / DK-2922-01
2,0 m	248408 / DK-2522-02	2,0 m	248477 / DK-2622-02	2,0 m	248545 / DK-2522-02/3	2,0 m	248743 / DK-2922-02
3,0 m	248415 / DK-2522-03	3,0 m	248491 / DK-2622-03	3,0 m	248552 / DK-2522-03/3	3,0 m	248750 / DK-2922-03
5,0 m	248422 / DK-2522-05	5,0 m	248507 / DK-2622-05	5,0 m	248569 / DK-2522-05/3	5,0 m	248767 / DK-2922-05
7,0 m	248446 / DK-2522-07	7,0 m	248514 / DK-2622-07	7,0 m	248576 / DK-2522-07/3	7,0 m	248774 / DK-2922-07
10,0 m	248453 / DK-2522-10	10,0 m	248521 / DK-2622-10	10,0 m	248729 / DK-2522-10/3	10,0 m	248781 / DK-2922-10

**LC / LC**
**Fiber-optic patch cable, duplex**

- LC / LC Connector
- Halogen free cable I-VH 2G-XXX (Multimode), I-VH 2E-XXX (Singlemode)
- OM3 up to 10Gbit Ethernet, OM1 & 2 1Gbit Ethernet
- Connector with ceramic ferrule
- Single packed, with test report



Multimode

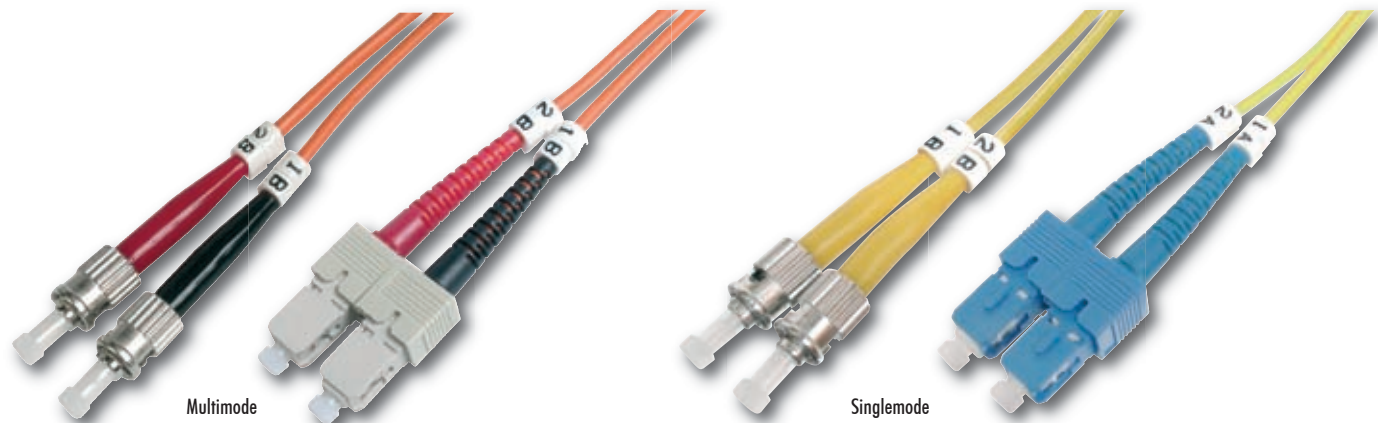
Singlemode

Please choose your requested product by the corresponding article number or the EAN code.

	Multimode OM2 - 50/125 μ		Multimode OM1 - 62,5/125 μ		Multimode OM3 - 50/125 μ		Singlemode - 9/125 μ
1,0 m	249030 / DK-2533-01	1,0 m	248798 / DK-2633-01	1,0 m	248859 / DK-2533-01/3	1,0 m	248910 / DK-2933-01
2,0 m	249054 / DK-2533-02	2,0 m	248804 / DK-2633-02	2,0 m	248866 / DK-2533-02/3	2,0 m	248927 / DK-2933-02
3,0 m	249047 / DK-2533-03	3,0 m	248811 / DK-2633-03	3,0 m	248873 / DK-2533-03/3	3,0 m	248934 / DK-2933-03
5,0 m	249061 / DK-2533-05	5,0 m	248828 / DK-2633-05	5,0 m	248880 / DK-2533-05/3	5,0 m	248941 / DK-2933-05
7,0 m	249078 / DK-2533-07	7,0 m	248835 / DK-2633-07	7,0 m	248897 / DK-2533-07/3	7,0 m	248958 / DK-2933-07
10,0 m	249085 / DK-2533-10	10,0 m	248842 / DK-2633-10	10,0 m	248903 / DK-2533-10/3	10,0 m	248965 / DK-2933-10

**ST / SC**
**Fiber-optic patch cable, duplex**

- ST / SC Connector
- Halogen free cable I-VH 2G-XXX (Multimode), I-VH 2E-XXX (Singlemode)
- OM3 up to 10Gbit Ethernet, OM1 & 2 1Gbit Ethernet
- Connector with ceramic ferrule
- Two color Boot (Multimode Cable)
- Single packed, with test report



Multimode

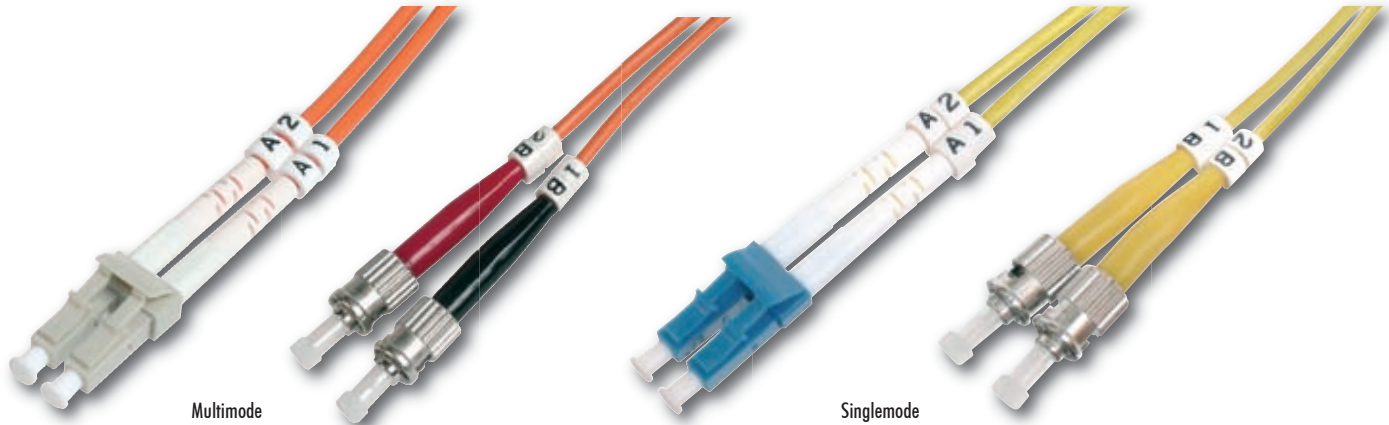
Singlemode

Please choose your requested product by the corresponding article number or the EAN code.

	Multimode OM2 - 50/125 μ		Multimode OM1 - 62,5/125 μ		Multimode OM3 - 50/125 μ		Singlemode - 9/125 μ
1,0 m	248606 / DK-2512-01	1,0 m	248668 / DK-2612-01	1,0 m	248972 / DK-2512-01/3	1,0 m	249092 / DK-2912-01
2,0 m	248613 / DK-2512-02	2,0 m	248675 / DK-2612-02	2,0 m	248989 / DK-2512-02/3	2,0 m	249108 / DK-2912-02
3,0 m	248620 / DK-2512-03	3,0 m	248682 / DK-2612-03	3,0 m	248996 / DK-2512-03/3	3,0 m	249115 / DK-2912-03
5,0 m	248637 / DK-2512-05	5,0 m	248699 / DK-2612-05	5,0 m	249009 / DK-2512-05/3	5,0 m	249122 / DK-2912-05
7,0 m	248644 / DK-2512-07	7,0 m	248705 / DK-2612-07	7,0 m	249016 / DK-2512-07/3	7,0 m	249139 / DK-2912-07
10,0 m	248651 / DK-2512-10	10,0 m	248712 / DK-2612-10	10,0 m	249023 / DK-2512-10/3	10,0 m	249146 / DK-2912-10

## LC / ST Fiber-optic patch cable, duplex

- LC / ST connector
- Halogen free cable I-VH 2G-XXX (Multimode), I-VH 2E-XXX (Singlemode)
- OM3 up to 10Gbit Ethernet, OM1 & 2 1Gbit Ethernet
- Connector with ceramic ferrule
- Two color Boot (Multimode Cable)
- Single packed, with test report

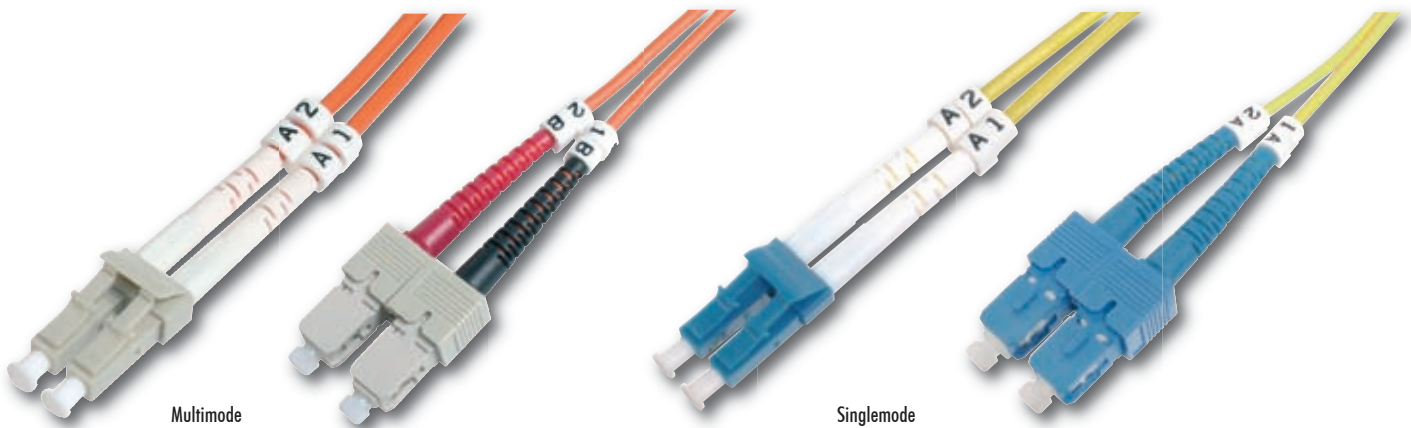


Please choose your requested product by the corresponding article number or the EAN code.

	Multimode OM2 - 50/125 μ		Multimode OM1 - 62,5/125 μ		Multimode OM3 - 50/125 μ		Singlemode - 9/125 μ
1,0 m	249153 / DK-2531-01	1,0 m	249214 / DK-2631-01	1,0 m	249276 / DK-2531-01/3	1,0 m	249337 / DK-2931-01
2,0 m	249160 / DK-2531-02	2,0 m	249221 / DK-2631-02	2,0 m	249283 / DK-2531-02/3	2,0 m	249344 / DK-2931-02
3,0 m	249177 / DK-2531-03	3,0 m	249238 / DK-2631-03	3,0 m	249290 / DK-2531-03/3	3,0 m	249351 / DK-2931-03
5,0 m	249184 / DK-2531-05	5,0 m	249245 / DK-2631-05	5,0 m	249306 / DK-2531-05/3	5,0 m	249368 / DK-2931-05
7,0 m	249191 / DK-2531-07	7,0 m	249252 / DK-2631-07	7,0 m	249313 / DK-2531-07/3	7,0 m	249375 / DK-2931-07
10,0 m	249207 / DK-2531-10	10,0 m	249269 / DK-2631-10	10,0 m	249320 / DK-2531-10/3	10,0 m	249382 / DK-2931-10

## LC / SC Fiber-optic patch cable, duplex

- LC / SC Connector
- Halogen free cable I-VH 2G-XXX (Multimode), I-VH 2E-XXX (Singlemode)
- OM3 up to 10Gbit Ethernet, OM1 & 2 1Gbit Ethernet
- Connector with ceramic ferrule
- Two color Boot (Multimode Cable)
- Single packed, with test report

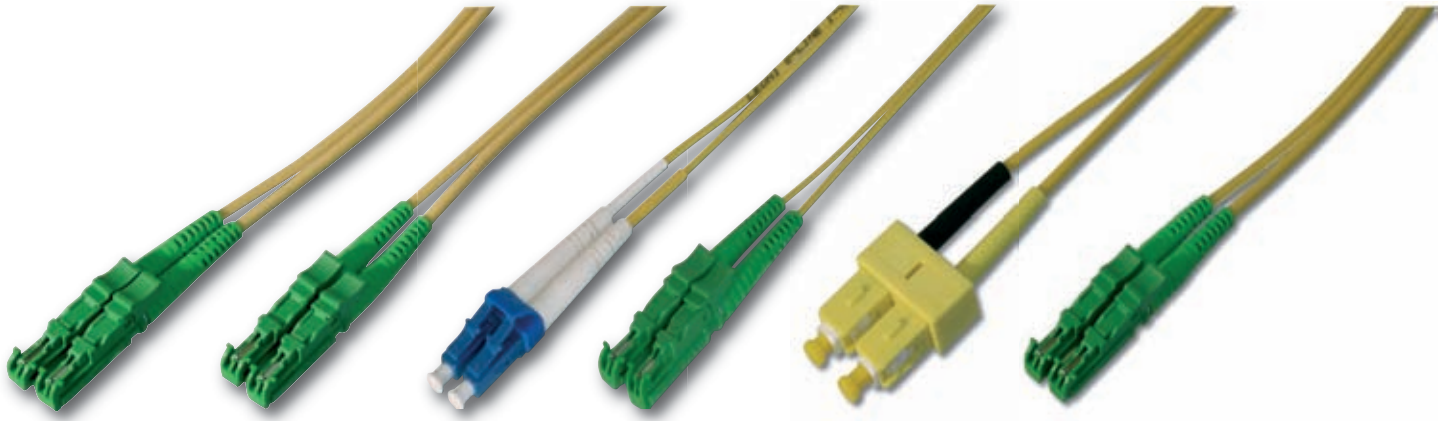


Please choose your requested product by the corresponding article number or the EAN code.

	Multimode OM2 50/125 μ		Multimode OM1 - 62,5/125 μ		Multimode OM3 - 50/125 μ		Singlemode - 9/125 μ
1,0 m	249399 / DK-2532-01	1,0 m	249467 / DK-2632-01	1,0 m	249566 / DK-2532-01/3	1,0 m	249634 / DK-2932-01
2,0 m	249405 / DK-2532-02	2,0 m	249474 / DK-2632-02	2,0 m	249580 / DK-2532-02/3	2,0 m	249641 / DK-2932-02
3,0 m	249412 / DK-2532-03	3,0 m	249481 / DK-2632-03	3,0 m	249597 / DK-2532-03/3	3,0 m	249658 / DK-2932-03
5,0 m	249436 / DK-2532-05	5,0 m	249498 / DK-2632-05	5,0 m	249603 / DK-2532-05/3	5,0 m	249665 / DK-2932-05
7,0 m	249443 / DK-2532-07	7,0 m	249511 / DK-2632-07	7,0 m	249610 / DK-2532-07/3	7,0 m	249672 / DK-2932-07
10,0 m	249450 / DK-2532-10	10,0 m	249528 / DK-2632-10	10,0 m	249627 / DK-2532-10/3	10,0 m	249689 / DK-2932-10

**E2000 / E2000, Fiberoptic patch cable, duplex**

- Singlemode 09/125  $\mu$ m with 8° APC
- Cable I-VH 2E-XXX, holgenfree
- Connector with ceramic ferrule
- Single packed with test report

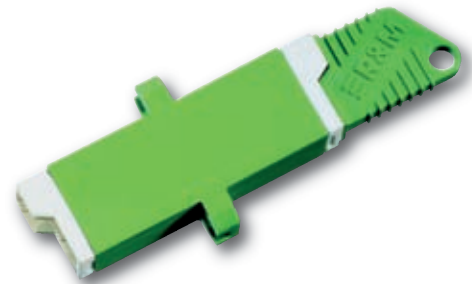


Please choose your requested product by the corresponding article number or the EAN code.

E 2000 Duplex 8° APC		E 2000 / LC 8° APC		E 2000 / SC 8° APC	
1,0 m	204725 / AL-9E2000-01I	1,0 m	204763 / AL-9E2000LC-01I	1,0 m	204800 / AL-9E2000SC-01I
2,0 m	204732 / AL-9E2000-02I	2,0 m	204770 / AL-9E2000LC-02I	2,0 m	204817 / AL-9E2000SC-02I
3,0 m	204749 / AL-9E2000-03I	3,0 m	204787 / AL-9E2000LC-03I	3,0 m	204824 / AL-9E2000SC-03I
5,0 m	204756 / AL-9E2000-05I	5,0 m	204794 / AL-9E2000LC-05I	5,0 m	204831 / AL-9E2000SC-05I

**E 2000 Pigtail, 8° APC, simplex**


- Singlemode with 8° APC
- Single packed with test report

**E2000 Coupler, simplex**


- Singlemode with 8° APC
- Zirconia sleeve

204848 / AL-9FPE2000-02I  
2m

204855 / ALWL-E2000  
Coupler

## Fiber-optic universal indoor, outdoor cable U-DQ(ZN)BH 50/125 $\mu\text{m}$ , OM 3, multimode

- Universally useable, for indoor and outdoor use
- Halogen-free, flame-resistant as per IEC 332-3 C, longitudinally and laterally water-resistant
- The cable can be delivered in additional lengths and in fabricated form
- Tractive force: 1000N
- Singlepressure stability permanent: 200N/cm
- Rodent protection
- Dry interstices
- Non metallic



### 262626 / AL-5AN4-100/3

Universal Indoor-Outdoor Cable 46 50/125  $\mu\text{m}$ , 100m

### 262657 / AL-5AN8-100/3

Universal Indoor-Outdoor Cable 86 50/125  $\mu\text{m}$ , 100m

### 262725 / AL-5AN12-100/3

Universal Indoor-Outdoor Cable 12650/125  $\mu\text{m}$ , 100m

### 262770 / AL-5AN24-100/3

Universal Indoor-Outdoor Cable 246 50/125  $\mu\text{m}$ , 100m

## Fiber-optic universal indoor, outdoor cable U-DQ(ZN) BH 50/125 $\mu\text{m}$ , OM 2, multimode

- Universally useable, for indoor and outdoor use
- Halogen-free, flame-resistant as per IEC 332-3 C, longitudinally and laterally water-resistant
- The cable can be delivered in additional lengths and in fabricated form
- Tractive force: 1000N
- Singlepressure stability permanent: 200N/cm
- Rodent protection
- Dry interstices
- Non metallic



### 005070 / AL-5AN4-100

Universal Indoor-Outdoor Cable 4650/125  $\mu\text{m}$ , 100m

### 005087 / AL-5AN8-100

Universal indoor-outdoor cable 8650/125  $\mu\text{m}$ , 100m

### 005063 / AL-5AN12-100

Universal indoor-outdoor cable 12650/125  $\mu\text{m}$ , 100m

### 262800 / AL-5AN24-100

Universal Indoor-Outdoor Cable 2x126 50/125  $\mu\text{m}$ , 100m

## Fiber-optic universal indoor, outdoor cable U-DQ(ZN)BH 09/125 $\mu\text{m}$ , OS1, singlemode

- Universally useable, for indoor and outdoor use
- Halogen-free, flame-resistant as per IEC 332-3 C, longitudinally and laterally water-resistant
- The cable can be delivered in additional lengths and in fabricated form
- Tractive force: 1000N
- Singlepressure stability permanent: 200N/cm
- Rodent protection
- Dry interstices
- Non metallic



### 262640 / AL-9AN4-100

Universal Indoor-Outdoor Cable 46 09/125  $\mu\text{m}$ , 100m

### 262695 / AL-9AN8-100

Universal Indoor-Outdoor Cable 86 09/125  $\mu\text{m}$ , 100m

### 2163466 / AL-9AN12-100

Universal Indoor-Outdoor Cable 126 09/125  $\mu\text{m}$ , 100m

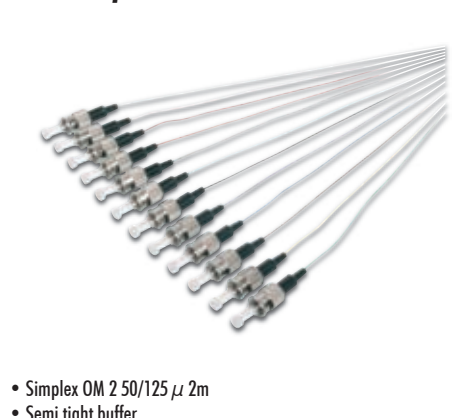
### 262817 / AL-9AN24-100

Universal Indoor-Outdoor Cable 2x126 09/125  $\mu\text{m}$ , 100m

**DIGITUS® colored pigtails, SC OM2 50/125 μ**

**DIGITUS® colored pigtails, ST OM2 50/125 μ**

**ST fiber pigtail**



- Simplex OM 2 50/125 μ 2m
- Semi tight buffer
- Colored buffer, according to IEC 302 in: white, violet, turquoise, black, red, pink, orange, grey, green, yellow, brown, blue
- Set of 12 pcs
- Incl. test report

- Simplex OM 2 50/125 μ 2m
- Semi tight buffer
- Colored buffer, according to IEC 302 in: white, violet, turquoise, black, red, pink, orange, grey, green, yellow, brown, blue
- Set of 12 pcs
- Incl. test report

- Simplex, 2m
- Tight buffer
- Single packed with test report

**261643 / DK-25221-02**  
SC pigtail, OM2 50/125 μ, 2m

**254225 / DK-25112-02**  
ST simplex pigtail, OM2 50/125 μ, 2m

**133643 / AL-5FPSC-02I**  
Multimode OM 2, 50/125 μ, 2m

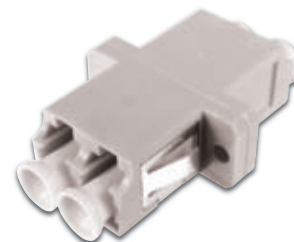
**133704 / AL-5FPSC-02/3I**  
Multimode OM 3, 50 / 125 μ, 2m

**148500 / AL-9FPSC-02I**  
Multimode OS 1, 09/125 μ, 2m

**ST fiber pigtail**

**E 2000 fiber pigtail**

**LC / LC coupler**



- Simplex, 2m.
- Tight buffer
- Single packed with test report

- Singlemode with 8° APC
- Single packed with test report

- Simplex, 2m
- Tight buffer
- Single packed with test report

**133629 / AL-5FPST-02I**  
Multimode OM 2, 50/125 μ, 2m

**133681 / AL-5FPST-02/3I**  
Multimode OM 3, 50 / 125 μ, 2m

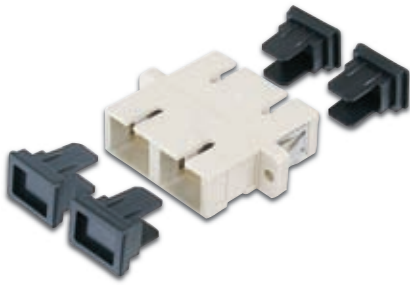
**148494 / AL-9FPST-02I**  
Singlemode OS 1, 09/125 μ, 2m

**204848 / AL-9FPE2000-02I**  
Singlemode, OS 1 09/125 μ, 2m

**163640 / ALWL-LC1D**  
phosphor bronze sleeve

**186823 / ALWL-LC2D**  
zirconia sleeve

SC / SC coupler, duplex



007562 / ALWL-SCK1D

Phosphor bronze sleeve

007586 / ALWL-SCK2D

Zirconia sleeve

ST / SC coupler, duplex



007647 / ALWL-STSC1D

Phosphor bronze sleeve

180012 / ALWL-STSC2D-P

Zirconia sleeve

ST / ST coupler, simplex



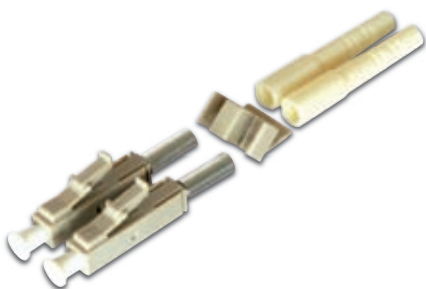
007623 / ALWL-STK1

Zirconia sleeve

007630 / ALWL-STK2

Phosphor bronze sleeve

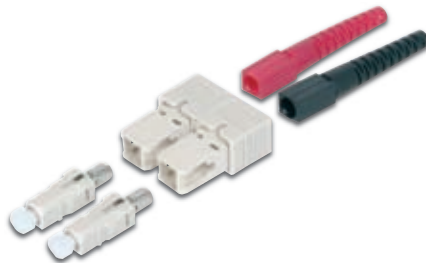
LC duplex connector



133742 / ALWL-LCD

LC connector, Phosphor Bronze sleeve, incl. boot

SC duplex connector



007555 / ALWL-SCD

Phosphor bronze sleeve, two color boots

179030 / ALWL-SCD-9

Zirconia sleeve, blue color boot

ST simplex connector



007616 / ALWL-ST

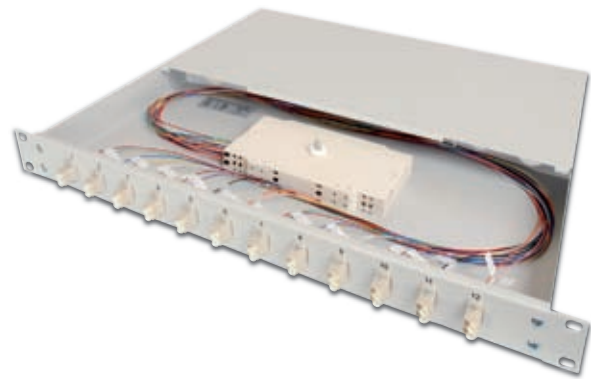
Phosphor bronze, black boot

178927 / ALWL-ST-9

Zirconia sleeve, yellow boot

**19" Fiber-optic splicebox, equipped, LC couplers, OM2 multimode**

- Completely prefabricated, fiber pigtails removed and inserted into the splice cassette(s)
- Colored pigtails
- Multimode 50/125 $\mu$ m OM2 fibers
- LC couplers with phosphor bronze sleeve
- Adapters in polymer housing
- Carrier housing of 1.5mm steel sheet
- 1U
- 19"
- 280mm depth
- PG 16 screws, splice cassette + cover, crimp splice protection and cable clips included
- grey RAL 7035


**262763 / AL-19AZ-06LCD-K**

 6x LC Duplex, Multimode 50/125 $\mu$ m

**221555 / AL-19AZ-12LCD-K**

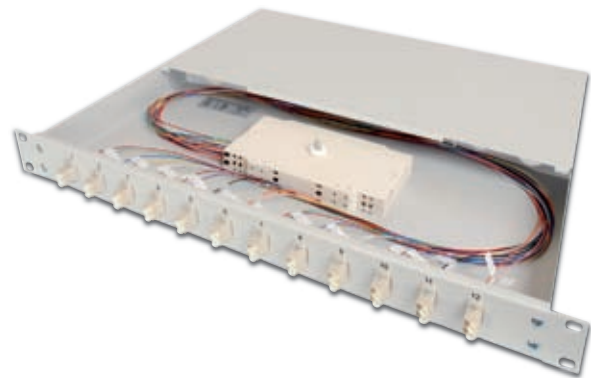
 12x LC Duplex, Multimode 50/125 $\mu$ m

**221579 / AL-19AZ-24LCD-K**

 24x LC Duplex, Multimode 50/125 $\mu$ m

**19" Fiber-optic splicebox, equipped, LC couplers, OM 3 multimode**

- Completely prefabricated, fiber pigtails removed and inserted into the splice cassette(s)
- Colored pigtails
- Multimode 50/125 $\mu$ m OM3 fibers
- LC couplers with phosphor bronze sleeve
- Adapters in polymer housing
- Carrier housing of 1.5mm steel sheet
- 1U
- 19"
- 280mm depth
- PG 16 screws, splice cassette + cover, crimp splice protection and cable clips included
- Grey RAL 7035


**262787 / AL-19AZ-06LCD-K-3**

 6x LC Duplex, Multimode 50/125 $\mu$ m

**262855 / AL-19AZ-12LCD-K-3**

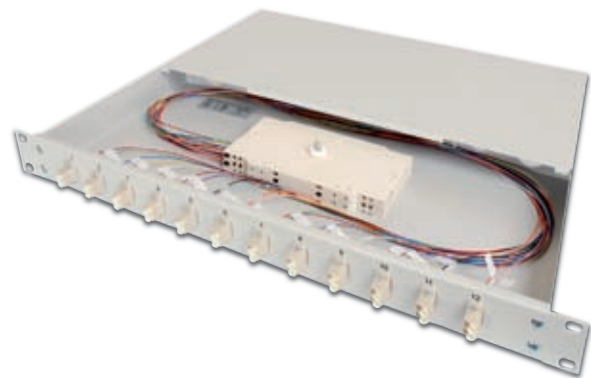
 12x LC Duplex, Multimode 50/125 $\mu$ m

**262886 / AL-19AZ-24LCD-K-3**

 24x LC Duplex, Multimode 50/125 $\mu$ m

**19" Fiber-optic splicebox, equipped, LC couplers, OS1 Singlemode**

- Completely prefabricated, fiber pigtails removed and inserted into the splice cassette(s)
- Colored pigtails
- Singlemode 09/125 $\mu$ m OS1 fibers
- LC couplers with ceramic sleeve
- Adapters in polymer housing
- Carrier housing of 1.5mm steel sheet
- 1U
- 19"
- 280mm depth
- PG 16 screws, splice cassette + cover, crimp splice protection and cable clips included
- Grey RAL 7035


**262794 / AL-19AZ-06LCD-K-9**

 6x LC Duplex, Singlemode 09/125 $\mu$ m

**221586 / AL-19AZ-12LCD-K-9**

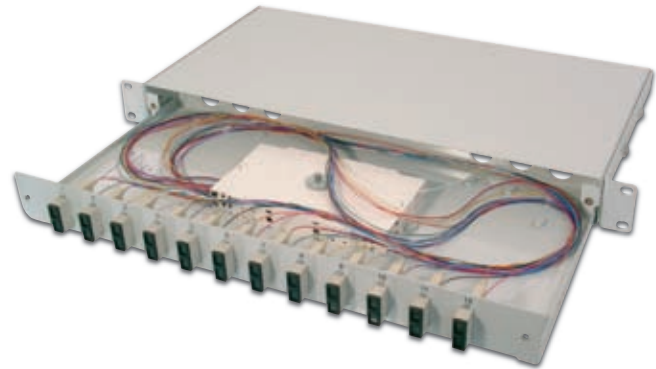
 12x LC Duplex, Singlemode 09/125 $\mu$ m

**221593 / AL-19AZ-24LCD-K-9**

 24x LC Duplex, Singlemode 09/125 $\mu$ m

## 19" Fiber-optic splicebox, equipped, SC couplers, OM2, multimode

- Completely prefabricated, fiber pigtails removed and inserted into the splice cassette(s)
- Colored pigtails
- Multimode 50/125 $\mu$ m OM2 fibers
- SC couplers with phosphor bronze sleeve
- Adapters in polymer housing
- Carrier housing of 1.5mm steel sheet
- 1U
- 19"
- 280mm depth
- PG 16 screws, splice cassette + cover, crimp splice protection and cable clips included
- Grey, RAL 7035



**262749 / AL-19AZ-06SCD-K**

6x SC Duplex, Multimode 50/125 $\mu$ m

**163060 / AL-19AZ-12SCD-K**

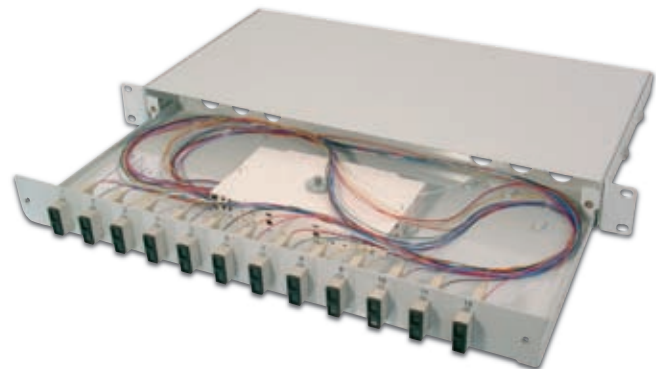
12x SC Duplex, Multimode 50/125 $\mu$ m

**163077 / AL-19AZ-24SCD-K**

24x SC Duplex, Multimode 50/125 $\mu$ m

## 19" Fiber-optic splicebox, equipped, SC couplers, OM3, multimode

- Completely prefabricated, fiber pigtails removed and inserted into the splice cassette(s)
- Colored pigtails
- Multimode 50/125 $\mu$ m OM3 fibers
- SC couplers with phosphor bronze sleeve
- Adapters in polymer housing
- Carrier housing of 1.5mm steel sheet
- 1U
- 19"
- 280mm depth
- PG 16 screws, splice cassette + cover, crimp splice protection and cable clips included
- grey, RAL 7035



**262732 / AL-19AZ-06SCD-K-3**

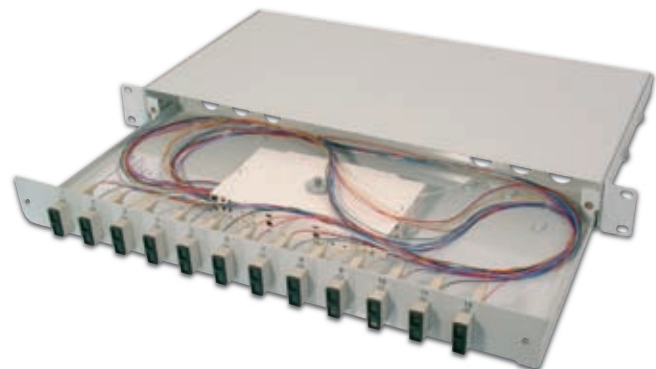
6x SC Duplex, Multimode 50/125 $\mu$ m

**262824 / AL-19AZ-24SCD-K-3**

24x SC Duplex, Multimode 50/125 $\mu$ m

## 19" Fiber-optic splicebox, equipped, SC couplers, OS1, singlemode

- Completely prefabricated, fiber pigtails removed and inserted into the splice cassette(s)
- Colored pigtails
- Singlemode 09/125 $\mu$ m OS1 fibers
- SC couplers with ceramic sleeve
- Adapters in polymer housing
- Carrier housing of 1.5mm steel sheet
- 1U
- 19"
- 280mm depth
- PG 16 screws, splice cassette + cover, crimp splice protection and cable clips included
- Grey, RAL 7035



**262756 / AL-19AZ-06SCD-K-9**

6x SC Duplex, Singlemode 09/125 $\mu$ m

**221500 / AL-19AZ-12SCD-K-9**

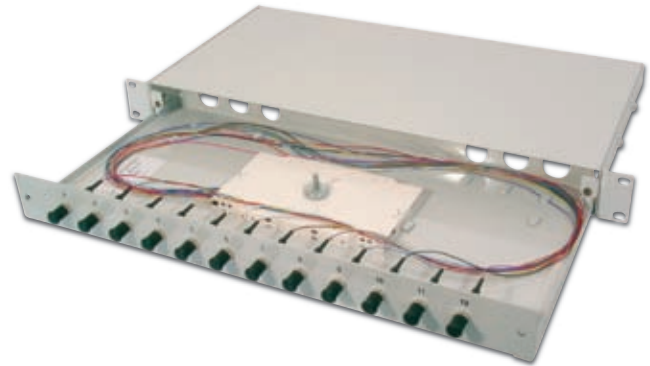
12x SC Duplex, Singlemode 09/125 $\mu$ m

**262831 / AL-19AZ-24SCD-K-9**

24x SC Duplex, Singlemode 09/125 $\mu$ m

**19" Fiber-optic splicebox , equipped, ST couplers, OM2, multimode**

- Completely prefabricated, fiber pigtails removed and inserted into the splice cassette(s)
- Colored pigtails
- Multimode 50/125 $\mu$  OM2 fibers
- ST couplers with phosphor bronze sleeve
- Adapters in metal housing
- Carrier housing of 1.5mm steel sheet
- 1U
- 19"
- 280mm depth
- PG 16 screws, splice cassette + cover, crimp splice protection and cable clips included
- Grey RAL 7035

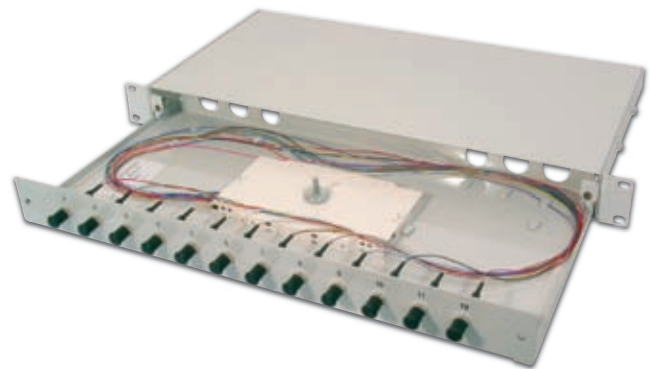

**262664 / AL-19AZ-06ST-K**

 6x ST Simplex, Multimode 50/125 $\mu$ 
**163091 / AL-19AZ-12ST-K**

 12x ST Simplex, Multimode 50/125 $\mu$ 
**163084 / AL-19AZ-24ST-K**

 24x ST Simplex, Multimode 50/125 $\mu$ 
**19" Fiber-optic splicebox, equipped, ST couplers, OM3, multimode**

- Completely prefabricated, fiber pigtails removed and inserted into the splice cassette(s)
- Colored pigtails
- Multimode 50/125 $\mu$  OM3 fibers
- ST couplers with phosphor bronze sleeve
- Adapters in metal housing
- Carrier housing of 1.5mm steel sheet
- 1U
- 19"
- 280mm depth
- PG 16 screws, splice cassette + cover, crimp splice protection and cable clips included
- Grey, RAL 7035

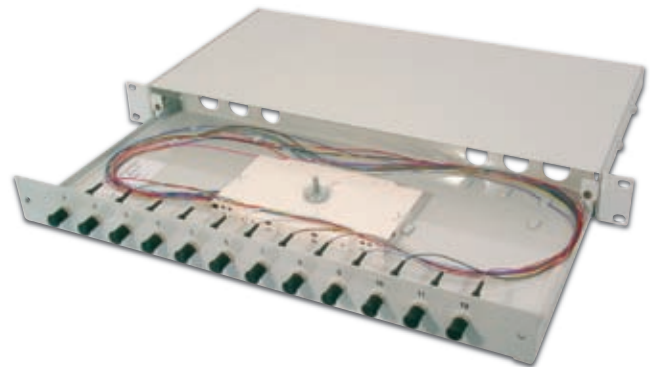

**262671 / AL-19AZ-06ST-K-3**

 6x ST Simplex, Multimode 50/125 $\mu$ 
**262633 / AL-19AZ-12ST-K-3**

 12x ST Simplex, Multimode 50/125 $\mu$ 
**262701 / AL-19AZ-24ST-K-3**

 24x ST Simplex, Multimode 50/125 $\mu$ 
**19" Fiber-optic splicebox , equipped, ST couplers, OS1, multimode**

- Completely prefabricated, fiber pigtails removed and inserted into the splice cassette(s)
- Colored pigtails
- Multimode 09/125 $\mu$  OS1 fibers
- ST couplers with ceramic sleeve
- Adapters in metal housing
- Carrier housing of 1.5mm steel sheet
- 1U
- 19"
- 280mm depth
- PG 16 screws, splice cassette + cover, crimp splice protection and cable clips included
- Grey, RAL 7035


**262688 / AL-19AZ-06ST-K-9**

 6x ST Simplex, Singlemode 09/125 $\mu$ 
**221524 / AL-19AZ-12ST-K-9**

 12x ST Simplex, Singlemode 09/125 $\mu$ 
**221531 / AL-19AZ-24ST-K-9**

 24x ST Simplex, Singlemode 09/125 $\mu$

## SC Duplex 19" fiber-splicebox, 1U, unequipped, extractable



- Carrier housing 1.5 mm sheet steel
- Grey RAL 7035
- Width 483 mm, depth 350 mm, pull-out depth 210mm, adjustable depth
- Holder for splice box
- Punched out ground to fix pigtailed
- 4 PG entries and 2 cable entries
- PG 16 screws and mounting material

**137962 / AL-19AZ-12SCD**

12 x SC Duplex Splice Box

**138662 / AL-19AZ-24SCD**

24 x SC Duplex Splice Box

## LC Duplex, SC & E 2000 simplex 19" fiber-optic-splicebox, 1U, unequipped, extractable



- Carrier housing 1.5 mm sheet steel
- Grey RAL 7035
- Width 483 mm, depth 350 mm, pull-out depth 210mm, adjustable depth
- Holder for splice box
- Punched out ground to fix pigtailed
- 4 PG entries and 2 cable entries
- PG 16 Screws and mounting material

**195757 / AL-19AZ-12SC**

12 x LC Duplex, SC & E 2000 Simplex

## ST Simplex 19" fiber-splicebox, 1U, unequipped, extractable



- Carrier housing 1.5 mm sheet steel
- Grey RAL 7035
- Width 483 mm, depth 350 mm, pull-out depth 210mm, adjustable depth
- Holder for splice box
- Punched out ground to fix pigtailed
- 4 PG entries and 2 cable entries
- PG 16 screws and mounting material

**004844 / AL-19AZ-12ST**

12 x ST, 19" Splice Box

**004868 / AL-19AZ-24ST**

24 x ST, 19" Splice Box

## Wallmounting type fiber-optic splicebox



- Carrier housing 1.5 mm sheet steel
- Grey RAL 7035
- Holder for splice cassettes
- Punched out ground to fix pigtailed
- One PG entries and 2 cable entries
- PG 16 screws and mounting material
- Lockable front door



**260349 / AL-19AZ-W-24ST**

24xST simplex

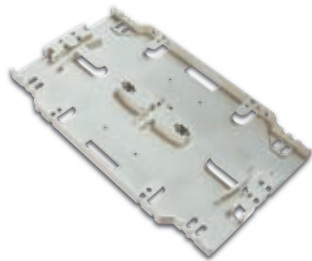
**2262619 / AL-19AZ-W-12SCD**

12xSC duplex

**262602 / AL-19AZ-W-24SC**

24xSC simplex, LC / E2000 duplex

**Splice cassette**



Different cable entries allow an optimal core connection.

- Suitable for up to 12 fiber cores
- Four cable entries
- Twist protection
- Dimensions: 155x92x8mm (WxPxH)

**007326 / AL-SK1**  
Splice cassette for 12 fiber cores

**Cover for splice cassette**



For splice cassette AL-SK1

**007371 / AL-SK4**  
Cover for splice cassette

**Splice comb**



- Incl. connection screw M3
- Measurements: 40 x 35 x 5mm
- Crimp splice

**007340 / AL-SK2**  
Crimp splice comb for 12 fiber cores

**Crimp splice protection**



Sandwich crimp splice protection for fiber core

- Measurements: 1,2 x 3,2 x 30mm

**007364 / AL-SK3**  
Crimp splice protection, 15 pcs per unit

**ST fiber blind plate**



- for not used ports in splicebox
- avoids dust
- black color plastic
- 100 pcs. per unit

**262848 / AL-BP-ST**  
Fiber blind plate ST

**SC and LC fiber blindplate**





- for not used ports in splicebox
- avoids dust
- black color plastic
- 100 pcs. per unit


**262862 / AL-BP-SCD**  
Fiber blindplate SC duplex  
**262879 / AL-BP-LCD**  
Fiber blindplate LC duplex

## Looking for pricing, stock, or lifecycle information?

Click below to explore more details on WIN SOURCE:

-  [View DK-25112-02 on WIN SOURCE](#)
-  [Assmann WSW Components Information](#)

## Optimize Your Supply Chain with WIN SOURCE Solutions

-  Global Sourcing Solution
-  Obsolete Management
-  Cost Control Management
-  Shortage Management
-  Alternative Solution
-  Excess Inventory Management