



**THE DATASHEET OF  
AT43DK312A**

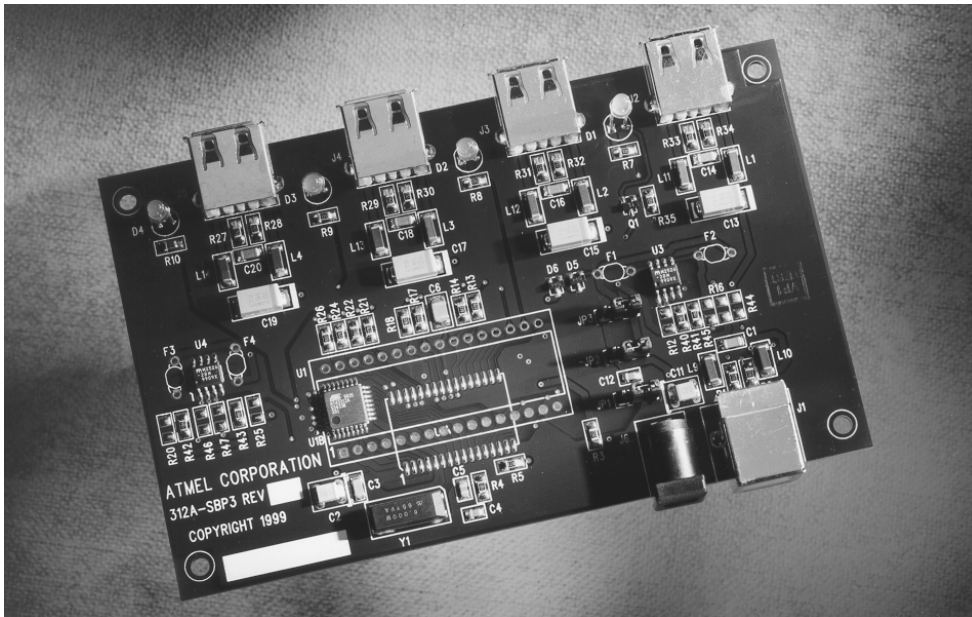


## Features

- Instant Prototype With the AT43312A Hub Controller
- Reduce Design Cycle
- Reduce System Debugging
- Simplify Component Selection
- Avoid Typical Design Problems

## Overview

The AT43DK312A comes with everything designers need to develop a full-featured USB Hub. To eliminate typical prototyping hassles, a fully populated stand-alone hub is included. Designers can take the stand-alone hub from the box to the system to see the operation of the AT43312A hub controller chip. An application note explains the component selection and resolves typical problems for the designer.



## USB Hub Development Kit

### AT43DK312A

Rev. 1641A-04/00



## Stand-alone Hub

The hub may immediately be plugged into any USB system. The only requirements are that the system has an operational USB port and that the system has the USB drivers enabled on the operating system.

The bus-powered portion of the controller will configure without the power supply attached. However, the power supply must be connected if the devices are to be attached to the downstream ports. Next, connect the upstream port to the USB connector on the computer. Windows will flash a “New Hardware Found” box indicating the “Atmel USB Hub” was detected and automatically load the generic USB hub drivers. USB check tests or downstream devices can then be used on the configured hub.

## Documentation

The application note covers the latest information detailing how to design a USB hub with the AT43312A chip. Expla-

nations of component selection, USB hub requirements, and design insights will assist designers in smoothly integrating a USB hub onto existing or new designs.

By understanding the reference design, layout and component selection may be optimized for specific design constraints.

Included:

- Application Note
- Reference Design Schematics
- Bill of Materials
- AT43312A Datasheet
- Bus- or Self-powered Operation (Jumper Selectable)
- USB Cable
- Power Supply



## Atmel Headquarters

### *Corporate Headquarters*

2325 Orchard Parkway  
San Jose, CA 95131  
TEL (408) 441-0311  
FAX (408) 487-2600

### *Europe*

Atmel U.K., Ltd.  
Coliseum Business Centre  
Riverside Way  
Camberley, Surrey GU15 3YL  
England  
TEL (44) 1276-686-677  
FAX (44) 1276-686-697

### *Asia*

Atmel Asia, Ltd.  
Room 1219  
Chinachem Golden Plaza  
77 Mody Road Tsimhatsui  
East Kowloon  
Hong Kong  
TEL (852) 2721-9778  
FAX (852) 2722-1369

### *Japan*

Atmel Japan K.K.  
9F, Tonetsu Shinkawa Bldg.  
1-24-8 Shinkawa  
Chuo-ku, Tokyo 104-0033  
Japan  
TEL (81) 3-3523-3551  
FAX (81) 3-3523-7581

## Atmel Operations

### *Atmel Colorado Springs*

1150 E. Cheyenne Mtn. Blvd.  
Colorado Springs, CO 80906  
TEL (719) 576-3300  
FAX (719) 540-1759

### *Atmel Rousset*

Zone Industrielle  
13106 Rousset Cedex  
France  
TEL (33) 4-4253-6000  
FAX (33) 4-4253-6001

---

### *Fax-on-Demand*

North America:  
1-(800) 292-8635  
International:  
1-(408) 441-0732

### *e-mail*

[literature@atmel.com](mailto:literature@atmel.com)

### *Web Site*

<http://www.atmel.com>

### *BBS*

1-(408) 436-4309

### © Atmel Corporation 2000.

Atmel Corporation makes no warranty for the use of its products, other than those expressly contained in the Company's standard warranty which is detailed in Atmel's Terms and Conditions located on the Company's web site. The Company assumes no responsibility for any errors which may appear in this document, reserves the right to change devices or specifications detailed herein at any time without notice, and does not make any commitment to update the information contained herein. No licenses to patents or other intellectual property of Atmel are granted by the Company in connection with the sale of Atmel products, expressly or by implication. Atmel's products are not authorized for use as critical components in life support devices or systems.

Marks bearing ® and/or ™ are registered trademarks and trademarks of Atmel Corporation.

Terms and product names in this document may be trademarks of others.



Printed on recycled paper.

1641A-04/00/xM

## Looking for pricing, stock, or lifecycle information?

Click below to explore more details on WIN SOURCE:

- ⊖ [View AT43DK312A](#) on WIN SOURCE
- ⊖ [Microchip Technology](#) Information

## Optimize Your Supply Chain with WIN SOURCE Solutions

- ✓ Global Sourcing Solution
- ✓ Obsolete Management
- ✓ Cost Control Management
- ✓ Shortage Management
- ✓ Alternative Solution
- ✓ Excess Inventory Management