

Items used in this QuickStart Guide.

(Complete kit contents provided on the included Packing List.)



Baseboard



Power Supply & Cord



Linux Demo
SD Card



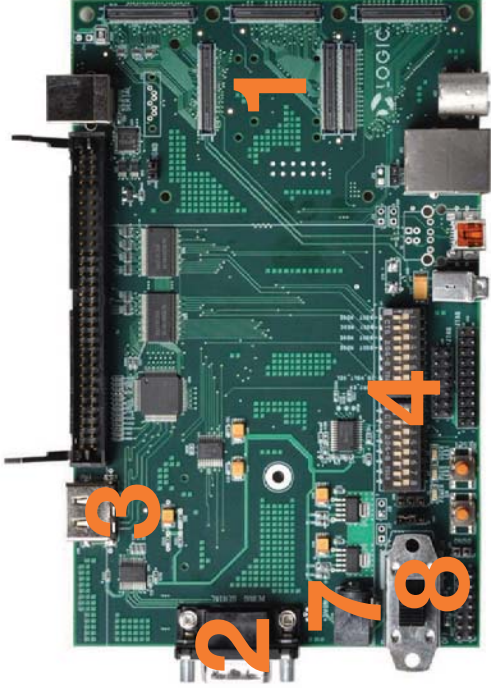
Serial Cable



AM3517
SOM

Important baseboard locations.

(Numbers correspond to the steps on the right.)



Demo setup.

(Setup development kit to sample OS demos.)



1 Connect SOM (align all 3 connectors), press straight down over connectors



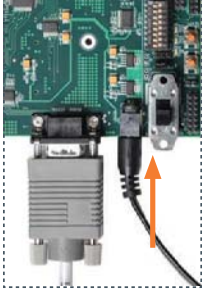
2 Connect serial cable to baseboard at



4 Verify DIP switches S7:1 and S7:4 are set to **ON**; this enables booting from SD cards



5 Launch Tera Term and set the terminal to 115200:8:n



7 Connect power to baseboard and electric outlet



8 Switch power

**If TeraTerm is not already installed, it can be downloaded from Logic PD's website: <http://support.logicpd.com/downloads/240/>

**If a key is not pressed within 10 seconds, U-Boot automatically launches Linux Kernel and demo application. The demo application utilizes a 4.3" WQVGA LCD (not included).

Next steps.
(Prepare for development.)

10

Register Your Kit

To gain access to additional documentation and software, register your kit on the Logic PD website at: support.logicpd.com/auth/register_product.php

11

Documentation Overview

Whether you are developing for hardware or software, the Documentation Overview provides a path for progressing through the available documentation. Locate the Documentation Overview PDF with active links to the documents on the Logic PD website at: support.logicpd.com/downloads/1453/

Troubleshooting

If you are having trouble accessing the demo on the included SD card, try the following:

- +Verify that the AM3517 SOM is securely connected to the baseboard.
- +Verify that DIP switches S7:1 and S7:4 are in the ON position, while all others are in the OFF position.
- +Verify that the correct SD card is inserted into the baseboard.

For support questions, please contact: support.logicpd.com/support/askaquestion.php

For community support, please visit: www.ti.com/e2e

The TI Embedded Processors Wiki can be found at: processors.wiki.ti.com

For more information on the TI AM3517 processor or to download the latest TI software, please visit: www.ti.com/am3517



QuickStar

ZOOM™ AM3517 eXperimenter Kit

Congratulations on your purchase of the Zoom Development Kit provides a product-ready hardware platform with the functionality of the Texas Instruments (TI) AM3517 on Module (SOM).

LOGIC PD 411 N. Washington Ave. Suite 400, Minneapolis, MN 55401
T: 612.672.9495 F: 612.672.9489 I: www.logicpd.com

©2011 Logic PD, Inc. All rights reserved. Zoom is a trademark of Logic PD, Inc. The Texas Instruments logo and name are registered trademarks of Texas Instruments Incorporated. Terms and product names in this document may be trademarks of others.

PN 1020109A



Looking for pricing, stock, or lifecycle information?

Click below to explore more details on WIN SOURCE:

 [View TMDXEXP3517](#) on WIN SOURCE

 [Texas Instruments](#) Information

Optimize Your Supply Chain with WIN SOURCE Solutions

-  Global Sourcing Solution
-  Obsolete Management
-  Cost Control Management
-  Shortage Management
-  Alternative Solution
-  Excess Inventory Management