

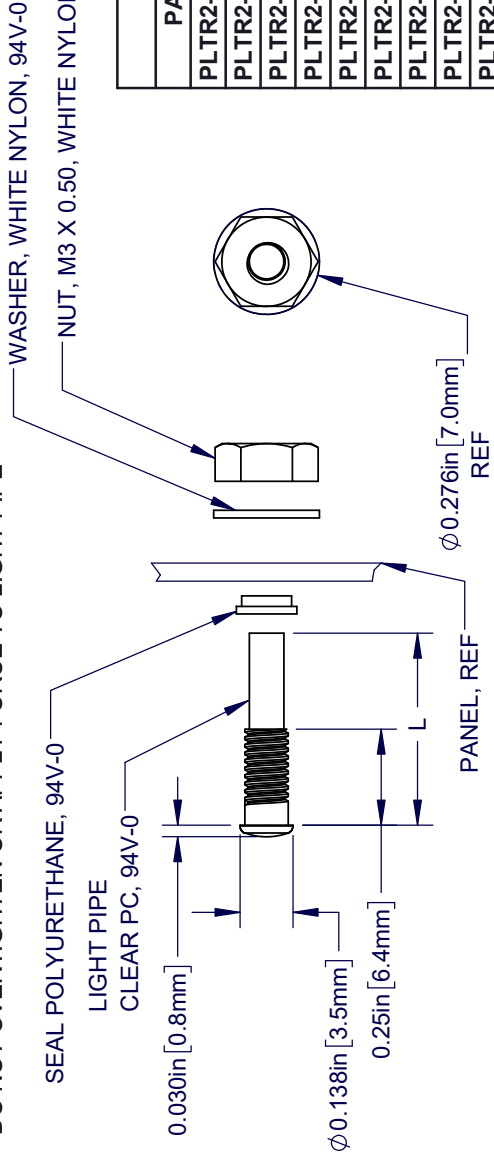


**THE DATASHEET OF
PLTR2-500-PR1**



NOTES:

1. ALL ITEMS SHIPPED NON-ASSEMBLED.
2. SEALED TO IP67 RATING.
3. ASSEMBLY INSTRUCTIONS:
 - CUT RECOMMENDED MOUNTING HOLE INTO PANEL
 - INSERT SEAL ONTO LIGHT PIPE AND PLACE INTO MOUNTING HOLE
 - PLACE WASHER ON OTHER SIDE OF PANEL
 - PLACE FLAT SIDE OF NUT AGAINST WASHER AND TIGHTEN UNTIL THERE IS RESISTANCE
 - HOLD HEAD OF LIGHT PIPE AND TIGHTEN NUT WITH TORQUE WRENCH 6-7 IN-OZ
 - DO NOT OVERTIGHTEN OR APPLY FORCE TO LIGHT PIPE




$\phi 0.130in \begin{matrix} +0.002 \\ -0.001 \end{matrix} [3.30mm \begin{matrix} +0.05 \\ -0.03 \end{matrix}]$

 RECOMMENDED MOUNTING HOLE
 PANEL THICKNESS: 0.047" - 0.093"

TABLE A

PART No.	L = BODY LENG
PLTR2-250-PRX	0.250 (6.4mm)
PLTR2-500-PRX	0.500 (12.7mm)
PLTR2-1000-PRX	1.000 (25.4mm)
PLTR2-1500-PRX	1.500 (38.1mm)
PLTR2-2000-PRX	2.000 (50.8mm)
PLTR2-2500-PRX	2.500 (63.5mm)
PLTR2-3000-PRX	3.000 (76.2mm)
PLTR2-8MM-PRX	8mm (0.315")
PLTR2-16MM-PRX	16mm (0.630")
PLTR2-24MM-PRX	24mm (0.945")
PLTR2-32MM-PRX	32mm (1.260")
PLTR2-40MM-PRX	40mm (1.575")
PLTR2-48MM-PRX	48mm (1.890")
PLTR2-56MM-PRX	56mm (2.205")
PLTR2-64MM-PRX	64mm (2.520")
PLTR2-72MM-PRX	72mm (2.835")

CUSTOMER

PART NUMBER CONFIGURATION



STANDARD TOLERANCE
(UNLESS OTHERWISE SPECIFIED)

DECIMALS	ANGULAR
X ±.1	X° ±1°
.XX ±.01	
.XXX ±.005	

DESIGNED:	DATE:
TD. NGUYEN	04/04/17
REVISED:	DATE:
K. BARON	07/20/20
CHECKED:	DATE:
A. VALDEZ	07/20/20

Looking for pricing, stock, or lifecycle information?

Click below to explore more details on WIN SOURCE:

 [View PLTR2-500-PR1 on WIN SOURCE](#)

 [Bivar Inc. Information](#)

Optimize Your Supply Chain with WIN SOURCE Solutions

-  Global Sourcing Solution
-  Obsolete Management
-  Cost Control Management
-  Shortage Management
-  Alternative Solution
-  Excess Inventory Management