



THE DATASHEET OF

580-M15-103L001

www.win-source.net



0086-755-83957316

DESCRIPTION: MACHINED MICRO-D // SOLDER CUP // MALE

SPECIFICATIONS:

MATERIALS:

INSULATOR: LCP, UL94 V-0, BLACK
 CONTACTS: 15µ" GOLD PLATED BRASS
 SHELL: NICKEL PLATED ZINC ALLOY 60µ"-100µ"

ELECTRICAL:

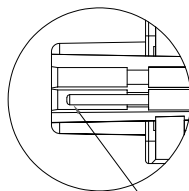
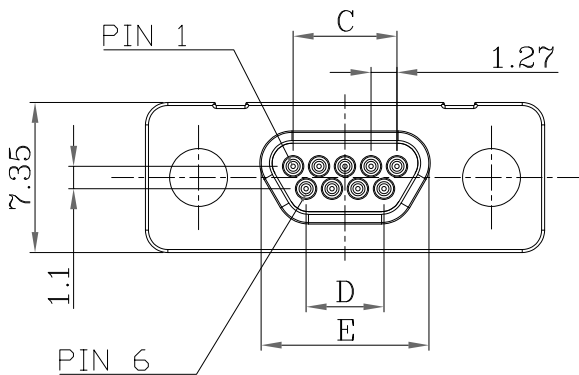
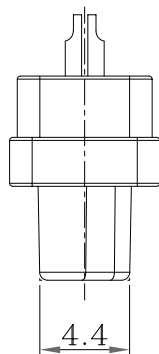
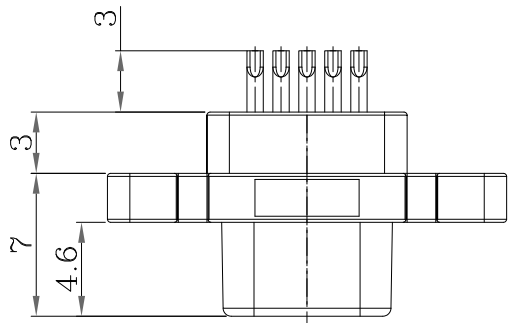
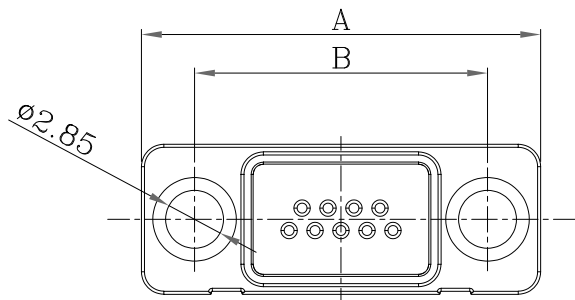
RATED CURRENT: 2A
 RATED VOLTAGE: 60VDC
 D.W.V.: 630 VAC for 1 min.
 INSULATION RESISTANCE: 1000 MOhms MIN.
 CONTACT RESISTANCE: 30 mOhms MAX.

ENVIRONMENT:

OPERATING TEMPERATURE: -40°C TO +125°C
 PROCESS TEMPERATURE: 260°C

WIRE AWG: 26 AWG MAX

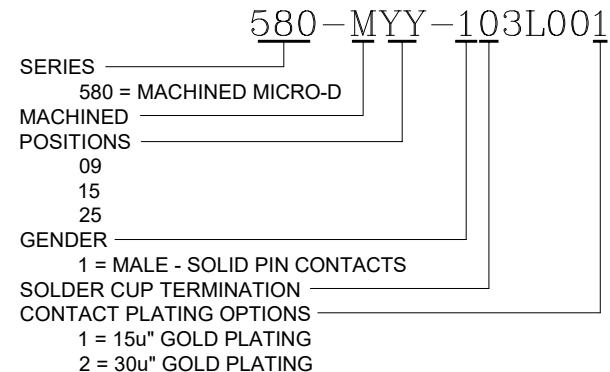
*NOT DESIGNED TO MATE WITH NORCOMP 380 // 381 // 960 SERIES & NORCOMP MICRO-D CABLE ASSEMBLIES USING THE 960 SERIES CONNECTORS.
 **DESIGNED TO MATE WITHIN NORCOMP 58Y-M SERIES MICRO-D CONNECTORS



NESTED
PLUG
CONTACT

DIMENSIONS(mm)

SIZE	A	B	C	D	E
9	19.55	14.35	5.08	3.81	8.20
15	23.36	18.20	8.89	7.62	12.00
25	29.70	24.55	15.24	13.97	18.35



RoHS COMPLIANT



THESE DRAWINGS AND SPECIFICATIONS ARE THE PROPERTY OF NorComp AND SHALL NOT BE REPRODUCED, COPIED OR USED AS THE BASIS FOR THE MANUFACTURE OR SALE OF APPARATUS WITHOUT WRITTEN PERMISSION.

DRAWN:
J. KADEL

DATE:
05/12/2020

TOLERANCES
 .x ±0.20
 .xx ±0.10
 .xxx ±0.05
 .xxxx ±0.03
 ANGULAR ±1°

UNITS = mm

DO NOT SCALE FROM DRAWING

NorComp

SCALE: NTS SHEET 1 OF 1 REV 6

DWG NO. 580-MYY-103L001

Looking for pricing, stock, or lifecycle information?

Click below to explore more details on WIN SOURCE:

 [View 580-M15-103L001 on WIN SOURCE](#)

 [NorComp Inc. Information](#)

Optimize Your Supply Chain with WIN SOURCE Solutions

-  Global Sourcing Solution
-  Obsolete Management
-  Cost Control Management
-  Shortage Management
-  Alternative Solution
-  Excess Inventory Management