



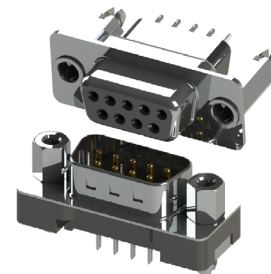
THE DATASHEET OF
628-009-220-041



D-Sub Connectors: Vertical, Metal Body

Features:

- Standard and high profile insulator styles are available
- 0.109" (2.77mm) contact spacing x 0.112" (2.84mm) row spacing
- Plug and receptacle in 9, 15, 25, 37 or 50 contact sizes
- Pin and socket contact mating design with P.C. tail termination
- Metal shell provides EMI/RFI shielding, plug shell indents provide grounding and additional mating retention
- Grounding features include boardlock for exceptional retention to P.C. board
- Mounting options for panel mount or connector mating include through hole, threaded hole and threaded standoffs
- D-shaped connector mating outline provides polarization
- Design based on requirements of MIL-C-24038, EIA RS-232 and RS-449



Specifications:

Insulator Material	Thermoplastic polyester, UL 94V-0, chemical resistant, color: Black
Contact Material	Plug (pin): Brass Receptacle (socket): Brass
Contact Plating	Selective gold (see ordering code) over nickel for the mating area, tin plating for tail area
Ferrite Specs:	20dB minimum @30 MHz, 30dB minimum @50 MHz, and 50dB minimum @100 MHz
Shell Material	Nickel plated steel (optional tin plating)
Current Rating	3 amps - 5 amps
Contact Resistance	25 milliohms maximum
Insulation Resistance	1000 megohms minimum
Dielectric Withstanding Voltage	1000 V AC rms at Sea Level
Operating Temperature	-55°C To +85°C (upto +125°C for high temp)
Insertion Force	16 oz (4.45 N) Maximum Per Contact Position
Withdrawal Force	1 oz (0.28 N) Minimum Per Contact Position

Ordering Code:

627-025-220-043

SERIES: _____
627: PLUG (PIN)
628: RECEPTACLE (SOCKET)

NO. OF CONTACTS: _____
009 - 9 CONTACTS 025 - 25 CONTACTS
015 - 15 CONTACTS 037 - 37 CONTACTS
050 - 50 CONTACTS (STANDARD PROFILE & C&L ONLY)

CONTACT FINISH CODE: _____
2 - GOLD FLASH PLATING
3 - 15µ" OF GOLD PLATING
6 - 30µ" OF GOLD PLATING

CONTACT CODE: _____
20 - PCB TAIL STANDARD PROFILE INSULATOR
21 - PCB TAIL HIGH PROFILE INSULATOR: STANDARD LENGTH
22 - SOLDER CUP (STANDARD PROFILE ONLY)
28 - 0.110" (2.80mm) PC TAIL WITH FERRITE FILTER (STANDARD PROFILE ONLY)
41 - PCB TAIL HIGH PROFILE: ONLY AVAILABLE WITH 11.7mm BOARDLOCKS
51 - PCB TAIL HIGH PROFILE: ONLY AVAILABLE WITH 12.7mm BOARDLOCKS
61 - PCB TAIL HIGH PROFILE: ONLY AVAILABLE WITH 13.7mm BOARDLOCKS
71 - PCB TAIL HIGH PROFILE: ONLY AVAILABLE WITH 14.2mm BOARDLOCKS
81 - PCB TAIL HIGH PROFILE: ONLY AVAILABLE WITH 15.0mm BOARDLOCKS
91 - PCB TAIL HIGH PROFILE: ONLY AVAILABLE WITH 10.8mm BOARDLOCKS

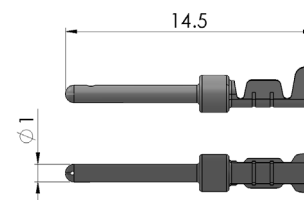
FLANGE MOUNTING OPTIONS:
1 - DIA.120" (DIA.3.05MM) THROUGH HOLE
2 - #4-40 THREADED CLINCH NUT (BOARDSIDE)
3 - #4-40 THREADED STANDOFF
6 - #4-40 THREADED HOLE WITH BOARDLOCKS (N/A FOR CRIMP & LOAD TERMINATION)
7 - #4-40 THREADED STANDOFF WITH BOARDLOCKS (N/A FOR CRIMP & LOAD TERMINATION)
8 - #4-40 THREADED CLINCH NUT (MATING SIDE) .236" (6.00mm)
9 - #4-40 THREADED CLINCH NUT (BOARDSIDE) .236" (6.00mm)

INSULATOR STYLE:
4 - STANDARD PROFILE - STANDARD TEMP (N/A FOR CRIMP & LOAD TERMINATION)
5 - HIGH PROFILE - STANDARD TEMP
6 - STANDARD PROFILE - HIGH TEMP (N/A FOR CRIMP & LOAD TERMINATION)
7 - HIGH PROFILE - HIGH TEMP (N/A FOR CRIMP & LOAD TERMINATION)

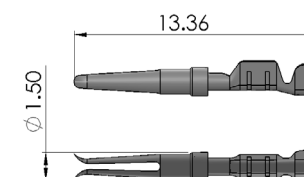
SHELL PLATING:
0 - NICKEL PLATED SHELL
2 - TIN PLATED SHELL

TERMINATION:
010 - CRIMP AND LOAD (CABLE ASSEMBLY)

Contact P/N:	Description:	Wire Gauge (AWG):
627-290-001	On reel	24-28
627-290-001P60	60 pcs/strip	24-28



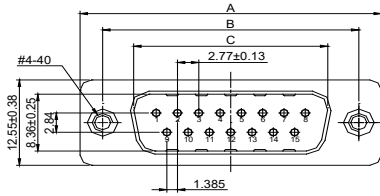
Contact P/N:	Description:	Wire Gauge (AWG):
628-292-001	On reel	24-28
628-292-001P60	60 pcs/strip	24-28



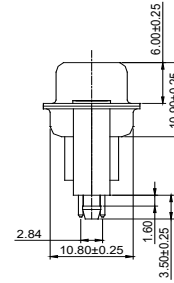
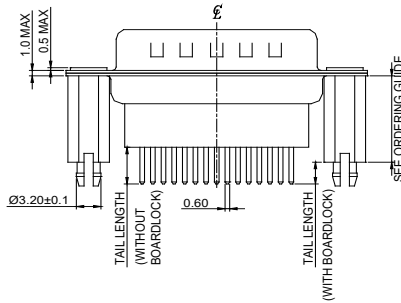
D-Sub Connectors: Vertical, Metal Body

HIGH PROFILE

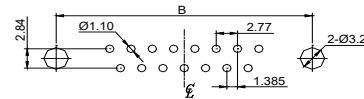
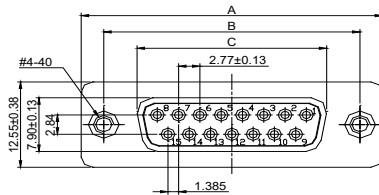
PLUG 627 SERIES HIGH PROFILE



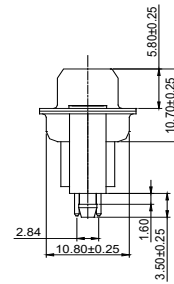
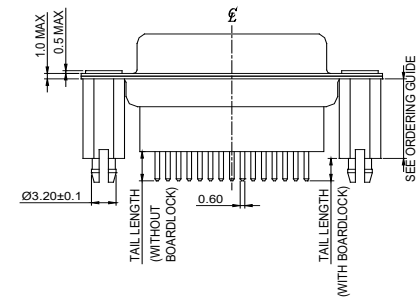
NUMBER OF CONTACTS	A±0.38		B±0.25		C±0.13 PLUG		C±0.13 RECEPTACLE	
	Inch	(mm)	Inch	(mm)	Inch	(mm)	Inch	(mm)
9	1.213	(30.81)	.984	(24.99)	.666	(16.92)	.643	(16.33)
15	1.543	(39.19)	1.312	(33.32)	.994	(25.25)	.971	(24.66)
25	2.088	(53.04)	1.852	(47.04)	1.534	(38.96)	1.511	(38.38)
37	2.729	(69.32)	2.500	(63.50)	2.182	(55.42)	2.159	(54.84)



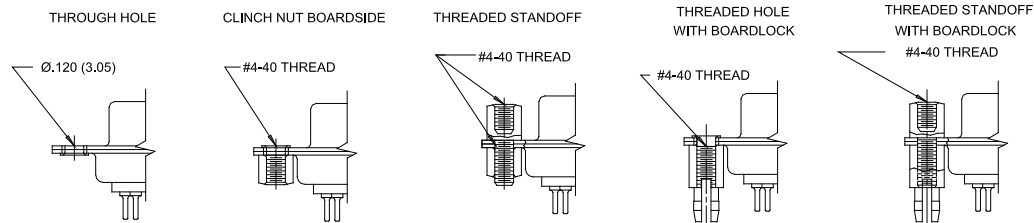
RECEPTACLE 628 SERIES HIGH PROFILE



RECOMMENDED P.C.B LAYOUT FOR PLUG AND RECEPTACLE

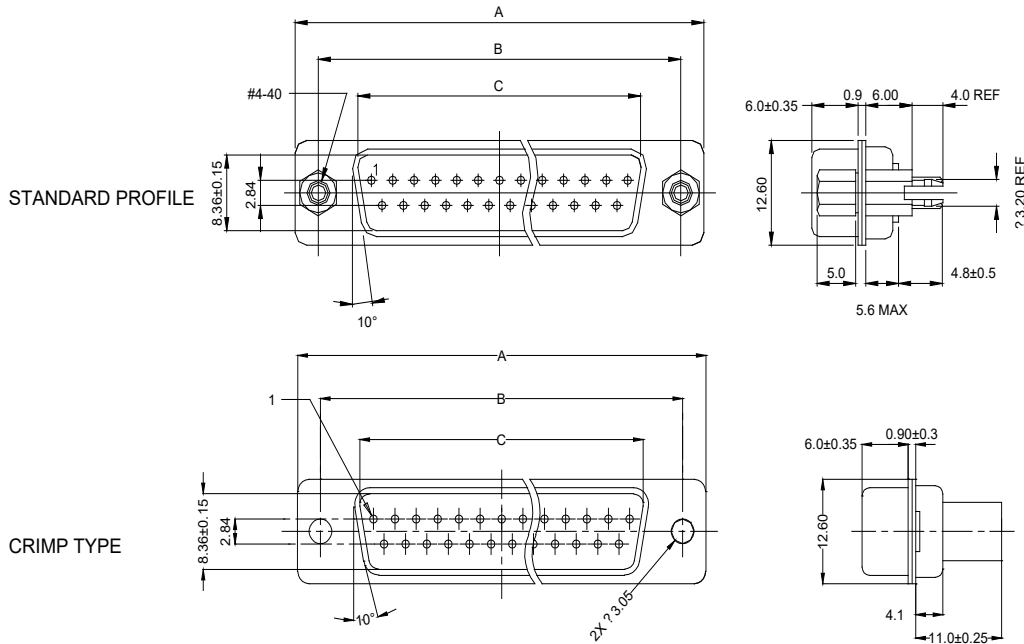


FLANGE MOUNTING OPTIONS

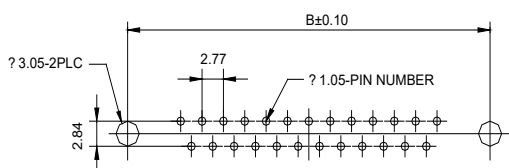
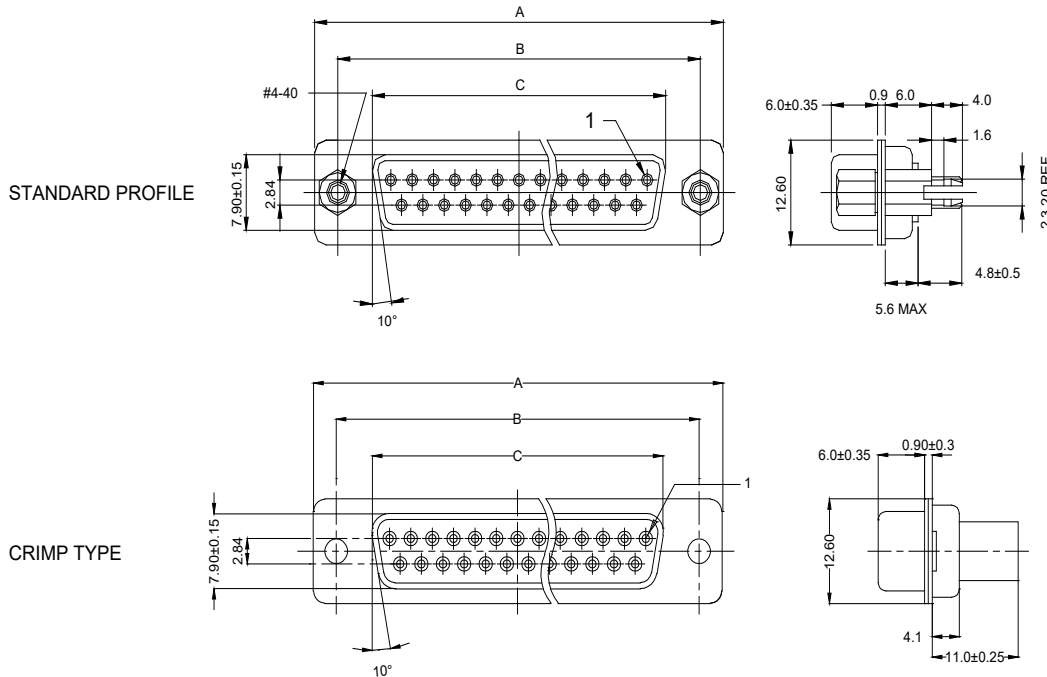


D-Sub Connectors: Vertical, Metal Body

PLUG 627 SERIES



RECEPTACLE 628 SERIES



Recommended PCB Layout
(Plug and Receptacle)

NUMBER OF CONTACTS	A±0.35		B±0.10		C±0.15 PLUG		C±0.15 RECEPTACLE	
	Inch	(mm)	Inch	(mm)	Inch	(mm)	Inch	(mm)
9	1.213	(30.80)	.984	(24.99)	.666	(16.92)	.642	(16.30)
15	1.541	(39.15)	1.312	(33.32)	.994	(25.25)	.970	(24.65)
25	2.087	(53.00)	1.852	(47.04)	1.534	(38.96)	1.512	(38.40)
37	2.728	(69.30)	2.500	(63.50)	2.182	(55.42)	2.157	(54.80)
50	2.638	(67.00)	2.402	(61.00)	2.079	(52.80)	2.055	(52.20)

Looking for pricing, stock, or lifecycle information?

Click below to explore more details on WIN SOURCE:

 [View 628-009-220-041 on WIN SOURCE](#)

 [EDAC Inc. Information](#)

Optimize Your Supply Chain with WIN SOURCE Solutions

-  Global Sourcing Solution
-  Obsolete Management
-  Cost Control Management
-  Shortage Management
-  Alternative Solution
-  Excess Inventory Management