



**THE DATASHEET OF**  
**1318579-1**

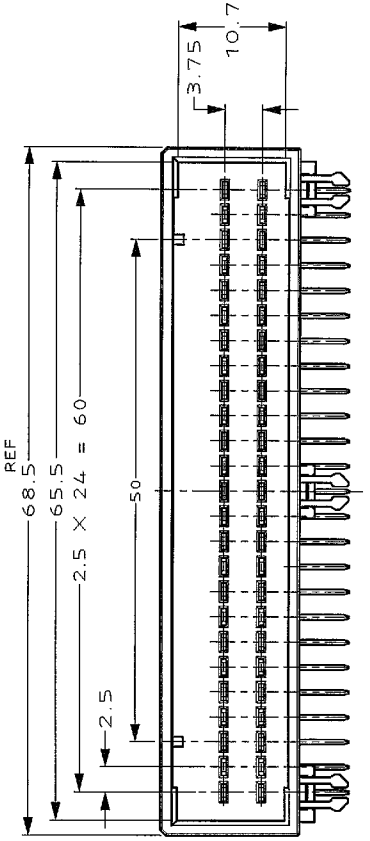
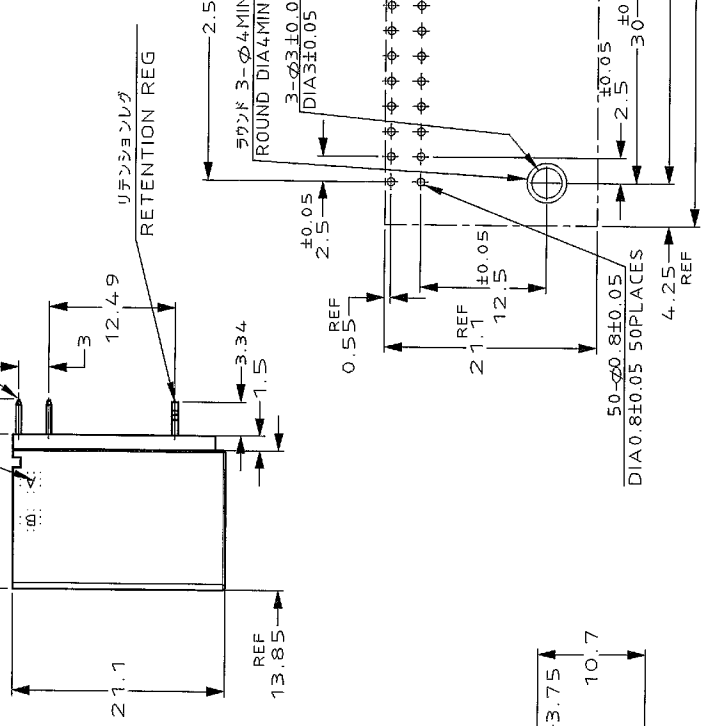
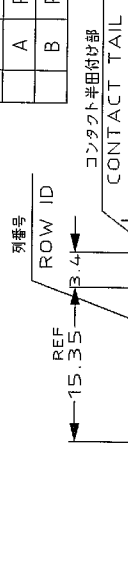
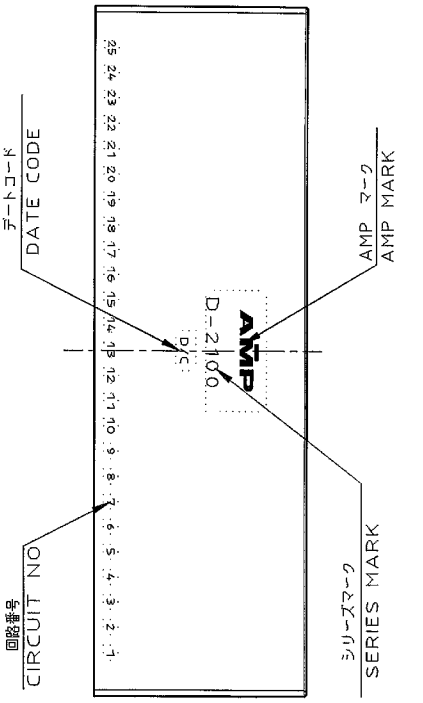


THIS DRAWING IS UNPUBLISHED.  
 (C) COPYRIGHT 1999 BY AMP INCORPORATED. ALL RIGHTS RESERVED.

LOC J  
 DIST -

| DESCRIPTION | P | LTR |
|-------------|---|-----|
| RELEASED    | 0 |     |
| REVISED     | A |     |
| REVISED     | B |     |

-1 : AS SHOWN  
 -1 : 本図



NOTES

- 1. MATERIAL: HOUSING: GLASS FILLED THERMO PLASTIC, POLYESTER(94V-0), COLOR: BLACK  
 TAB CONTACT: COPPER ALLOY  
 RETENTION LEG: BRASS  
 FINISH (CONTACT AREA): 0.38μMIN GOLD PLATING OVER NI PLATING  
 FINISH (RETENTION LEG): TIN PLATED (CONTACT TAIL) OVER NICKEL

注記

- 1. 材料: ハウジング: ガラス入り熱可塑性 ポリエスタル樹脂 (94V-0), 色: 黒  
 タブ コンタクト: 銅合金  
 リテンションレグ: 黄銅  
 めっき: コンタクト: 全面Ni下地 鍍膜厚: 0.38μm MIN 金めっき  
 めっき: リテンションレグとコンタクト基部付部 : ニッケル下地の仕上げめっき

推奨基板取付け寸法 <公称>  
 PC 基板厚: 1.5 (コネクタ径参照)  
 RECOMMENDED PC BOARD HOLE PC BOARD THICKNESS (CONNECTOR MOUNTING REFERENCE)

|                                                                                                                                                                                                    |                  |
|----------------------------------------------------------------------------------------------------------------------------------------------------------------------------------------------------|------------------|
| THE DRAWING IS A CONTROLLED DOCUMENT FOR AMP INCORPORATED. ANY REVISIONS OR MODIFICATIONS TO THIS DRAWING WITHOUT THE AUTHORIZATION OF AMP INCORPORATED SHOULD BE CONTACTED FOR THE USER'S REVIEW. |                  |
| CHK: M. HIGO                                                                                                                                                                                       | 17 JUL '99       |
| APPROV: S. MANABE                                                                                                                                                                                  | 21 JUL '99       |
| NAME: S. MANABE                                                                                                                                                                                    | 21 JUL '99       |
| PRODUCT SPEC: 108-5659                                                                                                                                                                             |                  |
| APPLICATION SPEC: 114-5258                                                                                                                                                                         |                  |
| WEIGHT: -                                                                                                                                                                                          |                  |
| TOLERANCES UNLESS OTHERWISE SPECIFIED:                                                                                                                                                             |                  |
| ±0.2                                                                                                                                                                                               | 1%               |
| ±0.25                                                                                                                                                                                              | 3%               |
| ±0.3                                                                                                                                                                                               | 5%               |
| ANGLE: ±3°                                                                                                                                                                                         | 10%              |
| FINISH: 注記参照                                                                                                                                                                                       |                  |
| MATERIAL: 注記参照                                                                                                                                                                                     |                  |
| SEE NOTES                                                                                                                                                                                          | SEE NOTES        |
| CUSTOMER DRAWING                                                                                                                                                                                   | CUSTOMER DRAWING |

## Looking for pricing, stock, or lifecycle information?

Click below to explore more details on WIN SOURCE:

 [View 1318579-1](#) on WIN SOURCE

 [TE Connectivity](#) Information

## Optimize Your Supply Chain with WIN SOURCE Solutions

-  Global Sourcing Solution
-  Obsolete Management
-  Cost Control Management
-  Shortage Management
-  Alternative Solution
-  Excess Inventory Management