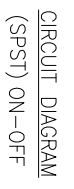
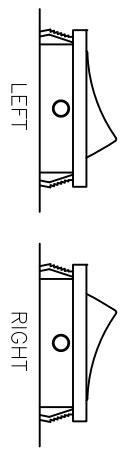
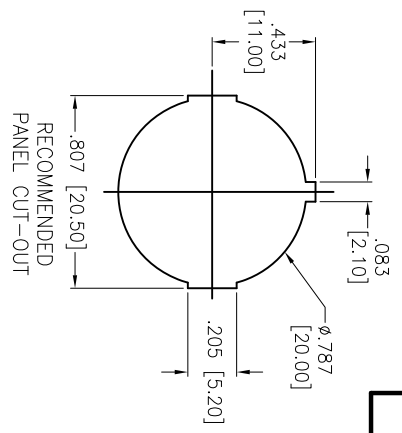




**THE DATASHEET OF
SW-R2-1A-F-1-5W**

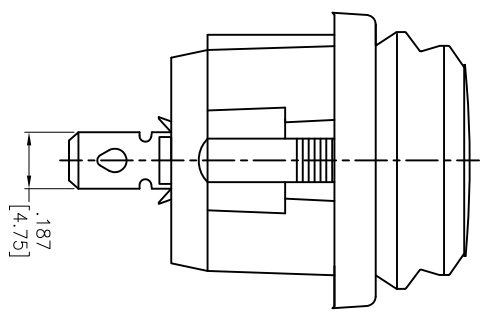


Rev	AWO #	Description	Date	Appr
-		RELEASED	10/21/20	
A		UPDATE SPEC.	8/31/21	WX/RC
B		UPDATE DIM	5/27/22	WX/MC



SW-R2-1A-F-XX-SW

Actuator Color	Actuator Markings
BLANK	1 - O
W	2 5 6
R	3 IO
G	4 ●
Y	5 ○
B	



Replace "X" in P/N with the corresponding switch color and marking

ADAM TECH
 909 Rahway Avenue,
 Union, NJ 07083
 Phone: 908-687-5000
 Fax: 908-687-5710

UNLESS OTHERWISE SPECIFIED ALL DIMENSIONS ARE INCHES [MM]. TOLERANCES: EXCEPT AS NOTED

INCHES	HOLES
X ± .10	ØX ± .10
.XX ± .020	Ø.XX ± .015
.XXX ± .015	Ø.XXX ± .010

DRAWN	OW	10/21/20
CHECKED	AC	10/21/20
APPROVED		

THIS DRAWING CONTAINS INFORMATION THAT IS PROPRIETARY AND SHOULD NOT BE USED WITHOUT PRIOR WRITTEN PERMISSION FROM ADAM TECH

TITLE	SWITCH, MINIATURE ROCKER, SPST, ON-OFF, OC .187 [4.75MM], WATERPROOF
SIZE	X
PART NO.	SW-R2-1A-F-XX-SW
REF:	S00200C
SCALE:	NTS
SHEET	1 OF 1
REV.	B

UL 94V-0
 color markings. (See Chart)

VAC/5S min

5°C

5

4

3

2

1

A

Looking for pricing, stock, or lifecycle information?

Click below to explore more details on WIN SOURCE:

- ⊖ [View SW-R2-1A-F-1-5W on WIN SOURCE](#)
- ⊖ [Adam Technologies, Inc. Information](#)

Optimize Your Supply Chain with WIN SOURCE Solutions

- ✓ Global Sourcing Solution
- ✓ Obsolete Management
- ✓ Cost Control Management
- ✓ Shortage Management
- ✓ Alternative Solution
- ✓ Excess Inventory Management