



**THE DATASHEET OF
BLH177K451C164**



Type BLH, DC Link Capacitors for Harsh Environments

85 °C / 85% RH , 1500h @ Vr, AEC-Q200 Qualified



Type BLH DC Link capacitors use the most advanced construction and technology to meet the challenges of harsh environments. Tested for 1,500-hour at 85 °C / 85% relative humidity with rated voltage applied (50% greater than competitive THB test life). The series is qualified to automotive-grade electrical and mechanical testing per standard AEC-Q200.

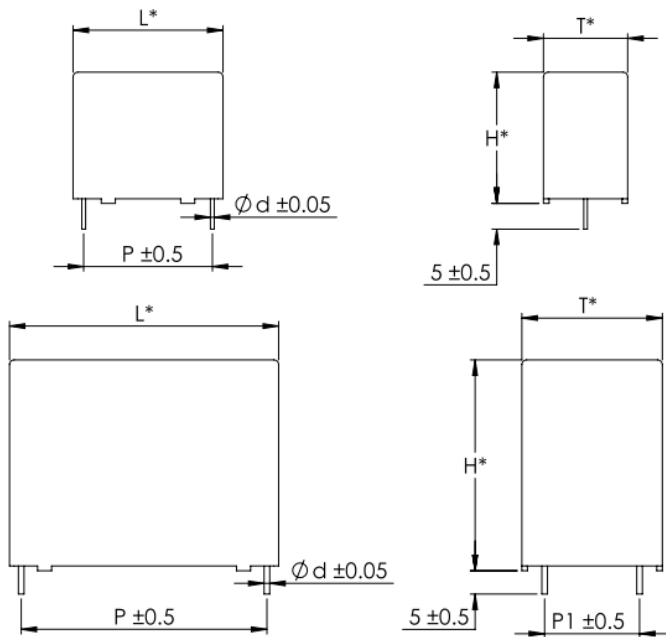
Highlights

- High capacitance
- High ripple current
- Self-healing and low loss
- THB 85 °C / 85% RH 1500 h at rated voltage


Specifications

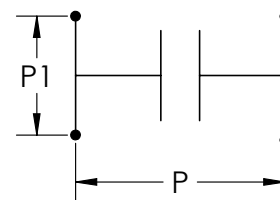
Capacitance Range	1 to 170 µF
Capacitance Tolerance	±10% standard , ±5% may be available upon request
Rated Voltage	450 to 1200 Vdc
Operating Temperature Range	-40 °C to 105 °C (>85 °C derate voltage 1.35% per °C)
Maximum rms Current	see data tables
Test Voltage between Terminals @ 25 °C	150% rated DC voltage for 10 s
Test Voltage between Terminals and Case @ 25°C	3 kVac @ 50/60 Hz for 10 s
Insulation Resistance	≥30,000 MΩxµF @ 100 Vdc 25 °C after 1 minute
Life Expectancy	100,000 h @ 70°C hot spot, rated voltage
THB Rating	85 °C / 85% RH - rated voltage - 1500 h
Reference Standards	IEC 61071, AEC- Q200 qualified (as noted)
Regulatory Information	

Dimensions



Construction Details	
Case Material	Plastic UL94V-0
Resin Material	Dry Resin UL94V-0
Terminal Material	Tin Plated Copper

 UL Recognized E128034 construction only - unprotected



* ±0.8 for L ≤ 42.5mm
±1.0 for L = 57.5mm

Type BLH, DC Link Capacitors for Harsh Environments

85 °C / 85% RH , 1500h @ Vr, AEC-Q200 Qualified

Part Numbering System

BLH Series	107 Capacitance	K Tolerance	701 Voltage	C13 Case	4 Leads
BLH	EIA Cap Code 305 = 3 µF 226 = 22 µF 107 = 100 µF	K = ±10% Standard J = ±5% Optional	451 = 450 Vdc 551 = 550 Vdc 601 = 600 Vdc 701 = 700 Vdc 801 = 800 Vdc 901 = 900 Vdc 102 = 1000 Vdc 112 = 1100 Vdc 122 = 1200 Vdc	Case Code	2 = 2 Leads 4 = 4 Leads

Ratings

Part Number	Cap C (µF)	Typ ESR 10 kHz (mΩ)	Thermal Res (°C/W)	Irms 10 kHz 70 °C (A)	Typ ESL (nH)	dv/dt (V/µs)	Peak Current (A)	Dimensions						AEC Q200
								L (mm)	H (mm)	T (mm)	P (mm)	P1 (mm)	d (mm)	
450 Vdc														
BLH105K451A012	1	45	51.7	2.5	25	60	60	32	18	9	27.5	\	0.8	Yes
BLH205K451A012	2	30	50.5	3	25	60	120	32	18	9	27.5	\	0.8	Yes
BLH305K451A022	3	20	49.3	4	25	60	180	32	20	11	27.5	\	0.8	Yes
BLH405K451A022	4	18	48.4	4	25	60	240	32	20	11	27.5	\	0.8	Yes
BLH505K451A022	5	12	47.1	5	25	60	300	32	20	11	27.5	\	0.8	Yes
BLH505K451A032	5	11	46.5	5.5	25	60	300	32	22	13	27.5	\	0.8	Yes
BLH106K451A052	10	8.5	23.7	7.5	25	60	600	32	28	14	27.5	\	0.8	Yes
BLH106K451A062	10	8	23.7	9	25	60	600	32	28	18	27.5	\	0.8	Yes
BLH126K451A072	12	7	20.5	10	25	60	720	32	33	18	27.5	\	0.8	Yes
BLH156K451A082	15	6	14.5	11.5	25	60	900	32	37	22	27.5	\	0.8	Yes
BLH156K451B012	15	8.5	15.5	9.5	25	30	450	42.5	18	24	37.5	\	1	Yes
BLH186K451A082	18	6	13.8	10	28	60	1080	32	37	22	27.5	\	0.8	Yes
BLH206K451A082	20	5	12.8	11	28	60	1200	32	37	22	27.5	\	0.8	Yes
BLH226K451A082	22	5	12.8	12.5	28	60	1320	32	37	22	27.5	\	0.8	Yes
BLH256K451B054	25	5.5	12.3	12.5	30	35	875	42.5	37	22	37.5	10.2	1.2	Yes
BLH306K451B084	30	6	11.6	12	30	35	1050	42.5	40	20	37.5	10.2	1.2	Yes
BLH406K451B064	40	5.5	9.3	14	30	35	1400	42.5	37	28	37.5	10.2	1.2	Yes
BLH406K451B094	40	5.2	9.0	15	30	35	1400	42.5	44	24	37.5	10.2	1.2	Yes
BLH406K451C014	40	8	9.5	12	30	35	1400	57.5	22	43	52.5	20.3	1.2	Yes
BLH506K451B104	50	4	11.1	15	30	35	1750	42.5	45	30	37.5	20.3	1.2	Yes
BLH506K451C014	50	6.5	9.5	14	30	35	1750	57.5	22	43	52.5	20.3	1.2	Yes
BLH556K451C064	55	5	9.8	15.5	30	35	1925	57.5	45	30	52.5	20.3	1.2	Yes

*AEC Q200 may be available

85 °C / 85% RH , 1500h @ Vr, AEC-Q200 Qualified

Part Number	Cap C (µF)	Typ ESR 10 kHz (mΩ)	Thermal Res (°C/W)	Irms 10 kHz 70 °C (A)	Typ ESL (nH)	dv/dt (V/µs)	Peak Current (A)	Dimensions						AEC Q200
								L (mm)	H (mm)	T (mm)	P (mm)	P1 (mm)	d (mm)	
450 Vdc														
BLH606K451C064	60	4.5	9.2	16.5	30	35	2100	57.5	45	30	52.5	20.3	1.2	Yes
BLH606K451B104	60	4	8.6	16.5	30	35	2100	42.5	45	30	37.5	20.3	1.2	Yes
BLH806K451C064	80	4	7.4	16	35	20	1600	57.5	45	30	52.5	20.3	1.2	Yes
BLH107K451C084	100	3.8	6.2	18	35	20	2000	57.5	50	35	52.5	20.3	1.2	Yes
BLH137K451C124	130	3.5	5.5	22	35	20	2600	57.5	60	35	52.5	20.3	1.2	*
BLH147K451C134	140	3.4	5.4	24	35	20	2800	57.5	65	35	52.5	20.3	1.2	*
BLH157K451C154	150	3.2	5.2	26	35	20	3000	57.5	70	35	52.5	20.3	1.2	*
BLH167K451C164	160	3.1	5.0	28	35	20	3200	57.5	80	35	52.5	20.3	1.2	*
BLH177K451C164	170	3	4.8	30	35	20	3400	57.5	80	35	52.5	20.3	1.2	*
550 Vdc														
BLH305K551A022	3	28	22.3	4	25	60	180	32	20	11	27.5	\	0.8	Yes
BLH505K551A032	5	14	16.8	6	25	60	300	32	22	13	27.5	\	0.8	Yes
BLH805K551A052	8	12.5	12.6	8.5	25	60	480	32	28	14	27.5	\	0.8	Yes
BLH106K551A072	10	8	12.5	10	25	60	600	32	33	18	27.5	\	0.8	Yes
BLH156K551A082	15	6.5	9.1	12	28	60	900	32	37	22	27.5	\	0.8	Yes
BLH156K551A084	15	5.5	8.1	13	28	60	900	32	37	22	27.5	10.2	1.2	Yes
BLH156K551B012	15	6.5	8.3	10.5	28	60	900	42.5	18	24	37.5	\	1	Yes
BLH206K551B084	20	6.5	9.8	12.5	30	35	700	42.5	40	20	37.5	10.2	1.2	Yes
BLH226K551B084	22	6.5	8.4	13.5	30	35	770	42.5	40	20	37.5	10.2	1.2	Yes
BLH256K551B084	25	6.5	7.3	14.5	30	35	875	42.5	40	20	37.5	10.2	1.2	Yes
BLH306K551B094	30	6	6.5	16	30	35	1050	42.5	44	24	37.5	10.2	1.2	Yes
BLH356K551B104	35	6	5.1	18	30	35	1225	42.5	45	30	37.5	20.3	1.2	Yes
BLH406K551B104	40	5.5	5.1	18	30	35	1400	42.5	45	30	37.5	20.3	1.2	Yes
BLH406K551C014	40	5.8	5.2	16	30	35	1400	57.5	22	43	52.5	20.3	1.2	Yes
BLH506K551B114	50	5	5.0	20	30	35	1750	42.5	50	35	37.5	20.3	1.2	Yes
BLH606K551C064	60	4.8	6.2	18	35	20	1200	57.5	45	30	37.5	20.3	1.2	Yes
BLH756K551C084	75	5	5.0	20	35	20	1500	57.5	50	35	52.5	20.3	1.2	Yes
BLH107K551C114	100	4.5	3.9	24	35	20	2000	57.5	55	45	52.5	20.3	1.2	Yes
BLH117K551C114	110	4	3.7	26	35	20	2200	57.5	55	45	52.5	20.3	1.2	Yes
BLH137K551C124	130	3.4	5.4	23	35	20	2600	57.5	60	35	52.5	20.3	1.2	*
BLH147K551C134	140	3.3	5.3	25	35	20	2800	57.5	65	35	52.5	20.3	1.2	*
BLH157K551C154	150	3.1	5.0	27	35	20	3000	57.5	70	35	52.5	20.3	1.2	*
BLH167K551C164	160	3	4.8	29	35	20	3200	57.5	80	35	52.5	20.3	1.2	*
BLH177K551C164	170	2.8	4.7	32	35	20	3400	57.5	80	35	52.5	20.3	1.2	*
600 Vdc														
BLH305K601A022	3	28	22.3	4	25	60	180	32	20	11	27.5	\	0.8	Yes
BLH405K601A022	4	26	14.3	5	25	60	240	32	20	11	27.5	\	0.8	Yes
BLH505K601A052	5	14.5	26.5	6	25	60	300	32	28	14	27.5	\	0.8	Yes
BLH805K601A052	8	12	17.8	7.5	25	60	480	32	28	14	27.5	\	0.8	Yes
BLH106K601A072	10	7.5	19.8	8.5	25	60	600	32	33	18	27.5	\	0.8	Yes

*AEC Q200 may be available

Type BLH, DC Link Capacitors for Harsh Environments

85 °C / 85% RH , 1500h @ Vr, AEC-Q200 Qualified

Part Number	Cap C (µF)	Typ ESR 10 kHz (mΩ)	Thermal Res (°C/W)	Irms 10 kHz 70 °C (A)	Typ ESL (nH)	dv/dt (V/µs)	Peak Current (A)	Dimensions						AEC Q200
								L (mm)	H (mm)	T (mm)	P (mm)	P1 (mm)	d (mm)	
600 Vdc														
BLH126K601A072	12	7.5	15.8	9.5	25	60	720	32	33	18	27.5	\	0.8	Yes
BLH126K601B012	12	9.5	16.8	8	25	35	420	42.5	18	24	37.5	\	1	Yes
BLH156K601A082	15	7.5	12.1	10.5	28	60	900	32	37	22	27.5	\	0.8	Yes
BLH156K601B012	15	6	16.2	12	28	35	525	42.5	18	24	37.5	\	1	Yes
BLH206K601B084	20	6	13.8	11	30	35	700	42.5	40	20	37.5	10.2	1.2	Yes
BLH306K601B064	30	5.5	10.8	13	30	35	1050	42.5	37	28	37.5	10.2	1.2	Yes
BLH356K601B094	35	5	8.5	16.5	30	35	1225	42.5	44	24	37.5	10.2	1.2	Yes
BLH356K601C014	35	5.5	10.7	13.5	30	20	700	57.5	22	43	52.5	20.3	1.2	Yes
BLH406K601B104	40	4	7.7	18	30	35	1400	42.5	45	30	37.5	20.3	1.2	Yes
BLH506K601C084	50	6.5	7.8	14	35	20	1000	57.5	50	35	52.5	20.3	1.2	Yes
BLH606K601C084	60	5	7.8	16	35	20	1200	57.5	50	35	52.5	20.3	1.2	Yes
BLH706K601C084	70	5	6.2	18	35	20	1400	57.5	50	35	52.5	20.3	1.2	Yes
BLH806K601C114	80	4	6.3	20	35	20	1600	57.5	55	45	52.5	20.3	1.2	Yes
BLH906K601C114	90	4	4.3	24	35	20	1800	57.5	55	45	52.5	20.3	1.2	Yes
BLH107K601C094	100	4	3.7	26	35	20	2000	57.5	53	50	52.5	20.3	1.2	Yes
BLH117K601C094	110	3.5	3.6	28	35	20	2200	57.5	53	50	52.5	20.3	1.2	Yes
BLH127K601C124	120	3.4	3.5	30	35	20	2400	57.5	60	35	52.5	20.3	1.2	*
BLH137K601C134	130	3.3	3.4	32	35	20	2600	57.5	65	35	52.5	20.3	1.2	*
BLH147K601C154	140	3.2	3.4	34	35	20	2800	57.5	70	35	52.5	20.3	1.2	*
BLH147K601C144	140	3.2	3.4	34	35	20	2800	57.5	65	45	52.5	20.3	1.2	Yes
BLH157K601C164	150	3	3.3	36	35	20	3000	57.5	80	35	52.5	20.3	1.2	*
700 Vdc														
BLH105K701A012	1	54	50.6	2.5	25	60	60	32	18	9	27.5	\	0.8	Yes
BLH205K701A012	2	35	49.5	3	25	60	120	32	18	9	27.5	\	0.8	Yes
BLH305K701A022	3	28	47.0	4.5	25	60	180	32	20	11	27.5	\	0.8	Yes
BLH335K701A052	3.3	26	31.5	5.5	25	60	198	32	28	14	27.5	\	0.8	Yes
BLH505K701A052	5	14	26.5	6	25	60	300	32	28	14	27.5	\	0.8	Yes
BLH605K701A062	6	14	16.9	6	25	60	360	32	28	18	27.5	\	0.8	Yes
BLH805K701A072	8	10	12.3	9	25	60	480	32	33	18	27.5	\	0.8	Yes
BLH106K701A072	10	7	14.3	10	25	60	600	32	33	18	27.5	\	0.8	Yes
BLH106K701A082	10	6.5	10.7	12	28	60	600	32	37	22	27.5	\	0.8	Yes
BLH106K701B012	10	7.5	10.1	11.5	30	35	350	42.5	18	24	37.5	\	1	Yes
BLH126K701A082	12	6	9.2	12.5	28	60	720	32	37	22	27.5	\	0.8	Yes
BLH126K701B012	12	7	9.8	12	30	35	420	42.5	18	24	37.5	\	1	Yes
BLH156K701B042	15	9	13.7	9	30	35	525	42.5	33.5	22	37.5	\	1	Yes
BLH156K701B044	15	8	12.5	10	30	35	525	42.5	33.5	22	37.5	10.2	1.2	Yes
BLH156K701B084	15	8	12.5	10	30	35	525	42.5	40	20	37.5	10.2	1.2	Yes
BLH206K701B064	20	7.5	11.6	12	30	35	700	42.5	37	28	37.5	10.2	1.2	Yes
BLH226K701B094	22	6.5	9.3	14	30	35	770	42.5	44	24	37.5	10.2	1.2	Yes

*AEC Q200 may be available

Type BLH, DC Link Capacitors for Harsh Environments



85 °C / 85% RH , 1500h @ Vr, AEC-Q200 Qualified

Part Number	Cap C (µF)	Typ ESR 10 kHz (mΩ)	Thermal Res (°C/W)	Irms 10 kHz 70 °C (A)	Typ ESL (nH)	dv/dt (V/µs)	Peak Current (A)	Dimensions						AEC Q200
								L (mm)	H (mm)	T (mm)	P (mm)	P1 (mm)	d (mm)	
700 Vdc														
BLH256K701B094	25	6	7.8	16	30	35	875	42.5	44	24	37.5	10.2	1.2	Yes
BLH306K701B104	30	5.8	8.7	16	30	35	1050	42.5	45	30	37.5	20.3	1.2	Yes
BLH306K701C014	30	8.5	9.8	12	30	20	600	57.5	22	43	52.5	20.3	1.2	Yes
BLH356K701B114	35	5.5	6.3	20	30	35	1225	42.5	50	35	37.5	20.3	1.2	Yes
BLH406K701C064	40	5	8.5	14	35	20	800	57.5	45	30	52.5	20.3	1.2	Yes
BLH456K701C064	45	5	7.6	15.5	35	20	900	57.5	45	30	52.5	20.3	1.2	Yes
BLH506K701C084	50	4.8	8.1	15	35	20	1000	57.5	50	35	52.5	20.3	1.2	Yes
BLH556K701C084	55	4.5	8.7	16	35	20	1100	57.5	50	35	52.5	20.3	1.2	Yes
BLH606K701C084	60	4	7.7	18	35	20	1200	57.5	50	35	52.5	20.3	1.2	Yes
BLH656K701C084	65	5	7.7	18	35	20	1300	57.5	50	35	52.5	20.3	1.2	Yes
BLH656K701C114	65	4	6.3	20	35	20	1300	57.5	55	45	52.5	20.3	1.2	Yes
BLH706K701C114	70	3.8	6.3	20	35	20	1400	57.5	55	45	52.5	20.3	1.2	Yes
BLH756K701C114	75	3.8	6.3	20	35	20	1500	57.5	55	45	52.5	20.3	1.2	Yes
BLH806K701C114	80	3.5	5.9	22	35	20	1600	57.5	55	45	52.5	20.3	1.2	Yes
BLH806K701C124	80	3.4	5.8	23	35	20	1600	57.5	60	35	52.5	20.3	1.2	*
BLH906K701C114	90	3.5	5.0	24	35	20	1800	57.5	55	45	52.5	20.3	1.2	Yes
BLH906K701C124	90	3.5	5.0	24	35	20	1800	57.5	60	35	52.5	20.3	1.2	*
BLH107K701C134	100	3.5	5.9	26	35	20	2000	57.5	65	35	52.5	20.3	1.2	*
BLH117K701C154	110	3.4	5.8	28	35	20	2200	57.5	70	35	52.5	20.3	1.2	*
BLH127K701C164	120	3	5.6	30	35	20	2400	57.5	80	35	52.5	20.3	1.2	*
BLH137K701C144	130	2.8	5.4	32	35	20	2600	57.5	65	45	52.5	20.3	1.2	Yes
800 Vdc														
BLH105K801A012	1	62	45.7	2	25	60	60	32	18	9	27.5	\	0.8	Yes
BLH205K801A022	2	31	42.5	3.5	25	60	120	32	20	11	27.5	\	0.8	Yes
BLH305K801A032	3	21	35.4	4.5	25	60	180	32	22	13	27.5	\	0.8	Yes
BLH335K801A052	3.3	25	32.1	4	25	60	198	32	28	14	27.5	\	0.8	Yes
BLH505K801A052	5	12	26.5	6	25	60	300	32	28	14	27.5	\	0.8	Yes
BLH605K801A062	6	10.5	18.6	7.5	25	60	360	32	28	18	27.5	\	0.8	Yes
BLH805K801A072	8	9.5	14.3	9.5	25	60	480	32	33	18	27.5	\	0.8	Yes
BLH905K801A072	9	8.5	9.1	10	25	60	540	32	33	18	27.5	\	0.8	Yes
BLH106K801A082	10	9.5	8.0	11.5	28	60	600	32	37	22	27.5	\	0.8	Yes
BLH106K801B032	10	12.5	15.8	8	30	35	350	42.5	32	19	37.5	\	1	Yes
BLH156K801B084	15	8	12.5	10	30	35	525	42.5	40	20	37.5	10.2	1.2	Yes
BLH206K801B064	20	7	11.6	12	30	35	700	42.5	37	28	37.5	10.2	1.2	Yes
BLH206K801B094	20	6.5	11.8	13.5	30	35	700	42.5	44	24	37.5	10.2	1.2	Yes
BLH226K801B094	22	6	9.3	14	30	35	770	42.5	44	24	37.5	10.2	1.2	Yes
BLH256K801B104	25	5.5	7.5	14	30	35	875	42.5	45	30	37.5	20.3	1.2	Yes
BLH306K801B104	30	4.5	8.7	16	30	35	1050	42.5	45	30	37.5	20.3	1.2	Yes
BLH356K801C064	35	6.5	7.6	14.2	35	20	700	57.5	45	30	52.5	20.3	1.2	Yes
BLH406K801C064	40	6	8.5	14	35	20	800	57.5	45	30	52.5	20.3	1.2	Yes

*AEC Q200 may be available

Type BLH, DC Link Capacitors for Harsh Environments



85 °C / 85% RH , 1500h @ Vr, AEC-Q200 Qualified

Part Number	Cap C (µF)	Typ ESR 10 kHz (mΩ)	Thermal Res (°C/W)	Irms 10 kHz 70 °C (A)	Typ ESL (nH)	dv/dt (V/µs)	Peak Current (A)	Dimensions						AEC Q200
								L (mm)	H (mm)	T (mm)	P (mm)	P1 (mm)	d (mm)	
800 Vdc														
BLH456K801C064	45	5.5	7.6	15.5	35	20	900	57.5	45	30	52.5	20.3	1.2	Yes
BLH476K801C084	47	5	6.5	17.5	35	20	940	57.5	50	35	52.5	20.3	1.2	Yes
BLH506K801C084	50	5	7.8	16	35	20	1000	57.5	50	35	52.5	20.3	1.2	Yes
BLH556K801C084	55	4.6	6.9	17	35	20	1100	57.5	50	35	52.5	20.3	1.2	Yes
BLH656K801C124	65	4	7.3	19	35	20	1300	57.5	60	35	52.5	20.3	1.2	*
BLH656K801C114	65	4	6.3	20	35	20	1300	57.5	55	45	52.5	20.3	1.2	Yes
BLH706K801C114	70	3.8	6.3	20	35	20	1400	57.5	55	45	52.5	20.3	1.2	Yes
BLH706K801C124	70	3.8	6.3	20	35	20	1400	57.5	60	35	52.5	20.3	1.2	*
BLH756K801C114	75	3.8	6.0	22	35	20	1500	57.5	55	45	52.5	20.3	1.2	Yes
BLH756K801C134	75	3.8	6.0	22	35	20	1500	57.5	65	35	52.5	20.3	1.2	*
BLH806K801C144	80	3.5	5.9	23	35	20	1600	57.5	65	45	52.5	20.3	1.2	Yes
BLH806K801C154	80	3.5	5.9	23	35	20	1600	57.5	70	35	52.5	20.3	1.2	*
BLH906K801C144	90	3.3	5.0	25	35	20	1800	57.5	65	45	52.5	20.3	1.2	Yes
BLH906K801C164	90	3.3	5.0	25	35	20	1800	57.5	80	35	52.5	20.3	1.2	*
BLH107K801C144	100	3.2	4.8	28	35	20	2000	57.5	65	45	52.5	20.3	1.2	Yes
900 Vdc														
BLH105K901A012	1	63	46.8	2	25	60	60	32	18	9	27.5	\	0.8	Yes
BLH205K901A022	2	25	44.4	3	25	60	120	32	20	11	27.5	\	0.8	Yes
BLH305K901A032	3	18.5	21.6	5	25	60	180	32	22	13	27.5	\	0.8	Yes
BLH335K901A042	3.3	18.5	21.6	5	25	60	198	32	24.5	15	27.5	\	0.8	Yes
BLH505K901A062	5	12.5	16.3	7	25	60	300	32	28	18	27.5	\	0.8	Yes
BLH605K901A072	6	11	14.2	8	25	60	360	32	33	18	27.5	\	0.8	Yes
BLH805K901A082	8	10	9.1	10.5	28	60	480	32	37	22	27.5	\	0.8	Yes
BLH106K901A082	10	10	6.9	12	28	60	600	32	37	22	27.5	\	0.8	Yes
BLH106K901B082	10	12	11.5	8.5	30	35	350	42.5	40	20	37.5	\	1	Yes
BLH106K901B084	10	11.5	9.6	9.5	30	35	350	42.5	40	20	37.5	10.2	1.2	Yes
BLH156K901B092	15	8	11.3	10.5	30	35	525	42.5	44	24	37.5	\	1	Yes
BLH156K901B094	15	7.5	9.3	12	30	35	525	42.5	44	24	37.5	10.2	1.2	Yes
BLH186K901B092	18	8	11.3	10.5	30	35	630	42.5	44	24	37.5	\	1	Yes
BLH186K901B094	18	7.5	9.3	12	30	35	630	42.5	44	24	37.5	10.2	1.2	Yes
BLH206K901B102	20	6	8.5	14	30	35	700	42.5	45	30	37.5	\	1	Yes
BLH206K901B104	20	5.5	8.1	15	30	35	700	42.5	45	30	37.5	20.3	1.2	Yes
BLH206K901C014	20	8.6	10.5	12	30	20	400	57.5	22	43	52.5	20.3	1.2	Yes
BLH256K901B104	25	5.5	6.3	17	30	35	875	42.5	45	30	37.5	20.3	1.2	Yes
BLH306K901B114	30	5	5.5	19	30	35	1050	42.5	50	35	37.5	20.3	1.2	Yes
BLH306K901C064	30	5.5	8.1	15	35	20	600	57.5	45	30	52.5	20.3	1.2	Yes
BLH356K901C084	35	5.5	7.6	15.5	35	20	700	57.5	50	35	52.5	20.3	1.2	Yes
BLH406K901C084	40	6.5	6.0	16	35	20	800	57.5	50	35	52.5	20.3	1.2	Yes
BLH506K901C084	50	3.6	8.6	18	35	20	1000	57.5	50	35	52.5	20.3	1.2	Yes

*AEC Q200 may be available

85 °C / 85% RH , 1500h @ Vr, AEC-Q200 Qualified

Part Number	Cap C (µF)	Typ ESR 10 kHz (mΩ)	Thermal Res (°C/W)	Irms 10 kHz 70 °C (A)	Typ ESL (nH)	dv/dt (V/µs)	Peak Current (A)	L (mm)	H (mm)	T (mm)	P (mm)	P1 (mm)	d (mm)	AEC Q200
900 Vdc														
BLH556K901C124	55	3.5	7.9	19	35	20	1100	57.5	60	35	52.5	20.3	1.2	*
BLH556K901C114	55	3.4	7.4	20	35	20	1100	57.5	55	45	52.5	20.3	1.2	Yes
BLH606K901C114	60	3.4	7.4	20	35	20	1200	57.5	55	45	52.5	20.3	1.2	Yes
BLH656K901C154	65	3.3	7.0	22	35	20	1300	57.5	70	35	52.5	20.3	1.2	*
BLH706K901C114	70	3.2	6.8	24	35	20	1400	57.5	55	45	52.5	20.3	1.2	Yes
BLH706K901C164	70	3.2	6.8	24	35	20	1400	57.5	80	35	52.5	20.3	1.2	*
BLH806K901C144	80	3.2	6.7	25	35	20	1600	57.5	65	45	52.5	20.3	1.2	Yes
1000 Vdc														
BLH105K102A022	1	45	35.6	2.5	25	80	80	32	20	11	27.5	\	0.8	Yes
BLH205K102A032	2	30	27.2	3.5	25	80	160	32	22	13	27.5	\	0.8	Yes
BLH305K102A042	3	25	16.0	5	25	80	240	32	24.5	15	27.5	\	0.8	Yes
BLH505K102A072	5	14	11.2	8	25	80	400	32	33	18	27.5	\	0.8	Yes
BLH805K102A082	8	12	8.3	10	28	80	640	32	37	22	27.5	\	0.8	Yes
BLH106K102B082	10	12	11.5	8.5	30	40	400	42.5	40	20	37.5	\	1	Yes
BLH106K102B084	10	11.5	9.6	9.5	30	40	400	42.5	40	20	37.5	10.2	1.2	Yes
BLH126K102B094	12	9	10.1	10.5	30	40	480	42.5	44	24	37.5	10.2	1.2	Yes
BLH156K102B092	15	8	11.3	10.5	30	40	600	42.5	44	24	37.5	\	1	Yes
BLH156K102B094	15	7.5	9.3	12	30	40	600	42.5	44	24	37.5	10.2	1.2	Yes
BLH156K102B104	15	7.5	6.8	14	30	40	600	42.5	45	30	37.5	20.3	1.2	Yes
BLH156K102C014	15	8.5	7.9	12	30	40	600	57.5	22	43	52.5	20.3	1.2	Yes
BLH206K102B104	20	6.5	6.8	15	30	40	800	42.5	45	30	37.5	20.3	1.2	Yes
BLH256K102B114	25	5.5	5.6	18	30	40	1000	42.5	50	35	37.5	20.3	1.2	Yes
BLH306K102C064	30	5.5	8.1	15	35	25	750	57.5	45	30	52.5	20.3	1.2	Yes
BLH356K102C084	35	5.5	7.1	16	35	25	875	57.5	50	35	52.5	20.3	1.2	Yes
BLH406K102C084	40	5	7.8	16	35	25	1000	57.5	50	35	52.5	20.3	1.2	Yes
BLH406K102C114	40	5	7.6	17	35	25	1000	57.5	55	45	52.5	20.3	1.2	Yes
BLH506K102C114	50	4.5	6.2	19	35	25	1250	57.5	55	45	52.5	20.3	1.2	Yes
BLH506K102C134	50	4.5	6.2	19	35	25	1250	57.5	65	35	52.5	20.3	1.2	*
BLH556K102C154	55	4.4	6.1	20	35	25	1375	57.5	70	35	52.5	20.3	1.2	*
BLH606K102C164	60	4	5.2	22	35	25	1500	57.5	80	35	52.5	20.3	1.2	*
BLH606K102C144	60	4	5.2	22	35	25	1500	57.5	65	45	52.5	20.3	1.2	Yes
BLH656K102C144-1	65	1.8	3.2	26.5	30	20	1300	57.5	65	45	52.5	20.3	1.2	Yes
1100 Vdc														
BLH105K112A022	1	45	35.6	2.5	25	80	80	32	20	11	27.5	\	0.8	Yes
BLH155K112A032	1.5	30	27.2	3.5	25	80	120	32	22	13	27.5	\	0.8	Yes
BLH205K112A042	2	25	25.0	4	25	80	160	32	24.5	15	27.5	\	0.8	Yes
BLH225K112A052	2.2	16.5	24.2	5	25	80	176	32	28	14	27.5	\	0.8	Yes
BLH335K112A062	3.3	11.5	20.6	6.5	25	80	264	32	28	18	27.5	\	0.8	Yes
BLH405K112A072	4	10.5	14.9	8	25	80	320	32	33	18	27.5	\	0.8	Yes
BLH505K112A082	5	9.5	14.6	8.5	28	80	400	32	37	22	27.5	\	0.8	Yes
BLH685K112B044	6.8	13.5	5.1	12	30	40	272	42.5	33.5	22	37.5	10.2	1.2	Yes

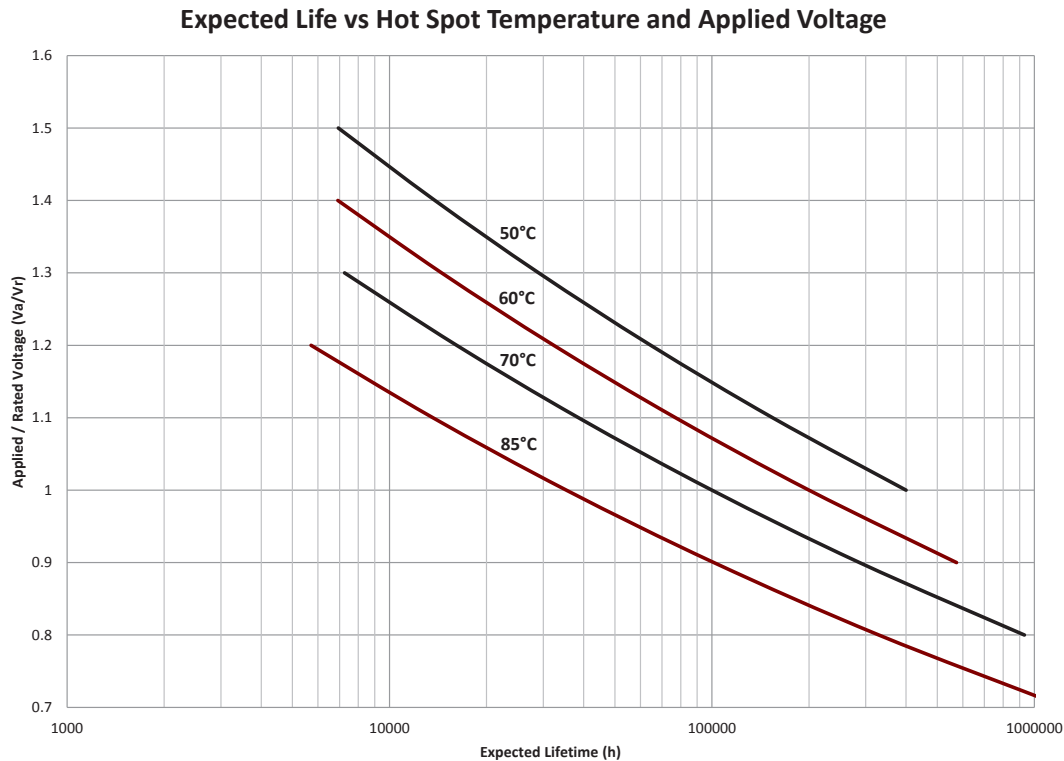
*AEC Q200 may be available

Type BLH, DC Link Capacitors for Harsh Environments

85 °C / 85% RH , 1500h @ Vr, AEC-Q200 Qualified

Part Number	Cap C (µF)	Typ ESR 10 kHz (mΩ)	Thermal Res (°C/W)	I rms 10 kHz 70 °C (A)	Typ ESL (nH)	dv/dt (V/µs)	Peak Current (A)	Dimensions						AEC Q200
								L (mm)	H (mm)	T (mm)	P (mm)	P1 (mm)	d (mm)	
1100 Vdc														
BLH805K112B082	8	14	6.5	10.5	30	40	320	42.5	40	20	37.5	\	1	Yes
BLH805K112B084	8	12.5	5.1	12.5	30	40	320	42.5	40	20	37.5	10.2	1.2	Yes
BLH805K112B054	8	12.5	5.1	12.5	30	40	320	42.5	37	22	37.5	10.2	1.2	Yes
BLH905K112B054	9	12.2	5.0	12.8	30	40	360	42.5	37	22	37.5	10.2	1.2	Yes
BLH106K112B092	10	9	5.7	14	30	40	400	42.5	44	24	37.5	\	1	Yes
BLH106K112B094	10	8.5	5.2	15	30	40	400	42.5	44	24	37.5	10.2	1.2	Yes
BLH126K112B104	12	7.5	5.5	15.5	30	40	480	42.5	45	30	37.5	20.3	1.2	Yes
BLH156K112B104	15	7	5.4	16	30	40	600	42.5	45	30	37.5	20.3	1.2	Yes
BLH186K112B114	18	7.5	5.5	15.5	30	40	720	42.5	50	35	37.5	20.3	1.2	Yes
BLH206K112B114	20	7.2	5.5	16.5	35	40	800	42.5	50	35	37.5	20.3	1.2	Yes
BLH206K112C064	20	8.5	8.2	12	35	25	500	57.5	45	30	52.5	20.3	1.2	Yes
BLH256K112C084	25	8.2	8.0	13	35	25	625	57.5	50	35	52.5	20.3	1.2	Yes
BLH306K112C084	30	5	8.9	15	35	25	750	57.5	50	35	52.5	20.3	1.2	Yes
BLH356K112C124	35	4.9	8.7	16	35	25	875	57.5	60	35	52.5	20.3	1.2	*
BLH406K112C134	40	5.5	6.3	17	35	25	1000	57.5	65	35	52.5	20.3	1.2	*
BLH406K112C114	40	5.5	6.3	17	35	25	1000	57.5	55	45	52.5	20.3	1.2	Yes
BLH456K112C154	45	5.4	6.2	18	35	25	1125	57.5	70	35	52.5	20.3	1.2	*
BLH506K112C144	50	5.2	5.8	19.5	35	25	1250	57.5	65	45	52.5	20.3	1.2	Yes
1200 Vdc														
BLH105K122A022	1	32.5	15.2	4.5	25	90	90	32	20	11	27.5	\	0.8	Yes
BLH205K122A042	2	32.5	12.3	5	25	90	180	32	24.5	15	27.5	\	0.8	Yes
BLH225K122A062	2.2	17	19.4	5.5	25	90	198	32	28	18	27.5	\	0.8	Yes
BLH305K122A062	3	16	12.8	7	25	90	270	32	28	18	27.5	\	0.8	Yes
BLH335K122A072	3.3	13.5	11.6	8	25	90	297	32	33	18	27.5	\	0.8	Yes
BLH405K122A072	4	11	15.1	9.5	25	90	360	32	33	18	27.5	\	0.8	Yes
BLH505K122A082	5	12	8.3	10	28	90	450	32	37	22	27.5	\	0.8	Yes
BLH505K122B042	5	15.5	11.5	7.5	30	45	225	42.5	33.5	22	37.5	\	1	Yes
BLH605K122B082	6	15.5	11.5	7.5	30	45	270	42.5	40	20	37.5	\	1	Yes
BLH705K122B054	7	15.2	11.0	8	30	45	315	42.5	37	22	37.5	10.2	1.2	Yes
BLH805K122B094	8	12.5	9.9	9	30	45	360	42.5	44	24	37.5	10.2	1.2	Yes
BLH106K122B094	10	10.5	9.5	10	30	45	450	42.5	44	24	37.5	10.2	1.2	Yes
BLH106K122B104	10	8	8.7	12	30	45	450	42.5	45	30	37.5	20.3	1.2	Yes
BLH156K122B114	15	6.5	6.8	15	30	45	675	42.5	50	35	37.5	20.3	1.2	Yes
BLH206K122C064	20	8.5	9.7	13	35	30	600	57.5	45	30	52.5	20.3	1.2	Yes
BLH256K122C084	25	6.5	9.1	15	35	30	750	57.5	50	35	52.5	20.3	1.2	Yes
BLH306K122C114	30	5.5	8.1	17	35	30	900	57.5	55	45	52.5	20.3	1.2	Yes
BLH306K122C124	30	5.5	8.1	17	35	30	900	57.5	60	35	52.5	20.3	1.2	*
BLH356K122C114	35	5	6.9	18	35	30	1050	57.5	55	45	52.5	20.3	1.2	Yes
BLH356K122C154	35	5	6.9	18	35	30	1050	57.5	70	35	52.5	20.3	1.2	*
BLH406K122C144	40	4.5	5.6	20	35	30	1200	57.5	65	45	52.5	20.3	1.2	Yes
BLH456K122C144	45	4.3	5.5	22	35	30	1350	57.5	65	45	52.5	20.3	1.2	Yes



*AEC Q200 may be available



Notice and Disclaimer: All product drawings, descriptions, specifications, statements, information and data (collectively, the "Information") in this datasheet or other publication are subject to change. The customer is responsible for checking, confirming and verifying the extent to which the Information contained in this datasheet or other publication is applicable to an order at the time the order is placed. All Information given herein is believed to be accurate and reliable, but it is presented without any guarantee, warranty, representation or responsibility of any kind, expressed or implied. Statements of suitability for certain applications are based on the knowledge that the Cornell Dubilier company providing such statements ("Cornell Dubilier") has of operating conditions that such Cornell Dubilier company regards as typical for such applications, but are not intended to constitute any guarantee, warranty or representation regarding any such matter – and Cornell Dubilier specifically and expressly disclaims any guarantee, warranty or representation concerning the suitability for a specific customer application, use, storage, transportation, or operating environment. The Information is intended for use only by customers who have the requisite experience and capability to determine the correct products for their application. Any technical advice inferred from this Information or otherwise provided by Cornell Dubilier with reference to the use of any Cornell Dubilier products is given gratis (unless otherwise specified by Cornell Dubilier), and Cornell Dubilier assumes no obligation or liability for the advice given or results obtained. Although Cornell Dubilier strives to apply the most stringent quality and safety standards regarding the design and manufacturing of its products, in light of the current state of the art, isolated component failures may still occur. Accordingly, customer applications which require a high degree of reliability or safety should employ suitable designs or other safeguards (such as installation of protective circuitry or redundancies or other appropriate protective measures) in order to ensure that the failure of an electrical component does not result in a risk of personal injury or property damage. Although all product-related warnings, cautions and notes must be observed, the customer should not assume that all safety measures are indicated in such warnings, cautions and notes, or that other safety measures may not be required.

Looking for pricing, stock, or lifecycle information?

Click below to explore more details on WIN SOURCE:

-  [View BLH177K451C164 on WIN SOURCE](#)
-  [Cornell Dubilier Electronics \(CDE\) Information](#)

Optimize Your Supply Chain with WIN SOURCE Solutions

-  Global Sourcing Solution
-  Obsolete Management
-  Cost Control Management
-  Shortage Management
-  Alternative Solution
-  Excess Inventory Management