



**THE DATASHEET OF  
PA4320.103NLT**



# Shielded Drum Core Inductor

PA4320 Series



- Height:** 10.0 Max
- Footprint:** 12.3mm x 12.3mm Max
- Current Rating:** up to 7.6A
- Inductance Range:** 10uH to 1000uH

## Electrical Specifications @ 25°C – Operating Temperature -40°C to 125°C

PART NUMBER	Inductance 100 KHz, 100 mV (uH±20%)	Rated Current (A)	DCR (mOHMS MAX)	Saturation Current (Typical) A			Heating Current	
				10% Drop	20% Drop	30% Drop	20°C Rise	40°C Rise
PA4320.103NLT	10	7.6	16	9.6	11.5	12.5	5.4	7.6
PA4320.153NLT	15	7.0	22	8.3	9.9	10.7	4.8	7.0
PA4320.223NLT	22	5.6	30	6.8	8.1	8.8	4.0	5.6
PA4320.473NLT	47	4.2	56	4.5	5.4	5.8	3.0	4.2
PA4320.104NLT	100	2.8	125	3.1	3.7	4.0	2.0	2.8
PA4320.154NLT	150	2.3	185	2.6	3.1	3.4	1.6	2.3
PA4320.224NLT	220	1.8	300	2.1	2.5	2.8	1.2	1.8
PA4320.334NLT	330	1.7	340	1.7	2.1	2.2	1.2	1.7
PA4320.474NLT	470	1.1	510	1.4	1.7	1.8	0.8	1.1
PA4320.564NLT	560	1.1	600	1.3	1.5	1.6	0.9	1.1
PA4320.684NLT	680	1.0	630	1.2	1.4	1.6	0.8	1.0
PA4320.105NLT	1000	1.0	960	0.98	1.2	1.3	0.69	1.0
PA4320.155NLT	1500	0.8	1450	0.81	0.96	1.0	0.56	0.8

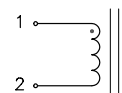
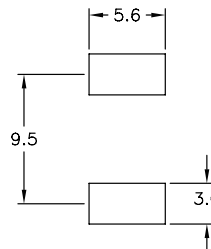
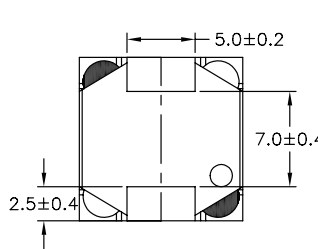
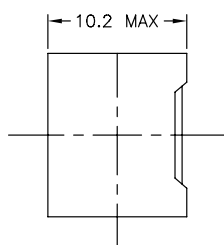
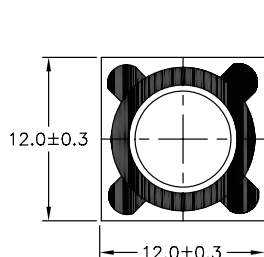
**NOTES:**

- Actual temperature of the component during system operation (ambient plus temperature rise) must be within the standard operating range.
- The Saturation Current is the current at which the initial inductance drops approximately by the amount shown at the stated ambient temperature. This current is determined by placing the component in the specified ambient environment and applying a short duration pulse current (to eliminate self-heating effect) to the component.
- The Rated Current is the DC current required to raise the component temperature by the value shown. Take note that the component's performance varies depending on the system condition. It is suggested that the component be tested at the system level, to verify the temperature rise of the component during system operation.
- The inductance tolerance of the .104NLT / .154NLT / .334NLT / .474NLT / .564NLT / .684NLT / .105NLT and .155NLT are ±10% all other values are ±20%.

## Mechanical

## Schematic

### PA4320.XXXNLT



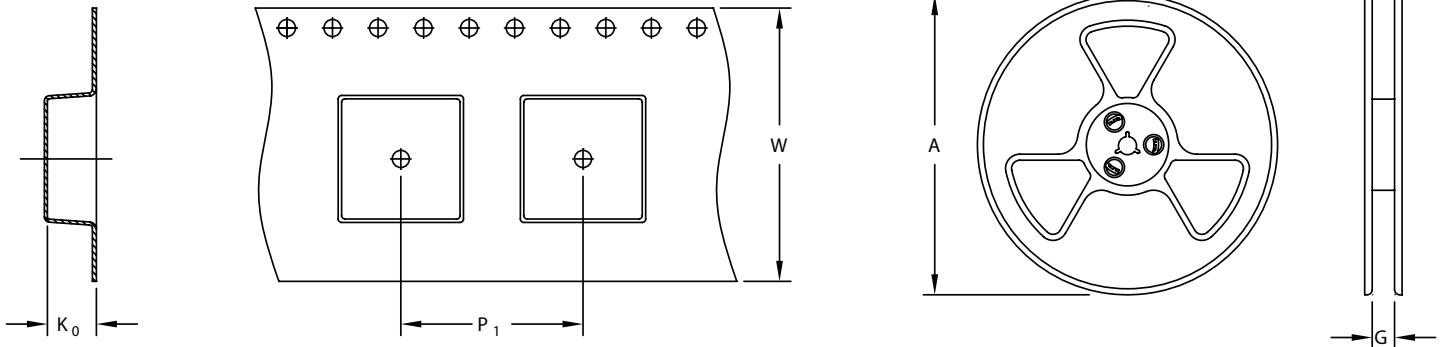
FINAL OUTLINE

SUGGESTED LAYOUT

# Shielded Drum Core Inductor

PA4320 Series

## TAPE & REEL INFO

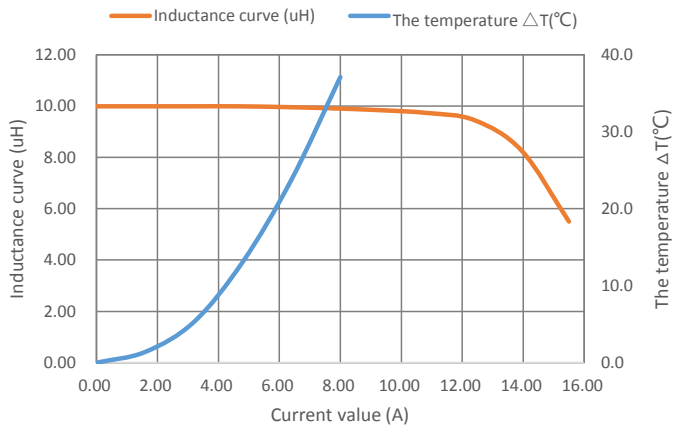


### SURFACE MOUNTING TYPE, REEL/TAPE LIST

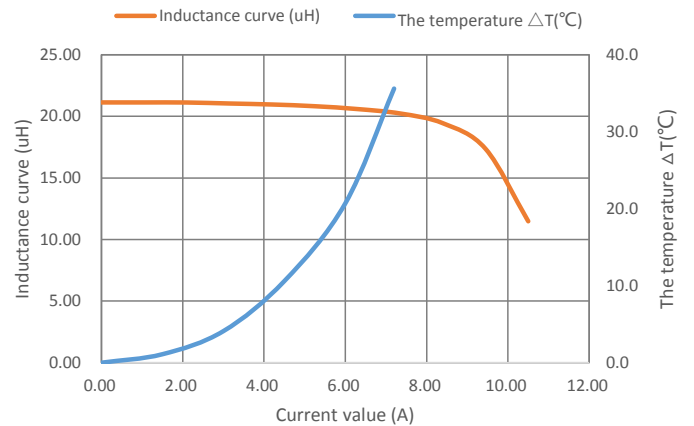
TYPE	REEL SIZE (mm)		TAPE SIZE (mm)			QTY
	A	G	P <sub>1</sub>	W	K <sub>0</sub>	PCS/REEL
PA4320.XXXNLT	Ø330	24.5	16	24	10.9	300

## Typical Performance Curves

PA4320.103NLT



PA4320.223NLT

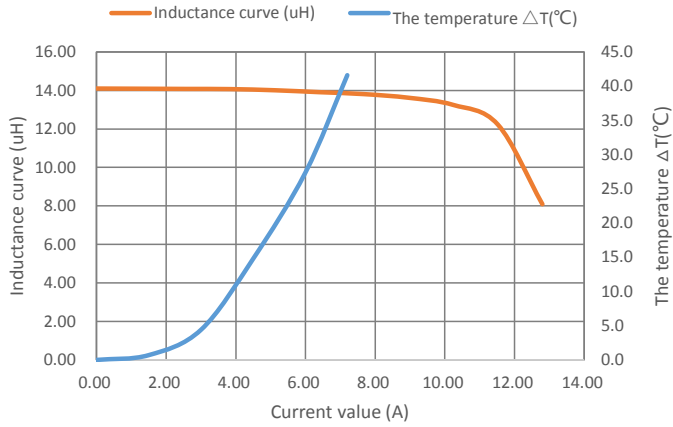


# Shielded Drum Core Inductor

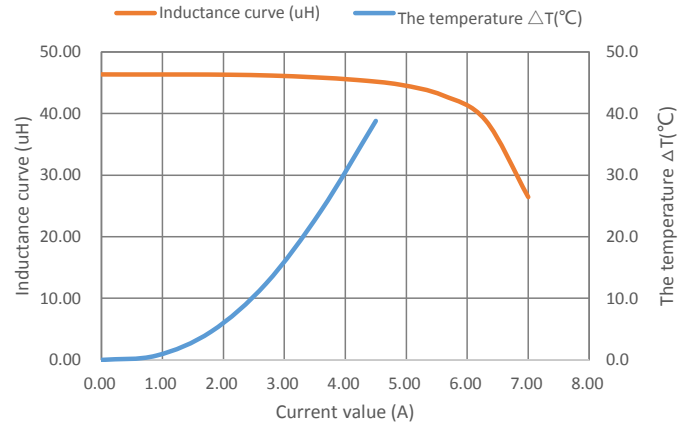
PA4320 Series



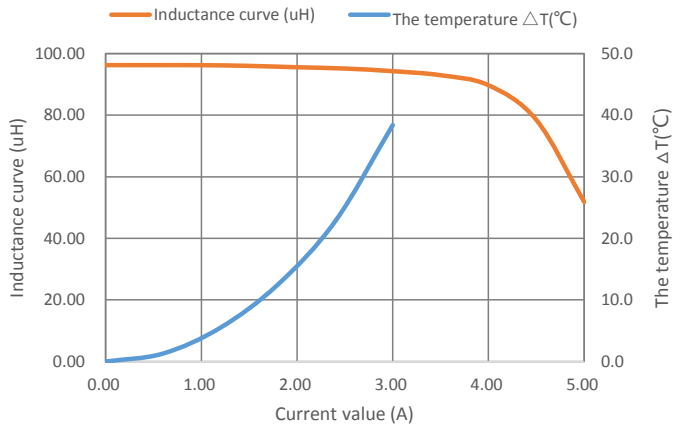
PA4320.153NLT



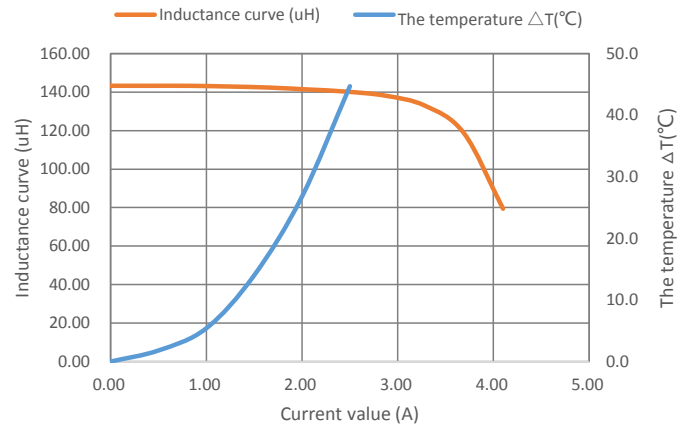
PA4320.473NLT



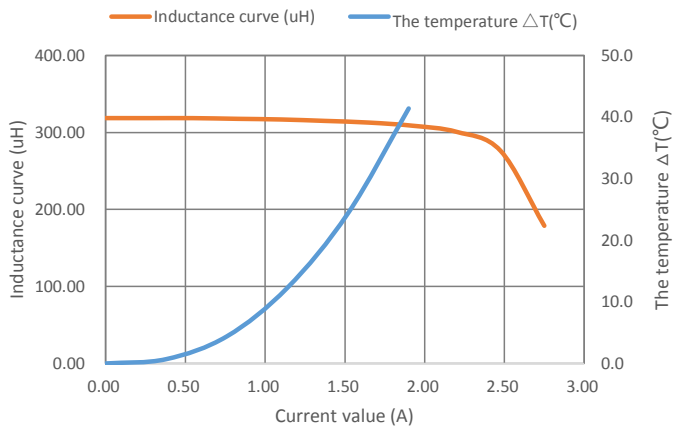
PA4320.104NLT



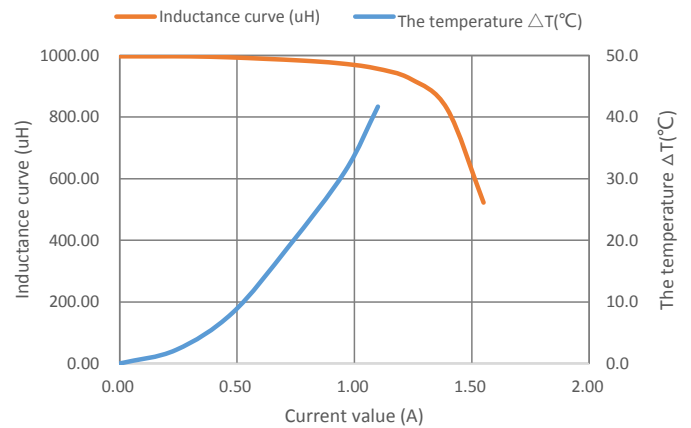
PA4320.154NLT



PA4320.334NLT



PA4320.105NLT

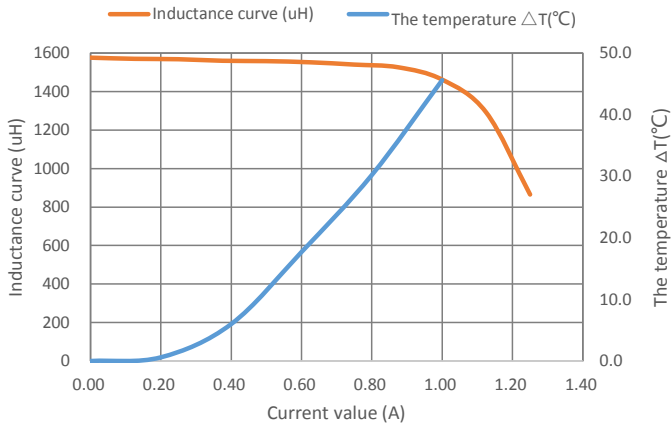


# Shielded Drum Core Inductor

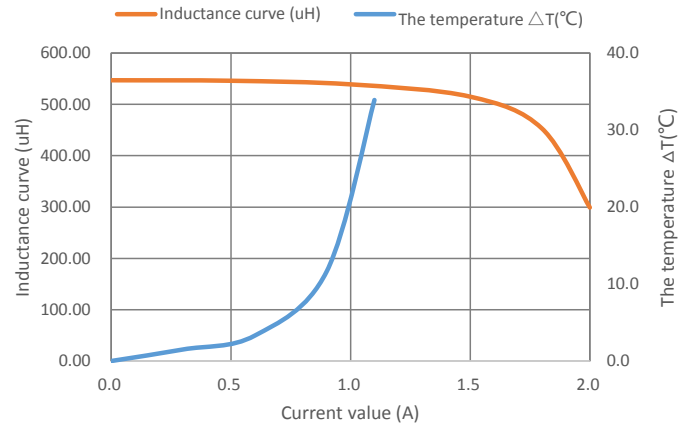
PA4320 Series



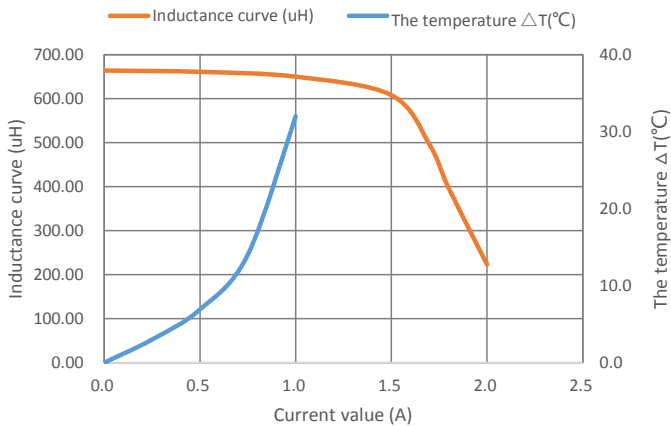
PA4320.155NLT



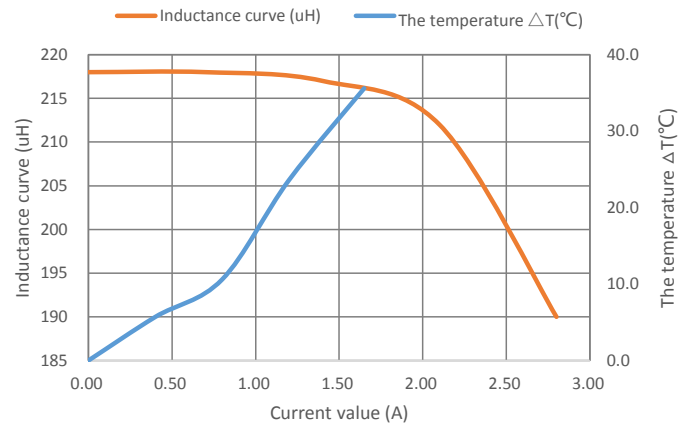
PA4320.564NLT



PA4320.684NLT



PA4320.224NLT



## For More Information

### Pulse Worldwide Headquarters

15255 Innovation Drive Ste 100  
San Diego, CA 92128  
U.S.A.

### Pulse Europe

Pulse Electronics GmbH  
Am Rottland 12  
58540 Meinerzhagen  
Germany

### Pulse China Headquarters

Pulse Electronics (ShenZhen) CO., LTD  
D708, Shenzhen Academy of  
Aerospace Technology,  
The 10th Keji South Road,  
Nanshan District, Shenzhen,  
P.R. China 518057

### Pulse North China

Room 2704/2705  
Super Ocean Finance Ctr.  
2067 Yan An Road West  
Shanghai 200336  
China

### Pulse South Asia

135 Joo Seng Road  
#03-02  
PM Industrial Bldg.  
Singapore 368363

### Pulse North Asia

1F., No.111 Xiyuan Rd  
Zhongli City  
Taoyuan City 32057  
Taiwan (R.O.C)

Tel: 858 674 8100  
Fax: 858 674 8262

Tel: 49 2354 777 100  
Fax: 49 2354 777 168

Tel: 86 755 33966678  
Fax: 86 755 33966700

Tel: 86 21 62787060  
Fax: 86 21 62786973

Tel: 65 6287 8998  
Fax: 65 6280 0080

Tel: 886 3 4356768  
Fax: 886 3 4356820

Performance warranty of products offered on this data sheet is limited to the parameters specified. Data is subject to change without notice. Other brand and product names mentioned herein may be trademarks or registered trademarks of their respective owners. © Copyright, 2019. Pulse Electronics, Inc. All rights reserved.

## Looking for pricing, stock, or lifecycle information?

Click below to explore more details on WIN SOURCE:

 [View PA4320.103NLT on WIN SOURCE](#)

 [Pulse Information](#)

## Optimize Your Supply Chain with WIN SOURCE Solutions

-  Global Sourcing Solution
-  Obsolete Management
-  Cost Control Management
-  Shortage Management
-  Alternative Solution
-  Excess Inventory Management