



# THE DATASHEET OF MK-6000



# SURFBOARDS®



THE BREADBOARDING MEDIUM FOR SURFACE MOUNT SM

LDS6000A 3-9-99

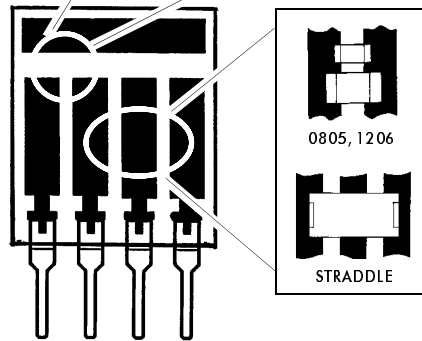
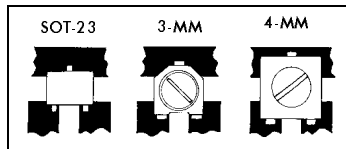
## 6000 SERIES FOR DISCRETE COMPONENTS

MODELS 6004, 6006, 6007, 6008, 6010, 6012

BASIC DESIGN FITS MANY APPLICATIONS

Build simple networks and arrays to functional circuit elements. Horizontal and vertical circuit foils create universal pads that can accept a wide range of two and three terminal surface mount devices.

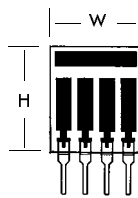
SOT-23 Transistor and Diode packages as well as 3mm and 4mm trimmers can be mounted. 0805, 1206, A size tantalums, Mini-Melf, and other 2 terminal devices can be mounted. Circuit Foil modifications ( see right ) enhance circuit layout options. Single-In-Line ( SIP ) pins on .100 in. centers provide compatibility with standard and solderless breadboards and sockets.



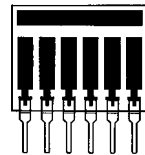
SIP PINS ON .100 in. Centers

STANDARD MODELS

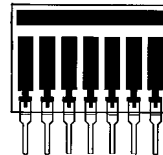
SEE TABLE



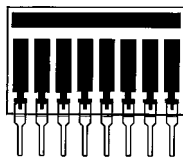
6004



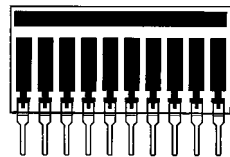
6006



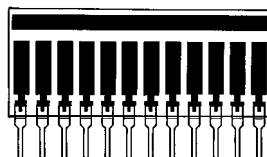
6007



6008



6010



6012

CUSTOM VARIATIONS AVAILABLE ON A SPECIAL ORDER BASIS

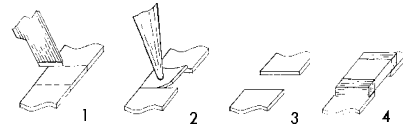
### STANDARD MODEL SPECIFICATIONS

MODEL	W (in.)	H (in.)	NO. PINS
6004	.400	.500	4
6006	.600	.500	6
6007	.700	.500	7
6008	.800	.500	8
6010	1.0	.500	10
6012	1.20	.500	12

### FOIL MODIFICATIONS EXPAND VERSATILITY

Typical of many Surfboards are large pad areas which which may be modified to create additional part mounting zones or expand layout options.

- 1: Score foil with sharp razor to define new zone.
- 2: Apply heat with iron to delaminate foil section.
- 3: New mounting zone has been created.
- 4: Solder component to new mounting zone.



### PIN SPECIFICATIONS / TOLERANCES

	In Inches
A	.062 ± .006
B	.130 ± .010
C	.100 ± .005
D	.020 ± .004
E	.031 ± .005

### BOARD SPECIFICATIONS

BOARD MATERIAL: .031 ± .005 In. Thick FR-4 Glass Epoxy or equivalent.  
 CIRCUITS: 1 Oz. Copper with solder coated pads.  
 TOLERANCES: Given in inches  
 Board Size ± .020 / OAL ± .040  
 Circuit pattern/position ± .005

PATENT PENDING. Copyright 1997, 1999 by Capital Advanced Technologies, Inc. All rights reserved. Surfboards Are a registered trademark of Capital Advanced technologies, Inc. All other trademarks or registered trademarks are property of their respective owners. Availability, specifications, and prices are subject to change without notice. All information given is believed to be accurate but is not guaranteed. The user of information given or products represented by such information is responsible for determining the suitability of said information or products for a given purpose.

**CAPITAL ADVANCED TECHNOLOGIES, INC.**

CAROL STREAM, ILLINOIS. USA

PHONE 630-690-1696 WWW.CapitalAdvanced.Com FAX-ON-DEMAND 630-690-2865

## Looking for pricing, stock, or lifecycle information?

Click below to explore more details on WIN SOURCE:

- [View MK-6000 on WIN SOURCE](#)
- [Capital Advanced Technologies Information](#)

## Optimize Your Supply Chain with WIN SOURCE Solutions

- ✓ Global Sourcing Solution
- ✓ Obsolete Management
- ✓ Cost Control Management
- ✓ Shortage Management
- ✓ Alternative Solution
- ✓ Excess Inventory Management