



THE DATASHEET OF
6083



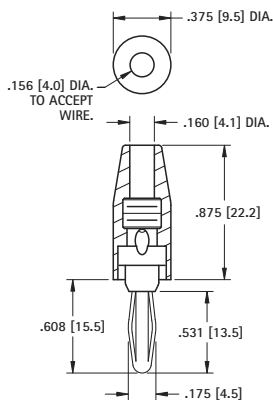
STANDARD SOLDERLESS

Current Ratings: Standard: (.175) 15 Amps; Large: (.300) 40 Amps

SOLDERLESS CONNECTION



.175 (4.5)
Plug



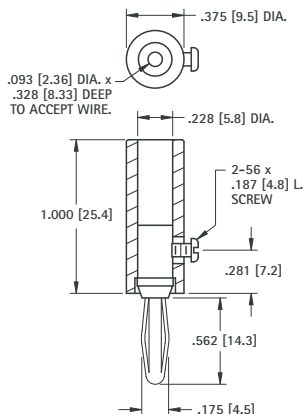
MATERIAL:
Spring: Nickel Silver
Body: Brass, Nickel Plate
Handle: Nylon

CAT. NO.	COLOR
6078	RED
6079	BLACK

SOLDERLESS WITH SET SCREW



.175 (4.5)
Plug



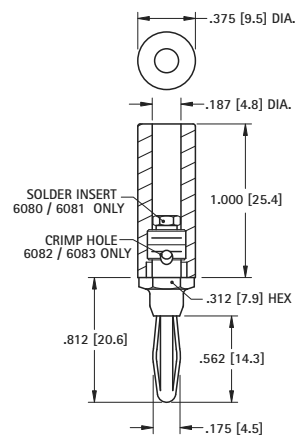
MATERIAL:
Spring: Nickel Silver
Body: Brass, Nickel Plate
Handle: Nylon

CAT. NO.	COLOR
6084	RED
6085	BLACK

SOLDERLESS CONNECTION



.175 (4.5)
Plug



MATERIAL:
Spring: Phosphor Bronze
Body: Brass, Nickel Plate
Handle: Nylon

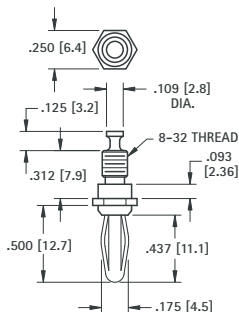
RED CAT. NO.	BLACK CAT. NO.	WIRE CONNECTION
6080	6081	SOLDER
6082	6083	SOLDERLESS

EXTERNAL THREAD

SOLDER LUG



.175 (4.5)
Plug



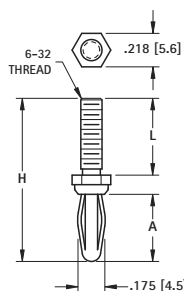
MATERIAL:
Spring: Beryllium Copper
Body: Brass, Nickel Plate

CAT. NO. 652

FOUR LEAF SPRING



.175 (4.5)
Plug



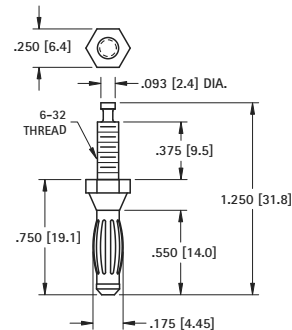
MATERIAL:
Spring: Beryllium Copper (Cat. No. 653)
Spring: Phosphor Bronze (Cat. No. 654, 655)
Body: Brass, Nickel Plate

CAT. NO.	H	L	A
653	1.062 (27.0)	.500 (12.7)	.437 (11.1)
654	.937 (24.7)	.188 (4.8)	.550 (14.0)
655	1.250 (31.8)	.500 (12.7)	.550 (14.0)

BARREL SPRING



.175 (4.5)
Plug



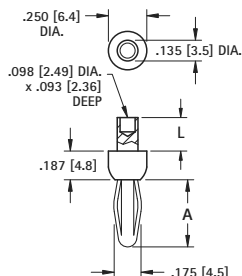
MATERIAL:
Spring: Beryllium Copper
Body: Brass, Nickel Plate

CAT. NO. 657

STANDARD RIVET



.175 (4.5)
Plug



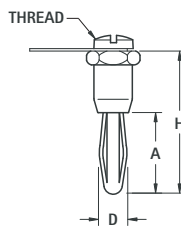
MATERIAL:
Four Leaf Spring: Phosphor Bronze,
*Barrel Spring, Beryllium Copper
Body: Brass, Nickel Plate

CAT. NO.	L	A	SPRING
552-3	.187 (4.7)	.437 (11.1)	4 leaf
658	.187 (4.7)	.550 (14.0)	barrel
552-4	.218 (5.5)	.437 (11.1)	4 leaf

INTERNAL THREAD



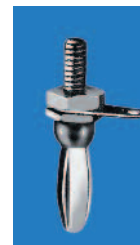
Supplied with screw and lug
Unassembled



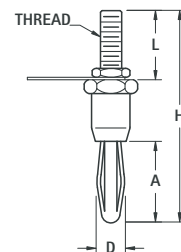
MATERIAL:
Four Leaf Spring: Phosphor Bronze,
*Barrel Spring, Beryllium Copper
Body: Brass, Nickel Plate

CAT. NO.	D	A	H	THREAD	SPRING
6072	.175 (4.4)	.531 (13.5)	.960 (24.4)	6-32	4 leaf
659*	.175 (4.4)	.550 (14.0)	.960 (24.4)	6-32	barrel
6073	.300 (7.6)	.750 (19.1)	1.156 (29.4)	10-32	4 leaf

EXTERNAL THREAD



Supplied with nut and lug
Unassembled



MATERIAL:
Spring: Phosphor Bronze
Body: Brass, Nickel Plate

CAT. NO.	D	A	H	L	THREAD
6074-1	.175 (4.5)	.531 (13.5)	1.125 (28.6)	.375 (9.5)	6-32
6074-2	.175 (4.5)	.531 (13.5)	1.500 (38.1)	.750 (19.1)	6-32
6075	.300 (7.5)	.750 (19.1)	1.750 (44.5)	.625 (15.9)	1/4-28

BANANA PLUGS

Looking for pricing, stock, or lifecycle information?

Click below to explore more details on WIN SOURCE:

- ⊖ [View 6083 on WIN SOURCE](#)
- ⊖ [Keystone Electronics Information](#)

Optimize Your Supply Chain with WIN SOURCE Solutions

- ✓ Global Sourcing Solution
- ✓ Obsolete Management
- ✓ Cost Control Management
- ✓ Shortage Management
- ✓ Alternative Solution
- ✓ Excess Inventory Management